

VuPoint Series 3 1/4" Frame Depth Casement (Project-Out)

VUPOINT SERIES CASEMENT (PROJECT-OUT)

FEATURES

- ◇ **Commercial Framing System**
 - 3 1/4" main frame
- ◇ **Enhanced Design**
 - Mitered and welded corners
- ◇ **Glazing**
 - 1" insulated glass
- ◇ **Integral Nailing Fin**
- ◇ **Hardware**
 - Multi-point locking system with fold-down handle to avoid interference with window blinds
 - Heavy commercial 4-bar arms
 - Low profile flat lock
- ◇ **Screen**
 - Flex Screen
- ◇ **Colors**
 - White or Sandstone vinyl (interior/exterior)

BENEFITS

- ◇ The capacity to match exterior colors for unique project facades
- ◇ The ability to facilitate large sizes for taller and wider window openings

PERFORMANCE

- ◇ Structural & Thermal (test reports or thermal simulations available upon request)

Model	Casement (Project-Out)
NAFS Rating	CW-50
Structural Load P.S.F.	75.19
Air at 50 MPH (cfm/ft ²)	0.01
Water (No Penetration) P.S.F.	7.5
U-Value (ranges based on multiple Low-E/Argon combinations)	0.23-0.27
SHGC (ranges based on multiple Low-E/Argon combinations)	0.11-0.41

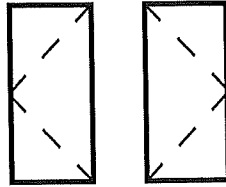
OPTIONS

- ◇ **Available Configurations**
 - Project-out casement
- ◇ **Muntin Choices**
 - Internal or simulated divided lites available
- ◇ **Limited Travel Hardware**
- ◇ **Screen**
 - Extruded aluminum screen frame with BetterVue™ mesh with WaterShed® technology
 - Extruded aluminum screen frame with aluminum wire mesh
 - Extruded aluminum screen frame with sunscreen mesh
 - Extruded aluminum screen frame with stainless steel 0.009" thickness mesh
- ◇ **Glazing**
 - Multiple Low-E and argon glazing choices
 - Triple glazing (Energy TG)
 - Capillary tubes
 - Wide variety of glazing, tinting and thickness options
- ◇ **Panning & Trim Choices**
 - Wide variety of panning, receptor and trim available
- ◇ **Mulling**
 - Wide variety of structural mulls
- ◇ **Colors**
 - High-performance Textured Black laminate (interior/exterior)
 - High-performance Textured Black laminate (exterior only with White vinyl or Textured Black laminate interior)
 - High-performance Textured Dark Bronze laminate (exterior only with White vinyl interior)
 - Twelve painted exterior colors (with White or Sandstone vinyl interior)
 - Unlimited custom painted exterior colors

Window test size: 36" x 78"

Our products are tested to the standards of and certified by some of the foremost organizations in the fenestration industry.

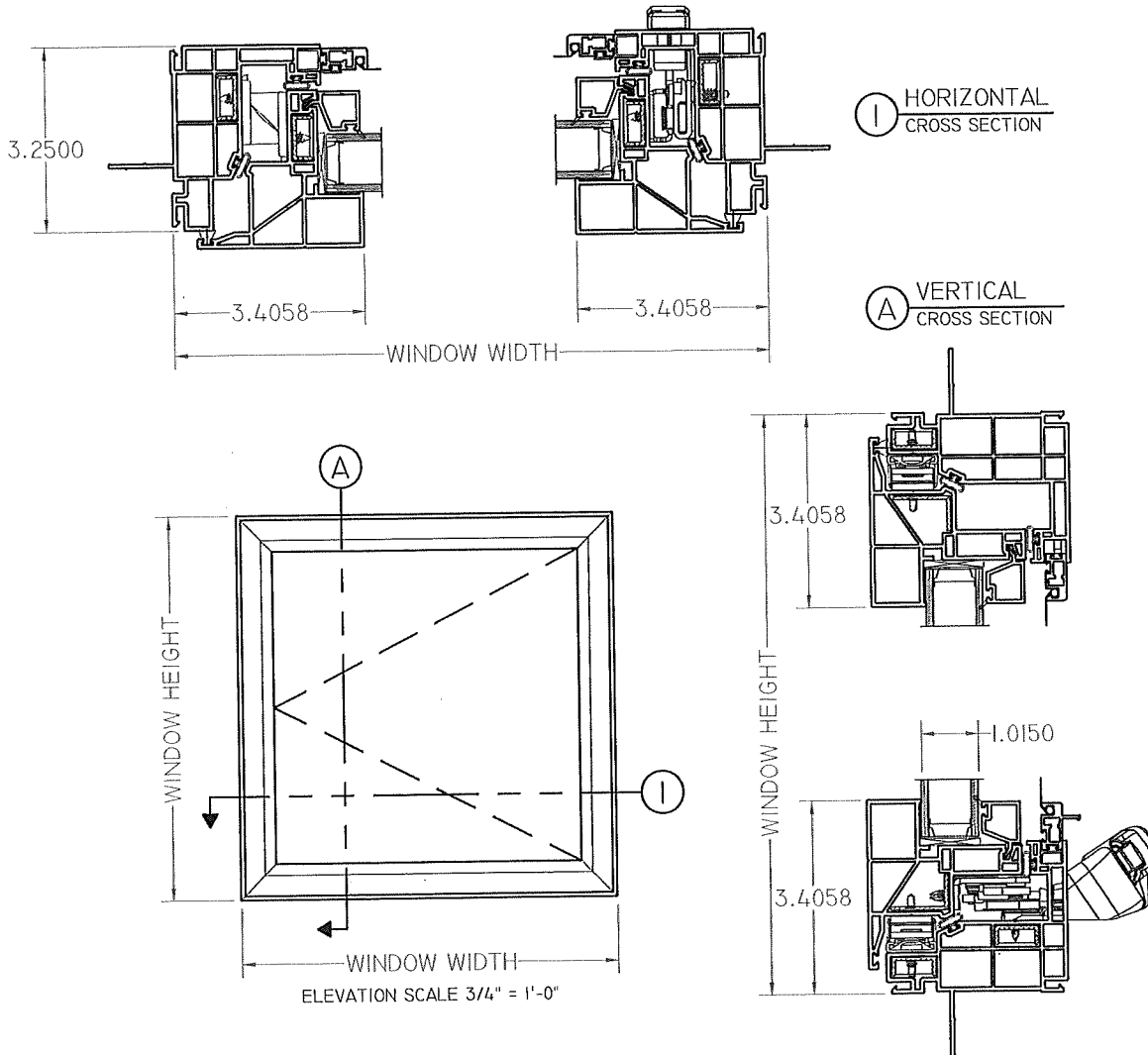




VuPoint Series
3 1/4" Frame Depth
Casement (Project-Out)

VUPOINT CASEMENT

This document contains confidential and proprietary information intended for the private use of Quaker.
 © 2016 Quaker Window Products Co., INC. All rights reserved.
 Quaker reserves the right to change any/all designs without notice. Due to periodic re-certification requirements, result shown may vary.



SCALE 1:3

Our products are tested to the standards of and certified by some of the foremost organizations in the fenestration industry.





Simply Secure 32" x 24" Wave Pattern Hopper-Vented Glass Block Window

Model Number: V3224DC

EVERYDAY LOW PRICE	\$230.54
11% MAIL-IN REBATE Good Through 10/8/23	\$25.36
FINAL PRICE	\$205.18 each

You Save \$25.36 with Mail-In Rebate

- Wave pattern glass features gentle undulations and offers a medium level of privacy while still taking advantage of cost-saving natural light
- Silicone joints provide a clean, all glass look
- Frameless design ready-to-mortar-in-place

[View More Information >](#)

Rough Opening Size: 32"W x 24"H

Ship To Store - Free!

Get it as soon as 10/15/2023



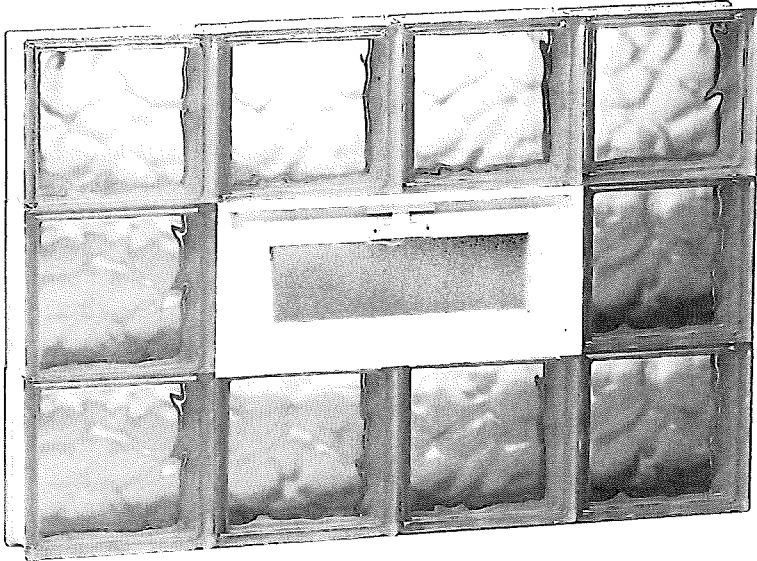
Available for Special Order at [West Milwaukee](#)



[View Shipping & Delivery Options](#)



[Share](#)



#11 PER'D

BASEMENT WINDOWS

[Sign Up](#)

Zip Code

See our special offers and sales, please enter your email address today to get immediate access! We value your privacy and trust at Menards. We will not distribute your information to any other company. View [Privacy Policy](#). This site is protected by reCAPTCHA and the Google [Privacy Policy](#) and [Terms of Service](#) apply.

Close

[Privacy - Terms](#)

Description & Documents

Simply Secure glass block window panels come fully assembled to fit a variety of opening sizes and can enhance the comfort and appearance of any room. They are commonly used as a basement replacement window but are also great for bathrooms, kitchens, sidelights, transoms, garages, and much more. They are easily installed in any residential or commercial masonry opening and can also be used in wood frame openings. Simply Secure glass block windows are more difficult for would-be thieves to penetrate and thus are considered a more secure alternative to traditional windows. Glass block windows are also considered more energy efficient when compared to traditional plate glass windows.



Brand Name: **Simply Secure**



Features

- Wave pattern glass features gentle undulations and offers a medium level of privacy while still taking advantage of cost-saving natural light
- Silicone joints provide a clean, all glass look
- Frameless design ready-to-mortar-in-place
- Made from 3" thick hollow glass block, Simply Secure windows can enhance the security of almost any window opening
- Simple to install, just mortar into any masonry opening under 25 square ft. (may be installed in above-ground and wood frame openings as well)
- Add 1/2" to 2" to the window's actual size to determine the correct rough opening size range (depending upon installation method)
- Vinyl hopper style vent opens to allow the flow of fresh air
- 16"Wx 8"H vented vinyl hopper with sash latch, durable hinges and nylon screen
- Removable screen frame allows for easy screen replacement
- Assembled in the USA of high quality domestic and globally sourced materials
- This item is not for sale to these Provinces, States, or Territories: AK, HI

Specifications

Product Type	Vented Glass Block Window	Material	Glass Block
Collection	Wave	Rough Opening Dimensions	32 W x 24-1/4 H inch
Actual Width	31 inch	Actual Height	23-1/4 inch
Shape	Square Top	Thickness	3-1/8 inch
Jamb Depth	Non-Framed inch	Frame Color/Finish	Non-Framed
Includes	1 Panel, Hopper Vent	Special Features	No Frame, Hopper Vent
U-Value	0.49	Listing Agency Standards	Not Rated
Solar Heat Gain Coefficient	0.7	Air Leakage (AL) Rating	Not Rated CFM
Energy Star Zones	Not Energy Star Certified	Manufacturer Warranty	10 year
Weight	53.8 pound	Shipping Dimensions	3.13 H x 31.00 W x 23.25 D
Shipping Weight	53.8 lbs	Return Policy	Special Order Merchandise (view Return Policy)

Please Note: Prices, promotions, styles and availability may vary by store and online. Inventory is sold and received continuously throughout the day; therefore, the quantity shown may not be available when you get to the store. This inventory may include a store display unit. Online orders and products purchased in-store qualify for rebate redemption. Mail-in Rebate is in the form of merchandise credit check, valid in-store only. Merchandise credit check is not valid towards purchases made on MENARDS.COM®. By submitting this rebate form, you agree to resolve any disputes related to rebate redemption by binding arbitration and you waive any right to file or participate in a class action. Terms and conditions available at www.rebateinternational.com®

see our special offers and sales, please enter your email address today to get immediate access! We value your privacy and trust at Menards. We will not distribute your information to any other company. View [Privacy Policy](#). This site is protected by reCAPTCHA and the Google [Privacy Policy](#) and [Terms of Service](#) apply.

Lisbon Storm

Address: 5006 West Lisbon Avenue

MILWAUKEE, WI 53210

Phone: 4144458899

Fax: 4144458608



Quote

Page 1 of 1

Quote Number:

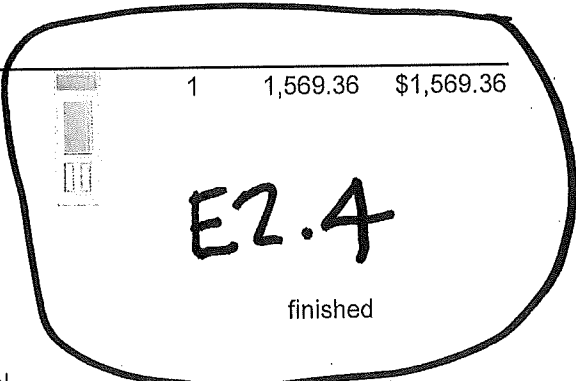
Date: 10/6/2023

Customer Information

Name:
 Address:
 Phone 1:
 Phone 2:
 Fax:
 Contact:

(Images are viewed from exterior where applicable)

Item Description	Qty	Price	Extended
Exterior Door Items			
2' 6" x 6' 8" S206-LE Smooth-Star Fiberglass Door w/Low E Glass - Left Hand Inswing (Tru-Guard Composite Edge); 2-3/8" Backset - Double Bore (2-1/8" Dia. Bore w/Standard 5-1/2" Spacing) w/Faceplate Lockset Latch Prep w/Standard Strike Prep w/Deadbolt 9202 Therma-Tru 2-1/4" Full Lip Strike Prep **Boring selected may not be available, contact office to verify! **; Set of Ball Bearing - Brushed Nickel Hinges ; 31-1/2" x 13-1/2" (Frame Size) CustomLowE Rectangular Transom w/Low E Glass; Primed Dura-Frame - 4-9/16" Jamb w/Dura-Frame Brickmould Exterior Trim (Applied) w/(2)Brushed Nickel Adjustable Security Strike Plates (for Lockset and Deadbolt); Bronze Compression Weatherstrip; Tru-Defense Composite Adj. w/Dark Cap - Mill Finish Sill ; R.O. = 32-1/4" x 95-1/2"	1	1,084.20	\$1,084.20
		unfinished	
2' 6" x 6' 8" S206-LE Smooth-Star Fiberglass Door w/Low E Glass - Left Hand Inswing (Tru-Guard Composite Edge); 2-3/8" Backset - Double Bore (2-1/8" Dia. Bore w/Standard 5-1/2" Spacing) w/Faceplate Lockset Latch Prep w/Standard Strike Prep w/Deadbolt 9202 Therma-Tru 2-1/4" Full Lip Strike Prep **Boring selected may not be available, contact office to verify! **; Set of Ball Bearing - Brushed Nickel Hinges ; 31-1/2" x 13-1/2" (Frame Size) CustomLowE Rectangular Transom w/Low E Glass; White Stipple Dura-Tech Frame - 4-9/16" Jamb w/Dura-Tech White Brickmould Exterior Trim (Applied) w/(2)Brushed Nickel Adjustable Security Strike Plates (for Lockset and Deadbolt); Bronze Compression Weatherstrip; Tru-Defense Composite Adj. w/Dark Cap - Mill Finish Sill ; PREFINISH: Paint Door Panel Interior & Exterior 100 SNOW ; R.O. = 32-1/4" x 95-1/2"	1	1,569.36	\$1,569.36
		finished	



1-REQ'D

Order Sub Total: \$2,653.56
 Tax: \$0.00
 Order Total: \$2,653.56

Distributed by:



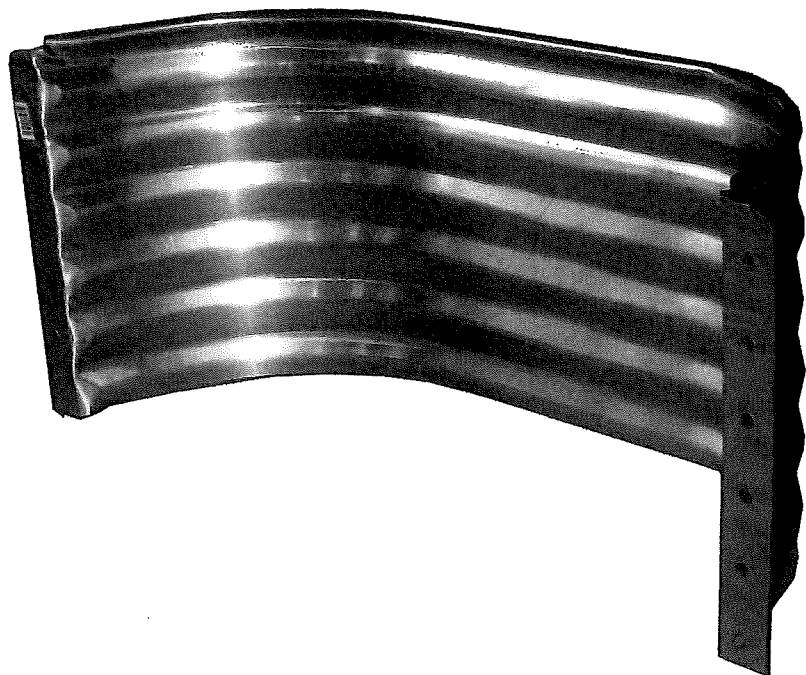
Version #: 1.37-O
 Version Date: 10/2/2023



37" Wide Corrugating 16-1/2" High W x 16-1/2" H x 12" Projection Steel Straight Window Well

Actual Size: 37" Wide x 16-1/2" High x 12" Projection

Model Number: SS3712-18 | Menards® SKU: 4333654



EVERYDAY LOW PRICE **\$33.98**

11% MAIL-IN REBATE Good Through 10/15/23 **\$3.74**

FINAL PRICE **\$30²⁴ each**

You Save \$3.74 with Mail-In Rebate

- Constructed from corrugated, galvanized steel for strength and durability
- Coated with G-60 zinc plating to resist rust and corrosion
- Straight-style window wells minimize projection from the foundation wall

[View More Information >](#)

Window Well Height: 16-1/2" High

Pick Up At Store



9 In-Stock at [West Milwaukee](#), Aisle 148 Section D



[Check Another Store for Availability](#)



[View Shipping & Delivery Options](#)



[Share](#)

[Sign Up](#)

Zip Code

See our special offers and sales, please enter your email address today to get immediate access! We value your privacy and trust at Menards. We will not distribute your information to any other company. View [Privacy Policy](#). This site is protected by reCAPTCHA and the Google [Privacy Policy](#) and [Terms of Service](#) apply.

Close

[Privacy](#) - [Terms](#)

Description & Documents

Lux-Right™ window wells allow air and light into basement windows or below-grade structures by acting as a structural barrier to hold back the surrounding backfill. Constructed from tough, galvanized, corrugated steel, this window well is designed to ensure superior strength and long-lasting use.

Brand Name: St. Paul Corrugating

Features

- Constructed from corrugated, galvanized steel for strength and durability
- Coated with G-60 zinc plating to resist rust and corrosion
- Straight-style window wells minimize projection from the foundation wall
- Roll-formed top bead edge for additional strength and to eliminate sharp edge
- Sleeve or wedge-type anchors are installed through prepunched flanges at 12" centers to ensure structural stability

Specifications

Product Type	Straight Window Wells	Actual Width	37 inch
Actual Height	16-1/2 inch	Projection	12 inch
For Use With	39" x 13" Straight Window Well Covers	Color/Finish	Galvanized
Material	Metal	Includes	1 Window Well
Manufacturer Warranty	1 year	Meets IRC for Egress	No
Shipping Dimensions	41.00 H x 18.00 W x 12.00 D	Shipping Weight	9.4375 lbs
Return Policy	Regular Return (view Return Policy)		

lease Note: Prices, promotions, styles and availability may vary by store and online. Inventory is sold and received continuously throughout the day; therefore, the quantity shown may not be available when you arrive at the store. This inventory may include a store display unit. Online orders and products purchased in-store qualify for rebate redemption. Mail-in Rebate is in the form of merchandise credit check, valid in-store only. Merchandise credit check is not valid towards purchases made on MENARDS.COM®. By submitting this rebate form, you agree to resolve any disputes related to rebate redemption by binding arbitration and you waive any right to file or participate in a class action. Terms and conditions available at www.rebateinternational.com®.

See our special offers and sales, please enter your email address today to get immediate access! We value your privacy and trust at Menards. We will not distribute your information to any other company. View our [Privacy Policy](#). This site is protected by reCAPTCHA and the Google [Privacy Policy](#) and [Terms of Service](#) apply.



Panel

Model Number: LAT2496-01 | Menards® SKU: 1124504

EVERYDAY LOW PRICE \$13.98
 11% MAIL-IN REBATE Good Through 10/15/23 \$1.54
FINAL PRICE **\$12.44** each

You Save \$1.54 with Mail-In Rebate

- Polypropylene
- No sealing or painting needed
- Insect resistant

[View More Information >](#)

Variation: White

Pick Up At Store



9 In-Stock at [West Milwaukee](#) Aisle 1212 Section A



[Check Another Store for Availability](#)



[View Shipping & Delivery Options](#)



[Share](#)

Description & Documents

Unlike wood, these plastic lattice panels are low-maintenance and will never separate, split apart, or splinter. They are also resistant to fading and insects. Use these panels to finish off your deck project, or create privacy in an outdoor space.



[Click here to see more products from Grid Axcents](#)

Features

- Polypropylene
- No sealing or painting needed
- Insect resistant
- Easy to install
- Fade resistant
- Use C and H channels for easy framing and connecting
- Can be cut with a fine tooth saw blade

Specifications

Product Type	Vinyl Lattice	Material	Vinyl
Actual Thickness	1/8 inch	Color/Finish	White
Actual Height	24 inch	Grid Opening Size	2-3/4 inch

Zip Code

Sign Up

...see our special offers and sales, please enter your email address today to get immediate...
...CESS! We value your privacy and trust at Menards. We will not distribute your information to any other company. View...
...[Privacy Policy](#). This site is protected by reCAPTCHA and the Google [Privacy Policy](#) and [Terms of Service](#) apply.

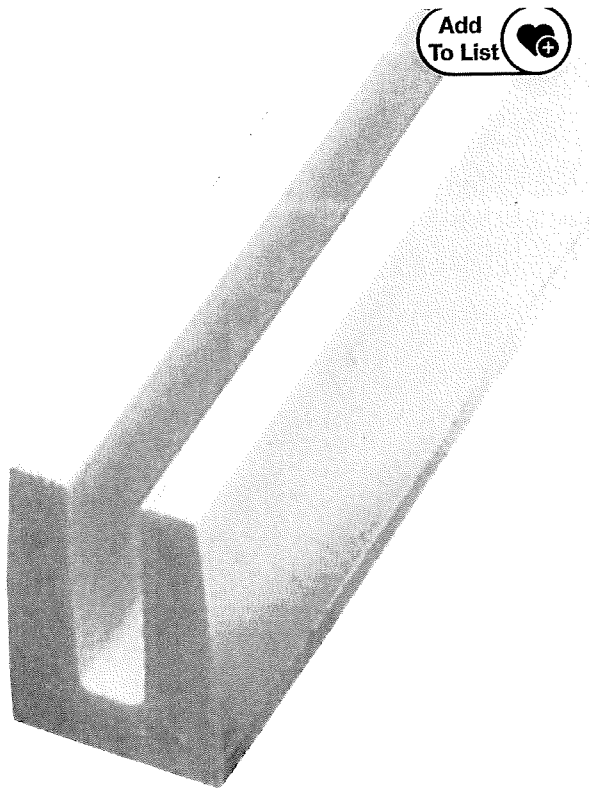
Close

[Privacy - Terms](#)

Please Note: Prices, promotions, styles and availability may vary by store and online. Inventory is sold and received continuously throughout the day; therefore, the quantity shown may not be available when you get to the store. This inventory may include a store display unit. Online orders and products purchased in-store qualify for rebate redemption. Mail-in Rebate is in the form of merchandise credit check, valid in-store only. Merchandise credit check is not valid towards purchases made on MENARDS.COM®. By submitting this rebate form, you agree to resolve any disputes related to rebate redemption by binding arbitration and you waive any right to file or participate in a class action. Terms and conditions available at www.rebateinternational.com®



See our special offers and sales, please enter your email address today to get immediate access! We value your privacy and trust at Menards. We will not distribute your information to any other company. View our [Privacy Policy](#). This site is protected by reCAPTCHA and the Google [Privacy Policy](#) and [Terms of Service](#) apply.



Model Number: LATCAP-01 | Menards® SKU: 1124643

EVERYDAY LOW PRICE \$7.97
 11% MAIL-IN REBATE Good Through 10/15/23 \$0.88
FINAL PRICE **\$7.09**
each

You Save \$0.88 with Mail-In Rebate

- HDPE (High Density Poly Ethylene)
- No sealing or painting needed
- Insect resistant

[View More Information >](#)

Variation: White

Pick Up At Store

5 In-Stock at [West Milwaukee](#) Aisle 1212 Section B

Check Another Store for Availability

View Shipping & Delivery Options

Share

Description & Documents

These C channels are impact and fade resistant. Like the lattice, they can be sawn, sanded and drilled to fit your project. C channels are a great way to cover cut edges and give your lattice a finished look.

Features

- HDPE (High Density Poly Ethylene)
- No sealing or painting needed
- Insect resistant
- Easy to install
- Fade resistant
- Although the C channels are very sturdy, they are not meant to be the sole means of support for the lattice panels
- Can be cut with a fine tooth saw blade
- Designed to work with lattice up to 1/8" thick

Click here to see more products from [Grid Axcents](#)

Specifications

Product Type	Lattice Accessories	Material	Vinyl
Actual Thickness	1/2 inch	Color/Finish	White
Actual Height	1-1/8 inch	Actual Width	96 inch

see our special offers and sales, please enter your email address today to get immediate access! We value your privacy and trust at Menards. We will not distribute your information to any other company. View [Privacy Policy](#). This site is protected by reCAPTCHA and the Google [Privacy Policy](#) and [Terms of Service](#) apply.

email@address.com

Zip Code

[Privacy - Terms](#)

Please Note: Prices, promotions, styles and availability may vary by store and online. Inventory is sold and received continuously throughout the day; therefore, the quantity shown may not be available when you get to the store. This inventory may include a store display unit. Online orders and products purchased in-store qualify for rebate redemption. Mail-in Rebate is in the form of merchandise credit check, valid in-

BSMT. WDW DETAIL

