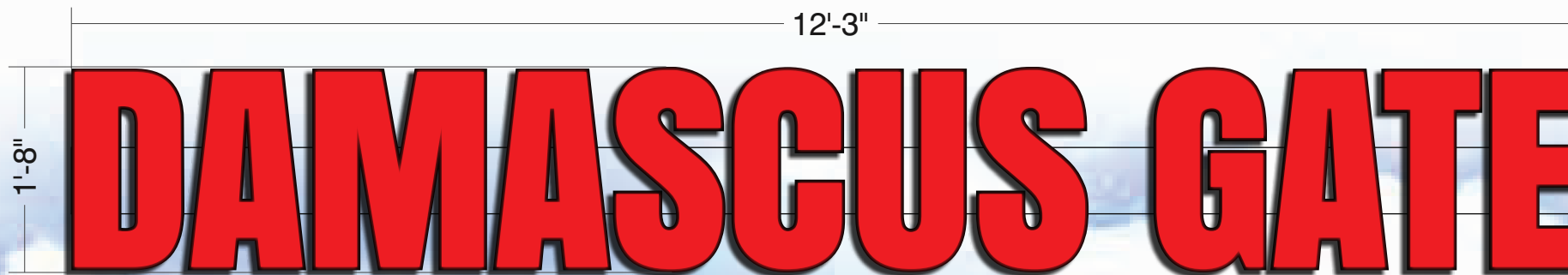




2500 South 170th Street
New Berlin, Wisconsin 53151
Proudly Made In the USA!

wire bauersignusa.com
voice 262.784.0500
fax 262.784.6675

SAVED AS	Damascus Gate
LOCATION	Mitchell St MKE
CLIENT	
SALES REP	Dave Salkin
DATE	03/12/19
REVISION	

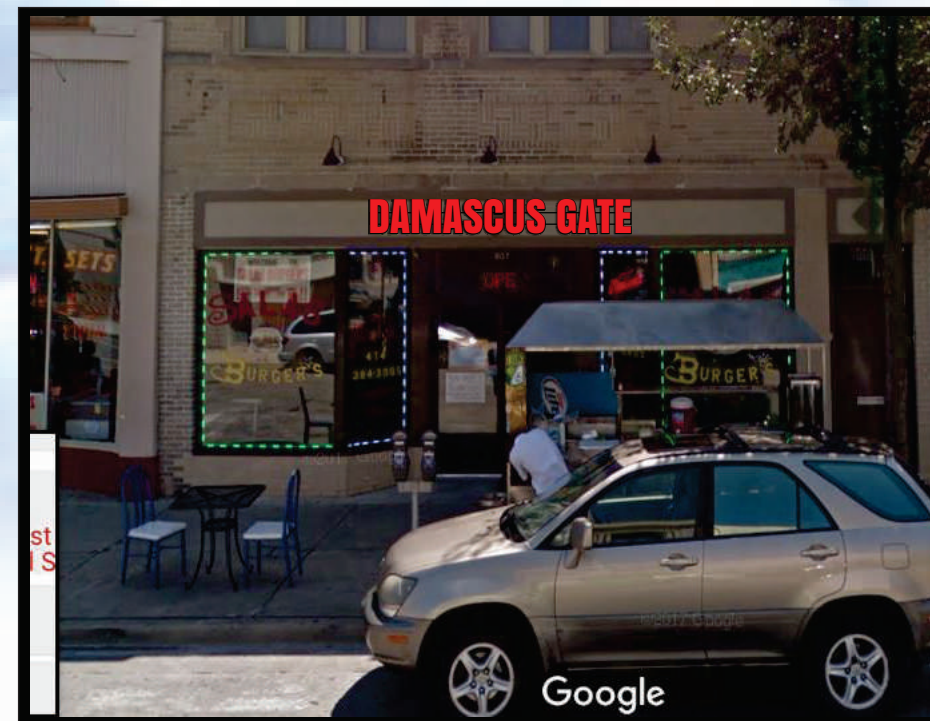


SPECIFICATIONS

FABRICATE (1SET) INTERNALLY ILLUMINATED,
FLUSH MOUNTED CHANNEL LETTERS.

- **FACES** TO BE RED PLEXIGLASS
- **RETURNS** TO BE .050X3" AND BACKS TO BE .050 ALUMINUM
- **TRIMCAPS** TO BE 1" BLACK
- **EXTERIORS** TO BE BLACK
- **INTERIORS** TO BE WHITE
- **ILLUMINATED** WITH RED LEDs
- **POWERED** WITH APPROPRIATE LOAD POWER SUPPLIES
- **RACEWAY** TO BE 5" X 3.5" X 110" ALUMINUM EXTRUSION PAINTED BLACK

Damascus Gate Illuminated Channel letters



Printed artwork colors are not always representative of final product colors. Please refer to specifications for call out or salesman for samples

These drawings are the exclusive property of Bauer Sign Company. Not to be duplicated in any way without expressed written permission!

**FINAL ELECTRICAL
CONNECTION IS CLIENT'S
RESPONSIBILITY**

our products are certified by:
 Underwriters Laboratories, Inc.

This sign shall be manufactured in accordance with Article 600 of the National Electrical Code and / or the applicable local codes. This includes proper grounding and bonding of the sign. Sign shall bear correct UL Labels.

Scale: 1" - 1'