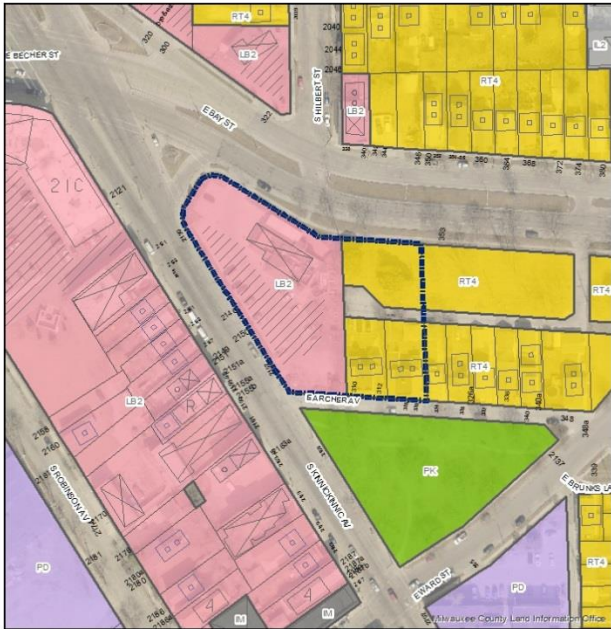


File No. 170164. A substitute ordinance relating to the change in zoning from Local Business, LB2, and Two-Family Residential, RT4, to a Detailed Planned Development, DPD, for mixed-use residential development on land located on the east side of South Kinnickinnic Avenue, south of East Bay Street, in the 14th Aldermanic District.



File No. 170164
LB2 and RT4 to DPD
June 2017

- Legend**
- Zoning Change Boundary
- Zoning**
- Commercial - Commercial Service
 - Commercial - Neighborhood Shopping
 - Commercial - Local Business
 - Commercial - Regional Business
 - Downtown
 - Industrial - Office
 - Industrial - Light
 - Industrial - Mix
 - Industrial - Heavy
 - Residential - Single-Family
 - Residential - Townhouse
 - Residential - Medium-Density
 - Residential - Rural
 - Special - Parks
 - Special - Institutional
 - Special - Planned
 - Special - Redevelopment



File No. 170164. Site Context Photos.



View from Bay Street, looking west



View from KK and Bay



View from KK and Archer