

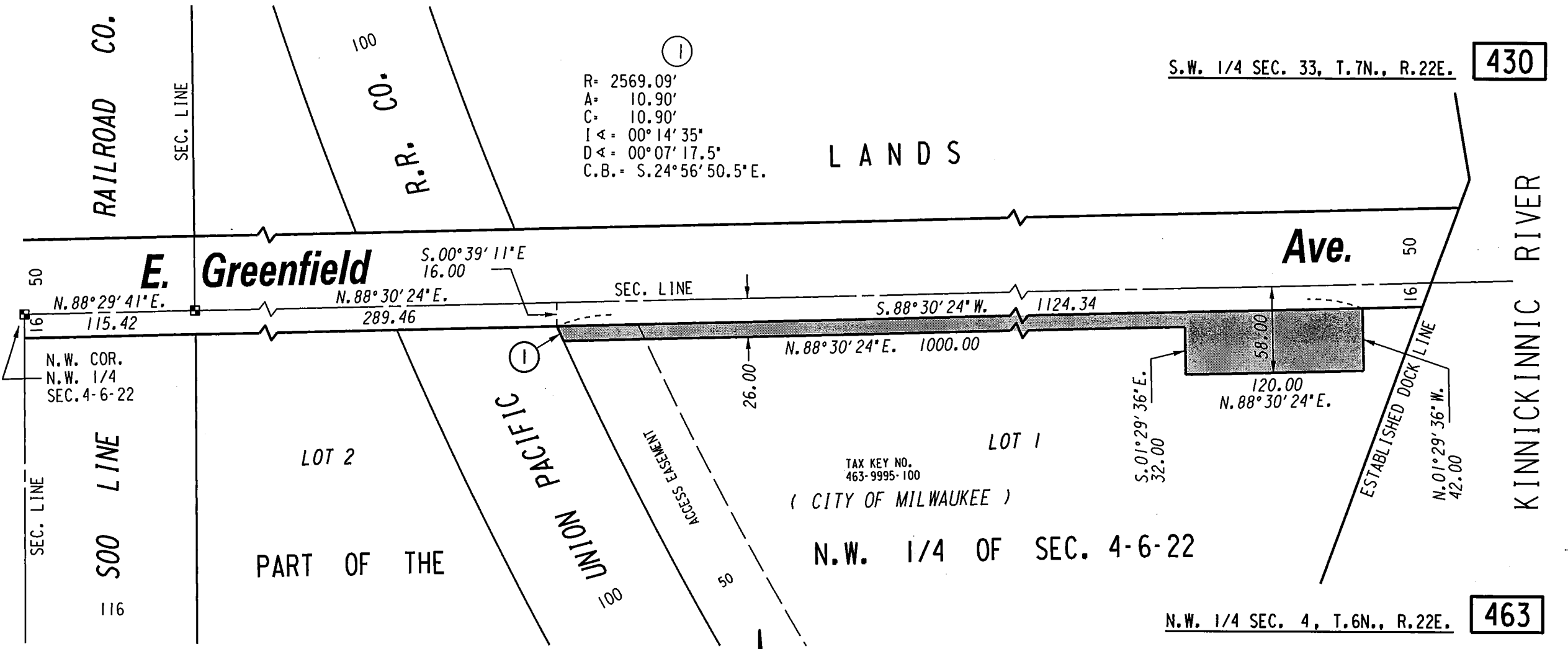
S.W. 1/4 SEC. 33, T.7N., R.22E. **430**

①
R= 2569.09'
A= 10.90'
C= 10.90'
I Δ = 00° 14' 35"
D Δ = 00° 07' 17.5"
C.B. = S.24° 56' 50.5" E.

LANDS

E. Greenfield Ave.

Ave.



N.W. COR.
N.W. 1/4
SEC. 4-6-22


LOT 2

LOT 1

TAX KEY NO.
463-9995-100
(CITY OF MILWAUKEE)

N.W. 1/4 OF SEC. 4-6-22

N.W. 1/4 SEC. 4, T.6N., R.22E. **463**

 PORTION OF CITY PROPERTY
TO BE DEDICATED FOR
PUBLIC STREET PURPOSES

FILE NO. 181205
INFRASTRUCTURE SERVICES DIVISION

MILWAUKEE, WISCONSIN

ASSIGNED TO: W.E. FUCHS CH'K'D. BY: W.E. FUCHS
DRAWN BY: W.E.F. DATE: DEC. 3, 2018
PROJECT/GRANT NO.: ST3211130136 SCALE: 1" = 80'
APPROVED BY:

Yuan Wang

Jim Smith

CENTRAL DRAFTING & RECORDS MANAGER

CITY ENGINEER