

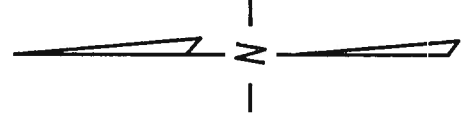
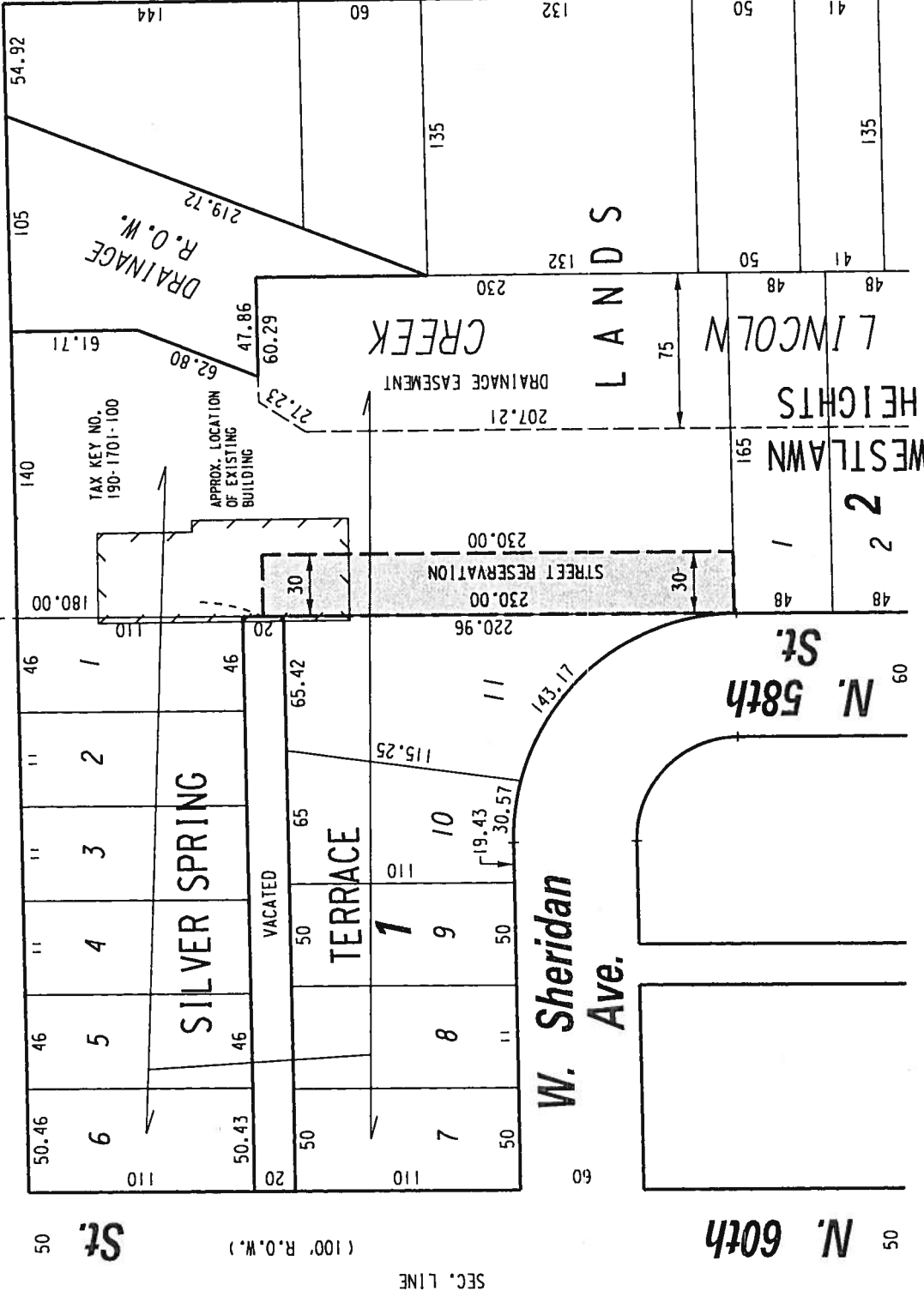
190

N.W. 1/4 SEC. 35, T.8N., R.21E.

SEC. LINE (120' R.O.W.)

330.48
W. Silver Spring

N.W. COR.
N.W. 1/4 SEC. 35-8-21



FILE NO.
INFRASTRUCTURE SERVICES DIVISION
MILWAUKEE, WISCONSIN

ASSIGNED TO: W. FUCHS
CH'K'D. BY: W. FUCHS
DRAWN BY: W.F.
DATE: JUNE 23, 2015
PROJECT/GRANT NO.: WK52360085
SCALE: 1" = 80'
APPROVED BY:

Marcia Connell
CENTRAL DRAFTING & RECORDS MANAGER
CITY ENGINEER

RESERVATION FOR PUBLIC STREET PURPOSES PROPOSED TO BE REJECTED