

**LEGEND:**

	SECTION 1/4 SECTION LINE
	PROPERTY LINE
	EASEMENT
	CHAIN LINK FENCE
	TREE LINE
	OVERHEAD UTILITY LINE
	ELECTRIC
	TELEPHONE
	FIBER OPTIC
	CABLE TV
	SANITARY SEWER
	FORCE MAIN
	STORM SEWER
	WATER MAIN
	GAS
	EXISTING CONTOUR

	MANHOLE		IRON PIPE FOUND/SET
	CATCH BASIN		REBAR FOUND/SET
	CATCH BASIN (ROUND)		CHISELED CROSS FOUND/SET
	ROOF DRAIN		PK NAIL FOUND/SET
	HYDRANT		SPIKE/NAIL
	WATER VALVE		MONUMENT
	GAS VALVE		BENCHMARK
	UTILITY POLE		SIGN
	GUY WIRE		DECIDUOUS TREE
	GAS METER		CONIFEROUS TREE
	ELECTRIC METER		BUSH
	UTILITY PEDESTAL		POST
	TRAFFIC SIGNAL		
	LIGHT POLE		
	SOIL BORING		
	MONITORING WELL		

**GENERAL NOTES:**

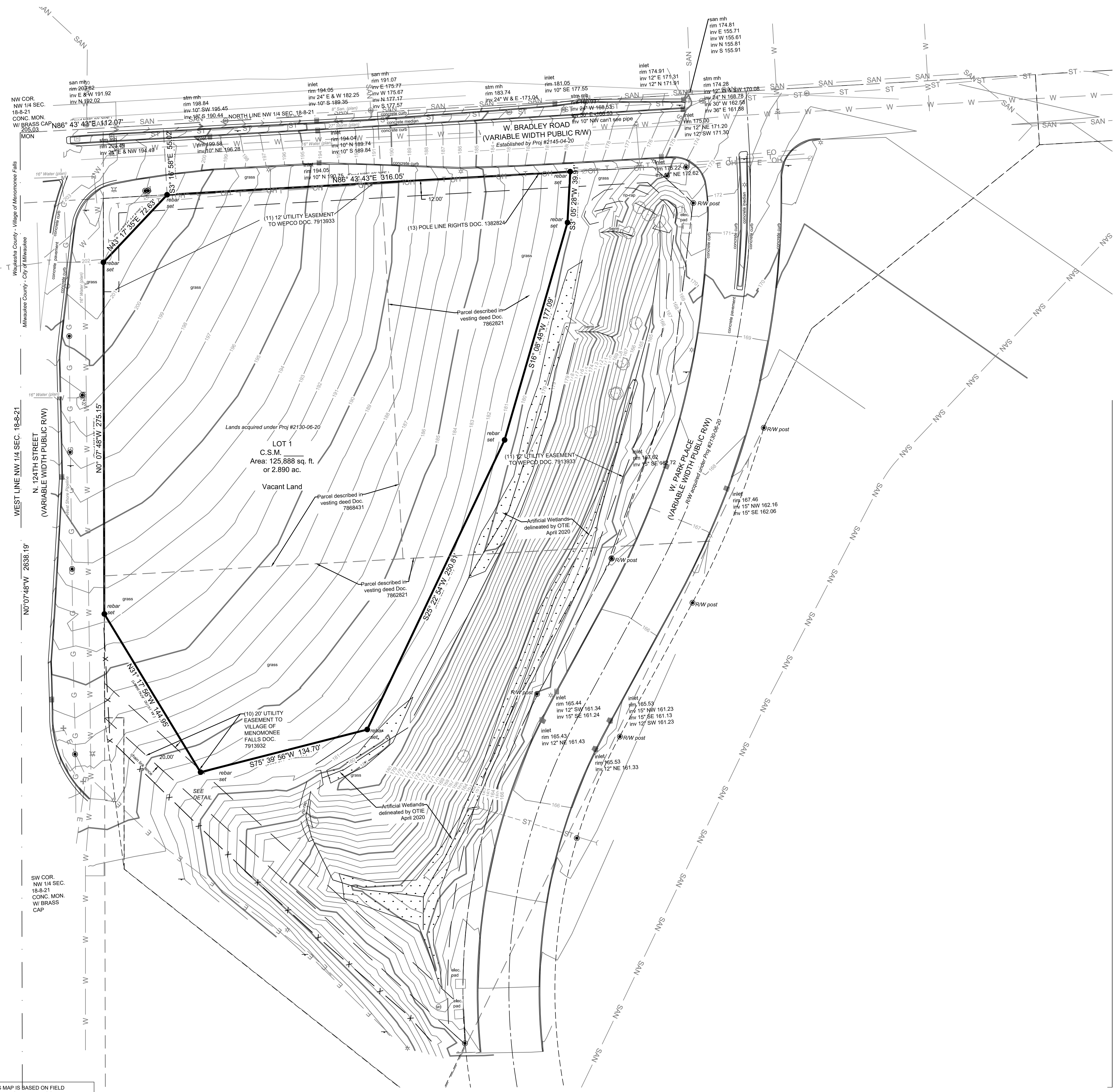
1. THE UNDERGROUND UTILITY INFORMATION SHOWN ON THIS DRAWING IS BASED ON FIELD LOCATIONS AND/OR RECORDS FURNISHED BY MUNICIPALITIES AND UTILITY COMPANIES. THE LOCATION AND ACCURACY OF WHICH CANNOT BE GUARANTEED. THERE MAY BE ADDITIONAL UNDERGROUND UTILITY INSTALLATIONS WITHIN THE PROJECT AREA THAT ARE NOT SHOWN.
2. VERIFY ACTUAL LOCATIONS AND INVERTS IN THE FIELD. ANY POTENTIAL ERRORS, OMISSIONS, OR DISCREPANCIES SHALL BE BROUGHT TO THE ATTENTION OF THE ENGINEER PRIOR TO PROCEEDING WITH CONSTRUCTION.
3. DRAWING IS BASED ON FIELD SURVEY COMPLETED BY XXXXXX ON XXXXXX.
4. DATUM FOR THE PROJECT SURVEY IS XXXXXX. BENCHMARK FOR THE PROJECT SURVEY IS XXXXXX.
5. CONTRACTOR TO VERIFY EXISTING CONDITIONS. CONTACT ENGINEER WITH DISCREPANCIES.

NO. REVISION	DATE	BY
SITE REVISION	01-25-21	SMM

19092 SITE SURVEY.DWG

DRAWN BY:	JRG
DATE:	07-29-2020
PROJECT NO:	19092
CHECKED BY:	SMM
APPROVED BY:	JBL
SHEET NO.:	

**C001**



TO OBTAIN LOCATIONS OF PARTIAL/MISSING FACILITIES BEFORE YOU DIG OR RECORD

CALL DIGGERS HOTLINE  
 1-800-242-8511  
 TOLL FREE

WI STATE 182.0175(94)  
 REQUIRES MIN. 3 WORK DAYS  
 NOTICE BEFORE YOU EXCAVATE  
 MILW. AREA 259-1181

**WOODSPRING SUITES DEVELOPMENT  
 MILWAUKEE, WI**

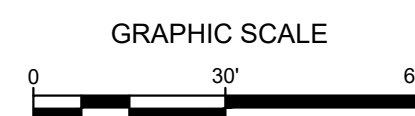
**EROSION CONTROL PLAN**

NO.	REVISION	DATE	BY
1	SITE REVISION	01-25-21	SMM

19092 EROSION CONTROL PLAN.DWG

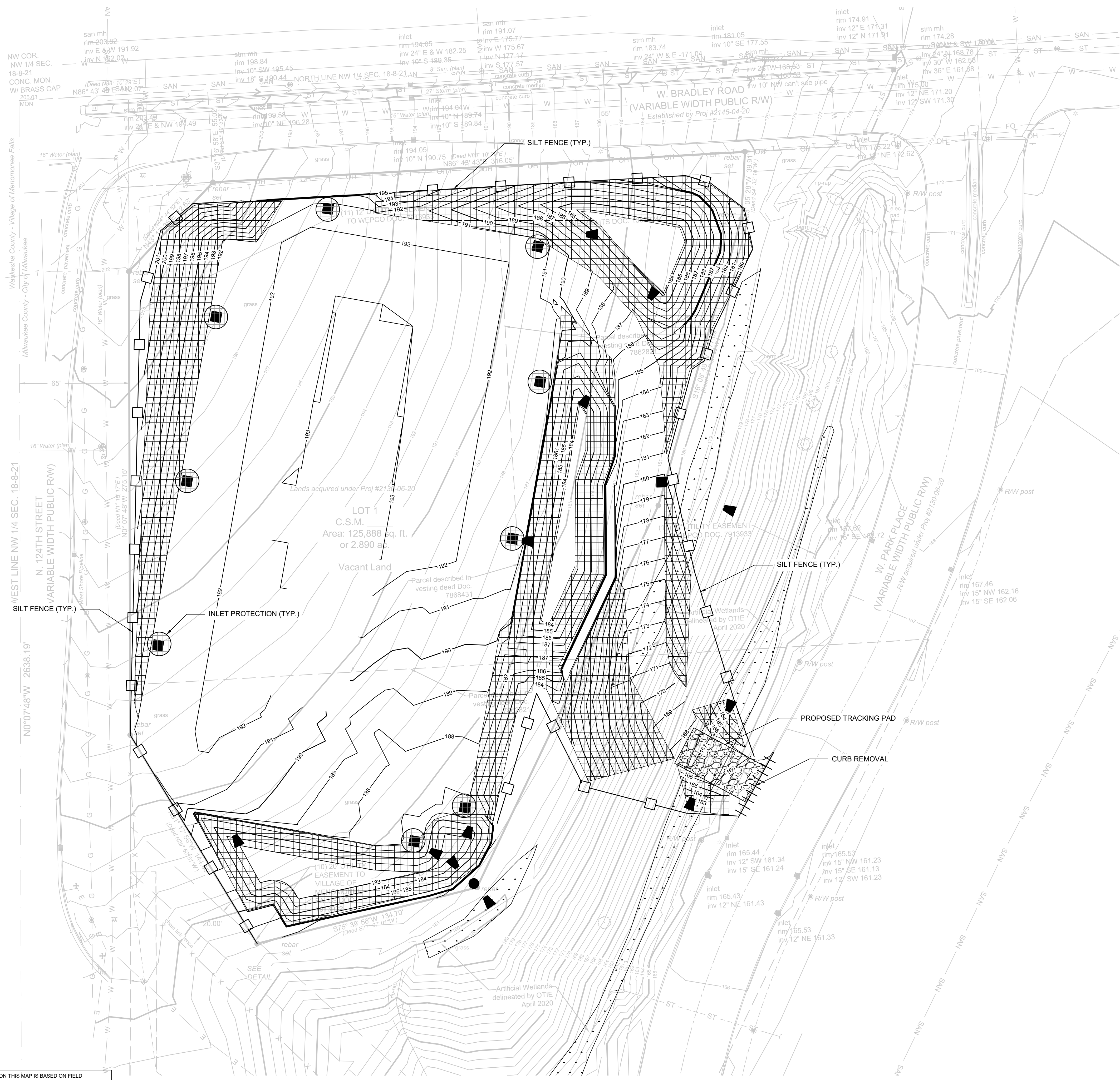
DRAWN BY:	JRG
DATE:	07-29-2020
PROJECT NO:	19092
CHECKED BY:	SMM
APPROVED BY:	JBL
SHEET NO.:	

**C002**



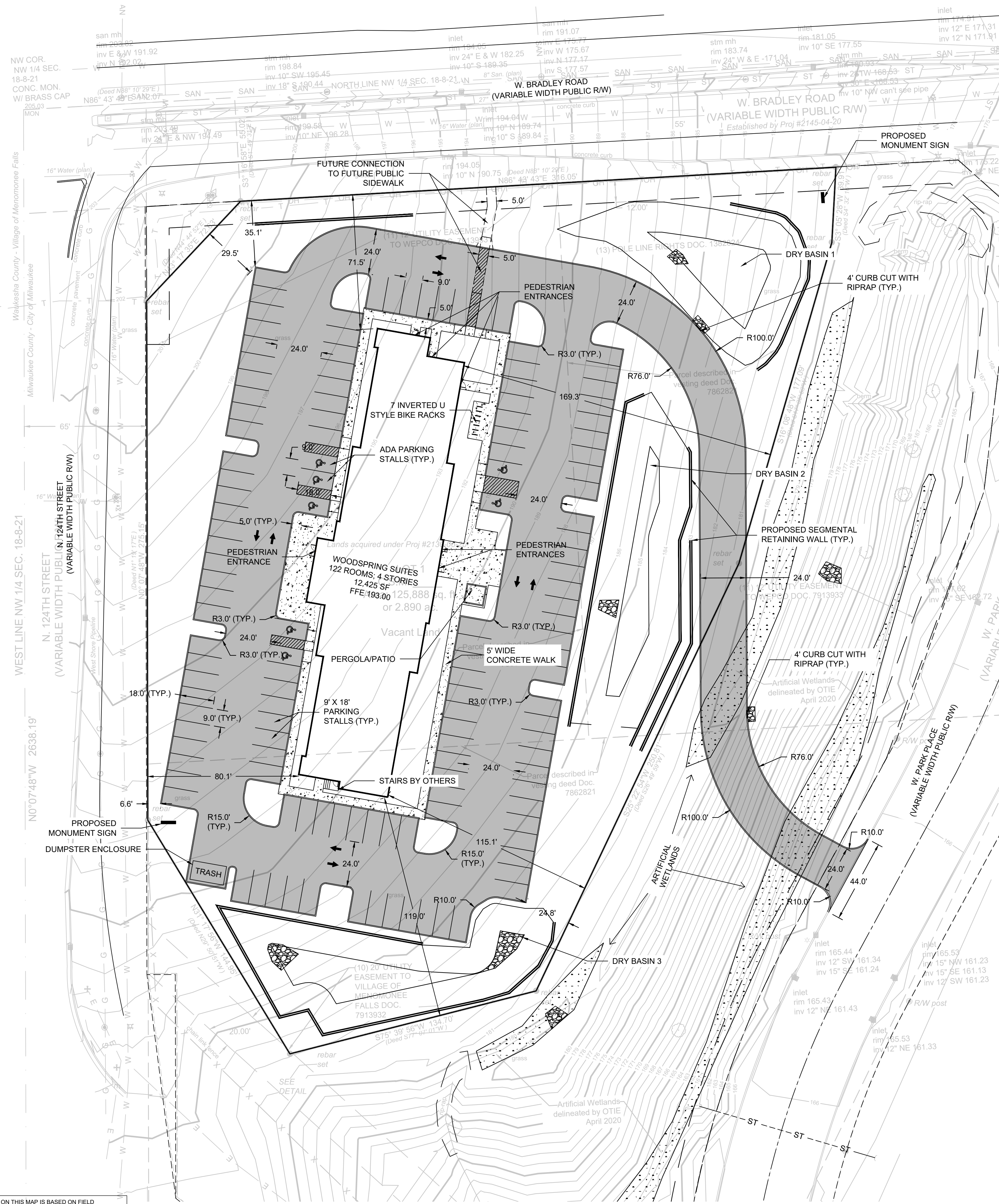
- LEGEND:**
- PROPOSED SILT FENCE (X C400)
  - ⊙ PROPOSED INLET PROTECTION (X C400)
  - ◻ PROPOSED TRACKING PAD (X C400)
  - ➔ PROPOSED DIVERSION SWALE WITH DIRECTION OF FLOW INDICATED (X C400)
  - PROPOSED DITCH CHECK EROSION BALES (X C400)
  - ▤ PROPOSED EROSION MATTING WISDOT APPROVED CLASS 1 TYPE B (X C400)
  - ◻ PROPERLY ANCHORED SEED AND MULCH INSTALLED WHEN SLOPE IS AT FINISHED GRADE (X C400)
  - ▨ PROPOSED RIP-RAP SWALE BOTTOM (X C400)
  - 5 — EXISTING CONTOUR
  - 5 — PROPOSED CONTOUR
  - ||||| UTILITY REMOVAL
  - ⊗ STRUCTURE REMOVAL
  - ▭ PAVEMENT REMOVAL
  - ||||| CURB REMOVAL

- GENERAL NOTES:**
1. THE UNDERGROUND UTILITY INFORMATION SHOWN ON THIS DRAWING IS BASED ON FIELD LOCATIONS AND/OR RECORDS FURNISHED BY MUNICIPALITIES AND UTILITY COMPANIES. THE LOCATION AND ACCURACY OF WHICH CANNOT BE GUARANTEED. THERE MAY BE ADDITIONAL UNDERGROUND UTILITY INSTALLATIONS WITHIN THE PROJECT AREA THAT ARE NOT SHOWN.
  2. VERIFY ACTUAL LOCATIONS AND INVERTS IN THE FIELD. ANY POTENTIAL ERRORS, OMISSIONS, OR DISCREPANCIES SHALL BE BROUGHT TO THE ATTENTION OF THE ENGINEER PRIOR TO PROCEEDING WITH CONSTRUCTION.
  3. WORK TO BE COMPLETED IS INDICATED IN BOLD TYPE LINES AND EXISTING CONDITIONS ARE INDICATED BY LIGHT TYPE LINES.
  4. ELECTRONIC CIVIL FILES ARE AVAILABLE UPON WRITTEN REQUEST. DO NOT USE ELECTRONIC CIVIL FILES TO LAYOUT FOUNDATIONS, COLUMN LINES, LIGHT POLES, OR OTHER NON CIVIL SITE WORK. REFER TO ARCHITECTURAL DRAWINGS FOR DIMENSIONS OF BUILDING AND ARCHITECTURAL FEATURES.
  5. SEE SHEET XXX FOR A COMPLETE LIST OF EROSION CONTROL NOTES AND DETAILS. EROSION CONTROL MEASURES SHALL BE INSTALLED PRIOR TO START OF LAND DISTURBING ACTIVITIES.
  6. DO NOT BEGIN LAND DISTURBING ACTIVITIES UNTIL AN EROSION CONTROL PERMIT IS OBTAINED FROM LOCAL JURISDICTION.



CALL DIGGERS HOTLINE  
 1-800-242-8511  
 TOLL FREE  
 WI STATE 182.0175(974)  
 REQUIRES MIN. 3 WORK DAYS  
 NOTICE BEFORE YOU EXCAVATE  
 MILW. AREA 259-1181

THE UNDERGROUND UTILITY INFORMATION SHOWN ON THIS MAP IS BASED ON FIELD MARKINGS AND INFORMATION FURNISHED BY UTILITY COMPANIES AND THE LOCAL MUNICIPALITY. WHILE THIS INFORMATION IS BELIEVED TO BE RELIABLE, ITS ACCURACY AND COMPLETENESS CANNOT BE GUARANTEED.



**SITE INFORMATION:**

SITE PARCEL AREA = 2.890 AC  
 TOTAL DISTURBED AREA = 2.985 AC  
 EXISTING IMPERVIOUS AREA = 0.000 AC  
 PROPOSED IMPERVIOUS AREA = 1.415 AC  
 LAND DEVOTED TO PARKING/DRIVES = 1.142 AC  
 LAND DEVOTED TO OPEN SPACE = 1.343 AC  
 TOTAL PARKING STALLS = 130  
 HC PARKING STALLS = 7  
 PARKING SPACE RATIO PER UNIT = 1.06

**LEGEND:**

- 5' THICK CONCRETE WALK (X C401)
- CONCRETE PAVEMENT (X C401)
- ASPHALT SURFACE (X C401)
- CURB & GUTTER (ACCEPT) (X C401)
- CURB & GUTTER (REJECT) (X C401)

**GENERAL NOTES:**

1. THE UNDERGROUND UTILITY INFORMATION SHOWN ON THIS DRAWING IS BASED ON FIELD LOCATIONS AND/OR RECORDS FURNISHED BY MUNICIPALITIES AND UTILITY COMPANIES. THE LOCATION AND ACCURACY OF WHICH CANNOT BE GUARANTEED. THERE MAY BE ADDITIONAL UNDERGROUND UTILITY INSTALLATIONS WITHIN THE PROJECT AREA THAT ARE NOT SHOWN.
2. VERIFY ACTUAL LOCATIONS AND INVERTS IN THE FIELD. ANY POTENTIAL ERRORS, OMISSIONS, OR DISCREPANCIES SHALL BE BROUGHT TO THE ATTENTION OF THE ENGINEER PRIOR TO PROCEEDING WITH CONSTRUCTION.
3. WORK TO BE COMPLETED IS INDICATED IN BOLD TYPE LINES AND EXISTING CONDITIONS ARE INDICATED BY LIGHT TYPE LINES.
4. ELECTRONIC CIVIL FILES ARE AVAILABLE UPON WRITTEN REQUEST. DO NOT USE ELECTRONIC CIVIL FILES TO LAYOUT FOUNDATIONS, COLUMN LINES, LIGHT POLES, OR OTHER NON CIVIL SITE WORK. REFER TO ARCHITECTURAL DRAWINGS FOR DIMENSIONS OF BUILDING AND ARCHITECTURAL FEATURES.
5. DIMENSIONS ARE FROM FACE OF CURB OR EDGE OF PAVEMENT.
6. WORK WITHIN THE PUBLIC RIGHT OF WAY, INCLUDING BUT NOT LIMITED TO DRIVEWAY OPENINGS, SIDEWALK AND RAMPS, PAVING, AND CURB AND GUTTER SHALL BE COMPLETED PER MUNICIPAL AND/OR COUNTY REQUIREMENTS AND STANDARDS.



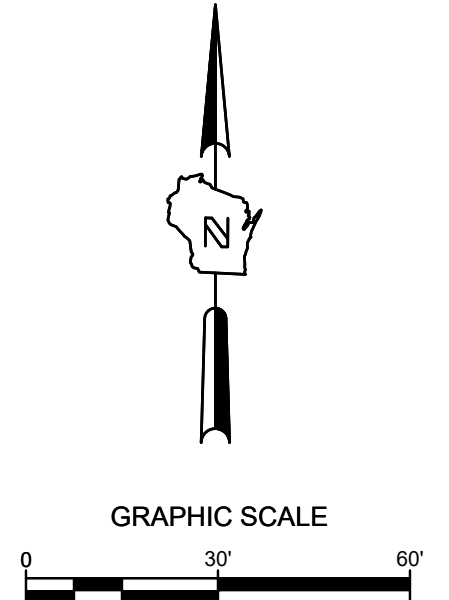
CALL DIGGERS HOTLINE  
 1-800-242-8511  
 TOLL FREE  
 WI STATE 182.0175(974)  
 REQUIRES MIN. 3 WORK DAYS  
 NOTICE BEFORE YOU EXCAVATE  
 MILW. AREA 259-1181

THE UNDERGROUND UTILITY INFORMATION SHOWN ON THIS MAP IS BASED ON FIELD MARKINGS AND INFORMATION FURNISHED BY UTILITY COMPANIES AND THE LOCAL MUNICIPALITY. WHILE THIS INFORMATION IS BELIEVED TO BE RELIABLE, ITS ACCURACY AND COMPLETENESS CANNOT BE GUARANTEED.

NO. REVISION	DATE	BY
SITE REVISION	01-25-21	SMM

DRAWN BY:	JRG
DATE:	07-29-2020
PROJECT NO:	19092
CHECKED BY:	SMM
APPROVED BY:	JBL
SHEET NO.:	

**C100**



**LEGEND:**

	5" THICK CONCRETE WALK	(X) C401
	CONCRETE PAVEMENT	(X) C401
	ASPHALT SURFACE	(X) C401
	CURB & GUTTER (ACCEPT)	(X) C401
	CURB & GUTTER (REJECT)	(X) C401
	EXISTING CONTOUR	
	PROPOSED CONTOUR	
	PROPOSED CURB & GUTTER SPOT GRADE T/C: TOP OF CURB GRADE F/L: FLOW LINE CURB GRADE	
	PROPOSED ASPHALT SPOT GRADE	
	EXISTING SURFACE SPOT GRADE (MATCH)	

**GENERAL NOTES:**

1. THE UNDERGROUND UTILITY INFORMATION SHOWN ON THIS DRAWING IS BASED ON FIELD LOCATIONS AND/OR RECORDS FURNISHED BY MUNICIPALITIES AND UTILITY COMPANIES. THE LOCATION AND ACCURACY OF WHICH CANNOT BE GUARANTEED. THERE MAY BE ADDITIONAL UNDERGROUND UTILITY INSTALLATIONS WITHIN THE PROJECT AREA THAT ARE NOT SHOWN.
2. VERIFY ACTUAL LOCATIONS AND INVERTS IN THE FIELD. ANY POTENTIAL ERRORS, OMISSIONS, OR DISCREPANCIES SHALL BE BROUGHT TO THE ATTENTION OF THE ENGINEER PRIOR TO PROCEEDING WITH CONSTRUCTION.
3. WORK TO BE COMPLETED IS INDICATED IN BOLD TYPE LINES AND EXISTING CONDITIONS ARE INDICATED BY LIGHT TYPE LINES.
4. ELECTRONIC CIVIL FILES ARE AVAILABLE UPON WRITTEN REQUEST. DO NOT USE ELECTRONIC CIVIL FILES TO LAYOUT FOUNDATIONS, COLUMN LINES, LIGHT POLES, OR OTHER NON CIVIL SITE WORK. REFER TO ARCHITECTURAL DRAWINGS FOR DIMENSIONS OF BUILDING AND ARCHITECTURAL FEATURES.
5. DIMENSIONS ARE FROM FACE OF CURB OR EDGE OF PAVEMENT.
6. WORK WITHIN THE PUBLIC RIGHT OF WAY, INCLUDING BUT NOT LIMITED TO DRIVEWAY OPENINGS, SIDEWALK AND RAMPS, PAVING, AND CURB AND GUTTER SHALL BE COMPLETED PER MUNICIPAL AND/OR COUNTY REQUIREMENTS AND STANDARDS.
7. EARTHWORK SHALL BE IN ACCORDANCE WITH GEOTECHNICAL ENGINEER'S RECOMMENDATIONS.

**WOODSPRING SUITES DEVELOPMENT  
MILWAUKEE, WI  
GRADING PLAN**

NO.	REVISION	DATE	BY
	SITE REVISION	01-25-21	SMM

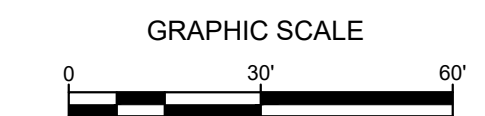
19092 GRADING PLAN.DWG  
 DRAWN BY: JRG  
 DATE: 07-29-2020  
 PROJECT NO: 19092  
 CHECKED BY: SMM  
 APPROVED BY: JBL  
 SHEET NO.:

**C200**



CALL DIGGERS HOTLINE  
 1-800-242-8511  
 TOLL FREE  
 WI STATE 182.07(5)9743  
 REQUIRES MIN. 3 WORK DAYS  
 NOTICE BEFORE YOU EXCAVATE  
 MILW. AREA 259-1181

THE UNDERGROUND UTILITY INFORMATION SHOWN ON THIS MAP IS BASED ON FIELD MARKINGS AND INFORMATION FURNISHED BY UTILITY COMPANIES AND THE LOCAL MUNICIPALITY. WHILE THIS INFORMATION IS BELIEVED TO BE RELIABLE, ITS ACCURACY AND COMPLETENESS CANNOT BE GUARANTEED.



**LEGEND:**

- W --- PROPOSED WATER SERVICE
- SAN --- PROPOSED SANITARY SERVICE
- S --- PROPOSED STORM SEWER
- E --- PROPOSED ELECTRICAL SERVICE
- T --- PROPOSED TELEPHONE SERVICE
- G --- PROPOSED GAS SERVICE
- PROPOSED STORM INLET (X C401)
- PROPOSED STORM MANHOLE (X C401)
- PROPOSED SANITARY MANHOLE (X C401)

**GENERAL NOTES:**

1. THE UNDERGROUND UTILITY INFORMATION SHOWN ON THIS DRAWING IS BASED ON FIELD LOCATIONS AND/OR RECORDS FURNISHED BY MUNICIPALITIES AND UTILITY COMPANIES. THE LOCATION AND ACCURACY OF WHICH CANNOT BE GUARANTEED. THERE MAY BE ADDITIONAL UNDERGROUND UTILITY INSTALLATIONS WITHIN THE PROJECT AREA THAT ARE NOT SHOWN.
2. VERIFY ACTUAL LOCATIONS AND INVERTS IN THE FIELD. ANY POTENTIAL ERRORS, OMISSIONS, OR DISCREPANCIES SHALL BE BROUGHT TO THE ATTENTION OF THE ENGINEER PRIOR TO PROCEEDING WITH CONSTRUCTION.
3. WORK TO BE COMPLETED IS INDICATED IN BOLD TYPE LINES AND EXISTING CONDITIONS ARE INDICATED BY LIGHT TYPE LINES.
4. ELECTRONIC CIVIL FILES ARE AVAILABLE UPON WRITTEN REQUEST. DO NOT USE ELECTRONIC CIVIL FILES TO LAYOUT FOUNDATIONS, COLUMN LINES, LIGHT POLES, OR OTHER NON CIVIL SITE WORK. REFER TO ARCHITECTURAL DRAWINGS FOR DIMENSIONS OF BUILDING AND ARCHITECTURAL FEATURES.
5. ALL UTILITIES WITHIN 5 FEET OF PAVED AREAS SHALL REQUIRE GRANULAR BACKFILL. SLURRY BACKFILL IS REQUIRED FOR ALL WORK IN PUBLIC RIGHT OF WAY.
6. PRIVATE STORM INLETS IN PAVEMENT SHALL REQUIRE DRAIN TILE STUBS OF 10 FEET IN TWO DIRECTIONS FOR SUBDRAINAGE. RIM GRADE FOR STORM INLETS IN CURB AND GUTTER ARE FLOW LINE GRADES.
7. WORK IN PUBLIC RIGHT OF WAY SHALL FOLLOW MATERIAL AND INSTALLATION REQUIREMENTS PER MUNICIPAL AND/OR COUNTY.
8. PRIVATE STORM SEWER 12-INCH DIAMETER OR LARGER SHALL BE HDPE. BELOW 12-INCH DIAMETER SHALL BE PVC SDR-35 ASTM D3034. PRIVATE WATER MAIN SHALL BE CLASS 150 DR 18 PVC CONFORMING TO AWWA C-900. PRIVATE SANITARY SEWER SHALL BE PVC SDR-35 ASTM D3034.
9. COORDINATE FINAL LOCATION AND DESIGN OF PRIVATE UTILITY SERVICES (ELECTRIC, GAS, PHONE, CABLE) WITH UTILITY COMPANIES.
10. SOILS AT THE SITE SHALL BE MANAGED IN ACCORDANCE WITH THE APPROVED SITE INVESTIGATION THE REMEDIAL ACTION PLAN.
11. WATER SERVICE INSTALLATION SHALL BE IN ACCORDANCE WITH THE MILWAUKEE WATER WORKS WATER SERVICE PIPING SPECIFICATION.

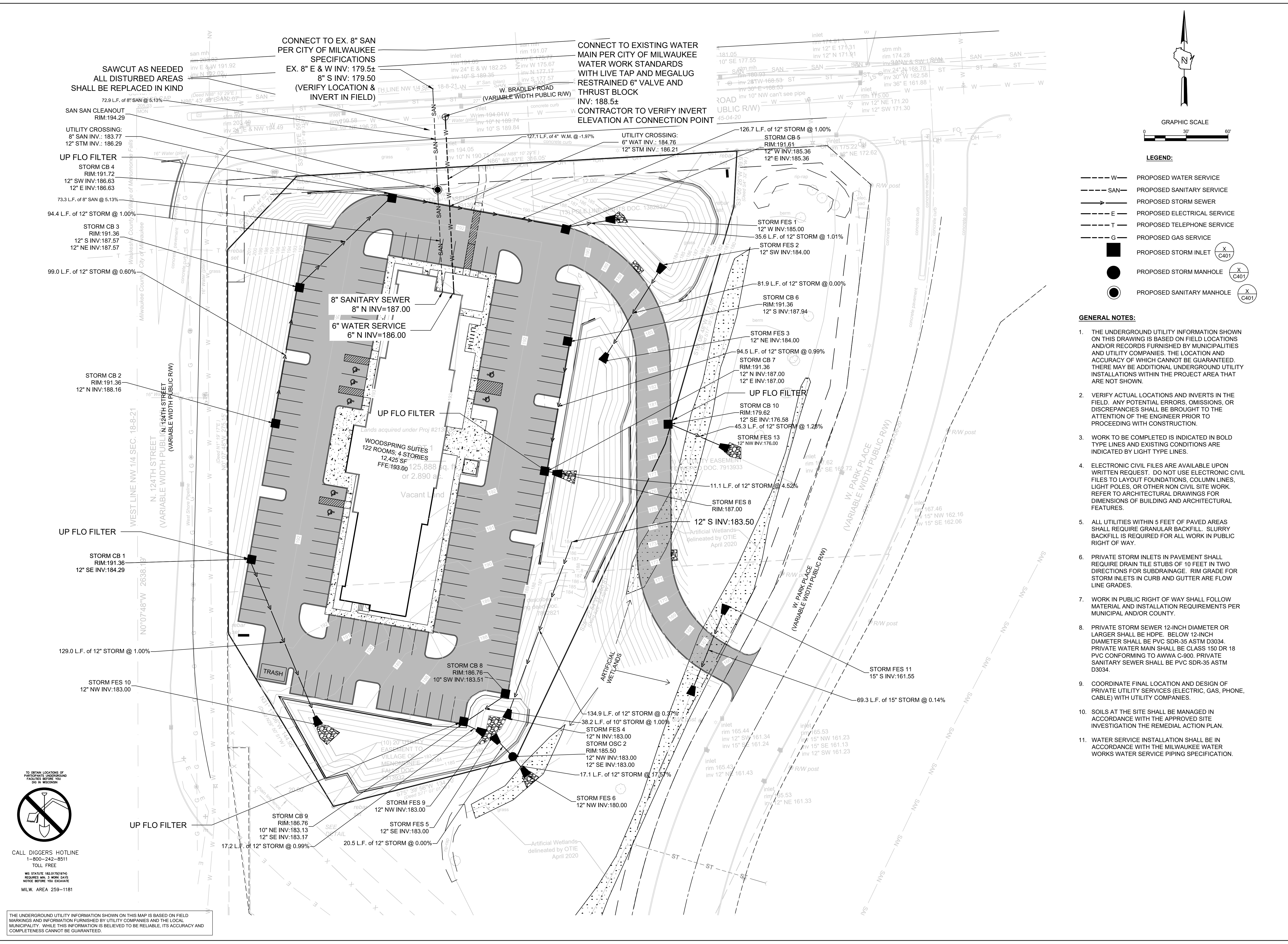
**WOODSPRING SUITES DEVELOPMENT  
MILWAUKEE, WI**

**UTILITY PLAN**

NO.	REVISION	DATE	BY
1	SITE REVISION	01-25-21	SMM

19092 UTILITY PLAN.DWG		
DRAWN BY:	JRG	
DATE:	07-29-2020	
PROJECT NO:	19092	
CHECKED BY:	SMM	
APPROVED BY:	JBL	
SHEET NO.:		

**C300**

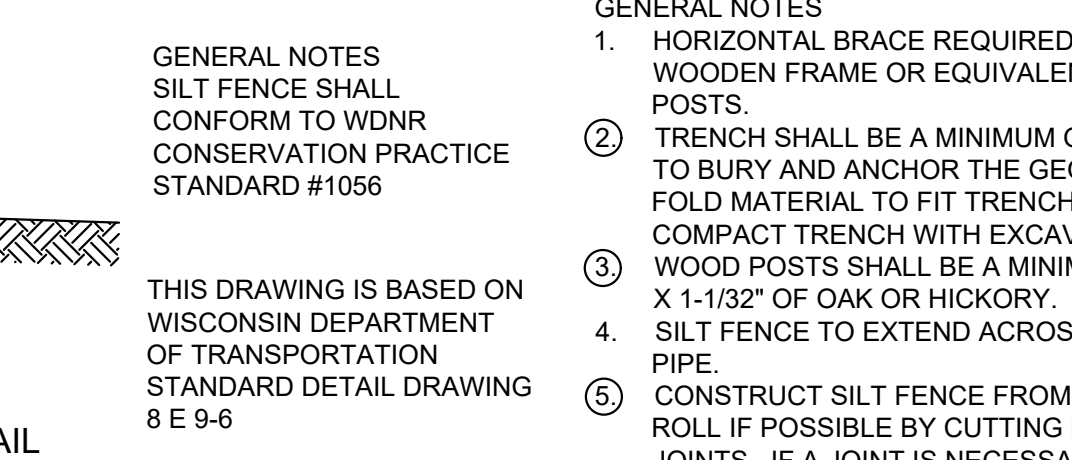
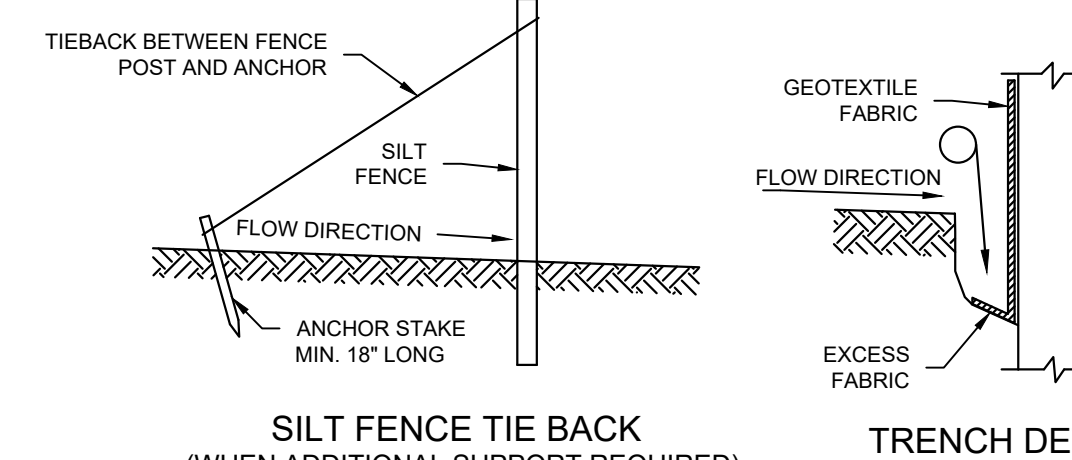
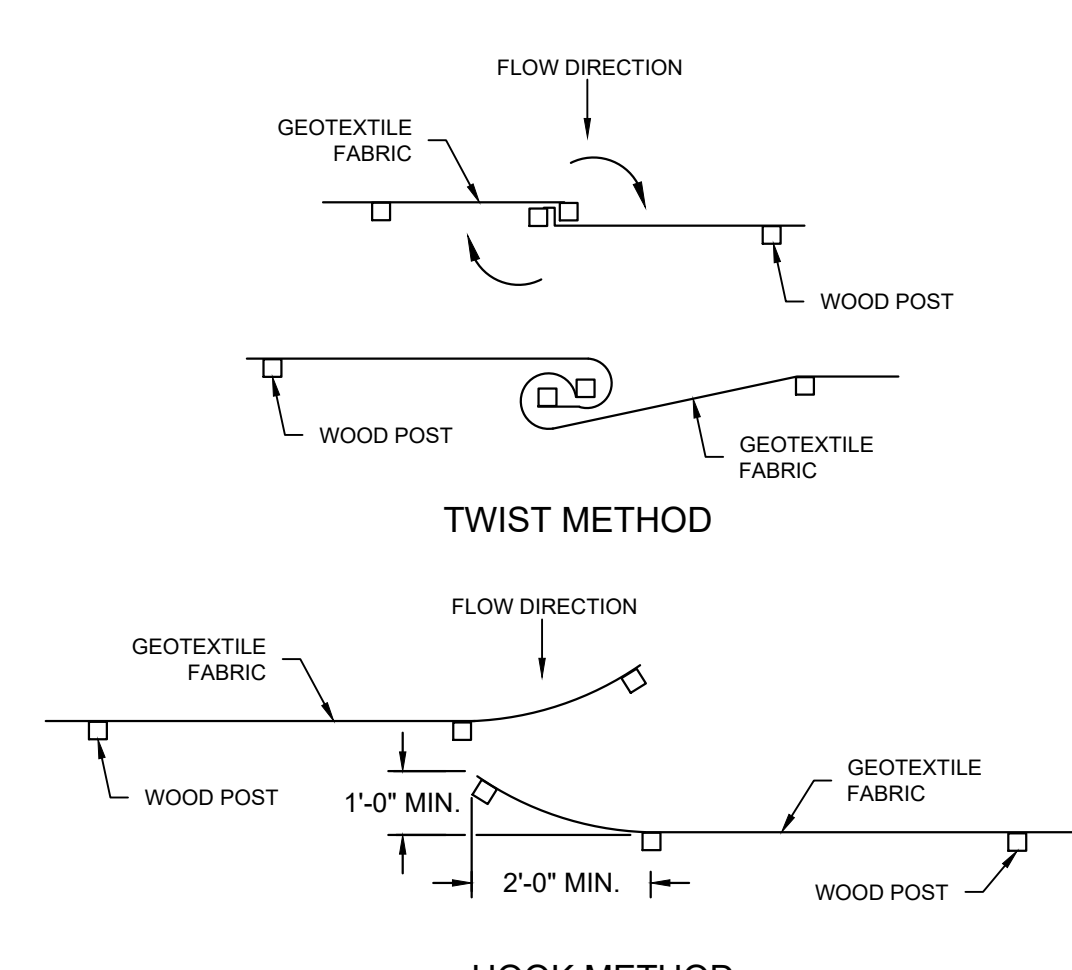
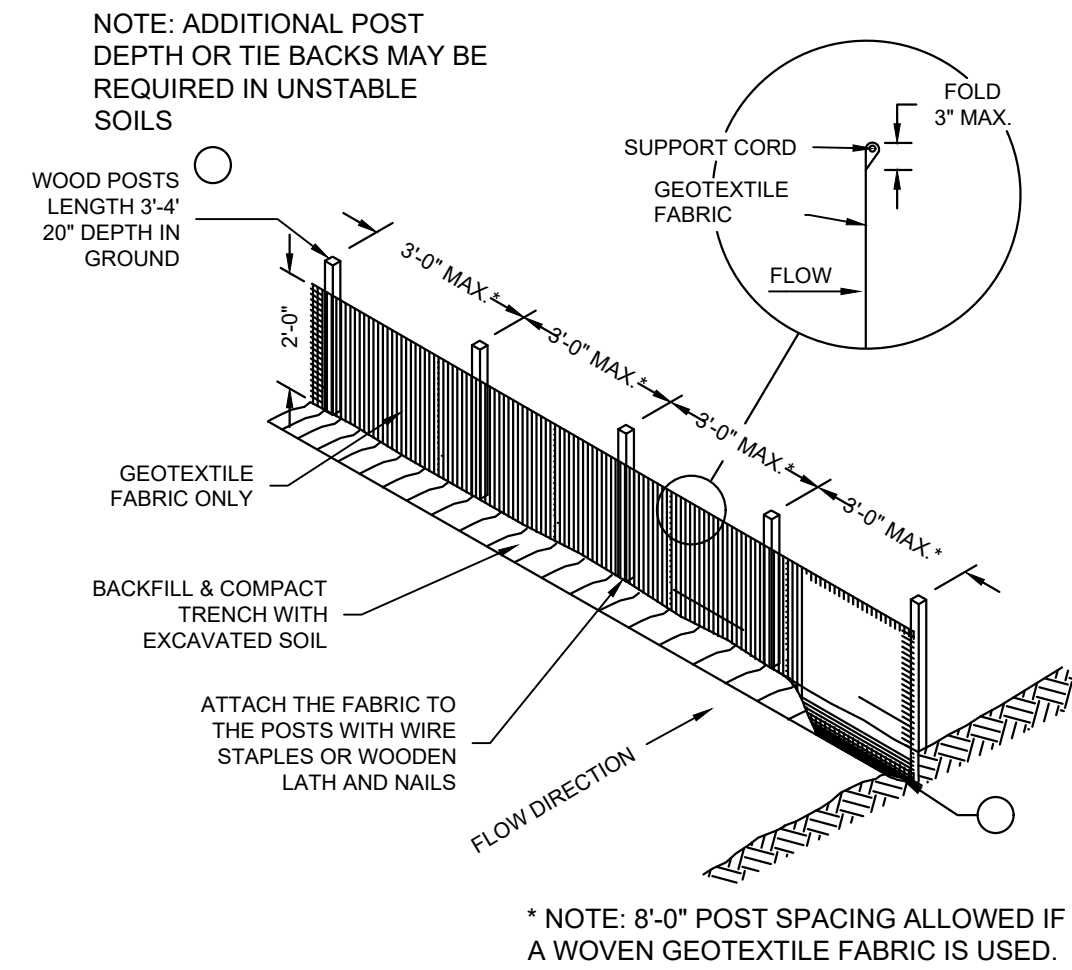


**TO OBTAIN LOCATIONS OF PARTISAN RECORDS FACILITIES BEFORE YOU DIG IN RECORD**

**CALL DIGGERS HOTLINE**  
 1-800-242-8511  
 TOLL FREE

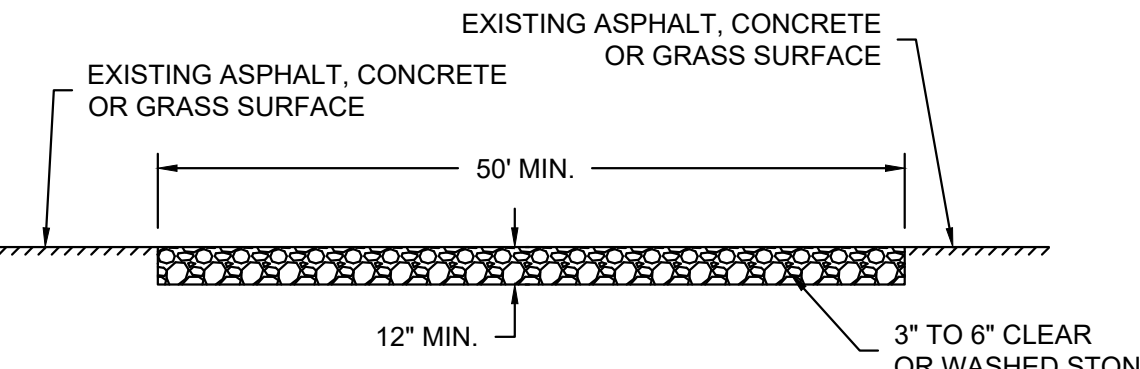
WI STATUTE 182.07(5)(b) REQUIRES 3 WORK DAYS NOTICE BEFORE YOU EXCAVATE  
 MILW. AREA 259-1181

THE UNDERGROUND UTILITY INFORMATION SHOWN ON THIS MAP IS BASED ON FIELD MARKINGS AND INFORMATION FURNISHED BY UTILITY COMPANIES AND THE LOCAL MUNICIPALITY. WHILE THIS INFORMATION IS BELIEVED TO BE RELIABLE, ITS ACCURACY AND COMPLETENESS CANNOT BE GUARANTEED.



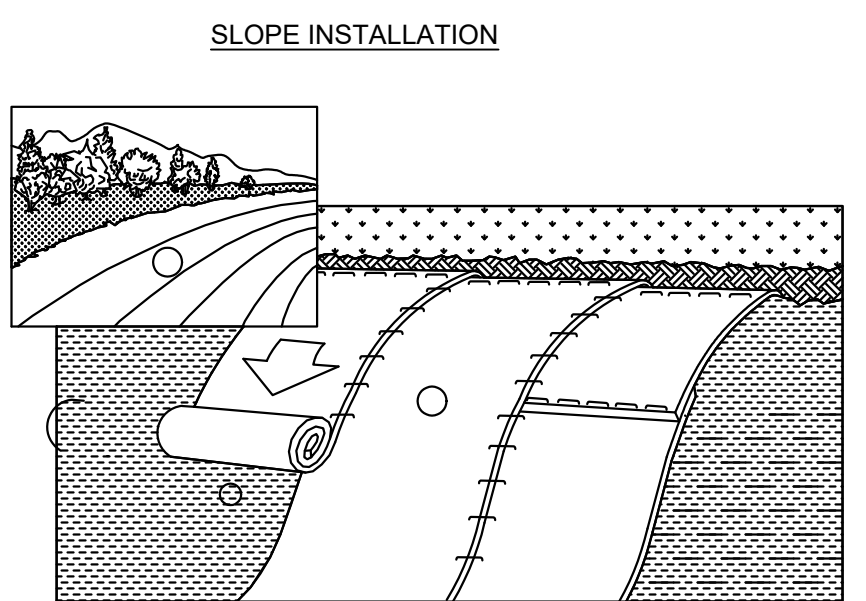
**A SILT FENCE: WDNR TS-1056**  
NOT TO SCALE

- GENERAL NOTES
- HORIZONTAL BRACE REQUIRED WITH 2"x4" WOODEN FRAME OR EQUIVALENT AT TOP OF POSTS.
  - TRENCH SHALL BE A MINIMUM OF 4" WIDE & 6" DEEP TO BURY AND ANCHOR THE GEOTEXTILE FABRIC. FOLD MATERIAL TO FIT TRENCH AND BACKFILL & COMPACT TRENCH WITH EXCAVATED SOIL.
  - WOOD POSTS SHALL BE A MINIMUM SIZE OF 1-1/32" X 1-1/32" OF OAK OR HICKORY.
  - SILT FENCE TO EXTEND ACROSS THE TOP OF THE PIPE.
  - CONSTRUCT SILT FENCE FROM A CONTINUOUS ROLL IF POSSIBLE BY CUTTING LENGTHS TO AVOID JOINTS. IF A JOINT IS NECESSARY USE ON THE FOLLOWING TWO METHODS: A) OVERLAP THE END POSTS AND TWIST OR ROTATE, AT LEAST 180 DEGREES. B) HOOK THE END OF EACH SILT FENCE LENGTHS.
- THIS DRAWING IS BASED ON WISCONSIN DEPARTMENT OF TRANSPORTATION STANDARD DETAIL DRAWING 8 E 9-6



GENERAL NOTE:  
STONE TRACKING PAD SHALL CONFORM TO WDNR CONSERVATION PRACTICE STANDARD #1057

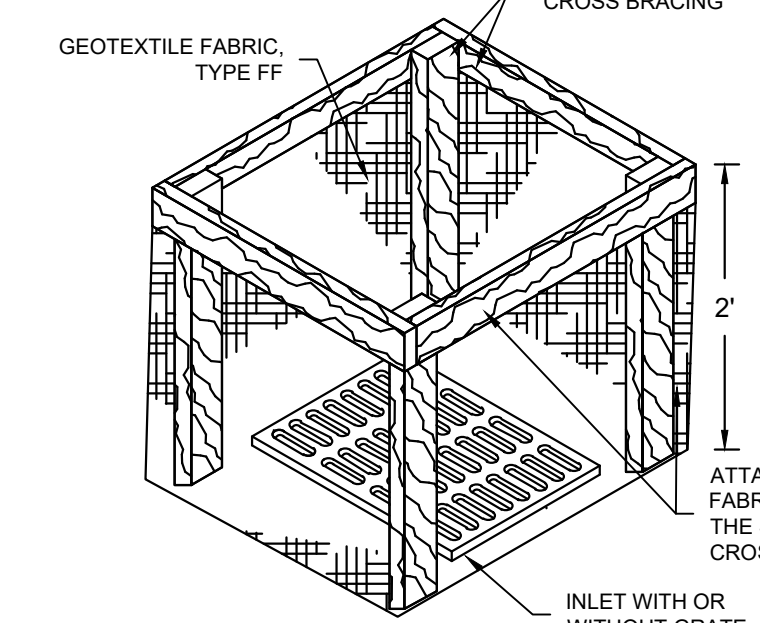
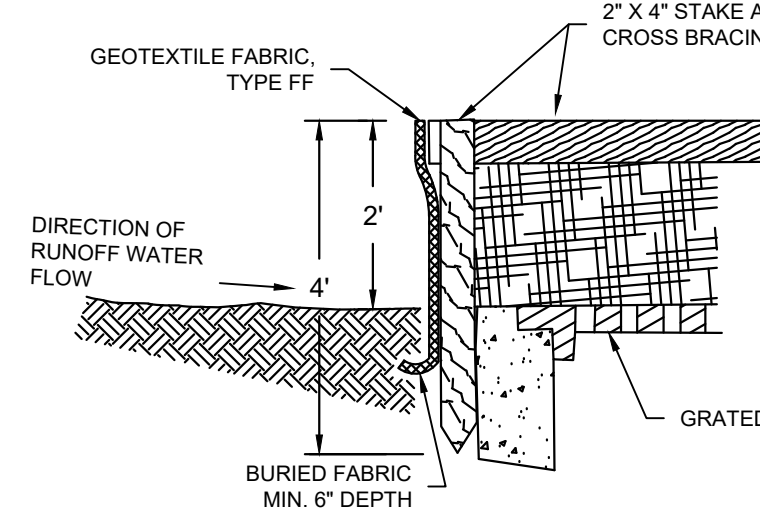
**C CONSTRUCTION ENTRANCE/ EXIT DETAIL: WDNR TS-1057**  
NOT TO SCALE



- ECRMs (EROSION CONTROL REVEGETATIVE MATS) SHALL BE INSTALLED AFTER ALL TOPSOILING, FERTILIZING, LIMING, AND SEEDING IS COMPLETE.
- THE MAT SHALL BE IN FIRM AND INTIMATE CONTACT WITH THE SOIL. IT SHALL BE INSTALLED AND ANCHORED PER THE MANUFACTURER'S RECOMMENDATION.
- TRMs (TURF-REINFORCEMENT MAT) SHALL BE INSTALLED IN CONJUNCTION WITH THE TOPSOILING OPERATION AND SHALL BE FOLLOWED BY ECRM INSTALLATION.
- AT TIME OF INSTALLATION, DOCUMENT THE MANUFACTURER AND MAT TYPE BY RETENTION OF MATERIAL LABELS AND MANUFACTURER'S INSTALLATION INSTRUCTIONS. RETAIN THIS DOCUMENTATION UNTIL THE SITE HAS BEEN STABILIZED.

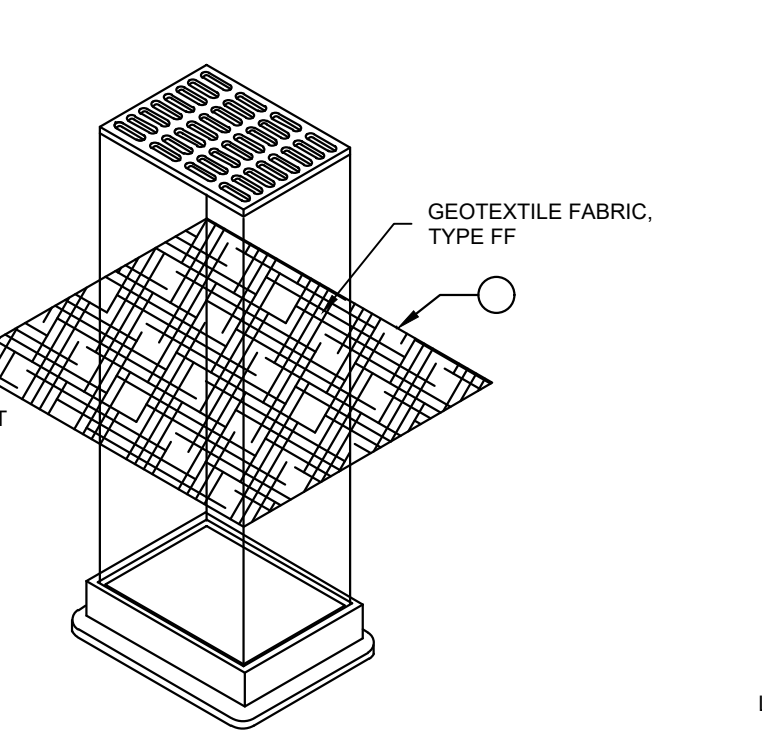
- NOTES:
- EROSION MATTING SHALL CONFORM TO WDNR CONSERVATION PRACTICE STANDARD #1052.
  - INSTALL PER MANUFACTURER'S SPECIFICATIONS.

**D EROSION MATTING: WDNR TS-1052**  
NOT TO SCALE

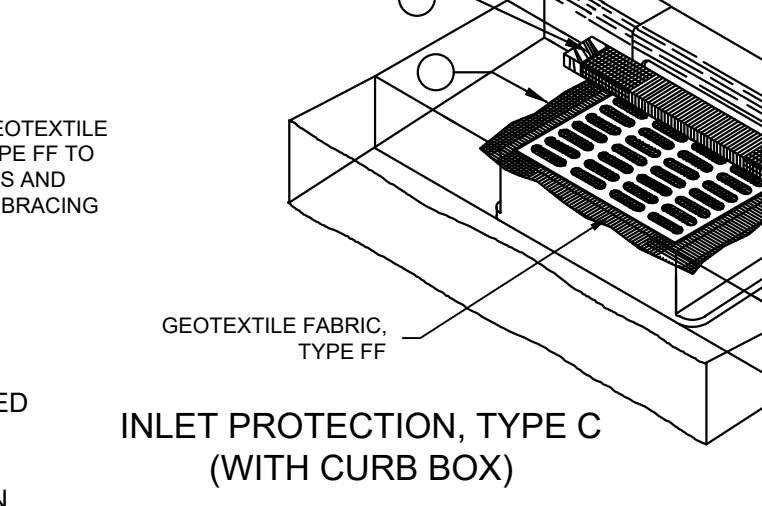


**INLET PROTECTION, TYPE A**

- GENERAL NOTES
- MANUFACTURED ALTERNATIVES APPROVED AND LISTED ON THE DEPARTMENT'S EROSION CONTROL PRODUCT ACCEPTABILITY LIST MAY BE SUBSTITUTED.
  - WHEN REMOVING OR MAINTAINING INLET PROTECTION, CARE SHALL BE TAKEN SO THAT THE SEDIMENT TRAPPED ON THE GEOTEXTILE FABRIC DOES NOT FALL INTO THE INLET. ANY MATERIAL FALLING INTO THE INLET SHALL BE REMOVED IMMEDIATELY.
  - FINISHED SIZE, INCLUDING FLAP POCKETS WHERE REQUIRED, SHALL EXTEND A MINIMUM OF 10' AROUND THE PERIMETER TO FACILITATE MAINTENANCE OR REMOVAL.
  - FOR INLET PROTECTION, TYPE C (WITH CURB BOX), AN ADDITIONAL 18" OF FABRIC IS WRAPPED AROUND THE WOOD AND SECURED WITH STAPLES. THE WOOD SHALL NOT BLOCK THE ENTIRE HEIGHT OF THE CURB BOX OPENING.
  - FLAP POCKETS SHALL BE LARGE ENOUGH TO ACCEPT WOOD 2X4.



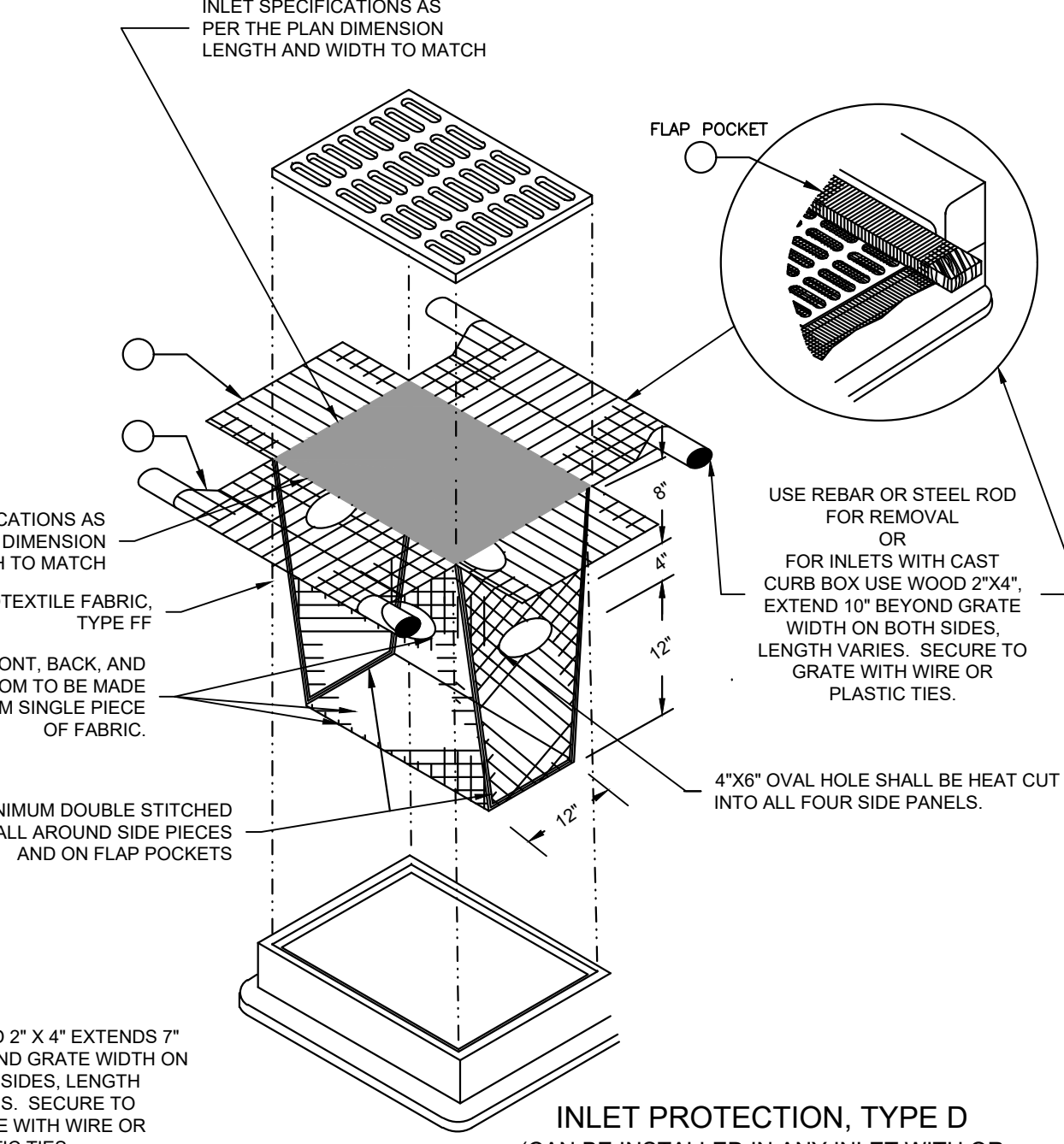
**INLET PROTECTION, TYPE C (WITH CURB BOX)**



**INLET PROTECTION, TYPE D (WITHOUT CURB BOX)**

- INSTALLATION NOTES
- TYPE B & C
- TRIM EXCESS FABRIC IN THE FLOW LINE TO WITHIN 3" OF THE GRATE. THE CONTRACTOR SHALL DEMONSTRATE A METHOD OF MAINTENANCE, USING A SEWN FLAP, HAND HOLDS OR OTHER METHOD TO PREVENT ACCUMULATED SEDIMENT FROM ENTERING THE INLET.
- TYPE D
- DO NOT INSTALL INLET PROTECTION TYPE D IN INLETS SHALLOWER THAN 30", MEASURED FROM THE BOTTOM OF THE INLET TO THE TOP OF THE GRATE. TRIM EXCESS FABRIC IN THE FLOW LINE TO WITHIN 3" OF THE GRATE. THE INSTALLED BAG SHALL HAVE A MINIMUM SIDE CLEARANCE BETWEEN THE INLET WALLS AND THE BAG, MEASURED AT THE BOTTOM OF THE OVERFLOW HOLES, OF 3". WHERE NECESSARY THE CONTRACTOR SHALL CINCH THE BAG, USING PLASTIC ZIP TIES, TO ACHIEVE THE 3" CLEARANCE. THE TIES SHALL BE PLACED AT A MAXIMUM OF 4" FROM THE BOTTOM OF THE BAG.

**B INLET PROTECTION TYPE A, B, C, AND D: WDNR TS-1060**  
NOT TO SCALE



**INLET PROTECTION, TYPE D (CAN BE INSTALLED IN ANY INLET WITH OR WITHOUT A CURB BOX AS PER NOTE)**

GENERAL NOTE:  
INLET PROTECTION SHALL CONFORM TO WDNR CONSERVATION PRACTICE STANDARD #1060

THIS DRAWING IS BASED ON WISCONSIN DEPARTMENT OF TRANSPORTATION STANDARD DETAIL DRAWING 8 E 10-2

- EROSION CONTROL NOTES:**
- CONSTRUCTION SITE EROSION CONTROL AND SEDIMENTATION CONTROL SHALL COMPLY WITH THE REQUIREMENTS OF THE LOCAL MUNICIPALITY AND SHALL EMPLOY EROSION CONTROL METHODS AS SHOWN AND SPECIFIED IN THE WISCONSIN DEPARTMENT OF NATURAL RESOURCES TECHNICAL STANDARDS.
  - ALL EROSION CONTROL MEASURES SHALL BE ADJUSTED TO MEET FIELD CONDITIONS AT THE TIME OF CONSTRUCTION AND SHALL BE INSTALLED PRIOR TO ANY GRADING OR DISTURBANCE OF EXISTING SURFACE MATERIAL ON THE SITE.
  - EROSION AND SEDIMENT CONTROL MEASURES SHALL BE CHECKED FOR STABILITY AND OPERATION AFTER A RAINFALL OF 0.5 INCHES OR MORE, BUT NO LESS THAN ONCE EVERY WEEK. MAINTENANCE OF ALL EROSION CONTROL STRUCTURES SHALL BE PROVIDED TO INSURE INTENDED PURPOSE IS ACCOMPLISHED. CONTRACTOR SHALL BE RESPONSIBLE FOR CLEANUP AND REMOVAL OF ALL SEDIMENT WHEN LEAVING PROPERTY. EROSION CONTROL MEASURES MUST BE IN WORKING CONDITION AT END OF EACH WORK DAY. DOCUMENT AND MAINTAIN RECORDS OF INSPECTIONS IN ACCORDANCE WITH WDNR NR216 REQUIREMENTS.
  - SILT FENCE SHALL BE INSTALLED IN THE LOCATIONS SHOWN ON THE CONSTRUCTION PLANS. SEDIMENT DEPOSITS SHALL BE REMOVED FROM BEHIND THE SILT FENCE WHEN DEPOSITS REACH A DEPTH OF 6 INCHES. THE SILT FENCE SHALL BE REPAIRED OR REPLACED AS NECESSARY TO MAINTAIN A BARRIER.
  - FILTER FABRIC SHALL BE INSTALLED BENEATH INLET COVERS TO TRAP SEDIMENT PER INLET PROTECTION DETAIL IN THE LOCATIONS SHOWN ON THE CONSTRUCTION PLANS.
  - EROSION CONTROL MEASURES SHALL BE MAINTAINED ON A CONTINUING BASIS UNTIL SITE IS FULLY STABILIZED.
  - PERIODIC STREET SWEEPING SHALL BE COMPLETED TO MAINTAIN ADJACENT STREETS FREE OF DUST AND DIRT.
  - SILT FENCE SHALL BE INSTALLED IN HORSESHOE FASHION AROUND ANY TOPSOIL AND FILL STOCKPILES.
  - SITE DEWATERING. WATER PUMPED FROM THE SITE SHALL BE TREATED BY SEDIMENT BASINS OR OTHER APPROPRIATE MEASURES SPECIFIED IN THE WISCONSIN DEPARTMENT OF NATURAL RESOURCES TECHNICAL STANDARDS. WATER MAY NOT BE DISCHARGED IN A MANNER THAT CAUSES EROSION OF THE SITE, ADJACENT SITES, OR RECEIVING CHANNELS.
  - WASTE AND MATERIAL DISPOSAL. ALL WASTE AND UNUSED BUILDING MATERIALS (INCLUDING GARBAGE, DEBRIS, CLEANING WASTES, WASTEWATER, TOXIC MATERIALS, OR HAZARDOUS MATERIALS) SHALL BE PROPERLY DISPOSED AND NOT ALLOWED TO BE CARRIED OFF-SITE BY RUNOFF OR WIND.
  - TRACKING. EACH SITE SHALL HAVE GRAVELED ROADS, ACCESS DRIVES AND PARKING AREAS OF SUFFICIENT WIDTH AND LENGTH TO PREVENT SEDIMENT FROM BEING TRACKED ONTO PUBLIC OR PRIVATE ROADWAYS. ANY SEDIMENT REACHING A PUBLIC OR PRIVATE ROAD SHALL BE REMOVED BY STREET CLEANING, TO THE SATISFACTION OF THE MUNICIPALITY, BEFORE THE END OF EACH WORKDAY. FLUSHING MAY NOT BE USED UNLESS SEDIMENT WILL BE CONTROLLED BY A SEDIMENT BASIN OR PRACTICE SPECIFIED IN THE WISCONSIN DEPARTMENT OF NATURAL RESOURCES TECHNICAL STANDARDS. NOTIFY MUNICIPALITY OF ANY CHANGES IN STABILIZED CONSTRUCTION ENTRANCE LOCATION.
  - SEDIMENT CLEANUP. ALL OFF-SITE SEDIMENT DEPOSITS OCCURRING AS A RESULT OF A STORM EVENT SHALL BE CLEANED UP BY THE END OF THE NEXT WORKDAY. ALL OTHER OFF-SITE SEDIMENT DEPOSITS OCCURRING AS A RESULT OF CONSTRUCTION ACTIVITIES SHALL BE CLEANED UP BY THE END OF THE WORKDAY.
  - ALL DISTURBED GROUND LEFT INACTIVE FOR SEVEN OR MORE DAYS SHALL BE STABILIZED BY TEMPORARY OR PERMANENT SEEDING, MULCHING, SODDING, COVERING WITH TARPS, OR EQUIVALENT PRACTICE FOUND IN THE WISCONSIN DEPARTMENT OF NATURAL RESOURCES TECHNICAL STANDARD. IF TEMPORARY SEEDING IS USED, A PERMANENT COVER SHALL ALSO BE REQUIRED AS PART OF THE FINAL SITE STABILIZATION. SEEDING OR SODDING SHALL BE REQUIRED AS PART OF THE FINAL SITE STABILIZATION.
  - SOIL OR DIRT STORAGE PILES SHALL BE LOCATED A MINIMUM OF TWENTY-FIVE FEET FROM ANY DOWNSLOPE ROAD, LAKE, STREAM, WETLAND, OR DRAINAGE CHANNEL. STRAW BALE OR FILTER FABRIC FENCES SHALL BE PLACED ON THE DOWN SLOPE SIDE OF THE PILES. IF REMAINING FOR MORE THAN THIRTY DAYS, PILES SHALL BE STABILIZED BY MULCHING, VEGETATIVE COVER, TARPS OR OTHER MEANS.
  - WHEN THE DISTURBED AREA HAS BEEN STABILIZED BY PERMANENT VEGETATION OR OTHER MEANS, TEMPORARY PRACTICES, SUCH AS FILTER FABRIC FENCES, STRAW BALES, SEDIMENT AND SEDIMENT TRAPS, FOUND IN THE WISCONSIN DEPARTMENT OF NATURAL RESOURCES TECHNICAL STANDARDS SHALL BE REMOVED.
  - NOTIFY THE LOCAL MUNICIPALITY HAVING JURISDICTION WITHIN TWO WORKING DAYS OF COMMENCING ANY LAND DEVELOPMENT OR LAND DISTURBING ACTIVITY.
  - OBTAIN PERMISSION FROM THE LOCAL MUNICIPALITY HAVING JURISDICTION PRIOR TO MODIFYING THE EROSION CONTROL PLAN.
  - REPAIR ANY SILTATION OR EROSION DAMAGE TO ADJOINING SURFACES AND DRAINAGE WAYS RESULTING FROM LAND DEVELOPMENT OR LAND DISTURBING ACTIVITIES.
  - KEEP A COPY OF THE EROSION CONTROL PLAN ON SITE.
  - CONTRACTOR SHALL TO THE EXTENT POSSIBLE, MINIMIZE DISTURBANCE OF EXISTING VEGETATION DURING CONSTRUCTION.
  - CONTRACTOR SHALL TO THE EXTENT POSSIBLE, MINIMIZE COMPACTION OF TOPSOIL AND PRESERVE TOPSOIL IN GREENSPACE AREAS.
  - WASH WATER FROM VEHICLES AND WHEEL WASHING SHALL BE CONTAINED AND TREATED PRIOR TO DISCHARGE.
  - CONTRACTOR SHALL MAINTAIN SPILL KITS ON-SITE.
  - PERMANENT TURF SEEDING OF DISTURBED AREA MUST OCCUR PRIOR TO SEPTEMBER 15TH. IF ADEQUATE TIME IS NOT AVAILABLE TO APPLY PERMANENT SEEDING PRIOR TO SEPTEMBER 15TH, THEN DISTURBED AREAS SHALL BE TEMPORARILY SEEDED WITH AN ANNUAL RYE GRASS PER WDNR TECHNICAL STANDARD 1059, WHERE THE TEMPORARY SEEDING MUST OCCUR PRIOR TO OCTOBER 15TH.
  - IF TEMPORARY SEEDING IS NOT COMPLETED BY OCTOBER 15TH, APPLY SOIL STABILIZERS AND DORMANT SEED TO DISTURBED AREA PER WDNR TECHNICAL STANDARD 1050. INSPECT ANIONIC PAM APPLICATION AT A MINIMUM FREQUENCY OF EVERY TWO MONTHS AND REAPPLY AS NECESSARY.

**CONSTRUCTION SEQUENCE FOR EROSION CONTROL INCLUDES:**

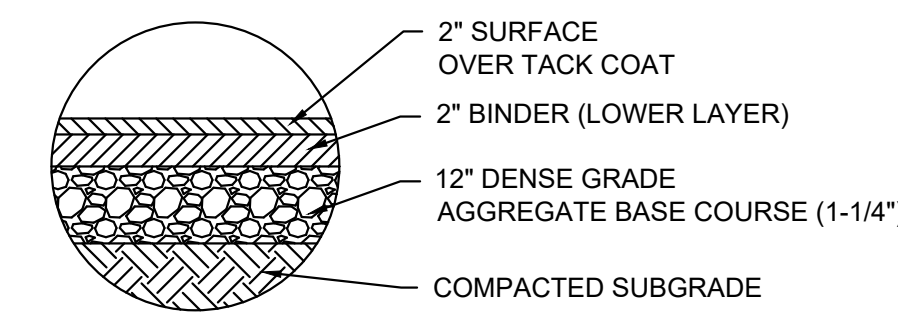
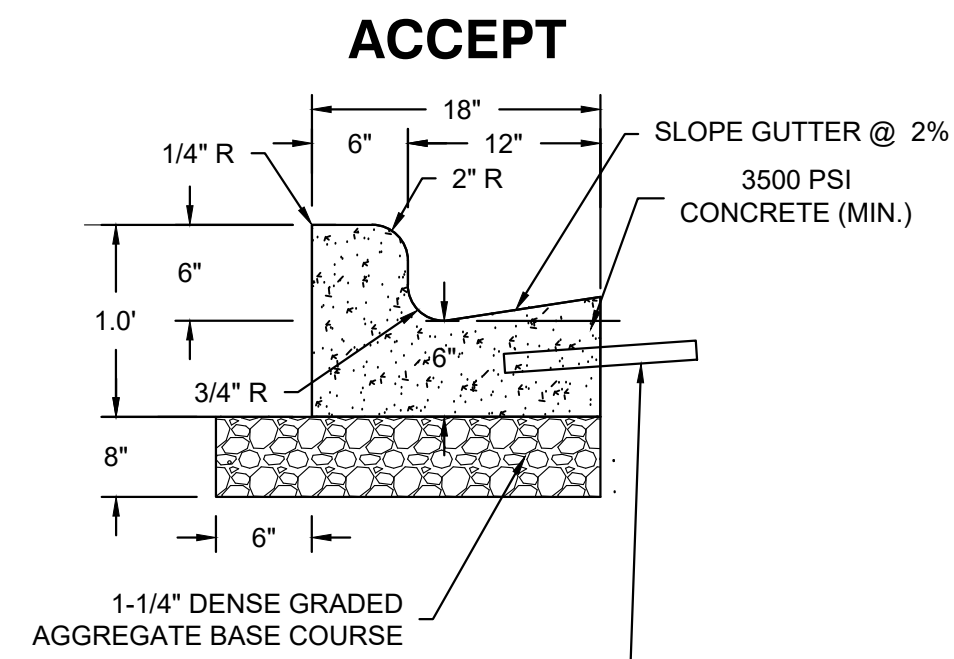
- INSTALL STABILIZED CONSTRUCTION ENTRANCE.
- INSTALL SILT FENCING AND INLET PROTECTION.
- INITIATE STOCKPILING OF IMPORTED MATERIAL. PLACE SILT FENCE AROUND STOCKPILE(S).
- STRIP TOPSOIL FROM STORM WATER BASIN LOCATION AND STOCKPILE.
- CONSTRUCT STORM WATER BASIN AND INSTALL TEMPORARY OUTLET AND EMERGENCY OVERFLOW. BASIN IS TO BE USED AS A SEDIMENTATION BASIN DURING THE COURSE OF CONSTRUCTION.
- CONSTRUCT DIVERSION SWALES, DIRECT RUNOFF TO STORM BASIN. INSTALL ASSOCIATED DITCH CHECKS.
- INSTALL RIP-RAP AT STORM WATER BASIN AS SHOWN ON THE PLANS.
- STRIP TOPSOIL FROM REMAINDER OF SITE IN A PROGRESSIVE MANNER, AND STOCKPILE.
- PERFORM ROUGH SITE GRADING. STABILIZE FINISHED AREAS AS THE WORK PROGRESSES. USE EROSION MATTING WHERE CALLED FOR ON THE PLANS. PER WDNR TECHNICAL STANDARD 1059: AREAS THAT RECEIVE TEMPORARY SEEDING SHALL HAVE A MINIMUM TOPSOIL DEPTH OF 2 INCHES. AREAS THAT RECEIVE PERMANENT SEEDING SHALL HAVE A MINIMAL TOPSOIL DEPTH OF 4 INCHES.
- PREPARE BUILDING PAD AND BEGIN FOUNDATIONS WORK FOR BUILDING.
- INSTALL UTILITIES. INSTALL ANY ADDITIONAL INLET PROTECTION ON NEW STORM SEWER AND INSTALL RIP-RAP AT NEW STORM SEWER OUTFALLS.
- REMOVE TEMPORARY OUTLET CONTROL STRUCTURE ON BASIN AND INSTALL PAVEMENTS.
- STABILIZE REMAINING AREAS WITHIN 7 DAYS OF COMPLETION OF FINAL GRADING AND TOPSOILING.
- REMOVE EXCESS SEDIMENT FROM STORMWATER BASINS AND RETURN BASINS TO THEIR DESIGN DIMENSIONS AND VOLUMES.
- REMOVE EROSION CONTROL MEASURES ONLY WHEN SITE IS FULLY STABILIZED.

WOODSPRING SUITES DEVELOPMENT  
MILWAUKEE, WI

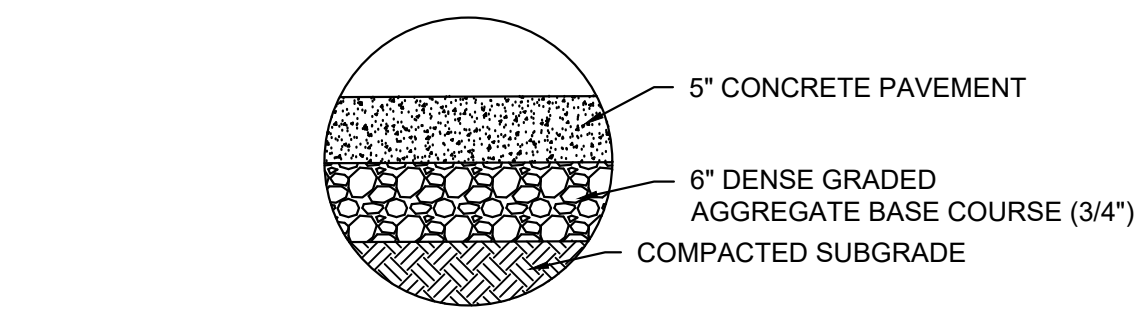
EROSION CONTROL DETAILS

NO. REVISION	DATE	BY
SITE REVISION	01-25-21	SMM
19092 DETAILS.DWG		
DRAWN BY:	JRG	
DATE:	07-29-2020	
PROJECT NO:	19092	
CHECKED BY:	SMM	
APPROVED BY:	JBL	
SHEET NO.:		

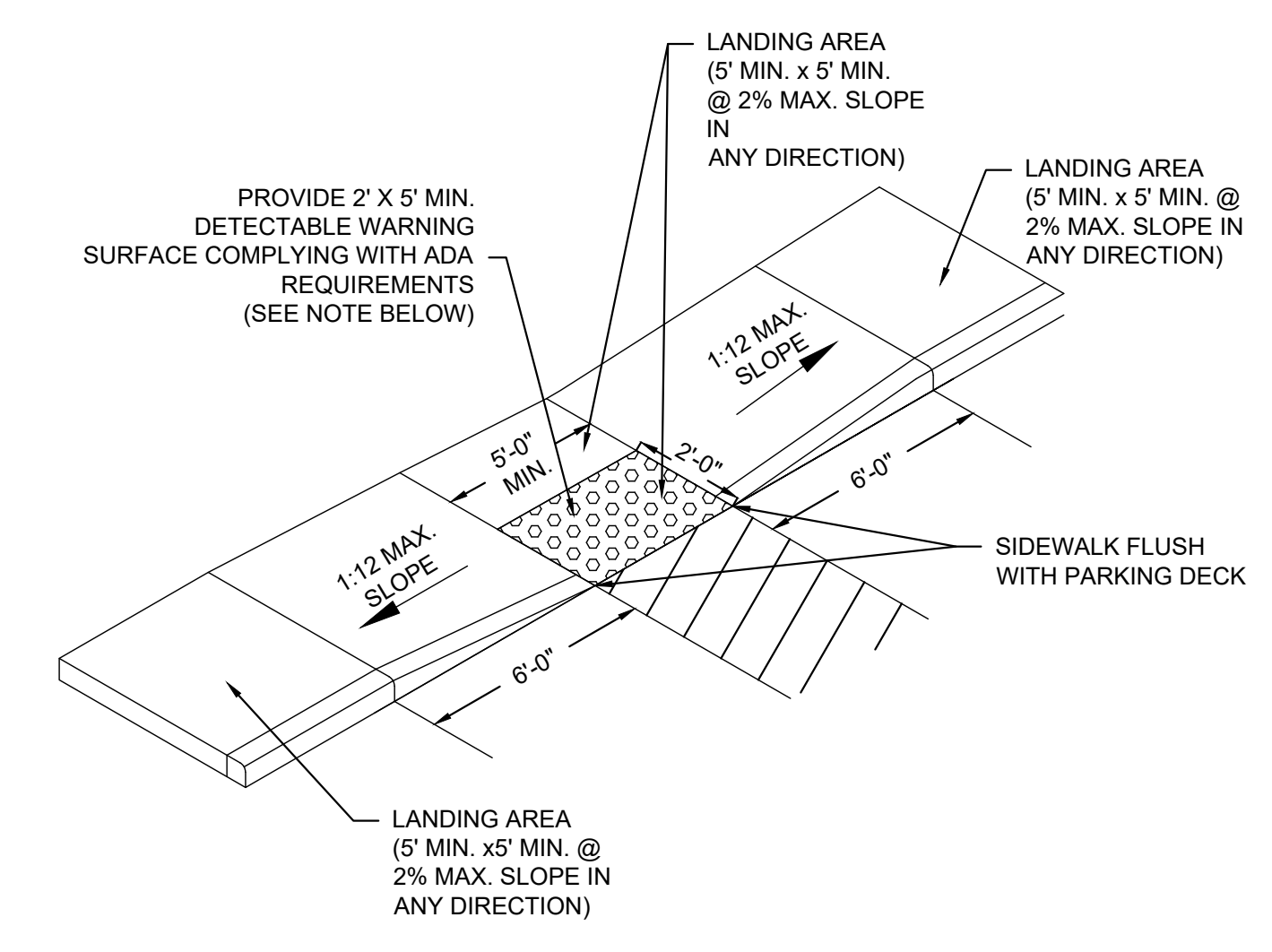
C400



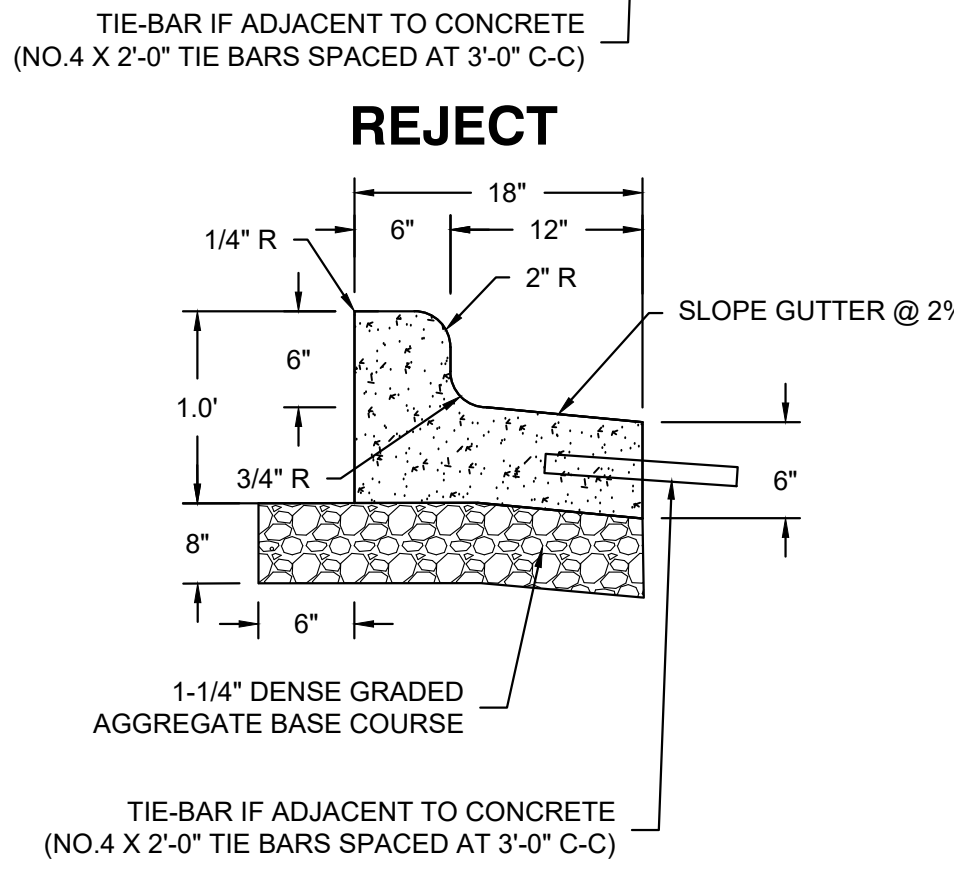
**B ASPHALT PAVEMENT SECTION**  
NOT TO SCALE



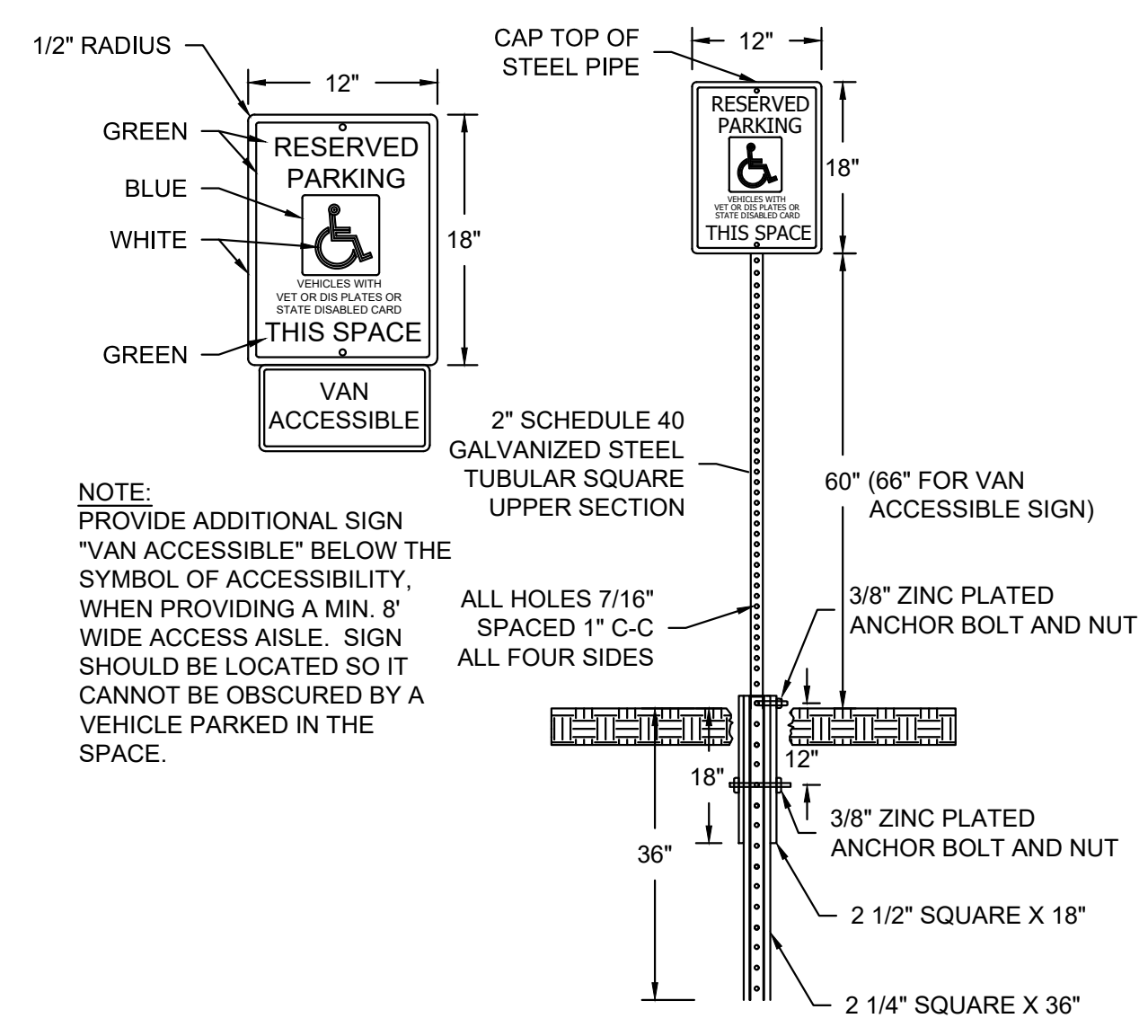
**C CONCRETE SIDEWALK SECTION**  
NOT TO SCALE



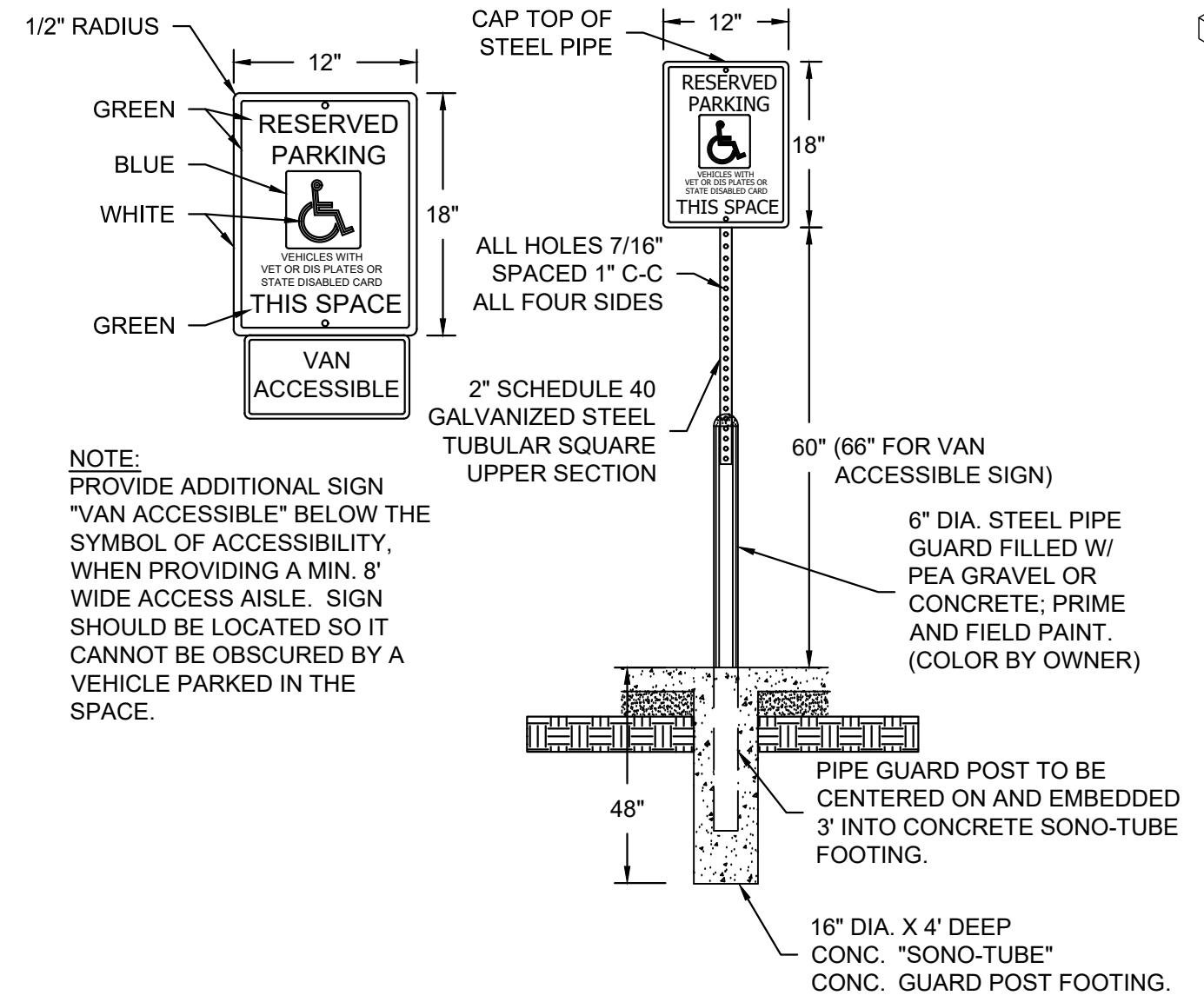
**D ADA RAMP DETAIL (TYPE 1)**  
NOT TO SCALE



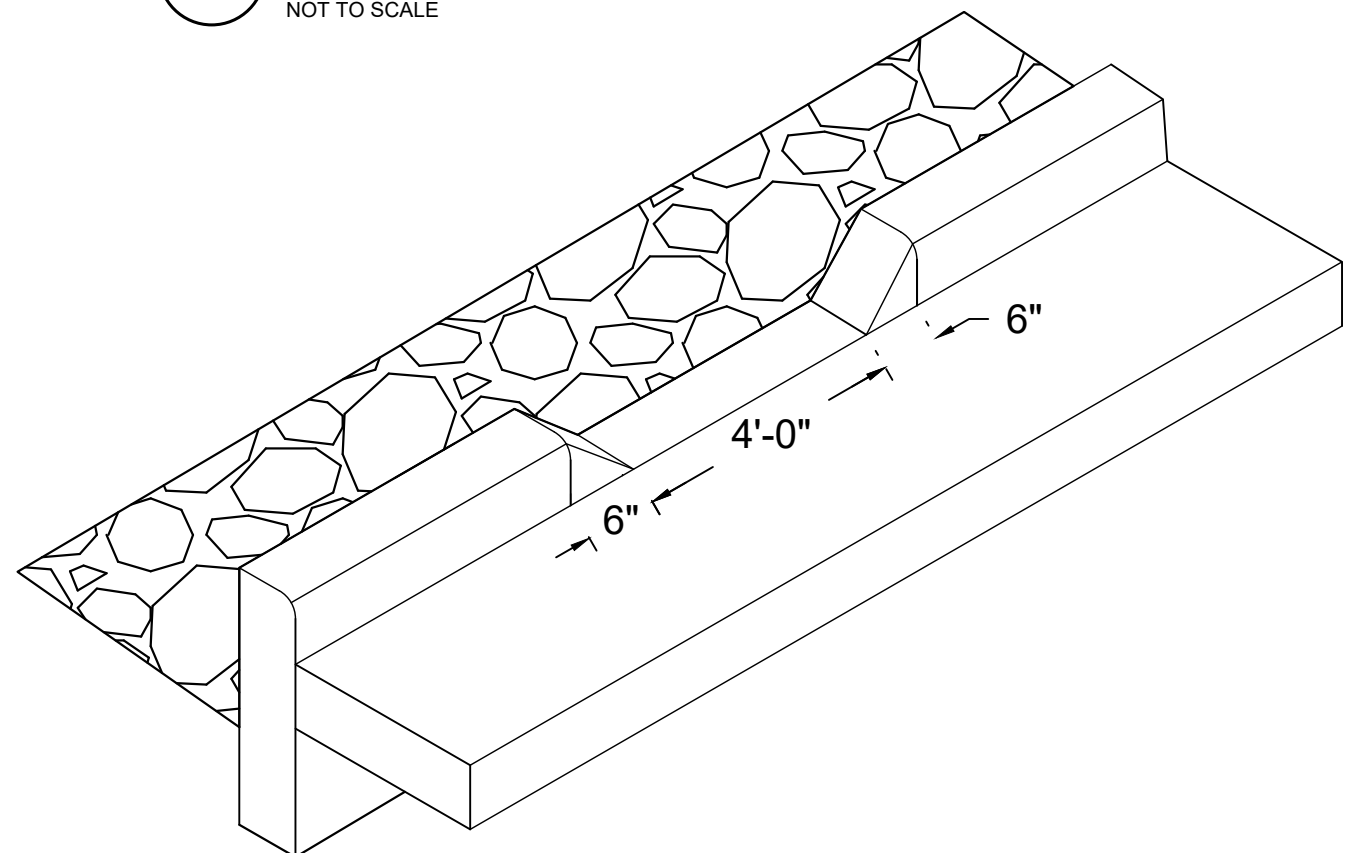
**A 18\"/>**



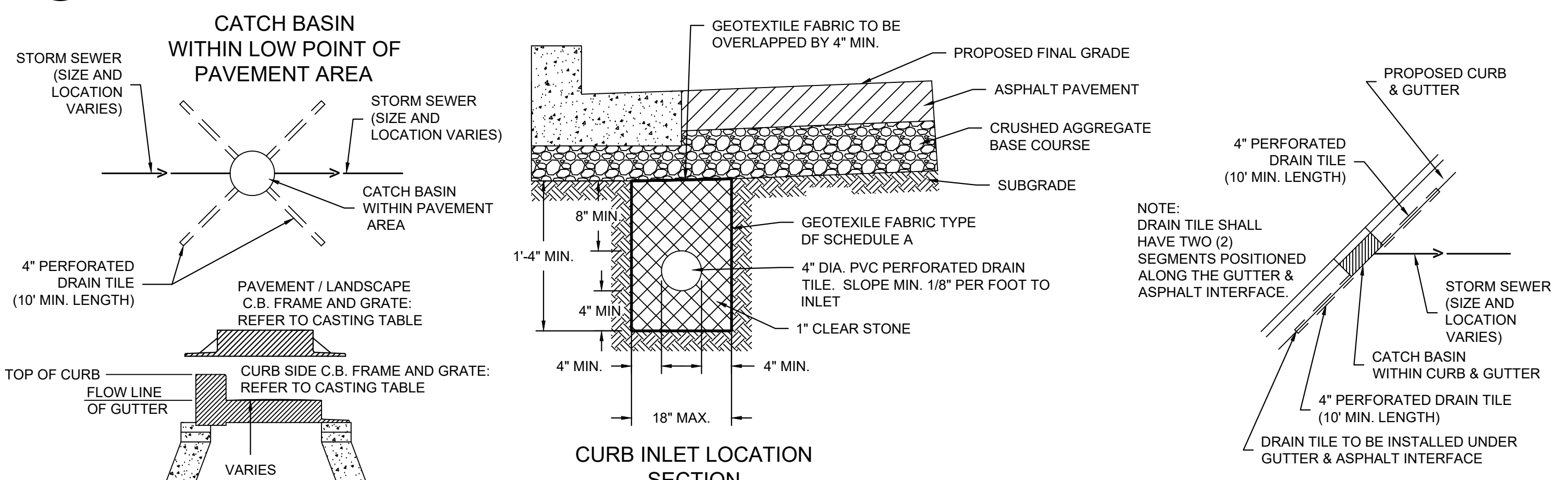
**E HANDICAP SIGN & POST**  
NOT TO SCALE



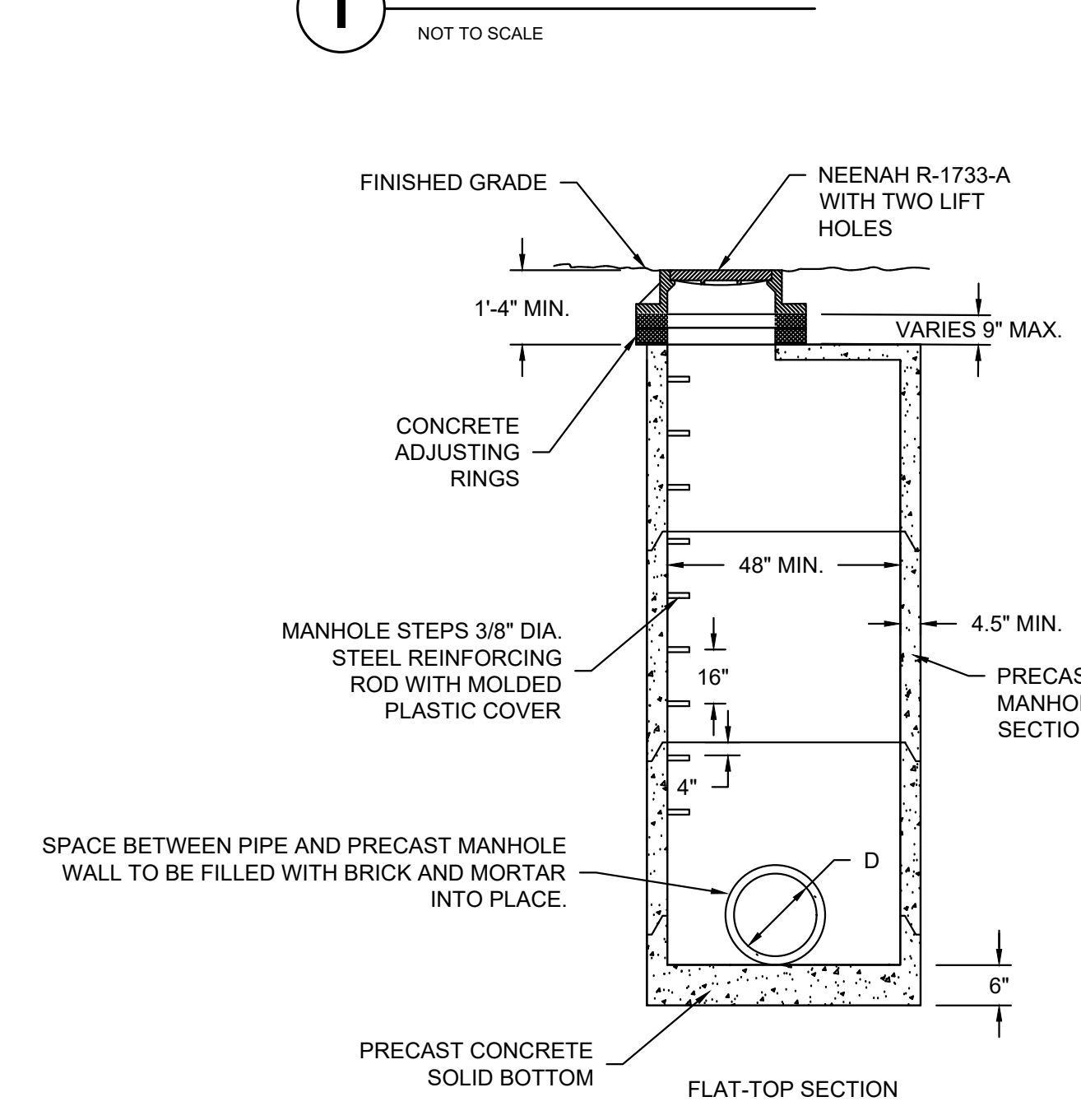
**F HANDICAP SIGN & BOLLARD POST**  
NOT TO SCALE



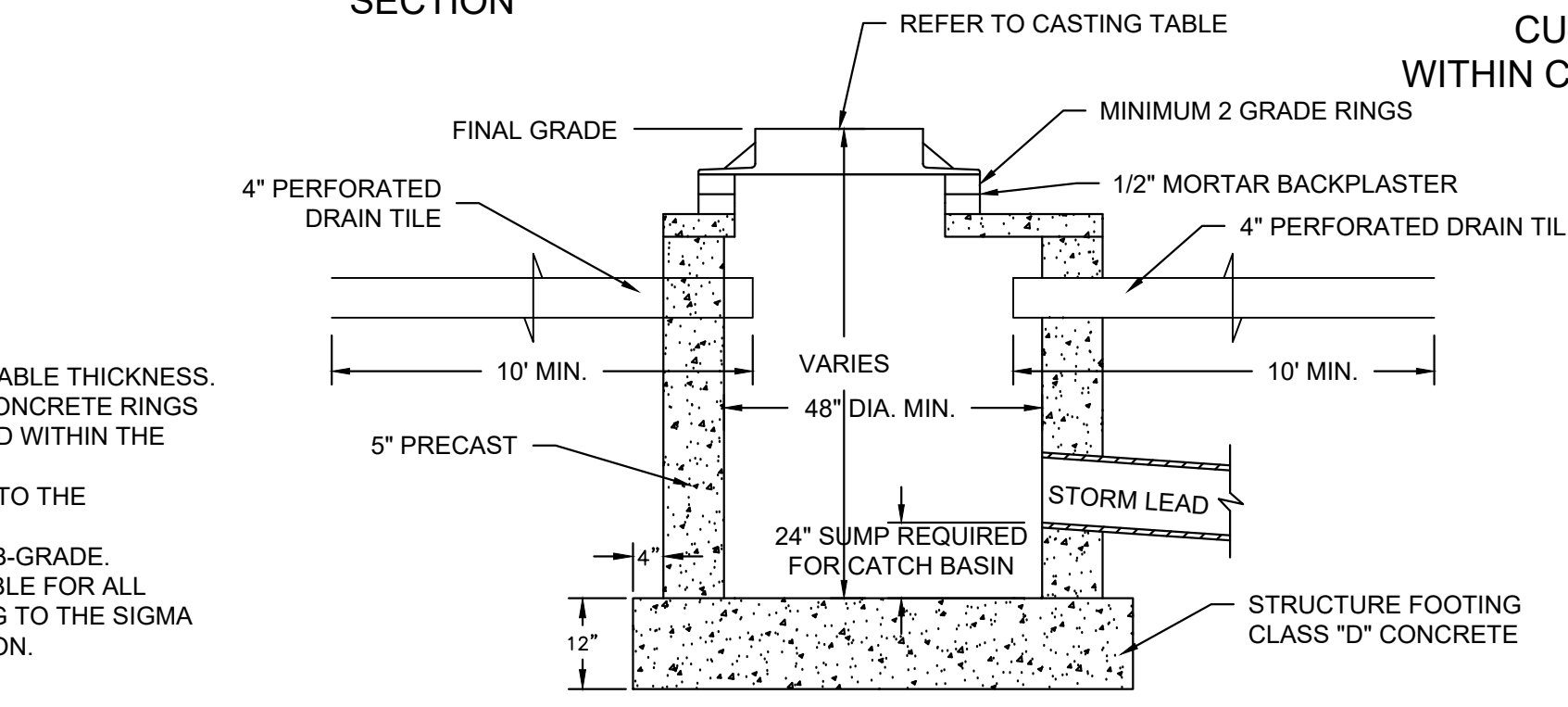
**I 4\"/>**



- NOTES:**
1. ADJUST FRAME TO GRADE WITH CONCRETE RINGS OF VARIABLE THICKNESS. MAXIMUM RING HEIGHT = 6". MINIMUM RING HEIGHT = 2". CONCRETE RINGS SHALL BE REINFORCED WITH ONE LINE OF STEEL CENTERED WITHIN THE RING.
  2. CONCRETE AND REINFORCEMENT STEEL SHALL CONFORM TO THE REQUIREMENTS OF ASTM DESIGNATION C-478.
  3. 3" BEDDING OF STONE UNDER BASE REQUIRED ON WET SUB-GRADE.
  4. UNLESS NOTED ON THE PLANS CONTRACTOR IS RESPONSIBLE FOR ALL CATCH BASIN SIZING AND SHALL PROVIDE A SHOP DRAWING TO THE SIGMA GROUP, INC. BEFORE THEY ARE RELEASED FOR PRODUCTION.



**G PRECAST STORM MANHOLE**  
NOT TO SCALE



**H INLET AND CATCH BASIN**  
NOT TO SCALE

CATCH BASIN / INET CASTING TABLE	IF 18" CURB & GUTTER		IF 24" CURB & GUTTER		IF 30" CURB AND GUTTER	
	CASTING	GRATE	CASTING	GRATE	CASTING	GRATE
CURB INLET	NEENAH R-3170	B	NEENAH R-3067	A	NEENAH R-3228H	C
AREA INLET	NEENAH R-2050	C				

**THE SIGMA GROUP**  
Single Source. Sound Solutions.  
www.thesigmagroup.com  
1300 West Canal Street  
Milwaukee, WI 53233  
Phone: 414-643-4200  
Fax: 414-643-4210

**WOODSPRING SUITES DEVELOPMENT  
MILWAUKEE, WI**

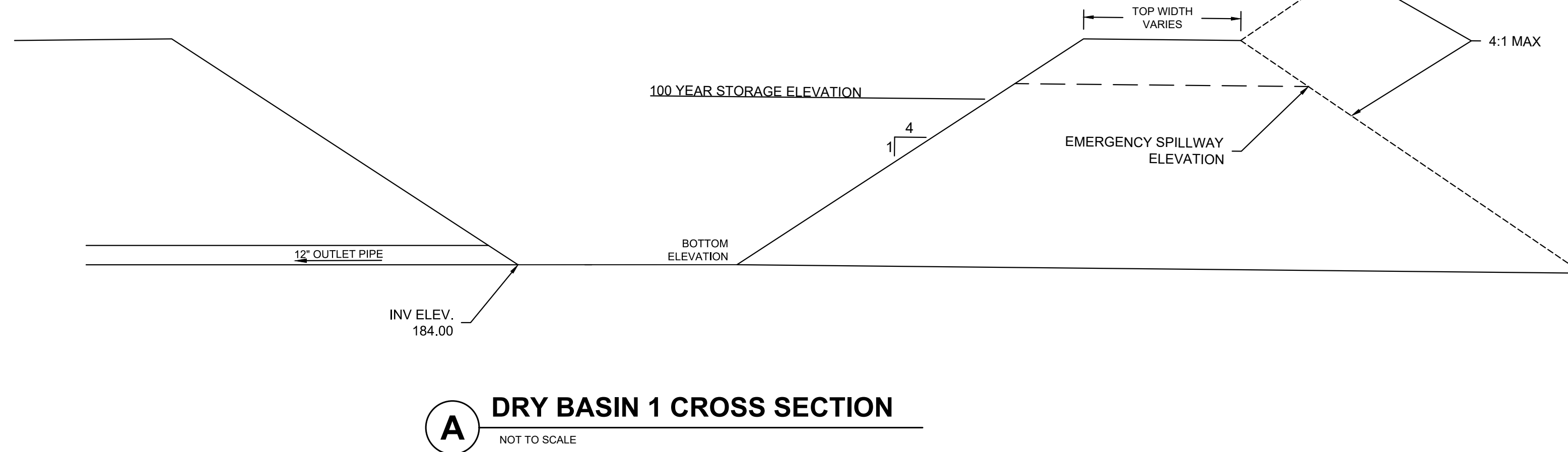
**DETAILS**

NO.	REVISION	DATE	BY

19092 DETAILS.DWG  
DRAWN BY: JRG  
DATE: 07-29-2020  
PROJECT NO: 19092  
CHECKED BY: SMM  
APPROVED BY: JBL  
SHEET NO.:

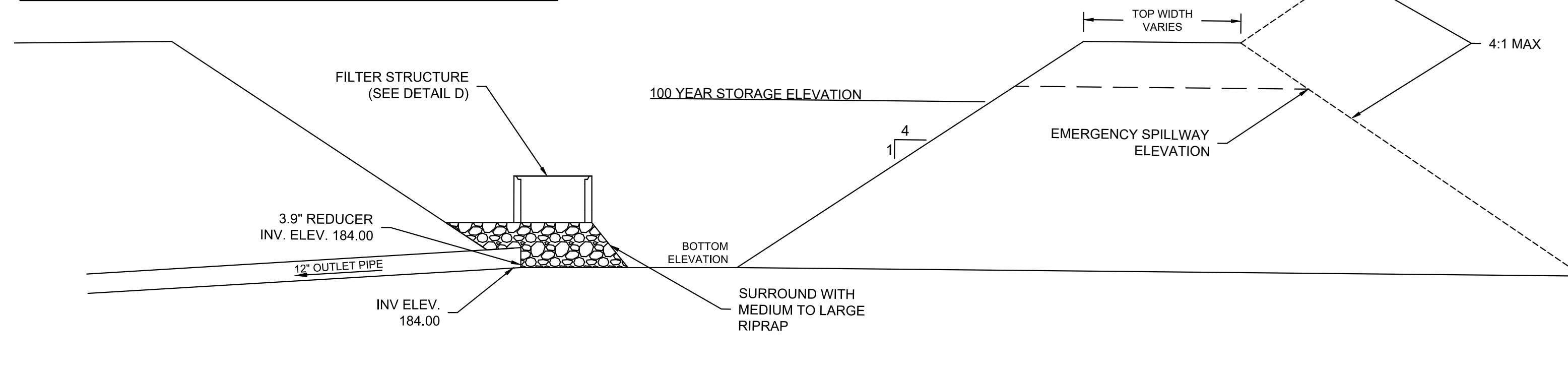
**C401**

DRY BASIN CONSTRUCTION INFORMATION					
DRY POND	TOP OF BERM MIN. (FT)	HWL (100-YR) (FT)	2-YR PEAK ELEV. (FT)	BOTTOM ELEVATION (FT)	EMERGENCY SPILLWAY ELEVATION (FT)
BASIN	188.00	186.95	185.10	184.00	187.00



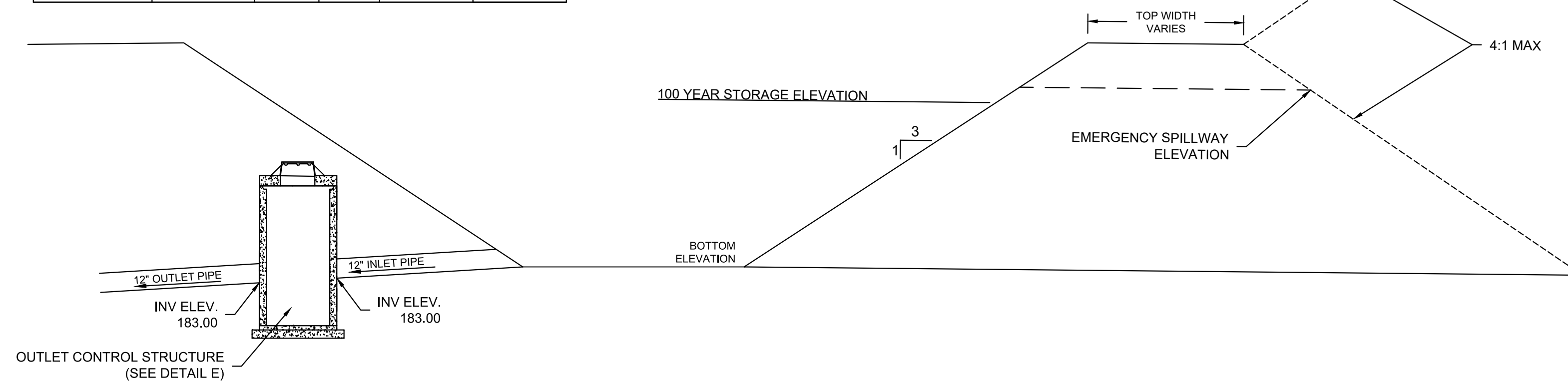
**A DRY BASIN 1 CROSS SECTION**  
NOT TO SCALE

DRY BASIN CONSTRUCTION INFORMATION					
DRY POND	TOP OF BERM MIN. (FT)	HWL (100-YR) (FT)	2-YR PEAK ELEV. (FT)	BOTTOM ELEVATION (FT)	EMERGENCY SPILLWAY ELEVATION (FT)
BASIN	188.00	186.95	185.10	184.00	187.00



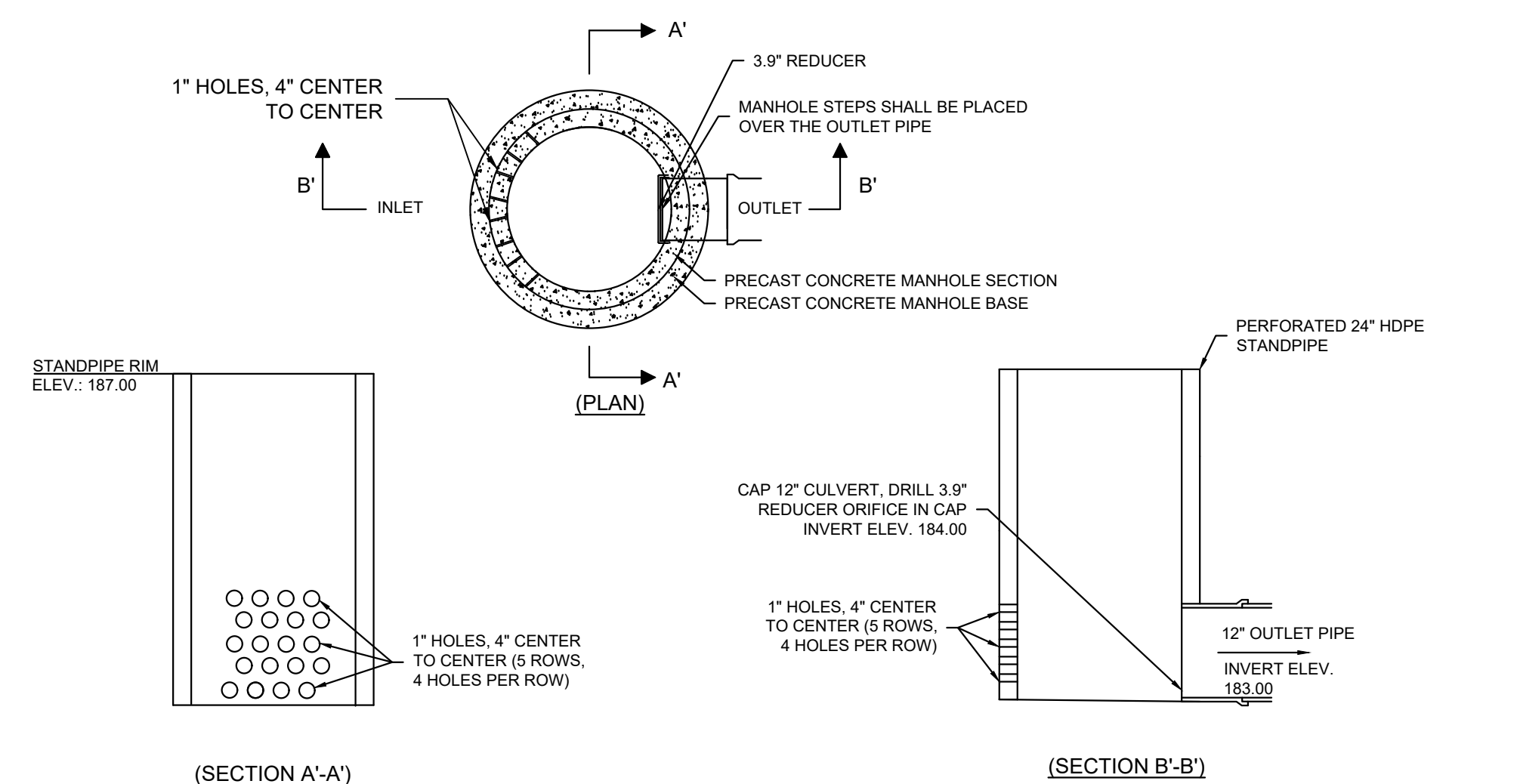
**B DRY BASIN 2 CROSS SECTION**  
NOT TO SCALE

DRY BASIN CONSTRUCTION INFORMATION					
DRY POND	TOP OF BERM MIN. (FT)	HWL (100-YR) (FT)	2-YR PEAK ELEV. (FT)	BOTTOM ELEVATION (FT)	EMERGENCY SPILLWAY ELEVATION (FT)
BASIN	186.50	185.49	184.96	183.00	185.50

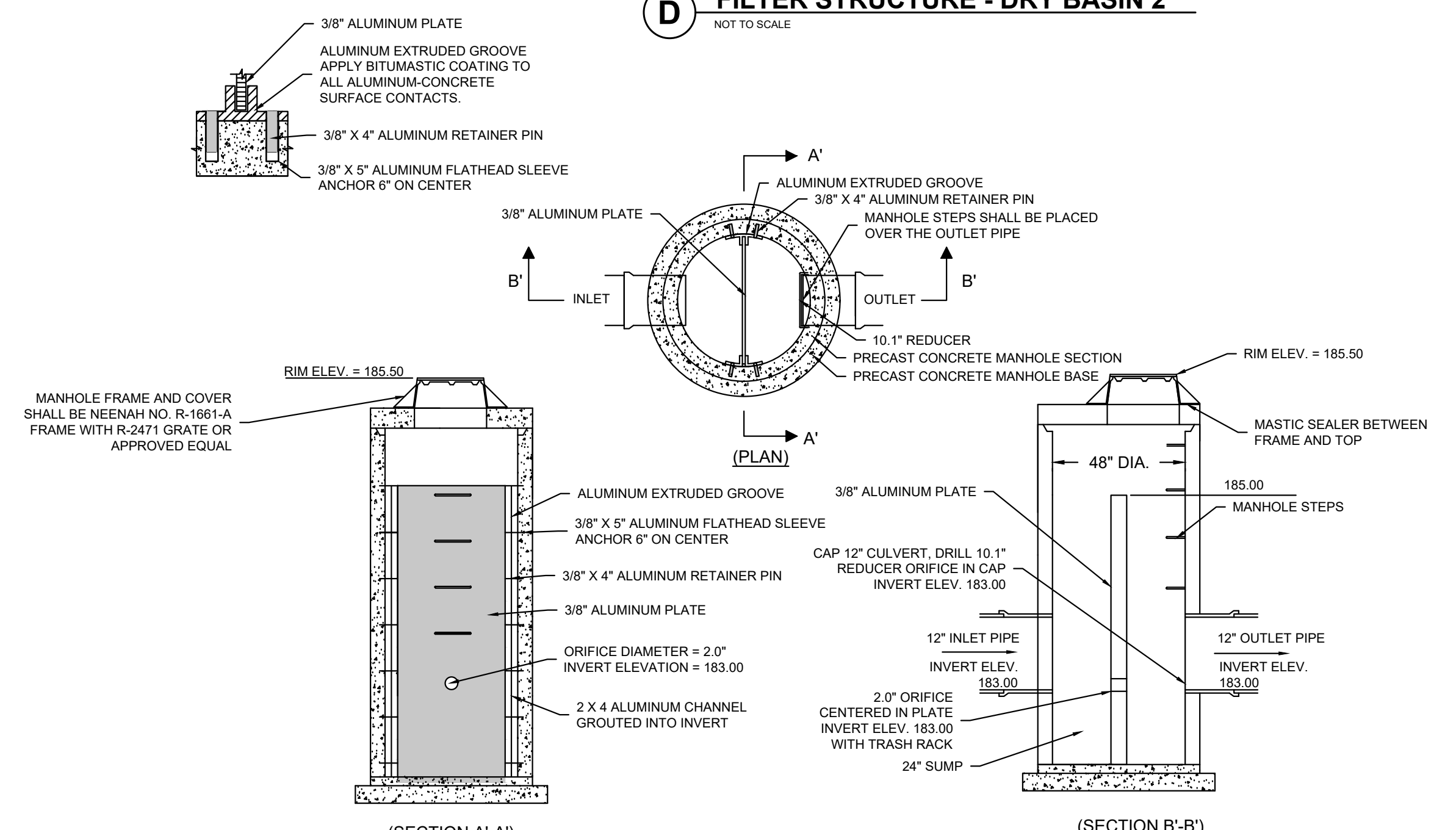


**C DRY BASIN 3 CROSS SECTION**  
NOT TO SCALE

ITEM	QTY	SIZE	DESCRIPTION
1	1	48 in	CONCRETE MANHOLE
2	6		FILTER MODULE
3	1		SUPPORT
4	1		ANGLED SCREEN
5	1		SIPHONIC BYPASS AND FLOATABLE BAFFLE
6	1		OUTLET MODULE AND PIPE STUB
7	1	30 in	FRAME AND COVER
8	1	12 in	INLET PIPE
9	1		DRAINDOWN FILTER



**D FILTER STRUCTURE - DRY BASIN 2**  
NOT TO SCALE



**E OUTLET CONTROL STRUCTURE - DRY BASIN 3**  
NOT TO SCALE

**SIGMA GROUP**  
Single Source. Sound Solutions.  
www.thesigmagroup.com  
1300 West Canal Street  
Milwaukee, WI 53233  
Phone: 414-643-4200  
Fax: 414-643-4210

**WOODSPRING SUITES DEVELOPMENT  
MILWAUKEE, WI**

**DETAILS**

NO. REVISION	DATE	BY
SITE REVISION	01-25-21	SMM
19092 DETAILS.DWG		
DRAWN BY: JRG		
DATE: 07-29-2020		
PROJECT NO: 19092		
CHECKED BY: SMM		
APPROVED BY: JBL		
SHEET NO.:		

**C402**









**Agrecol LLC**  
 www.agrecol.com  
 10101 N. Casey Road  
 Evansville, Wisconsin 53536  
 Ph: 608-223-3571

Project: Hillwood II - GrandView Business Park  
 Milwaukee, Wisconsin 53223

**Parking Lot Landscape Screening Requirements**

Requirements	Option A
Minimum landscape area width:	10'
1 canopy tree per:	20 LF
4 low shrubs or 8 perennials/orn. grasses per:	10 LF
Ornamental Fence or Masonry Wall:	None

**N. 124th Street Screen**

Requirements	Option A
Length of Parking:	298 LF
Required Canopy Trees:	14.9 Trees
Required Shrubs:	119.2 Shrubs

Canopy Trees Shown: 15.0 Trees  
 Shrubs Shown: 126.0 Shrubs  
 Perennial/Ornamental Grass Shown: 7.0 Plants

**W. Bradley Road Screen**

Requirements	Option A
Length of Parking:	118 LF
Required Canopy Trees:	5.9 Trees
Required Shrubs:	47.2 Shrubs

Canopy Trees Shown: 6.0 Trees  
 Shrubs Shown: 47.0 Shrubs

**W. Park Place Screen**

Requirements	Option A
Length of Parking:	298 LF
Required Canopy Trees:	14.9 Trees
Required Shrubs:	119.2 Shrubs

Canopy Trees Shown: 15.0 Trees  
 Shrubs Shown: 105.0 Shrubs

**Interior Parking Lot Landscaping**  
 One (1) canopy tree & 100 SF of landscape area per 4 spaces

Number of Parking Spaces:	132 Spaces
Required Landscape Area:	3,300 SF
Required Canopy Trees:	33.0 Trees

Landscape Area Shown: 3,464 SF  
 Canopy Trees Shown: 33 Trees

**Installation Sizes**

Canopy Trees:	2.5" Caliper
Evergreen Trees:	6" Height
Tall Shrubs:	48" H or 3 Gal.
Low Shrubs:	18" H or 3 Gal.
Perennials/Ornamental Grasses:	12" H or 1 Gal.

Ornamental trees at 2.5" can be counted as canopy tree, only 50% of total trees can be ornamental.

**CODE REQUIREMENTS**

**Rainwater Renewal**  
 For Use on Detention Basins and Bioretention Areas

Botanical Name	Common Name	PLS Ounces/Acre
<b>Permanent Grasses/Sedges/Rushes:</b>		
<i>Bromus ciliatus</i>	Fringed Brome	20.00
<i>Calamagrostis canadensis</i>	Blue Joint Grass	1.00
<i>Carex bebbii</i>	Bebb's Sedge	2.00
<i>Carex crawfordii</i>	Crawford's Sedge	1.00
<i>Carex crinita</i>	Fringed Sedge	0.75
<i>Carex stipata</i>	Common Fox Sedge	1.50
<i>Carex vulpinoidea</i>	Brown Fox Sedge	1.00
<i>Elymus canadensis</i>	Canada Wild Rye	24.00
<i>Elymus virginicus</i>	Virginia Wild Rye	32.00
<i>Glyceria grandis</i>	Reed Manna Grass	1.00
<i>Panicum virgatum</i>	Switchgrass	3.50
<i>Scirpus atrovirens</i>	Dark-Green Bullrush	0.50
<i>Scirpus cyperinus</i>	Wool Grass	0.30
<i>Sorghastrum nutans</i>	Indian Grass	5.00
<i>Spatina pectinata</i>	Prairie Cordgrass	3.00
<b>Total</b>		<b>96.55</b>

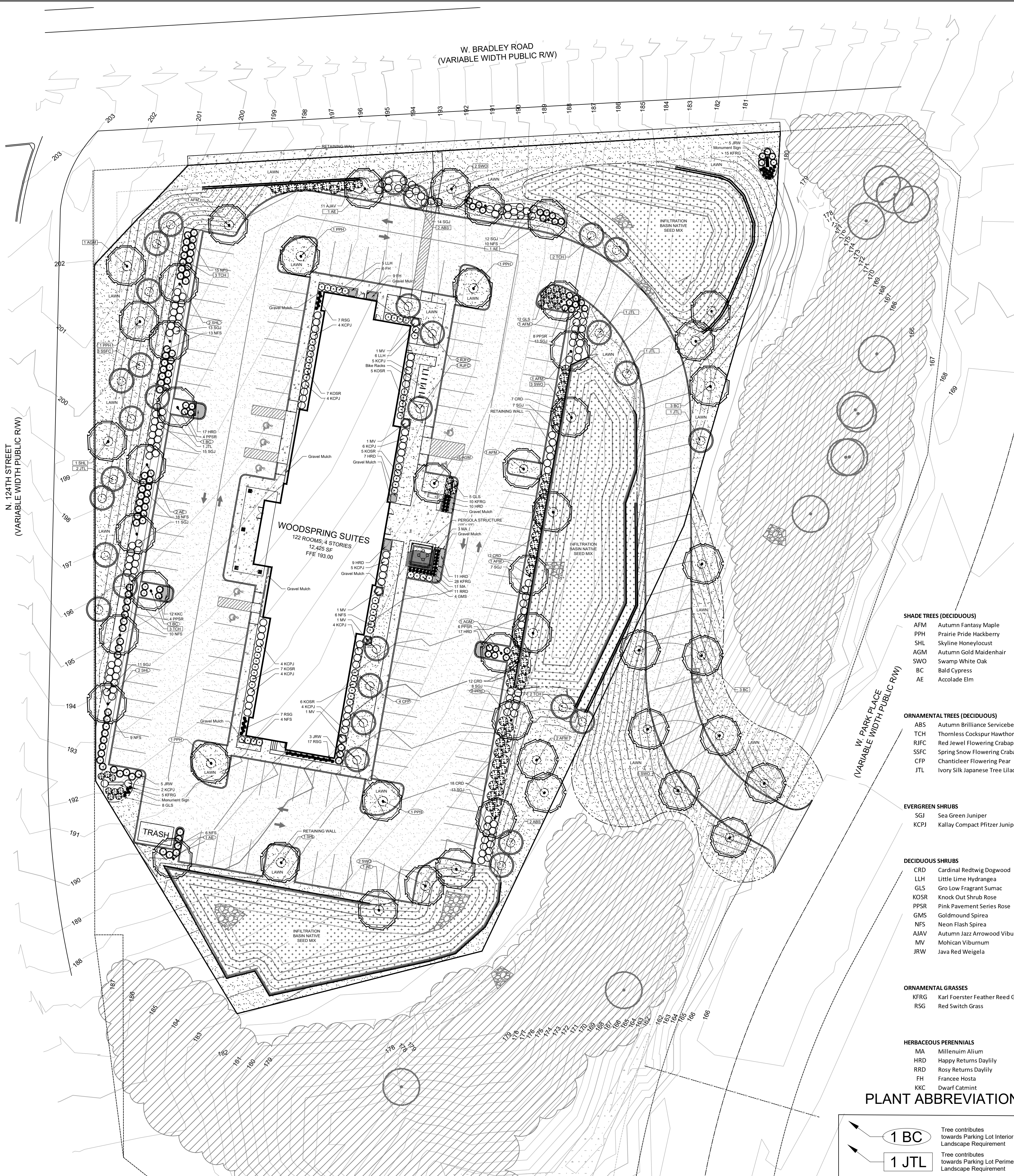
**Forbs:**

<i>Asclepias incarnata</i>	Marsh (Red) Milkweed	3.00
<i>Aster ericoides</i>	Heath Aster	0.10
<i>Aster novae-angliae</i>	New England Aster	1.50
<i>Baptisia leucantha</i>	Wild White Indigo	4.00
<i>Eupatorium maculatum</i>	Spotted Joe Pye Weed	0.80
<i>Eupatorium perfoliatum</i>	Boneset	0.50
<i>Liatris pycnostachya</i>	Prairie Blazing Star	2.50
<i>Liatris spicata</i>	Marsh Blazing Star	5.00
<i>Lobelia cardinalis</i>	Cardinal Flower	0.25
<i>Lobelia siphilitica</i>	Great Blue Lobelia	0.50
<i>Monarda fistulosa</i>	Wild Bergamot	1.50
<i>Physotegia virginiana</i>	Obedient Plant	1.50
<i>Pycnanthemum virginianum</i>	Mountain Mint	0.30
<i>Ratibida pinnata</i>	Yellow Coneflower	2.25
<i>Rudbeckia hirta</i>	Black-eyed Susan	2.00
<i>Rudbeckia subtomentosa</i>	Sweet Black-Eyed Susan	2.00
<i>Solidago ohioensis</i>	Ohio Goldenrod	0.50
<i>Tradescantia ohioensis</i>	Ohio Spiderwort	1.25
<i>Verbena hastata</i>	Blue Vervain	1.00
<i>Vernonia fasciculata</i>	Ironweed	1.00
<b>Total</b>		<b>31.45</b>

**Approximate area of coverage:**

Total area (SF) of coverage surrounding SWM ponds:	19,200
Total area (acres) of coverage surrounding SWM ponds:	0.44

**INFILTRATION BASIN SEED MIX**



- SHADE TREES (DECIDUOUS)**
- AFM Autumn Fantasy Maple
  - PPH Prairie Pride Hackberry
  - SHL Skyline Honeylocust
  - AGM Autumn Gold Maidenhair
  - SWO Swamp White Oak
  - BC Bald Cypress
  - AE Accolade Elm
- ORNAMENTAL TREES (DECIDUOUS)**
- ABS Autumn Brilliance Serviceberry
  - TCH Thornless Cockspear Hawthorn
  - RJFC Red Jewel Flowering Crabapple
  - SSFC Spring Snow Flowering Crabapple
  - CFP Chanticleer Flowering Pear
  - JTL Ivory Silk Japanese Tree Lilac
- EVERGREEN SHRUBS**
- SGJ Sea Green Juniper
  - KCPJ Kallay Compact Pfitzer Juniper
- DECIDUOUS SHRUBS**
- CRD Cardinal Redtwig Dogwood
  - LLH Little Lime Hydrangea
  - GLS Gro Low Fragrant Sumac
  - KOSR Knock Out Shrub Rose
  - PPSR Pink Pavement Series Rose
  - GMS Goldmound Spirea
  - NFS Neon Flash Spirea
  - AJAV Autumn Jazz Arrowwood Viburnum
  - MV Mohegan Viburnum
  - JRW Java Red Weigela
- ORNAMENTAL GRASSES**
- KFRG Karl Foerster Feather Reed Grass
  - RSG Red Switch Grass
- HERBACEOUS PERENNIALS**
- MA Millennium Allium
  - HRD Happy Returns Daylily
  - RHD Rosy Returns Daylily
  - FH France Hosta
  - KKC Dwarf Catmint

**PLANT ABBREVIATIONS**

- 1 BC Tree contributes towards Parking Lot Interior Landscape Requirement
- 1 JTL Tree contributes towards Parking Lot Perimeter Landscape Requirement

**BRADLEY-PARK PLACE SITE  
 MILWAUKEE, WI**

**OVERALL LANDSCAPE PLAN**

NO. REVISION	DATE BY
DRAWING NO.	
DRAWN BY:	PCA
DATE:	03/02/2021
PROJECT NO:	
CHECKED BY:	WDH
APPROVED BY:	WDH
SHEET NO.:	

**L100**

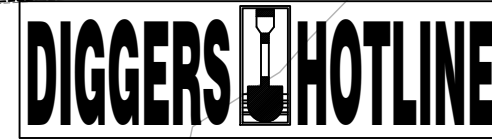


P.O. Box 1359  
 Lake Geneva, Wisconsin 53147-1359  
 ph 262.639.9733  
 david@wdavidheller.com  
 www.wdavidheller.com

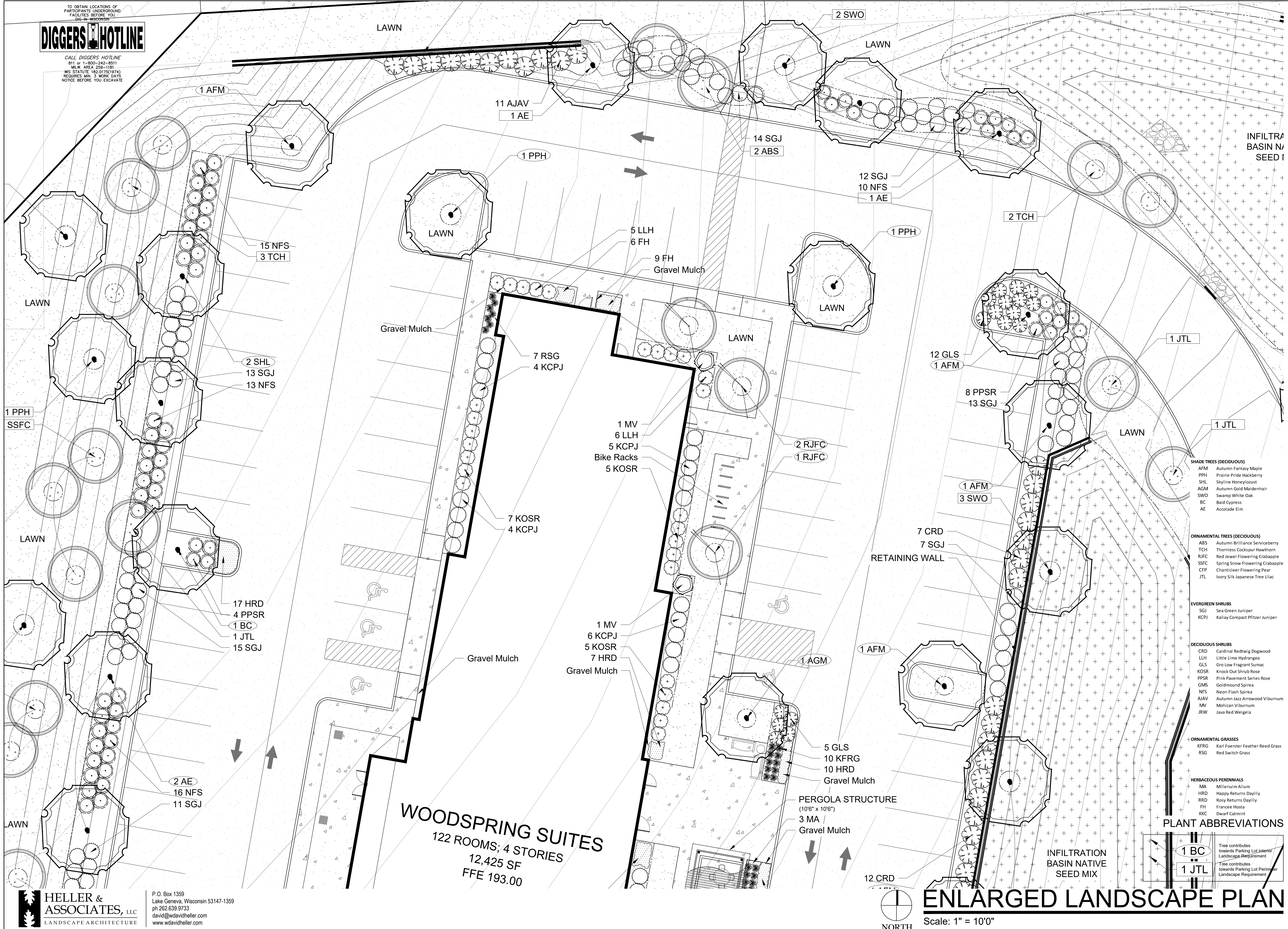


**OVERALL LANDSCAPE PLAN**

Scale: 1" = 30'0"



CALL DIGGERS HOTLINE  
 811 or 1-800-258-1181  
 MILWAUKEE AREA 258-1181  
 WIS. STATUTE 182.07(1)(a)  
 REQUIRES MIN. 3 WORK DAYS  
 NOTICE BEFORE YOU EXCAVATE



**WOODSPRING SUITES**  
 122 ROOMS; 4 STORIES  
 12,425 SF  
 FFE 193.00

- SHADE TREES (DECIDUOUS)**
- AFM Autumn Fantasy Maple
  - PPH Prairie Pride Hackberry
  - SHL Skyline Honeylocust
  - AGM Autumn Gold Maidenhair
  - SWO Swamp White Oak
  - BC Bald Cypress
  - AE Accolade Elm
- ORNAMENTAL TREES (DECIDUOUS)**
- ABS Autumn Brilliance Serviceberry
  - TCH Thornless Cockspear Hawthorn
  - RJFC Red Jewel Flowering Crabapple
  - SSFC Spring Snow Flowering Crabapple
  - CFP Chanticleer Flowering Pear
  - JTL Ivory Silk Japanese Tree Lilac
- EVERGREEN SHRUBS**
- SGJ Sea Green Juniper
  - KCPJ Kaiyoy Compact Pfitzer Juniper
- DECIDUOUS SHRUBS**
- CRD Cardinal Redtwig Dogwood
  - LLH Little Lime Hydrangea
  - GLS Gro-Low Fragrant Sumac
  - KOSR Knock Out Shrub Rose
  - PPSR Pink Pavement Series Rose
  - GMS Goldmound Spirea
  - NFS Neon Flash Spirea
  - AJAV Autumn Jazz Arrowwood Viburnum
  - MV Mohican Viburnum
  - JRW Java Red Weigela
- ORNAMENTAL GRASSES**
- KFRG Karl Foerster Feather Reed Grass
  - RSG Red Switch Grass
- HERBACEOUS PERENNIALS**
- MA Millennium Allium
  - HRD Happy Returns Daylily
  - RRD Rosy Returns Daylily
  - FH Frances Hosta
  - KKC Dwarf Catmint

- PLANT ABBREVIATIONS**
- 1 BC Tree contributes towards Parking Lot Interior Landscape Requirement
  - 1 JTL Tree contributes towards Parking Lot Perimeter Landscape Requirement

**BRADLEY-PARK PLACE SITE**  
 MILWAUKEE, WI

**ENLARGED LANDSCAPE PLAN**

NO. REVISION	DATE BY



**ENLARGED LANDSCAPE PLAN**  
 Scale: 1" = 10'0"



**WOODSPRING SUITES**  
122 ROOMS; 4 STORIES  
12,425 SF  
FFE 193.00

PERGOLA STRUCTURE  
(10'6" x 10'6")  
3 MA  
Gravel Mulch

INFILTRATION  
BASIN NATIVE  
SEED MIX

- SHADE TREES (DECIDUOUS)**
- AFM Autumn Fantasy Maple
  - PPH Prairie Pride Hackberry
  - SHL Skyline Honeylocust
  - AGM Autumn Gold Maidenhair
  - SWO Swamp White Oak
  - BC Bald Cypress
  - AE Accolade Elm
- ORNAMENTAL TREES (DECIDUOUS)**
- ABS Autumn Brilliance Serviceberry
  - TCH Thornless Cocksaur Hawthorn
  - RJFC Red Jewel Flowering Crabapple
  - SSFC Spring Snow Flowering Crabapple
  - CFP Chanticleer Flowering Pear
  - JTL Ivory Silk Japanese Tree Lilac
- EVERGREEN SHRUBS**
- SGJ Sea Green Juniper
  - KCPJ Kallay Compact Pfitzer Juniper
- DECIDUOUS SHRUBS**
- CRD Cardinal Redtwig Dogwood
  - LLH Little Lime Hydrangea
  - GLS Gro Low Fragrant Sumac
  - KOSR Knock Out Shrub Rose
  - PPSR Pink Pavement Series Rose
  - GMS Goldmound Spirea
  - NFS Neon Flash Spirea
  - AJAV Autumn Jazz Arrowwood Viburnum
  - MV Mohican Viburnum
  - JRW Java Red Weigela
- ORNAMENTAL GRASSES**
- KFRG Karl Foerster Feather Reed Grass
  - RSG Red Switch Grass
- HERBACEOUS PERENNIALS**
- MA Millenium Allium
  - HRD Happy Returns Daylily
  - RRD Rosy Returns Daylily
  - FH Francee Hosta
  - KKC Dwarf Catmint

**PLANT ABBREVIATIONS**

- 1 BC Tree contributes towards Parking Lot Interior Landscape Requirement
- 1 JTL Tree contributes towards Parking Lot Perimeter Landscape Requirement

**BRADLEY-PARK PLACE SITE**  
MILWAUKEE, WI

**ENLARGED LANDSCAPE PLAN**

NO. REVISION	DATE BY
DRAWING NO.	
DRAWN BY:	PCA
DATE:	03/02/2021
PROJECT NO:	
CHECKED BY:	WDH
APPROVED BY:	WDH
SHEET NO.:	





**WoodSpring Suites**  
MILWAUKEE, WISCONSIN

**DESIGN REPRESENTATION ONLY - NOT FOR CONSTRUCTION**  
The building images shown are a representation of the current design intent only. The building images may not reflect variations in color, tone, hue, tint, shading, ambient light intensity, materials, texture, contrast, font style, construction variations required by building codes or inspectors, material availability or final design detailing.



# WoodSpring Suites Overall Perspective

MILWAUKEE, WISCONSIN

DESIGN REPRESENTATION ONLY - NOT FOR CONSTRUCTION  
The building images shown are a representation of the current design intent only. The building images may not reflect variations in color, tone, hue, tint, shading, ambient light intensity, materials, texture, contrast, font style, construction variations required by building codes or inspectors, material availability or final design detailing.





# WoodSpring Suites Entry Perspective

MILWAUKEE, WISCONSIN

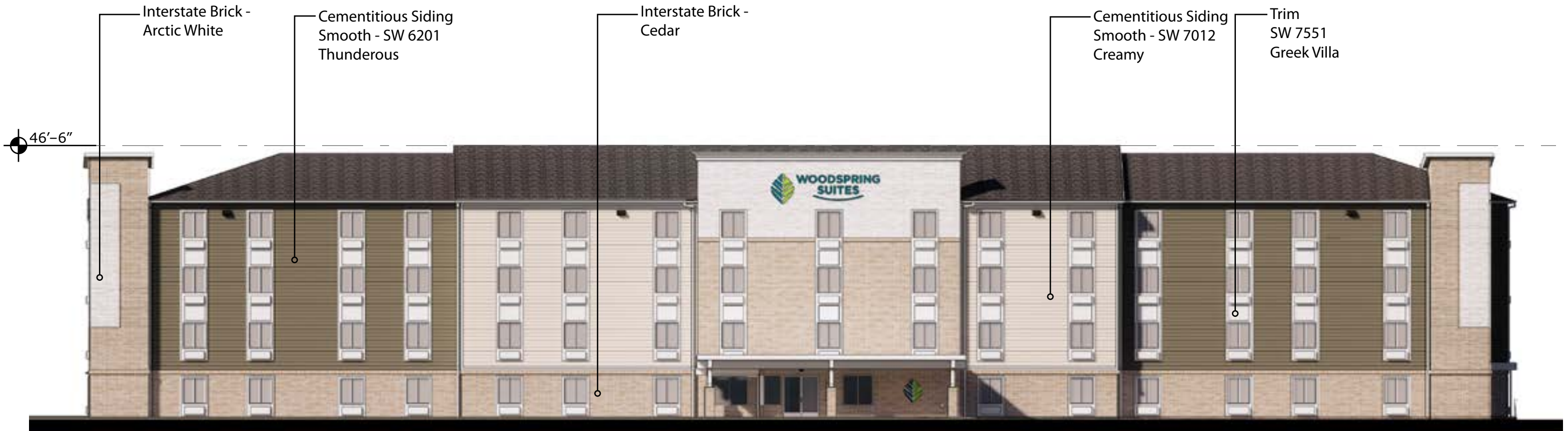
DESIGN REPRESENTATION ONLY - NOT FOR CONSTRUCTION  
The building images shown are a representation of the current design intent only. The building images may not reflect variations in color, tone, hue, tint, shading, ambient light intensity, materials, texture, contrast, font style, construction variations required by building codes or inspectors, material availability or final design detailing.



# WoodSpring Suites Rear Perspective

MILWAUKEE, WISCONSIN

DESIGN REPRESENTATION ONLY - NOT FOR CONSTRUCTION  
The building images shown are a representation of the current design intent only. The building images may not reflect variations in color, tone, hue, tint, shading, ambient light intensity, materials, texture, contrast, font style, construction variations required by building codes or inspectors, material availability or final design detailing.



Front (West) Elevation



Left (North) Elevation



**WoodSpring Suites** Elevations  
MILWAUKEE, WISCONSIN

DESIGN REPRESENTATION ONLY - NOT FOR CONSTRUCTION  
The building images shown are a representation of the current design intent only. The building images may not reflect variations in color, tone, hue, tint, shading, ambient light intensity, materials, texture, contrast, font style, construction variations required by building codes or inspectors, material availability or final design detailing.

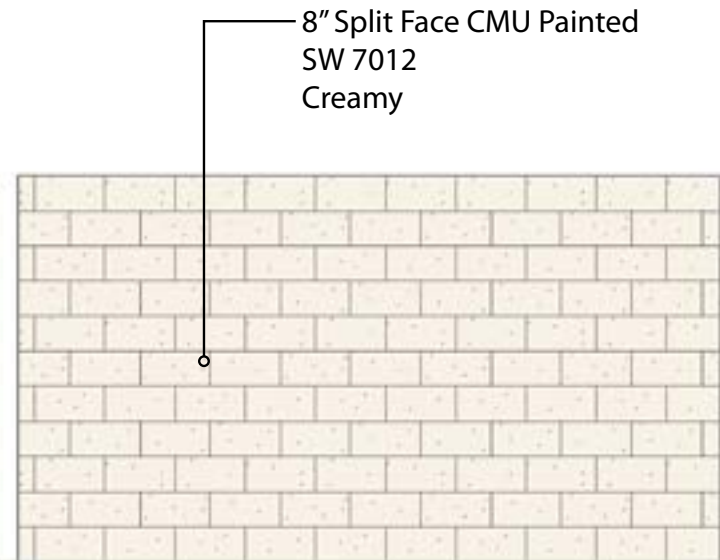


Rear (East) Elevation

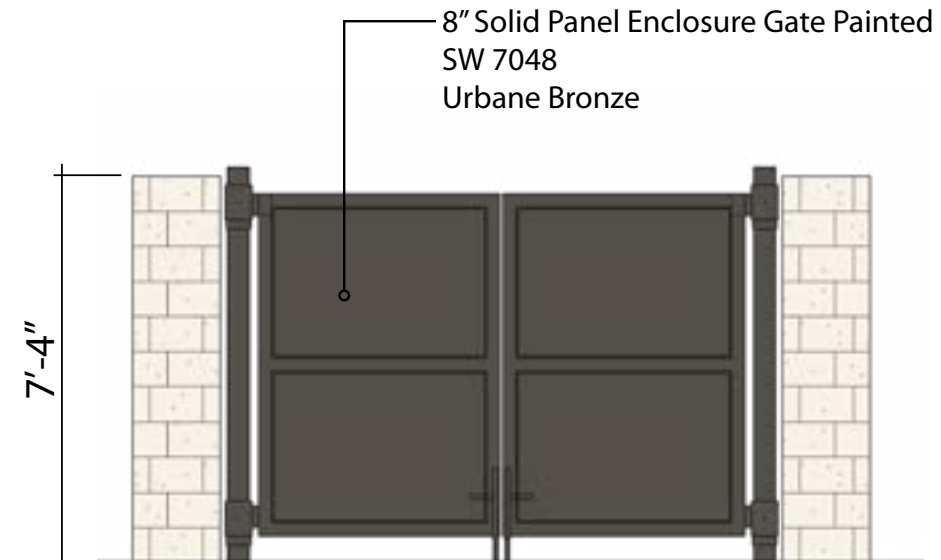


Right (South) Elevation

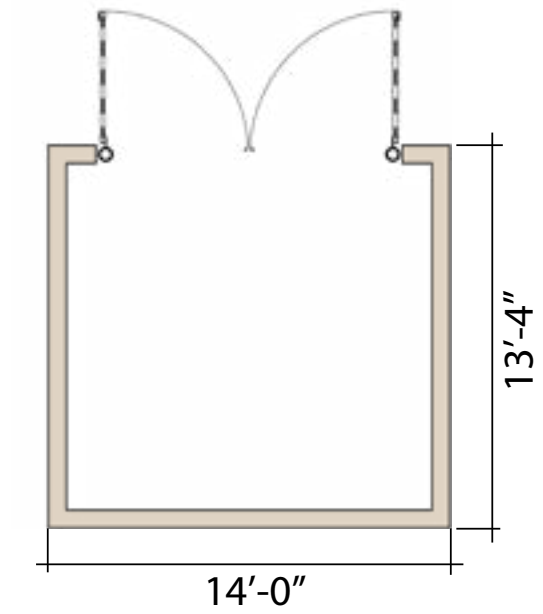




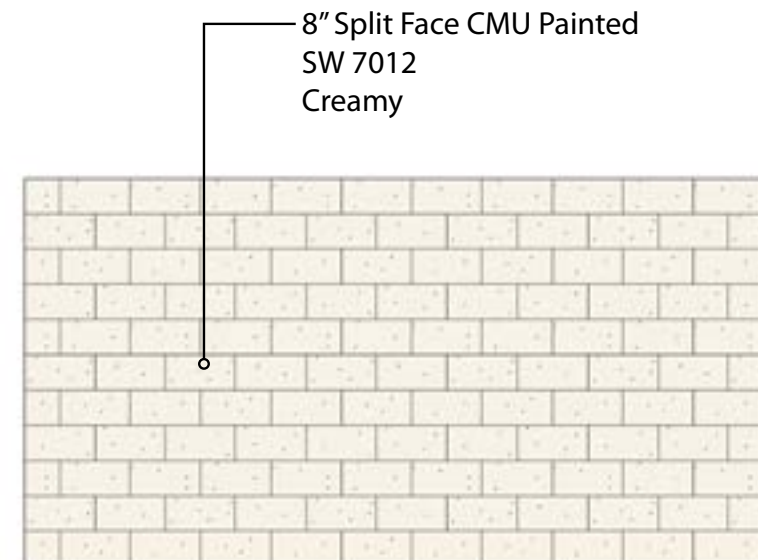
East Elevation



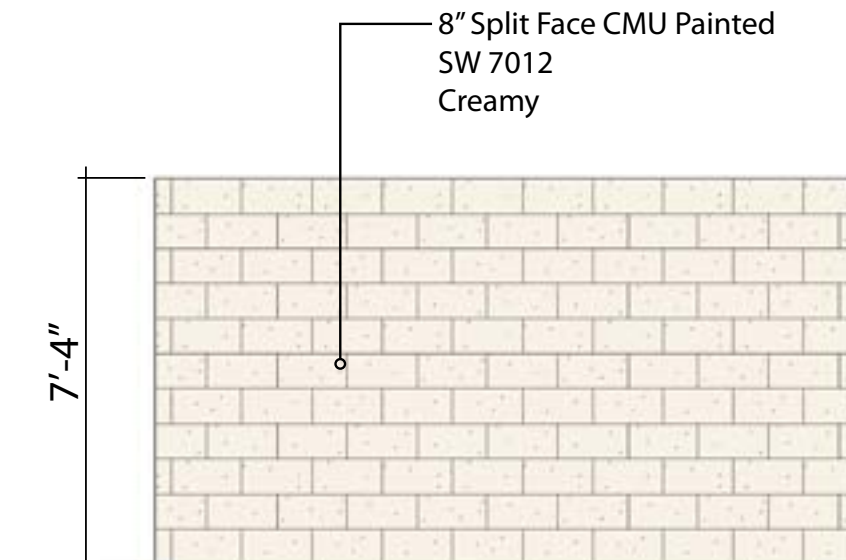
North Elevation



Plan View



South Elevation

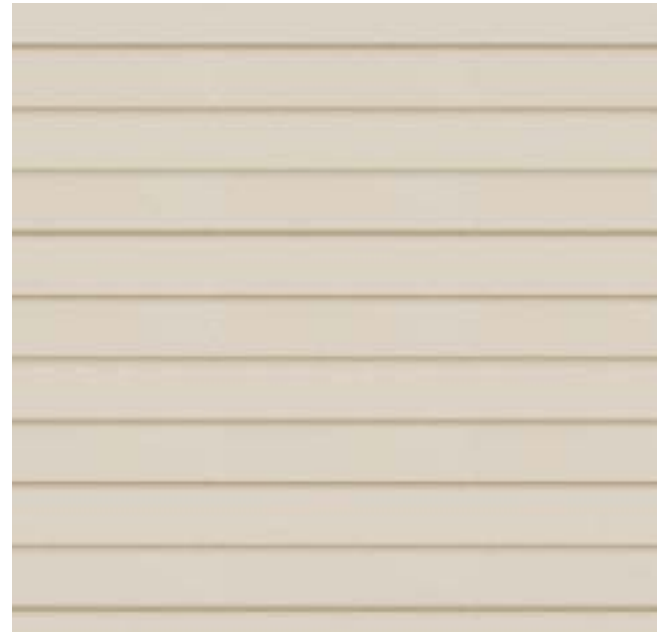


West Elevation

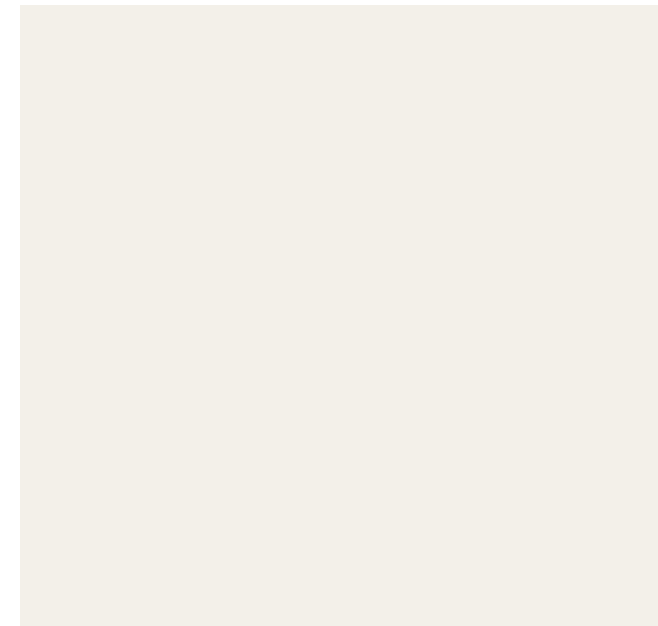




Cementitious Siding - Smooth -  
SW 6201 "Thunderous"



Cementitious Siding - Smooth -  
SW 7012 "Creamy"



Trim SW 7551 "Greek Villa"



[Interstate Brick - Cedar](#)



[Interstate Brick - Arctic White](#)

