

FN 061014  
 Revised Elevations  
 AS of 1-2-07



OSWELL + NITZSHIN  
 ARCHITECTS  
 LAND DEVELOPMENT  
 134 POWERS BLVD. SUITE 100  
 MARIETTA, GEORGIA 30067  
 770-596-8878 TEL/PHONE  
 770-596-8871 FAX/PHONE

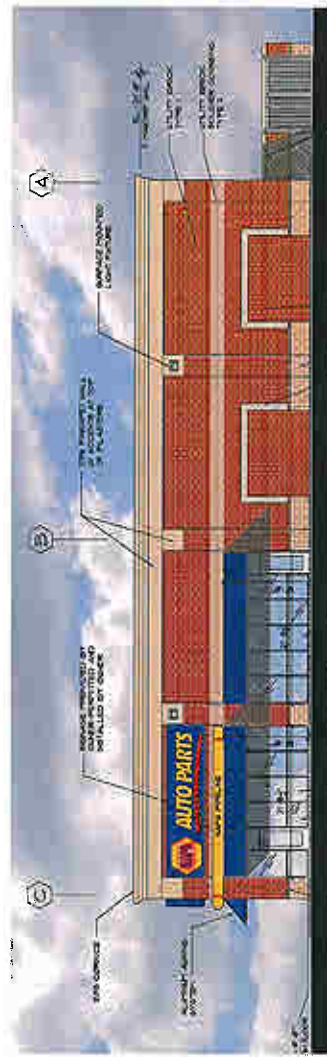
CONTRACT NO. 061014  
 PROJECT NO. 061014  
 SHEET NO. 061014-01

**AUTO PARTS**  
 GENUINE PARTS COMPANY  
 222 CHASTAIN MEADOWS COURT  
 SUITE 200  
 KENNESAW, GA 30144

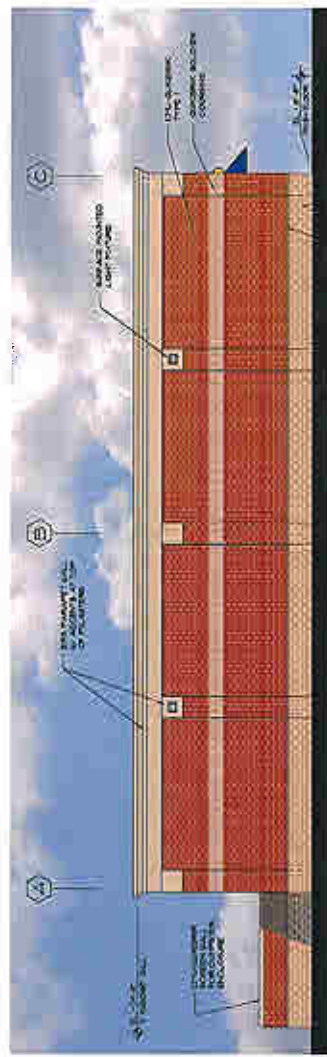
**NAPA AUTO PARTS**  
 STORE  
 MILWAUKEE, WISCONSIN

ORIGINAL ISSUE DATE: 1/2006  
 REVISIONS:  
 1 12/2006 CITY COMMENTS

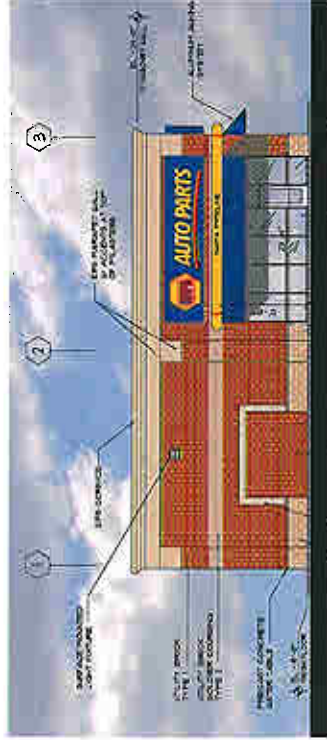
EXTERIOR ELEVATIONS  
 Project Number: 061014  
**ELEV.**



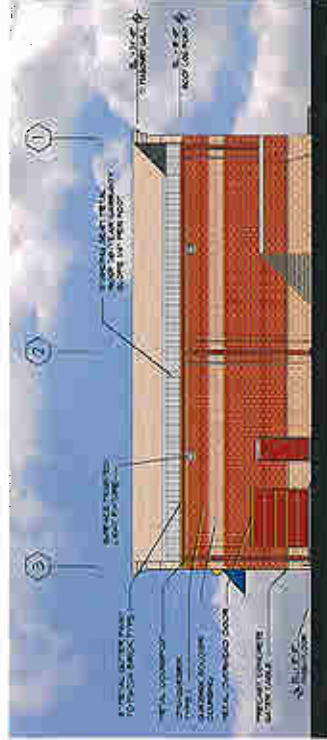
**FRONT ELEVATION**  
 SCALE: 1/8"=1'-0"



**REAR ELEVATION**  
 SCALE: 1/8"=1'-0"



**SIDE ELEVATION**  
 SCALE: 1/8"=1'-0"



**SIDE ELEVATION**  
 SCALE: 1/8"=1'-0"

**MATERIAL SPECIFICATIONS:**  
 BRICK TYPE 1 - UTILITY BRICK, TO MATCH EXISTING BRICK, 100% COFFA IMPACT  
 BRICK TYPE 2 - UTILITY BRICK, TO MATCH EXISTING BRICK, 100%  
 BRICK TYPE 3 - UTILITY BRICK, TO MATCH EXISTING BRICK, 100%  
 CONCRETE WATER TABLE - TO MATCH ELEV. 10"  
 CONCRETE WATER TABLE - TO MATCH ELEV. 10"



1" INSULATED CLEAR  
GLASS SET IN CLEAR  
ANODIZED ALUMINUM  
STOREFRONT SYSTEM

UTILITY BRICK TYPE 1, TYP.

**FRONT ELEVATION**

SCALE: 1/8"=1'-0"

8" X 16" SPLIT-FACE CONCRETE  
MASONRY UNITS

UTILITY BRICK TYPE 3

NOTE: SECONDARY STREET ELEVATION WITHOUT 2 GLAZED PANELS.