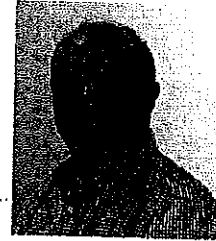


George Meyer, AIA, LEED-AP

Chief Executive Officer



Education:

Master of Architecture, Architectural Studies, University of Wisconsin-Milwaukee, 1984

Bachelor of Science in Architecture
University of Illinois, 1980

Registration:

Alabama, Arizona, Arkansas, Colorado, District of Columbia, Georgia, Illinois, Indiana, Iowa, Kansas, Kentucky, Louisiana, Maine, Maryland, Michigan, Missouri, Nebraska, New Jersey, New Hampshire, North Carolina, Ohio, Oklahoma, Pennsylvania, Rhode Island, South Carolina, Tennessee, Texas, Utah, West Virginia, Wisconsin & Wyoming; Ontario, Canada; NCARB certification; LEED Accredited Professional

Organizations:

American Institute of Architects, AIA Wisconsin; board of directors, Westown Association; member, Westown Community Economic Development Committee; board of directors, Milwaukee Downtown, BID #21; member, Greater Milwaukee Committee; board of directors, Jewish Community Center; board member, Potawatomi Area Council of the Boy Scouts; member TEC (a nationwide organization of chief executives); past president, Sharon Lynne Wilson Center for the Arts; past member board of directors, Future Milwaukee, past member, board of directors, Historic Milwaukee

Awards:

"Best Small & Medium Companies to Work for in America" Award for Kahler Slater, Great Places to Work Institute™, 2015, 2014, 2013, 2012, 2011, 2010, 2009, 2008, 2007, 2006, 2005, 2004.

George is Chief Executive Officer for Kahler Slater. With offices in Milwaukee, Madison and Singapore, Kahler Slater provides design services for Health Care, Hospitality, Higher Education, Multi-Family, Corporate, and Environmental Branding clients. George is known for his strong financial, organization and communication skills along with his skills in leading highly complex projects.

For the past 30 years at Kahler Slater, George has completed local projects including the Milwaukee Water Council, Eaton Corporation, Irgens Development Partners, the Milwaukee Symphony Orchestra, the Milwaukee Jewish Federation, the Jewish Community Center, Stark Investments, Miller Brewing Company, Jackson Street Partners, University of Wisconsin System, Marcus Hotels and Resorts, U.S. Bank, Milwaukee Area Technical College, Northwestern Mutual, and Fiserv.

Since Kahler Slater is located in Westown in downtown Milwaukee, he is a member of the Westown Association Board of Directors and BID 21, the Downtown Neighborhood Business Improvement District. As a downtown business owner, George is heavily invested in the success of downtown Milwaukee and in particular Wisconsin Avenue. Although Kahler Slater works across the globe, most of its employees live and work in Milwaukee. Wisconsin Avenue is a key to invigorating the business and cultural center of the city. George is interested in the revitalization of downtown Milwaukee and as such has been invited to serve on the Mayor's Task Force on West Wisconsin Avenue, participated in the Strategic Actioning Session for Wisconsin Avenue, and is now an inaugural board member of WAMDC.