

**Columbia St. Mary's**  
A Passion for Patient Care™  
Milwaukee, WI

**h+k**  
ARCHITECTURE, ENGINEERING, PLANNING,  
INTERIORS, GRAPHICS, CONSULTING  
30 West Monroe, Suite 1900, Chicago, IL 60603  
Voice: 312.782.1000  
Fax: 312.782.8727  
Internet: <http://www.hsk.com>

**corbin**  
Corbin Design  
109 East Front 304  
Traverse City, MI 49684  
231 947.1236

Symbol	Description
	Public Vehicular Route
	Building
	Garage
	Elevator
	Concourse
	Ambulance Route
	Entrance
	Direction of Traffic

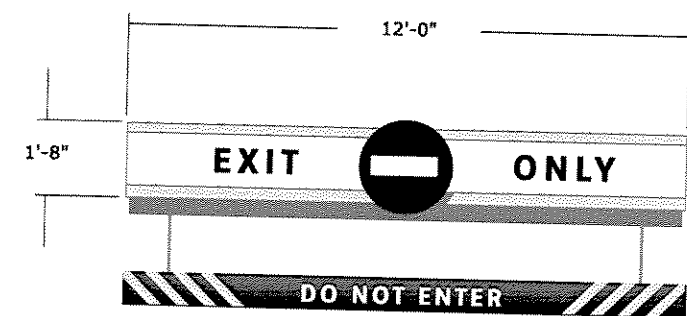
Revision	Date	Notes
1	03.21.06	Preliminary locations
2	03.29.06	Revised Nomenclature & Locations
3	04.06.06	Revised Nomenclature
4	06.07.06	FOR BID

### Sign Location Plan Prospect Medical Commons

Public Circulation Patterns &  
Preliminary Locations for High Level  
Wayfinding and Identification Signs

Symbol	Description
	Permanent Fabrication
	Ixc-1 Free-standing Main ID
	Ixc-2 Boundary Marker
	Ixc-3 Building Identification
	Ixc-4 Building Entrance ID (overhead)
	Ixc-5 Parking Entrance ID
	Ixc-6 Pkg ID w/ Mssg. Board
	Ixc-7 Building Address Numbers
	Ixc-8 Building Entrance ID (wall)
	Gxc-1 Cantilever Guide
	Gxc-2 3-Sided Vehicular Guide
	Gxc-3 Primary Vehicular Guide
	Gxc-4 Secondary Vehic. Guide
	Gxc-5 Sec. Veh. Guide (small)
	Gxc-6 Parking ID/Guide
	Rxc-1,2,3 Regulatory
	Temporary Fabrication
	Gxt-P Primary Vehicular Guide
	Gxt-S Secondary Vehic. Guide

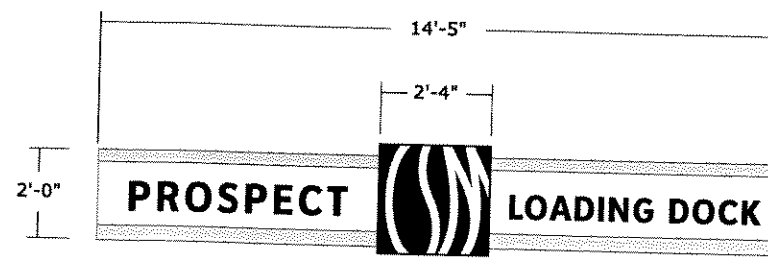
Prospect Medical Commons  
Exterior Wayfinding



Sign Cabinet - aluminum fabricated with internal illumination. White acrylic sign faces with opaque black copy and translucent red vinyl. White and red to glow at night. Overall thickness to be 7" with a 2" projected no entry symbol. Illumination to be T12 HO fluorescent lamps.

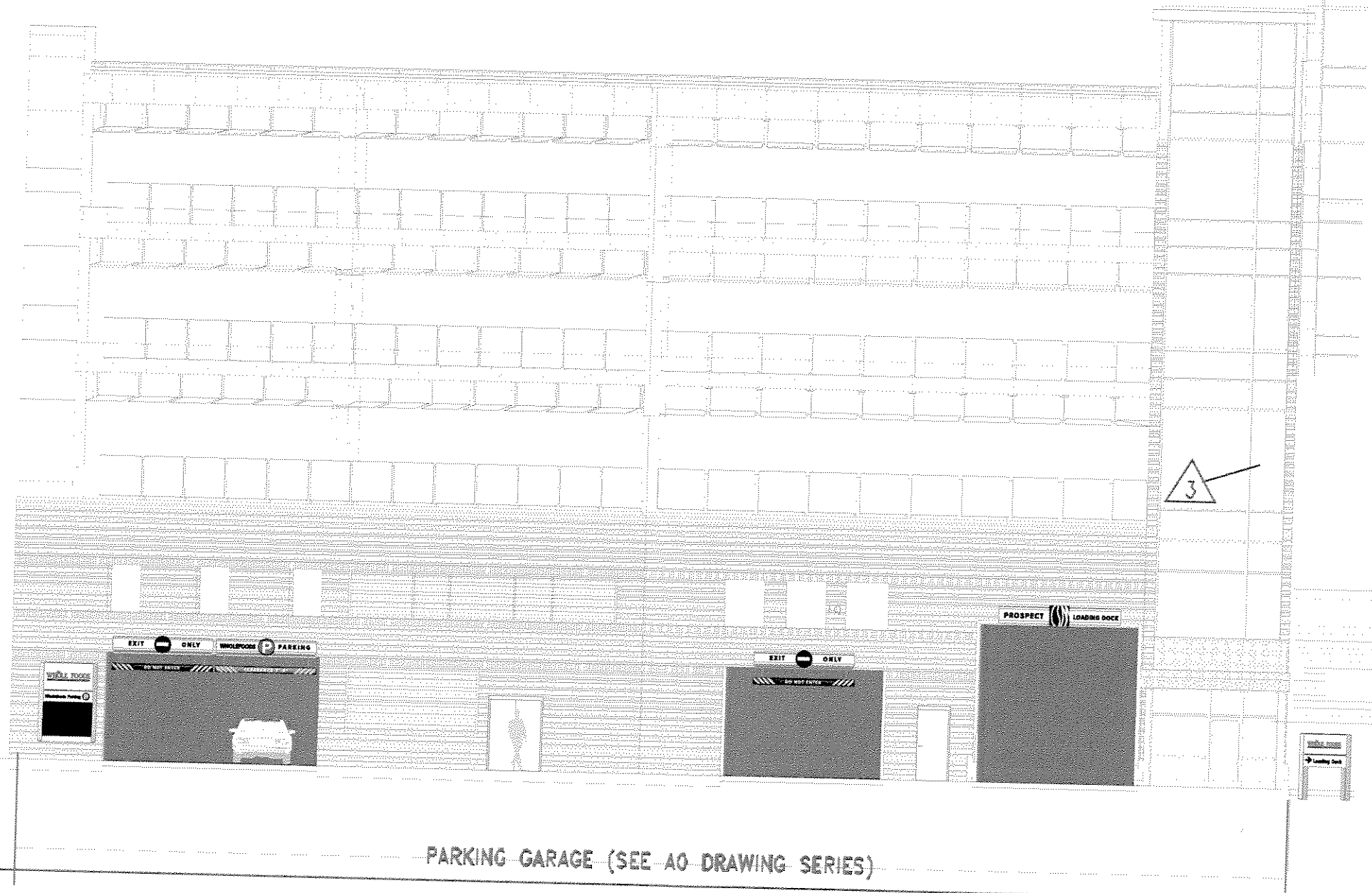
Clearance Bar - PVC tube painted red with reflective vinyl copy and stripes. Supported from the bottom of the sign cabinet using aircraft cable.

**26 27** Ixc-5 Parking Entrance Identification  
Scale: 1/4" = 1'-0"



Sign Cabinet - aluminum fabricated with internal illumination. White acrylic sign faces with opaque black copy and translucent red vinyl. White and red to glow at night. Overall thickness to be 7" with a 2" projected corporate logo. Illumination to be T12 HO fluorescent lamps.

**25** Ixc-5 Parking Entrance Identification  
Scale: 1/4" = 1'-0"

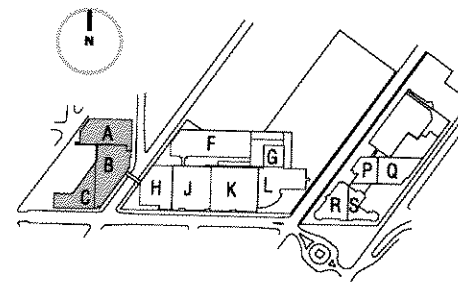


Release	Date	Notes
1	03.21.06	Preliminary Design
2	06.08.06	FOR BID

Key to Symbols and Colors

- 1 White
- 2 Burgundy PMS 194
- 3 Black
- 4 Champagne (Anodize)
- 5 Light Stainless Steel

Campus Plan



Master Signage Program

**Columbia St. Mary's**  
A Passion for Patient Care  
Milwaukee, WI

HELLMUTH, OBATA + KASSABAUM, INC.

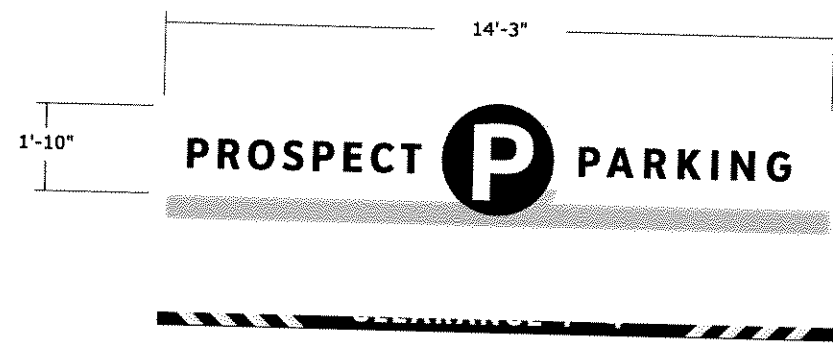
**h+k**  
ARCHITECTURE, ENGINEERING, PLANNING,  
INTERIORS, GRAPHICS, CONSULTING

30 West Monroe, Suite 1500, Chicago, IL 60603  
Voice: 312.782.1900  
Fax: 312.782.8727  
Internet: <http://www.hok.com>

*corbin*  
**corbin**  
Corbin Design  
109 East Front 304  
Traverse City, MI 49684  
231 947.1236

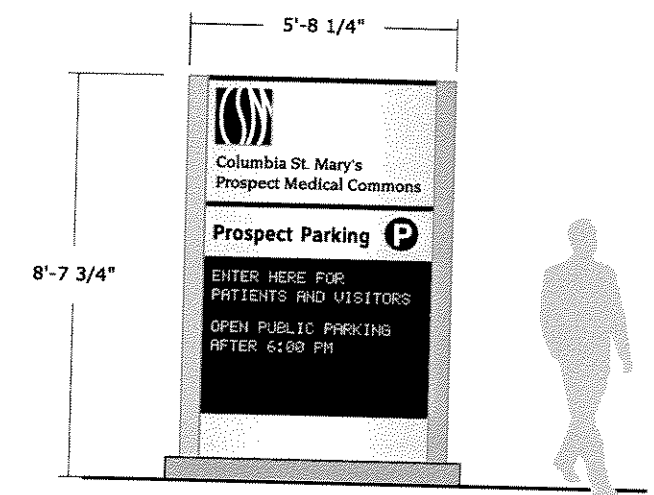
PARKING GARAGE (SEE A0 DRAWING SERIES)

**Prospect Medical Commons**  
Exterior Wayfinding



Sign Cabinet - aluminum fabricated with internal illumination. White acrylic sign faces with opaque black copy and translucent red vinyl. White and red to glow at night. Overall thickness to be 7" with a 2" projected parking "P" symbol. Illumination to be T12 HO fluorescent lamps.

Clearance Bar - PVC tube painted red with reflective vinyl copy and stripes. Supported from the bottom of the sign cabinet using aircraft cable.



Sign Cabinet - aluminum fabricated with internal illumination. White acrylic sign faces with opaque black copy and translucent red vinyl. White and red to glow at night. Overall thickness to be 7". Illumination to be T12 HO fluorescent lamps.

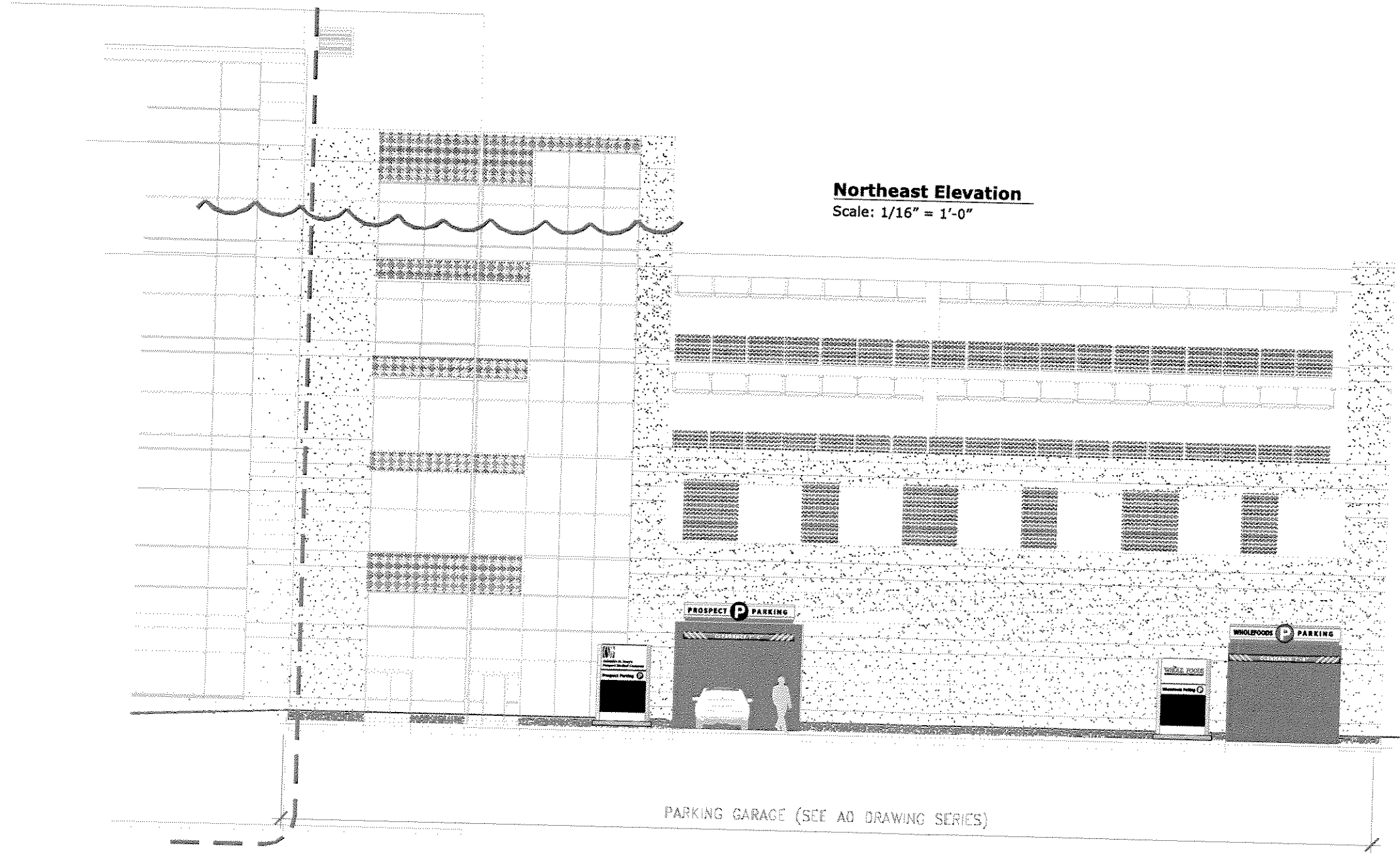
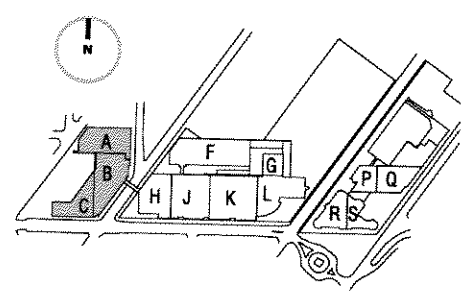
Changeable Message Board - Amber LED message boards with three sections for two-line messages.

Release	Date	Notes
1	03.21.06	Preliminary Design
2	06.08.06	FOR BID

Key to Symbols and Colors

- 1 White
- 2 Burgundy PMS 194
- 3 Black
- 4 Champagne (Anodize)
- 5 Light Stainless Steel

Computer Files



**Northeast Elevation**  
Scale: 1/16" = 1'-0"

Master Signage Program

**Columbia St. Mary's**  
*A Passion for Patient Care*  
Milwaukee, WI

HELLMUTH, OBATA + KASSABAUM, INC.

**hok**  
ARCHITECTURE, ENGINEERING, PLANNING,  
INTERIORS, GRAPHICS, CONSULTING

30 West Monroe, Suite 1500, Chicago, IL 60603  
Voice: 312.782.1000  
Fax: 312.782.6727  
Internet: <http://www.hok.com>






**corbin**  
**Corbin Design**  
109 East Front 304  
Traverse City, MI 49684  
231 947.1236



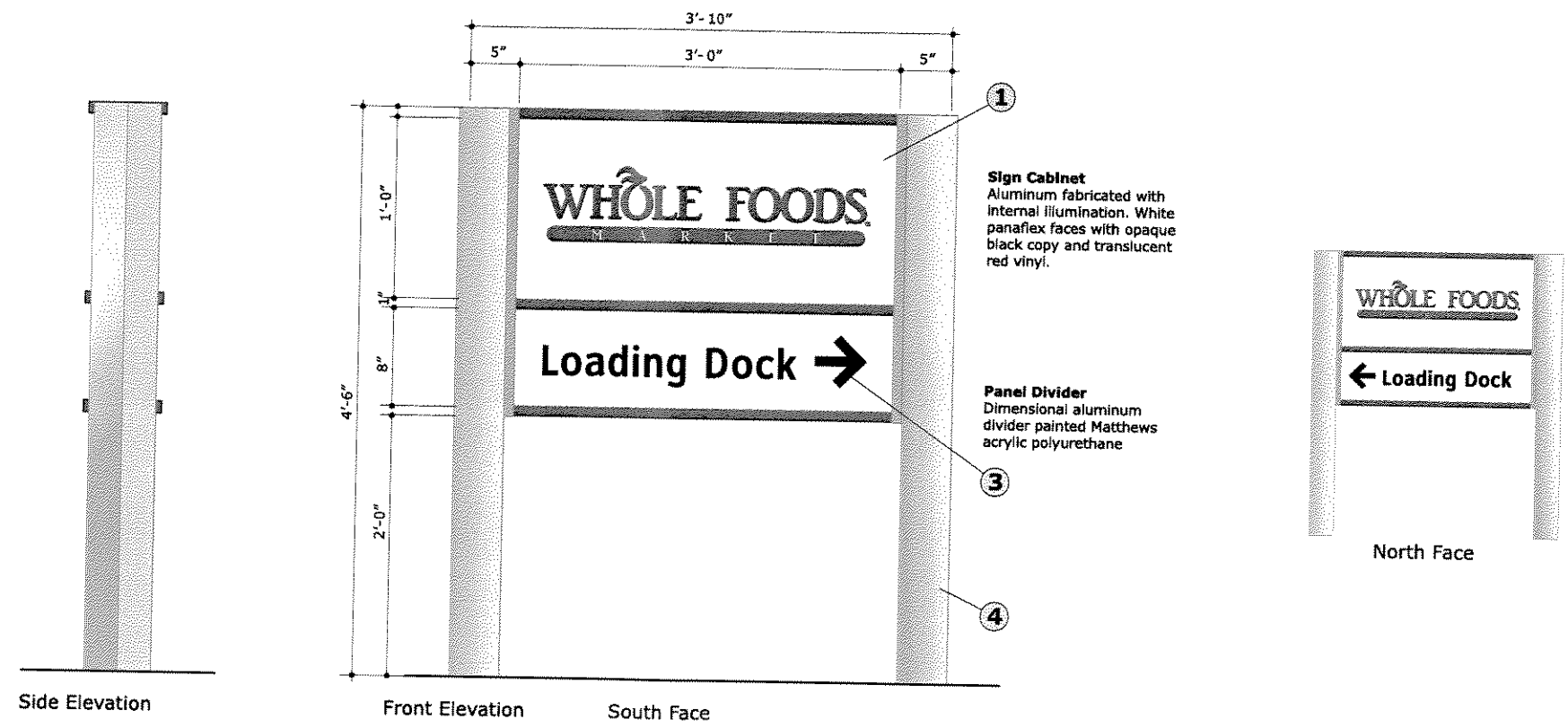
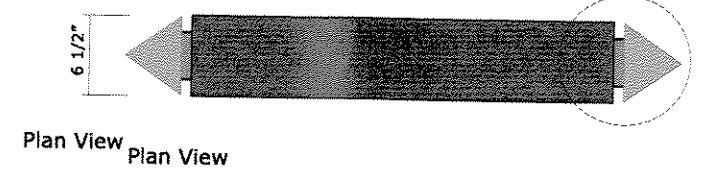
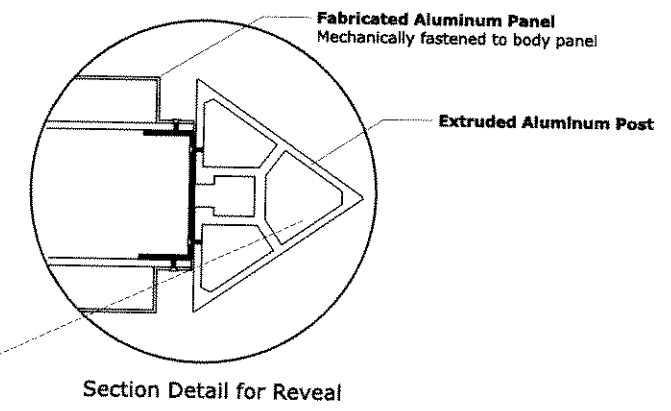
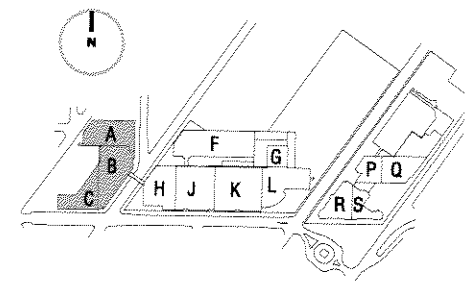
Prospect Medical Commons  
Exterior Wayfinding

Release	Date	Notes
1	04.10.06	Preliminary Design
2	06.08.06	FOR BID

Key to Symbols and Colors

-  1 White
-  2 Burgundy PMS 194
-  3 Black
-  4 Champagne (Anodize)
-  5 Light Stainless Steel

Compass Plan



**24** Gxc-5 Secondary Guide Sign (small)  
Scale: 3/4" = 1'-0"

Master Signage Program

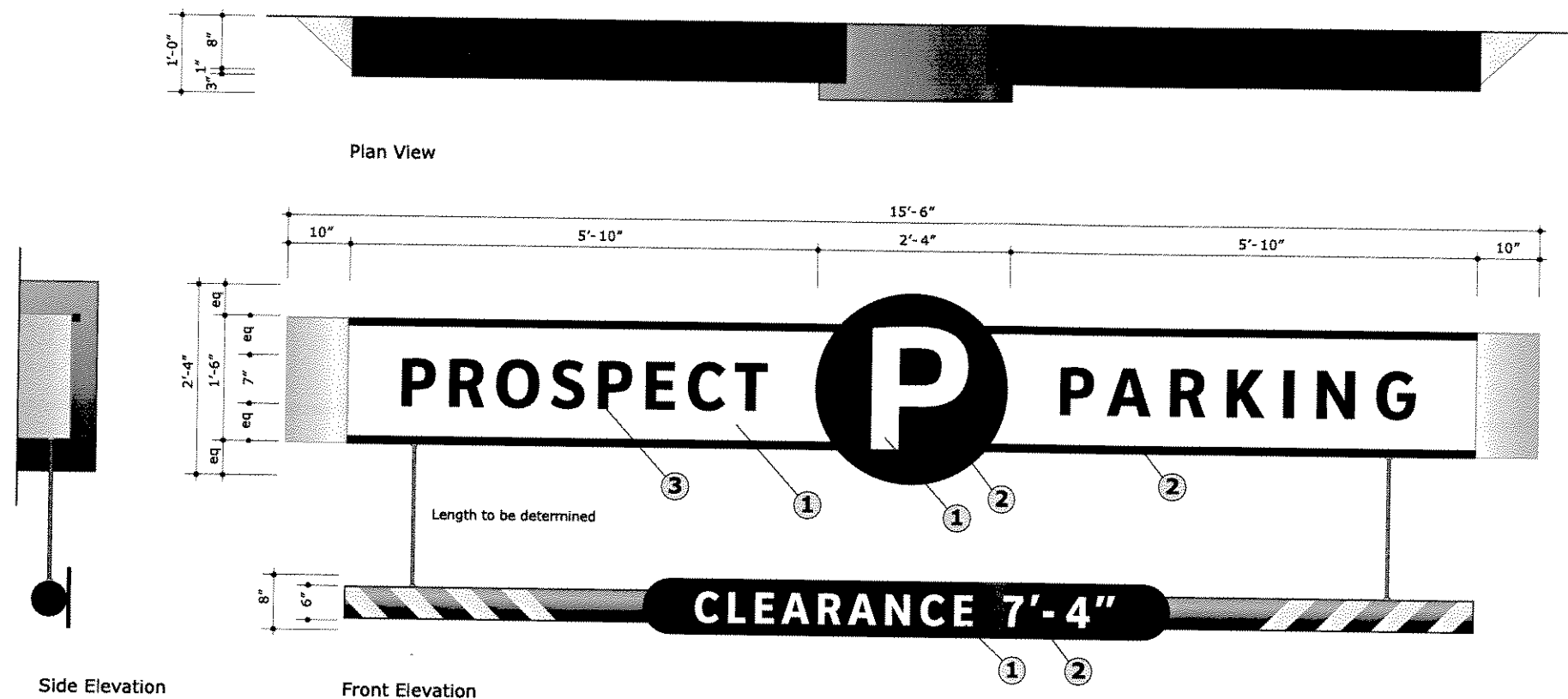
 **Columbia St. Mary's**  
A Passion for Patient Care<sup>SM</sup>  
Milwaukee, WI

HELLMUTH, OBATA + KASSABAUM, INC.

 **h+k**  
ARCHITECTURE, ENGINEERING, PLANNING,  
INTERIORS, GRAPHICS, CONSULTING

30 West Monroe, Suite 1000, Chicago, IL 60603  
Voice: 312.782.1000  
Fax: 312.782.6727  
Internet: <http://www.hok.com>

  
**corbin**  
Corbin Design  
109 East Front 304  
Traverse City, MI 49684  
231 947.1236



Sign Cabinet - Fabricated aluminum with internal illumination. White acrylic sign faces with opaque black copy and translucent red vinyl. (White and red to glow at night)  
Illumination to be T12 HO fluorescent lamps.

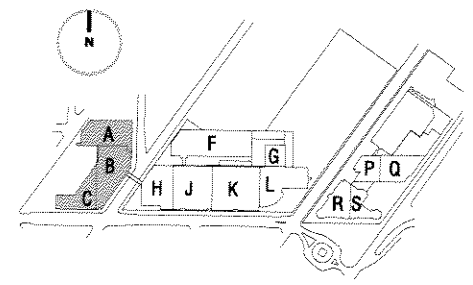
Clearance Bar - 6" PVC tube with concealed end caps. Painted red with reflective vinyl graphics. Suspended from the bottom of the sign cabinet using stainless steel aircraft cable and hardware.

Release	Date	Notes
1	04.10.06	Preliminary Design
2	06.08.06	FOR BID

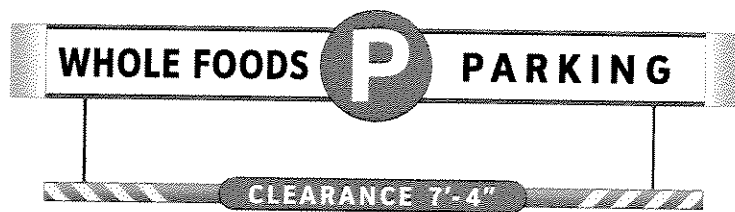
Key to Symbols and Colors

- 1 White
- 2 Burgundy PMS 194
- 3 Black
- 4 Champagne (Anodize)
- 5 Light Stainless Steel

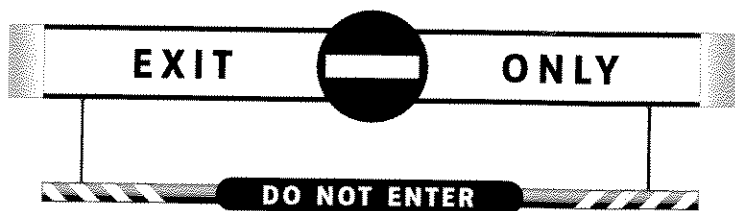
Campus Plan



**17** Ixc-5 Parking Entrance Identification  
Scale: 1/2" = 1'-0"



**15 28** Ixc-5 Parking Entrance Identification  
Scale: 1/4" = 1'-0"



**26 27** Ixc-5 Parking Entrance Identification  
Scale: 1/4" = 1'-0"



**25** Ixc-5 Parking Entrance Identification  
Scale: 1/4" = 1'-0"

Master Signage Program

**Columbia St. Mary's**  
A Passion for Patient Care...  
Milwaukee, WI

HELLMUTH, OBATA + KASSABAUM, INC.






**h+k**  
ARCHITECTURE, ENGINEERING, PLANNING,  
INTERIORS, GRAPHICS, CONSULTING

30 West Monroe, Suite 1500, Chicago, IL 60603  
Voice: 312.782.1000  
Fax: 312.782.6797  
Internet: <http://www.hok.com>

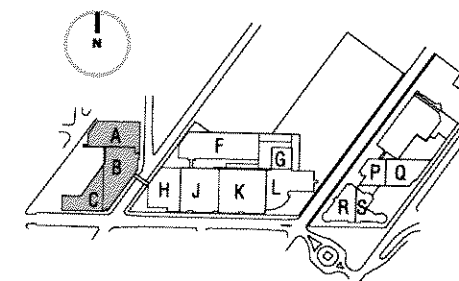
**corbin**  
Corbin Design  
109 East Front 304  
Traverse City, MI 49684  
231 947.1236

Release	Date	Notes
1	04.10.06	Preliminary Design

Key to Symbols and Colors

-  1 White
-  2 Burgundy PMS 194
-  3 Black
-  4 Champagne (Anodize)
-  5 Light Stainless Steel

Campus Plan



Master Signage Program



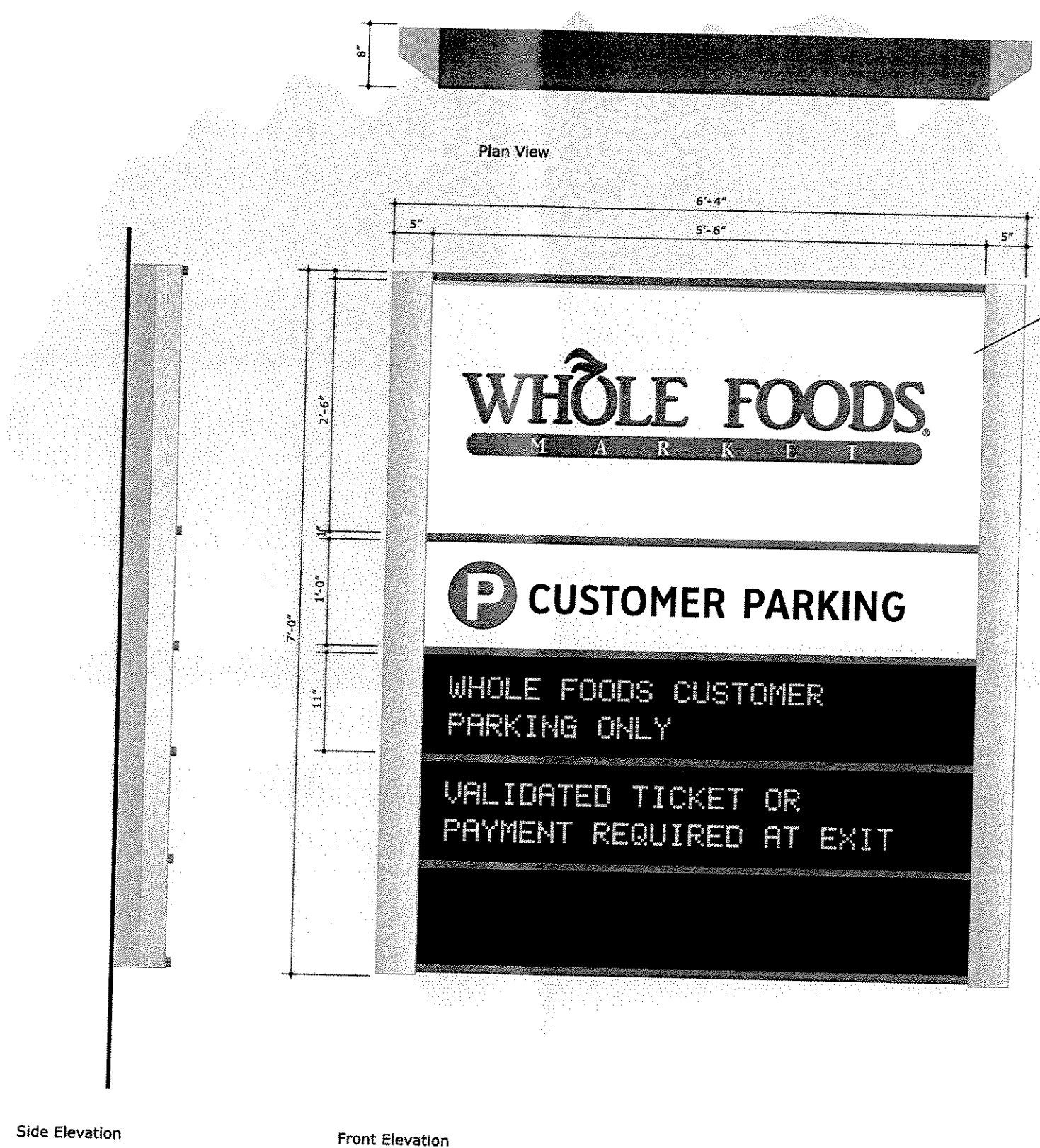
HELLMUTH, OBATA + KASSABAUM, INC.



30 West Monroe, Suite 1500, Chicago, IL 60603  
 Voice: 312.782.1000  
 Fax: 312.782.6727  
 Internet: http://www.hok.com

*Corbin*  
 corbin

Corbin Design  
 109 East Front 304  
 Traverse City, MI 49684  
 231 947.1236



**Sign Cabinet**  
 Aluminum fabricated with internal illumination. White panaflex faces with opaque black copy and translucent red vinyl. White and red to glow at night. Illumination to be T12 HO fluorescent lamps.

**Panel Divider**  
 Dimensional aluminum divider painted Matthews acrylic polyurethane

**Changeable Message Board**  
 Amber LED message boards with three sections for two-line messages of 2.1" tall letters

Quantity 2:  
 Daktronics 1000 Series  
 7.62 mm Monochrome  
 11"H x 5'-6"W x 7"D

**Fill Panel**  
 Aluminum panel painted satin black.

Side Elevation

Front Elevation

**29** Parking Identification w/ Message BD (wall)  
 Scale: 3/4" = 1'-0"



**Building Elevation**

Not to scale

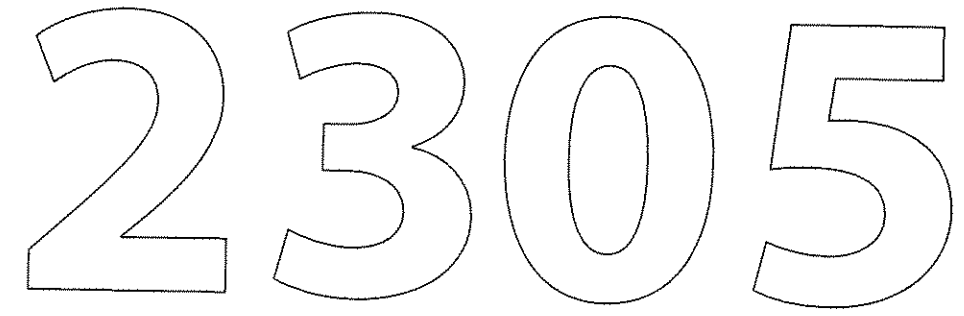
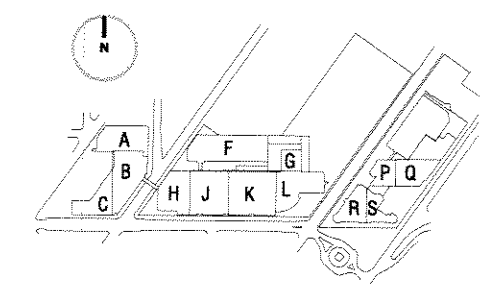
Exact Mounting location and height to be determine on site

Release	Date	Notes
1	04.10.06	Preliminary Plan
2	06.08.06	FOR BID
3	07.05.06	REVISIONS

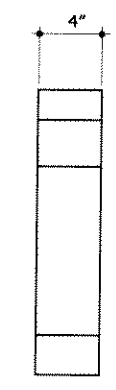
Key to Symbols and Colors

- 1 White
- 2 Burgundy PMS 194
- 3 Black
- 4 Champagne (Anodize)
- 5 Light Stainless Steel

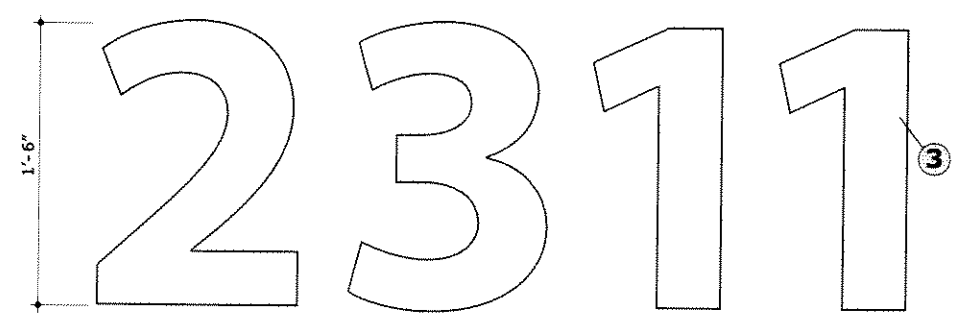
Context Plan



**Front Elevation**

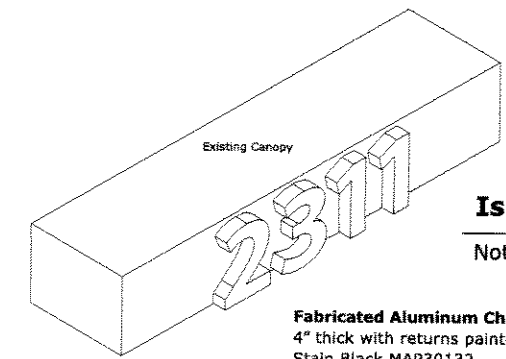


**Side Elevation**



**Front Elevation**

**21b Ixc-7 Building Address Numbers**  
Scale: 1" = 1'-0"



**Isometric View**

Not to scale

**Fabricated Aluminum Channel Letters**  
4" thick with returns painted to Matthews  
Stain Black MAP30132

Mechanically mounted to canopy

**21a Ixc-7 Building Address Numbers**  
Scale: 1" = 1'-0"

**Columbia St. Mary's**  
A Passion for Patient Care.  
Milwaukee, WI

HELLMUTH, OBATA + KASSABAUM, INC.

**h+k**  
ARCHITECTURE, ENGINEERING, PLANNING,  
INTERIORS, GRAPHICS, CONSULTING

30 West Monroe, Suite 1500, Chicago, IL 60603  
Voice: 312.783.1000  
Fax: 312.782.4797  
Internet: <http://www.h+k.com>

**corbin**  
Corbin Design  
109 East Front 304  
Traverse City, MI 49684  
231.947.1236

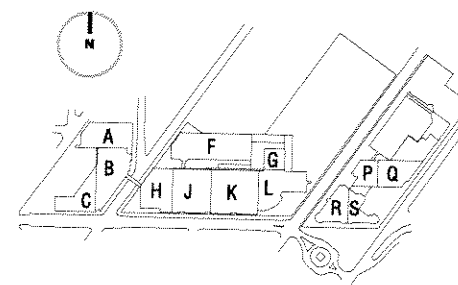


Release	Date	Notes
1	04.10.06	Preliminary Plan
2	06.08.06	FOR BID
3	07.05.06	REVISIONS

Key to Symbols and Colors

- 1 White
- 2 Burgundy PMS 194
- 3 Black
- 4 Champagne
- 5 Light Stainless Steel

Campus Plan



Master Signage Program



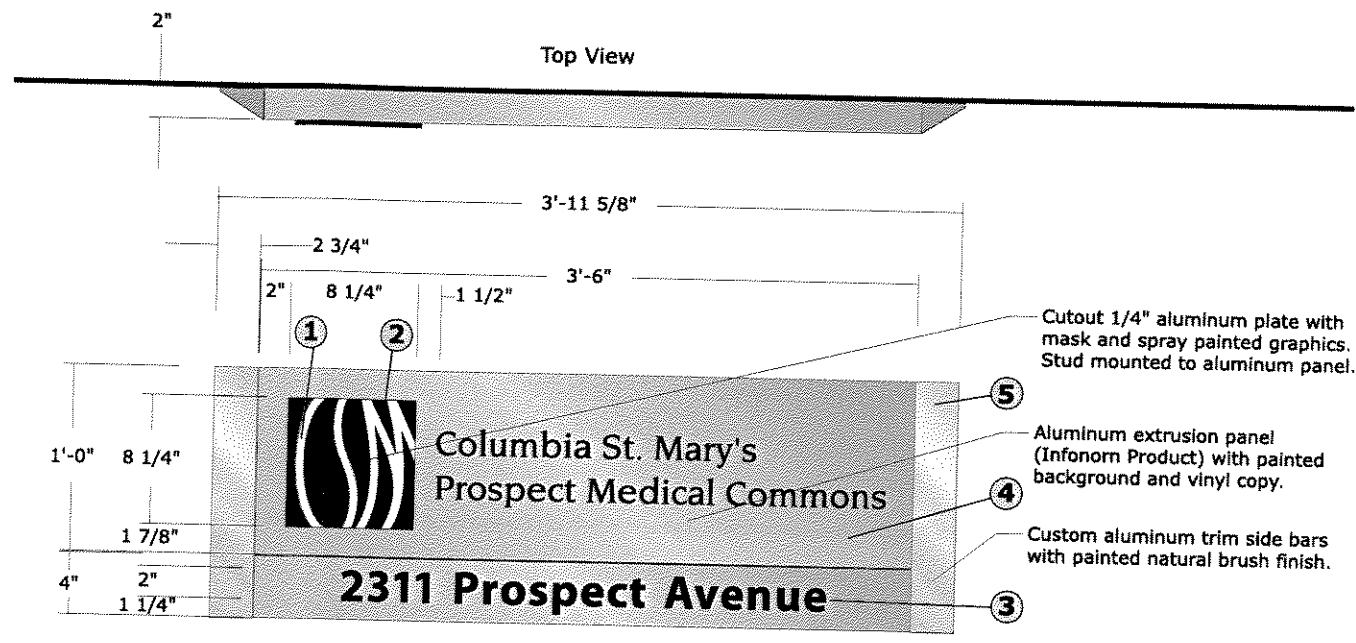
HELLMUTH, OBATA + KASSABAUM, INC.



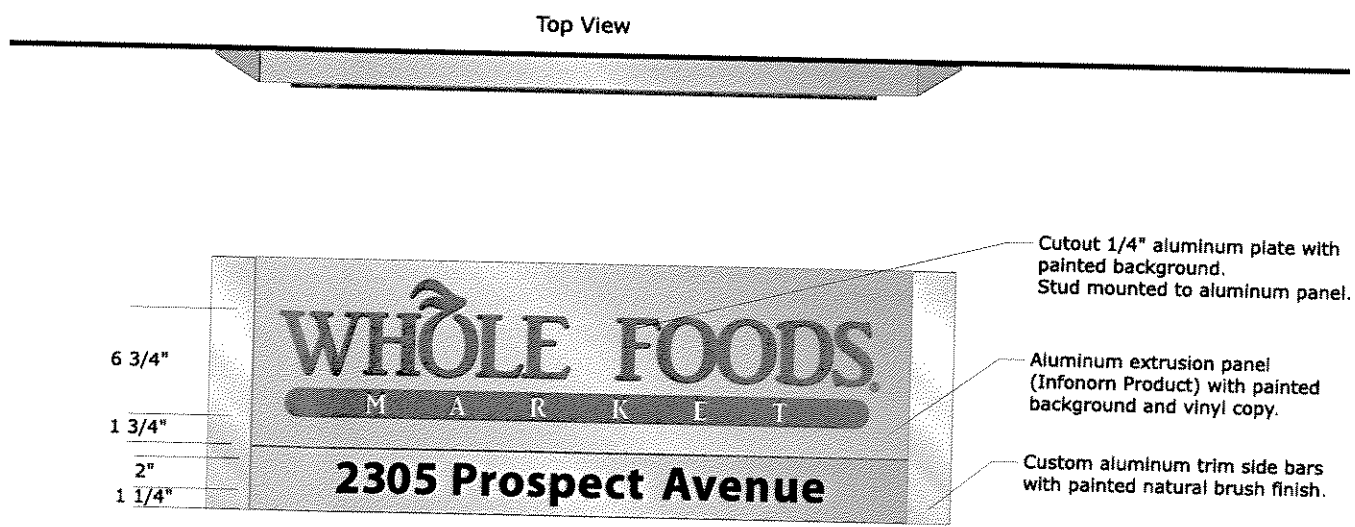
30 West Monroe, Suite 1500, Chicago, IL 60603  
 Voice: 312.782.1000  
 Fax: 312.782.8727  
 Internet: http://www.hok.com

*Corbin*  
**corbin**

**Corbin Design**  
 109 East Front 304  
 Traverse City, MI 49684  
 231 947.1236

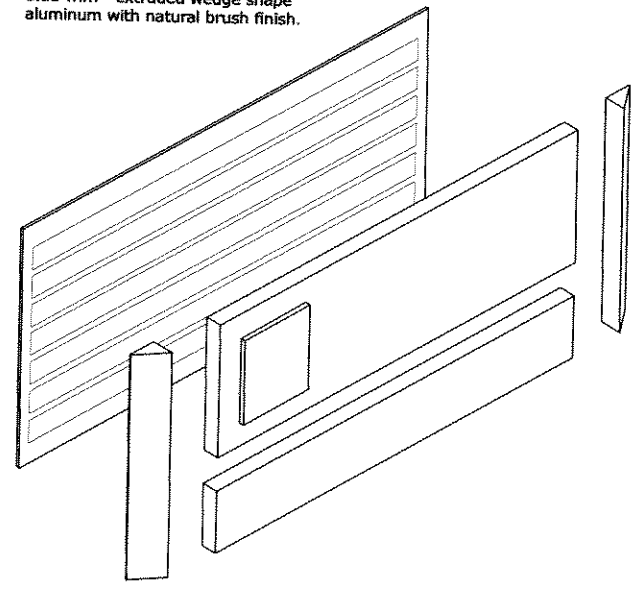


**20a** Ixc-8 Building Entrance ID (wall)  
 Scale: 1" = 1'-0"

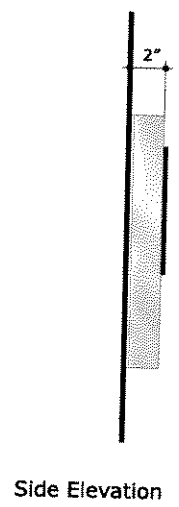


**20b** Ixc-8 Building Entrance ID (wall)  
 Scale: 1" = 1'-0"

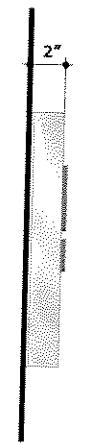
Logo - cutout aluminum 1/4" thick with mask and spray painted graphics.  
 Panels - flat 1/8" aluminum with painted-background with silk-screened copy (Infonorm product)  
 Side Trim - extruded wedge shape aluminum with natural brush finish.



**Isometric View**  
 Not to scale



Side Elevation



Side Elevation