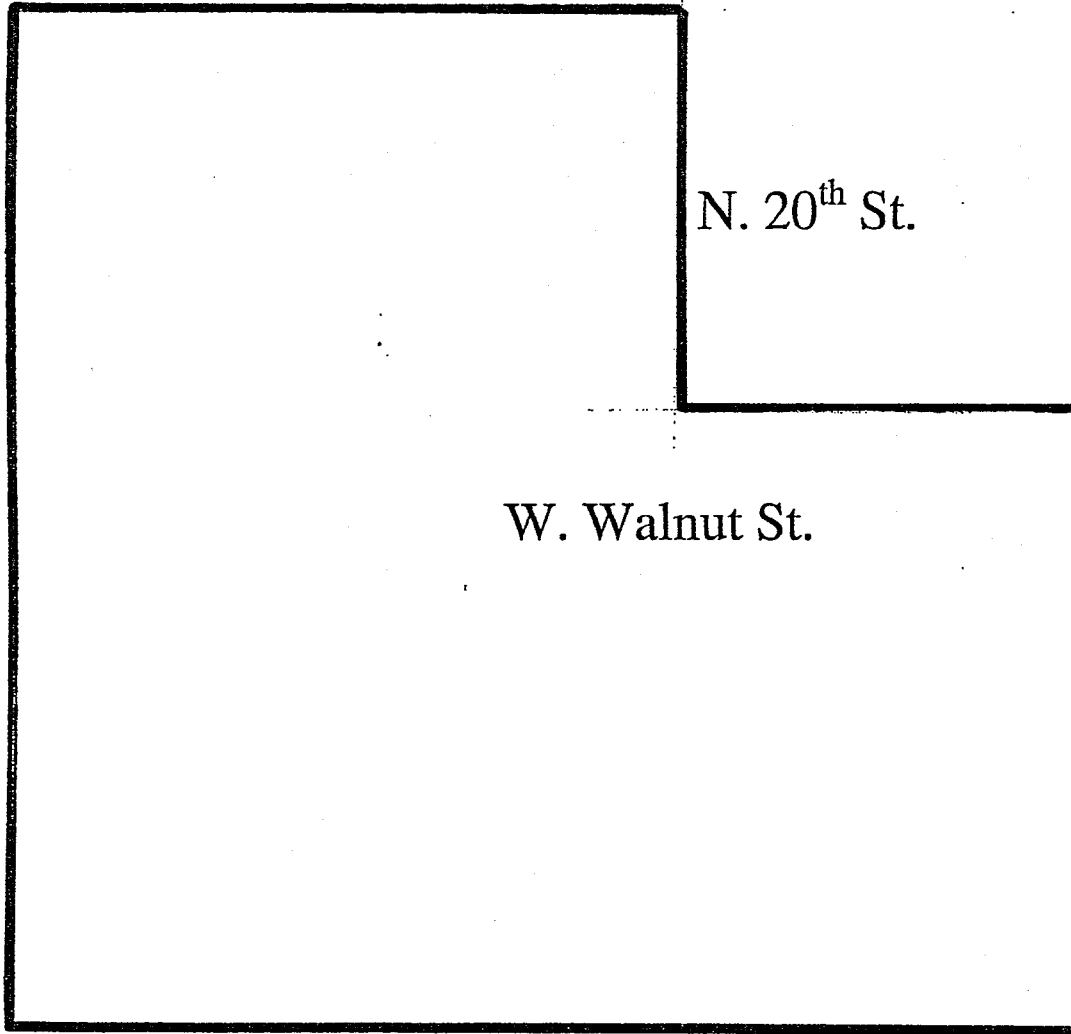


**Year 2004 Funding Recommendations - Job Placement**

Total Available: \$42,510	Program Design Specifications (50 pts)	Accomplishments (25 pts)	Experience (25 pts)	Final Score	CBGA Recommendation	Comments
Organization	Clients served/ Outreach Activity Description, goals/objectives, timeline, method, budget Activity Workplan Outcome measurement		Experience, staff expertise Financial, org, admin, management			
Arms Around Amani					Ineligible	Ineligible due to incomplete application. Application did not meet rfp specifications and did not include required budget, revenue, expense forms
Milwaukee Careers Cooperative	49	25	25	99	Fund at \$42,510	Good outreach to residents of NSP 12; agency in close proximity to NSP 12 residents; good method of approach; will use ongoing employer contacts to obtain job orders; program matches clients with jobs based on skills; has exceeded goals; experienced staff
Milwaukee Community Service Corps.	33	25	9	70	\$0	Application is for jt&p rather than job placement; budget page lists only \$7,500 (instead of \$42,510). Job placement numbers very low(10 job placements). Method of approach good.
Northeast Milwaukee Industrial Development Corporation (NMIDC)	44	25	25	94	\$0	Good method of approach with Stepping Stones Lifeskills program; good followup & retention & tracking services; location of agency is not in close proximity to NSP Area 12;
Wisconsin Correctional Service	35	25	25	85	\$0	Good program yet it is targeted to ex-offenders and those on parole and probation only. No access to program for NSP 12 residents unless they are or have been in the prison system. RFP requires access for all

NSP 12

W. North Ave.



N. 27<sup>TH</sup> ST.

N. 20<sup>th</sup> St.

W. Walnut St.

N. 12<sup>th</sup> St.

W. State St.