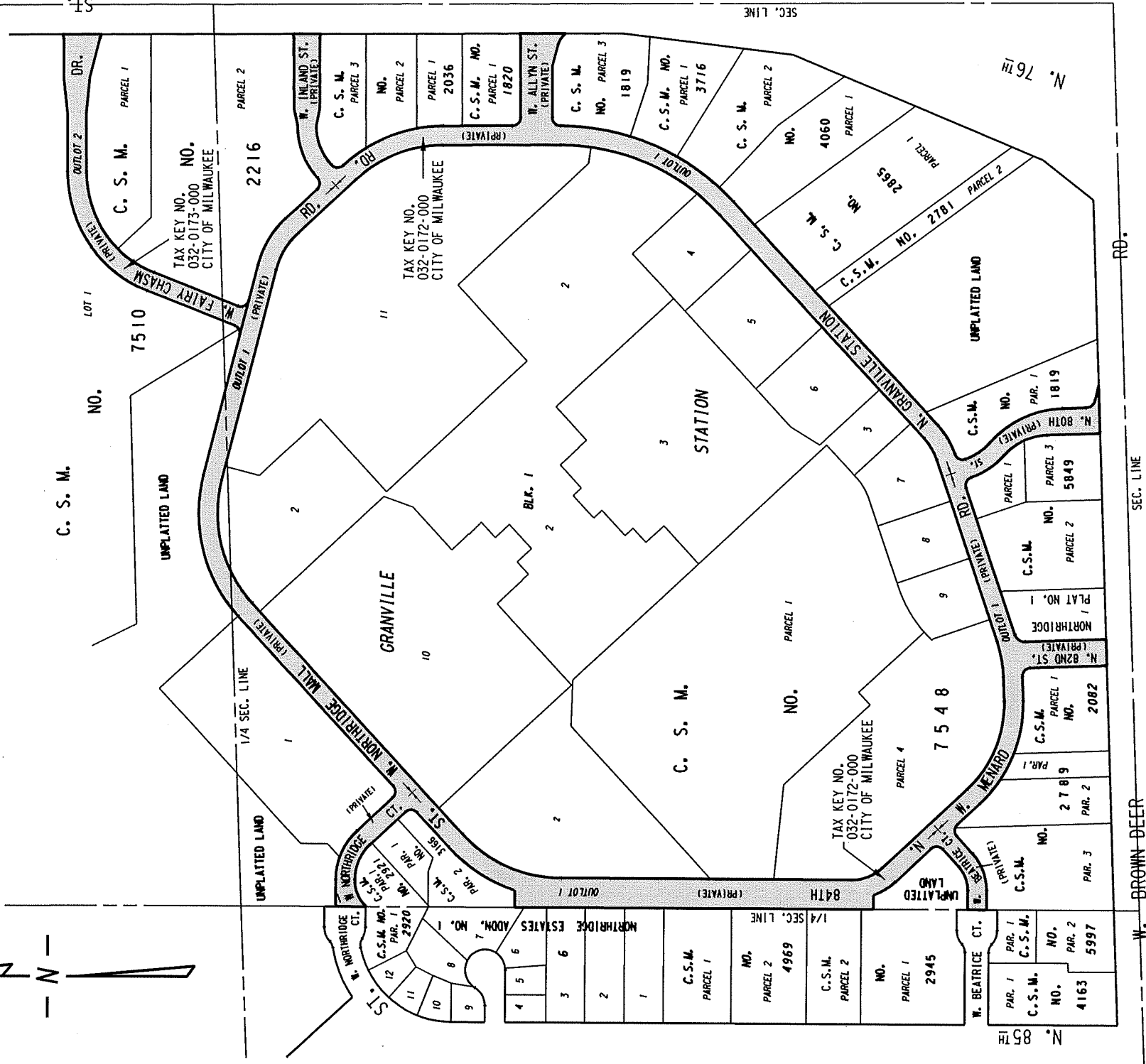
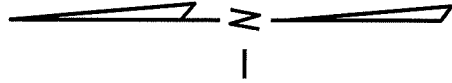


EXHIBIT B

N.E. 1/4 SEC. 4, T.8N., R.2E.

6



S.E. 1/4 SEC. 4, T.8N., R.2E.

32

CITY-OWNED LAND PROPOSED TO BE DEDICATED FOR PUBLIC STREET PURPOSES

FILE NO. 190513 INFRASTRUCTURE SERVICES DIVISION

MILWAUKEE, WISCONSIN

ASSIGNED TO: W. FUCHS
 DRAWN BY: W.F.
 PROJECT/GRANT NO.: WK52360090
 APPROVED BY:

CH'K'D. BY: W. FUCHS
 DATE: JULY 16, 2019
 SCALE: 1" = 400'

W. Fuchs

W. Fuchs