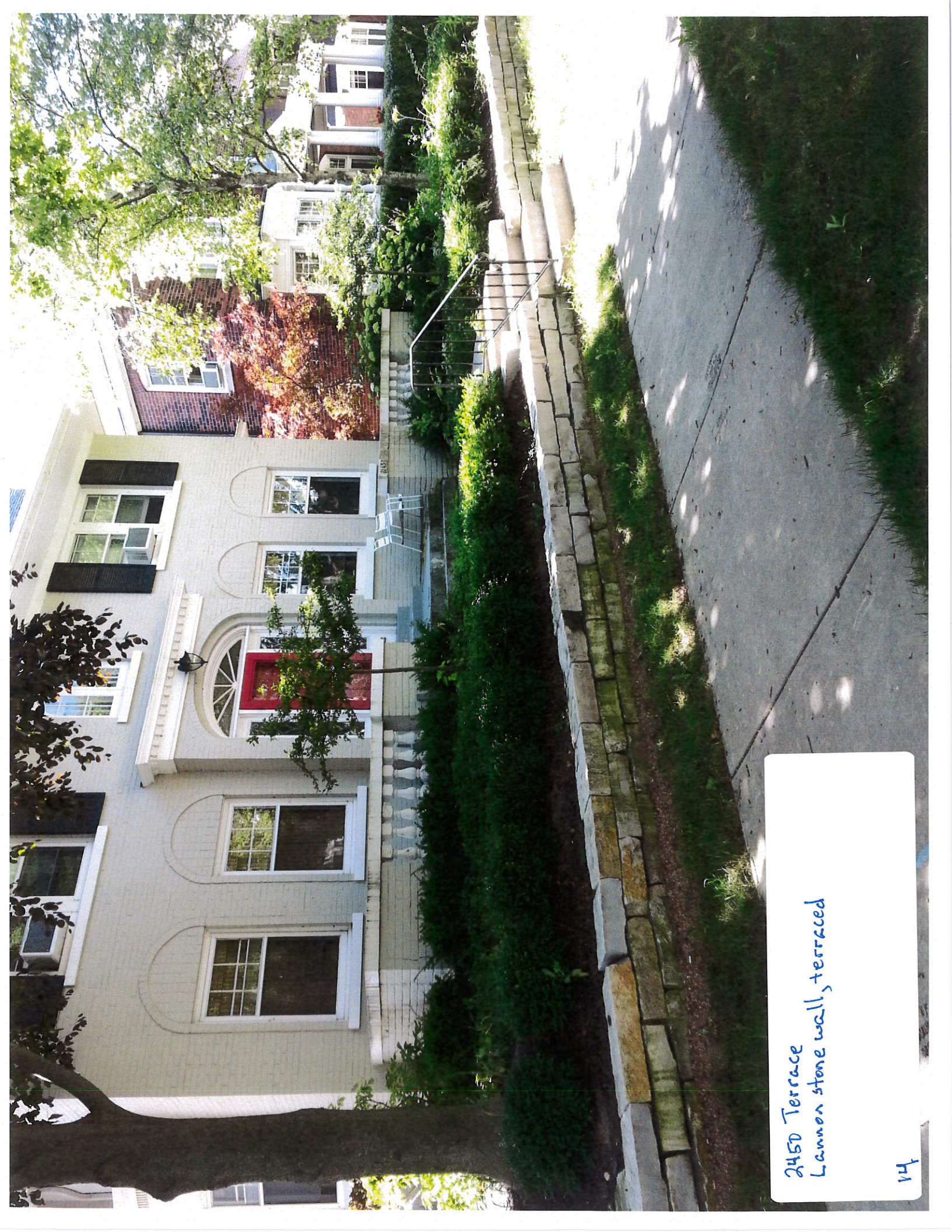




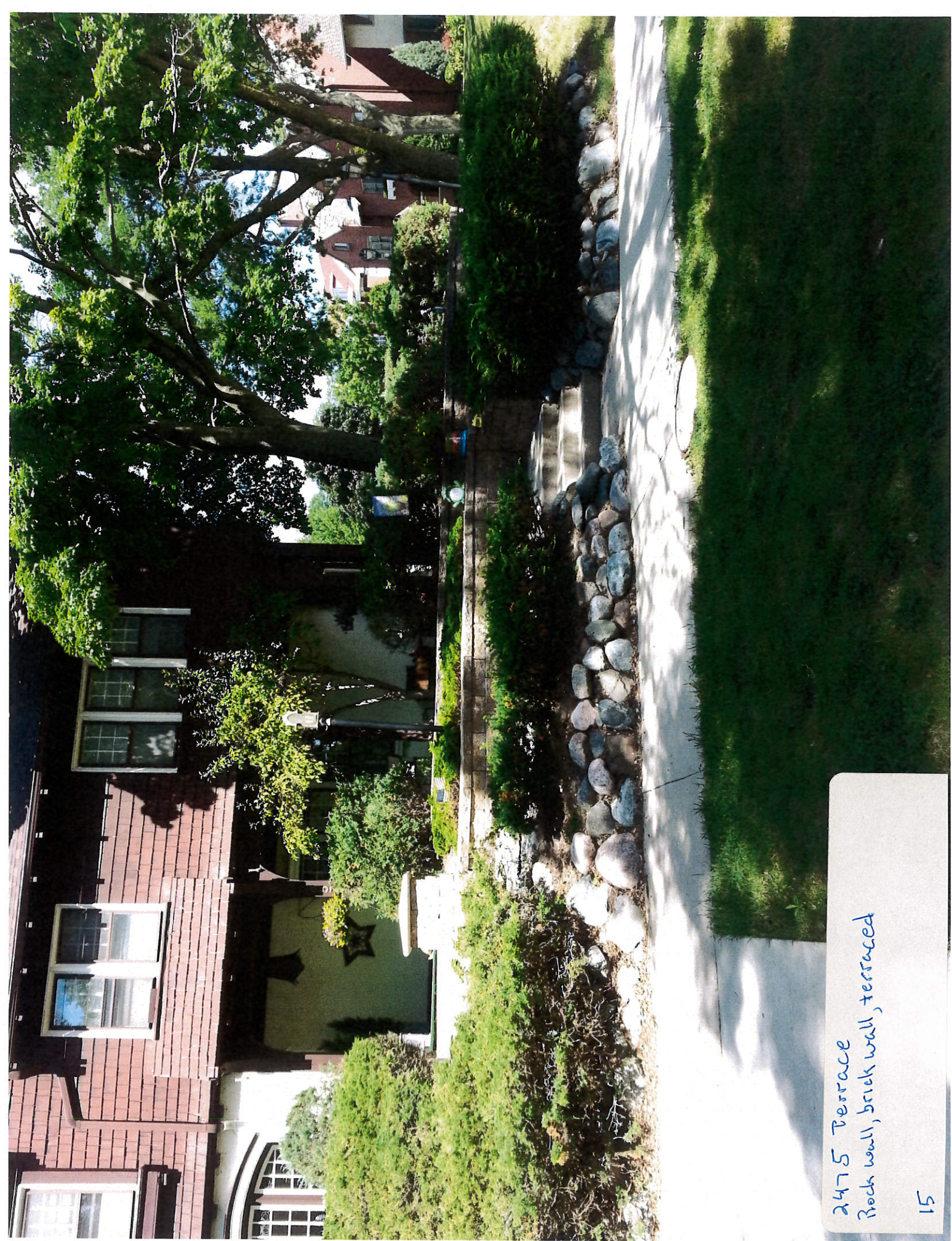
2635 Wahl, neighbor  
Blue stone steps, walkway  
Front patio withannon stone wall (New)





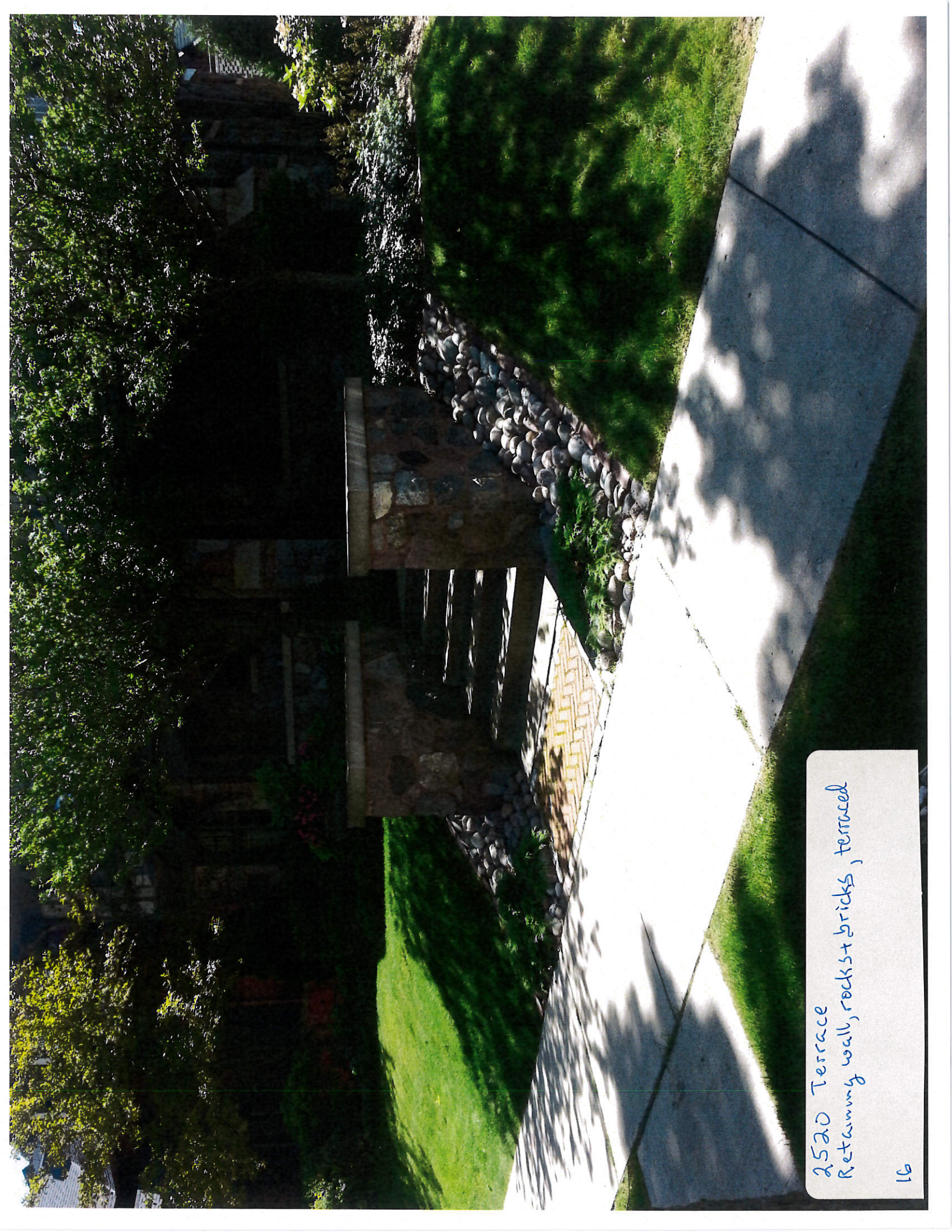
245D Terrace  
Lannon stone wall, terraced





2475 Terrace  
Rock wall, brick wall, terraced





2520 Terrace  
Retaining wall, rocks + bricks, terraced





2537 Terrace  
Brick retaining wall, terraced  
Flag pole





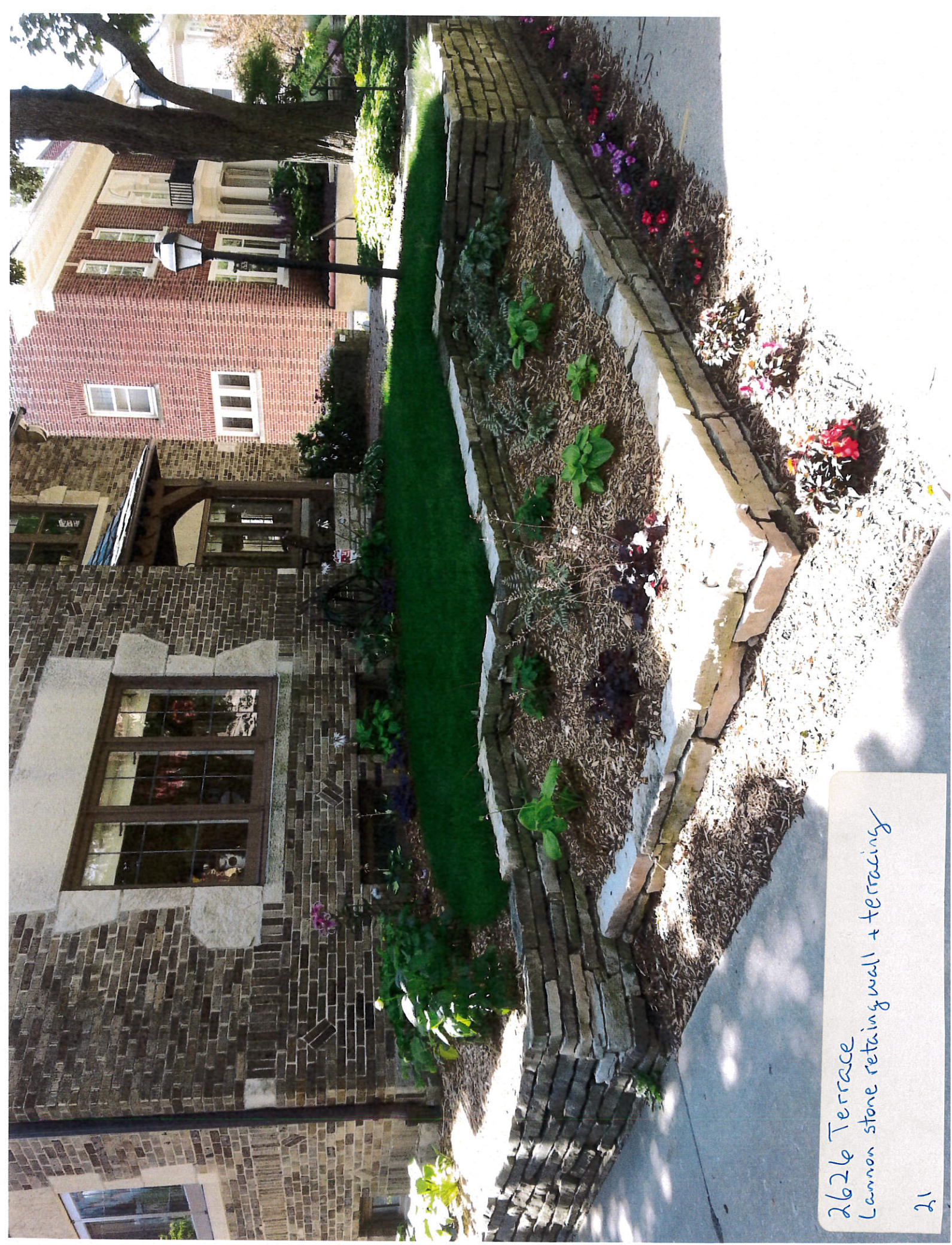
2571 Terrace  
Lannon stone retaining wall,  
Brick walkway, set back?  
18





2018 Terrace  
Lannon stone wall/terracing





2626 Terrace  
Common stone retaining wall + terracing



Lake Park  
Land Use  
Changes



2623 Wch1, across from Leswing's  
Rain Garden



Light House 2650 wahl  
Brick driveway, Rain Garden





2559 wahl  
Blue stone steps, no railing





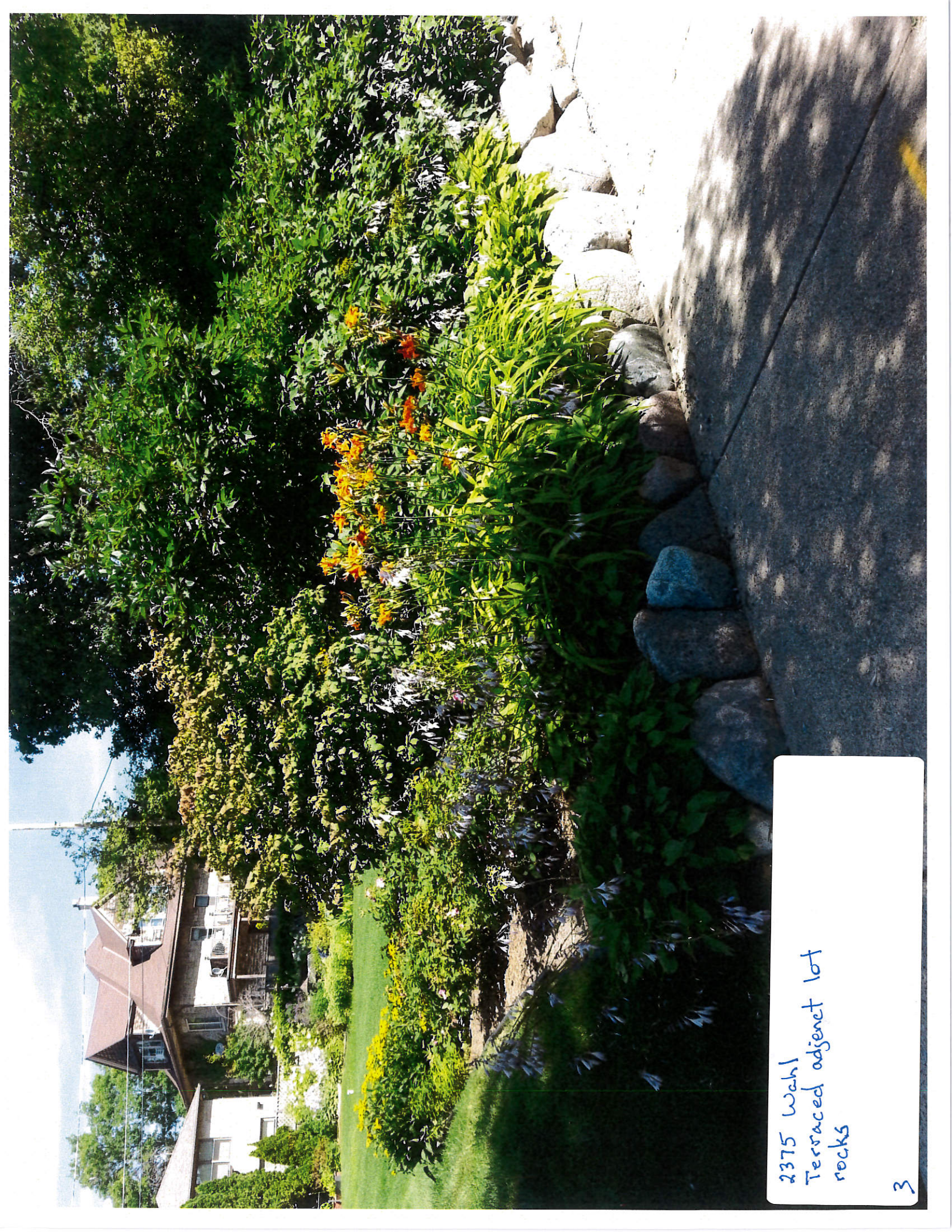
2551 Wahl  
Lannon stone wall, new front patio,  
slate front walkway





2535 Wahl  
Terraced Lannon stone wall





2375 Wahl  
Terraced adjacent lot  
rocks



District examples  
Conforming?  
Terraced  
Walls  
Step Railings



2375 Wahl  
Tiered retaining wall rocks



Katz rentals  
Land use  
changes



25241 Lake Katz rental  
Victory Garden plots (8)





2524 Lake, Katz rental  
Victory Garden plots (8)





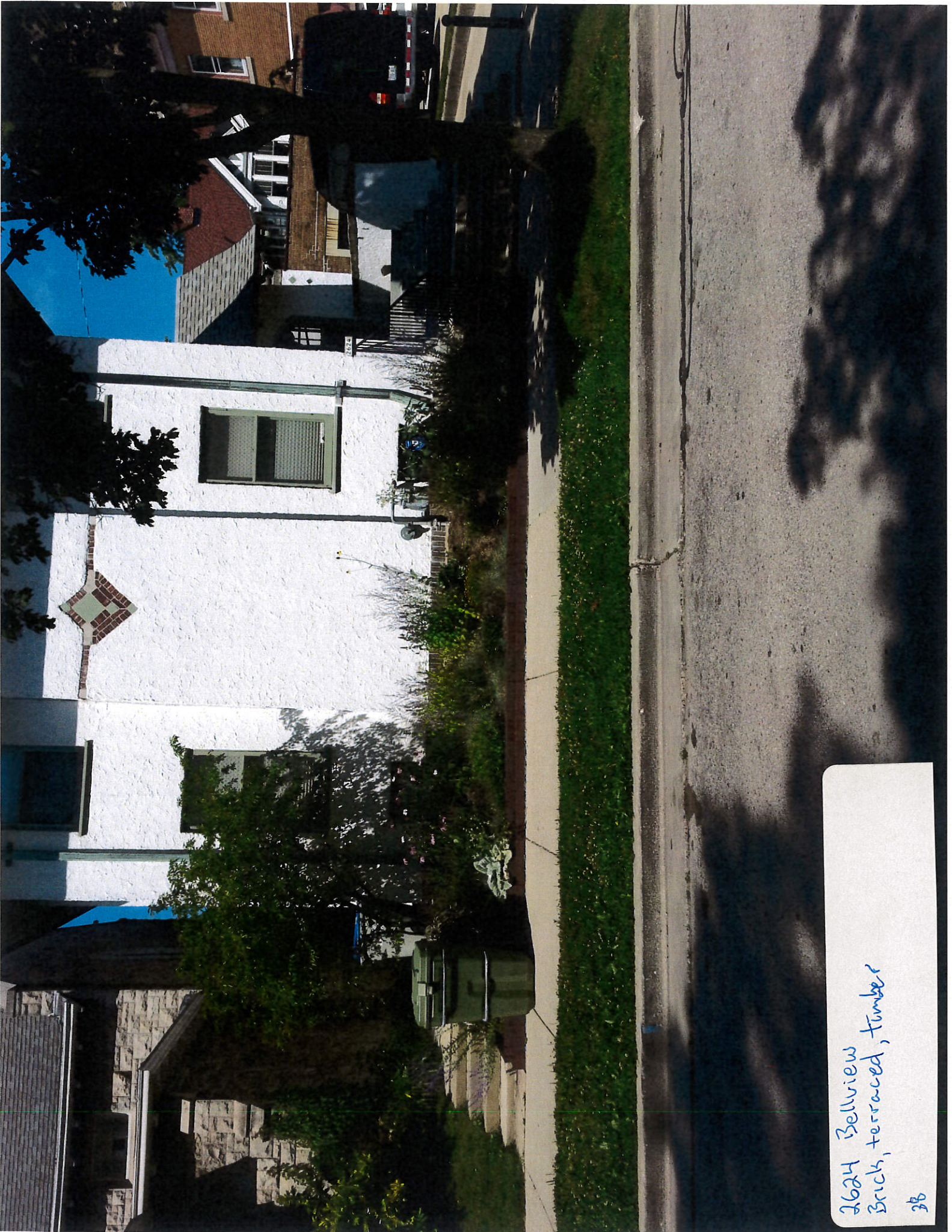
2905 Bradford  
Brick steps + pillars, terraced  
41





2710 Bellview  
Brick wall, Lannon stone terraced





2624 Bellview  
Brick, terraced, timber





2720 Bradford  
Cement, Brick, Blue stone, terraced  
No railing  
36





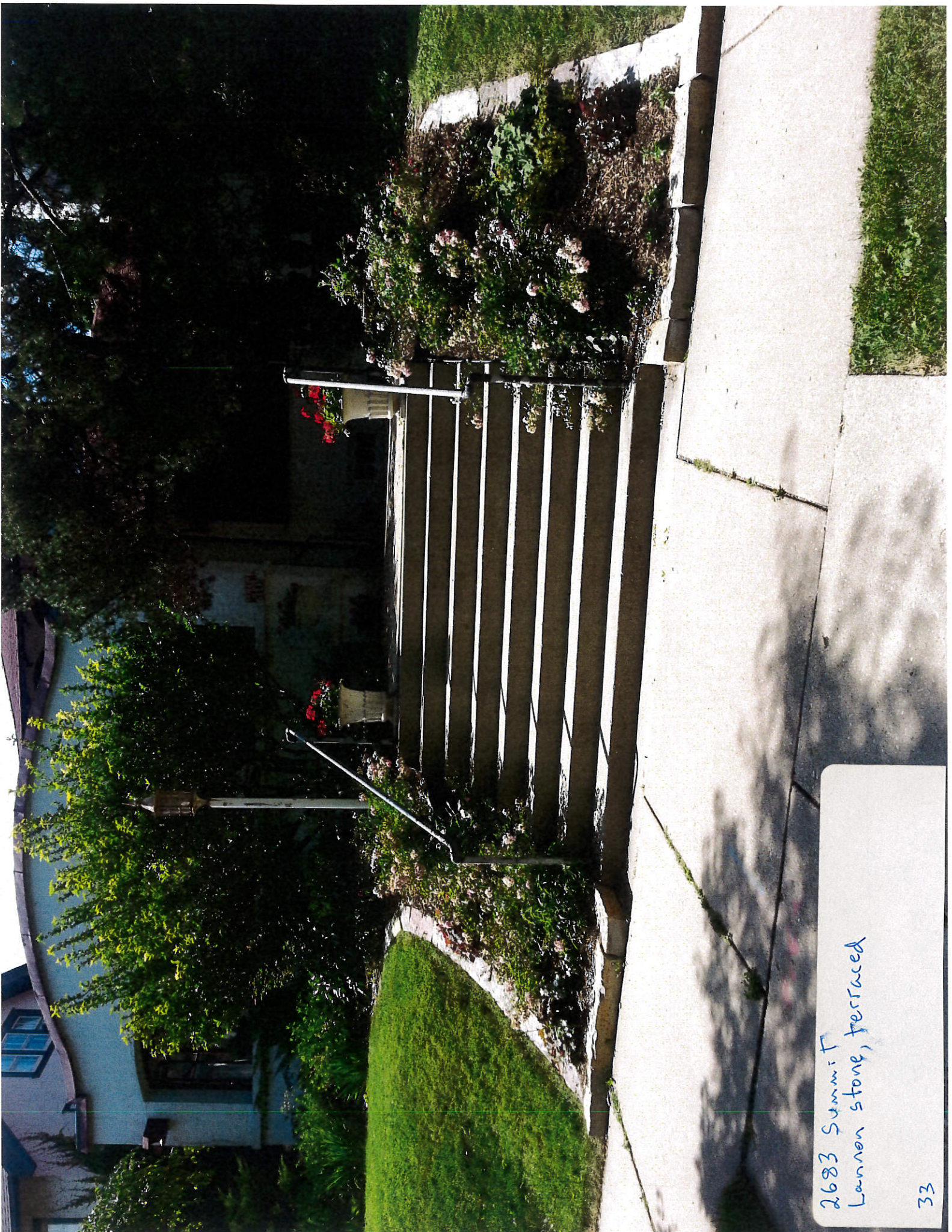
Park + Lake  
Iron fence + wood fence.  
Get back ?





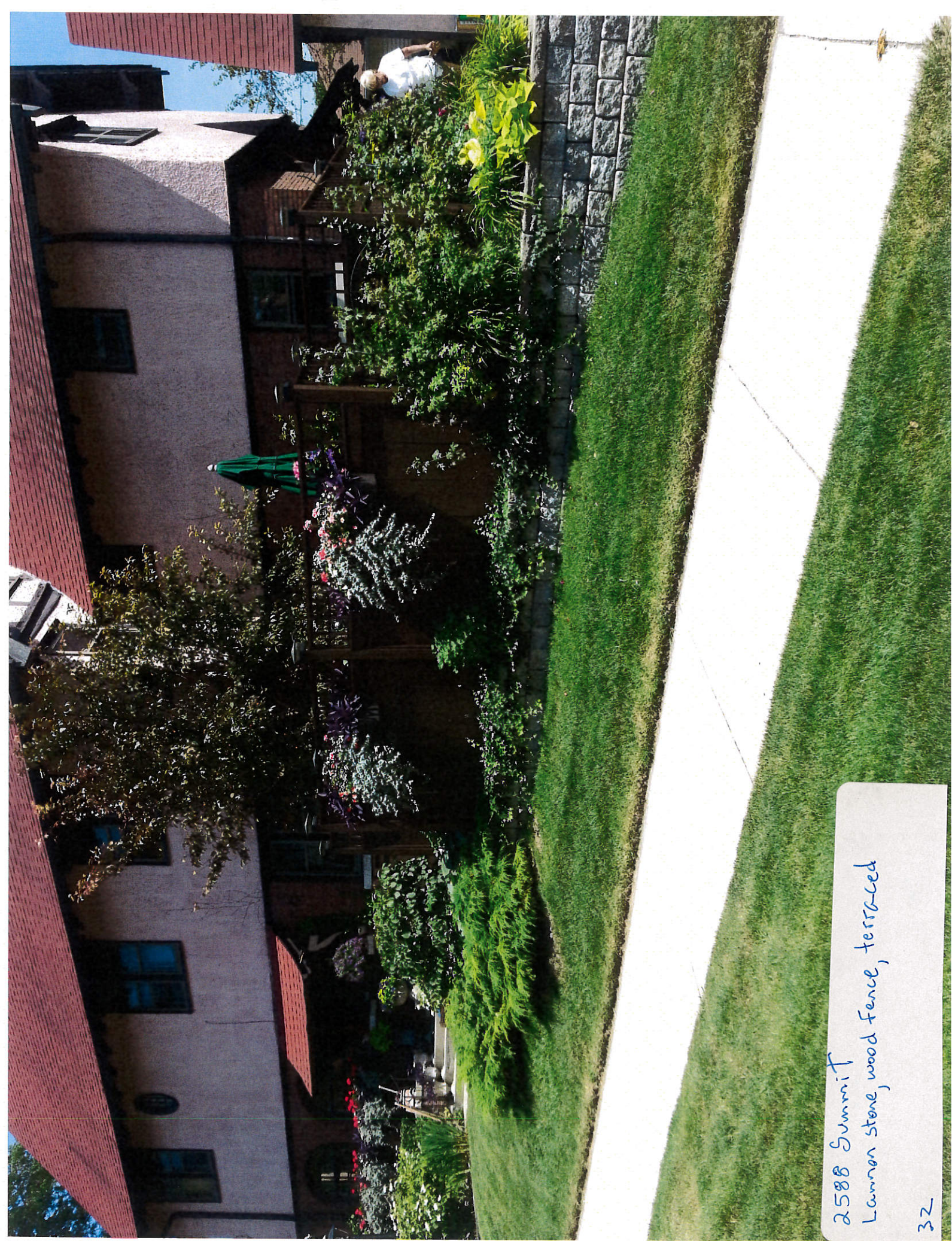
2887 Park  
Lannon stone wall, retaining of set back  
NO Foliage  
34





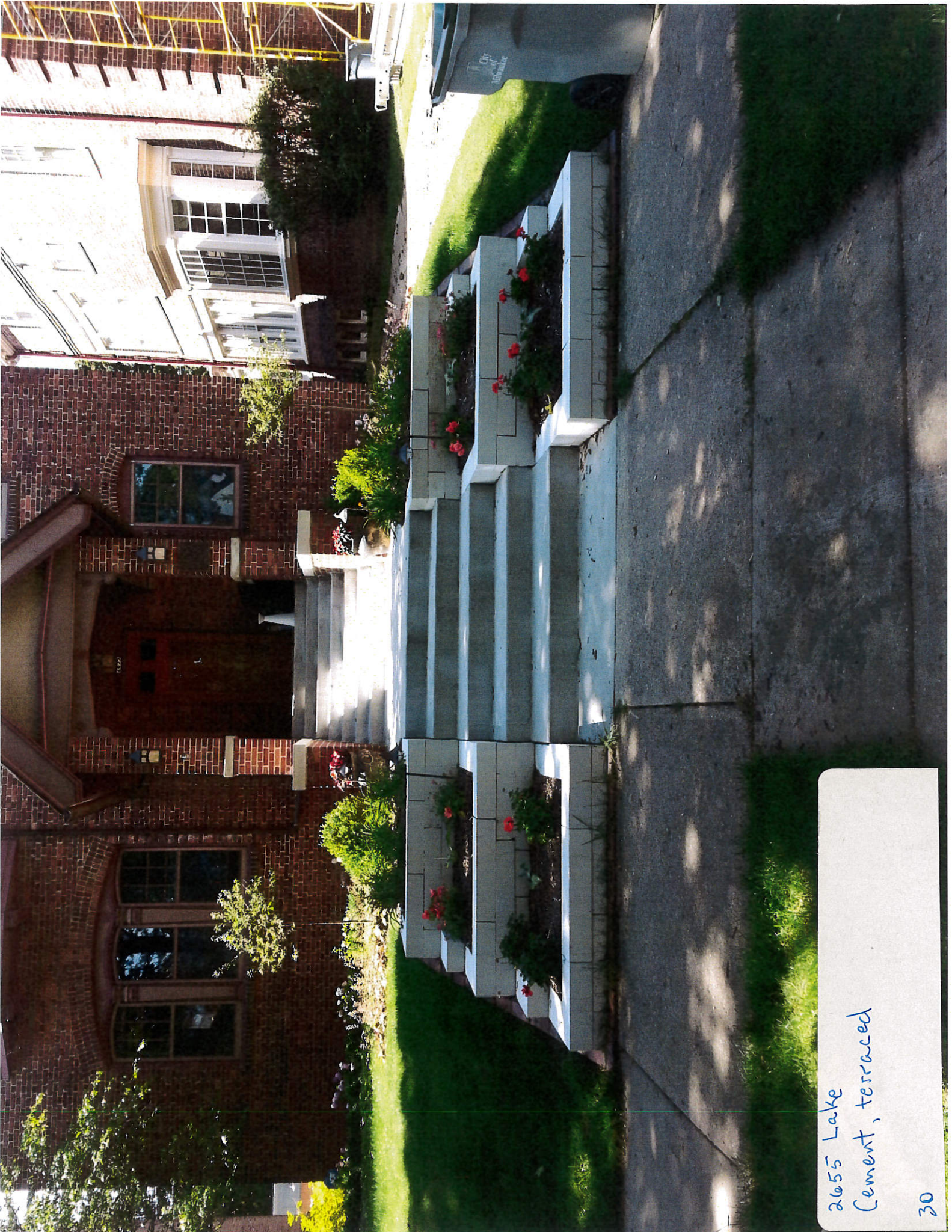
2683 Summit  
Lannon stone, terraced





2588 Summit  
Lannon stone, wood fence, terraced





2655 Lake  
Cement, terraced





ST. ROBERT  
SCHOOL  
LAWNS & PLANTS  
Life Smart  
erobert.org

2641 Lake  
Lannon stone, terraced

089





2625 Lake  
Lannon stone, terraced





2623 Lake  
Lannon Stone, Terraced





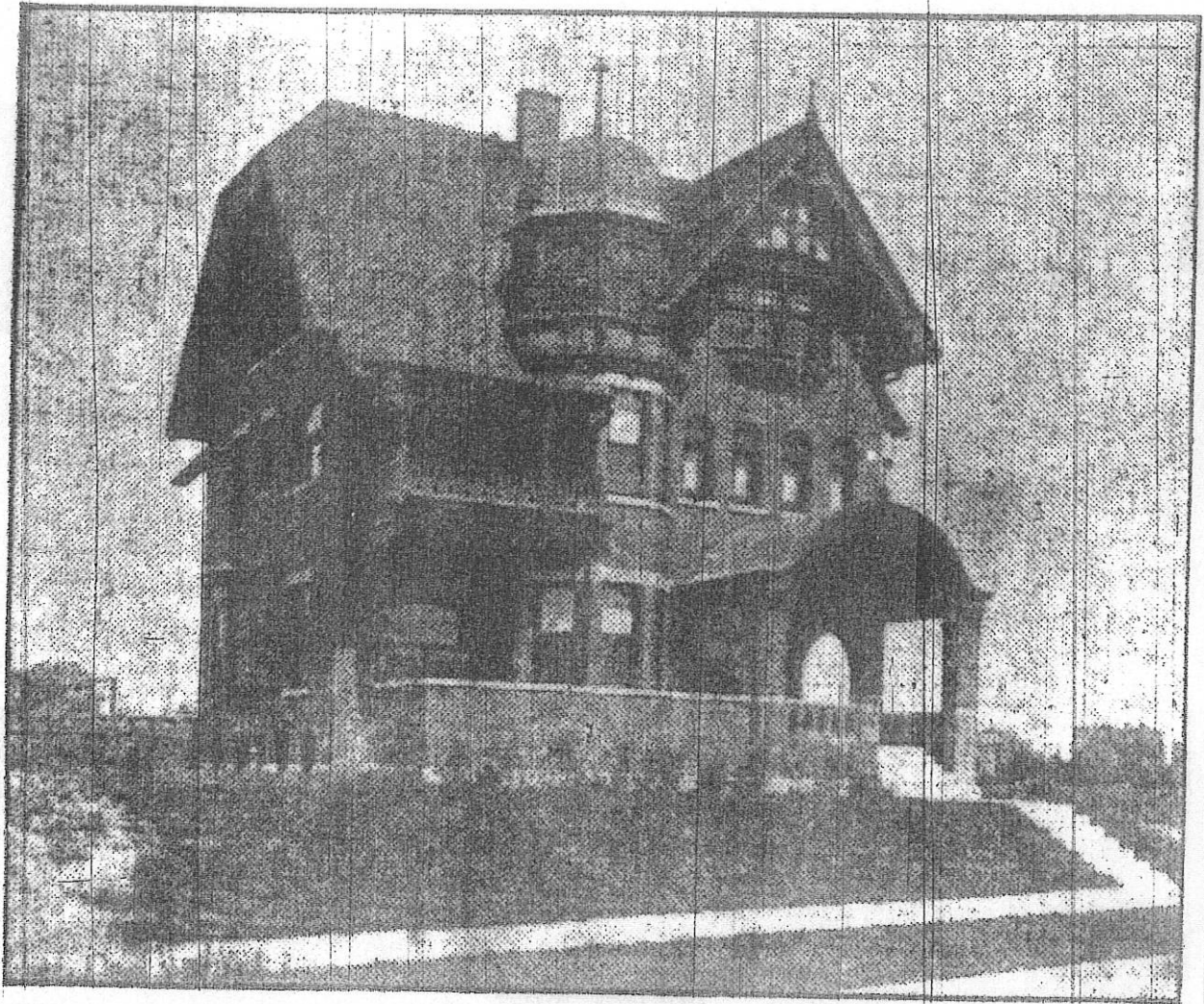
2604 Lake  
Massive brick wall, setback+height?





2604 Lake  
Lannon stone+brick  
Terraced  
25





# Wahl Avenue Residence

The owner of this most delightful homestead, overlooking the lake and commanding an entire view of bay in all directions,

## For Immediate Sale

will make to a purchaser a price secondary to the actual value. The interior is arranged and finished ideal in its modernity.

For particulars see

# Maynard & Picken, Agents

502-6 WELLS BUILDING.