

# City of Milwaukee



CITY OF  
**UMHLATHUZE**  
VISION INTO ACTION

## UMHLATHUZE MILWAUKEE SISTER CITY REPORT

June 21, 2016

# 0LAST PRESENTATION....WAY FORWARD

- 0 Prof Britz from UWM is planning to take a delegation to the University of Zululand in uMhlatuze.
- 0 Business Delegation around October 2015.



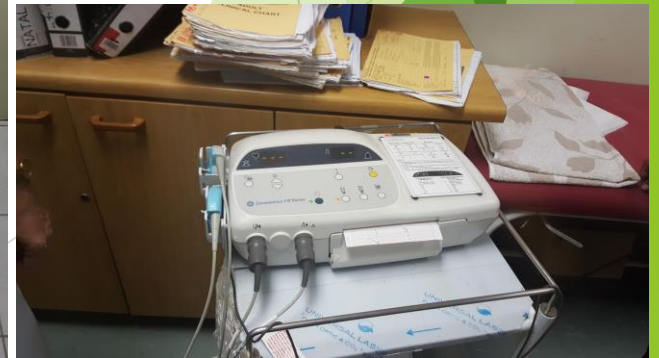
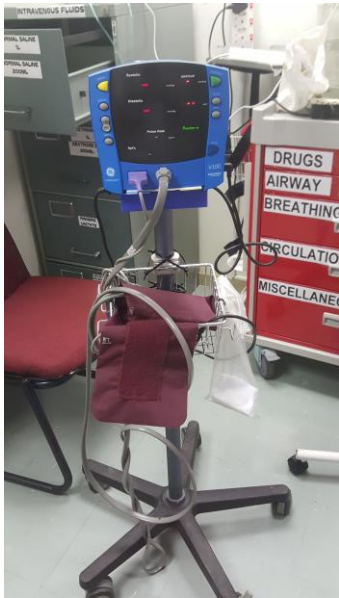
## University of Wisconsin Milwaukee (UWM) and University of Zululand (UNIZULU) Relationship

Presenters in the LIS Education session on September 8, 2016 at the University of Zululand Department of Information Studies 17th annual conference,

L-R: Chiku Mnubi-Mchombu, PhD (UniZulu), Coordinator/Senior Documentarist, Human Rights and Documentation Centre, Faculty of Law, University of Namibia, Shana Ponelis, PhD (UP), Assistant Professor, School of Information Studies, University of Wisconsin-Milwaukee, and Jaya Raju, PhD (UKZN), Associate Professor and Head of the Library and Information Studies Centre, University of Cape Town.



# Medical Equipment Bill and Melinda Gates Foundation \$30,000. value



## BUSINESS DELEGATION TO SOUTH AFRICA



8 businesses from Milwaukee and Chairperson of Sister Cities, Ald Joe Davis, Sr. attended a business delegation to South Africa in February 2016.

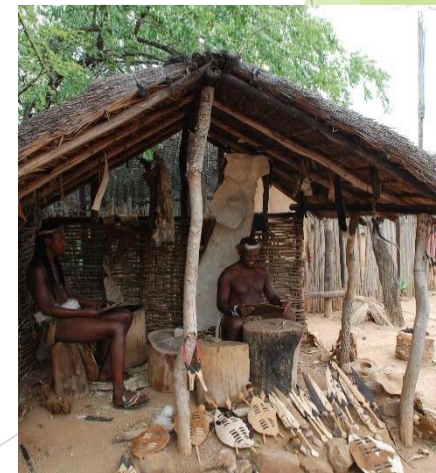
The delegation was supported by WEDC and M7.

The delegates visited 3 cities: Johannesburg, Durban and uMhlathuze. Businesses attended a seminar/marketplace organized by the Trade and Investment of KwaZulu Natal and a business dinner hosted by the Mayor of

# Richards Bay/ uMhlathuze | Naval Island



# Shakaland

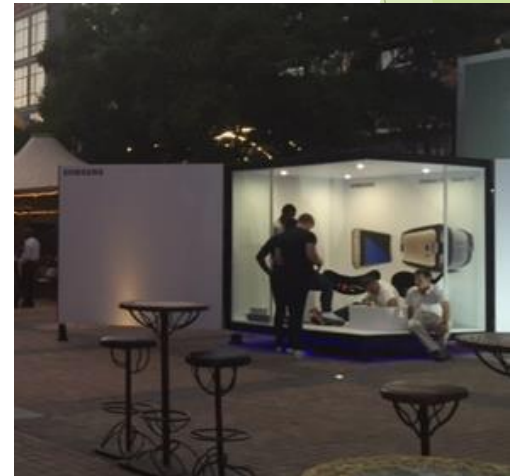
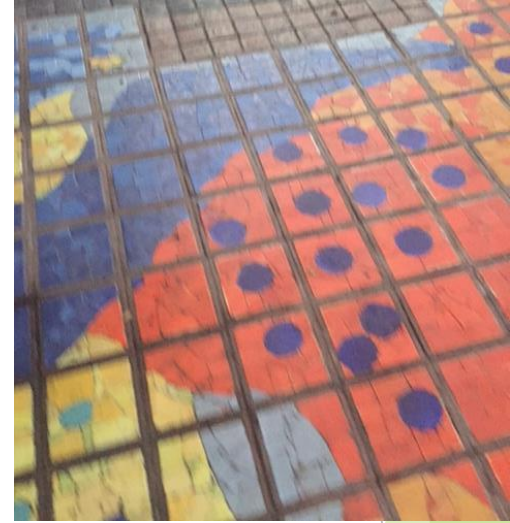


# Johannesburg/ Apartheid Museum

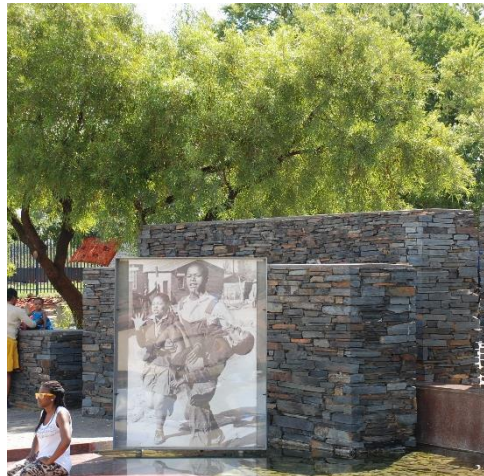




# Melrose Arch



# Soweto



# Sandton



## Milwaukee Business Owners





**Pan-African Community Association**

4063 N. 64<sup>th</sup> St. Unit A

Milwaukee, WI 53216

Tel.: 414-442-5864 – Fax: 414-535-8829

E-mail: [Fmebrahtu@panafricoma.org](mailto:Fmebrahtu@panafricoma.org) – [www.panafricoma.org](http://www.panafricoma.org)