



BLOCK 1 - MILWAUKEE ARENA DCD SUBMISSION

POPULOUS

HNTB



INDEX

A1- 1	INDEX
A1- 2	3D VIEW - ARENA DISTRICT AERIAL
A1- 3	VICINITY MAP
A1- 4	ALTA SURVEY
A1- 5	OVERALL SITE PLAN
A1- 6	ENLARGED SITE PLAN - 6TH & JUNEAU
A1- 7	ENLARGED SITE PLAN - 4TH & JUNEAU
A1- 8	ENLARGED SITE PLAN - 6TH & HIGHLAND
A1- 9	ENLARGED SITE PLAN - 4TH & HIGHLAND
A1- 10	OVERALL GRADING PLAN
A1- 11	OVERALL SITE EROSION CONTROL PLAN
A1- 12	EROSION CONTROL DETAILS
A1- 13	OVERALL UTILITY PLAN
A1- 14	OVERALL SITE CIRCULATION PLAN
A1- 15	NORTH ACTIVATION PLAN - JUNEAU
A1- 16	ENLARGED LANDSCAPE PLAN - 4TH & JUNEAU
A1- 17	ENLARGED LANDSCAPE PLAN - 4TH & HIGHLAND
A1- 18	ENLARGED LANDSCAPE PLAN - 6TH & HIGHLAND
A1- 19	ENLARGED LANDSCAPE PLAN - 6TH & JUNEAU
A1- 20	SITE LANDSCAPE DETAILS
A1- 21	SITE AREA LIGHTING - PHOTOMETRIC STUDY
A1- 22	SITE AREA LIGHTING - PRODUCT CUTSHEETS
A1- 23	SITE LANDSCAPE LIGHTING - LEGEND AND CUTSHEETS
A1- 24	3D VIEW - EAST PLAZA ON 4TH STREET VIEW WEST
A1- 25	3D VIEW - VIEW FROM HIGHLAND VIEW EAST
A1- 26	3D VIEW - VIEW FROM 4TH & JUNEAU VIEW SOUTH
A1- 27	3D VIEW - NORTHWEST ENTRANCE VIEW SOUTH
A1- 28	3D VIEW - VIEW FROM 6TH & JUNEAU VIEW SOUTH
A1- 29	ARENA ELEVATIONS - EAST / 4TH STREET
A1- 30	ARENA ELEVATIONS - NORTH / JUNEAU AVENUE
A1- 31	ARENA ELEVATIONS - WEST / 6TH STREET
A1- 32	ARENA ELEVATION - SOUTH / HIGHLAND AVENUE
A1- 33	SIGNAGE TYPES
A1- 34	SIGNAGE TYPES
A1- 35	SIGN LOCATION PLAN
A1- 36	SIGNAGE ELEVATION - EAST
A1- 37	SIGNAGE ELEVATION - SOUTH
A1- 38	SIGNAGE ELEVATION - WEST
A1- 39	SIGNAGE ELEVATION - NORTH
A1- 40	ROOF SIGNAGE
A1- 41	FAÇADE FEATURE LIGHTING CONCEPTS - EAST ELEVATION
A1- 42	FAÇADE FEATURE LIGHTING CONCEPTS - WEST ELEVATION
A1- 43	FAÇADE FEATURE LIGHTING CONCEPTS - SOUTH ELEVATION
A1- 44	FAÇADE FEATURE LIGHTING CONCEPTS - NORTH ELEVATION



MILWAUKEE ARENA
1111 N. 4TH STREET
MILWAUKEE WI

DPD SUBMITTAL

REVISIONS

NO.	DATE	DESCRIPTION
1	03.11.2017	REVISED
2	06.14.2017	REVISED
3	06.22.2017	REVISED



FILE NUMBER: 151653
ISSUE DATE: 05.09.2016

INDEX

POPULOUS HNTB eua

SHEET
A1- 1



MILWAUKEE ARENA
1111 N. 4TH STREET
MILWAUKEE WI

DPD SUBMITTAL

REVISIONS

NO.	DATE	DESCRIPTION
1	01.17.2016	REVISED
2	04.04.2016	REVISED
3	05.06.2016	REVISED



FILE NUMBER: 151653
 ISSUE DATE: 05.09.2016

3D VIEW - ARENA DISTRICT AERIAL

POPULOUS **HNTB** **ewa**

SHEET
 A1 - 2

VICINITY MAP



- Milwaukee Arena**
SS Credit 2 Development Density and Connectivity Connectivity
- ① Bank - US Bank
 - ② Museum - Milwaukee Public Museum
 - ③ Park - Penn Menquella Park
 - ④ Place of Worship - Trinity Lutheran Church
 - ⑤ Library - Milwaukee Public Library
 - ⑥ Convenience Grocery - Grand Avenue Market
 - ⑦ Restaurant - Carson's Prime Steaks and BBQ Restaurant
 - ⑧ Fire Station - Milwaukee Fire Dept. Inlet
 - ⑨ Theater - Humphrey IMAX Dome Theater
 - ⑩ Fitness Center - Scott Fitness
- Residential**
Library Hill Apartments
Boston Lofts
The Grand Wisconsin



MILWAUKEE ARENA
1111 N. 4TH STREET
MILWAUKEE WI

DPD SUBMITTAL

REVISIONS

NO.	DATE	DESCRIPTION
1	03.13.21	REVISED
2	07.14.21	REVISED
2	06.22.21	REVISED

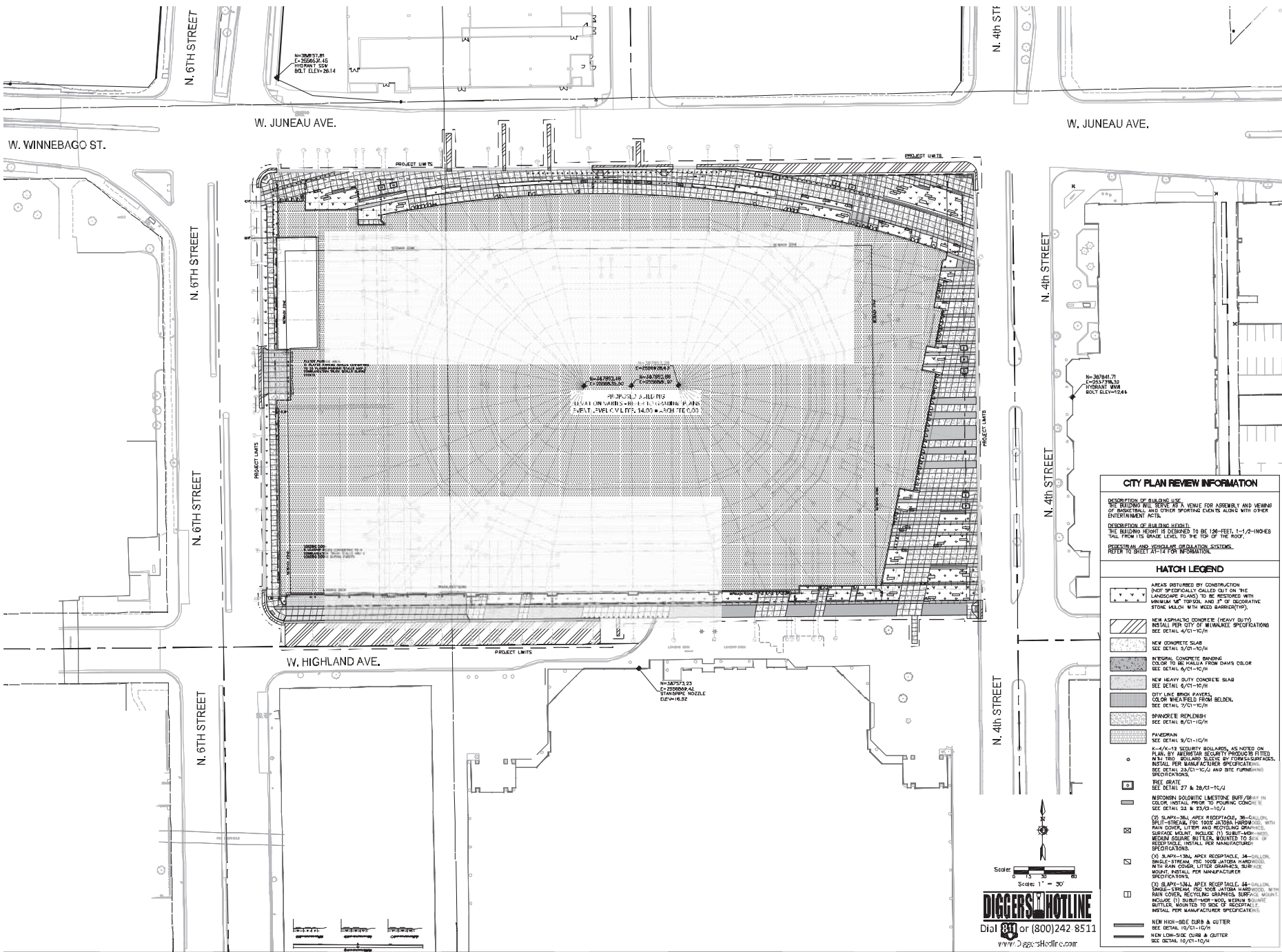


FILE NUMBER: 151653
ISSUE DATE: 05.09.2016

VICINITY MAP

POPULOUS HNTB eua

SHEET
A1 - 3



CITY PLAN REVIEW INFORMATION

DESCRIPTION OF BUILDING USE:
THE BUILDING WILL SERVE AS A VENUE FOR ASSEMBLY AND VIEWING OF BASKETBALL AND OTHER SPORTING EVENTS ALONG WITH OTHER ENTERTAINMENT ACTIVITIES.

DESCRIPTION OF BUILDING HEIGHT:
THE BUILDING HEIGHT IS DESIGNED TO BE 106 FEET, 1-1/2 INCHES TALL FROM ITS FINISHED FLOOR TO THE TOP OF THE ROOF.

PEDESTRIAN AND VEHICULAR CIRCULATION SYSTEMS:
REFER TO SHEET A1-14 FOR INFORMATION.

HATCH LEGEND

- AREAS DISTURBED BY CONSTRUCTION (NOT SPECIFICALLY CALLED OUT ON THE LANDSCAPE PLANS) TO BE RESTORED WITH MINIMUM 1" OF TOPSOIL AND 1" OF GEORGRATIC STONE MULCH WITH WOOD SHARDER (10%)
- NEW ASPHALTIC CONCRETE (HEAVY DUTY) INSTALL PER CITY OF MILWAUKEE SPECIFICATIONS SEE DETAIL 4/CI-10/18
- NEW CONCRETE SLAB SEE DETAIL 5/CI-10/18
- INTERNAL CONCRETE FINISHING COLOR TO BE MATCHED FROM DAVIS COLOR SEE DETAIL 6/CI-10/18
- NEW HEAVY DUTY CONCRETE SLAB SEE DETAIL 6/CI-10/18
- CITY-LIKE BRICK PAVEMENT COLOR TO MATCH FIELD FROM BELDEN SEE DETAIL 9/CI-10/18
- SPARKLE REFINISH SEE DETAIL 9/CI-10/18
- PANDEMAN SEE DETAIL 9/CI-10/18
- 1/4" X 1/4" SECURITY BOLTERS, AS NOTED ON PLAN, BY ALBERTAS SECURITY PRODUCTS FITTED WITH TRO-SCREWED BOLTERS BY FORN-SHAPWALD, INSTALL PER MANUFACTURER SPECIFICATIONS SEE DETAIL 24/CI-10/18 AND SITE FURNISHING SPECIFICATIONS.
- SEE GRATE SEE DETAIL 27 & 28/CI-10/18
- MERIDIAN POLYUMIC Limestone BUFF/GRAY IN COLOR, INSTALL PRIOR TO POURING CONCRETE SEE DETAIL 22 & 23/CI-10/18
- (X) SLAPX-120L APXK RECEPTACLE, 30-GALLON, BRUSH-STREAM, FSC 100% JANTONA HARDWOOD, WITH RAIN COVER, LITTER GRABBER, SURFACE MOUNT, INCLUDE (1) SURF-MOR-1000, MEDIUM SQUARE BUTTER, MOUNTED TO SIDE OF RECEPTACLE, INSTALL PER MANUFACTURER SPECIFICATIONS.
- (X) SLAPX-120L APXK RECEPTACLE, 30-GALLON, BRUSH-STREAM, FSC 100% JANTONA HARDWOOD, WITH RAIN COVER, LITTER GRABBER, SURFACE MOUNT, INSTALL PER MANUFACTURER SPECIFICATIONS.
- (X) SLAPX-120L APXK RECEPTACLE, 30-GALLON, BRUSH-STREAM, FSC 100% JANTONA HARDWOOD, WITH RAIN COVER, LITTER GRABBER, SURFACE MOUNT, INCLUDE (1) SURF-MOR-1000, MEDIUM SQUARE BUTTER, MOUNTED TO SIDE OF RECEPTACLE, INSTALL PER MANUFACTURER SPECIFICATIONS.
- NEW HIGH-SEE CURB & GUTTER SEE DETAIL 10/CI-10/18
- NEW LOW-SEE CURB & GUTTER SEE DETAIL 10/CI-10/18

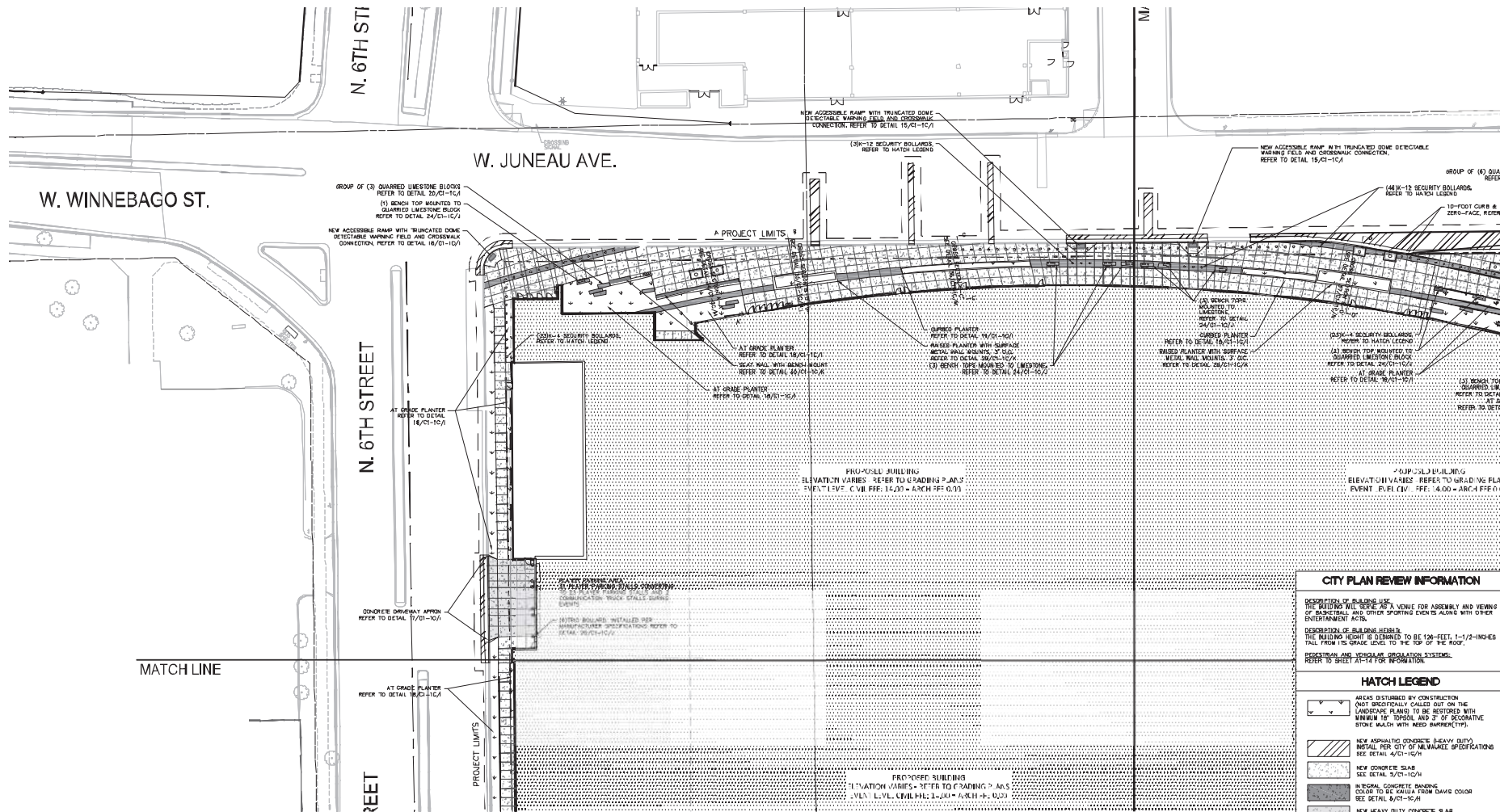
Scale: 1" = 30'

DIGGERS ON LINE
Dial 800 or (800)242 8511
www.diggersonline.com

REVISIONS

NO.	DATE	DESCRIPTION
1	03.15.17	REVISED
2	07.14.17	REVISED
3	06.29.17	REVISED





CITY PLAN REVIEW INFORMATION

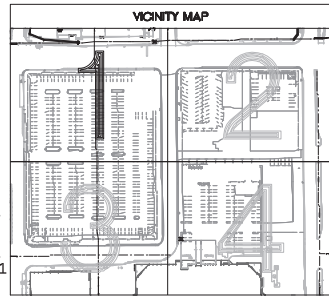
DESCRIPTION OF BUILDING USE:
 THE BUILDING WILL SERVE AS A VENUE FOR ASSEMBLY AND VIEWING OF ARTISTRIAL AND OTHER SPORTING EVENTS ALONG WITH OTHER ENTERTAINMENT ACTIVITIES.

DESCRIPTION OF BUILDING HEIGHT:
 THE BUILDING HEIGHT IS REQUIRED TO BE 126 FEET, 1-1/2 INCHES TALL FROM FINISH LEVEL TO THE TOP OF THE ROOF.

FOOTSTRAK AND VEHICULAR CIRCULATION SYSTEMS:
 REFER TO SHEET A1-11 FOR INFORMATION.

HATCH LEGEND

- AREAS DISTURBED BY CONSTRUCTION ONLY OCCASIONALLY CALLED OUT ON THE LANDSCAPE PLANS TO BE RESTORED WITH A MIXTURE OF TOPSOIL AND 2" OF RECOGNITIVE STONE MULCH WITH WOOD BARRIER (TYP).
- NEW ASPHALTIC CONCRETE (HEAVY DUTY) INSTALL PER CITY OF MILWAUKEE SPECIFICATIONS SEE DETAIL 4/01-10/11
- NEW CONCRETE SLAB SEE DETAIL 5/01-10/11
- REINFORCED CONCRETE FINISHING COLOR TO BE KALLIA FROM DAVIS COLOR SEE DETAIL 6/01-10/11
- NEW HEAVY DUTY CONCRETE SLAB SEE DETAIL 5/01-10/11
- CITY LINE BRICK PAVEMENT COLOR TO BE FIELD FROM BELDON SEE DETAIL 7/01-10/11
- SPANKRETE REFINISH SEE DETAIL 6/01-10/11
- PAVEMENT SEE DETAIL 9/01-10/11



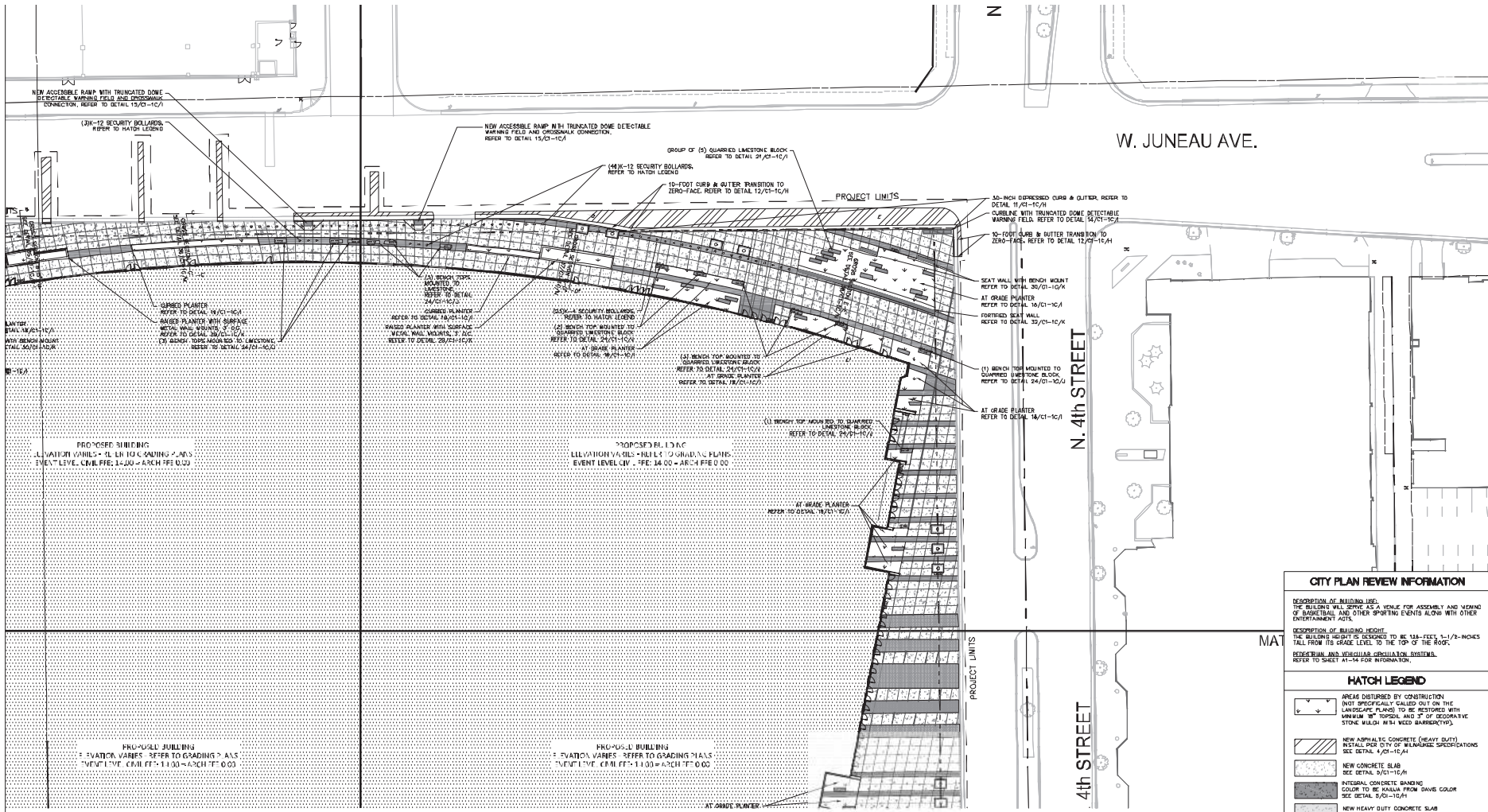
Scale 1" = 20'

DIGGERS ON HOTLINE
 Dial 811 or (800)242-8511
 www.DiggersHotline.com

REVISIONS

NO.	DATE	DESCRIPTION
1	05.12.2017	REVISED
2	06.22.2017	REVISED





CITY PLAN REVIEW INFORMATION

DESCRIPTION OF BUILDING USE:
 THE BUILDING WILL SERVE AS A VENUE FOR ASSEMBLY AND VIEWING OF BASEBALL AND OTHER SPORTING EVENTS ALONG WITH OTHER ENTERTAINMENT ACTIVITIES.

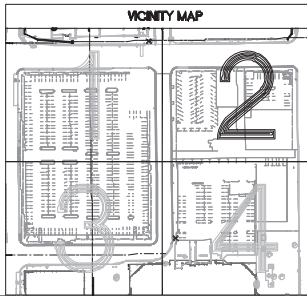
DESCRIPTION OF BUILDING HEIGHT:
 THE BUILDING HEIGHT IS DESIGNED TO BE 134'-FEET, 5 1/2-INCHES TALL FROM ITS GRADE LEVEL TO THE TOP OF THE ROOF.

REFERENCIAL AND VERTICAL CIRCULATION SYSTEMS:
 REFER TO SHEET A1-14 FOR INFORMATION.

HATCH LEGEND

- AREA DISTURBED BY CONSTRUCTION (NOT SPECIFICALLY CALLED OUT ON THE LANDSCAPE PLANS) TO BE RESTORED WITH MINIMUM 8" TOPSOIL AND 2" OF ORGANIC STONE WULF (W3) WOOD BARRIER (W3)
- NEW ASPHALT CONCRETE (HEAVY DUTY) SEE DETAIL 4/31-15/A
- NEW CONCRETE SLAB SEE DETAIL 9/31-15/A
- NATURAL CONCRETE BRANDING COLOR TO BE MATCHED FROM DAVE COLOR SEE DETAIL 5/31-15/A
- NEW HEAVY DUTY CONCRETE SLAB SEE DETAIL 5/31-15/A
- CITY LINE BRICK PAVING, COLOR MATCHED FROM BELOW, SEE DETAIL 7/31-15/A
- GRANITIC BOLDNESS SEE DETAIL 8/31-15/A
- PAVED GRASS SEE DETAIL 9/31-15/A

- 10'-X-12' SECURITY BOLLARDS, AS NOTED ON PLAN, BY AUGUSTER SECURITY PRODUCTS FITTED WITH THE BOLLARD COVER BY FORMUSURFACES, INSTALL PER MANUFACTURER'S SPECIFICATIONS. SEE DETAIL 25/31-15/A AND SITE FURNISHING SPECIFICATIONS.
- TREE GRAVE SEE DETAIL 21 & 28/31-15/A
- WISCONSIN DOLOMITIC LIMESTONE BUFF (GRAY IN COLOR) INSTALL PRIOR TO POURING CONCRETE SEE DETAIL 23 & 23/31-15/A
- (2) SLIPPY-34, 18XK RECEPTACLE, 38-GALLON, SINGLE-STREAM, FSC TUBE LAMIN HARDWOOD, WITH RAIN COVER, LITTER AND RECYCLING GRAPHICS, OVERFACE MOUNT INCLUDES (1) 38"X18"X18" METAL SQUARE BUTLER, MOUNTED TO SIDE OF RECEPTACLE, INSTALL PER MANUFACTURER'S SPECIFICATIONS.
- (3) SLIPPY-138L, 18XK RECEPTACLE, 38-GALLON, SINGLE-STREAM, FSC TUBE LAMIN HARDWOOD, WITH RAIN COVER, RECYCLING GRAPHICS, OVERFACE MOUNT INCLUDES (1) 38"X18"X18" METAL SQUARE BUTLER, MOUNTED TO SIDE OF RECEPTACLE, INSTALL PER MANUFACTURER'S SPECIFICATIONS.
- NEW HIGH-SIDE CURB & OUTER SEE DETAIL 10/31-15/A
- NEW LOW-SIDE CURB & OUTER SEE DETAIL 10/31-15/A



PROPOSED BUILDING ELEVATION (WALLS) - 11'-0" TO 10'-0" GRADING - 1'-0" ASST. EVENT LEVEL - 11'-0" TO 10'-0" GRADING - 1'-0" ASST.

PROPOSED BUILDING ELEVATION (WALLS) - 11'-0" TO 10'-0" GRADING - 1'-0" ASST. EVENT LEVEL - 11'-0" TO 10'-0" GRADING - 1'-0" ASST.

PROPOSED BUILDING ELEVATION (WALLS) - 11'-0" TO 10'-0" GRADING - 1'-0" ASST. EVENT LEVEL - 11'-0" TO 10'-0" GRADING - 1'-0" ASST.



MILWAUKEE ARENA
1111 N. 4TH STREET
MILWAUKEE WI

DPD SUBMITTAL

REVISIONS

NO.	DATE	DESCRIPTION
1	05.09.2016	REVISED
2	05.09.2016	REVISED

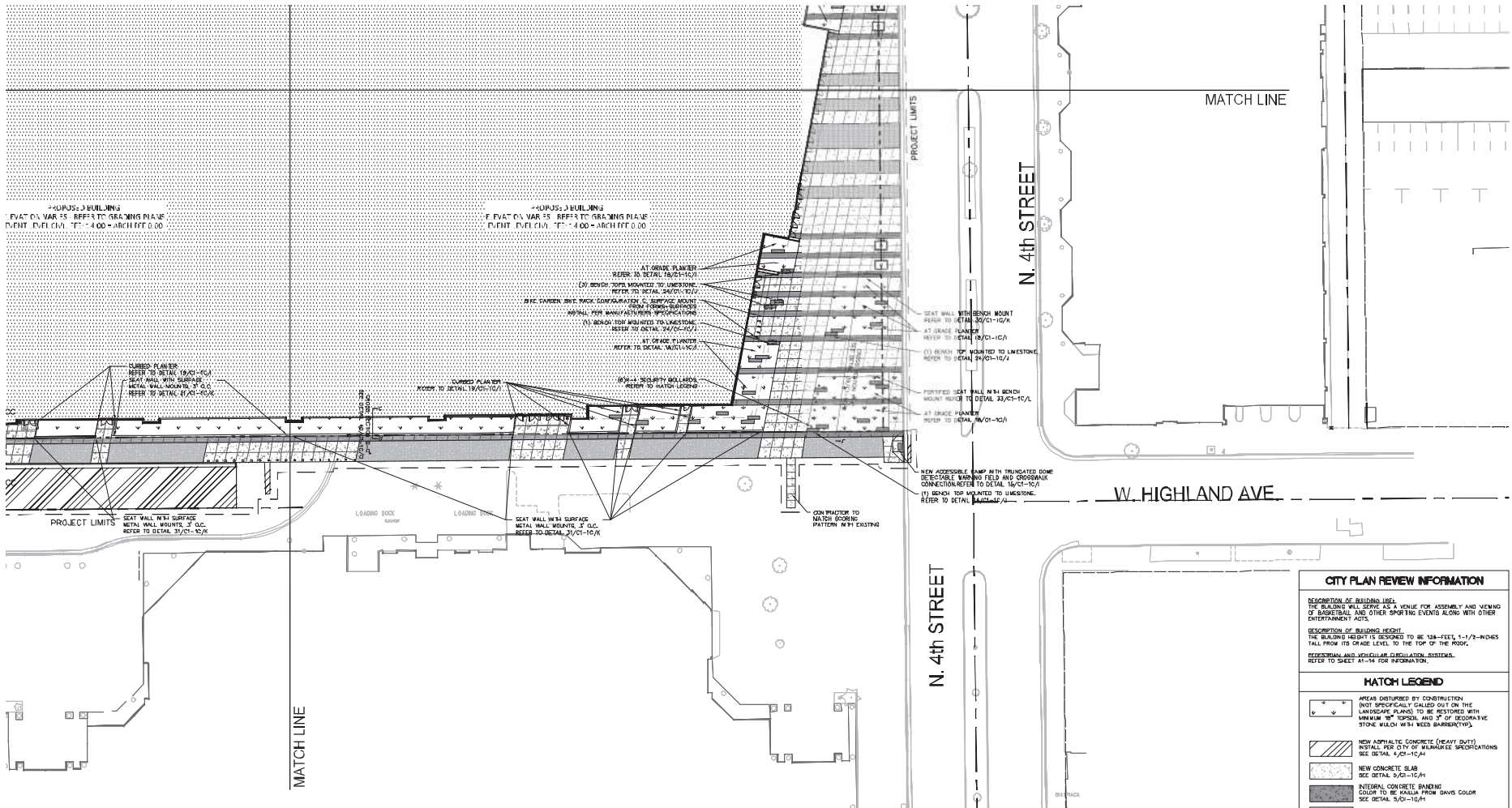


FILE NUMBER: 151653
 ISSUE DATE: 05.09.2016

ENLARGED SITE PLAN -
 4TH & JUNEAU

POPULOUS HNTB eua

SHEET
 A1- 7



-SUPOSE J BUILDING
 -FVACT OJ VAR 7S REFERS TO GRADING PLANS
 -EVENT ELEV CLM TT -400 -ARCHITFEE 0.00

-SUPOSE J BUILDING
 -FVACT OJ VAR 7S REFERS TO GRADING PLANS
 -EVENT ELEV CLM TT -400 -ARCHITFEE 0.00

MATCH LINE

MATCH LINE

N. 4th STREET

N. 4th STREET

W. HIGHLAND AVE

CITY PLAN REVIEW INFORMATION

DESCRIPTION OF BUILDING USE:
 THE BUILDING WILL SERVE AS A VENUE FOR ASSEMBLY AND VIEWING OF BARBERSHOP AND OTHER SPORTS EVENTS ALONG WITH OTHER ENTERTAINMENT ACTS.

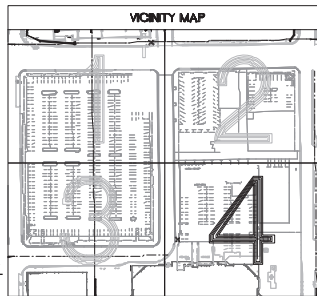
DESCRIPTION OF BUILDING HEIGHT:
 THE BUILDING HEIGHT IS DESIGNED TO BE 126-FEET, 1-1/2-INCHES TALL FROM ITS GRADE LEVEL TO THE TOP OF THE ROOF.

RECREATIONAL AND RECREATION-ADJACENT SYSTEMS:
 REFER TO SHEET A1-14 FOR INFORMATION.

HATCH LEGEND

- AREAS DISTURBED BY CONSTRUCTION (NOT SPECIFICALLY CALLED OUT ON THE LANDSCAPE PLANS) TO BE RESTORED WITH MINIMUM 10" TOPSOIL AND 2" OF DECOMPOSITIVE STONE WULF WITH WEED BARRIERS(TYP)
- NEW ASPHALT CONCRETE (HEAVY DUTY) METALL FIBER 5% BY WEIGHT PER MANUFACTURER SPECIFICATIONS SEE DETAIL 4/01-10/A
- NEW CONCRETE SLAB SEE DETAIL 5/01-10/A
- INTEGRAL CONCRETE BANDING COLOR TO BE HAZARD FROM DAVIS COLOR SEE DETAIL 5/01-10/A
- NEW HEAVY-DUTY CONCRETE SLAB SEE DETAIL 5/01-10/A
- CITY LINE BRICK PAVERS COLOR HAZARD FROM BILDEN SEE DETAIL 7/01-10/A
- GRANITE BRECKLENISH SEE DETAIL 8/01-10/A
- PAVERS/BRICK SEE DETAIL 9/01-10/A

- DESCRIPTION OF BUILDING USE:**
 K-4-K-10 SECURITY BOLLARDS AS NOTED ON PLAN BY ARBITRARY SECURITY PRODUCTS FITTED WITH TIPS WELDED GLEVE BY FORSH/SURFACES. METALL FIBER 5% BY WEIGHT PER MANUFACTURER SPECIFICATIONS. SEE DETAIL 20/01-10/J AND SITE FINISHING SPECIFICATIONS.
- TREE GRADE SEE DETAIL 21 & 28/01-10/J
 - WISCONSIN DOLOMITIC LIMESTONE BUFF/GRAY IN COLOR. INSTALL PRIOR TO POURING CONCRETE SEE DETAIL 22 & 23/01-10/J
 - (12) SLABS-12"X 18"X 4" RECEPTACLE, 36-GALLON, SINGLE-STRAIN, FOR TOILET JATODA HARDWOOD, WITH RAIN COVER, LITTER AND RECYCLING GRAPHICS, SURFACE MOUNT. METALL FIBER 5% BY WEIGHT PER MANUFACTURER SPECIFICATIONS.
 - (12) SLABS-12"X 18"X 4" RECEPTACLE, 36-GALLON, SINGLE-STRAIN, FOR TOILET JATODA HARDWOOD, WITH RAIN COVER, LITTER AND RECYCLING GRAPHICS, SURFACE MOUNT. METALL FIBER 5% BY WEIGHT PER MANUFACTURER SPECIFICATIONS.
 - (12) SLABS-12"X 18"X 4" RECEPTACLE, 36-GALLON, SINGLE-STRAIN, FOR TOILET JATODA HARDWOOD, WITH RAIN COVER, LITTER AND RECYCLING GRAPHICS, SURFACE MOUNT. METALL FIBER 5% BY WEIGHT PER MANUFACTURER SPECIFICATIONS.
 - NEW HIGH-RISE CURB & GUTTER SEE DETAIL 10/01-10/A
 - NEW LOW-RISE CURB & GUTTER SEE DETAIL 10/01-10/A



Scale: 0 10 20
 Scale: 1" = 20'

DIGGERS HOTLINE
 Dial 811 or (800)242-8511
 www.DiggersHotline.com



MILWAUKEE ARENA
 1111 N. 4TH STREET
 MILWAUKEE WI

DPD SUBMITTAL

REVISIONS

NO.	DATE	DESCRIPTION
1	03.05.2017	REVISED
2	07.14.2017	REVISED
3	06.29.2017	REVISED

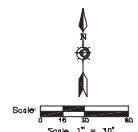
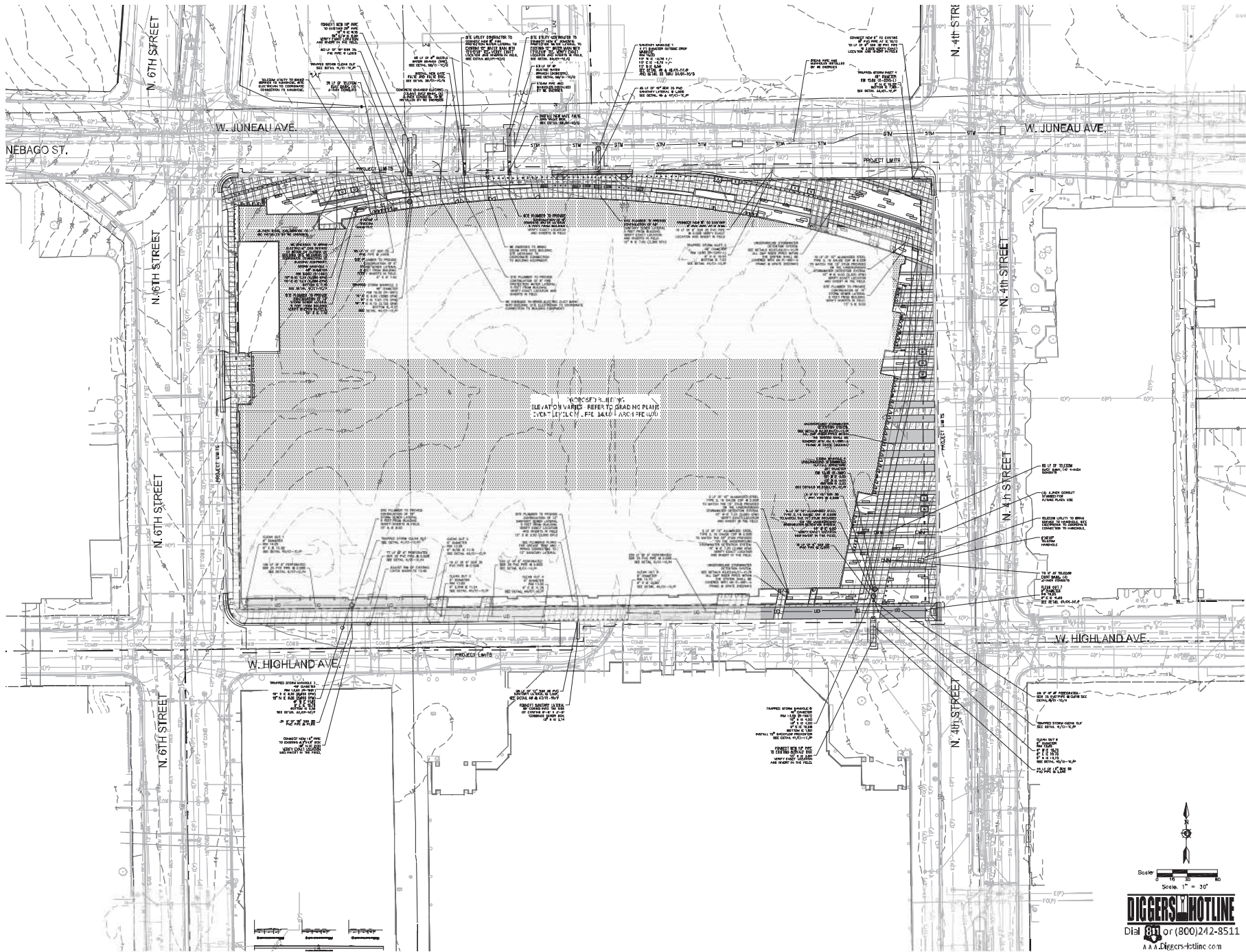


FILE NUMBER: 151653
 ISSUE DATE: 05.09.2016

ENLARGED SITE PLAN -
 4TH & HIGHLAND



SHEET
 A1 - 9



DIGGERS HOTLINE
 Dial 811 or (800)242-8511
 A.A.A. Diggers-Hotline.com



MILWAUKEE ARENA
1111 N. 4TH STREET
MILWAUKEE WI

DPD SUBMITTAL

REVISIONS

NO.	DATE	DESCRIPTION
1	03.15.16	REVISED
2	07.14.16	REVISED
3	08.24.16	REVISED

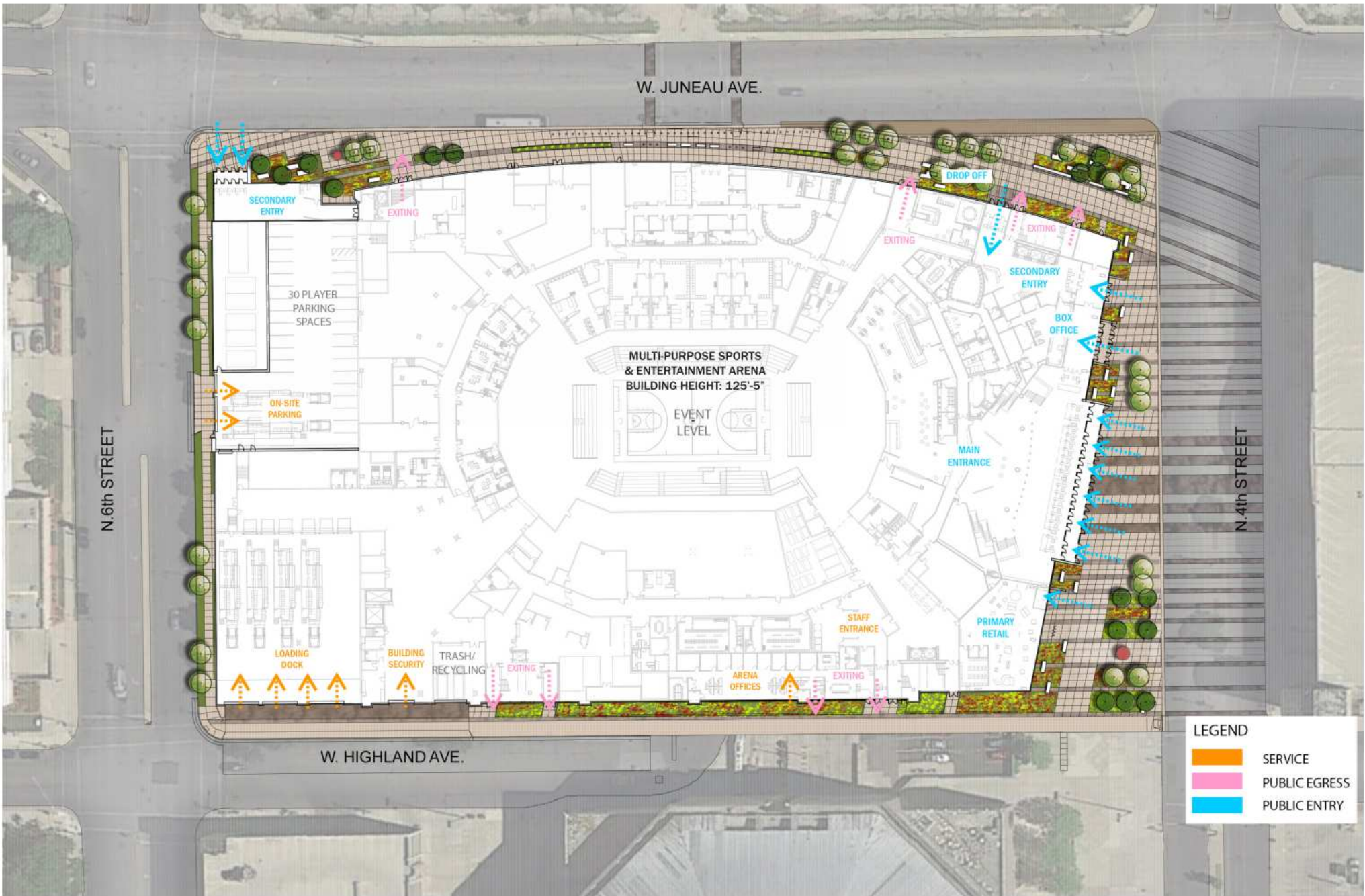


FILE NUMBER: 151653
 ISSUE DATE: 05.09.2016

OVERALL UTILITY PLAN

POPULOUS HNTB eua

SHEET
 A1 - 13



LEGEND

- SERVICE
- PUBLIC EGRESS
- PUBLIC ENTRY



MILWAUKEE ARENA
1111 N. 4TH STREET
MILWAUKEE WI

DPD SUBMITTAL

REVISIONS

NO.	DATE	DESCRIPTION
1	03.17.2016	REVISED
2	04.04.2016	REVISED
3	05.06.2016	REVISED

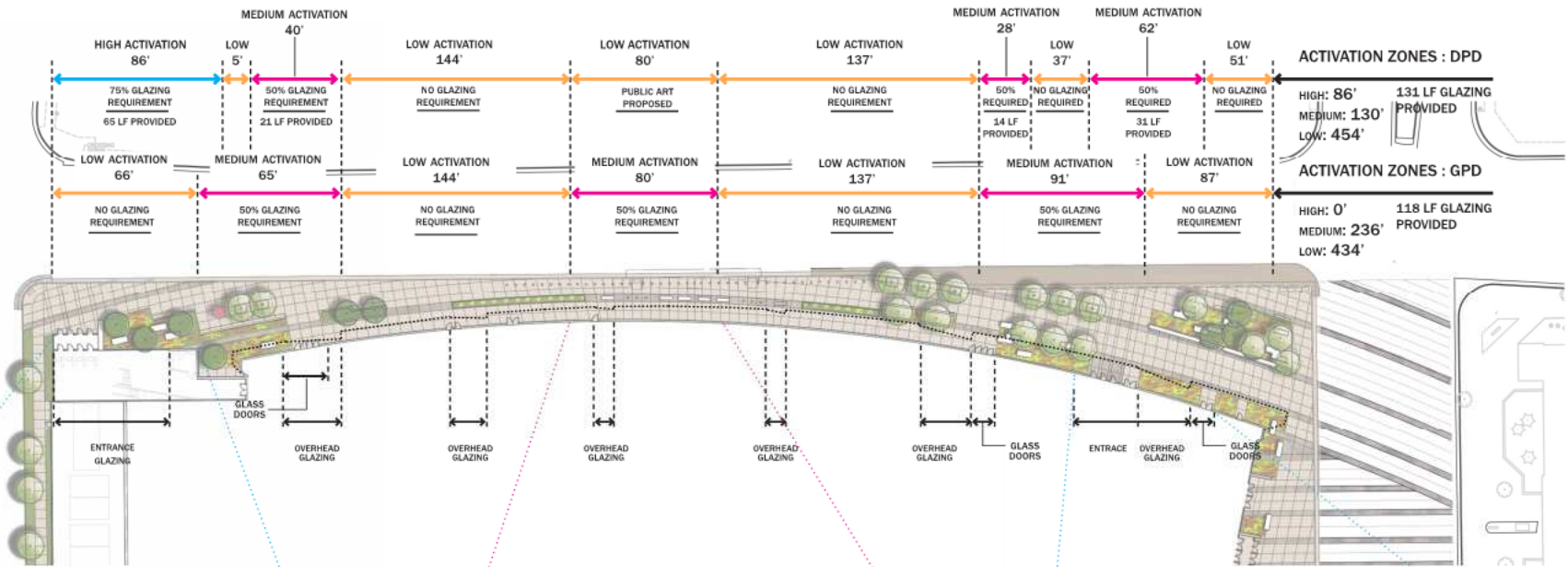


FILE NUMBER: 151653
 ISSUE DATE: 05.09.2016

OVERALL SITE CIRCULATION PLAN

POPULOUS **HNTB** **ewa**

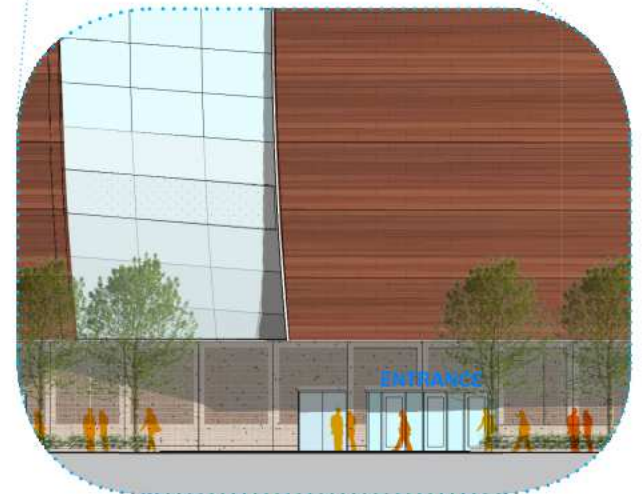
SHEET
A1 - 14



PUBLIC ENTRANCE AT 6TH & JUNEAU
VIEW SOUTH



REPRESENTATION OF INTEGRATED
ART ELEMENT



ARENA ENTRANCE
NORTHEAST CORNER



MILWAUKEE ARENA
1111 N. 4TH STREET
MILWAUKEE WI

DPD SUBMITTAL

REVISIONS

NO.	DATE	DESCRIPTION
1	03.15.16	REVISED
2	06.14.16	REVISED
3	06.22.16	REVISED

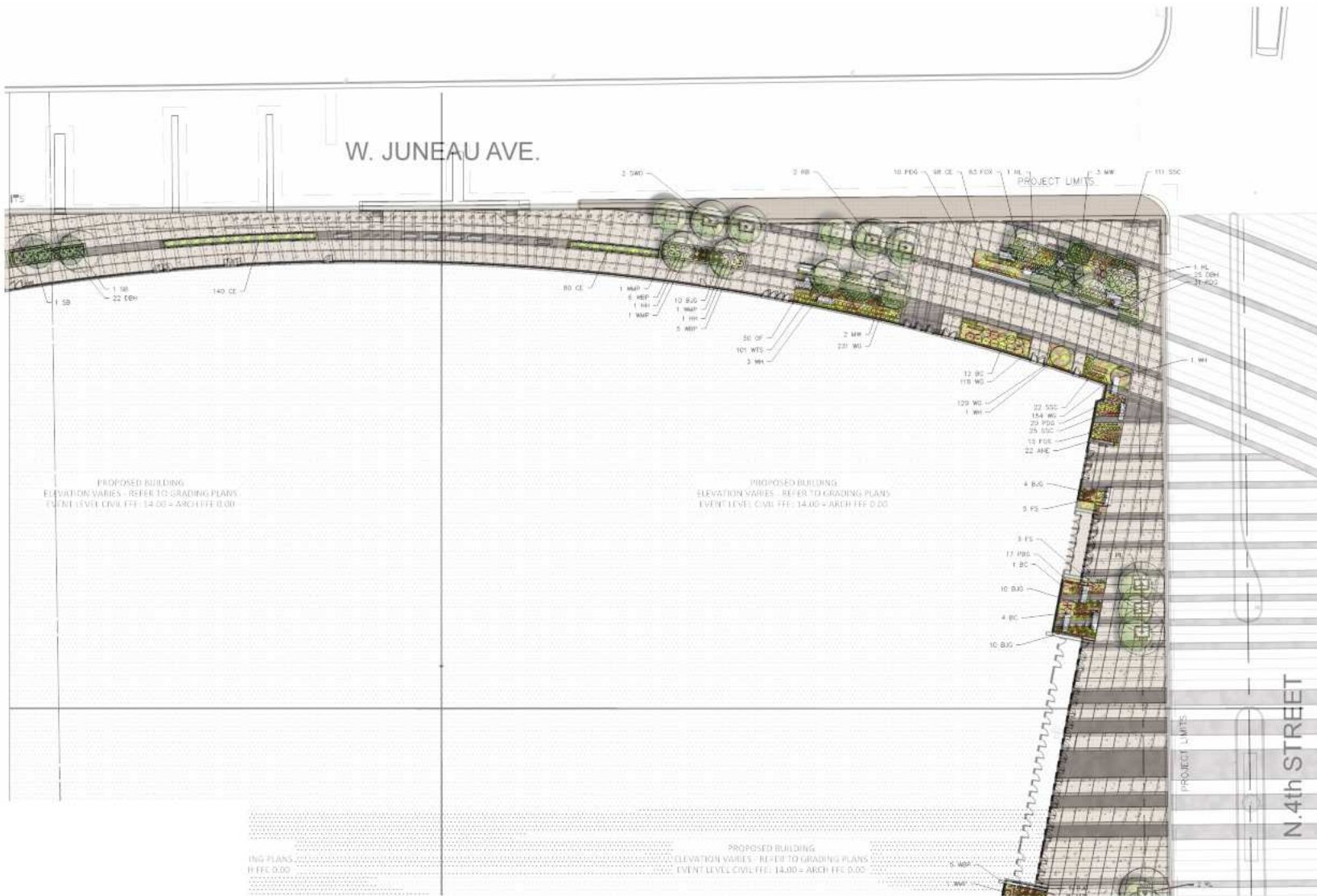


FILE NUMBER: 151653
ISSUE DATE: 05.09.2016

NORTH ACTIVATION PLAN - JUNEAU

POPULOUS HNTB eua

SHEET
A1 - 15



CITY PLAN REVIEW INFORMATION	
ROOTS OF WAY LANDSCAPE LANDSCAPE ELEMENTS THAT OCCUR BEYOND THE PROPERTY LINES AND IN THE RIGHT OF WAY ARE SHOWN FOR ILLUSTRATIVE PURPOSES ONLY AND FINAL STREETSCAPE DESIGN WILL BE CREATED AND IS OUTSIDE THE SCOPE OF THE REQUIRED DRAWINGS.	
PLANT KEY	
GRADE TREES	
HH	HORNBEAM, HOP
KCT	COFFEE TREE, KENTUCKY
SWD	OAK, SWAMP WHITE
HL	HONELOCUST
HL	LINDEN, AMERICAN
ORNAMENTAL TREES	
RB	REDBUD, 'COLUMBUS'
MW	MUSCLEWOOD
CH	HAWTHORN, COCKSPUR THORNLESS
SB	SERVICELBERY
WH	WINDHHAZEL
SHRUBS	
BD	CHOKEBERRY, BLACK
DBH	HONEYSUCKLE, DWARF BUSH
FS	SUMAC, FRAGRANT
WBP	HOLLY, WINTERBERRY (FEMALE)
WBP	HOLLY, WINTERBERRY (MALE)
PERENNIALS, GRASSES, GROUNDCOVERS AND EVERGREENS	
SP	BUTTERFLY WEED
CE	SEDGE, IVORY
WTS	SEDGE, WHITE TINGED
PC	CONEFLOWER, PURPLE
SSC	COREOPSIS 'SINNA SUNSET'
ANE	ASTER, NEW ENGLAND
FOX	SEDG. FOX
WG	GERANIUM, WILD
PDG	GRASS, PRAIRIE DROPSIDEM
LRG	GRASS, LITTLE BLUESTEM
BJC	JOINT GRASS, BLUE
BFS	BLACKEYED SUSAN
PBS	BLAZING STAR
OF	FERN, OSTREICH
VC	CREEPER, VIRGINIA
BJ	JUNIFER, BROADMOR
SJ	JUNIFER, CREEPING WISCONSIN



MILWAUKEE ARENA
1111 N. 4TH STREET
MILWAUKEE WI

DPD SUBMITTAL

REVISIONS

NO.	DATE	DESCRIPTION
1	01.17.2016	REVISED
2	04.04.2016	REVISED
3	05.06.2016	REVISED



FILE NUMBER: 151653
 ISSUE DATE: 05.09.2016

ENLARGED LANDSCAPE PLAN -
 4TH & JUNEAU

POPULOUS HNTB eua

SHEET
 A1 - 16



CITY PLAN REVIEW INFORMATION	
RIGHT OF WAY LANDSCAPE LANDSCAPE ELEMENTS THAT OCCUR BEYOND THE PROPERTY LINES AND IN THE RIGHT OF WAY ARE SHOWN FOR ILLUSTRATIVE PURPOSES ONLY AND FINAL STREETSCAPE DESIGN WILL BE CREATED AND IS OUTSIDE THE SCOPE OF THE REQUIRED DRAWINGS.	
PLANT KEY	
SHADE TREES	
HH	HORNBEAM, HOP
KCT	COFFEE TREE, KENTUCKY
SWD	OAK, SWAMP WHITE
HL	HORVLOUST
RL	LINDEN, AMERICAN
ORNAMENTAL TREES	
FB	REDBUD, 'COLUMBUS'
MW	MUSCLEWOOD
CH	HAWTHORN, COCKSPUR THORNLESS
SB	SERVISBERRY
WH	WICHHAZEL
SHRUBS	
BD	DOGEBERRY, BLACK
DEH	HONEYBUCKLE, DWARF BUSH
FS	SUMAC, FRAGRANT
WBP	HOLLY, WINTERBERRY (FEMALE)
WMP	HOLLY, WINTERBERRY (MALE)
PERENNIALS, GRASSES, GROUNDCOVERS AND EVERGREENS	
BF	BUTTERFLY WEED
CE	SEDGE, IVORY
WTS	SEDGE, WHITE TINGED
PC	CONEFLOWER, PURPLE
SSC	CONEOPSIS 'SIENNA SUNSET'
AHE	ASTER, NEW ENGLAND
FOX	SEDGE, FOX
WG	GERANIUM, WILD
PDG	GRASS, PRAIRIE DROPSIED
LRG	GRASS, LITTLE BLUESTEM
BJG	JOINT GRASS, BLUE
BFS	BLACKEYED SUSAN
PBS	BLADING STAR
OF	FERN, OSTREICH
VC	CREEPER, VIRGINIA
BJ	JUNIFER, BROADMOOR
SJ	JUNIFER, CREEPING WISCONSIN



MILWAUKEE ARENA
1111 N. 4TH STREET
MILWAUKEE WI

DPD SUBMITTAL

REVISIONS

NO.	DATE	DESCRIPTION
1	01.17.2016	REVISED
2	04.04.2016	REVISED
3	05.06.2016	REVISED



FILE NUMBER: 151653
ISSUE DATE: 05.09.2016

ENLARGED LANDSCAPE PLAN -
4TH & HIGHLAND

POPULOUS HNTB eua

SHEET
A1 - 17

N. 6th STREET



CITY PLAN REVIEW INFORMATION	
<p>RIGHT OF WAY LANDSCAPE LANDSCAPE ELEMENTS THAT OCCUR BEYOND THE PROPERTY LINES AND IN THE RIGHT OF WAY ARE SHOWN FOR ILLUSTRATIVE PURPOSES ONLY AND FINAL STREETSCAPE DESIGN WILL BE CREATED AND IS OUTSIDE THE SCOPE OF THE REQUIRED DRAWINGS.</p>	
PLANT KEY	
SHADE TREES	
HH	HORNBEAM, HOP
KCT	COFFEE TREE, KENTUCKY
SWO	OAK, SWAMP WHITE
HL	HONEYLOCUST
HL	LINDEN, AMERICAN
ORNAMENTAL TREES	
RB	REDBUD, 'COLUMBUS'
MW	MUSCLEWOOD
CH	HAWTHORN, COCKSPUR THORNLESS
SB	SERVICELBERY
WH	WINDYHAZEL
SHRUBS	
BD	CHOKERBERRY, BLACK
DBH	HONEYLOCUST, DWARF BUSH
FS	SUMAC, FRAGRANT
WSP	HOLLY, WINTERBERRY (FEMALE)
HWP	HOLLY, WINTERBERRY (MALE)
PERENNIALS, GRASSES, GROUNDCOVERS AND EVERGREENS	
SP	BUTTERFLY WEED
CE	SEDGE, IVORY
WTS	SEDGE, WHITE TINGED
PC	CONEFLOWER, PURPLE
SSC	COREOPSIS 'SENNA SUNSET'
ANE	ASTER, NEW ENGLAND
FOX	SEDG. FOX
WG	GERANIUM, WILD
PGG	GRASS, PRAIRIE DROPSID
LRG	GRASS, LITTLE BLUESTEM
BJC	JOINT GRASS, BLUE
BFS	BLACKEYED SUSAN
PBS	BLAZING STAR
OF	FERN, OSTRICH
VC	CREEPER, VIRGINIA
BJ	JUNIPER, BROADMOOR
SJ	JUNIPER, CREEPING WISCONSIN



MILWAUKEE ARENA
 1111 N. 4TH STREET
 MILWAUKEE WI

DPD SUBMITTAL

REVISIONS

NO.	DATE	DESCRIPTION
1	01.17.2016	REVISED
2	04.14.2016	REVISED
3	05.06.2016	REVISED

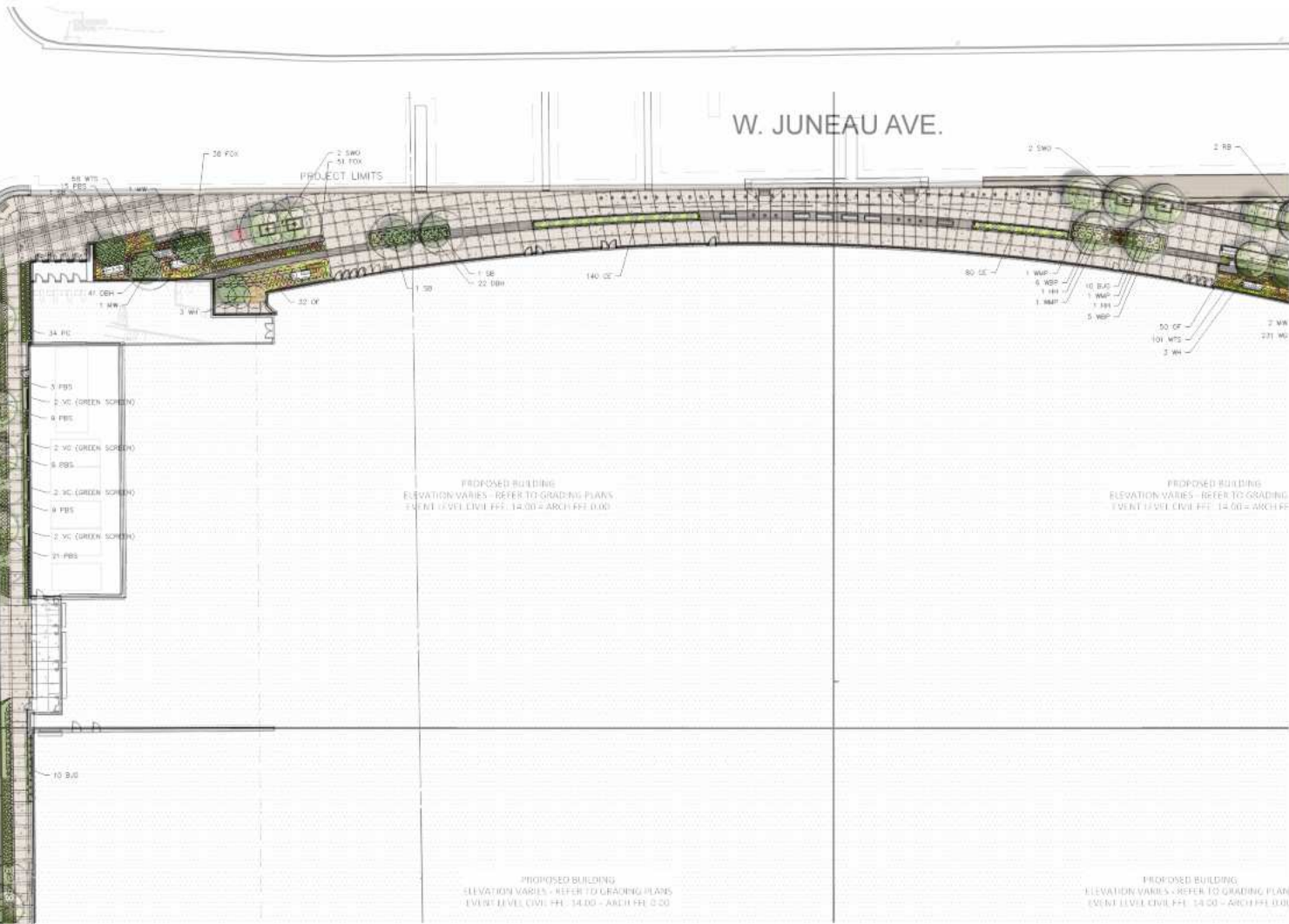


FILE NUMBER: 151653
 ISSUE DATE: 05.09.2016

ENLARGED LANDSCAPE PLAN -
 6TH & HIGHLAND

POPULOUS HNTB eua

SHEET
 A1 - 18



CITY PLAN REVIEW INFORMATION	
ROOT OF WAY LANDSCAPE LANDSCAPE ELEMENTS THAT OCCUR BEYOND THE PROPERTY LINES AND IN THE RIGHT OF WAY ARE SHOWN FOR ILLUSTRATIVE PURPOSES ONLY AND FINAL STREETSCAPE DESIGN WILL BE CREATED AND IS OUTSIDE THE SCOPE OF THE REQUIRED DRAWINGS.	
PLANT KEY	
SHADE TREES	
HH	HORNBEAM, HOP
KCT	COFFEE TREE, KENTUCKY
SWO	OAK, SWAMP WHITE
HL	HONEYLOCUST
RL	LINDEN, AMERICAN
ORNAMENTAL TREES	
RB	REDBUD, 'COLUMBUS'
MW	MUSCLEWOOD
CH	HAWTHORN, COCKSPUR THORNLESS
SB	SERVICELERRY
WH	WINDYHAZEL
SHRUBS	
BD	CHOKERBERRY, BLACK
DBH	HONEYSUCKLE, DWARF BUSH
FS	SUMAC, FRAGRANT
WBP	HOLLY, WINTERBERRY (FEMALE)
HWP	HOLLY, WINTERBERRY (MALE)
PERENNIALS, GRASSES, GROUNDCOVERS AND EVERGREENS	
BP	BATTERED WEED
CE	SEDGE, IVORY
WTS	SEDGE, WHITE TINGED
PC	CONEFLOWER, PURPLE
SSC	COREOPSIS 'SENNA SUNSET'
ANE	ASTER, NEW ENGLAND
FOX	SEDG. FOX
WG	GERANIUM, WILD
PGC	GRASS, PRAIRIE DROPSID
LRG	GRASS, LITTLE BLUESTEM
BJC	JOINT GRASS, BLUE
BFS	BLACKEYED SUSAN
PBS	BLAZING STAR
OF	FERN, OSTRICH
VC	CREEPER, VIRGINIA
BJ	JUNIPER, BROADCOR
SJ	JUNIPER, CREEPING WISCONSIN

N.6th STREET

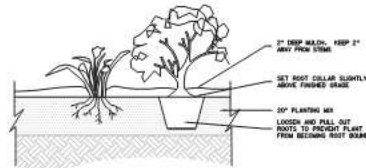
W. JUNEAU AVE.

REVISIONS		
NO.	DATE	DESCRIPTION
1	01.17.2016	REVISED
2	04.04.2016	REVISED
3	05.06.2016	REVISED



SYM.	QTY/FT	COMMON NAME	SCIENTIFIC NAME	AVG. NATURE HEIGHT	HT WHEN PLANTED	ROOT ZONE WIDE
SHADE TREES						
HM	2	Hemlock, Fir	<i>Thuja occidentalis</i>	30'	2" CAL.	B&B
ACT	4	Coffee Tree, Kentucky	<i>Gymnocladia dioica</i>	50'	2" CAL.	B&B
SWD	7	Oak, Swamp White	<i>Quercus bicolor</i>	50'	2 1/2" CAL.	B&B
HL	2	Hickory, Black	<i>Juglans nigra</i>	50'	2 1/2" CAL.	B&B
HL	3	Hickory, American	<i>Juglans floricarpa</i>	45'	2 1/2" CAL.	B&B
ORNAMENTAL TREES						
RB	2	Redbud, Columbia	<i>Cercis canadensis</i>	20'	2" CAL.	B&B
BN	7	Blackwood	<i>Cornus canadensis</i>	20'	2" CAL.	B&B
CH	2	Hawthorn, cockspur thornless	<i>Crataegus crataegoides</i>	30'	2" CAL.	B&B
SB	7	Sweetgum	<i>Liquidambar styraciflua</i>	20'	2" CAL.	B&B
WH	8	White Birch	<i>Betula papyrifera</i>	15'	2" CAL.	B&B
EVERGREEN SHRUBS						
BJ	13	Jordan, Broadleaf	<i>Andropogon virginicus</i>	18"	#3	CONT.
BJ	15	Jordan, needle leaf	<i>Andropogon virginicus</i>	12"	#5	CONT.
DECIDUOUS SHRUBS						
BC	20	Chokeberry, Black	<i>Aronia melanocarpa</i>	8'	2" HT.	CONT.
DBH	134	Honeysuckle, Dwarf Bush	<i>Lonicera dioica</i>	8'	18" HT.	CONT.
PS	41	Syringa, Gro-Low Fragrant	<i>Syringa microbotrya</i>	7'	12" HT.	CONT.
WSP	66	Holly, Strawberry (male)	<i>Ilex verticillata</i>	5'	2" HT.	CONT.
WMP	6	Holly, Strawberry (male)	<i>Ilex verticillata</i>	5'	2" HT.	CONT.
PERENNIALS, GRASSES & GROUNDCOVERS						
LF	152	Lithospermum	<i>Lithospermum</i>	5"	4"	CONT.
CE	800	Sedge, Ivory	<i>Carex obovata</i>	12"	4"	CONT.
WTS	159	Sedge, white top	<i>Carex albicans</i>	18"	4"	CONT.
PCI	252	Coniopsis, purple	<i>Coniopsis purpurea</i>	4"	4"	CONT.
SSC	319	Coniopsis, Green Starlet	<i>Coniopsis green starlet</i>	1"	4"	CONT.
ANE	224	Aster, New England	<i>Aster novae-angliae</i>	1"	4"	CONT.
FOX	113	Sedge, Fox	<i>Carex foxii</i>	2"	4"	CONT.
WG	849	Geranium, Wild	<i>Geranium wild</i>	8"	4"	CONT.
PDO	168	Grass, Purple Dropseed	<i>Sporobolus tenuiflorus</i>	2"	4"	CONT.
BJS	187	Jet Grass, Blue	<i>Calamagrostis canadensis</i>	4"	4"	CONT.
RES	406	Rudbeckia, Black	<i>Rudbeckia hirta</i>	3"	4"	CONT.
PSB	172	Black Star, Purple	<i>Black star purple</i>	3"	4"	CONT.
OP	80	Ornithoglossum	<i>Ornithoglossum</i>	3"	4"	CONT.
MISC.						
VC	16	Crucifer, White	<i>Crucifer white</i>	5"	#1	CONT.

1 PLANT SCHEDULE
R1A

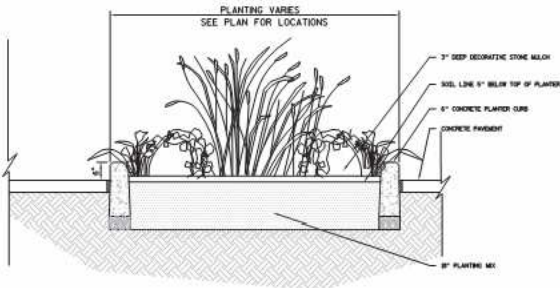


NOTE:
IF ALL POTS SHALL BE REMOVED PRIOR TO PLANTING

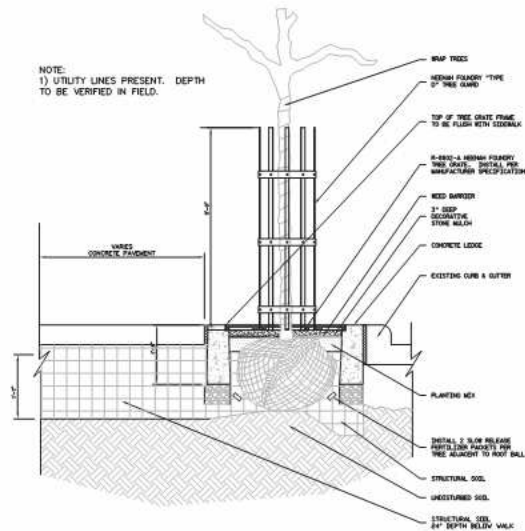
2 SHRUB & PERENNIAL PLANTING DETAIL
R1A



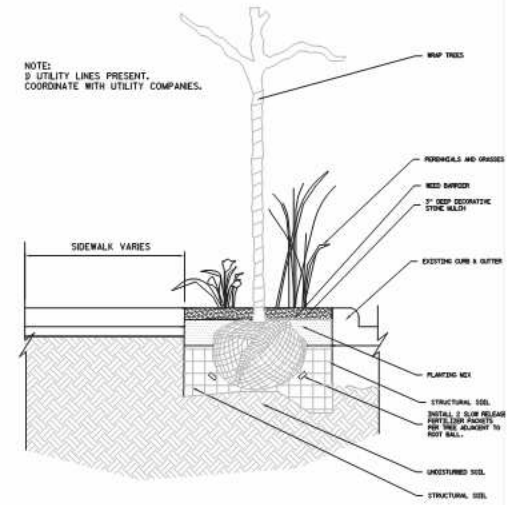
3 AT-GRADE PLANTER
R1A



4 6" CURB PLANTER
R1A



5 TREE PLANTING WITH GRATE
R1A



6 STREET TREE PLANTING
R1A



MILWAUKEE ARENA
1111 N. 4TH STREET
MILWAUKEE WI

DPD SUBMITTAL

REVISIONS

NO.	DATE	DESCRIPTION
1	01.17.2016	REVISED
2	04.04.2016	REVISED
3	05.08.2016	REVISED

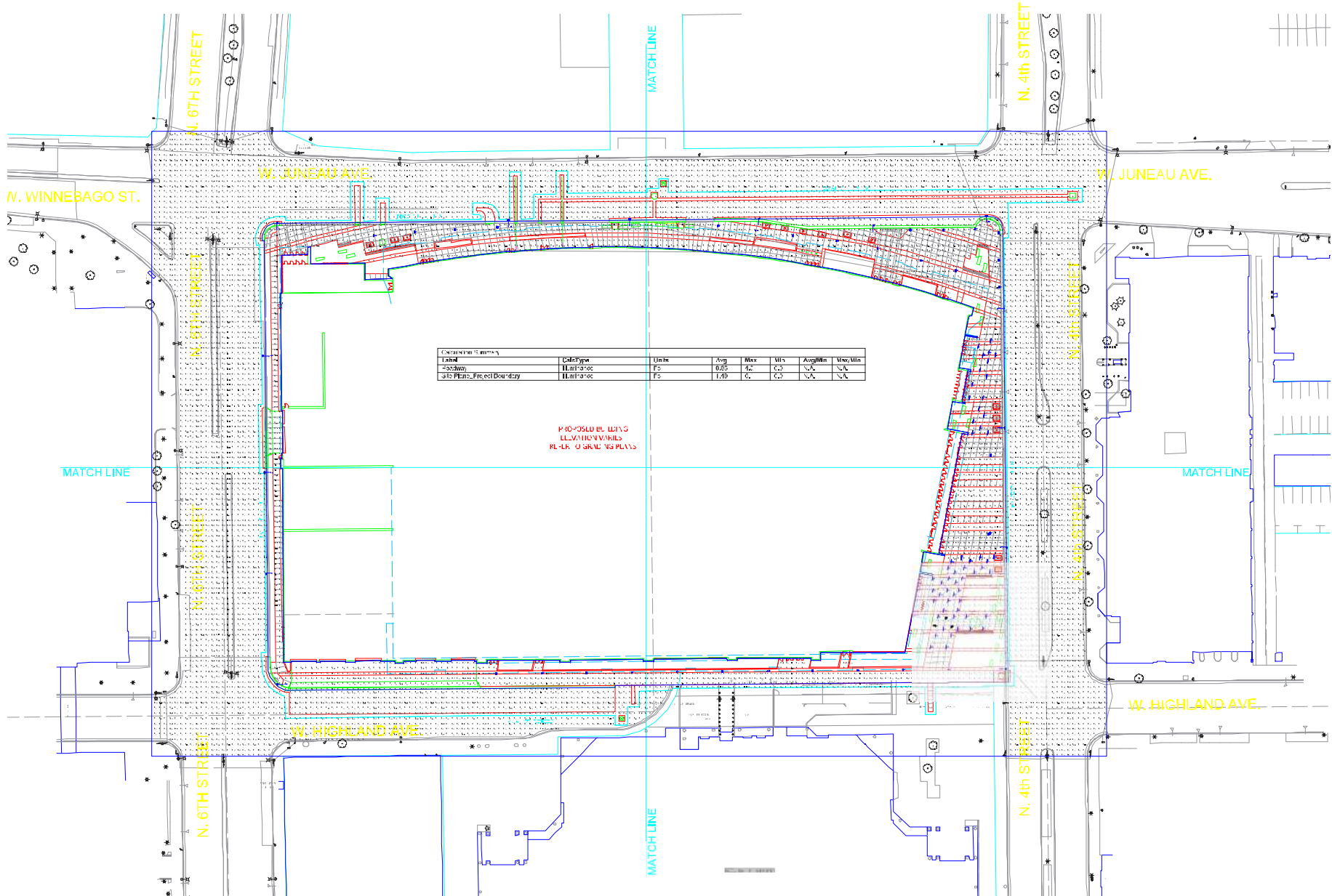


FILE NUMBER: 151653
ISSUE DATE: 05.09.2016

SITE LANDSCAPE DETAILS

POPULOUS HNTB eua

SHEET
A1 - 20



MILWAUKEE ARENA
1111 N. 4TH STREET
MILWAUKEE WI

DPD SUBMITTAL

REVISIONS

NO.	DATE	DESCRIPTION
1	05.11.2017	REVISED
2	07.14.2017	REVISED
3	06.22.2017	REVISED



FILE NUMBER: 151653
ISSUE DATE: 05.09.2016

SITE AREA LIGHTING -
PHOTOMETRIC STUDY

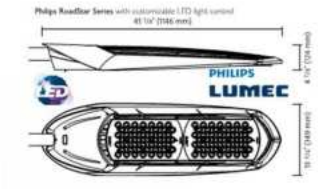
POPULOUS HNTB eua

SHEET
A1 - 21

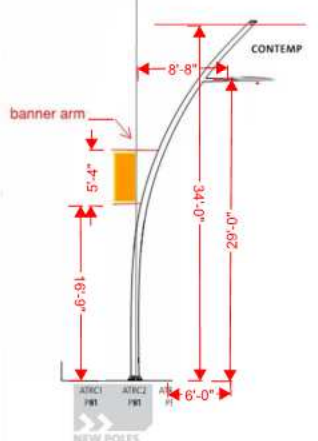
NO.	SYM.	DESCRIPTION	QTY	MANUFACTURER	MODEL	WATTAGE	VOLTS	TYPE	REMARKS
1	PL	PLAZA LIGHTING FIXTURE	1	PHILIPS	LUMEC	100W	120V	RECESSED	PHILIPS LUMEC PLAZA LIGHTING FIXTURE
2	PL	PLAZA LIGHTING FIXTURE	1	PHILIPS	LUMEC	100W	120V	RECESSED	PHILIPS LUMEC PLAZA LIGHTING FIXTURE
3	PL	PLAZA LIGHTING FIXTURE	1	PHILIPS	LUMEC	100W	120V	RECESSED	PHILIPS LUMEC PLAZA LIGHTING FIXTURE
4	PL	PLAZA LIGHTING FIXTURE	1	PHILIPS	LUMEC	100W	120V	RECESSED	PHILIPS LUMEC PLAZA LIGHTING FIXTURE
5	PL	PLAZA LIGHTING FIXTURE	1	PHILIPS	LUMEC	100W	120V	RECESSED	PHILIPS LUMEC PLAZA LIGHTING FIXTURE
6	PL	PLAZA LIGHTING FIXTURE	1	PHILIPS	LUMEC	100W	120V	RECESSED	PHILIPS LUMEC PLAZA LIGHTING FIXTURE
7	PL	PLAZA LIGHTING FIXTURE	1	PHILIPS	LUMEC	100W	120V	RECESSED	PHILIPS LUMEC PLAZA LIGHTING FIXTURE
8	PL	PLAZA LIGHTING FIXTURE	1	PHILIPS	LUMEC	100W	120V	RECESSED	PHILIPS LUMEC PLAZA LIGHTING FIXTURE
9	PL	PLAZA LIGHTING FIXTURE	1	PHILIPS	LUMEC	100W	120V	RECESSED	PHILIPS LUMEC PLAZA LIGHTING FIXTURE
10	PL	PLAZA LIGHTING FIXTURE	1	PHILIPS	LUMEC	100W	120V	RECESSED	PHILIPS LUMEC PLAZA LIGHTING FIXTURE
11	PL	PLAZA LIGHTING FIXTURE	1	PHILIPS	LUMEC	100W	120V	RECESSED	PHILIPS LUMEC PLAZA LIGHTING FIXTURE
12	PL	PLAZA LIGHTING FIXTURE	1	PHILIPS	LUMEC	100W	120V	RECESSED	PHILIPS LUMEC PLAZA LIGHTING FIXTURE
13	PL	PLAZA LIGHTING FIXTURE	1	PHILIPS	LUMEC	100W	120V	RECESSED	PHILIPS LUMEC PLAZA LIGHTING FIXTURE
14	PL	PLAZA LIGHTING FIXTURE	1	PHILIPS	LUMEC	100W	120V	RECESSED	PHILIPS LUMEC PLAZA LIGHTING FIXTURE
15	PL	PLAZA LIGHTING FIXTURE	1	PHILIPS	LUMEC	100W	120V	RECESSED	PHILIPS LUMEC PLAZA LIGHTING FIXTURE
16	PL	PLAZA LIGHTING FIXTURE	1	PHILIPS	LUMEC	100W	120V	RECESSED	PHILIPS LUMEC PLAZA LIGHTING FIXTURE
17	PL	PLAZA LIGHTING FIXTURE	1	PHILIPS	LUMEC	100W	120V	RECESSED	PHILIPS LUMEC PLAZA LIGHTING FIXTURE
18	PL	PLAZA LIGHTING FIXTURE	1	PHILIPS	LUMEC	100W	120V	RECESSED	PHILIPS LUMEC PLAZA LIGHTING FIXTURE
19	PL	PLAZA LIGHTING FIXTURE	1	PHILIPS	LUMEC	100W	120V	RECESSED	PHILIPS LUMEC PLAZA LIGHTING FIXTURE
20	PL	PLAZA LIGHTING FIXTURE	1	PHILIPS	LUMEC	100W	120V	RECESSED	PHILIPS LUMEC PLAZA LIGHTING FIXTURE
21	PL	PLAZA LIGHTING FIXTURE	1	PHILIPS	LUMEC	100W	120V	RECESSED	PHILIPS LUMEC PLAZA LIGHTING FIXTURE
22	PL	PLAZA LIGHTING FIXTURE	1	PHILIPS	LUMEC	100W	120V	RECESSED	PHILIPS LUMEC PLAZA LIGHTING FIXTURE
23	PL	PLAZA LIGHTING FIXTURE	1	PHILIPS	LUMEC	100W	120V	RECESSED	PHILIPS LUMEC PLAZA LIGHTING FIXTURE
24	PL	PLAZA LIGHTING FIXTURE	1	PHILIPS	LUMEC	100W	120V	RECESSED	PHILIPS LUMEC PLAZA LIGHTING FIXTURE
25	PL	PLAZA LIGHTING FIXTURE	1	PHILIPS	LUMEC	100W	120V	RECESSED	PHILIPS LUMEC PLAZA LIGHTING FIXTURE

Product: PHILIPS LUMEC
 Voltage: 120V
 Color: White
 Options: None
 Modified: 08/09/2016

PHILIPS LUMEC
 PHILIPS LUMEC
 PHILIPS LUMEC
 PHILIPS LUMEC



GPLH
 EPA 1.10 sq. ft.
 Weight 31 lbs (14.1 kg)



MILWAUKEE ADJUSTABLE ACCENTS ON A CUSTOM SIGNATURE PLAZA POLICE DESIGN DEVELOPMENT
 - MODULAR UNIT SIMILAR TO UPPER PHOTO WITH INCREASED STANDARD ARCHITECTURAL LIGHT
 - ANGLED ARM BRACKET SIMILAR TO LOWER PHOTO
 - 20'-0" MAX HEIGHT



Header: Luminaire controlled by a dimmer...
 Encoder: Optional system consists of a reflector...
 Mounting: Mounted with two screws...
 Electrical: 100W LED luminaire...
 Note: Due to the dynamic nature of LED technology...
 Philips LED products...
 Luminaires Luminaire 1110
 Total luminaire weight 34.7 lbs



TYPE S11 - MULTI-PURPOSE PLAZA ACCENT POLE

TYPE S6 - PEDESTRIAN POLE AREA LIGHT

TYPE S12 - CITY STANDARD STREET LIGHT WITH CUSTOM POLE



MILWAUKEE ARENA
 1111 N. 4TH STREET
 MILWAUKEE WI

DPD SUBMITTAL

NO.	DATE	DESCRIPTION
1	08.17.2016	ISSUED
2	08.24.2016	REVISED
3	08.09.2016	REVISED



FILE NUMBER: 151653
 ISSUE DATE: 05.09.2016

SITE AREA LIGHTING - PRODUCT CUTSHEETS

POPULOUS HNTB eua

SHEET A1 - 22



MILWAUKEE ARENA
1111 N. 4TH STREET
MILWAUKEE WI

DPD SUBMITTAL

REVISIONS

NO.	DATE	DESCRIPTION
1	05.11.2016	REV. EED
2	05.11.2016	REV. BIED
3	06.09.2016	REV. BIED



FILE NUMBER: 151653
 ISSUE DATE: 05.09.2016

3D VIEW - EAST PLAZA ON 4TH STREET
 VIEW WEST

POPULOUS **HNTB** **euo**

SHEET
 A1 - 24



MILWAUKEE ARENA
1111 N. 4TH STREET
MILWAUKEE WI

DPD SUBMITTAL

REVISIONS

NO.	DATE	DESCRIPTION
1	05.11.2016	REV. EED
2	05.14.2016	REV. BEB
3	06.22.2016	REV. BEB



FILE NUMBER: 151653
 ISSUE DATE: 05.09.2016

3D VIEW - VIEW FROM HIGHLAND
 VIEW EAST

POPULOUS **HNTB** **euo**

SHEET
A1 - 25



MILWAUKEE ARENA
1111 N. 4TH STREET
MILWAUKEE WI

DPD SUBMITTAL

REVISIONS

NO.	DATE	DESCRIPTION
1	03.17.2011	REV. EED
2	07.14.2011	REV. BEED
3	06.22.2011	REV. BEED



FILE NUMBER: 151653
 ISSUE DATE: 05.09.2016

3D VIEW - VIEW FROM 4TH & JUNEAU
 VIEW SOUTH

POPULOUS **HNTB** **eua**

SHEET
 A1 - 26



MILWAUKEE ARENA
1111 N. 4TH STREET
MILWAUKEE WI

DPD SUBMITTAL

REVISIONS

NO.	DATE	DESCRIPTION
1	03.17.2016	REVISED
2	04.04.2016	REVISED
3	05.08.2016	REVISED



FILE NUMBER: 151653
 ISSUE DATE: 05.09.2016

3D VIEW - NORTHWEST ENTRANCE
 VIEW SOUTH



SHEET
 A1 - 27



MILWAUKEE ARENA
1111 N. 4TH STREET
MILWAUKEE WI

DPD SUBMITTAL

REVISIONS

NO.	DATE	DESCRIPTION
1	01.17.2016	REVISED
2	01.24.2016	REVISED
3	05.08.2016	REVISED

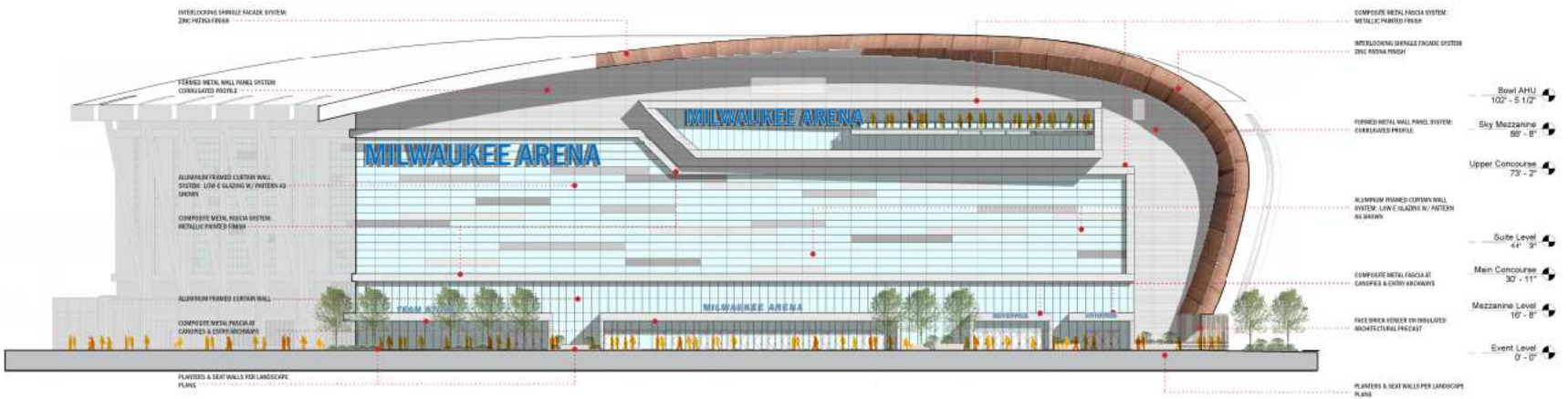


FILE NUMBER: 151653
 ISSUE DATE: 05.09.2016

3D VIEW - 6TH & JUNEAU
 VIEW SOUTH

POPULOUS HNTB eua

SHEET
 A1 - 28



ARENA ELEVATION - EAST / 4TH STREET
1/16" = 1'-0"



MILWAUKEE ARENA
1111 N. 4TH STREET
MILWAUKEE WI

DPD SUBMITTAL

REVISIONS

NO.	DATE	DESCRIPTION
1	01.17.2016	REVISED
2	04.04.2016	REVISED
3	05.08.2016	REVISED



FILE NUMBER: 151653
ISSUE DATE: 05.09.2016

ARENA ELEVATION - EAST



SHEET
A1 - 29



MILWAUKEE ARENA
1111 N. 4TH STREET
MILWAUKEE WI

DPD SUBMITTAL

REVISIONS

NO.	DATE	DESCRIPTION
1	01.17.2016	REVISED
2	04.04.2016	REVISED
3	05.08.2016	REVISED



FILE NUMBER: 151653
ISSUE DATE: 05.09.2016

ARENA ELEVATION - NORTH

POPULOUS HNTB eua

SHEET
A1 - 30

SEE ENLARGED DIMETRIC VIEW FOR DATA

INTERLOCKING OVERHEAD FACADE SYSTEM
ZINC PACTINA FINISH

FORMED METAL WALL PANEL SYSTEM
CORRUGATED PROFILE

ALUMINUM FRAMED CURTAIN WALL SYSTEM: LOW E GLAZING

COMPOSITE METAL FASCIA & COLUMN WRAP
METALLIC PAINTED FINISH

INSULATED METAL VEE-BOARD
LOCATION

VEGETATED SCREEN WALLS
ORNAMENTAL STEEL FRAME & BRICK
PLANTER AT BASE

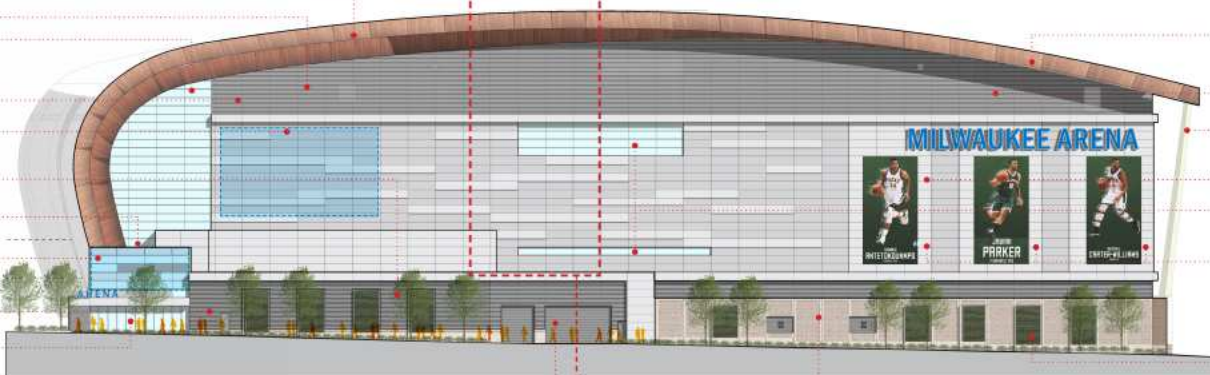
ALUMINUM FRAMED CURTAIN WALL SYSTEM: LOW E GLAZING w/ PARTIAL
AS SHOWN

BULKHEAD MOUNTED LED REED
MESH

WORKER WALL SYSTEM
BRICK FACED PRECAST AT BASE
12'-0" MIN. HEIGHT
12" DEEP CORRUGATED METAL PANEL
SYSTEM ABOVE, METALLIC PAINT FINISH

ALUMINUM FRAMED CURTAIN WALL SYSTEM: LOW E GLAZING

OVERHEAD DOORS AT PARKING



INTERLOCKING OVERHEAD FACADE SYSTEM
ZINC PACTINA FINISH

FORMED METAL WALL PANEL SYSTEM
CORRUGATED PROFILE

COMPOSITE METAL FASCIA & COLUMN WRAP
METALLIC PAINTED FINISH

INSULATED METAL WALL PANEL SYSTEM
METALLIC PAINTED FINISH

ALUMINUM FRAMED CURTAIN WALL SYSTEM: LOW E GLAZING

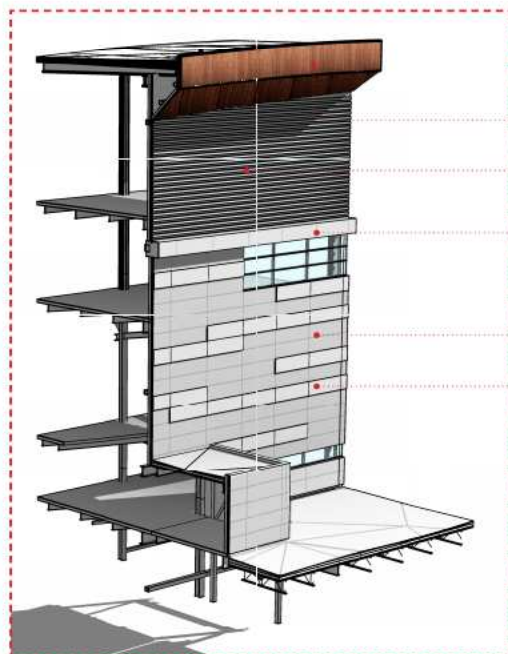
COMPOSITE METAL PANEL BANDING
10" GAP OFFSET 1" FROM BASE
WALL SURFACE BEYOND SIMILAR
TO BONDING/CLASH. SACRIFICE
PLANTER AT BASE

VEGETATED SCREEN WALLS
ORNAMENTAL STEEL FRAME & BRICK
PLANTER AT BASE

FACE BRICK VENEER ON INSULATED
ARCHITECTURAL POSTCAST

- Bowl AHD 102' - 5 1/2"
- Sky Mezzanine 86' - 8"
- Upper Concourses 73' - 2"
- Suite Level 44' - 3"
- Main Concourses 30' - 11"
- Mezzanine Level 16' - 8"
- Event Level 0' - 0"

ARENA ELEVATION - WEST / 6TH STREET
1/16" = 1'-0"



INTERLOCKING OVERHEAD FACADE SYSTEM
ZINC PACTINA FINISH

FORMED METAL WALL PANEL SYSTEM
CORRUGATED PROFILE

COMPOSITE METAL PANEL FACIA SYSTEM
OFFSET 1" FROM FACE OF SURROUNDING WALLS
COLOR 2 (BRIGHT SILVER-METALLIC)

COMPOSITE METAL PANEL SYSTEM
COLOR 2 (BRIGHT SILVER-METALLIC)

COMPOSITE METAL PANEL BANDING
BANDS OFFSET 1" FROM BASE WALL SURFACE
PER PATTERN SHOWN ON ELEVATION
COLOR 1 (BRIGHT SILVER-METALLIC)



MILWAUKEE ARENA
1111 N. 4TH STREET
MILWAUKEE WI

DPD SUBMITTAL

REVISIONS

NO.	DATE	DESCRIPTION
1	01.17.2016	REVISED
2	04.04.2016	REVISED
3	05.06.2016	REVISED

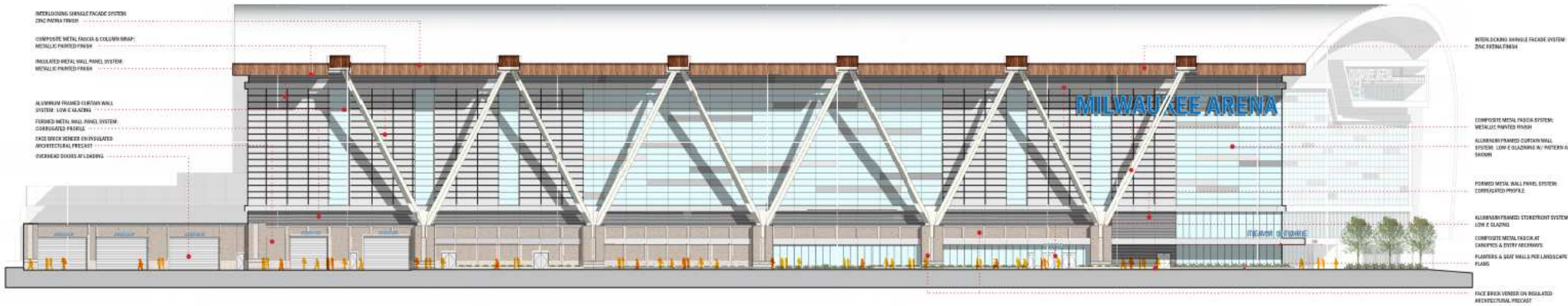


FILE NUMBER: 151653
ISSUE DATE: 05.09.2016

ARENA ELEVATION - WEST

POPULOUS HNTB eua

SHEET
A1 - 31



ARENA ELEVATION - SOUTH / HIGHLAND AVENUE
 1/16" = 1'-0"



MILWAUKEE ARENA
 1111 N. 4TH STREET
 MILWAUKEE WI

DPD SUBMITTAL

REVISIONS

NO.	DATE	DESCRIPTION
1	01.17.2016	REVISED
2	04.04.2016	REVISED
3	05.06.2016	REVISED

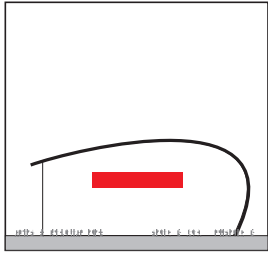


FILE NUMBER: 151653
 ISSUE DATE: 05.09.2016

ARENA ELEVATION - SOUTH



SHEET
 A1 - 32



A1 STADIUM IDENTITY - BUILDING FACADE

Purpose
Project identification on side of arena

Guidelines
Form
Dimensional letters or sign cabinet

Approx. Size
10'-0" w x 7'-6" h x 1'-0" d
Final size & text TBD per sponsorship or naming rights

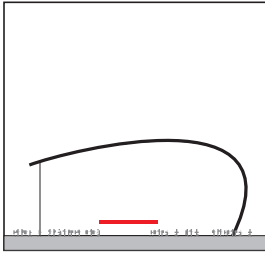
Power/Data Requirements
Electrical

Illumination Requirements
Internal face lit or halo lit

Material, Fabrication & Finish
Fabricated, painted metal sign letters or cabinet w/ translucent face substrate

Installation & Foundation/Support
Sign mounted to building facade, anchored into mullion or building substructure as necessary

Quantity
1



A1.1 STADIUM IDENTITY - MONUMENT/LETTERS

Purpose
Project identification on site (plaza)

Guidelines
Form
Dimensional letters or sign cabinet

Approx. Size
6'-0" h x 1'-6" d letters
Final size & text TBD per sponsorship or naming rights

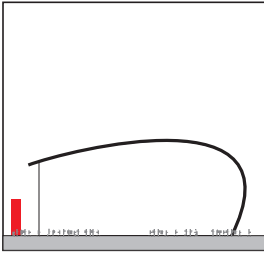
Power/Data Requirements
Electrical

Illumination Requirements
Internal face lit or halo lit

Material, Fabrication & Finish
Fabricated, painted metal sign letters or cabinet w/ translucent face substrate, painted returns

Installation & Foundation/Support
Sign mounted to ground & foundation

Quantity
1



A2 STADIUM IDENTITY - MONUMENT/LETTERS
SIGNAGE LOCATION

Purpose
Project identification on site (plaza)

Guidelines
Form
Dimensional letters or sign cabinet

Approx. Size
6'-0" w x 30'-0" h x 1'-6" d
Final size & text TBD per sponsorship or naming rights

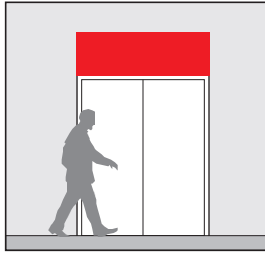
Power/Data Requirements
Electrical

Illumination Requirements
Internal face lit or halo lit

Material, Fabrication & Finish
Fabricated, painted metal sign letters or cabinet w/ translucent face substrate, painted returns

Installation & Foundation/Support
Sign mounted to ground & foundation

Quantity
1



A3 ENTRANCE IDENTITY - GENERAL

Purpose
Entrance identification

Guidelines
Form
Dimensional letters

Approx. Size
1'-0" h x 4'-d letters
Final size & text TBD per sponsorship or naming rights

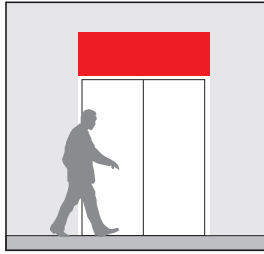
Power/Data Requirements
Electrical

Illumination Requirements
Internal face lit or halo lit

Material, Fabrication & Finish
Fabricated, brushed finish metal sign letters w/ face or halo illumination

Installation & Foundation/Support
Sign mounted to entrance facade, anchored into mullion or building substructure as necessary

Quantity
TBD



A4 ENTRANCE IDENTITY - VIP

Purpose
Entrance identification

Guidelines
Form
Dimensional letters

Approx. Size
1'-0" h x 4'-d letters
Final size & text TBD per sponsorship or naming rights

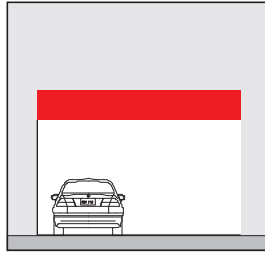
Power/Data Requirements
Electrical

Illumination Requirements
Internal face lit or halo lit

Material, Fabrication & Finish
Fabricated, brushed finish metal sign letters w/ face or halo illumination

Installation & Foundation/Support
Sign mounted to entrance facade, anchored into mullion or building substructure as necessary

Quantity
TBD



A6 PARKING ENTRY - OVERHEAD

Purpose
Entrance identification

Guidelines
Form
Dimensional letters or sign cabinet

Approx. Size
1'-0" h x 6'-d letters

Power/Data Requirements
Electrical

Illumination Requirements
Internal face lit or halo lit

Material, Fabrication & Finish
Fabricated, brushed finish metal sign letters or cabinet w/ translucent face substrate

Installation & Foundation/Support
Sign mounted to entrance facade, anchored into mullion or building substructure as necessary

Quantity
1



MILWAUKEE ARENA
1111 N. 4TH STREET
MILWAUKEE WI

DPD SUBMITTAL

REVISIONS

NO.	DATE	DESCRIPTION
1	05/15/17	REVISED
2	06/23/17	REVISED
3	06/23/17	REVISED



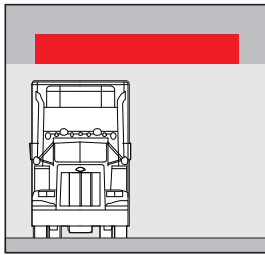
FILE NUMBER: 151653
ISSUE DATE: 05.09.2016

SIGNAGE TYPES

POPULOUS HNTB eua

SHEET
A1 - 33

EXTERIOR IDENTIFICATION



A7 LOADING DOCK IDENTITY

Purpose
Entrance identification

Guidelines
Form
Dimensional letters or sign cabinet

Approx. Size
1'-0" h x 6'-0" d letters

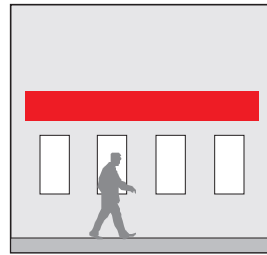
Power/Data Requirements
Electrical

Illumination Requirements
Internal face lit or halo lit

Material, Fabrication & Finish
Fabricated, brushed finish metal sign letters or cabinet w/ translucent face substrate

Installation & Foundation/Support
Sign mounted to entrance facade, anchored into mullion or building substructure as necessary

Quantity
1



A10 TICKET OFFICE IDENTITY

Purpose
Ticket office identification

Guidelines
Form
Dimensional letters

Approx. Size
1'-0" h x 4'-0" d letters

Power/Data Requirements
Electrical

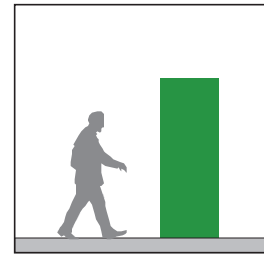
Illumination Requirements
Internal face lit or halo lit

Material, Fabrication & Finish
Fabricated, brushed finish metal sign letters, w/ face or halo illumination

Installation & Foundation/Support
Sign mounted to building facade, anchored into mullion or building substructure as necessary

Quantity
TBD

EXTERIOR DIRECTIONAL



B2 PEDSTRIAN DIRECTION - FREESTANDING

Purpose
Direction around site

Guidelines
Form
Dimensional sign cabinet

Approx. Size
3'-6" w x 10'-0" h x 1'-6" d

Power/Data Requirements
Electrical

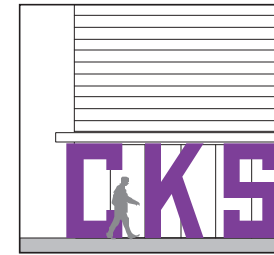
Illumination Requirements
Internal illumination

Material, Fabrication & Finish
Fabricated, painted metal sign cabinet w/ cut out pushed through letters lit internally via LEDs

Installation & Foundation/Support
Sign mounted to ground & foundation

Quantity
TBD

EXTERIOR AMENITY



E1 TEAM STORE LETTERS

Purpose
Store Experience

Guidelines
Form
Sculptural letters

Approx. Size
12'-0" h x 2'-0" d letters

Power/Data Requirements
N/A

Illumination Requirements
N/A

Material, Fabrication & Finish
Fabricated, painted metal letters

Installation & Foundation/Support
Mounted to entrance facade, anchored into mullion or building substructure as necessary

Quantity
1



MILWAUKEE ARENA
1111 N. 4TH STREET
MILWAUKEE WI

DPD SUBMITTAL

REVISIONS

NO.	DATE	DESCRIPTION
1	06/12/2017	REVISED
2	06/14/2017	REVISED
3	06/22/2017	REVISED

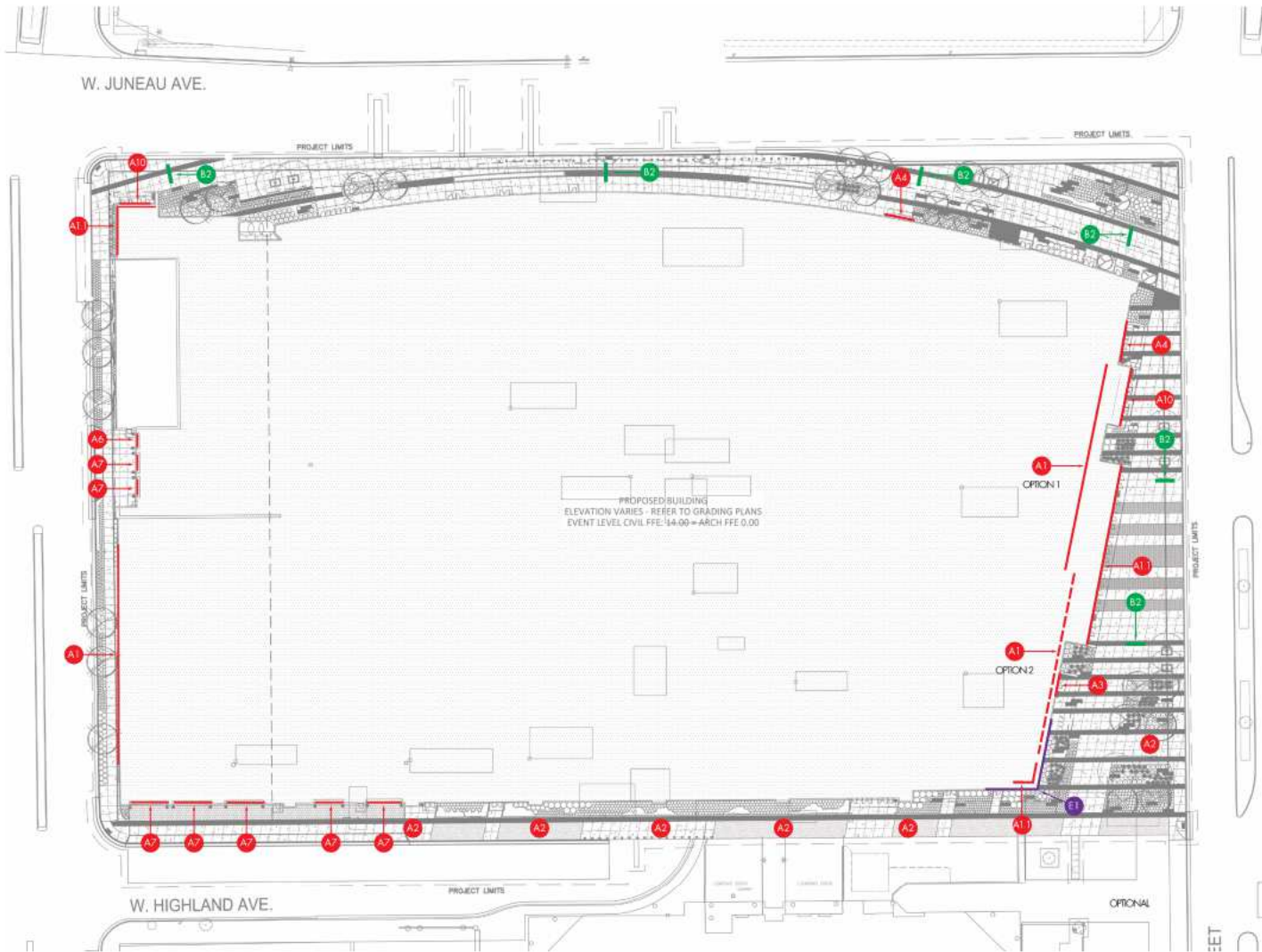


FILE NUMBER: 151653
ISSUE DATE: 05.09.2016

SIGNAGE TYPES

POPULOUS HNTB eua

SHEET
A1 - 34



- IDENTITY**
- EXTERIOR
 - A1 STADIUM IDENTITY - BUILDING FACADE
 - A1.1 STADIUM IDENTITY - CANOPY LETTERS
 - A2 STADIUM IDENTITY - FREESTANDING
 - A3 ENTRANCE IDENTITY - GENERAL
 - A4 ENTRANCE IDENTITY - VIP
 - A6 PARKING IDENTITY - OVERHEAD
 - A7 LOADING DOCK IDENTITY
 - A10 TICKET OFFICE IDENTITY

- DIRECTION**
- EXTERIOR
 - B2 PEDESTRIAN DIRECTION - FREESTANDING

- AMENITY**
- EXTERIOR
 - E1 TEAM STORE LETTERS



MILWAUKEE ARENA
 1111 N. 4TH STREET
 MILWAUKEE WI

DPD SUBMITTAL

REVISIONS

NO.	DATE	DESCRIPTION
1	01.17.2016	REVISED
2	04.14.2016	REVISED
3	05.06.2016	REVISED

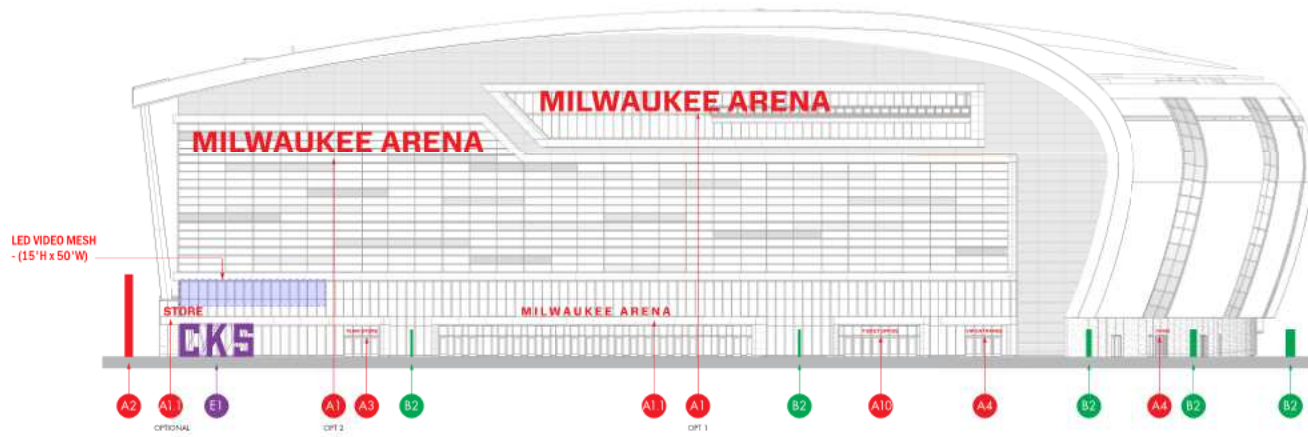


FILE NUMBER: 151653
 ISSUE DATE: 05.09.2016

SIGN LOCATION PLAN



SHEET
 A1 - 35



ARENA ELEVATION - EAST / 4TH STREET
N.T.S.



MILWAUKEE ARENA
1111 N. 4TH STREET
MILWAUKEE WI

DPD SUBMITTAL

REVISIONS

NO.	DATE	DESCRIPTION
1	03.15.2016	REVISED
2	07.14.2016	REVISED
3	06.22.2016	REVISED

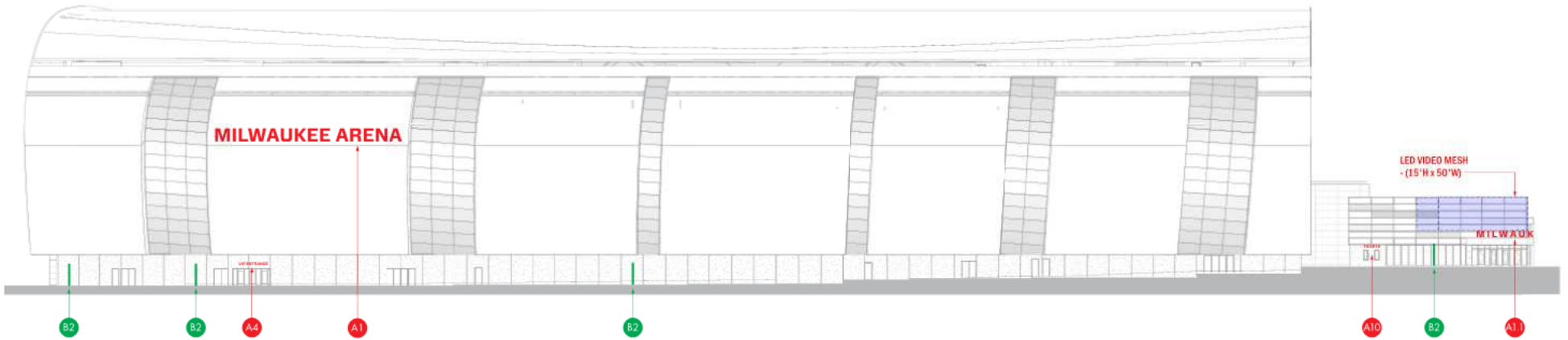


FILE NUMBER: 151653
ISSUE DATE: 05.09.2016

SIGNAGE ELEVATION - EAST / 4TH STREET

POPULOUS HNTB eua

SHEET
A1 - 36



ARENA ELEVATION - NORTH / JUNEAU AVENUE
N.T.S.



MILWAUKEE ARENA
1111 N. 4TH STREET
MILWAUKEE WI

DPD SUBMITTAL

REVISIONS

NO.	DATE	DESCRIPTION
1	03.15.2016	REVISED
2	07.14.2016	REVISED
3	06.22.2016	REVISED

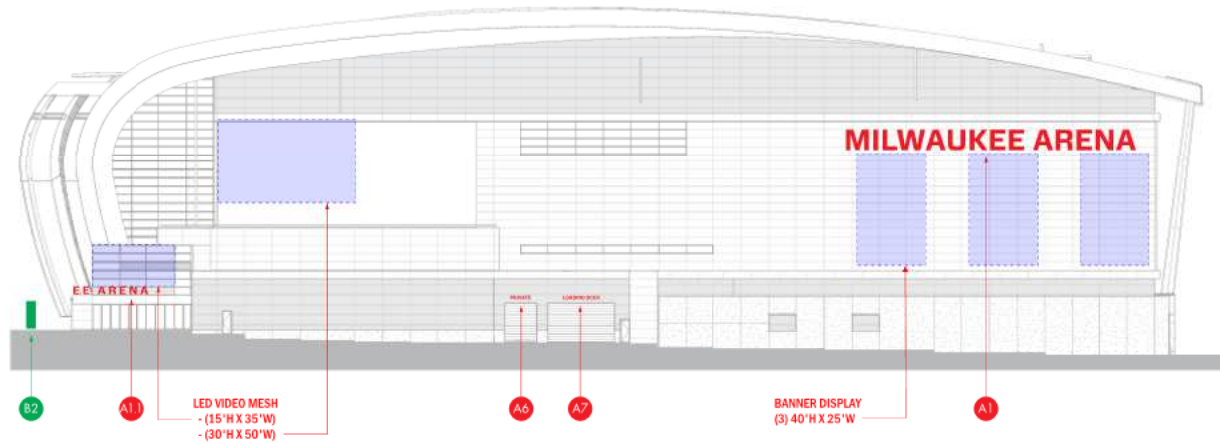


FILE NUMBER: 151653
ISSUE DATE: 05.09.2016

SIGNAGE ELEVATION - NORTH / JUNEAU AVENUE

POPULOUS HNTB eua

SHEET
A1 - 37



ARENA ELEVATION - WEST / 6TH STREET
N.T.S.



MILWAUKEE ARENA
1111 N. 4TH STREET
MILWAUKEE WI

DPD SUBMITTAL

REVISIONS

NO.	DATE	DESCRIPTION
1	03.15.16	REVISED
2	07.14.16	REVISED
3	06.22.16	REVISED

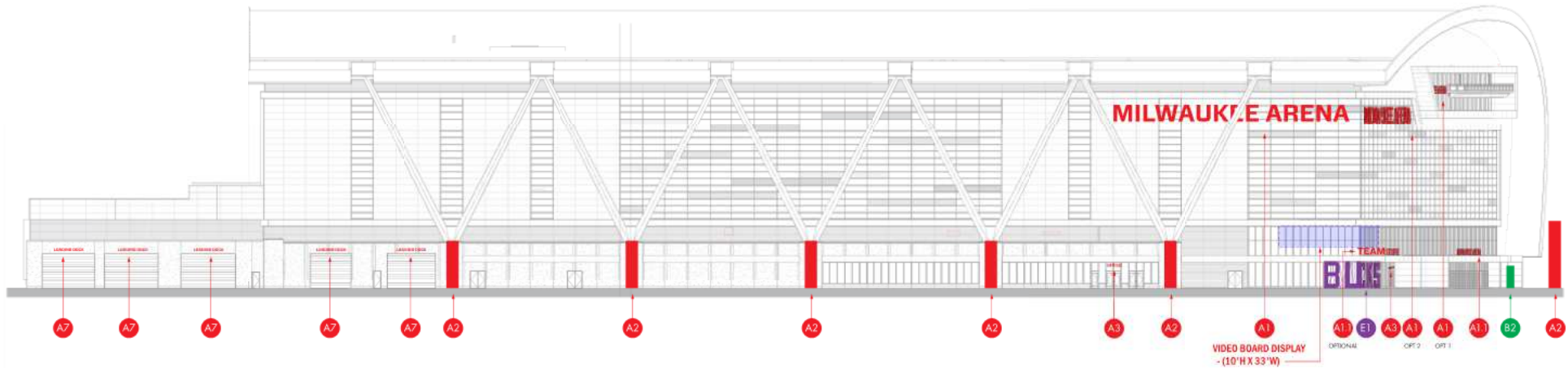


FILE NUMBER: 151653
ISSUE DATE: 05.09.2016

SIGNAGE ELEVATION - WEST / 6TH STREET

POPULOUS HNTB eua

SHEET
A1 - 38



ARENA ELEVATION - SOUTH / HIGHLAND AVENUE
N.T.S.



MILWAUKEE ARENA
1111 N. 4TH STREET
MILWAUKEE WI

DPD SUBMITTAL

REVISIONS

NO.	DATE	DESCRIPTION
1	03.15.2016	REVISED
2	07.14.2016	REVISED
3	06.22.2016	REVISED

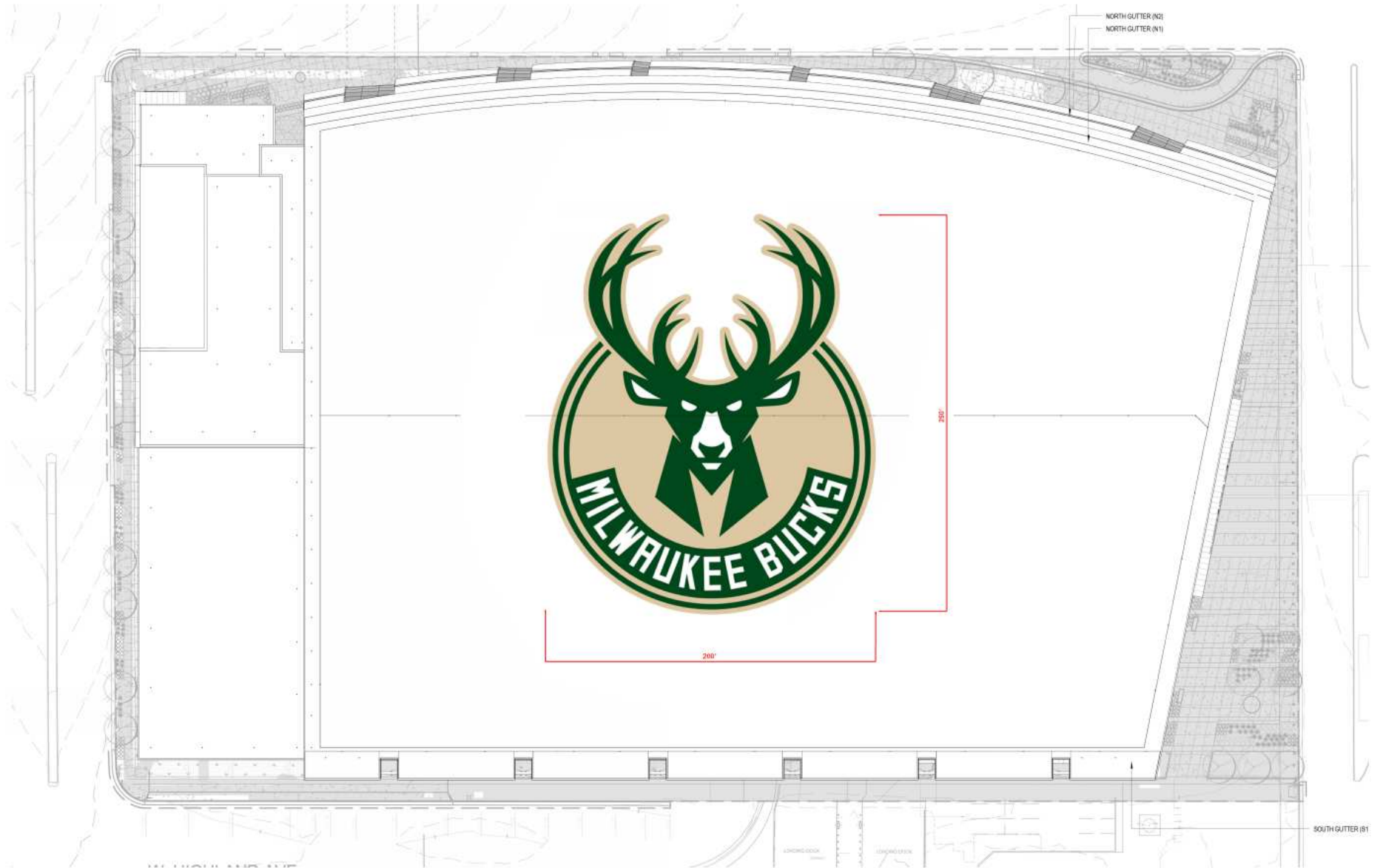


FILE NUMBER: 151653
ISSUE DATE: 05.09.2016

SIGNAGE ELEVATION - SOUTH / HIGHLAND AVENUE

POPULOUS HNTB eua

SHEET
A1 - 39



MILWAUKEE ARENA
1111 N. 4TH STREET
MILWAUKEE WI

DPD SUBMITTAL

REVISIONS

NO.	DATE	DESCRIPTION
1	01.17.2016	REVISED
2	01.04.2016	REVISED
3	05.08.2016	REVISED

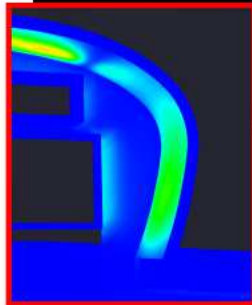
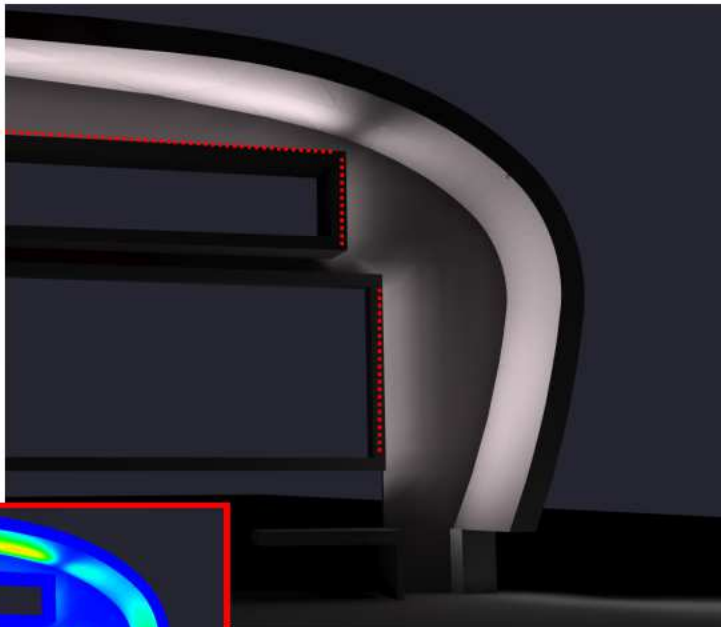


FILE NUMBER: 151653
 ISSUE DATE: 05.09.2016

ROOF SIGN PLAN

POPULOUS | HNTB | eua

SHEET
 A1 - 40



WEST FACADE BROW CONCEPT

FEATURES AND BENEFITS

Physical :

- Low ripple corner extruded aluminum housing
- Available in 1', 2', 3' or 4' sections
- Electrolytically applied polymer powder coat finish
- Machined aluminum end caps and silicone gaskets
- One less steel fastener
- Standard weight frosted acrylic output, frosted lead
- Clear tempered glass
- Asymmetric output (asymmetric, 10° x 60°, 30° x 60° or 60° x 60° optics)
- IP65
- R02 rated (asymmetric, wettable lens is R05 rated)
- Meets 2016 ASHRAE 90.1-2016 standard for bridge applications

Performance :

- Minimum life (L70 2%) @ 1000 foot (30m) distance (DWH full output, 4' unit, 10° x 60° optic)
- Dynamic Warm variable color temperature: 12 LEDs/ft (4x 2700K, 4x 2700K, 4x 3000K)
- Dynamic White variable color temperature: 12 LEDs/ft (4x 2700K, 4x 4000K, 4x 6500K)
- Lumen maintenance L70 @ 25°C: 120,000 hrs
- Resolution per foot or per fixture (dependent with LumenVS software & RDM)
- Lumen measurements comply with ILM / JY - OS standard
- Operating temperature: -20° C to 50° C (1/8 to 122°F)

Electrical :

- Low voltage fixtures for 100 to 277V
- Power and data in 1 cable (P1 & S)
- Up to 64 feet with 1 power & data lead
- Standard 10A / 3in cord
- 1725W/ft
- Dimming options: dim to warm via 0-10V (DMW only), DMW/RDM enabled dim to warm via single channel (DMW only) or DMW/RDM enabled 3 channel color temperature control



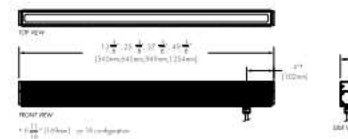
10' unit	10' Output (ft)	Intensity (peak cd)	Power (W)	CCP (ft)
DMW	0.144	0.260	10	0.600
DMW	0.500	11.000	60	6.000

Dim to Warm via DMW/RDM

DMW	2.000	2.801	10	2.300
-----	-------	-------	----	-------

Dim to Warm via 0-10V

DMW	2.000	2.801	10	2.300
-----	-------	-------	----	-------



*Asymmetric wettable lens is R05 rated.
 ** Use only when required to self-apply and back channel. This option is not required for normal outdoor exposure!

1/9 | Copyright Lumenpulse 2016 | 1-877-207-2022 | 5-year limited warranty.
 1725 Milwaukee, Suite 1000 | P.O. Box 20101 | Contact: www.lumenpulse.com

lumenpulse



TYPE S4 - GREEN SCREEN WALLS



MILWAUKEE ARENA
 1111 N. 4TH STREET
 MILWAUKEE WI

DPD SUBMITTAL

REVISIONS

NO.	DATE	DESCRIPTION
1	01.17.2016	REVISED
2	04.04.2016	REVISED
3	05.06.2016	REVISED



FILE NUMBER: 151653
 ISSUE DATE: 05.09.2016

FACADE FEATURE LIGHTING CONCEPTS - WEST ELEVATION

POPULOUS | HNTB | eua

SHEET
 A1 - 42

