



Certificate of Appropriateness

Milwaukee Historic Preservation Commission/841 N Broadway/Milwaukee, WI 53202/phone 414-286-5712

Property	3001 N. 41st St / 3000 N. Sherman Blvd, Sherman Park	Sherman Boulevard HD
Description of work	Landscape and amenity renovations including replacement of the splash pad per attached drawings.	
Date issued	4/15/25	

Under the provisions of Section 320-21 (11) and (12) of the Milwaukee Code of Ordinances, the Milwaukee Historic Preservation Commission has granted a certificate of appropriateness for the work listed above. The work was found to be consistent with preservation guidelines. The following conditions apply to this certificate of appropriateness:

N/A

All work must be done in a craftsman-like manner. Staff must approve any changes or additions to this certificate before work begins. Work that is not completed in accordance with this certificate may be subject to correction orders or citations. If you require technical assistance, please contact Historic Preservation staff as follows: Phone: (414) 286-5712 E-mail: hpc@milwaukee.gov.

Permits and timeline

You are responsible for determining if permits are required and obtaining them prior to commencing work. Consult the Development Center on the web or by telephone for details www.milwaukee.gov/lms (414) 286-8210. If permits are not required, work must be completed within one year of the date this certificate was issued. If permits are required, permits must be obtained within one year of the date this certificate was issued.

City of Milwaukee Preservation Staff

28 pages follow

MARY RYAN BOYS & GIRLS CLUB

SITE IMPROVEMENTS

SHERMAN PARK, 3000 N SHERMAN BLVD.
MILWAUKEE, WI 53210

OWNER

MILWAUKEE COUNTY PARKS
9480 WATERTOWN PLANK RD.
WAUWATOSA, WI 53226
P: 414-257-7275
WWW.COUNTY.MILWAUKEE.GOV/EN/PARKS

GENERAL CONTRACTOR

VJS CONSTRUCTION SERVICES
W233 N2847 ROUNDY CIRCLE WEST
PEWAUKEE, WI 53072
P: 262.542.9000
WWW.VJSCS.COM

ARCHITECT

KATHERINE KAWCZYNSKI
VJS CONSTRUCTION SERVICES
W233 N2847 ROUNDY CIRCLE WEST
PEWAUKEE, WI 53072
P: 262.542.9000
WWW.VJSCS.COM

CIVIL ENGINEER

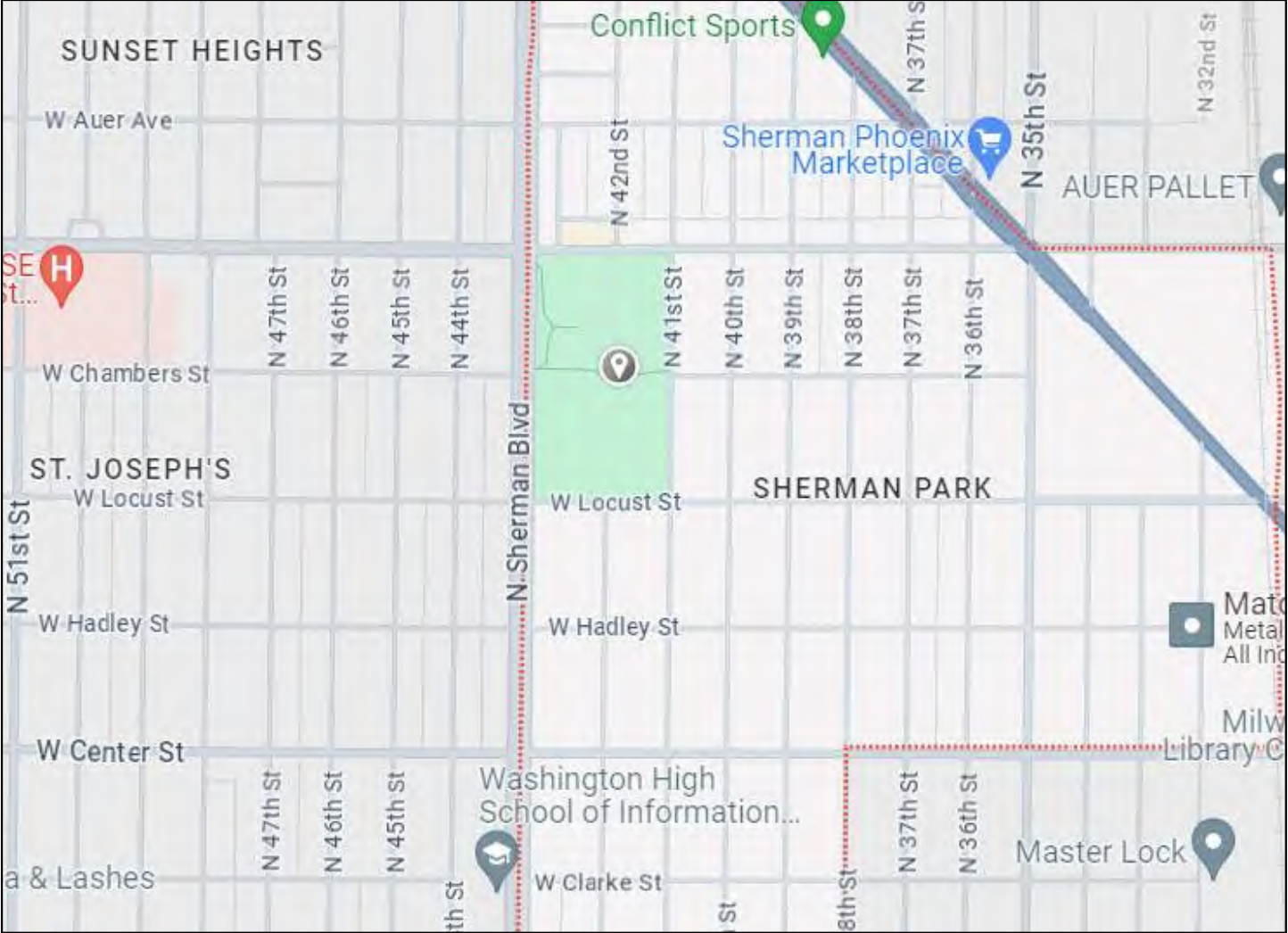
ENDPOINT SOLUTIONS
6871 S. LOVERS LANE
FRANKLIN, WI 53132
P: 414.427.1200

ELECTRICAL ENGINEER

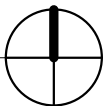
FLITEWAY TECHNOLOGIES
4850 S. PENNSYLVANIA AVE. SUITE 100
CUDAHY, WI 53110
P: 414.483.5600

SPLASH PAD CONSULTANT

DESIGN STUDIO BY CRS
807 LIBERTY DR #101
VERONA, WI 53593
P: 877.896.8442



PROJECT LOCATION
N.T.S.



SHEET INDEX	
T1.01	TITLE SHEET
C1	PRE-CONSTRUCTION CONDITIONS NORTH
C2	PRE-CONSTRUCTION CONDITIONS SOUTH
C3	DEMOLITION PLAN NORTH
C4	DEMOLITION PLAN SOUTH
C5	PROPOSED SITE LAYOUT NORTH
C6	PROPOSED SITE LAYOUT SOUTH
C7	PROPOSED SITE DETAIL NORTH
C8	PROPOSED GRADING DETAIL NORTH
C9	PROPOSED UTILITY DETAIL NORTH
C10	EROSION CONTROL NOTES & DETAILS
C11	GENERAL CONSTRUCTION NOTES
C12	CONSTRUCTION DETAILS
E1	ELECTRICAL NOTES & SYMBOLS
E2	ELECTRICAL SINGLE LINE
E3	ELECTRICAL SITE LAYOUT NORTH
E4	ELECTRICAL SITE LAYOUT SOUTH
E5	ELECTRICAL SCHEDULES & DETAILS
E6	LIGHTING CONTROL PANEL SCHEMATIC & DETAILS
M1	SPLASH PAD FEATURES
M2	SPLASH PAD DETAILS
M3	SPLASH PAD DETAILS
M4	SPLASH PAD DETAILS
A-001	SITE LAYOUT
PE-001	PLUMBING & ELECTRICAL LAYOUT
AC 1.03	ENLARGED SITE PLAN
AC 1.04	DUMPSTER ENCLOSURE
AC 1.05	SEATING & FENCE DETAILS
28	



MARY RYAN BOYS & GIRLS CLUB
SITE IMPROVEMENTS

SHERMAN PARK, 3000 N SHERMAN BLVD.
MILWAUKEE, WI 53210

DRAWINGS AND SPECIFICATIONS AS INSTRUMENTS OF SERVICE ARE THE PROPERTY OF VJS CONSTRUCTION SERVICES. THE ARCHITECT/ENGINEER ASSUMES NO RESPONSIBILITY OR LIABILITY FOR THE USE OF THESE PLANS FOR ANY PROJECT OTHER THAN SPECIFICALLY AUTHORIZED BY THEM AND SIGNED AND SEALED FOR SUCH SPECIFIC LOCATION IN THE STATE, PROVINCE, OR TERRITORY SHOWN ON THE SEAL.

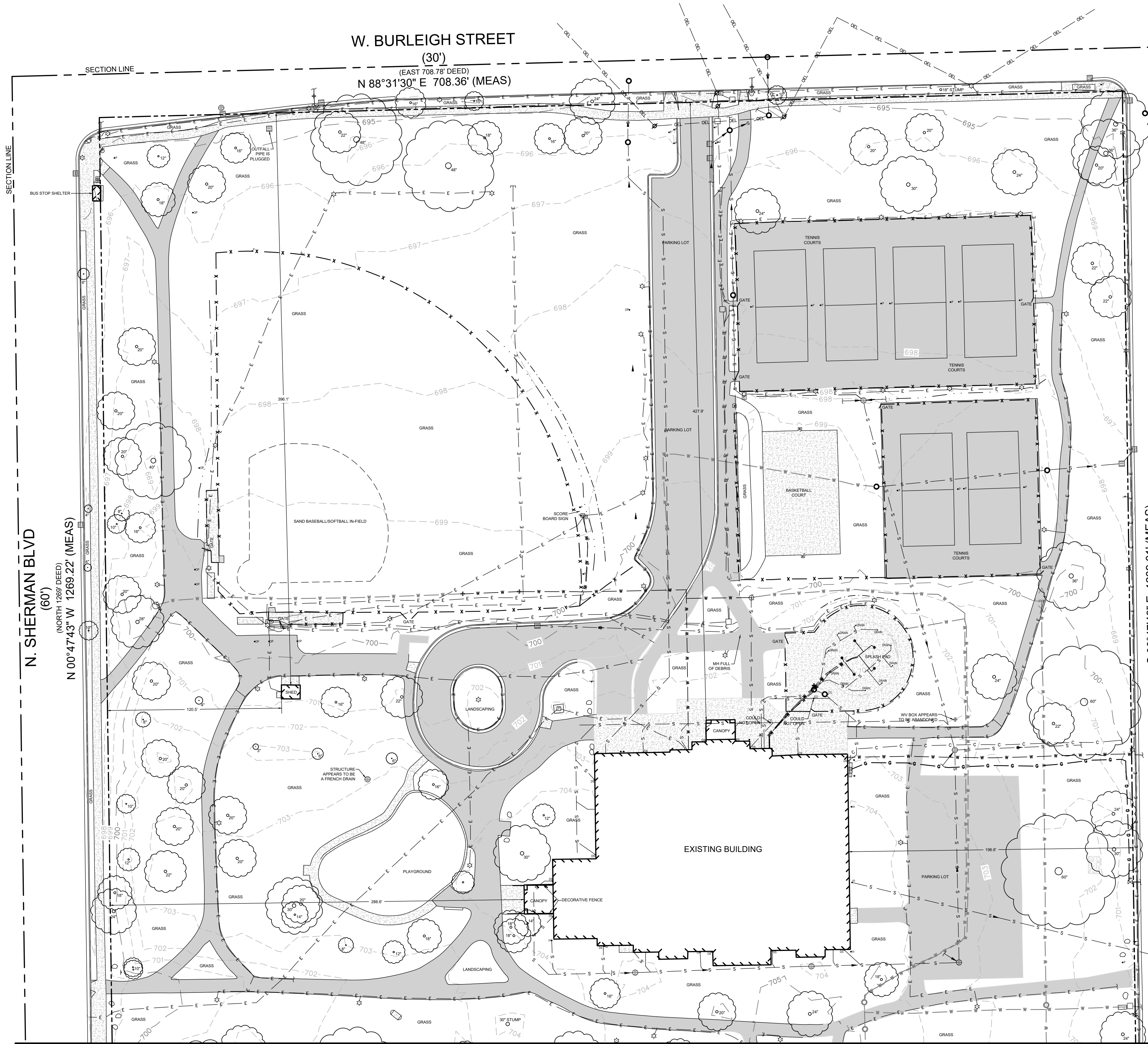
ISSUANCE & REVISIONS

PROJECT NUMBER 8230073
PROJECT ISSUED 09/30/2024
DRAWN BY DJM
CHECKED BY KAK
SCALE N.T.S.

TITLE SHEET

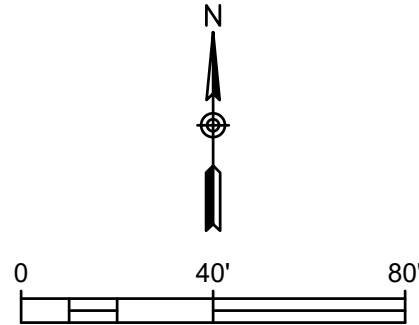
T1.01

Sep 30, 2024 12:58pm PLOTTED BY: jheinenen, SAVED BY: jheinenen
P:\VJS - 525\028 - Sherman Park-Boys and Girls Club CAD\028-002 Civil Design\Shit CI_525-028-002 Pre-Construction Conditions - North.dwg Layout1
IMAGES: T:\Template Forms\CADD\Logos\Endpoint Solutions HI-Res.jpg
XREFS: \Survey Basemap-VJS Sherman Park.dwg; \22x34 Border Sherman Park.dwg



- APPROXIMATE PROPERTY LINE
BUILDING
PAVEMENT/CONCRETE/EDGE OF GRASS
SAND/GRAVEL
TOE OF SLOPE/SWALE
TOP OF SLOPE
CHAINLINK FENCE UNLESS OTHERWISE NOTED
OVERHEAD ELECTRIC LINE
UNDERGROUND COMMUNICATIONS
UNDERGROUND ELECTRIC
GAS LINE
SEWER LINE (SANITARY/STORM)
ASSUMED ABANDONED WATER LINE
WATER MAIN / WATER SERVICE
MAJOR CONTOUR, (5' INTERVAL)
MINOR CONTOUR, (1' INTERVAL)
ASPHALT
BRICK
CONCRETE
LARGE ROCK
BOLLARD
CLEAN OUT
DOWNSPOUT
POSSIBLE MONITORING WELL
OLD POST
POST
GAS VALVE
SIGN
SPRINKLER HEAD
WATER VALVE
HYDRANT
ELECTRIC VAULT
STORM SEWER INLET/CATCH BASIN
STORM SEWER MANHOLE/STRUCTURE
SANITARY/STORM MANHOLE
LIGHT POLE
UTILITY POLE
COMMUNICATIONS PEDESTAL/BOX
ELECTRIC PEDESTAL/BOX OR ELECTRIC METER
GAS METER
HAND HOLE STRUCTURE
EMERGENCY TELEPHONE
POLE-MOUNTED TRANSFORMER
PAD-MOUNTED TRANSFORMER
END OF UTILITY LOCATE MARKING
END OF UTILITY
DECIDUOUS TREE
CONIFEROUS TREE OR BUSH

- NOTES:
1. SURVEY FIELD WORK PERFORMED BY ENDPOINT SOLUTIONS CORP ON 10/17/2023, 10/18/2023 AND 10/19/2023 USING SURVEY GRADE GPS AND ROBOTIC TOTAL STATION.
 2. COORDINATES ARE BASED ON NAD 83 WISCONSIN STATE PLANE, SOUTH ZONE, US FOOT. VERTICAL DATUM IS NAVD 88.
 3. BEARINGS REFER TO THE WEST LINE OF THE NW 1/4 SECTION 13-21 AS N47°47'45"W.
 4. ALL UTILITIES SHOWN ARE APPROXIMATE AND SHALL BE FIELD VERIFIED PRIOR TO SITE DEVELOPMENT AND CONSTRUCTION ACTIVITIES.
 5. ASSUMED ABANDONED WATER LINES ARE SHOWN PER PRIVATE LOCATOR. LINES COULD STILL BE ACTIVE BUT UNKNOWN.
 6. TREE SIZES ARE NOTED AND APPROXIMATE.



NOTES:
CONTACT PARKS FOR UTILITY LOCATE PRIOR TO DIGGERS HOTLINE AT PARKSHOTLINE@MILWAUKEECOUNTYWI.GOV 5 BUSINESS DAYS TO CLEAR
CONTACT THE CITY ON QUALIFIED SUBS TO WORK ON GRID

Endpoint Solutions

6871 S. LOVERS LANE
FRANKLIN, WI 53132
PHONE: (414) 427-1200

THE BOYS AND GIRLS CLUB OF WISCONSIN

PRE-CONSTRUCTION CONDITIONS

NORTH

SHERMAN PARK, 3000 N. SHERMAN BLVD
MILWAUKEE WISCONSIN 53210

DRAWN BY: NWD/JAH
CHECKED BY: NWD
APPROVED BY: JAH

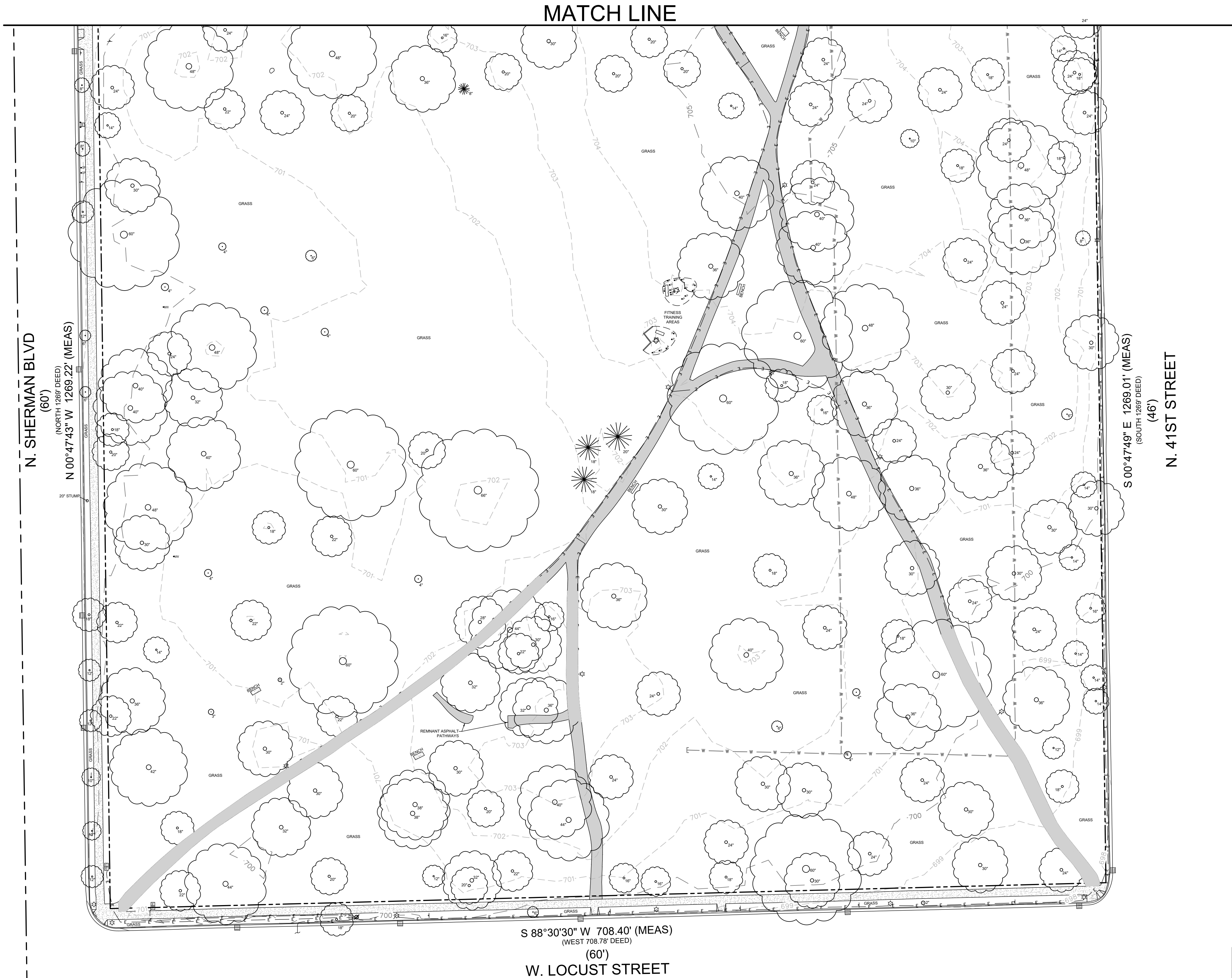
DATE: 09/30/2024

PROJECT NO.
525-028-002

SHEET NO.
C1

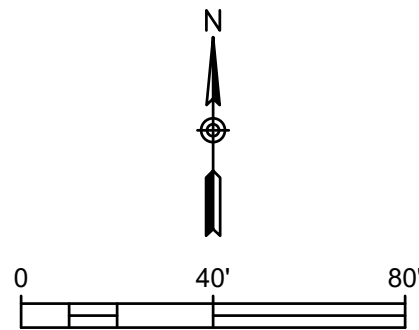
REV	DATE
6	
5	
4	
3	
2	
1	
0	

Sep 30, 2024 12:59pm - PLOTTED BY: jheinenen, SAVED BY: jheinenen
P:\VUS - 525\028 - Sherman Park-Boys and Girls Club\CAD\028-002 Civil Design\Shit C2_525-028-002 Pre-Construction Conditions - South.dwg Layout1
IMAGES: T:\Template Forms\CADD\Logos\Endpoint\Endpoint Solutions HI-Res.jpg;
XREFS: \Survey Basemap-VUS Sherman Park.dwg; \22x34 Border Sherman Park.dwg



---	APPROXIMATE PROPERTY LINE
---	BUILDING
---	PAVEMENT/CONCRETE/EDGE OF GRASS
---	SAND/GRAVEL
---	TOE OF SLOPE/SWALE
---	TOP OF SLOPE
---	CHAINLINK FENCE UNLESS OTHERWISE NOTED
---	OVERHEAD ELECTRIC LINE
---	UNDERGROUND COMMUNICATIONS
---	UNDERGROUND ELECTRIC
---	GAS LINE
---	SEWER LINE (SANITARY/STORM)
---	ASSUMED ABANDONED WATER LINE
---	WATER MAIN / WATER SERVICE
---	MAJOR CONTOUR, (5' INTERVAL)
---	MINOR CONTOUR, (1' INTERVAL)
---	ASPHALT
---	BRICK
---	CONCRETE
---	LARGE ROCK
---	BOLLARD
---	CLEAN OUT
---	DOWNSPOUT
---	POSSIBLE MONITORING WELL
---	OLD POST
---	POST
---	GAS VALVE
---	SIGN
---	SPRINKLER HEAD
---	WATER VALVE
---	HYDRANT
---	ELECTRIC VAULT
---	STORM SEWER INLET/CATCH BASIN
---	STORM SEWER MANHOLE/STRUCTURE
---	SANITARY/STORM MANHOLE
---	LIGHT POLE
---	UTILITY POLE
---	COMMUNICATIONS PEDESTAL/BOX
---	ELECTRIC PEDESTAL/BOX OR ELECTRIC METER
---	GAS METER
---	HAND HOLE STRUCTURE
---	EMERGENCY TELEPHONE
---	POLE-MOUNTED TRANSFORMER
---	PAD-MOUNTED TRANSFORMER
---	END OF UTILITY LOCATE MARKING
---	END OF UTILITY
---	DECIDUOUS TREE
---	CONIFEROUS TREE OR BUSH

- NOTES:
- SURVEY FIELD WORK PERFORMED BY ENDPOINT SOLUTIONS CORP ON 10/17/2023, 10/18/2023 AND 10/19/2023 USING SURVEY GRADE GPS AND ROBOTIC TOTAL STATION.
 - COORDINATES ARE BASED ON NAD 83 WISCONSIN STATE PLANE, SOUTH ZONE, US FOOT. VERTICAL DATUM IS NAVD 88.
 - BEARINGS REFER TO THE WEST LINE OF THE NW 1/4 SECTION 13-7-21 AS N47°47'45\"/>



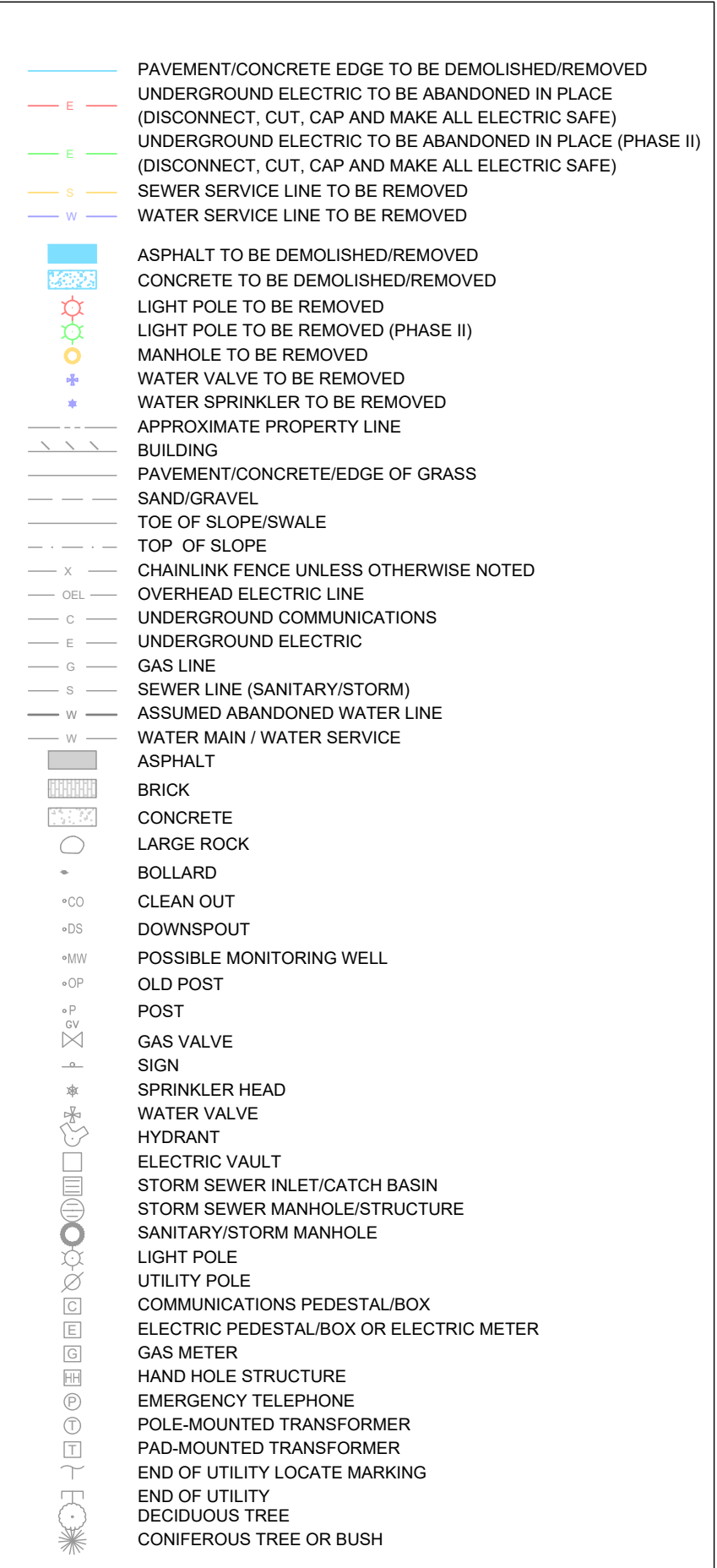
NOTES:
CONTACT PARKS FOR UTILITY LOCATE PRIOR TO DIGGERS HOTLINE AT PARKSHOTLINE@MILWAUKEECOUNTYWI.GOV 5 BUSINESS DAYS TO CLEAR
CONTACT THE CITY ON QUALIFIED SUBS TO WORK ON GRID

THE BOYS AND GIRLS CLUB OF WISCONSIN	
PRE-CONSTRUCTION CONDITIONS	
SOUTH	
SHERMAN PARK, 3000 N. SHERMAN BLVD	
MILWAUKEE WISCONSIN 53210	
DRAWN BY: NWD/JAH	
CHECKED BY: NWD	
APPROVED BY: JAH	
DATE: 09/30/2024	
PROJECT NO. 525-028-002	
SHEET NO. C2	

Endpoint Solutions

6871 S. LOVERS LANE
FRANKLIN, WI 53132
PHONE: (414) 427-1200

REV	DATE
6	
5	
4	
3	
2	
1	
0	



1. SURVEY FIELD WORK PERFORMED BY ENDPOINT SOLUTIONS CORP ON 10/17/2023, 10/18/2023 AND 10/19/2023 USING SURVEY GRADE GPS AND ROBOTIC TOTAL STATION.
2. COORDINATES ARE BASED ON NAD 83 WISCONSIN STATE PLANE, SOUTH ZONE, US FOOT. VERTICAL DATUM IS NAVD 88.
3. BEARINGS REFER TO THE WEST LINE OF THE NW 1/4 SECTION 12, T4N, R47E, S4E.
4. ALL UTILITIES SHOWN ARE APPROXIMATE AND SHALL BE FIELD VERIFIED PRIOR TO SITE DEVELOPMENT AND CONSTRUCTION ACTIVITIES.
5. ASSUMED ABANDONED WATER LINES ARE SHOWN PER PRIVATE LOCATOR. LINES COULD STILL BE ACTIVE BUT UNKNOWN.
6. TREE SIZES ARE NOTED AND APPROXIMATE.

NOTES:
CONTACT PARKS FOR UTILITY LOCATE PRIOR TO DIGGERS HOTLINE AT
PARKSHOTLINE@MILWAUKEECOUNTYWI.GOV 5 BUSINESS DAYS TO CLEAR
CONTACT THE CITY ON QUALIFIED SUBS TO WORK ON GRID

REV:	DATE:	.
6	.	.
5	.	.
4	.	.
3	.	.
2	.	.
1	.	.
0	.	.

Endpoint Solutions

6871 S. LOVERS LANE
FRANKLIN, WI 53132
PHONE: (414) 427-1200

THE BOYS AND GIRLS CLUB OF WISCONSIN
DEMOLITION PLAN
NORTH
SHERMAN PARK, 3000 N. SHERMAN BLVD
MILWAUKEE WISCONSIN 53210

DRAWN BY: NWD/JAH	DATE: 09/30/2024
CHECKED BY: NWD	
APPROVED BY: JAH	

PROJECT NO.
525-028-002

SHEET NO.

C3

Sep 30, 2024 12:59pm PLOTTED BY: jneinonen SAVED BY: jneinonen
 P:\VUS - 525\028 - Sherman Park-Boys and Girls Club\CAD\028--002 Civil Design\Shit C3_525--028--002 Demolition Plan - North.dwg Layout1
 IMAGES: T:\Template Forms\CAD\Logos\Endpoint\Endpoint Solutions H--Res.jpg;
 REFERENCES: P:\VUS - 525\028 - Sherman Park-Boys and Girls Club\CAD\028--002 Civil Design\Survey Basecamp--VUS Sherman Park.dwg; P:\VUS - 525\028 - Sherman Park-Boys and Girls Club\CAD\028--002 Civil Design\22x34 Border Sherman Park.dwg

