

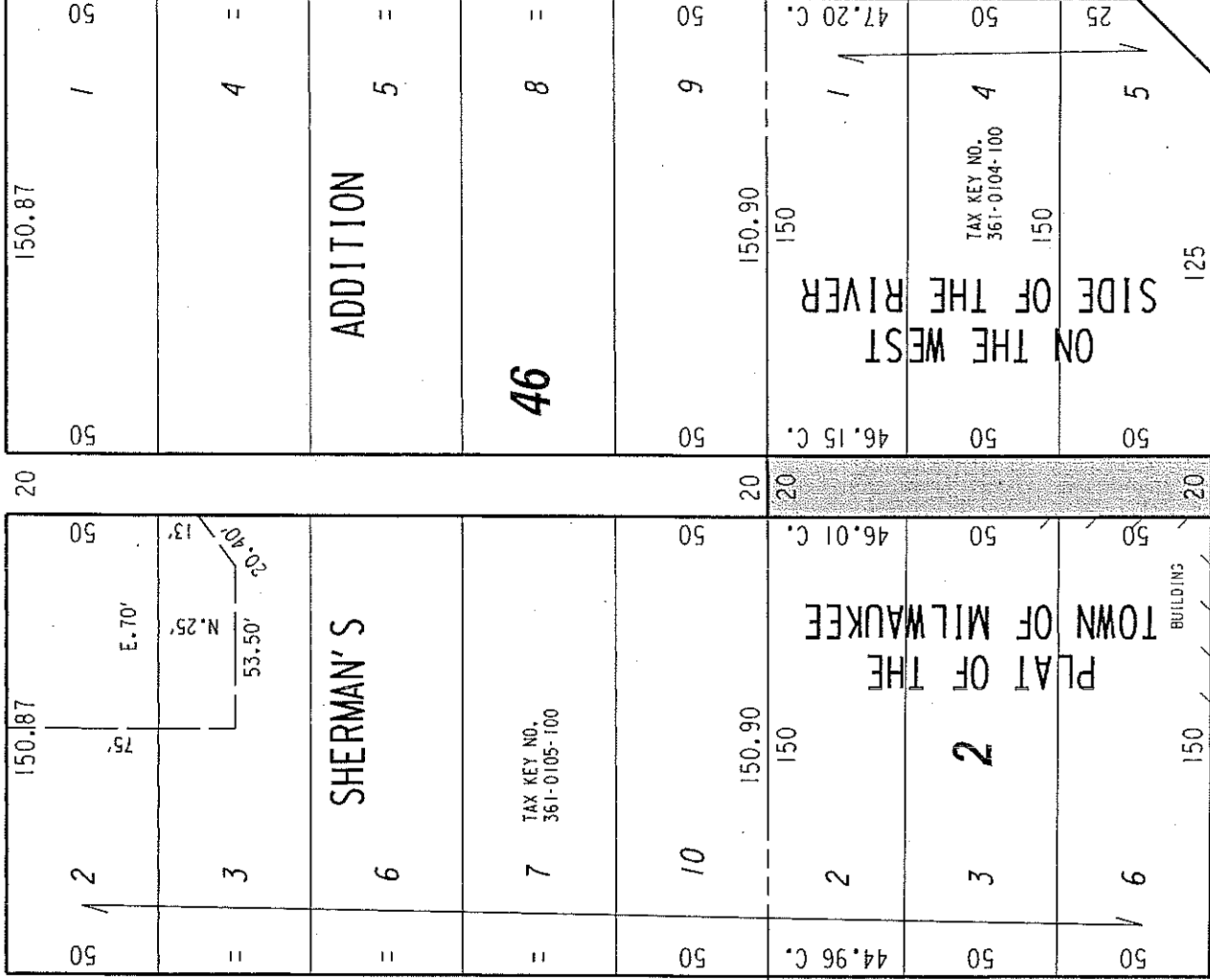
N.E. 1/4 SEC. 20, T.7N., R.22E.

353

E. Vine St.

(80' R.O.W.)

St.



N. 1st St.

(80' R.O.W.)

1/4 SEC. LINE

N. Palmer St.

(80' R.O.W.)

E. Pleasant St.

(80' R.O.W.)

St.

S.E. 1/4 SEC. 20, T.7N., R.22E.

361

PORTION OF PUBLIC
ALLEY PROPOSED
TO BE VACATED



EXHIBIT "A"

FILE NO. 141507

REVISED: MAY 15, 2015
LIMITS REVISED

INFRASTRUCTURE SERVICES DIVISION

MILWAUKEE, WISCONSIN

ASSIGNED TO: W. FUCHS

CH'K'D. BY: W. FUCHS

DRAWN BY: W.F.

DATE: JULY 1, 2015

PROJECT/GRANT NO.: WK52337366

SCALE: 1" = 60'

APPROVED BY:

Marcia Cornnell

CENTRAL DRAFTING & RECORDS MANAGER

for CITY ENGINEER