







Musical Mondays
Concerts in Lake Park

2011 Summer Series

6:30 to 8:00 p.m.

- July 4** **CHRIS SPHEERIS - COMPOSER/PERFORMER**
Welcome back this widely recorded Wauwatosa native with his guitar, intimate songs and disarmingly candid commentary.
- July 11** **THE MILWAUKEE GUITAR DUO**
Ignacio Barcia and Edel Munoz dazzle with their award-winning elegant style, blazing technique and classical-to-folk music repertoire from around the globe.
- July 18** **HOWARD LEVY - HARMONICA/PIANO/COMPOSER**
This widely-heralded Grammy-award winner and recording artist will blow you away with his inventive musicianship, virtuosity and revolutionary technique.
- July 25** **GAUDETE BRASS QUINTET**
One of today's premiere classical chamber ensembles returns to our stage with an evening of great quintet literature performed with grace, elegance and elan.
- Aug 1** **CLAUDIA HOMMEL - CHANTEUSE**
Let this charming interpreter introduce you to "The Women of Paris" with her accordionist Pat Speath and bassist Jim Cox for a romantic evening in the park.
- Aug 8** **BETTI XIANG - ERHU MASTER**
This Shanghai native, recitalist, soloist, teacher, recording artist and virtuoso Silk Road Project performer elicits awe and astonishment with her two-stringed Chinese instrument.
- Aug 15** **RANDY SABIEN & BILL CAMPLIN**
Hayward's own funky fiddler returns with his bluesy bow and swingin' style along with Ft. Atkinson's singer/songwriter, long an integral part of Milwaukee's acoustic folk scene.
- Aug 22** **THE NEW RAMPART STREET PARADERS
- DIXIELAND BAND**
Vocalist Lisa Edgar joins Milwaukee's own river city six -- Joe Aaron, Jim Christiaansen, John Knurr, Vince Picciolo, Andy Schumm and Bruce Yeo -- to end our 14th summer!



L A K E
P A R K
F R I E N D S

(414) 962-1680
www.lakeparkfriends.org



Wonderful Wednesdays

Concerts for Kids & Families in Lake Park

6:30 to 7:30 p.m.

July **6** **MACARONI SOUP**

"Macaroni Soup" with Miss Carole and Alvin McGovern – participatory music that gets everyone wiggling and giggling, hopping and stomping and singing along!

July **13** **BILL & BEN**

This will be a very special performance by master guitarists, Bill Coulter and Ben Verdery. They play along family lines, musical lines, a myriad of ancestries and influences are woven into their sound. Music for the whole family!

July **20** **PINT SIZE POLKAS**

Join Mike Schneider and his lumberjack sidekick for the happiest music in town.

July **27** **THE CHICKADEES**

It's a PAJAMA PARTY with the Chickadees – wear your favorite pjs, but make sure they're good for dancing!

Concerts take place in Picnic Area **3**

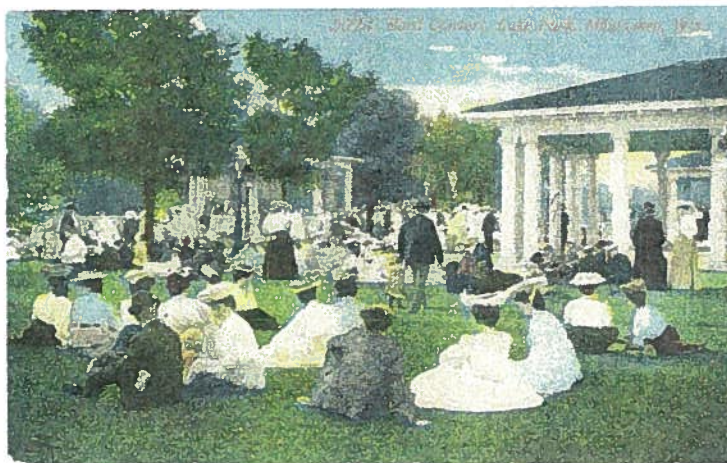
In case of rain, the concert will be held in the Community Room of the Pavilion



Concerts presented by Lake Park Friends in cooperation with Milwaukee County Parks, with a generous donation from the Coles Family Foundation



LAKE
PARK
FRIENDS



Lake Park Friends - Performance Structure

Lake Park is situated on the bluffs of Lake Michigan, in Milwaukee, and extends over one mile long, encompassing 140 acres of natural ravines, woods, meadows, historic buildings and bridges, playing fields and walking paths.

Lake Park Friends has been sponsoring Musical Mondays Concerts for 14 years. This very popular series draws an average of over 400 people to each of the eight concerts held every summer. Wonderful Wednesdays Concerts draw young children and families to four concerts every summer.

These popular outdoor concerts have been staged on an unattractive plywood stage that has become very worn and shabby. Concert goers and musicians are excited by the prospect of a new performance venue in the park. It will be a protection for the musicians and their instruments during light rain.

As importantly, it will be an attractive structure to welcome all to our concerts and events. It is our hope that other groups will make use of the stage to host other events such as dance or theatre. This shelter will greatly enhance the ability to provide cultural events in Lake Park.

The early Milwaukee Park Commissioners recognized the value of musical performance in the park. There were two bandstands in the park that provided settings for concerts. These bandstands were both removed over 50 years ago leaving the park with no performance space. A wonderful amenity long lost to the park will be restored with this building.