



# Certificate of Appropriateness

Milwaukee Historic Preservation Commission/200 E. Wells Street/Milwaukee, WI 53202/phone 414-286-5712/fax 414-286-3004

**Property** 3131 E. NEWBERRY BL. North Point North Historic District  
**Description of work** Construct a porch at the Lawn Bowling Clubhouse in Lake Park in the North Point North Historic District.  
**Date issued** 6/10/2022 PTS ID 114974 COA: add porch to lawn bowling clubhouse

In accordance with the provisions of Section 320-21 (11) and (12) of the Milwaukee Code of Ordinances, the Milwaukee Historic Preservation Commission has issued a certificate of appropriateness for the work listed above. The work was found to be consistent with preservation guidelines. The following conditions apply to this certificate of appropriateness:

The porch will be constructed as shown in the attached drawings. Roofing will match existing.

Column capitals are not to copy the capitals of the pavilion.

Columns can be made of wood, compo or metal but not fiberglass.

All work must be done in a craftsman-like manner, and must be completed within one year of the date this certificate was issued. Staff must approve any changes or additions to this certificate before work begins. Work that is not completed in accordance with this certificate may be subject to correction orders or citations. If you require technical assistance, please contact Historic Preservation staff Phone: (414) 286-5712 or (414) 286-5722 e-mail: [hpc@milwaukee.gov](mailto:hpc@milwaukee.gov)

If permits are required, you are responsible for obtaining them from the Milwaukee Development Center. If you have questions about permit requirements, please consult the Development Center's web site, [www.milwaukee.gov/build](http://www.milwaukee.gov/build), or call (414) 286-8210.

*Calvin Hotal*

---

City of Milwaukee Historic Preservation Staff

Copies to: Development Center, Contractor



View of the existing awning from the east

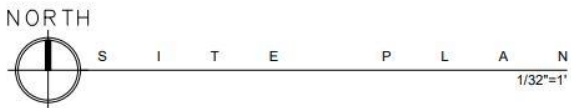
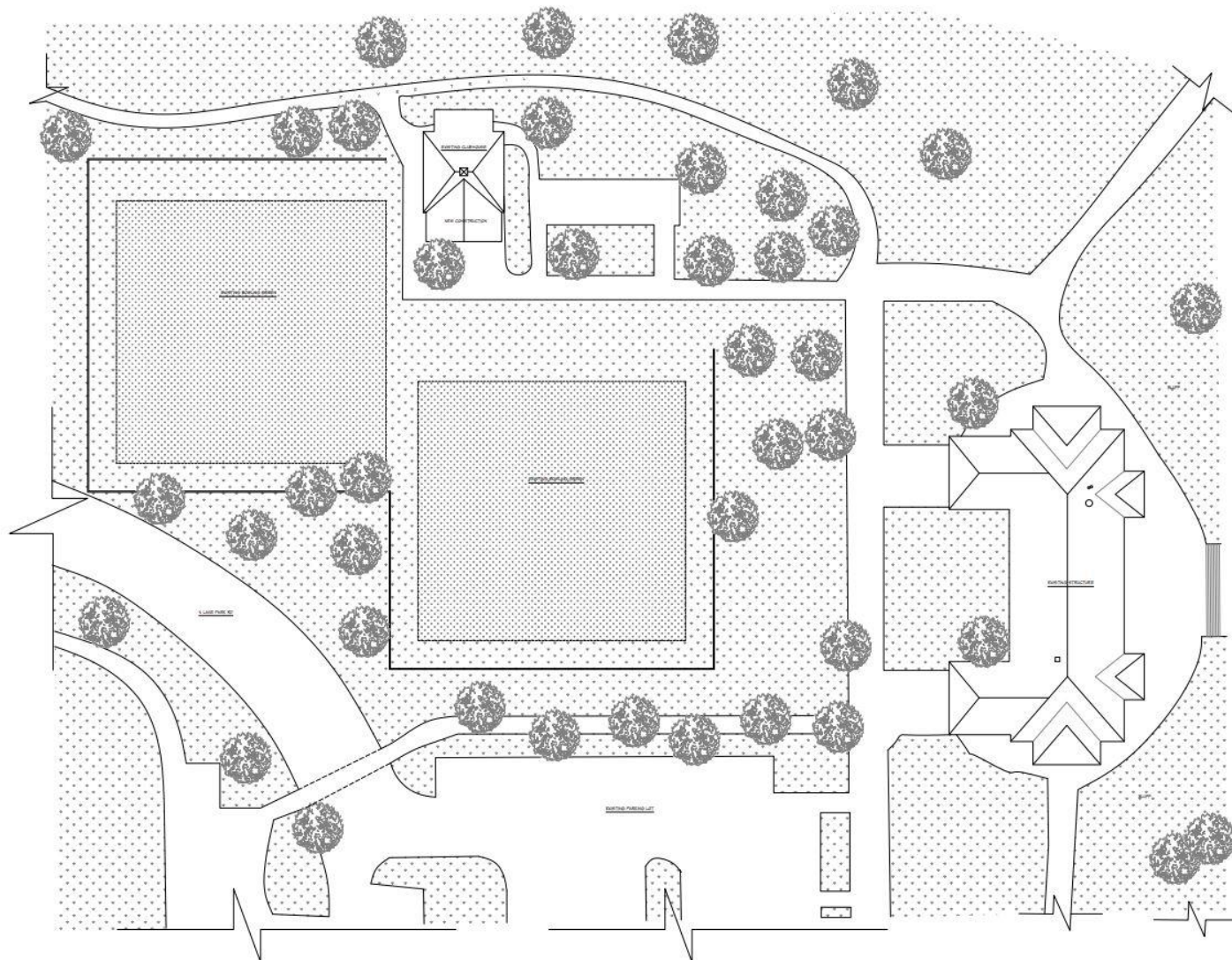


View of the existing awning from the front



View of the existing awning from the west  
You can also see the overhang of the main pavilion we are emulating in the background.

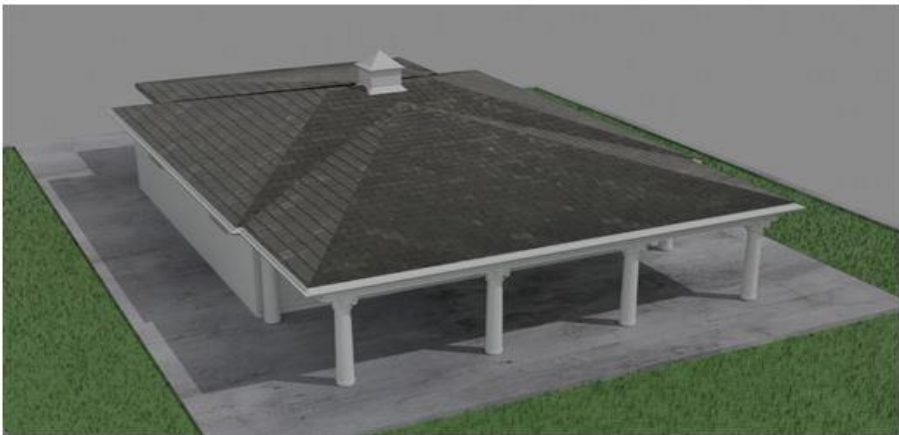
## Existing Condition

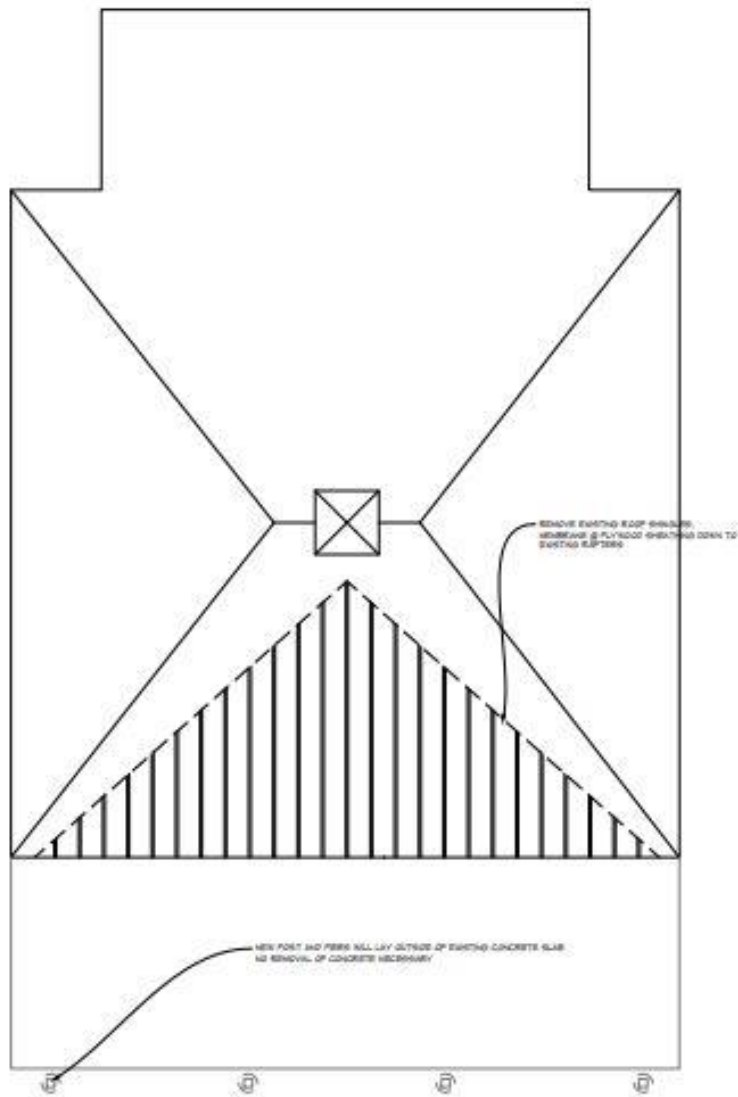


LAKE PARK LAWN BOWLING SITE PLAN		
SCALE: 1/32" = 1'	APPROVED BY:	DRAWN BY: J.R.L.
DATE: 5-8-2022		REVISED:
D E T A I L S		
<small>DRAWING NUMBER</small>		

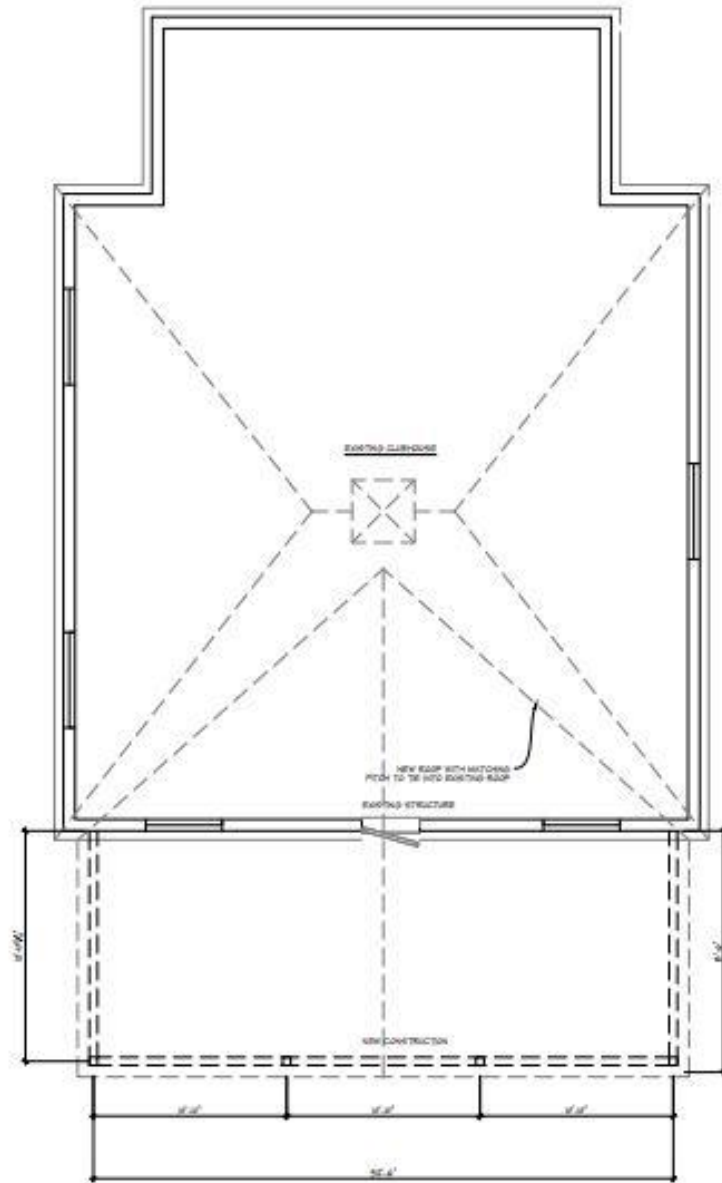


Proposed Porch

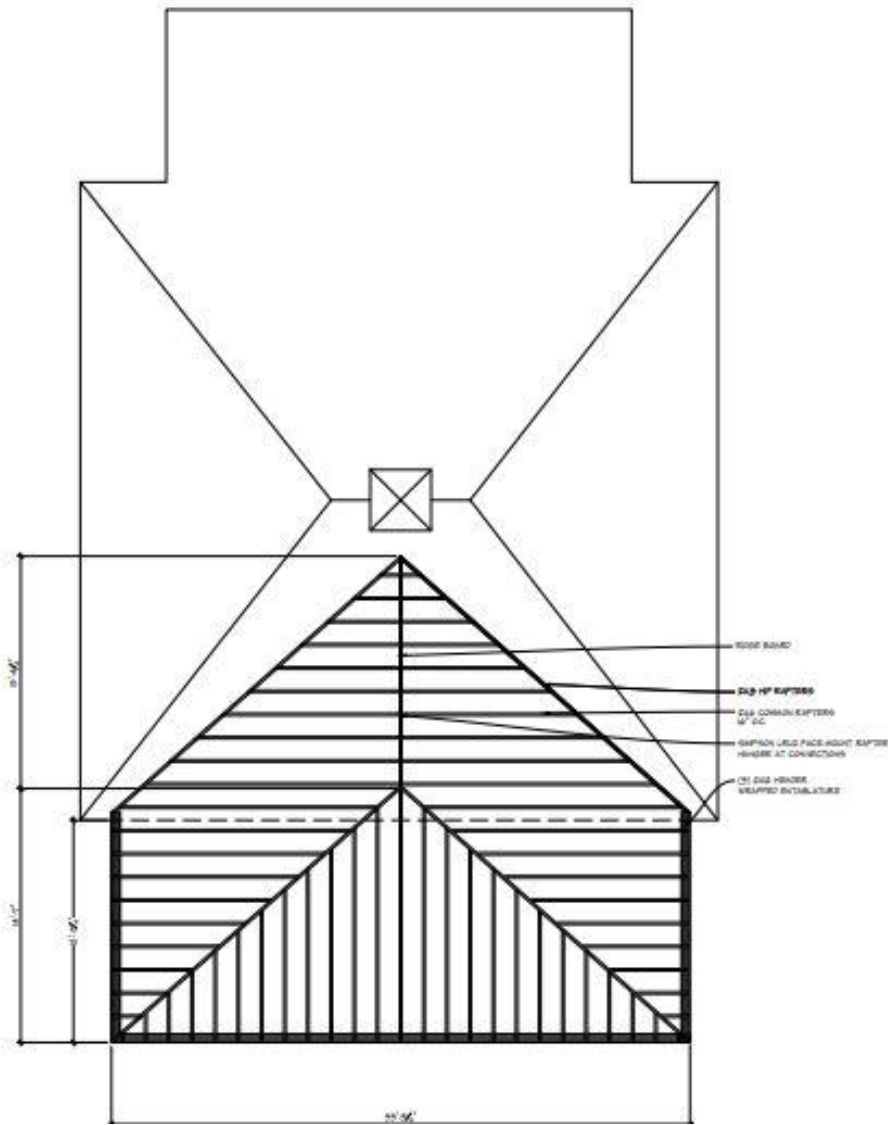




LAKE PARK LAWN BOWLING PLAN		
SCALE 1/4" = 1'	DATE 3-13-2022	DESIGNER J.R.L.
D E M O P L A N		
		REVISION A-1

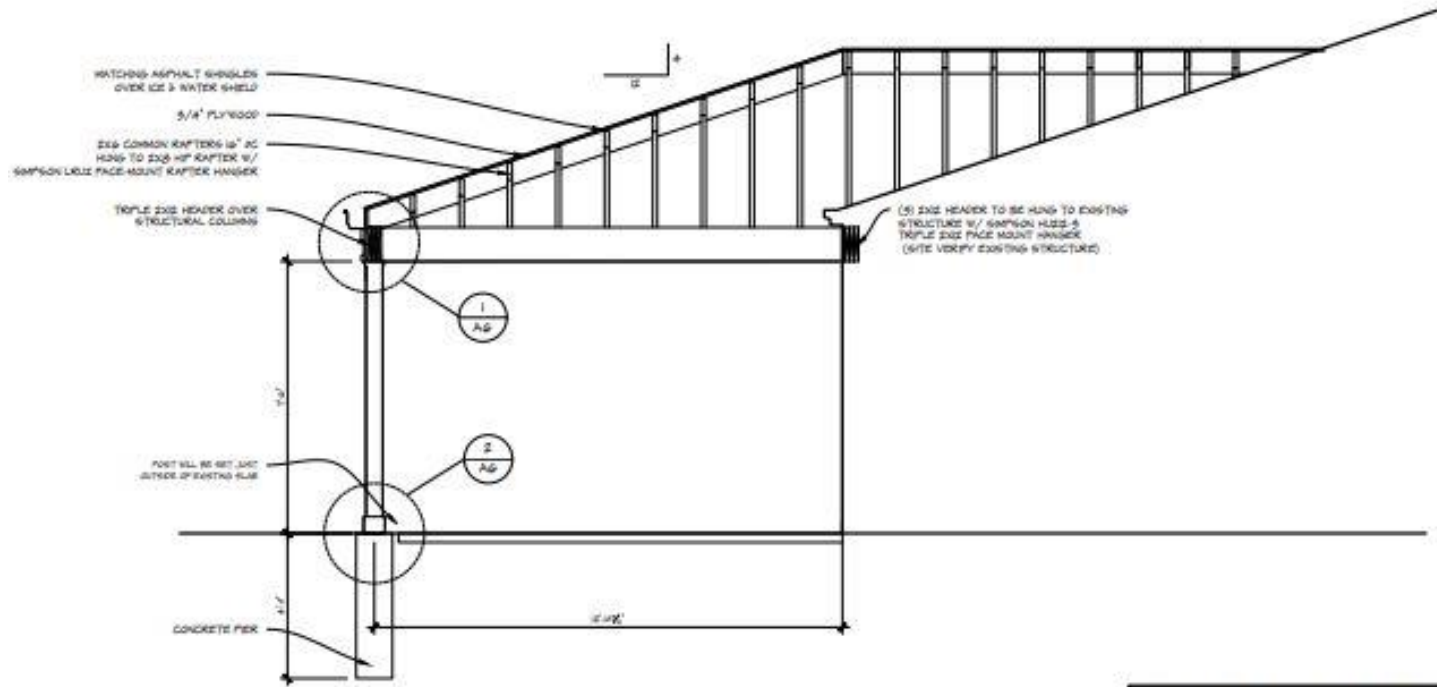


LAKE PARK LAWN BOWLING PLAN		
SCALE 1/4" = 1'	DATE 3-13-2022	DESIGNER J.R.L.
C O L U M N P L A N		NO. / SHEET A-2

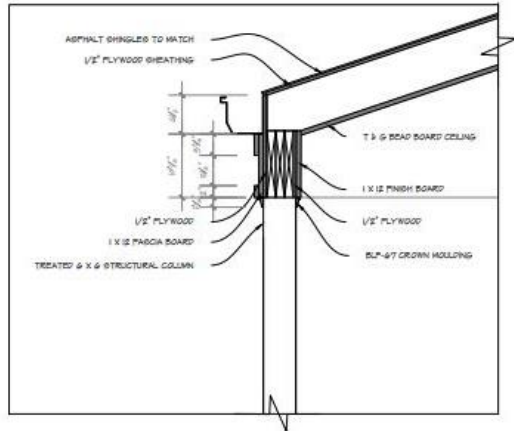


LAKE PARK LAWN BOWLING PLAN		
SCALE: 1/4" = 1'	DATE: 3-13-2022	DESIGNER: JRL
R O O F F R A M I N G		
		A-3

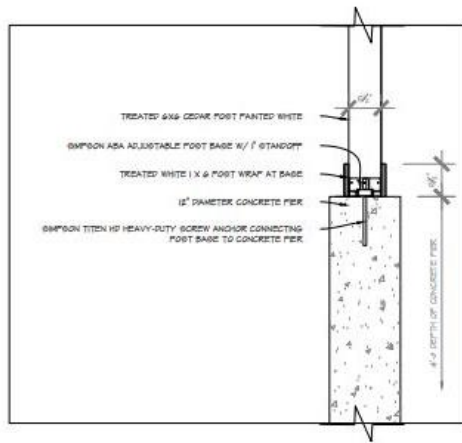




LAKE PARK LAWN BOWLING ENTRY ELEVATION		
1/4" = 1'		J.R.L.
3-13-2022		
E A S T S E C T I O N		
		A-4

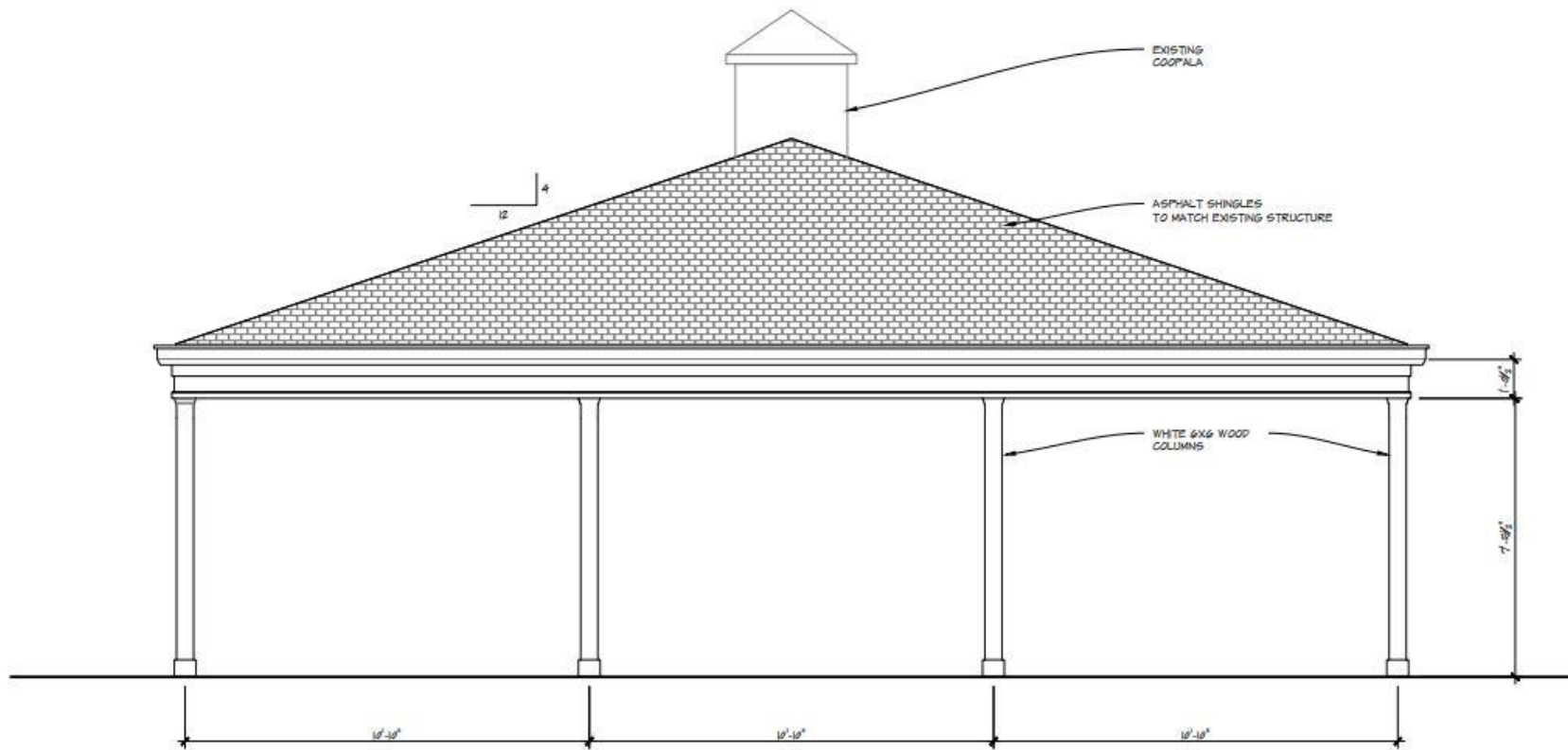


1 GUTTER / FASCIA DETAIL  
A-6 1/4"=1'



2 POST FOOTING DETAIL  
A-6 1/4"=1'

LAKE PARK LAWN BOWLING ENTRY ELEVATION		
SCALE: 1" = 1'	APPROVED BY:	DRAWN BY: J.R.L.
DATE: 3-13-2022		REVISION:
D E T A I L S		
		ISSUING NUMBER: A-6



LAKE PARK LAWN BOWLING ENTRY ELEVATION		
SCALE: 1/2" = 1'	APPROVED BY:	DRAWN BY: J.R.L.
DATE: 3-13-2022		REVISED:
N O R T H   E L E V A T I O N		
		DRAWING NUMBER: A-5



Get scrolls with a flat face. This is called an Ionic capital.



Don't get scrolls that project out at an angle like this. This is the Scamozzi subcategory of Ionic.



Plain with no scrolls is also good. This is called a Doric capital. Sometimes if it's already built into the column, the column is called "Tuscan."

Places to order columns and column parts:

<https://shop.columns.com/plan-shape-s-2.aspx>

<https://decoratorssupply.com/>

<https://www.pagliacco.com/columns.html>

A homeowner in Concordia was able to order wood columns through Bliffert last year. They don't have their catalogs online, so you'll have to call them or drop by.

<https://www.bliffertlumber.com/locations/milwaukee-chambers-st/>

Once you find something fitting the criteria and that works at your price point, send me a picture for a final check before ordering.