

CENTRO CRISTIANO MARANATA INC.

1411 W. Mineral St.
Milwaukee, WI 53204
(414) 383-5802

September 24, 2003

**CITY OF MILWAUKEE
OFFICE OF CITY ATTORNEY
800 CITY HALL
200 E. WELLS ST.
MILWAUKEE, WI 53202**

RE: C.I. FILE NO: 03-S-255

DEAR SIRs:

I AM IN RECEIPT OF A LETTER DATED JUNE 30, 2003, WHICH I DID NOT RECEIVE UNTIL SEPTEMBER 23, 2003. I AM MAKING AN OFFICIAL REQUEST FOR AN APPEAL OF THE DISSECTION TAKEN IN THIS CASE.

CORDIALLY

Rev. Frank Villa Jr.

REV. FRANK VILLA JR.

F A X

Travel Connection

To: CITY OF MILWUAKEE

Fax number: 1 414 2868550

From: Luz E Villa

Fax number: (414) 383-5802

Business phone:

Home phone: (SAME)

Date & Time: 9/24/2003 10:47:28 AM

Pages: 2

Re: APPEAL

REV. FRANK VILLA JR.

1411 W. MINERAL ST.
Milwaukee, WI 53204
(414) 383-5802

CITY OF MILWAUKEE
2003 JUN -5 PM 2: 15
RONALD D. LEONHARDT
CITY CLERK

June 2, 2003

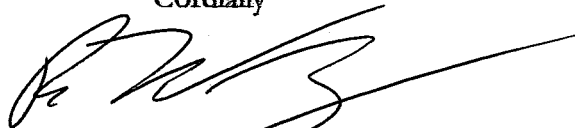
City of Milwaukee, City Clerk
Attn: Claims
200 E. Wells St., Room 205
Milwaukee, WI 53202-3567

Dear Sirs:

On April 23, 2003 the City of Milwaukee entered my property and removed personal property belonging to me. The property was a blue Brahma fiberglass camper shell, a ladder rack and a tool chest. (Photos of these items are available at the office of neighborhood service on south 6th St. in Milwaukee also attached hereto.) The items are depicted on attached photo marked "C". As you can see by the pictures they did not constitute a health hazard or a danger to the public at large. They were on my property and were a valuable asset to me. Enclosed is an estimate of the cost to replace these items. The amount is \$900.00 for the camper shell. \$390.00 for the ladder rack and \$60.00 for the tool chest. A total of \$1,350.00. This does not include the amount to paint the camper shell to match my truck nor my time to get everything done. The items referred to were used and I will stipulate to a 30% depreciation. The total amount sought would be \$945.00. I am very upset for the way the City (Inspectors) acted. They used no discretion what so ever. A reasonable person could have seen that the items were not rubbish and were not causing any harm or hazard. On top of this they send me a bill for \$684.00 to have the yard cleaned. I know that I have to take this issue up with yet another department but the litter on photo marked "C" was put there by the people that cleaned the lot adjacent to mine the is owned by the City.

I realize that as humans we have to make decisions every day and sometimes we make the wrong ones. I believe that the inspector acted rashly and should have tried to reach me personally instead of placing a notice on a property were no one is living. I do not believe that a 24-hour notice was warranted. I was out of town until May 1 and could not respond in the time allotted.

Cordially



Rev. Frank Villa Jr.

Cc. Alderman Sanchez

CITY OF MILWAUKEE
RECEIVED
'03 JUN -5 PM 3: 26
OFFICE OF
CITY ATTORNEY

**CITY OF MILWAUKEE
DEPARTMENT OF NEIGHBORHOOD SERVICES**

Nuisance Section
4001 S. 6th St.
Milwaukee, WI 53221
April 30 , 2003

RUBEN VILLA
1411 W MINERAL ST
MILWAUKEE, WI 53204

Premise Address: **617-617 S 6TH ST**
Taxkey #: 427-0508-000

Order #: 4037801

You were notified by the Department of Neighborhood Services to correct a **garbage and litter nuisance** code violation at 617-617 S 6TH ST. You failed to do so within the time prescribed in the order so the City corrected the violation.

The cost to correct the nuisance was \$684.00. As indicated in the original order, this charge if unpaid will be placed on the property tax bill. If you wish to pay this amount rather than to have it appear on your tax bill, you may do so before September 15, 2003 at this address:

Department of Neighborhood Services
Attn: Cashier
841 N. Broadway, Room 105
Milwaukee, WI 53202

Checks should be made payable to the **City of Milwaukee** for the amount listed above. Please enclose a copy of this notice with your payment.

If you wish to formally appeal this charge you must file that appeal within 30 days of the date of this letter. It must be filed with the: Administrative Review and Appeals Board, Office of the City Clerk, Room 205 City Hall, 200 E Wells Street, Milwaukee Wisconsin 53202, 414-286-2221.

If you disagree with the amount of the charge, and would like to discuss it or obtain a no cost review by a supervisor, please call 414-286-5771.

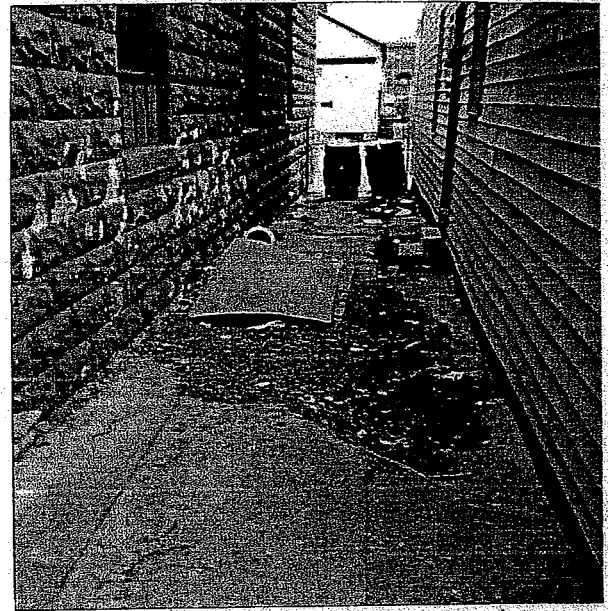
Recipients:
RUBEN VILLA, 1411 W MINERAL ST, MILWAUKEE, WI 53204

"A"



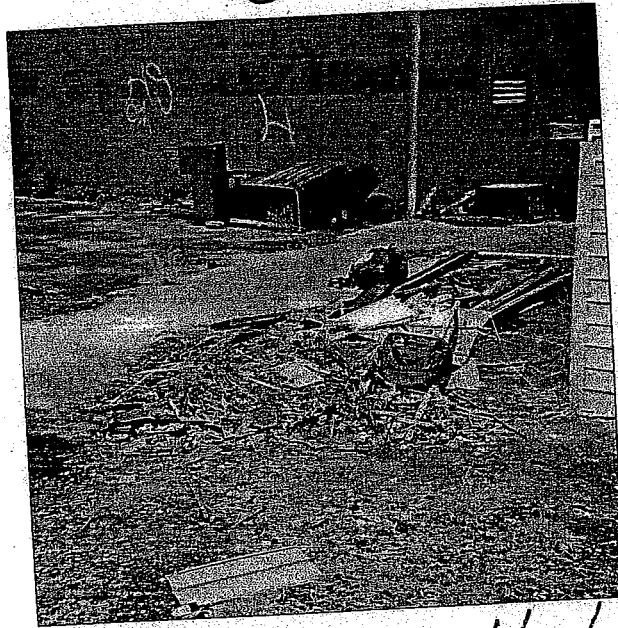
617 So. 6th St. 4/17/03
NORTH SIDE OF HOUSE. D.F.

"B"



617 So. 6th St. 4/17/03
Along No. Side of House. D.F.

"C"



617 So. 6th St. 4/17/03
REAR OF PROPERTY. D.F.



RAY'S RV SALES

PICK-UP CAPS — ACCESSORIES — SERVICE

6612 South 27th Street

(414) 761-9100

Oak Creek, WI. 53154

NAME *Frank Villa*

DATE *5-28-03*

ADDRESS

PHONE *383-5802*

CITY

MODEL *Ford Ranger*

DESCRIPTION	PRICE
<i>1- "Bouhna type cap"</i>	
<i>Repl. bracket-taller</i>	
<i>Fiberglass - special</i>	<i>900.00</i>
<i>Windows</i>	
<i>1- Steel taller front</i>	
<i>cab cover 39" plastic</i>	
SUBTOTAL	
TAX	<i>50.40</i>
TOTAL	<i>950.40</i>
DEPOSIT	
BALANCE DUE	

Checks Payable to RAY'S R-V SALES:

RECEIVED AND ACCEPTED BY

Minimum of 20% for deposit, forfeited upon default of contract by purchaser. Absolutely no guarantee on delivery dates. Some materials subject to freight and/or handling fees/nonreturnable. No guarantee on any Color Match Orders.

with these portable storage solutions

N. Catalog/Online Exclusive ProCart™ Double-Duty Utility Cart. High-density polyethylene structural foam construction. Flip hinged side gates down or flip side gates up and ProCart is a box-top cart. I-beam design makes loading and unloading oversized items on the lower shelf easy. 400-pound capacity. Tools not included.

59096 - Wt. 62 lbs. 169.99

P. Catalog/Online Exclusive ProCart™ Storage Bin System. Create a mobile work center to keep your small parts organized. 36 heavy-duty bins hang from optional nine-rail kit on ProCart. Tools not included.

59097 - Wt. 30 lbs. 109.99

Catalog/Online Exclusive Rail Kit for ProCart™ Utility Cart. Includes nine steel rails to hang bins on ProCart. Industrial grade, easy assembly.

59099 - Wt. 24 lbs. 44.99

SAVE \$25 on combo. Includes utility cart, 36 bins and rail system. Separate prices total \$324.97.

59098 - Wt. 116 lbs. 299.97

Q. SST™ Sit/Stand Tote Truck.

With 5,081 cu. in. of storage. Transports tools, sporting goods, camping equipment and more. Unique hand truck design with 5-inch wheels is easy to maneuver, even over rough surfaces. High-impact polypropylene with a standing capacity of up to 350 pounds. Telescoping handle pulls out to height of 37 inches. 10-inch bottom tub for bulk storage. 4 3/4-in. tote tray, 2H-in. divided tray. Measures 23 3/4W x 17 3/4D x 18 1/2H in.

59027 - Wt. 19.5 lbs. 49.99

R. Catalog/Online Exclusive Extra-deep Steel Toolbox. With 1,600 cu. in. of storage. Tote tray is 19 3/8W x 7 1/2D x 3 11/16H in. Measures 20W x 8 1/2D x 9 1/2H in. Tools not included.

59212 - Wt. 12.1 lbs. 32.99

S. Catalog/Online Exclusive Extra-large Steel Flat-top Toolbox. 2,169 cu. in. of storage. Includes 23 7/16W x 8 13/16D x 3 5/8H in. tote tray. Measures 24 1/4W x 9 1/2D x 9 1/2H in. Tools not included.

59241 - Wt. 20 lbs. 54.99

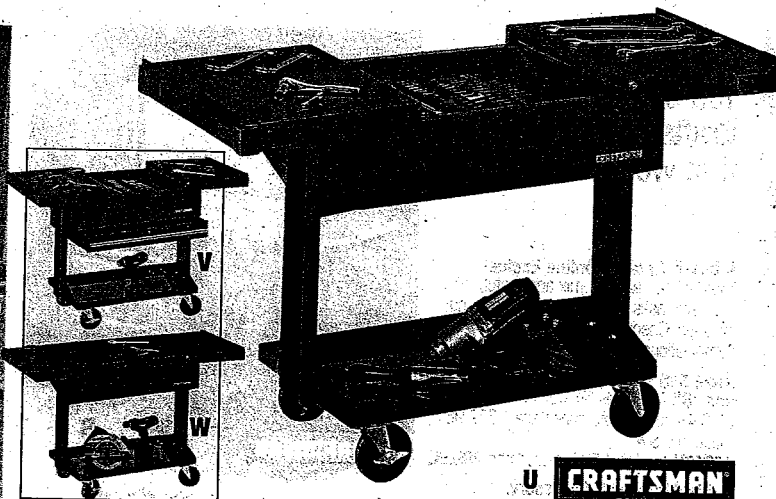
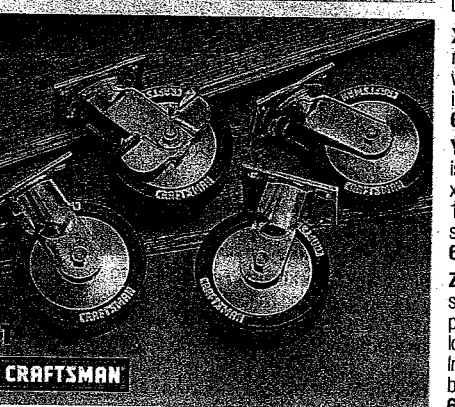
T. Catalog/Online Exclusive 6-inch diameter Caster Set.

Four-piece set features two swivel casters with toe brakes and two rigid casters. For replacement of 6 x 2-in. casters only or to upgrade Craftsman 40-inch ball-bearing mobile carts. Includes chrome-plated steel mounting hardware and instructions.

65207 - Wt. 28 lbs. 69.99

Also Available. 5-inch diameter Caster Set. Use with Craftsman roll-aways (excluding Craftsman Professional). Measures 2 inches wide.

65276 - Wt. 10 lbs. 34.99



SAVE \$50 - Rollmaster Combo™. Features over 7 square feet of worksurface. Includes "U", "V" and "W". Tools not included. Separate prices total \$379.97.

65179N♦ - Wt. 134 lbs. 329.97

U. Catalog/Online Exclusive Heavy-duty Rollmaster™ Work Station. Over 4.55 square feet of worksurface. Features extra heavy-duty steel construction with 14-gauge reinforced caster plates, uprights. Deep storage with lift-out/sliding tray and security lock. Rubber mats on worksurfaces; rubber bumpers. Four 5 x 1-in. swivel casters, two with brakes. Measures 32 1/4W x 20 3/4D x 33 3/4H in. Optional top and drawer offered below. Made in U.S.A.

65820N♦ - Wt. 104 lbs. 279.99

V. Catalog/Online Exclusive Optional drawer fits Work Station "U" for additional storage. Drawer measures 29 1/4W x 17 1/2D x 4H in. Made in U.S.A.

65627♦ - Wt. 17 lbs. 44.99

W. Catalog/Online Exclusive Optional Top. Adds 50 percent more worksurface to Work Station "U". Fits in the gap between sliding top halves on "U". Measures 19 5/8W x 20 3/4D x 2 3/4H in. Made in U.S.A.

65629 - Wt. 13 lbs. 54.99



X. 2-shelf Utility Cart. Carries loads up to 500 pounds. Interlocking snap-together design for rigidity and easy assembly. Four 4 x 2-in. casters; two rigid, two swivel with brakes. Casters attach with fasteners (included). Side handle. Measures 30 1/2W x 16 1/2D x 34 1/2H in. Tools not included. Made in U.S.A.

65345 - Wt. 32 lbs. 59.99

Y. Catalog/Online Exclusive Deluxe Utility Cart. Carries loads up to 1,000 pounds. Worksurface is constructed of heavy-duty, 14-gauge steel. Chrome-plated uprights. Drawer measures 23 7/16W x 12 3/8D x 3 7/8H in. Top and bottom trays measure 30 1/16W x 15 5/16D x 3H in. Has four 5 x 1-in. casters; two rigid, two swivel with brakes. Measures 30 1/4W x 16 1/4D x 38 1/4H in. Tools sold separately. Made in U.S.A.

65822 - Wt. 46 lbs. 149.99

Z. 3-drawer Maintenance Cart. Provides 12,829 cu. in. of storage with 3 square feet of shelf space. Ideal for storing clean-up equipment, bottles, cans and more. Two doors secure bottom portion. Right door has perforation for hanging hooks. Left door has three interior shelves. Three locking top drawers have full-width pulls for easy tool access; measure 22 3/8W x 16 1/2D x 2H in. Includes two locks with reversible overmolded keys. Four 5 x 2-in. casters; two rigid, two swivel with brakes. Measures 26 1/2W x 18D x 41 1/2H in. with casters. Tools not included. Made in U.S.A.

65327N♦ - Wt. 105.5 lbs. 329.99

STOP IN, LOG ON, CALL US. 1-800-377-7414 OR sears.com/craftsman

TOOL STORAGE 71
Mobile Storage and Tool Accessories