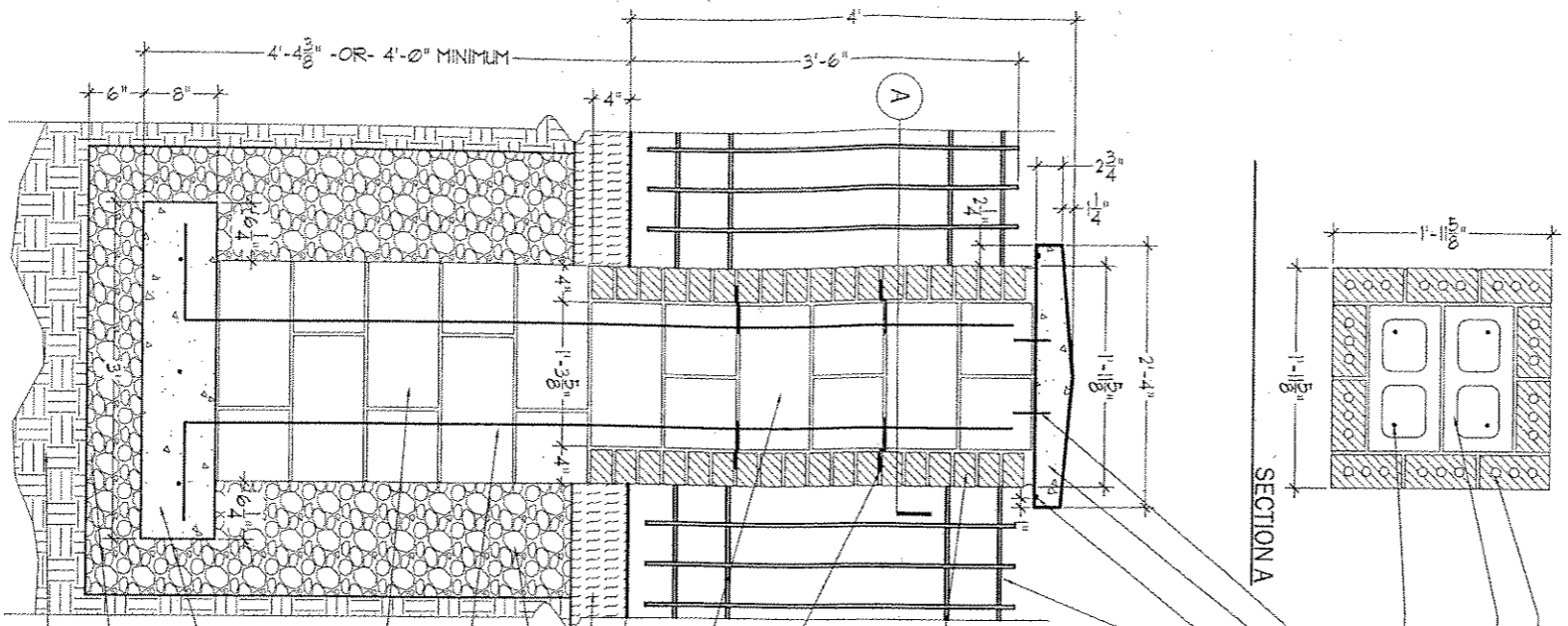


DRAFT



SECTION A

- TYPICAL CLAY BRICK
- TYPICAL CONCRETE MASONRY UNIT
GROUT FILLED CELLS
-OR- REINFORCED POURED CONCRETE
- #4 REBAR CONTINUOUS THE
FULL HEIGHT OF THE PIER
- (4) 1/2"x4" STEEL DOWELS
- PRECAST CONCRETE CAP
ON 1/2" MORTAR SETTING BED.
- 1/4"x1/4" GROOVE DRIP EDGE AROUND
ENTIRE PERIMETER OF CAP UNDERSIDE
- ORNAMENTAL GALVANIZED STEEL FENCE (SEE DETAIL)
MANUFACTURER: MONUMENTAL IRON WORKS (OR EQUAL)
STYLE: ESTATE FENCE - STYLE M (3/4" PICKETS)
COLOR: BLACK
HEIGHT: 3'-6"
FASTEN TO PIER AND INSTALL IN
ACCORDANCE TO MANUFACTURERS
WRITTEN REQUIREMENTS.
(SUBMIT SHOP DRAWINGS FOR APPROVAL)
- CLAY BRICK VENEER
PATTERN: RUNNING BOND
JOINTS: 3/8" CONCAVE TOOLED JOINTS.
NOMINAL BRICK SIZE: 4"x2-2/3"x8"
COLOR: TAN (SUBMIT SAMPLE FOR
OWNER APPROVAL)
- TYPICAL MASONRY TIE:
ALL 4 SIDES EVERY 2 COURSES OF CMU.
MINIMUM 4 MASONRY TIES PER SIDE
- CONCRETE MASONRY UNITS (CMU)
WITH GROUT FILLED CELLS.
JOINTS: 3/8" CONCAVE TOOLED JOINTS
- FINISH GRADE
- TOPSOIL
- WASHED AGGREGATE BACKFILL
- #4 RE-BAR CONTINUOUS THE
FULL HEIGHT OF THE PIER.
- CONCRETE MASONRY UNITS (CMU)
WITH FULLY GROUTED CELLS.
-OR-
POURED CONCRETE PIER WITH #4 RE-BAR
12" ON CENTER IN BOTH DIRECTIONS.
3000 PSI @ 28 DAYS
- POURED CONCRETE FOOTING WITH #4 RE-BAR
12" ON CENTER IN BOTH DIRECTIONS.
3000 PSI @ 28 DAYS
- WASHED AGGREGATE BASE
COMPACTED TO 95% MODIFIED PROCTOR
- UNDISTURBED SUBGRADE

BRICK FENCE PIER W/ MASONRY CORE

SCALE 3/4" = 1'-0"

SA-189B
WA-262

EXHIBIT B