



# Historic Preservation Commission Meeting July 15, 2014

- Good Afternoon!  
Please sign in at the door
- If you wish to speak on an issue or have your opinion noted by the commission, please fill out a form at the door and hand it to us

**PUBLIC HEARING**

**ON THE HISTORIC DESIGNATION**

**OF THE**

**JACOB NUNNEMACHER ESTATE /  
WILDENBERG HOTEL**

**3774 SOUTH 27<sup>TH</sup> STREET**

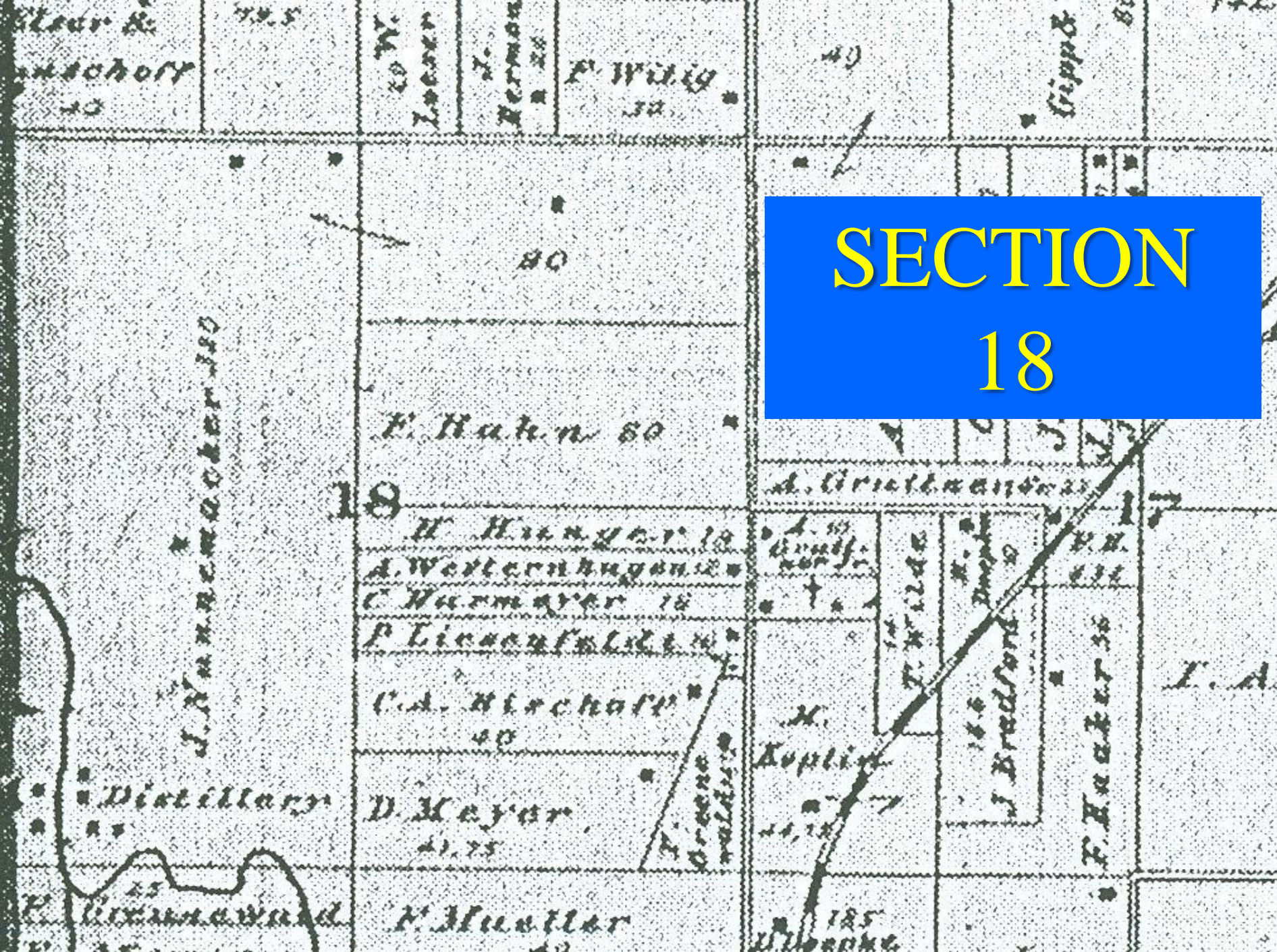




PORTRAIT  
JACOB  
NUNNEMACHER

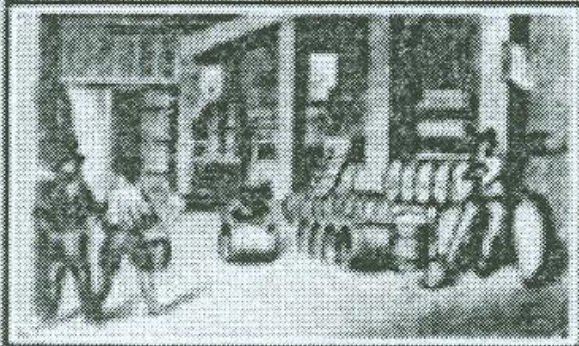
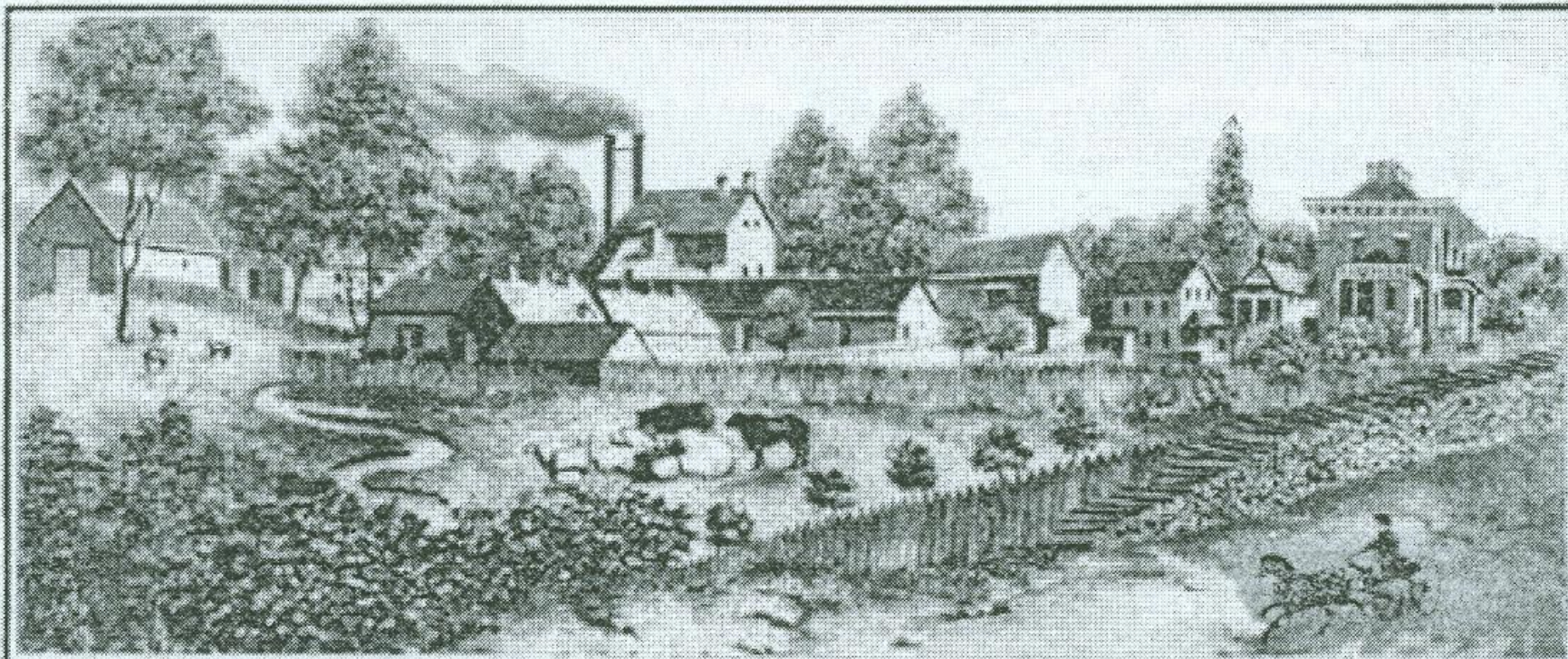


# SECTION 18

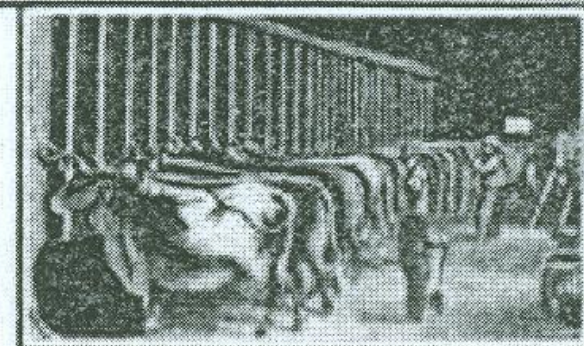




PIONEER JACOB NUNNEMACHER DISTILLERY (1842-1862)



Jacob Nunnemacher's  
DISTILLERY,  
TOWN LAKE,  
MILWAUKEE COUNTY  
Office  
Cor. E. Water & Oneida Sts.  
MILWAUKEE, WIS.



NOW THE EVERGREEN CAMP, 3774 SO. 27TH ST., MILWAUKEE 7, WIS.

Digital Image © 2004 University of Wisconsin-Milwaukee Libraries

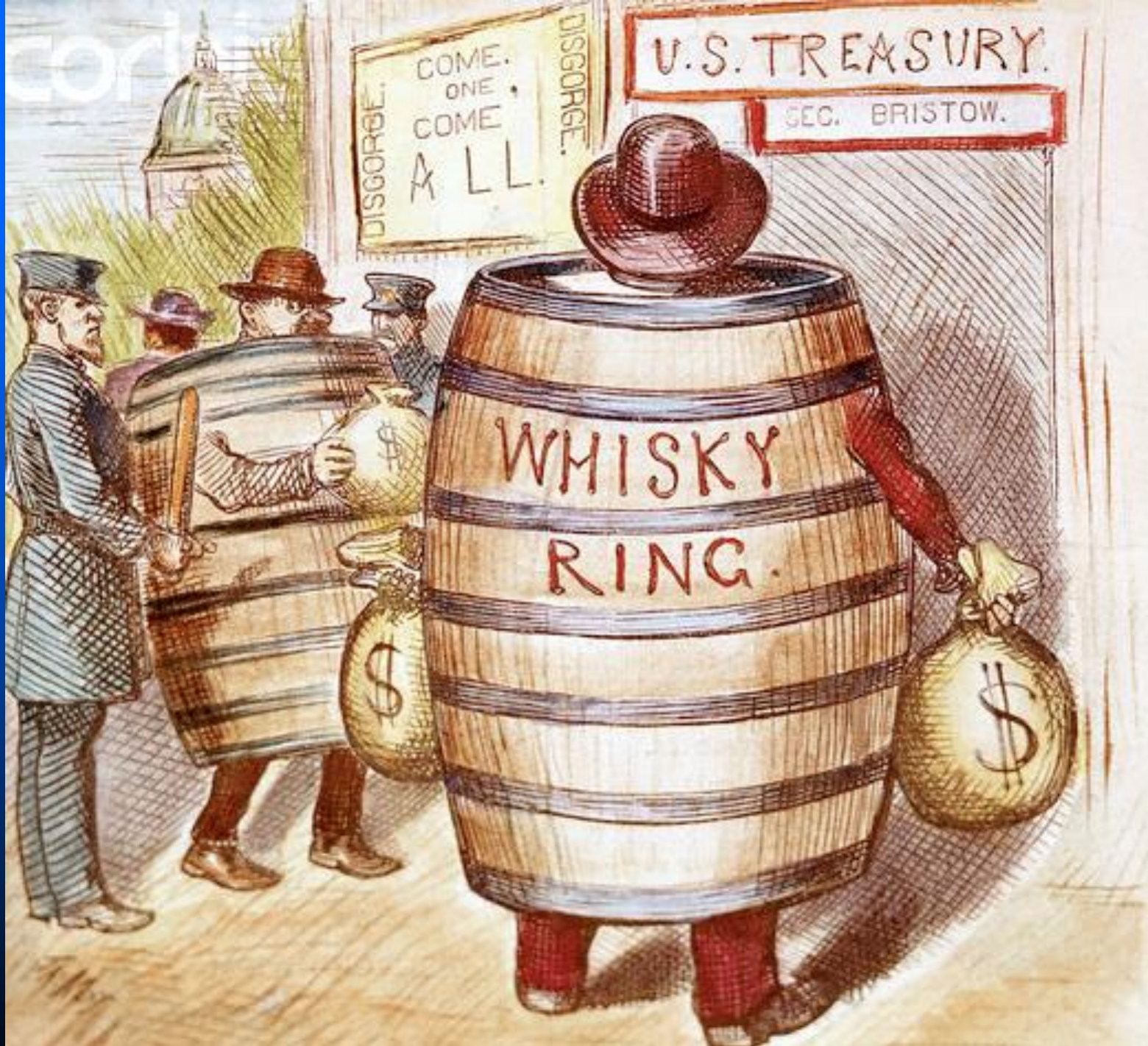
**VIEW OF GROUNDS 19<sup>TH</sup> CENTURY  
MADE INTO POSTCARD FOR EVERGREEN CAMP**





**TOWN OF LAKE HOUES WITH MEMBERS OF THE  
NUNNEMACHER FAMILY**





U.S. TREASURY.

SEC. BRISTOW.

DISGORGE.  
COME. ONE.  
COME  
ALL.

WHISKY  
RING.

\$

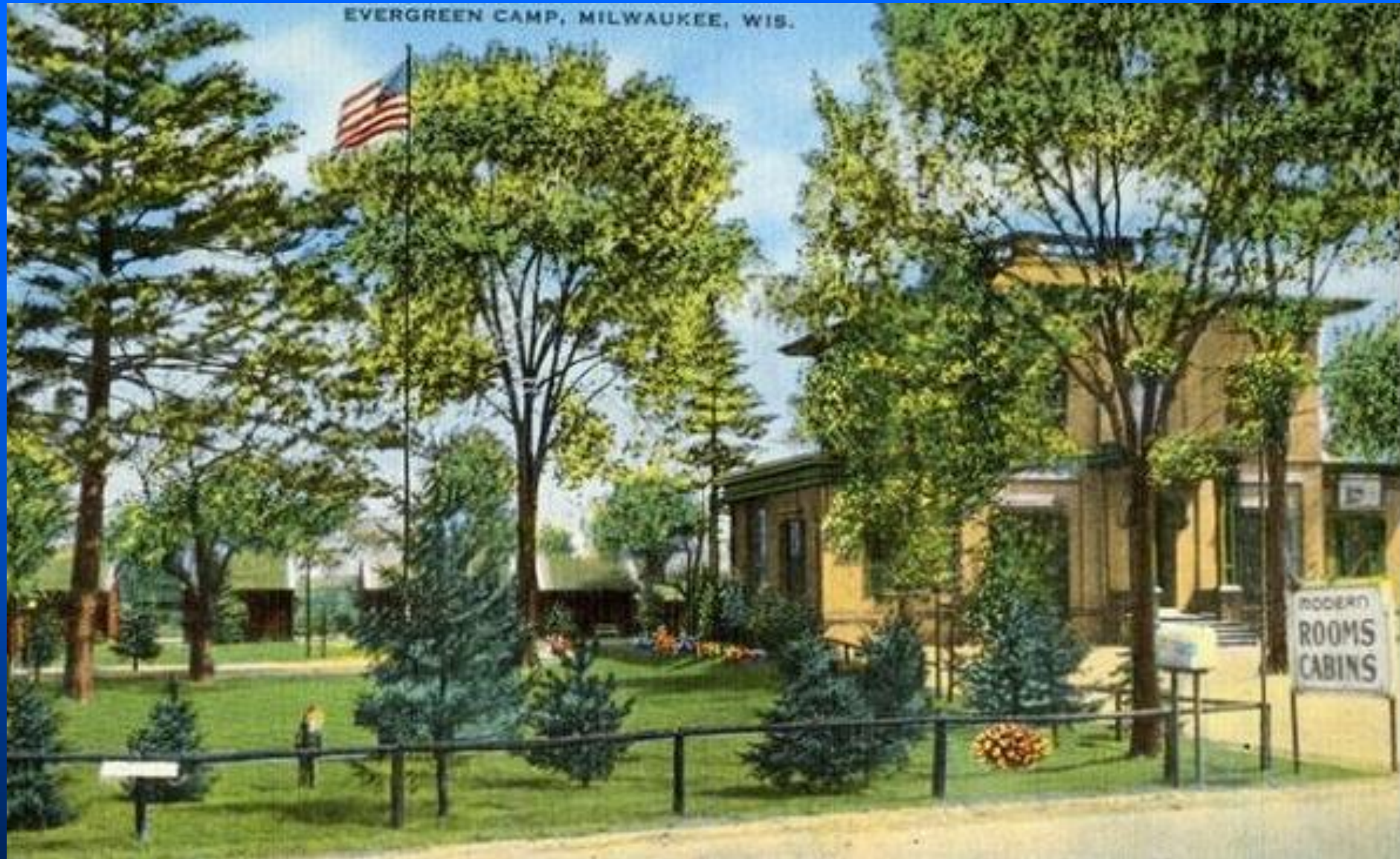
\$





DISTILLERY C. 1932

EVERGREEN CAMP, MILWAUKEE, WIS.







**DENNIS WIERZBA PHOTO  
COLLECTION UWM 1940S**



**DENNIS WIERZBA PHOTO COLLECTION UWM 1940S**



EVERGREEN CAMP, 3774 SO. 27TH ST.,  
MILWAUKEE 7, WIS.



Digital Image © 2004 University of Wisconsin-Milwaukee Libraries

## EVERGREEN CAMP WITH CABINS UWM COLLECTION



Digital Image © 2008 University of Wisconsin-Milwaukee Libraries

**LOUIS J. LEWIS AT BAR IN NORTH PARLOR**





**NUNNEMACHER ESTATE / WILDENBERG HOTEL  
TODAY**



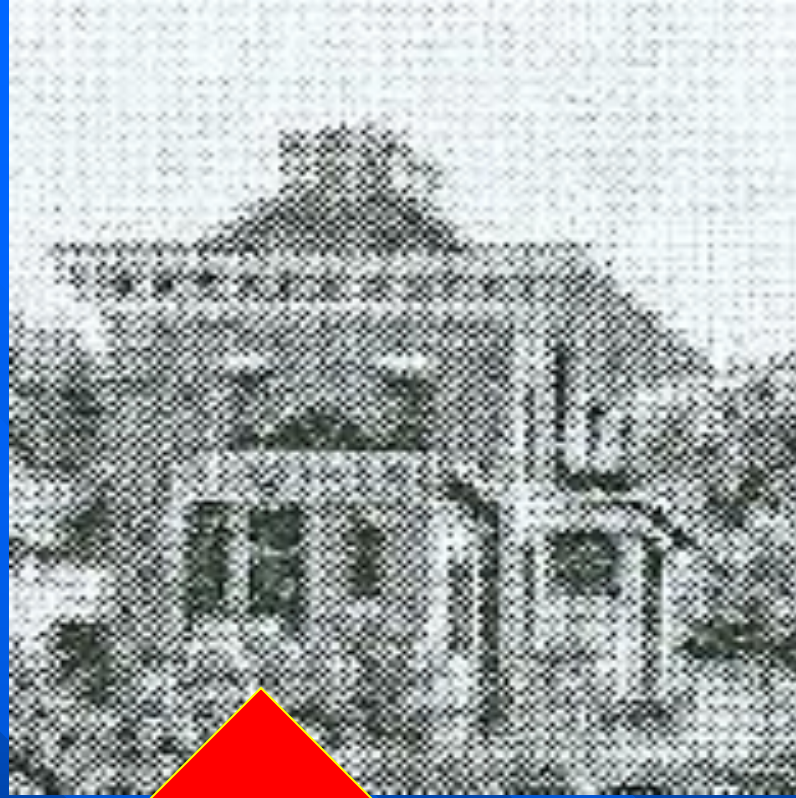












LARGE WINDOWS IN NORTH WING

















LARGE KEYSTONE  
ABOVE ENTRY

EVERGREEN











# SOUTH WING ALTERATIONS





LOOKING THROUGH  
ENTRY  
FROM MAIN HALL



NEWEL POST MAIN HALL









**FLOOR DETAIL NORTH PARLOR**





## NORTH PARLOR WINDOW



**PANELED AREA BELOW SOME OF WINDOWS NORTH WING**





**LATCH ON CASEMENT / FRENCH WINDOWS**



**NORTH PARLOR FIREPLACE**





**FIREPLACE  
SOUTH  
PARLOR**





**ORNAMENTAL PLASTER CEILING ABOVE DROPPED CEILING**









## SECOND STORY STAIR HALL





INSIDE ENTRY



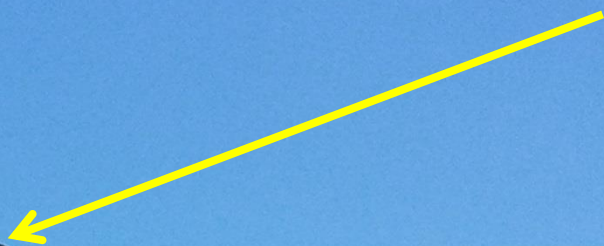




**Vinyl hopper or awning-style  
replacement windows  
608 N. Broadway  
*East Side Commercial Historic  
District***

Applicant:  
Donald Arenson













3<sup>rd</sup> floor

2<sup>nd</sup> floor



Opening made  
into 3 parts





Proposed  
replacement  
window for  
second and  
third floors

# Plaque program

The background of the slide features several thick, parallel diagonal stripes in a medium blue color, extending from the top-left towards the bottom-right.





CERTIFIED LOCAL GOVERNMENT

REVIEW OF THE

NATIONAL REGISTER NOMINATION FOR THE

SQUARE D / INDUSTRIAL CONTROLLER

(JUNIOR HOUSE LOFTS)

AT 710 SOUTH 3<sup>RD</sup> STREET





JUNIOR  
HOUSE  
LOFTS

710 SOUTH  
THIRD







CERTIFIED LOCAL GOVERNMENT REVIEW  
OF THE  
NATIONAL REGISTER NOMINATION  
FOR THE PITTSBURGH PLATE GLASS  
HISTORIC DISTRICT



**WRC**  
TECHNOLOGIES, INC.  
300 S. BARCLAY ST.

S. OREGON



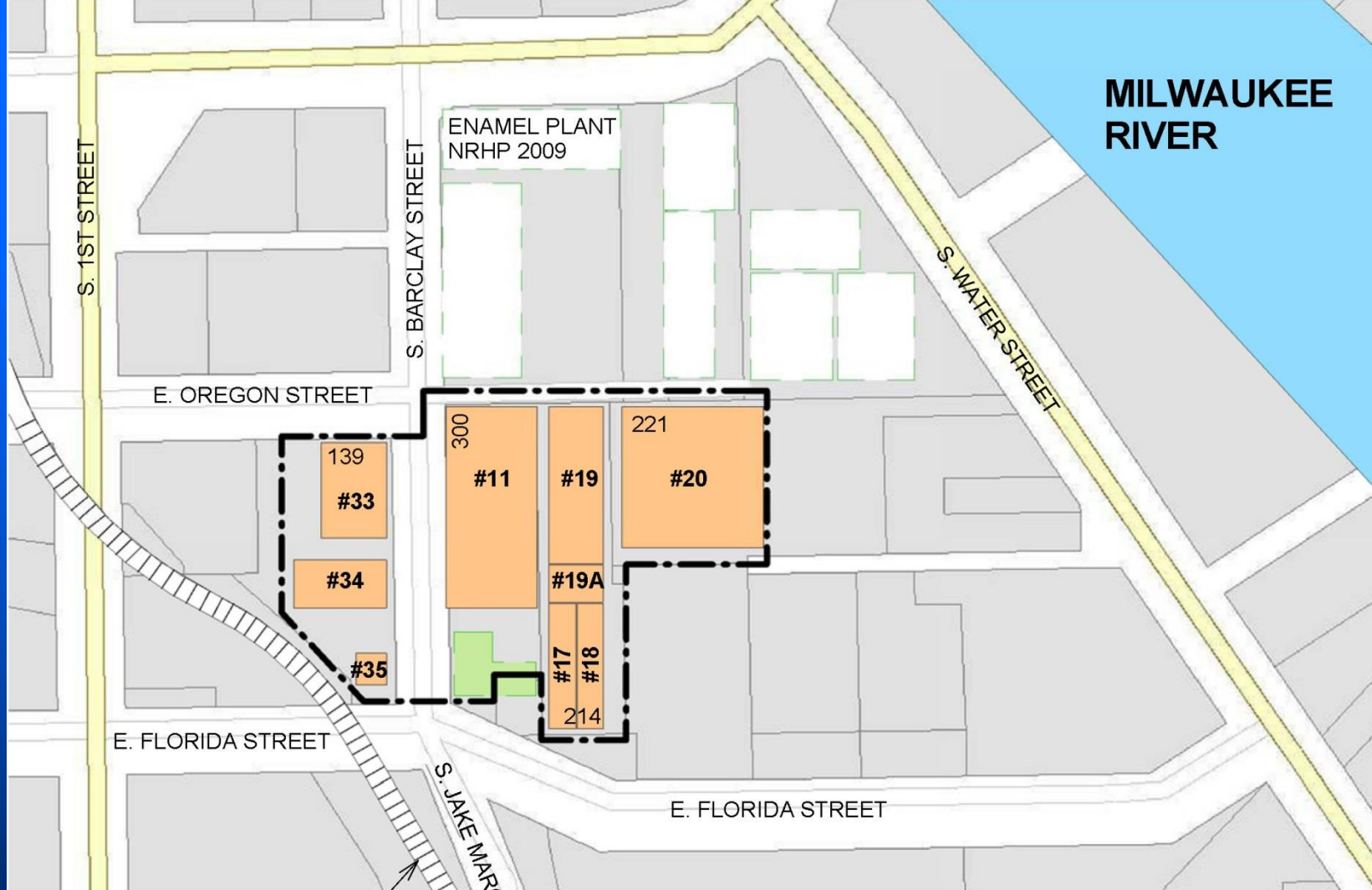




Conway

Con



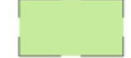





# REFERENCE MAP

SCALE: 1:200



-  PROPOSED PPGHD BOUNDARY
-  CONTRIBUTING BUILDINGS
-  DEMOLISHED BUILDINGS
-  ORIGINALLY PART OF PPG CAMPUS, NOT INCLUDED IN PROPOSED PPGHD