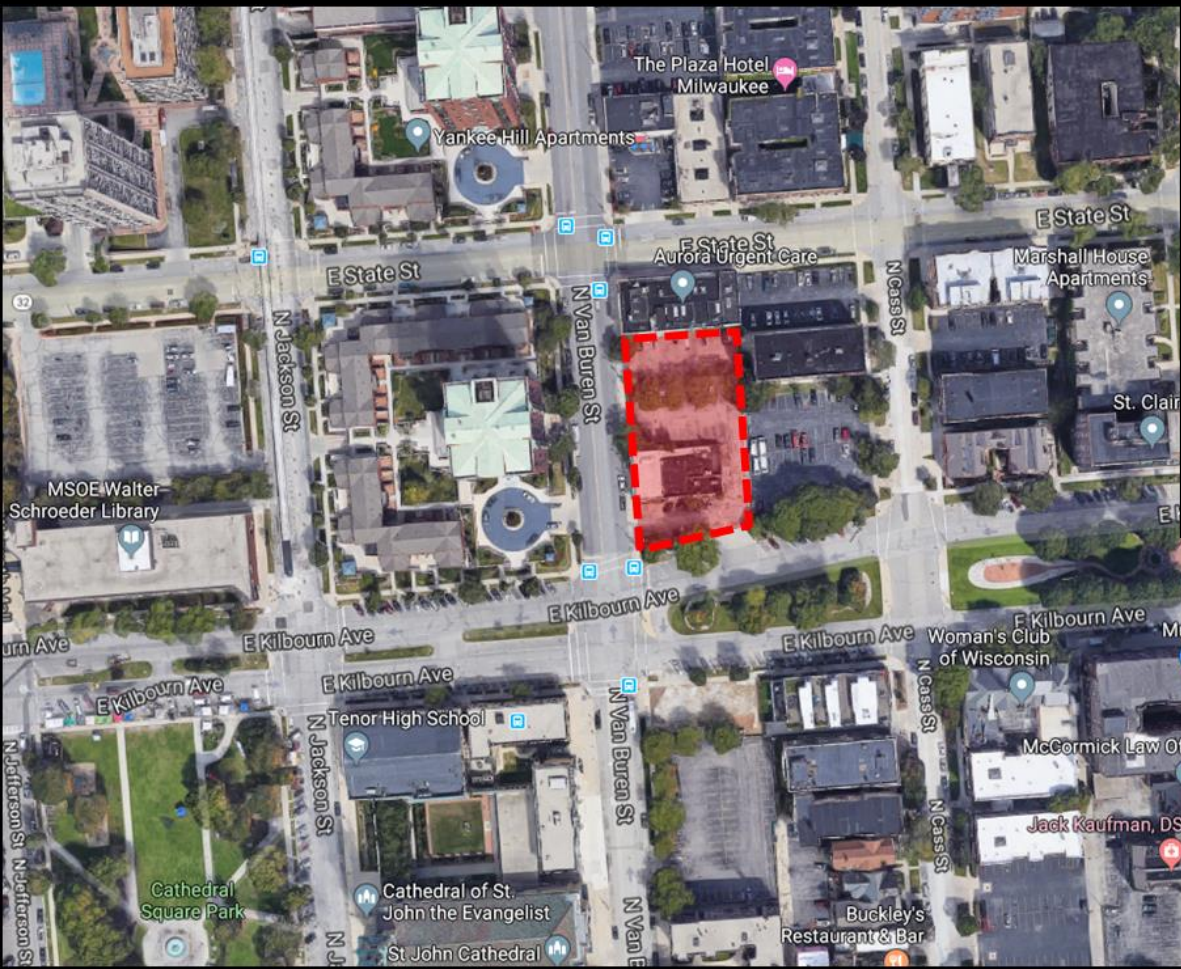


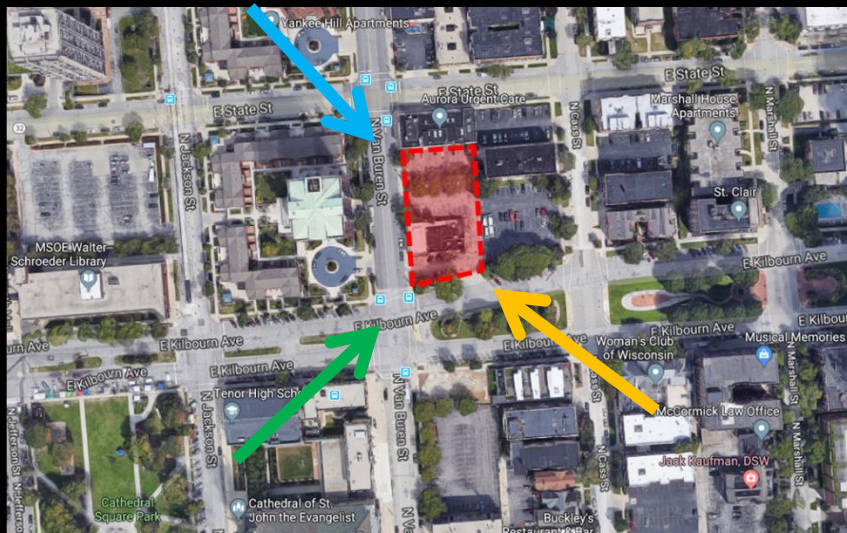
File No. 191674. A substitute ordinance relating to the Second Amendment to the Detailed Planned Development known as Ascent Apartments to allow an increase in the number of dwelling units and building stories, as well as minor changes to the design of the previously approved mixed-use building on land located at 700 East Kilbourn Avenue, on the north side of East Kilbourn Avenue, east of North Van Buren Street, in the 4th Aldermanic District.



File No. 191674. Site Context Photos.



View from East Kilbourn Avenue looking north-west



View from East Kilbourn & North Van Buren looking north-east



View from North Van Buren Street looking south-east