

NATIONAL MARKET SAMPLES

Current City Size Rank	City	1990 Rank	2000 Rank	2010 Rank	2014 Rank	Annual Rent	Equipment	Lease Parcel Area	Power Included	See Comment
2	Los Ang., CA	2	2	2	2	\$1,224	Neutral Antenna and Carrier Radios	Minimal Footprint	Y	
3	Chicago, Ill.	3	3	3	3	\$2,316	2-3 Antennas & 2 -3 Radios	Ground Equipment	N	
4	Houston, TX	4	4	4	4	\$1,500				
6	Phoenix, AZ	10	6	6	6	\$3,573	Two 5' Macro Antennas & 2' Microwave Dish	1-50 Cu Ft.	N	
7	San Ant., TX	9	9	7	7	\$1,500			N	See Comment 1
9	Dallas, Tex.	8	8	9	9	\$1,500				
10	San Jose, CA	11	11	10	10	\$3,000				See Comment 2
13	San Fran, CA	14	13	13	14	Utility	24" Antenna & 2 RRUs	Minimal Footprint	N	
26 20th MSA	Baltimore, MD	12	17	21	26	\$100	24" Antenna & 2 RRUs	Minimal Footprint	N	See Comment 3
31	Milwaukee, WI	17	19	28	31	\$1,800	24" Antenna & 2 RRUs	Minimal Footprint	N	
46	Minneapolis, MN	43	45	48	46	\$720	24" Antenna & 2 RRUs	Minimal Footprint	Y	
48	Cleveland, OH	23	33	45	48	\$500	24" Antenna & 2 RRUs	Minimal Footprint	N	

RED shaded cells above indicate declining markets.

Green shaded cells above indicate growing markets.

Comments:

Comment 1: Antenna(s) Equipment:

Small Omni Antenna 20" x 3" approximately 2 lbs.

Small Pole Top Omni antenna 24" x 16" approximately 45 lbs.

Small Square antenna 12" x 12" x 5" approx.. 17.2 lbs.

Small Panel antenna 23.3" x 10.6" x 6.2" approx.. 20.31 lbs.

Comment 2: \$3,000/year based upon a consultant's report of fees that included other municipalities' telecommunications policies, including those from San Francisco, LA, NY, Phoenix and Scottsdale, were obtained and used to benchmark the proposed Master Agreement and Usage Fee Scheduled.

Comment 3: Extent is expected to use about 20 poles, paying about \$2,400 per installation. Extenet will install antennas for an annual \$100 fee, in addition to the fee for each installation. In addition, Extenet is being asked to install extra fiber for public use as part of the agreement.

LOCAL MARKET SAMPLES				
Municipality / Utility Company	Annual Rent	Equipment	Lease Parcel Area	Power Included
Greenfield, WI	\$1,800	24" Antenna & 2 RRUs	Ground Equipment	N
Wauwatosa, WI	\$600	24" Antenna & 2 RRUs	Minimal Footprint	N
WE Energies	\$495	24" Antenna & 2 RRUs	Minimal Footprint	N
Madison Gas & Electric	\$66 - \$70	24" Antenna & 2 RRUs	Minimal Footprint	N

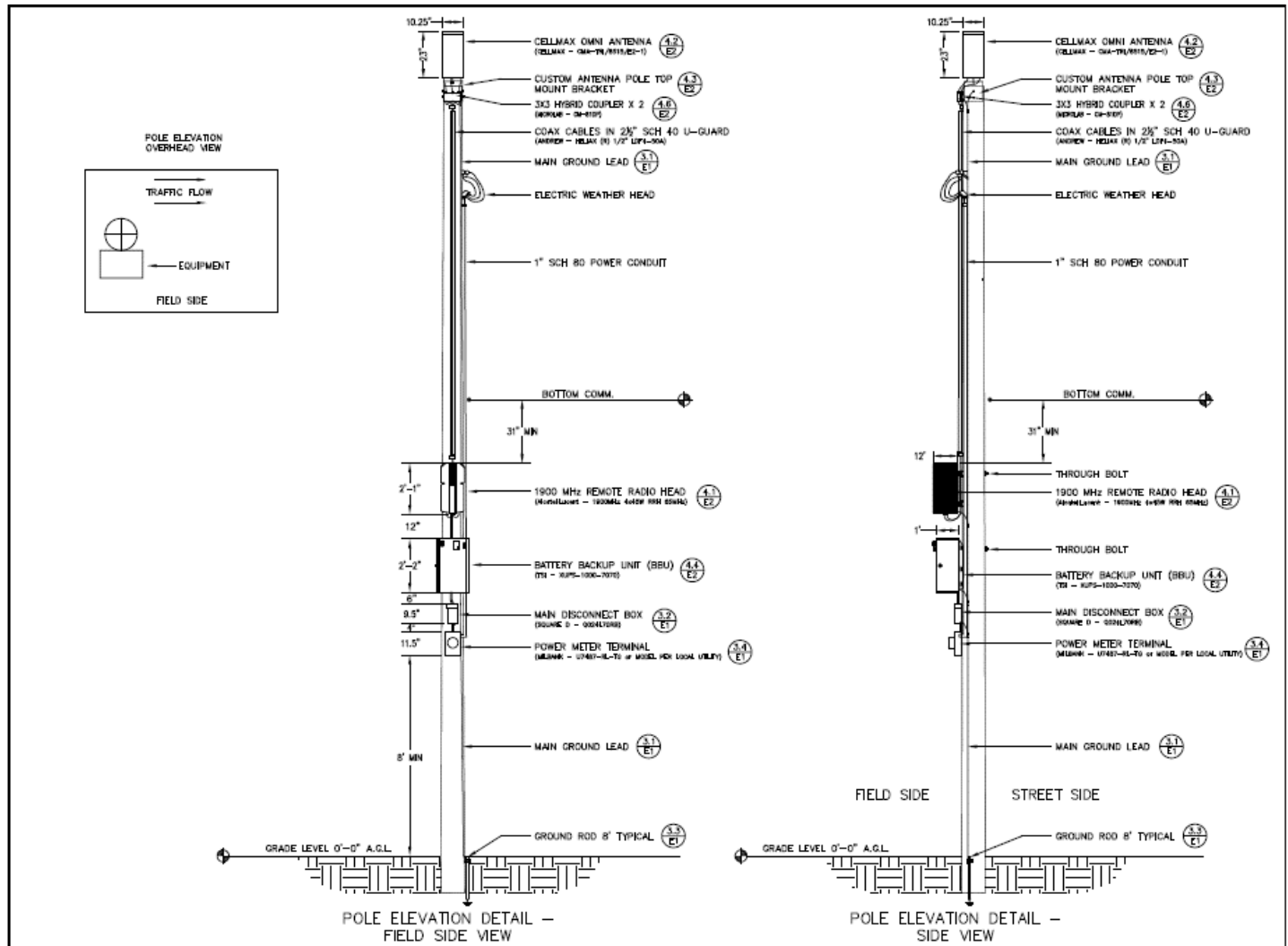
2014	MSA	Census Year				Size Rank			
		2014	2010	2000	1990	1990	2000	2010	2014
1	New York, N.Y.	8,491,079	8,175,133	8,008,278	7,322,564	1	1	1	1
2	Los Angeles, Calif.	3,928,864	3,792,621	3,694,820	3,485,398	2	2	2	2
3	Chicago, Ill.	2,722,389	2,695,598	2,896,016	2,783,726	3	3	3	3
4	Houston, Tex.	2,239,558	2,100,263	1,953,631	1,630,553	4	4	4	4
5	Philadelphia, Pa.	1,560,297	1,526,006	1,517,550	1,585,577	5	5	5	5
6	Phoenix, Ariz.	1,537,058	1,445,632	1,321,045	983,403	10	6	6	6
7	San Antonio, Tex.	1,436,697	1,327,407	1,144,646	935,933	9	9	7	7
8	San Diego, Calif.	1,381,069	1,307,402	1,223,400	1,110,549	6	7	8	8
9	Dallas, Tex.	1,281,047	1,197,816	1,188,580	1,006,877	8	8	9	9
10	San Jose, Calif.	1,015,785	945,942	894,943	782,248	11	11	10	10
11	Austin, Tex.	912,791	790,390	656,562	465,622	25	16	14	11
12	Jacksonville, Fla.	853,382	821,784	735,617	635,230	15	14	11	13
13	San Francisco, Calif.	852,469	805,235	776,733	723,959	14	13	13	14
14	Indianapolis, Ind.	848,788	820,445	781,870	741,952	13	12	12	12
15	Columbus, Ohio	835,957	787,033	711,470	632,910	16	15	15	15
16	Fort Worth, Tex.	812,238	741,206	534,694	447,619	29	27	16	17
17	Charlotte, N.C.	809,958	731,424	540,828	395,934	33	26	17	16
18	Detroit, Mich.	680,250	713,777	951,270	1,027,974	7	10	18	18
19	El Paso, Tex.	679,036	649,121	563,662	515,342	22	23	19	19
20	Seattle, Wash.	668,342	608,660	563,374	516,259	21	24	23	21
21	Denver, Colo.	663,862	600,158	554,636	467,610	28	25	26	22
22	Washington, DC	658,893	601,723	572,059	606,900	19	21	24	23
23	Memphis, Tenn.	656,86	646,889	650,100	610,337	18	18	20	20
24	Boston, Mass.	655,884	617,594	589,141	574,283	20	20	22	24
25	Nashville-Davidson, Tenn.1	644,014	601,222	545,524	510,784	26	22	25	25
26	Baltimore, Md.	622,793	620,961	651,154	736,014	12	17	21	26
27	Oklahoma City, Okla.	620,602	579,999	506,132	444,719	30	29	31	27
28	Portland, Ore.	619,360	583,776	529,121	437,319	27	28	29	29
29	Las Vegas, Nev.	613,599	583,756	478,434	258,295	63	32	30	30
30	Louisville-Jefferson Cty, Ky.2	612,780	597,337	256,231	269,063	58	67	27	28
31	Milwaukee,	599,642	594,833	596,974	628,088	17	19	28	31

	Wis.								
32	Albuquerque, N.M.	557,169	545,852	448,607	384,736	40	35	32	32
33	Tucson, Ariz.	527,972	520,116	486,699	405,390	34	32	33	33
34	Fresno, Calif.	515,986	494,665	427,652	354,202	48	37	34	34
35	Sacramento, Calif.	485,199	466,488	407,018	369,365	37	40	35	35
36	Long Beach, Calif.	473,577	462,257	461,522	429,433	32	34	36	36
37	Kansas City, Mo.	470,800	459,787	441,545	435,146	31	36	37	37
38	Mesa, Ariz.	464,704	439,041	396,375	288,091	53	42	38	38
39	Atlanta, Ga.	456,002	420,003	416,474	394,017	38	39	40	40
40	Virginia Beach, Va.	450,980	437,994	425,257	393,069	39	38	39	39
41	Omaha, Nebr.	446,599	408,958	390,007	335,795	47	44	42	42
41	Colorado Springs, Colo.	445,830	416,427	360,890	281,140	54	48	41	41
43	Raleigh, N.C.	439,896	403,892	–	–	–	–	43	43
44	Miami, Fla.	430,332	399,457	362,470	358,548	46	47	44	44
45	Oakland, Calif.	413,775	390,724	399,484	372,242	35	41	47	45
46	Minneapolis, Minn.	407,207	382,578	382,618	368,383	43	45	48	46
47	Tulsa, Okla.	399,682	391,906	393,049	367,302	44	43	46	47
48	Cleveland, Ohio	389,521	396,815	478,403	505,616	23	33	45	48
49	Wichita, Kans.	388,413	382,368	344,284	–	–	50	49	49
50	New Orleans, La.	384,320	343,829	484,674	495,080	24	38	51	51
51	Arlington, Tex.	383,204	365,438	332,969	261,721	62	54	50	50

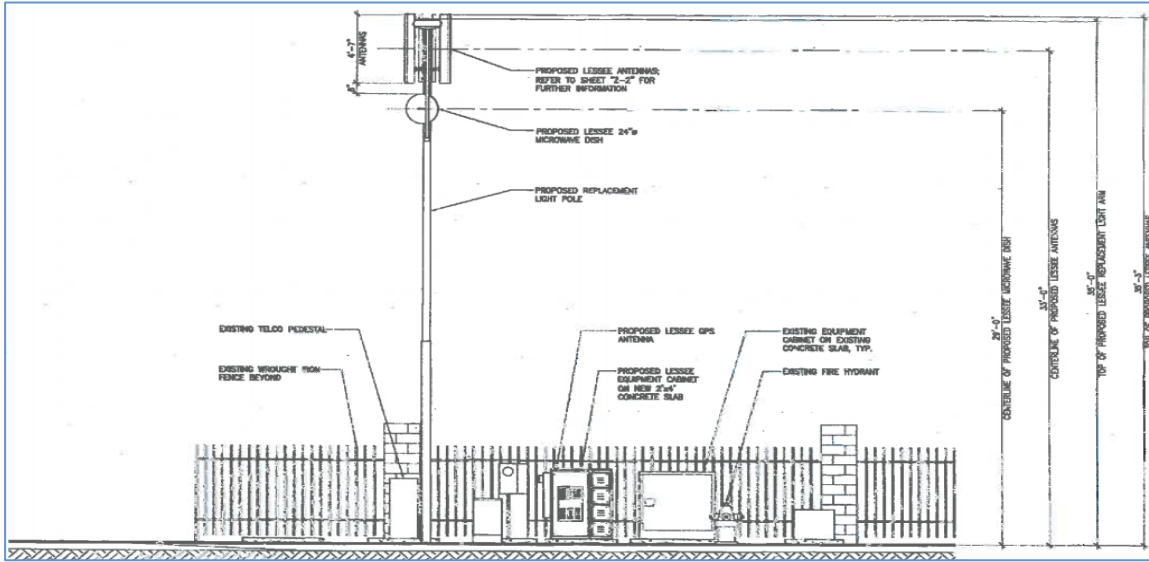
Baltimore Profile

Has battery back-up on pole in addition to lines running up exterior of pole. Verizon poles in MKE are running more than \$5,000/per based on requirements/stipulations that Engineering has requested.

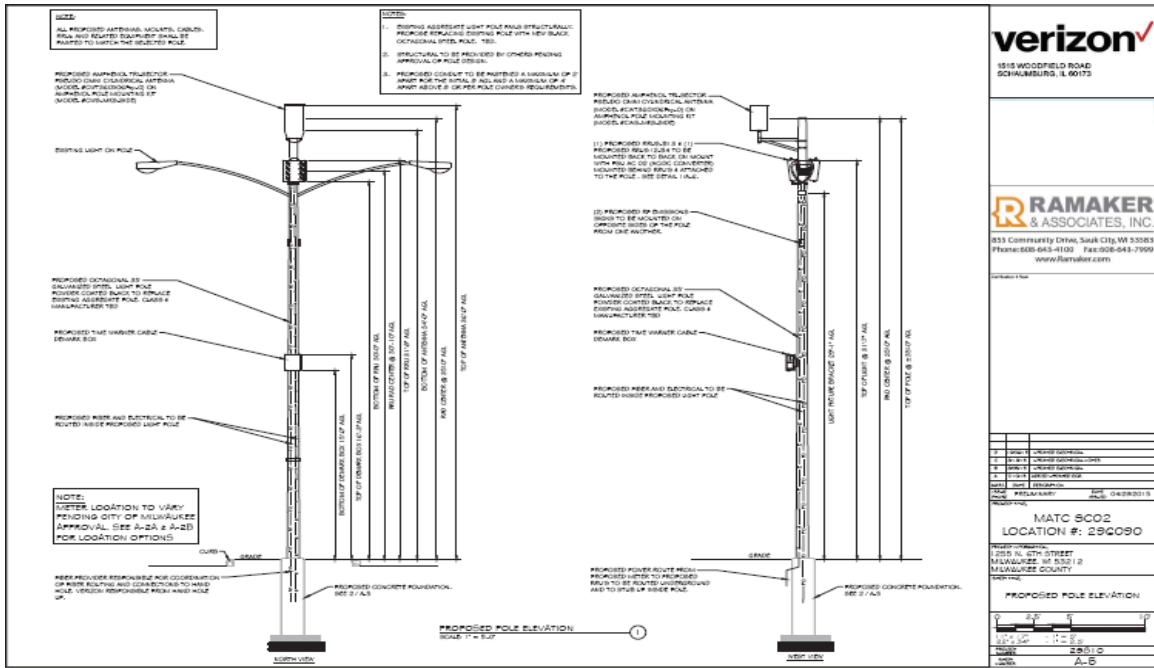
Exhibit is not exclusive of what Verizon or other Carriers involved will install. In Baltimore, ExteNet pays City of Baltimore fees presented in above table, with multiple Carriers paying ExteNet monthly fees for collocation and maintenance. It is a different kind of arrangement than the one being presented to Milwaukee directly from Verizon. A partnership with a company like ExteNet could be pursued in addition to the partnership with Verizon.



Glendale AZ Profile



City of Milwaukee Profile



NOTES:

- ALL PROPOSED ANTENNAS, MOUNTS, GRILLS, RRU SOLAR SHIELDS AND RELATED EQUIPMENT SHALL BE PAINTED TO MATCH THE UTILITY POLE. DO NOT PAINT RRUS.
- PROPOSED PSU AND DC JUNCTION CONVERTERS MOUNTED BEHIND RRUS.

EQUIPMENT MOUNTING DETAIL
SCALE: 1/8"=1'

ITEM #	DESCRIPTION	QUANTITY	UNIT
1	RRU 12	1	EA
2	SOLAR SHIELD	1	EA
3	WOOD POLE CONDUIT HANGER	1	EA
4	RRU MOUNTING DETAIL	1	EA

RRU MOUNTING DETAIL
SCALE: 1/8"=1'

NOTES:

- PROPOSED RISER PIPES NEED TO BE REMOVED FROM RRUS TO BE INSTALLED PER CHANGED REQUIREMENTS.
- PROPOSED RISER GUARD TO BE INSTALLED PER CHANGED REQUIREMENTS.
- PROPOSED JUMPER FROM RRUS TO PROPOSED ANTENNA, SHIELDING TO BE RAN BEHIND UNGUARD.
- PROPOSED EMISSION RRUS TO BE MOUNTED TO POLE WITH SITE PING UNDER LIGHTWEIGHT 1" STANDOFF JUMPER.
- PROPOSED 12 GAUGE AC POWER FEEDS FROM DISCONNECT TO PSU.

RRU MOUNTING DETAIL
SCALE: 1/8"=1'

NOTE: PROPOSED CONDUIT TO BE INSTALLED A MINIMUM OF 2" APART FOR THE INITIAL 2' AND A MINIMUM OF 4" APART THEREAFTER PER THE ENCLOSED SPECIFICATIONS.

WOOD POLE CONDUIT HANGER
SCALE: 1/8"=1'

RRUS 12 – BAND 4 (AWS)

MIMO Support
Up to 2x60W

RF Output Power
Up to 2x60W

RBW
40 MHz

Dimensions:
with solar-shield and handle: W: 18.5 in (470 mm), H: 20.4 in (518 mm), D: 7.5 in (190 mm)

Weight
58 lb (26.3 kg)

Power
-48v or AC with AC PSU

Temperature
-40 to +131°F (-40 to +55°C)

Solar radiation
≤ 1,120 W/m²

Commercial in Confidence Rev A

RRUS & A2 B13 DATA SHEET

- Remote Radio Units (RRUS)
 - RRUS for B13 (U700C)
 - 10 MHz LTE
 - 2x40 W
 - 51 lbs (23Kg) – RRUS B13 only

RRUS B13
H x W x D (in): 19.7 x 17 x 7.2
Weight (lbs): 51
Note: w/ Solar Cover, w/o handle

RRU DETAILS
SCALE: 1/8"=1'

RRUS 12

Position	Description	Marking
A	Display indicator	
B	Maintenance location	
C	12V DC power supply	POWER
D	Grounding	
E	AC power input terminal	AC
F	External alarm (2 channel)	
G	Antenna A	AAA-004
H	Antenna B	AAA-004
I	Cross connect BNC	AAA-010
J	Cross connect BNC	AAA-010
K	Antenna B	AAA-004
L	External alarm 1 (BNC)	
M	External alarm 2 (BNC)	

RRU CONNECTION
SCALE: 1/8"=1'



Cabling for City of Milwaukee will be internal

