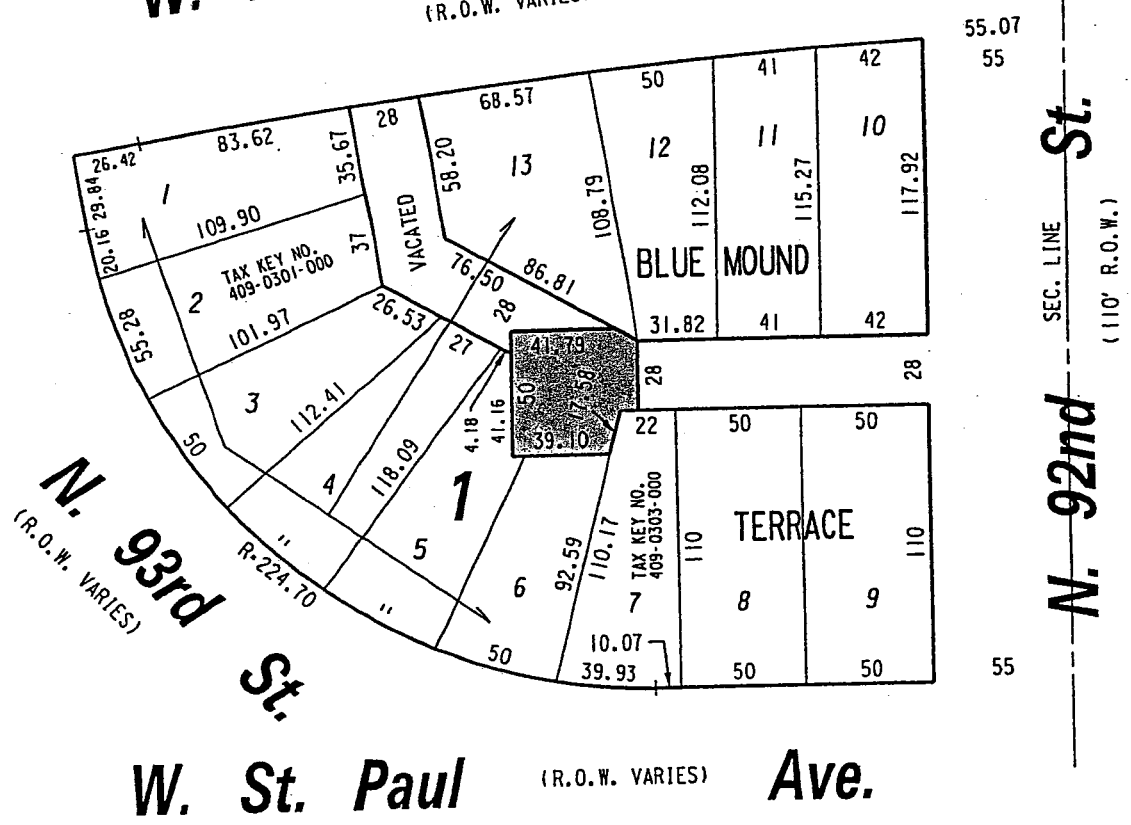



**W. Blue Mound Rd.**  
(R.O.W. VARIES)



 PORTION OF PUBLIC ALLEY PROPOSED TO BE VACATED

**EXHIBIT "A"**  
**FILE NO. 020383**  
**INFRASTRUCTURE SERVICES DIVISION**  
MILWAUKEE, WISCONSIN

ASSIGNED TO: W.E. FUCHS  
DRAWN BY: W.E.F.  
PROJECT/GRANT NO.: WK52337164  
APPROVED BY:

CH'K'D. BY: M.C. WILLIAMS  
DATE: AUG. 26, 2002  
SCALE: 1" = 60'

*Marcia Lindholm*  
CENTRAL DRAFTING & RECORDS MANAGER

*Jeffrey Blumke*  
CITY ENGINEER

en:\engr\pl\vacation\1164.vac