

St. Ann Center for Intergenerational Care
Minor Modification to Detailed Planned Development
File No. 160609
2450 West North Avenue

This minor modification to the Detailed Planned Development (DPD) is being requested by St. Ann Center for Intergenerational Care to permit building wall signage and a freestanding sign for the site. This statement, together with the below described exhibits and supporting materials, comprises the modified DPD.

- I. List of exhibits
 - a. Owner's statement of intent
 - b. Vicinity map
 - c. Site photos
 - d. Signage details

- II. Description of minor modification

In 2013, a Detailed Planned Development (DPD) was established for St. Ann Center for Intergenerational Care at 2450 West North Avenue (File No. 121324). The DPD permitted construction of a 2-story facility that provides services that include community-based health and educational programming for children, the elderly, and adults with disabilities, as well as personal care services and childcare and respite services. The scope of these services includes, but is not limited to 24-hour childcare, adult daycare, dementia and respite care and after school care for children. There will be a small retail component on the site that will sell items made by clients and by Sisters.

The original DPD approval did not include signage for the facility. Now that the center is in operation, St. Ann Center has assessed its needs for signage and proposes to add the following:

1. Building wall signage: Quantity two (2) signs located on the south and west elevations of the building on the spire located next to the drive canopy, illuminated with LEDs, aluminum and polycarbonate, 40 square feet each sign.
2. Freestanding monument sign: perpendicular to North Ave behind the security fence (location marked submittal site plan), 13' high and 10' wide, aluminum construction with polycarbonate and steel vertical supports, – with an 18.75 sq. ft. changeable electronic message sign.
3. Temporary signs: Up to (3) 3' x 10' Temporary vinyl Graphic Banners to display enrollment, events, etc.

All lighting will meet the requirements of the Milwaukee Code of Ordinances. All other aspects of the previously approved DPD are not affected by this minor modification.

St. Ann Center

Signage Location

Legend

 2450 W North Ave

Building Signage



Proposed Area for Monument



Illuminated Bldg Sign - Oval Option

(2) Req'd

3/8" = 1'-0" SCALE

Fabricate and Install face-lit cabinet on (2) sides of bldg. "clocktower".

Cabinet formed from routed alum backer w/ welded returns, routed retainer and white poly face masked and painted to match PMS 207 C Burgundy (opaque).

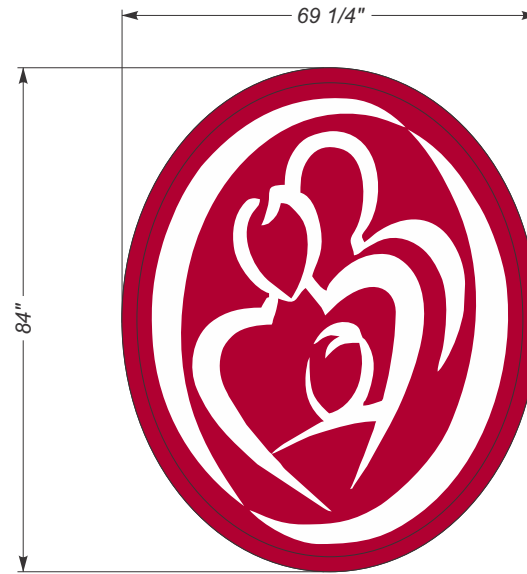
Fabricate w/ access panels for servicing.

120V Primary Electrical Connection to Existing Power and Hook-up by Others.

Note: will need official vector artwork for production.
No avail pictures of building N. Elevation.



PMS 207 C Burgundy



3/8" = 1'-0" SCALE



S. Elevation

1/16" = 1'-0" SCALE



S. Elevation - Night View

SignEffectz, Inc™

SIGN / LIGHTING

www.signeffectz.com

1827 W GLENDALE AVE., GLENDALE, WI 53209
PH: 414.264.5504 FX: 414.264.5564



Project:

St. Ann Center

Project Location:

2450 W North Ave
Milwaukee, WI 53205

Billing Location:

SAME

CONCEPT DEVELOPMENT

Sales Rep: J. Brown

Date: 02/26/16

D/F Illuminated Monument
w/ EMCs.
Building Sign & FCOs

Disclaimer:

THIS IS AN ORIGINAL DESIGN CREATED BY SIGN EFFECTZ. THE SUBMITTED DESIGN PROTECTED UNDER COPYRIGHT LAWS OF THE UNITED STATES CODE YOU AGREE NOT TO COPY PHOTOGRAPH MODIFY OR SHARE DIRECTLY OR INDIRECTLY ANY OF THE FOREGOING HELD BY YOU WITH ANY OTHER PARTY, NOR WILL YOU PERMIT ANY THIRD PARTY TO DO ANY OF THE FOREGOING WITHOUT THE WRITTEN CONSENT OF SIGN EFFECTZ.

THIS SIGN IS INTENDED TO BE INSTALLED IN ACCORDANCE WITH THE REQUIREMENTS OF ARTICLE 600 OF THE NEC AND/OR OTHER APPLICABLE LOCAL CODES. THIS INCLUDES PROPER GROUNDING AND BONDING OF THE SIGN.

Notes

see if N. Elev. is similar area to S. Elev.

REVISIONS:

Rev A	By	Date
Rev B	By	Date
Rev C	By	Date
Rev D	By	Date
Rev E	By	Date
Rev F	By	Date

Scale: As noted

Original Page Size: 8 1/2" x 11"

9796321

C_04

INS - PROJ NO.

DESIGN PG

REV NO.

ESTIMATE NO.

Work Order #:



Illuminated D/F Monument w/ EMCs

(1) Req'd

1/4" = 1'-0" SCALE

Fabricate and Install D/F Illuminated Monument w/ EMCs behind fenced area by south entrance of property.

(1) D/F Top Cab formed from extruded alum w/ (2) routed alum faces backed w/ white poly and welded to extruded alum retainers. Internal illumination from white leds (both sides).

(2) EMCs are 17mm pitch 32 x 128 monochrome 1'10" x 7'4" display. TBD. (avail. in amber or red, shown in red)

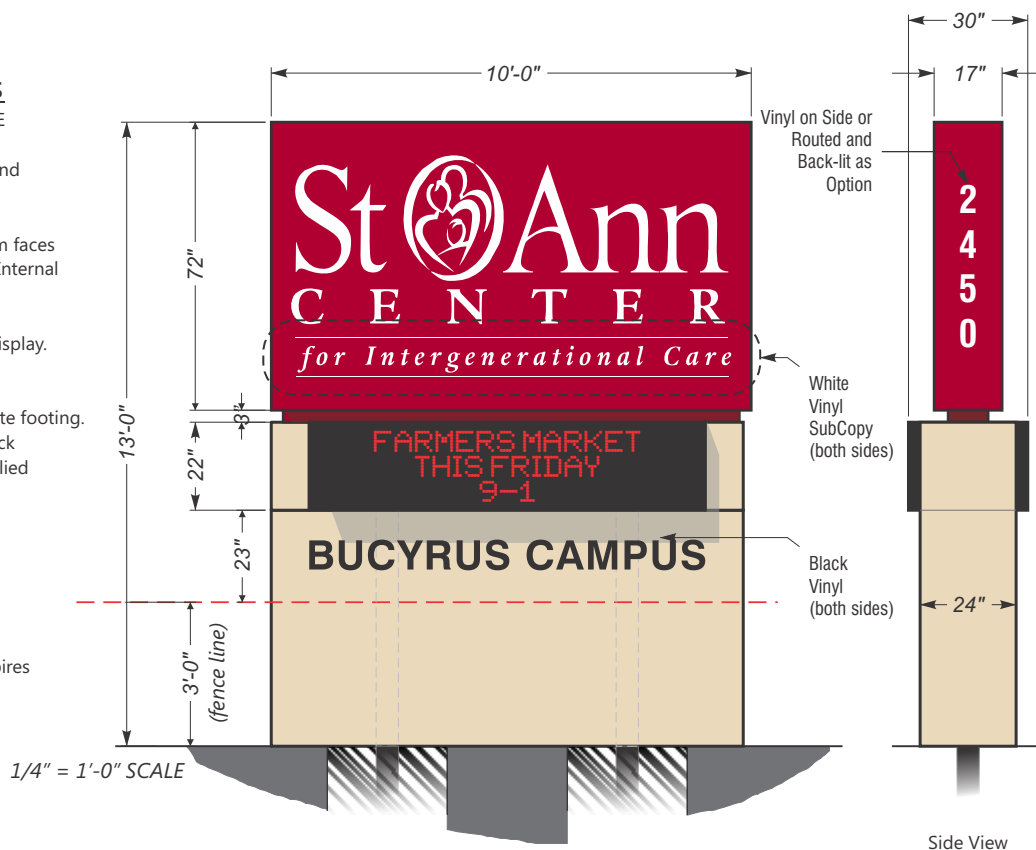
D/F Cabinet and EMCs fastened to (2) steel poles set in concrete footing. Pole skirt and cladding formed from alum angle and sheet stock painted MP Satin White. Address numerals are 1st surface applied black graphic film (both sides).

120V Primary Electrical Connection to Existing Power and Hook-up by Others.

Note: will need official vector artwork for production. Customer loves existing sign at location on E. Morgan for exception of the message unit. Existing sign on E. Morgan inspires new sign at North Ave. location.

 PMS 207 C Burgundy

 Match Bldg Brick Exterior



SignEffectz, Inc.™
SIGN / LIGHTING

www.signeffectz.com

1827 W GLENDALE AVE., GLENDALE, WI 53209
PH: 414.264.5504 FX: 414.264.5564



Project:

St. Ann Center

Project Location:

2450 W North Ave
Milwaukee, WI 53205

Billing Location:

SAME

CONCEPT DEVELOPMENT

Sales Rep: J. Brown

Date: 02/26/16

D/F Illuminated Monument w/ EMCs.
Building Sign & FCOs

Disclaimer:

THIS IS AN ORIGINAL DESIGN CREATED BY SIGN EFFECTZ. THE SUBMITTED DESIGN PROTECTED UNDER COPYRIGHT LAWS OF THE UNITED STATES CODE YOU AGREE NOT TO COPY PHOTOGRAPH MODIFY OR SHARE DIRECTLY OR INDIRECTLY ANY OF THE FOREGOING HELD BY YOU WITH ANY OTHER PARTY, NOR WILL YOU PERMIT ANY THIRD PARTY TO DO ANY OF THE FOREGOING WITHOUT THE WRITTEN CONSENT OF SIGN EFFECTZ.

THIS SIGN IS INTENDED TO BE INSTALLED IN ACCORDANCE WITH THE REQUIREMENTS OF ARTICLE 600 OF THE NEC AND/OR OTHER APPLICABLE LOCAL CODES. THIS INCLUDES PROPER GROUNDING AND BONDING OF THE SIGN.

Notes

Difference between monument on E. Morgan ave is EMC and closed pole skirt to avoid pylon class sign.

REVISIONS:

Rev A shortened to 12'-0" tall, 1'10" x 7'4" EMCs By AE Date 03/15/16
Rev B sign body (not cab) to match exterior bldg color By AE Date 03/15/16
Rev C renderings to 12' tall - address # end up smaller By AE Date 03/15/16
Rev D made cab 72" tall like other loc. - non SignComp By AE Date 03/15/16
Rev E added projected bldg color, address on side, side projection By AE Date 03/16/16
Rev F add 11ft to height, "Bucyrus Campus" under EMC in vinyl By AE Date 03/17/16
Rev G "for Intergenerational Care" to be White Vinyl By AE Date 03/17/16

Scale: 1/4" = 1'-0"

Original Page Size: 8 1/2" x 11"

9796321

C_03

R5

INS - PROJ NO.

DESIGN PG

REV NO.

ESTIMATE NO.

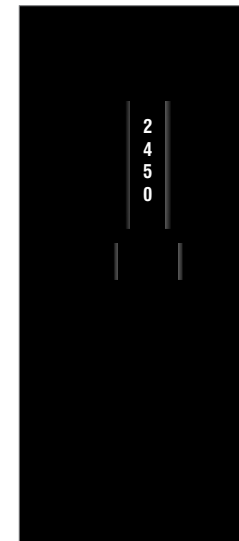
Work Order #:

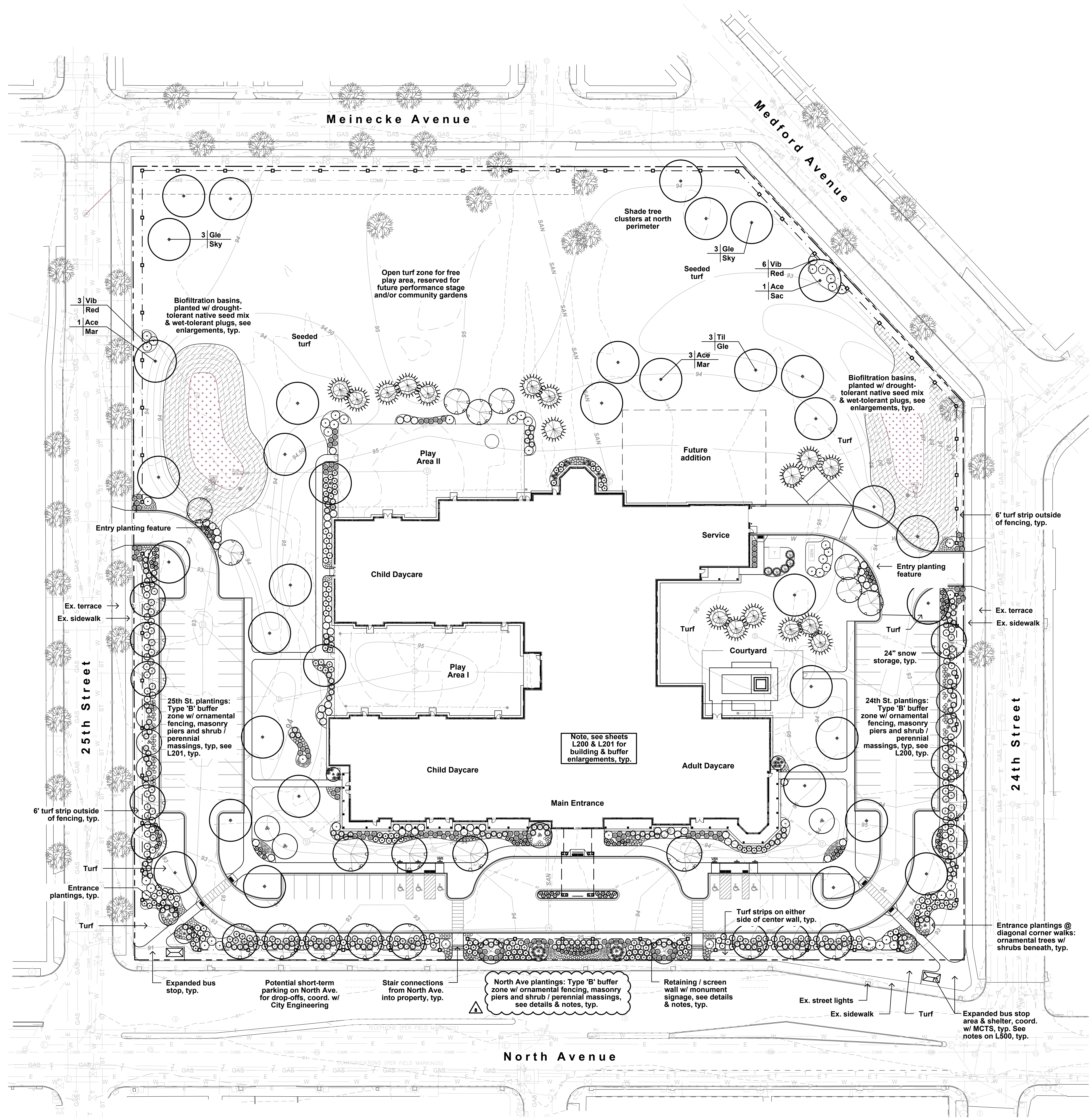


Projected Monument Sign - NTS - Final Placement TBD



Projected Night View - NTS - Final Placement TBD





Consultant:

Project:
ST ANN CENTER FOR INTERGENERATIONAL CARE

Location: 25th St. and North Ave
 Milwaukee, WI

Key Plan:

Sheet:
Overall Site / Landscape Plan

Scale:
 1"=30'-0" @ 42x30"

Revisions:

No.	Date	Description
1	04/08/14	BD PACKAGE #1 - ADD #1
2	08/25/14	BD PACKAGE #1 - ADD #2
3	09/17/14	BD PACKAGE #2
4	10/01/14	BD PACKAGE #3
5	10/01/14	BD PACKAGE #1 - CS #1
6	10/02/14	BD PACKAGE #1 - ADD #1
7	10/03/14	BD PACKAGE #1 - CS #2
8	10/15/14	BD PACKAGE #1 - CS #3
9	10/17/14	BD PACKAGE #2 - CS #4
10	11/07/14	CONSTRUCTION BULLETIN #5

Date:
 March 31, 2014

Project No.:
 120054.00

Sheet No.:

L100