

EXTERIOR WINDOW SCHEDULE

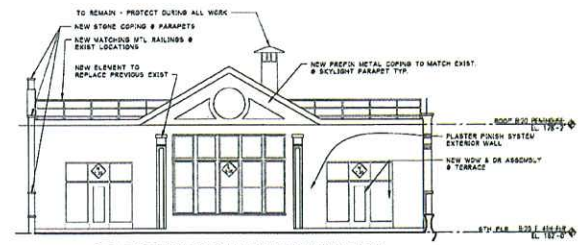
NO.	MFR.		SERIES	COLORS		REMARKS
	INT.	EXTER.		INT.	EXTER.	
1	W	W	W-100	W-100	W-100	
2	W	W	W-100	W-100	W-100	
3	W	W	W-100	W-100	W-100	
4	W	W	W-100	W-100	W-100	
5	W	W	W-100	W-100	W-100	
6	W	W	W-100	W-100	W-100	
7	W	W	W-100	W-100	W-100	
8	W	W	W-100	W-100	W-100	
9	W	W	W-100	W-100	W-100	
10	W	W	W-100	W-100	W-100	
11	W	W	W-100	W-100	W-100	
12	W	W	W-100	W-100	W-100	
13	W	W	W-100	W-100	W-100	
14	W	W	W-100	W-100	W-100	
15	W	W	W-100	W-100	W-100	
16	W	W	W-100	W-100	W-100	
17	W	W	W-100	W-100	W-100	
18	W	W	W-100	W-100	W-100	
19	W	W	W-100	W-100	W-100	
20	W	W	W-100	W-100	W-100	
21	W	W	W-100	W-100	W-100	
22	W	W	W-100	W-100	W-100	
23	W	W	W-100	W-100	W-100	
24	W	W	W-100	W-100	W-100	
25	W	W	W-100	W-100	W-100	
26	W	W	W-100	W-100	W-100	
27	W	W	W-100	W-100	W-100	
28	W	W	W-100	W-100	W-100	
29	W	W	W-100	W-100	W-100	
30	W	W	W-100	W-100	W-100	
31	W	W	W-100	W-100	W-100	
32	W	W	W-100	W-100	W-100	
33	W	W	W-100	W-100	W-100	
34	W	W	W-100	W-100	W-100	
35	W	W	W-100	W-100	W-100	
36	W	W	W-100	W-100	W-100	
37	W	W	W-100	W-100	W-100	
38	W	W	W-100	W-100	W-100	
39	W	W	W-100	W-100	W-100	
40	W	W	W-100	W-100	W-100	
41	W	W	W-100	W-100	W-100	
42	W	W	W-100	W-100	W-100	
43	W	W	W-100	W-100	W-100	
44	W	W	W-100	W-100	W-100	
45	W	W	W-100	W-100	W-100	
46	W	W	W-100	W-100	W-100	
47	W	W	W-100	W-100	W-100	
48	W	W	W-100	W-100	W-100	
49	W	W	W-100	W-100	W-100	
50	W	W	W-100	W-100	W-100	

NOTES:
 1. WINDOW JOINTS SHALL BE SEaled WITH SILICONE SEALANT. SEE SECTION 05050-00-00 FOR DETAILS.
 2. TYPICAL REPLACEMENT UNITS SHALL BE THERMALLY BROKEN ALUMINUM WINDOWS WITH CLEAR LOW-E INSULATING GLASS WITH MINIMUM LIGHT TRANSMITTANCE OF 72%.
 3. REPLACEMENT WINDOWS SHALL MATCH EXISTING CONFIGURATIONS AS CLOSELY AS POSSIBLE - SEE EXISTING AND PROPOSED DETAILS.
 4. ALL WINDOWING TO BE WEATHER TIGHT AT THE COMPLETION OF EACH INSTALLATION.
 5. GLAZING & EXPOSED FINISHES TO TO FREE OF LABELS, GLUE AND PACKING MATERIALS AT THE COMPLETION OF INSTALLATION - INTERIOR & EXTERIOR FACES.

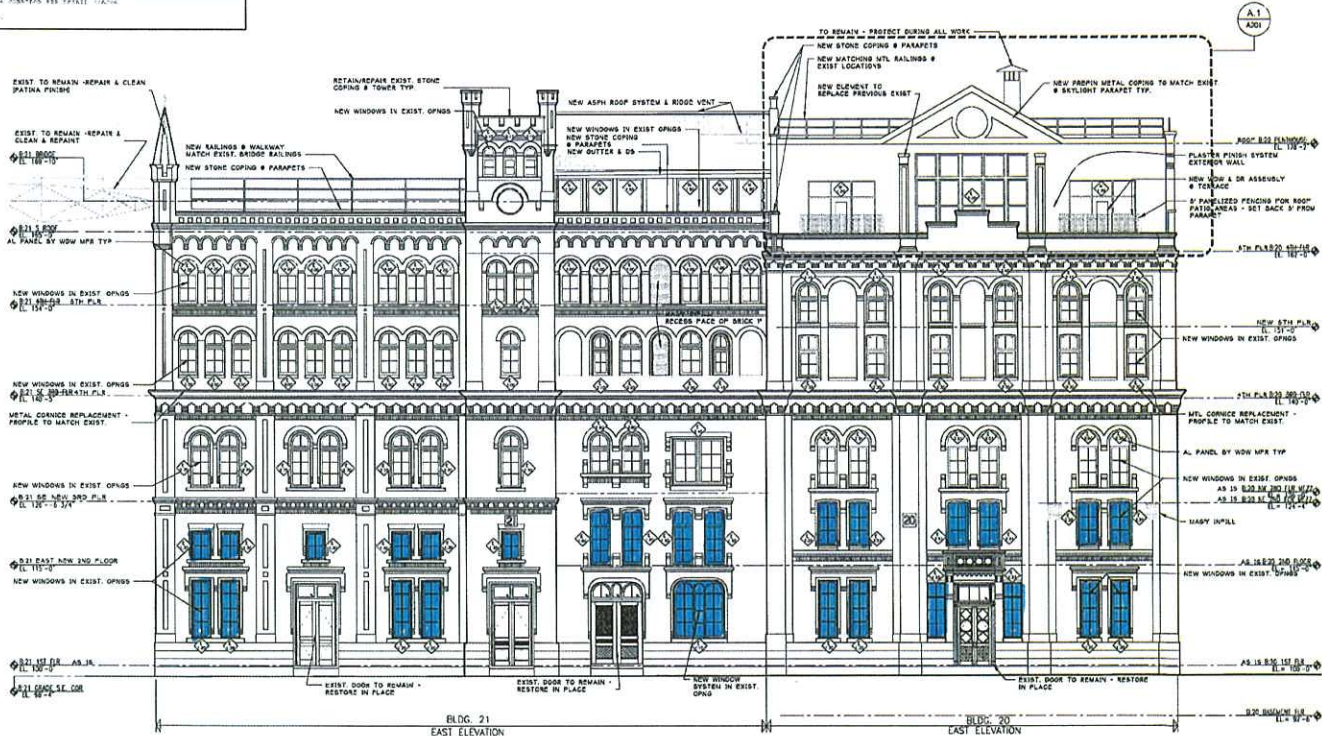
1 WINDOW SCHEDULE
SCALE: 1/8" = 1'-0"

2 WINDOW REPLACEMENT NOTES
SCALE: 1/8" = 1'-0"

First two stories Proposed for Wood (Street Facing only)



A.1 EXTERIOR BUILDING ELEVATION
SCALE: 1/8" = 1'-0"



A EAST EXTERIOR BUILDING ELEVATION
SCALE: 1/8" = 1'-0"

GORMAN
 REAL ESTATE
 DEVELOPMENT &
 MANAGEMENT
 200 N. MAIN STREET
 OREGON, WI 53575

The Brewhouse
 ALL SUITES HOTEL
 1203 NORTH 10TH STREET
 MILWAUKEE, WISCONSIN

Project No. 1001-00-1008
 Plot Date: 01/10/17
 Drawn by: crd

Issue dates:
 2010.11.12 PRELIMINARY BIDDING
 2011.07.28 BD PACKAGE #1
 2011.08.19 BD PACKAGE #2
 2012.04.05 AS #1

Sheet Title
BUILDING EXTERIOR ELEVATION

Sheet No.
A201



THE BREWERY™

A Joseph J. Zilber Historic Redevelopment



*Officers of
Brewery Project LLC*

*Joseph J. Zilber,
Chairman of the Board
and Owner*

*John W. Kersey,
President*

*Thomas G. Bernacchi,
Vice President*

*Stephan J. Chevalier,
Vice President*

*Daniel J. McCarthy,
Vice President*

*Michael P. Mervis,
Vice President*

*James B. Young,
Vice President &
General Counsel*

Construction Officers

*Donald A. Mantz,
President
KM Development Corp.
Supervising Executive*

*James C. Theusch,
Executive Vice President
KM Development Corp.
Director of Construction*

*Kevin Mantz,
Architect
KM Development Corp.
Director of Design*

*Gary Condon,
Project Superintendent*

May 31, 2012

Alderman Bob Bauman
City Hall
200 E. Wells Street, Room 205
Milwaukee, WI 53202

Dear Alderman Bauman:

Attached is a drawing showing the wood window treatments that can be installed on buildings 20 and 21, first and second floor. I believe this matches your proposal. Please let me know if you have any questions.

I am dropping off a duplicate set for Paul.

Very truly yours,

BREWERY PROJECT LLC



Michael P. Mervis
Vice President