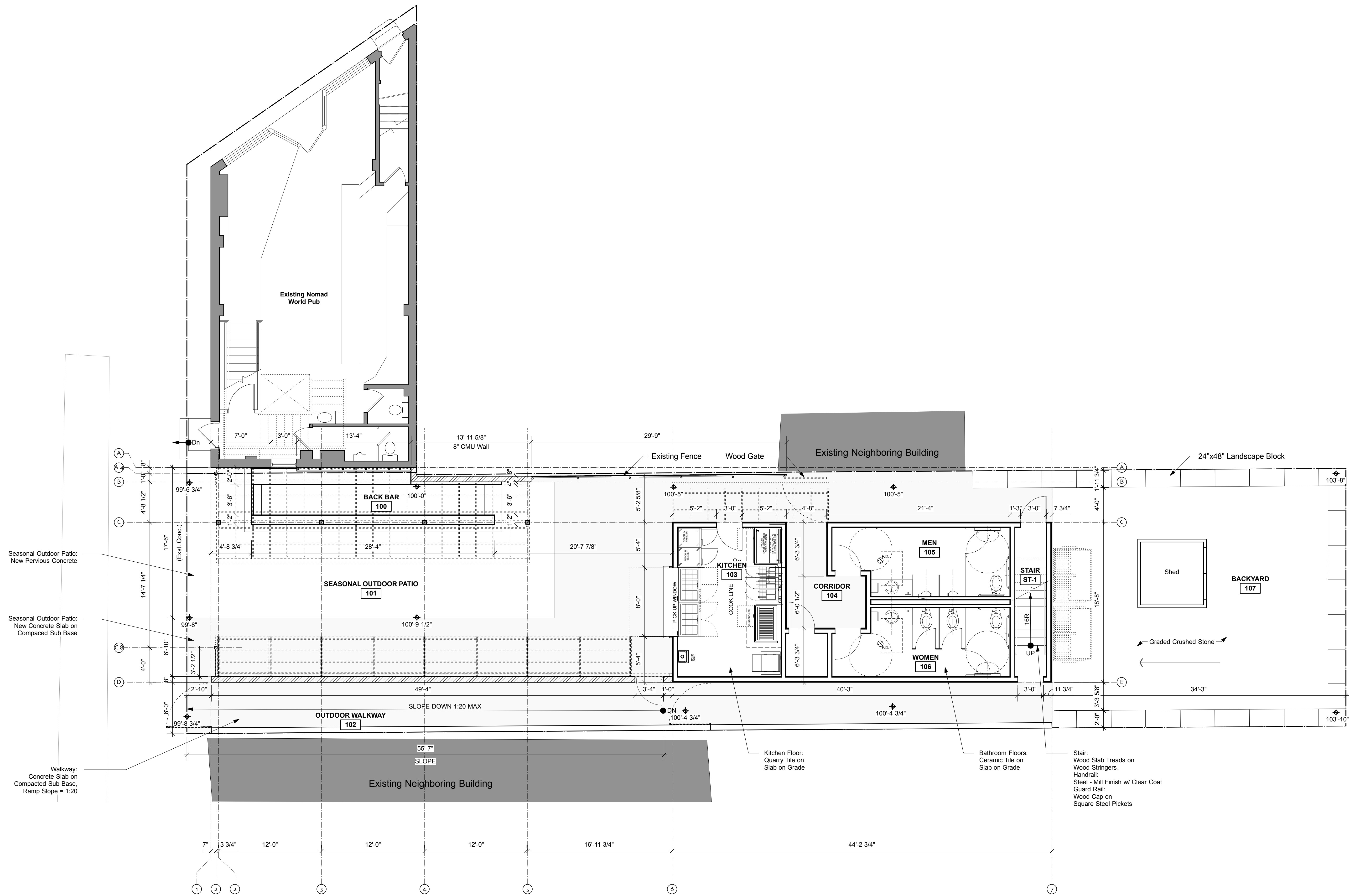


PROJECT
Nomad - Seasonal Outdoor Biergarten

New Construction
 1672 N. Warren Ave.
 Milwaukee, WI 53202

OWNER
NOMADIC VENTURES INC.
 1401 E. Brady St.
 Milwaukee, WI 53202
 p: 414.224.8111

STRUCTURAL ENGINEER
SPIRE ENGINEERING, INC
 600 W. Virginia St., Suite 102
 Milwaukee, WI 53204
 p: 414.278.6200



Seasonal Outdoor Patio:
 New Pervious Concrete

Seasonal Outdoor Patio:
 New Concrete Slab on
 Compacted Sub Base

Walkway:
 Concrete Slab on
 Compacted Sub Base,
 Ramp Slope = 1:20

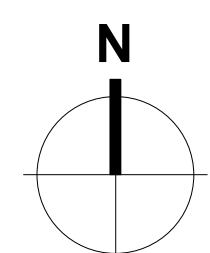
GENERAL DEMO NOTES

1. ALL INFORMATION CONCERNING EXISTING CONDITIONS SHALL BE FIELD VERIFIED PRIOR TO CONSTRUCTION OR MATERIAL FABRICATION. NOTIFY ARCHITECT AND OWNER FOR POSSIBLE REMEDIAL ACTION IF ACTUAL CONDITIONS DIFFER FROM THOSE SHOWN HERE.

SYMBOL KEY

— EXISTING WALL TO REMAIN

- - - - - DASHED LINE INDICATES ITEMS TO BE REMOVED



Milwaukee Historic
 Preservation
 Commission

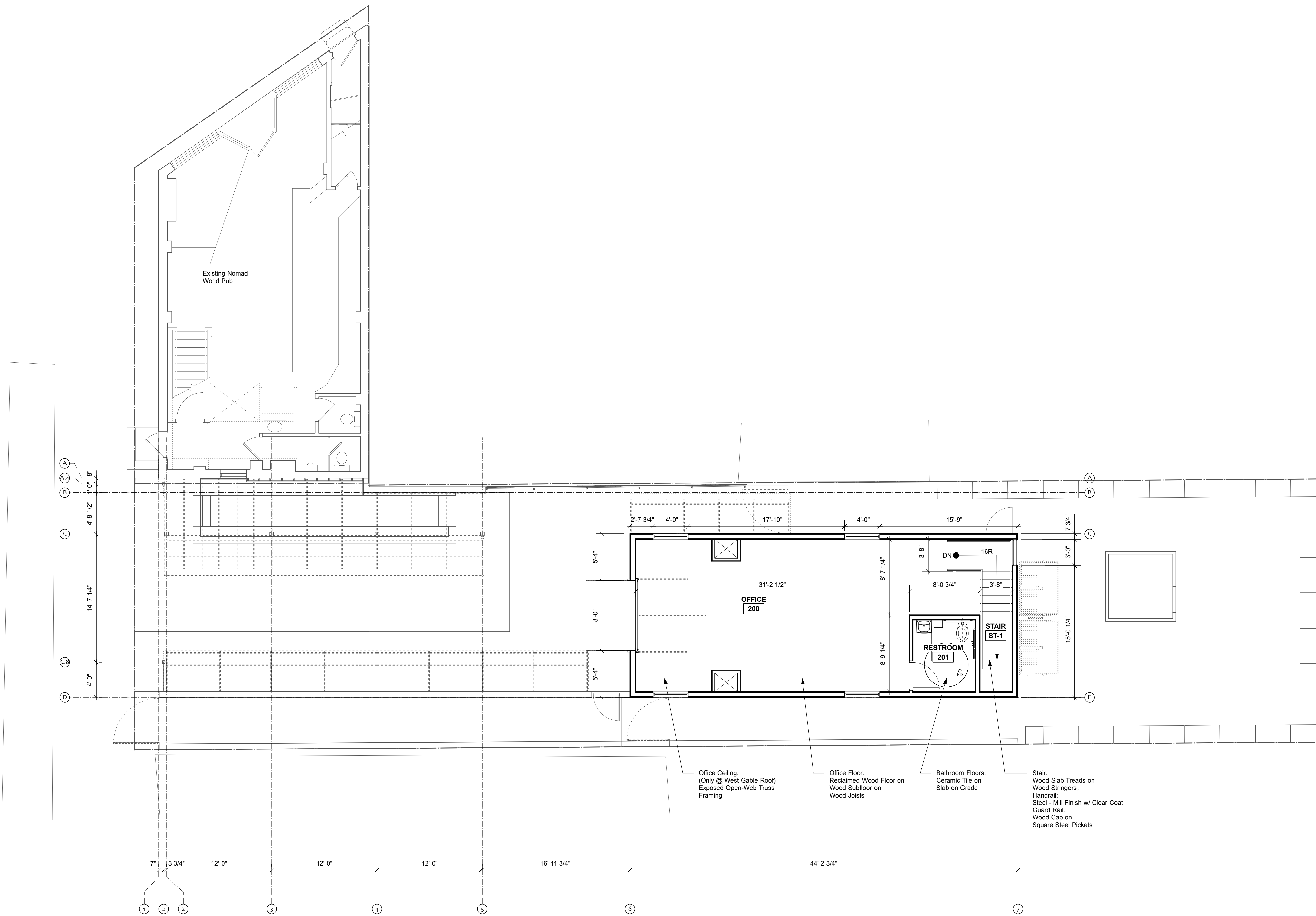
REVISIONS

NO.	DATE	DESCRIPTION

DATE
 October 18, 2016

PROJECT NUMBER
 213716.00

SHEET TITLE



Milwaukee Historic Preservation Commission

REVISIONS

NO.	DATE	DESCRIPTION

DATE
 October 18, 2016

PROJECT NUMBER
 213716.00

SHEET TITLE

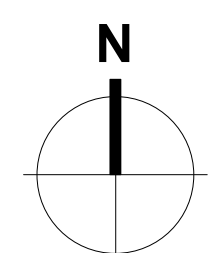
GENERAL DEMO NOTES

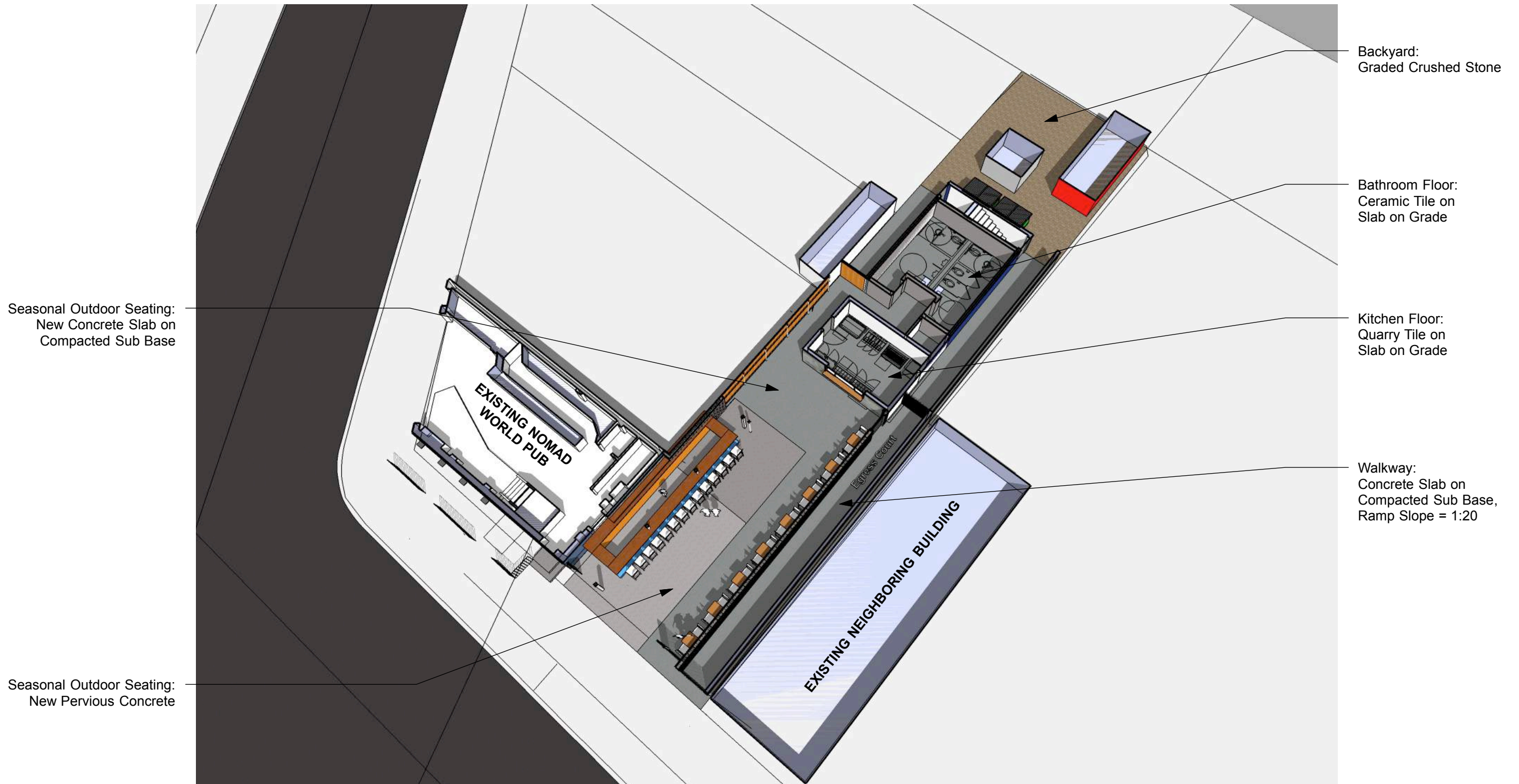
1. ALL INFORMATION CONCERNING EXISTING CONDITIONS SHALL BE FIELD VERIFIED PRIOR TO CONSTRUCTION OR MATERIAL FABRICATION. NOTIFY ARCHITECT AND OWNER FOR POSSIBLE REMEDIAL ACTION IF ACTUAL CONDITIONS DIFFER FROM THOSE SHOWN HERE.

SYMBOL KEY

— EXISTING WALL TO REMAIN

- - - DASHED LINE INDICATES ITEMS TO BE REMOVED

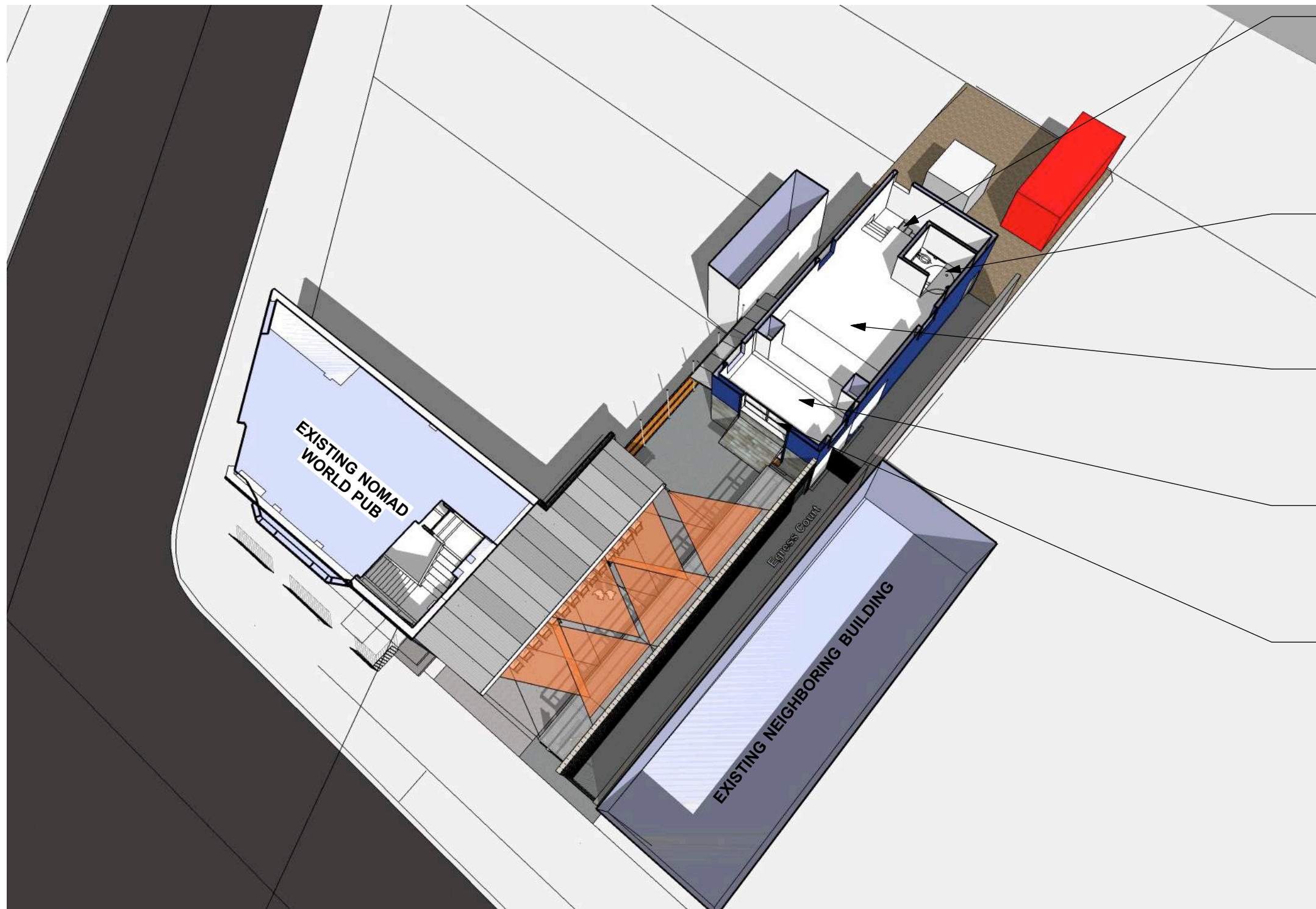




1
A2.0

GROUND LEVEL - AERIAL PERSPECTIVE

Scale: NTS



Stair:
 Wood Slab Treads on
 Wood Stringers,
 Handrail:
 Steel - Mill Finish w/ Clear Coat
 Guard Rail:
 Wood Cap on
 Square Steel Pickets

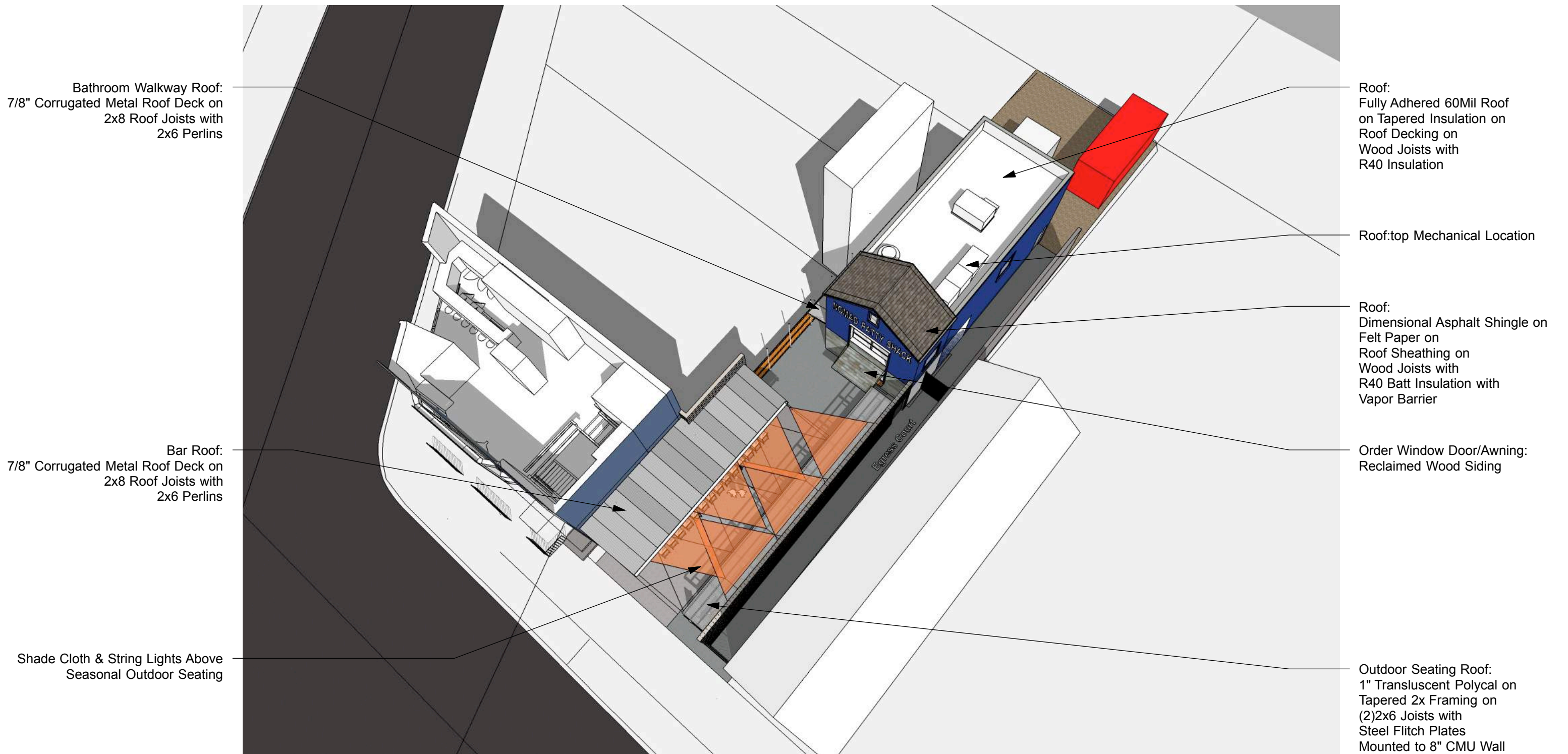
Bathroom Floor:
 Ceramic Tile on
 Cement Board on
 Wood Subfloor on
 Wood Joists

Office Floor:
 Reclaimed Wood Floor on
 Wood Subfloor on
 Wood Joists

Office Ceiling:
 (Just @ West Gable Roof)
 Exposed Open-Web Joists

Office Window:
 Anodized Aluminum
 "Hopper" Window
 (Hydraulic Powered)

1 **SECOND LEVEL - AERIAL PERSPECTIVE**
 A2.1 Scale: NTS



1 **ROOF LEVEL - AERIAL PERSPECTIVE**
 A2.2 Scale: NTS



1 **WARREN AVENUE AERIAL PERSPECTIVE**
 A2.3 Scale: NTS



Windows:
Anodized Aluminum
Storefront Window System

Bar Roof:
7/8" Corrugated Metal Roof Deck on
2x8 Roof Joists with
2x6 Perlins
Supported by 6x6 Posts

Masonry Wall:
8" Painted CMU

Back of Bar Wall:
Reclaimed Wood Siding on
2x4 Wood Furring

Window:
New Anodized Aluminum
Storefront in Existing Wall

Retractable Metal Security Gate

New Pervious Concrete

Existing Stoop & Sidewalk

Wood Wall:
Painted Wood Siding on
Furring Strips on
Rigid Insulation on
Air and Water Barrier on
Exterior Sheathing on
Batt Insulation on
Wood Studs on
Vapor Barrier on
Interior Wall Finish

Shade Cloth & String Lights

Outdoor Seating Roof:
1" Translucent Polycal on
Tapered 2x Framing on
(2)2x6 Joists with
Steel Fitch Plates
Mounted to 8" CMU Wall

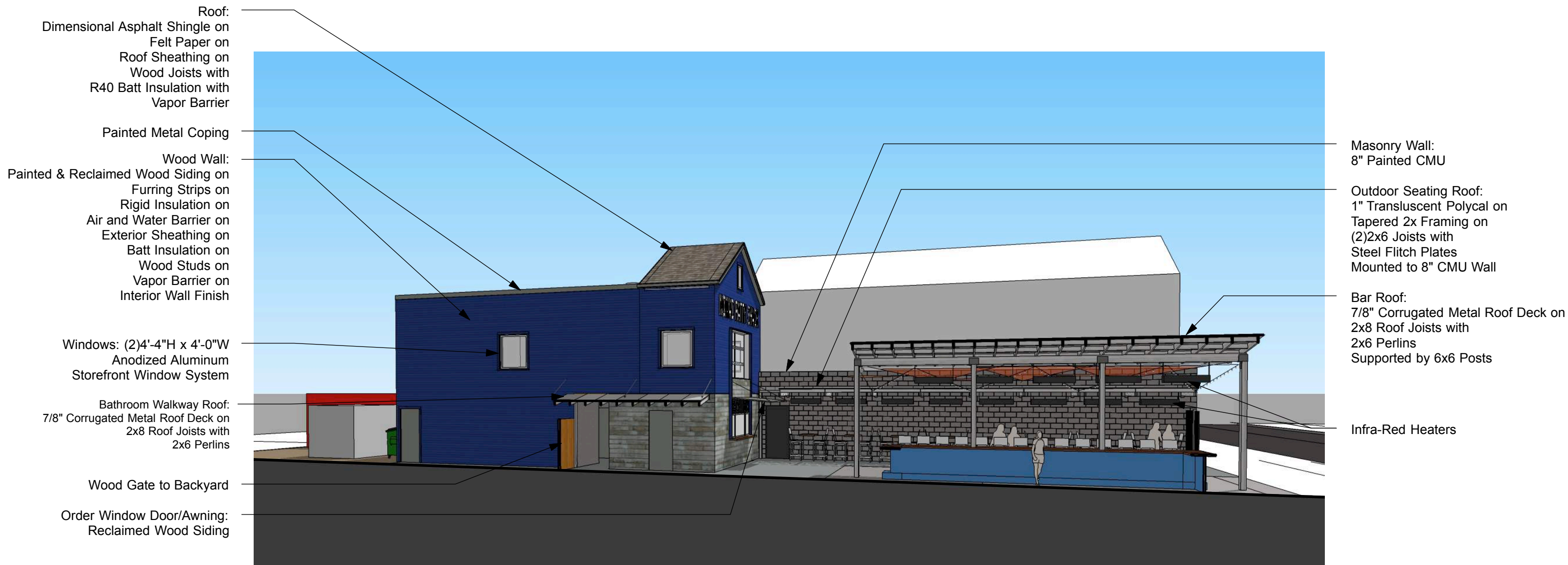
Masonry Wall:
8" Painted CMU

Walkway:
Concrete Slab on
Compacted Sub Base,
Ramp Slope = 1:20

Metal Picket Gate

Seasonal Outdoor Seating:
Concrete Slab on
Compacted Sub Base

1 **WEST ELEVATION**
A2.4 Scale: NTS



1 **NORTH ELEVATION**
A2.5 Scale: NTS



WARREN AVE.



BRADY STREET



THE KUBALA WASHATKO
ARCHITECTS, INC.
W61 N617 Mequon Avenue
Cedarburg, WI 53012
262-377-6039

NOMAD - Biergarten
1672 N Warren Ave.
Milwaukee, WI 53202

Historic
Preservation
Commission

DATE:
10.18.2016
PROJECT NO:
213716

A3.1