


BIRD

Affordable, sustainable
transportation for cities



An aerial photograph of a city, likely Los Angeles, showing a complex multi-level highway interchange. The roads are filled with cars, indicating heavy traffic. The surrounding urban landscape is visible, with buildings and greenery. The image is darkened to make the white text stand out.

**In cities around the world,
urban congestion is reaching
a breaking point.**



We have an unprecedented opportunity and responsibility to reduce car trips.

40%

Car Trips Under 2 Miles

Imagine a world with fewer cars.





BOVAG



01-LX-RP



WU18 XSJ



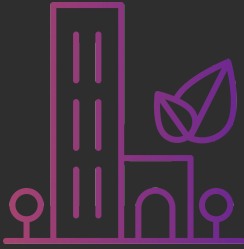
BOVAG
Bicycle
Association

Bird is a last-mile electric vehicles sharing company dedicated to bringing affordable, environmentally friendly transportation solutions to cities.

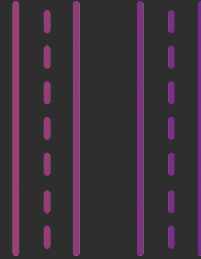


A person is riding a kick scooter on a city street. The background is a blurred scene of a busy urban area with many pedestrians and buildings. The entire image has a purple tint. Overlaid on the image is white text.

Bird wants to partner with cities on an affordable shared transportation service that reduces short car trips.



**Greener,
Quieter Cities**



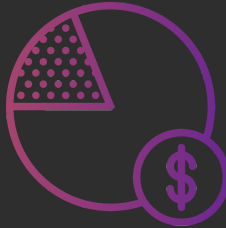
**Safer, Less
Congested Roads**



**Solutions for
Underserved Areas**



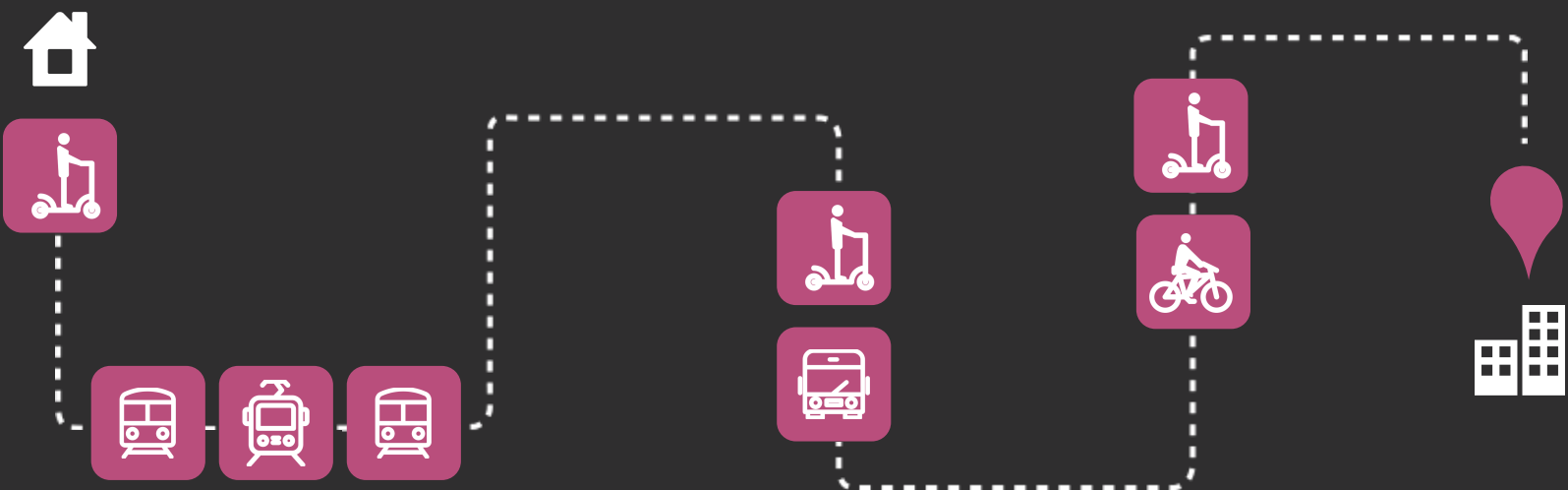
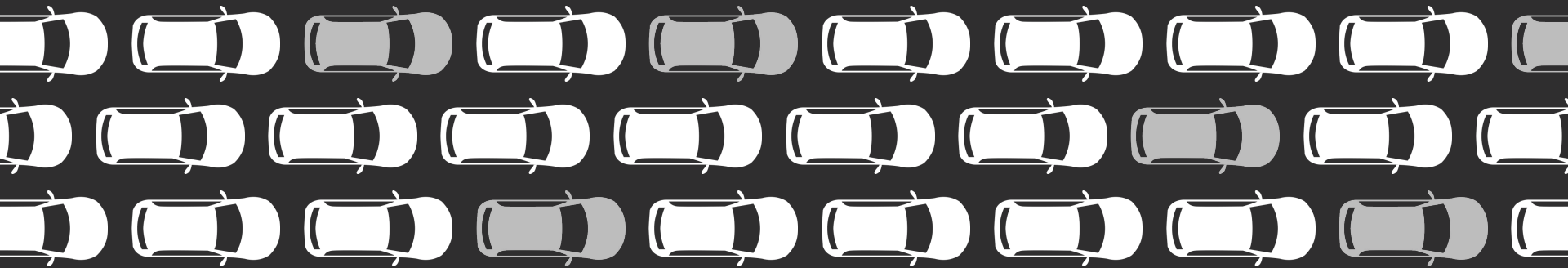
**Investment
in Infrastructure**



**Lower Costs to
Cities & Individuals**



**Better Utilized
Shared Transportation**



le coq sportif

L'ATELIER DU COQ

SMILE
C'EST
DU
SPORT

1 car = 15 birds

BIRD

Le Coq brings a unique piece of the traditional
industry to our London Concept Store
Customised le coq sportif, our unique
traditional Rockinckineckinck





Our Birds clean up after themselves

We retrieve all vehicles from city streets every night. We inspect, maintain and repair vehicles before the next day.



Our Bird population grows responsibly

We will not increase the number of vehicles unless they are being used at least three times per day. Utilization data will be shared with the city on a regular bases.



Our Birds build relationships

We offer to remit \$1/vehicle/day to city governments to put toward bike lanes, safe riding programs, and shared infrastructure.



Commitment to safety

Always wear a helmet

15 mph max speed

Must be 18+

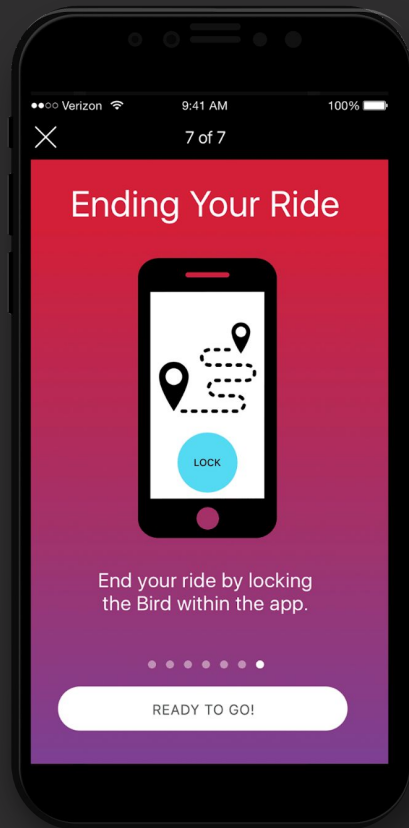
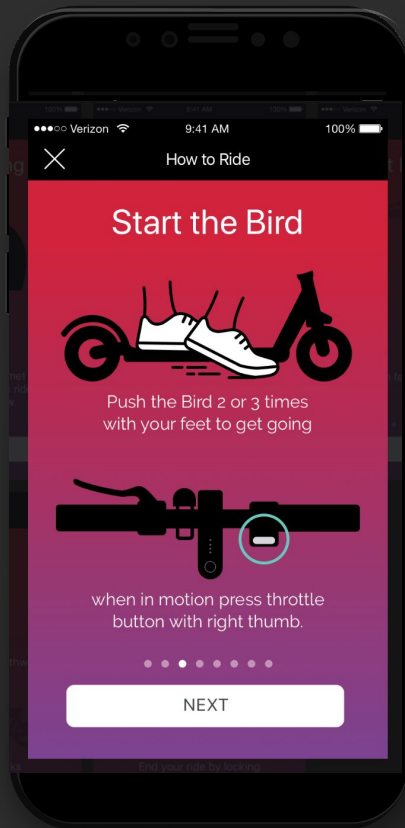
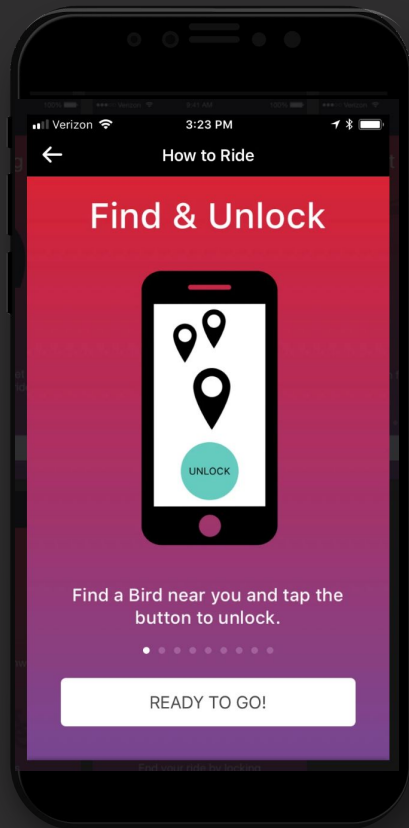
One rider per Bird

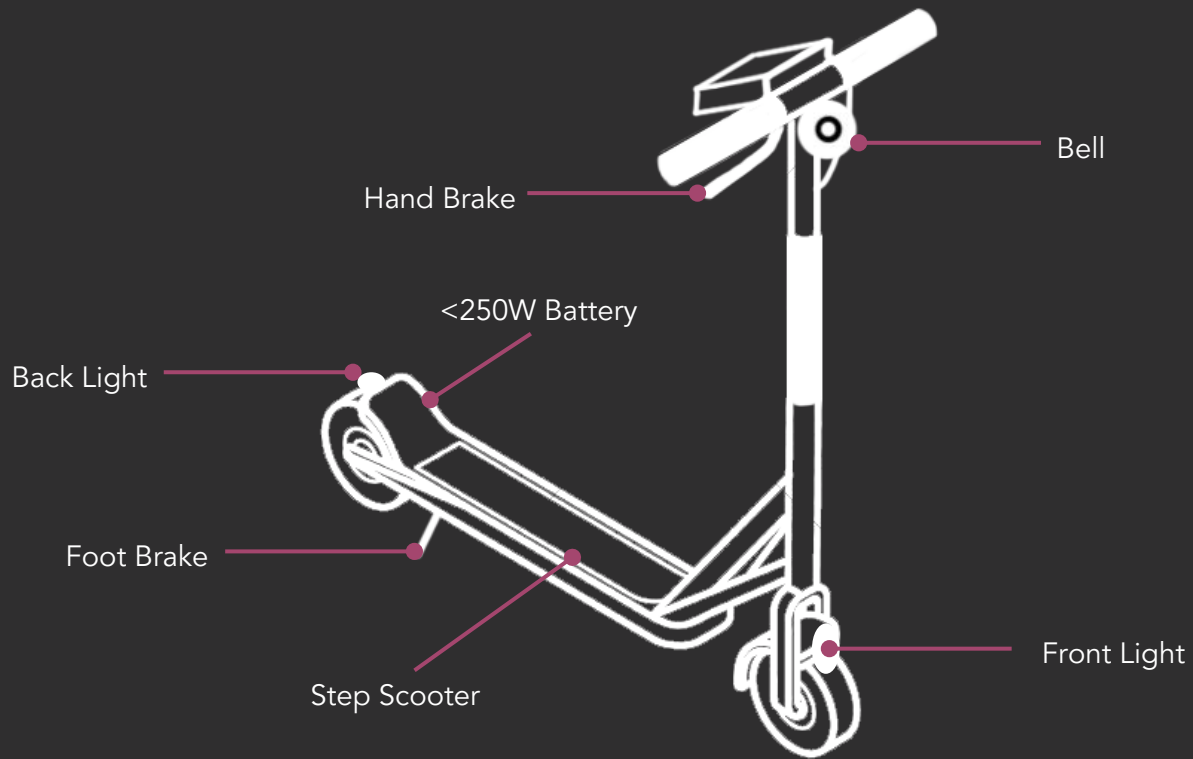
Always obey traffic laws

Park your Bird respectfully

No riding on sidewalks









Thank You