

MILWAUKEE  
HISTORIC  
PRESERVATION  
COMMISSION

LIVING WITH HISTORY

## Certificate of Appropriateness

Milwaukee Historic Preservation Commission/200 E. Wells Street/Milwaukee, WI 53202/phone 414-286-5712/fax 414-286-3004

**Property** 930 W. HISTORIC MITCHELL ST. Mitchell Street Historic District  
**Description of work** Applicant to install 6 HVAC units on the roof of 930 West Historic Mitchell Street, the former Goldman's Building, now a clinic.  
**Date issued** 9/29/2015 PTS ID 106054 COA

In accordance with the provisions of Section 320-21 (11) and (12) of the Milwaukee Code of Ordinances, the Milwaukee Historic Preservation Commission has issued a certificate of appropriateness for the work listed above. The work was found to be consistent with preservation guidelines. The following conditions apply to this certificate of appropriateness:

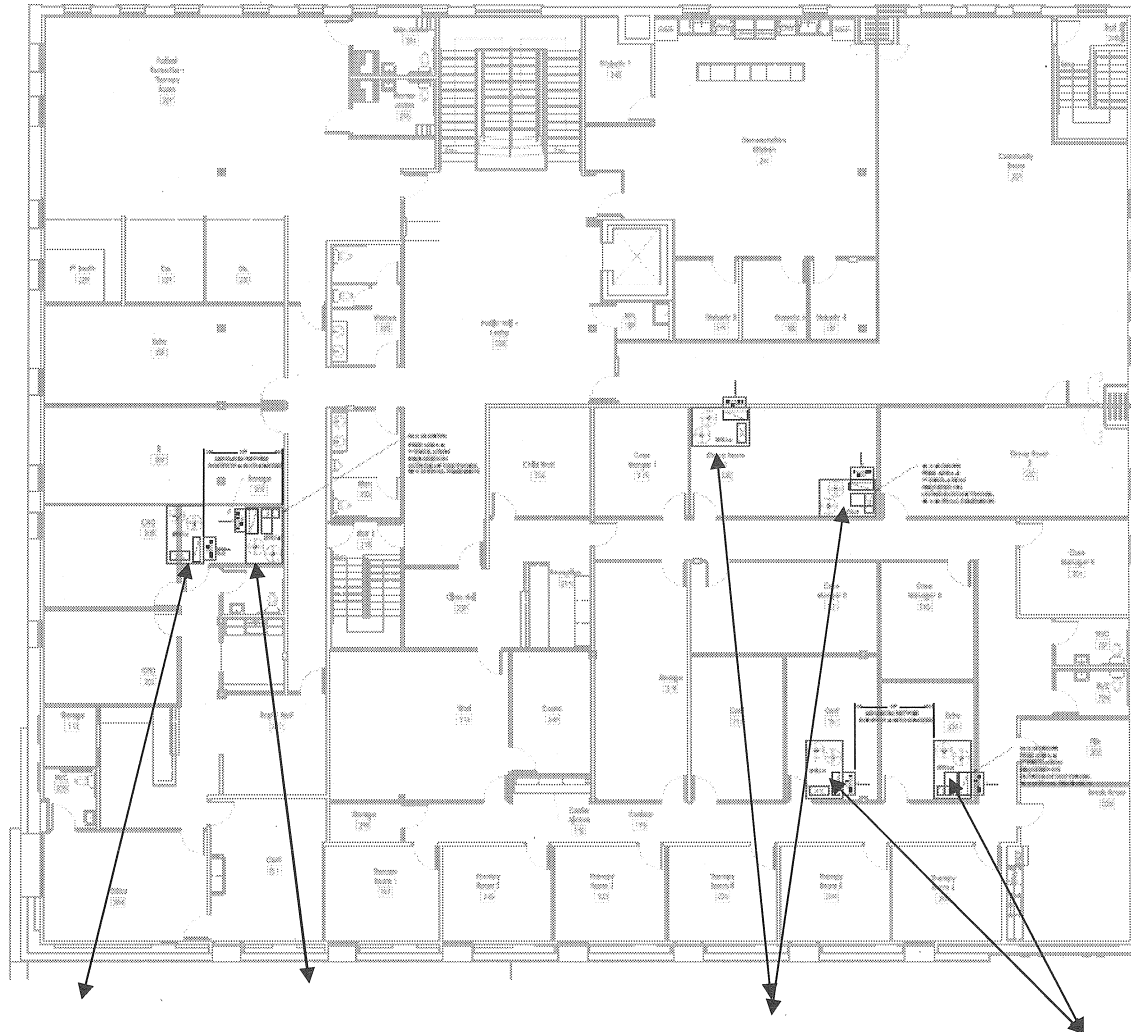
The units will be installed as indicated on the plans and drawings.

All work must be done in a craftsman-like manner, and must be completed within one year of the date this certificate was issued. Staff must approve any changes or additions to this certificate before work begins. Work that is not completed in accordance with this certificate may be subject to correction orders or citations. If you require technical assistance, please contact Carlen Hatala of the Historic Preservation staff as follows: Phone: (414) 286-5722 Fax: (414) 286-3004 E-mail: [chatal@milwaukee.gov](mailto:chatal@milwaukee.gov).

If permits are required, you are responsible for obtaining them from the Milwaukee Development Center. If you have questions about permit requirements, please consult the Development Center's web site, [www.milwaukee.gov/build](http://www.milwaukee.gov/build), or call (414) 286-8210.

City of Milwaukee Historic Preservation Staff

Copies to: Development Center, Ald. Jose Perez, Contractor, Inspector Robert McInnes (286-2518)



**The HVAC units will be installed at the locations indicated but at the rooftop. They will not be visible or only minimally visible from the right of way.**

1. DIMENSIONS ARE IN INCHES. DIMENSIONS IN FT. & INCHES ARE SHOWN IN PARENTHESIS.
2. CENTER OF GRAVITY
3. CENTER OF MASS

UNIT	CATALOG CODE	W
UNIT-01A	0100	17 1/2 (443)
UNIT-01B	0101	17 1/2 (443)

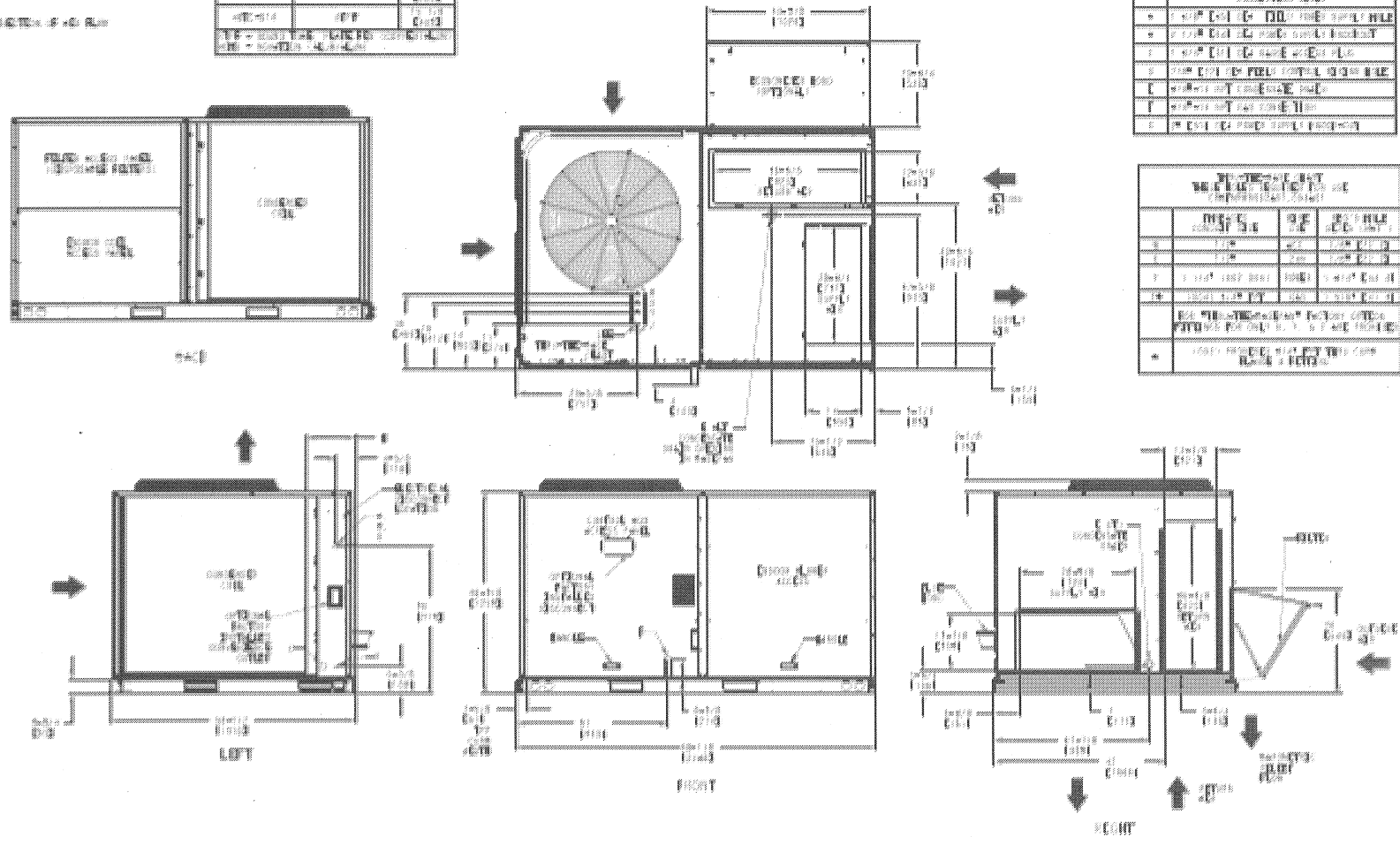
UNIT-01A AND UNIT-01B ARE IDENTICAL UNLESS NOTED OTHERWISE.

**UNIT-01A AND UNIT-01B** ARE IDENTICAL UNLESS NOTED OTHERWISE.

DIMENSIONS (IN)	
1	17 1/2 (443)
2	17 1/2 (443)
3	17 1/2 (443)
4	17 1/2 (443)
5	17 1/2 (443)
6	17 1/2 (443)
7	17 1/2 (443)
8	17 1/2 (443)

UNIT-01A AND UNIT-01B ARE IDENTICAL UNLESS NOTED OTHERWISE.			
UNIT	W	H	D
01A	17 1/2 (443)	17 1/2 (443)	17 1/2 (443)
01B	17 1/2 (443)	17 1/2 (443)	17 1/2 (443)
01C	17 1/2 (443)	17 1/2 (443)	17 1/2 (443)
01D	17 1/2 (443)	17 1/2 (443)	17 1/2 (443)

FOR UNIT-01A AND UNIT-01B, THE CENTER OF GRAVITY IS AT THE CENTER OF THE UNIT.



**The units that will be installed**