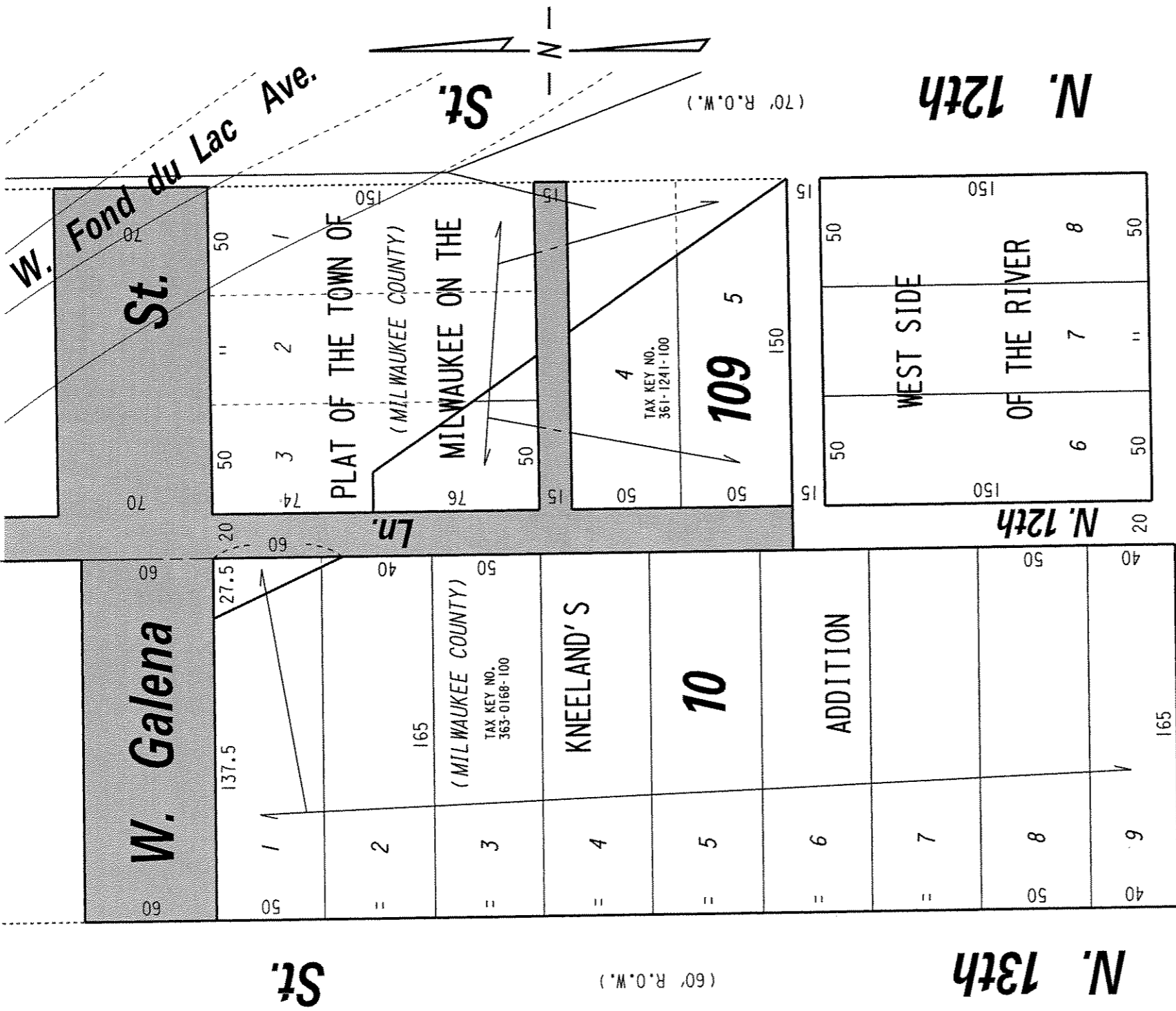


S.E. 1/4 SEC. 19, T.7N., R.22E.

363

S.W. 1/4 SEC. 20, T.7N., R.22E.

362



W. Cherry

(60' R.O.W.)

SEC. LINE

St.

(70' R.O.W.)

( MAP 1 OF 2 )

EXHIBIT "A"

 PORTIONS OF PUBLIC STREETS AND ALLEYS PROPOSED TO BE VACATED

FILE NO. 060692  
 INFRASTRUCTURE SERVICES DIVISION  
 MILWAUKEE, WISCONSIN

ASSIGNED TO: P.A. VELLA  
 CH'K'D. BY: W.E. FUCHS  
 DRAWN BY: P.A.V.  
 DATE: OCT. 25, 2006  
 PROJECT/GRANT NO.: WK52337237  
 SCALE: 1" = 60'  
 APPROVED BY:

*Marcia Lindholm*  
 CENTRAL DRAFTING & RECORDS MANAGER  
*W. E. Fuchs*  
 CITY ENGINEER

S.E. 1/4 SEC. 19, T.7N., R.22E.

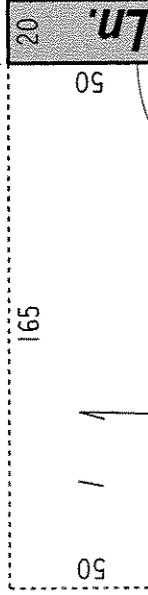
363

362 S.W. 1/4 SEC. 20, T.7N., R.22E.

W. Walnut

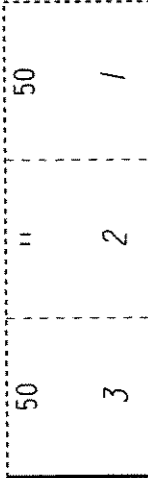
St.

(R.O.W. VARIES)



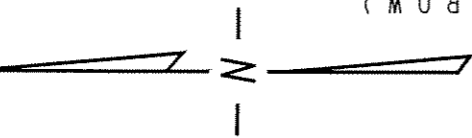
St.

Ln.



St.

PLAT OF THE TOWN OF MILWAUKEE ON THE



(60' R.O.W.)

TAX KEY NO. 361-0985-100

95

(70' R.O.W.)

KNEELAND'S

9 W. Fond du Lac Ave.

ADDITION

WEST SIDE

N. 13th

N. 12th

OF THE RIVER

N. 12th

TAX KEY NO. 363-0150-100 (MILWAUKEE COUNTY)

165

W. Galena

SEC. LINE

St.

( MAP 2 OF 2 )


 PORTIONS OF PUBLIC STREETS AND ALLEYS PROPOSED TO BE VACATED

EXHIBIT "A"  
FILE NO. 060692

INFRASTRUCTURE SERVICES DIVISION

MILWAUKEE, WISCONSIN

ASSIGNED TO: P.A. VELLA

CH'K'D. BY: W.E. FUCHS

DRAWN BY: P.A.V.

DATE: OCT. 25, 2006

PROJECT/GRANT NO.: WK52337237

SCALE: 1" = 60'

APPROVED BY:

*maria Lindorfer*  
CENTRAL DRAFTING & RECORDS MANAGER

*W. E. Fuchs*  
CITY ENGINEER