

Work Order Period Overview

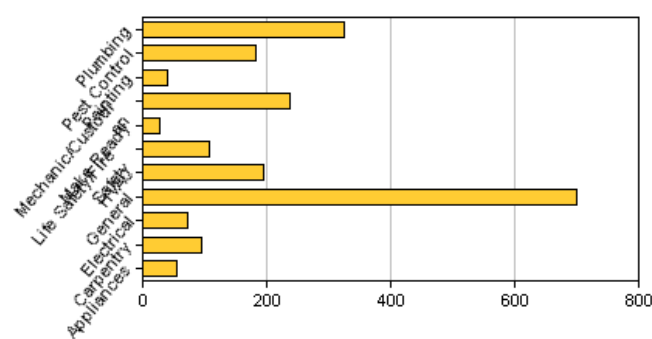
Property : Public Housing Developments (.phdev)
Period Date From: 04/01/2024
Period Date To: 04/30/2024
Approval Status :
Type : Work Order

Period Activity					
Balance Forward	1,491				
Created	2,197				
Closed	2,154				
Balance End	1534				
Average Per Day					
Created	73.23				
Closed	71.80				
Open	19.47				
Completed Activity by Category					
Category	Total Count	Minimum Days	Maximum Days	Average Days	%
Appliances	54	0	36	2	3
Carpentry	96	0	286	26	5
Electrical	72	0	267	13	4
General	701	0	387	17	34
HVAC	194	0	281	2	10
Life Safety/Fire Safety	108	0	49	10	5
Make Ready	28	0	279	24	1
Mechanic/Custodian	237	0	325	5	12
Painting	39	0	207	17	2
Pest Control	182	0	91	9	9
Plumbing	325	0	181	4	16
Total	2,036				
Completed Activity by Priority					
Priority	Total Count	Minimum Days	Maximum Days	Average Days	%
Annual Inspections	156	0	387	26	8
Emergency	195	0	47	2	10
High	94	0	207	7	5
Inspection	36	0	22	5	2
Low	12	0	27	5	1
Medium	70	0	281	16	3
NSPIRE Life-Threatening	36	0	25	3	2
NSPIRE Low	35	0	13	2	2
NSPIRE Moderate	46	0	70	5	2
NSPIRE Severe	10	0	42	9	0
Preventative	13	2	86	25	1
Routine	1,054	0	325	10	52
Urgent	22	0	46	4	1
Vacancy Prep	257	0	309	17	13
Total	2,036				

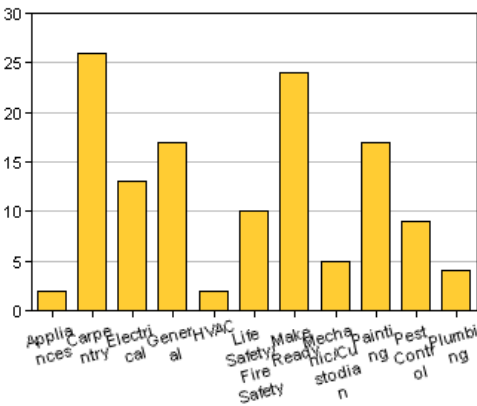
Work Order Period Overview

Property : Public Housing Developments (.phdev)
Period Date From: 04/01/2024
Period Date To: 04/30/2024
Approval Status :
Type : Work Order

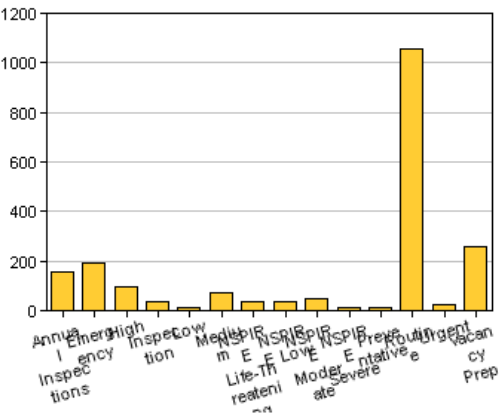
Completed (Count) by Category



Completed (Avg. Days) by Category



Completed (Count) by Priority



Completed (Avg. Days) by Priority

