

MARINE TERMINAL BUILDING - 106 BROADWAY - CITY ENCROACHMENTS

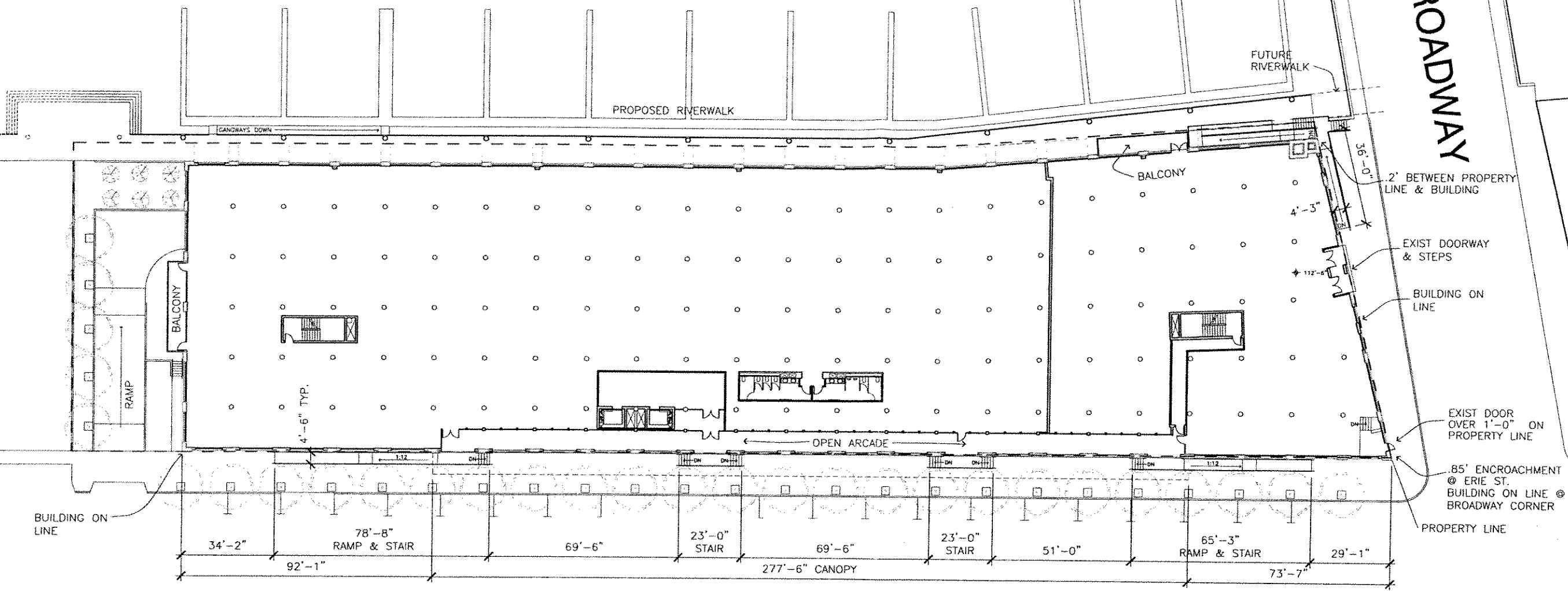


COMM. NO.	2588-001-00
SCALE	1/8" = 1'-0"
DATE	2/26/04
DRAWN	HCA

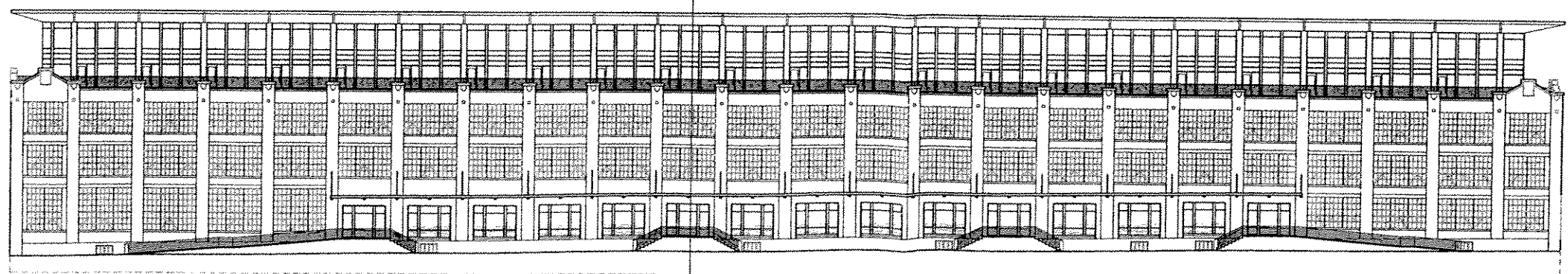
HA.
 Architecture | Engineering | Planning
 Hammel, Green and Abrahamson, Inc.
 135 West Wells Street - Suite 800
 Milwaukee, Wisconsin USA 53203-6439
 Telephone 414.278.8200 Facsimile 414.278.7734

MILWAUKEE RIVER

BROADWAY



ERIE STREET



1 NORTH ELEVATION
NTS

**MARINE
TERMINAL
LOFTS**

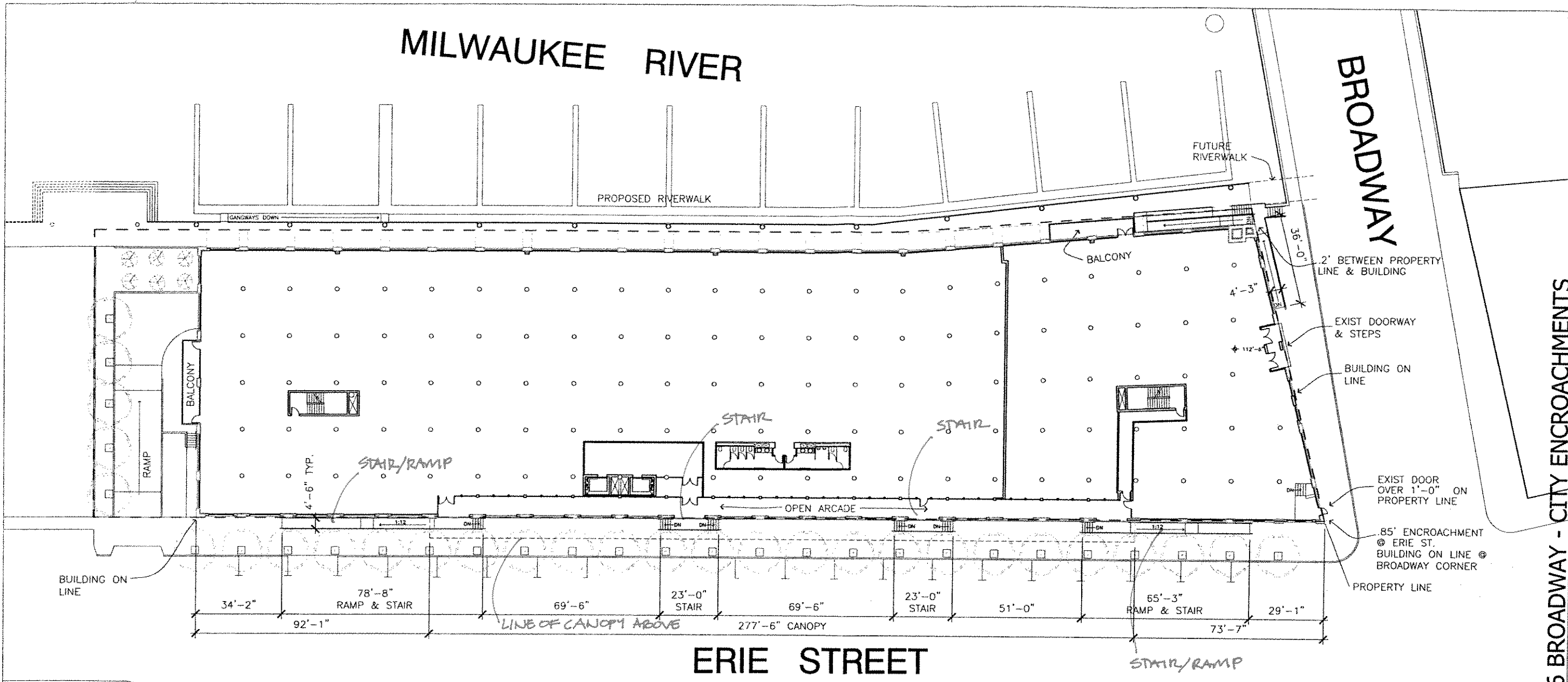
MARINE TERMINAL BUILDING - 106 BROADWAY - CITY ENCROACHMENTS

COMM. NO.	2588-001-00
SCALE	NTS
DATE	2/26/04
DRAWN	HGA

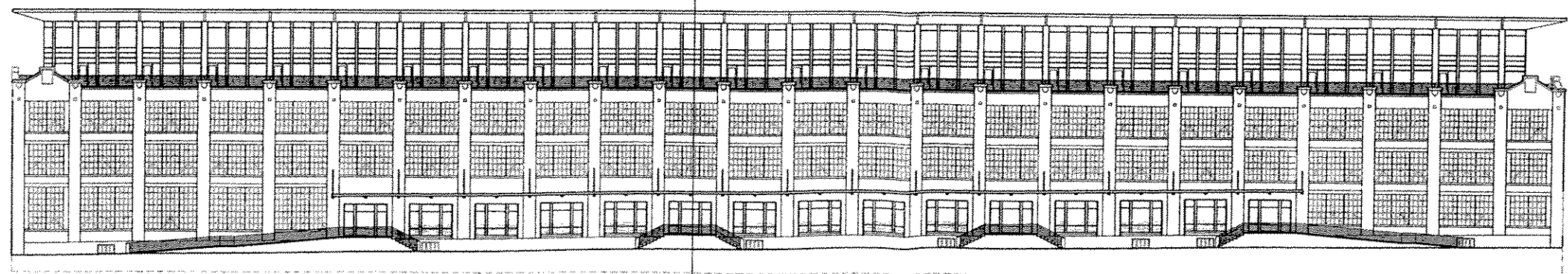
HGA
 Architecture | Engineering | Planning
 Hammel, Green and Abrahamson, Inc.
 135 West Wells Street - Suite 800
 Milwaukee, Wisconsin USA 53203-6439
 Telephone 414.378.8200 Facsimile 414.278.7734

MILWAUKEE RIVER

BROADWAY



ERIE STREET



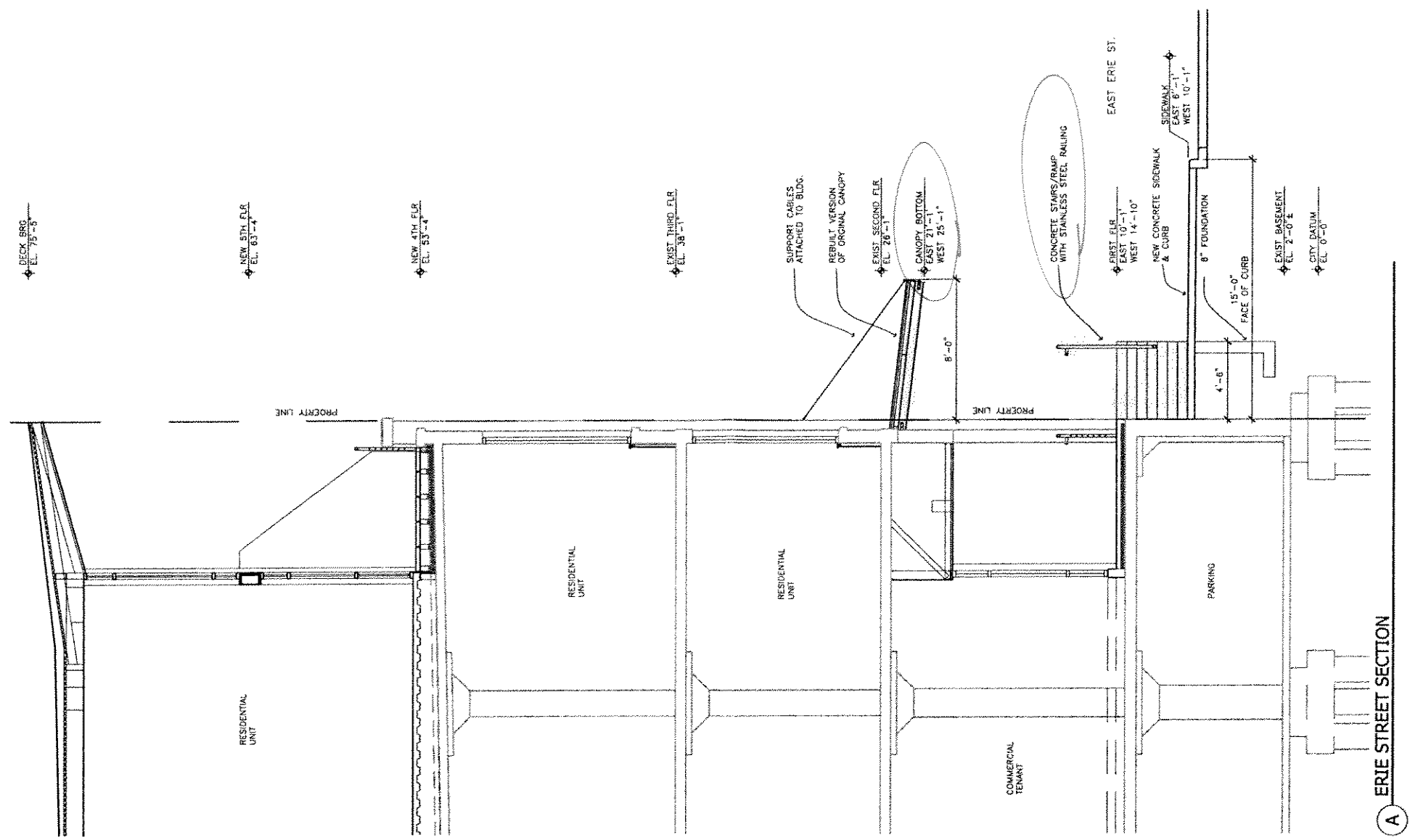
1 NORTH ELEVATION
NTS

**MARINE
TERMINAL
LOFTS**

MARINE TERMINAL BUILDING - 106 BROADWAY - CITY ENCROACHMENTS

COMM. NO.	2588-001-00
SCALE	NTS
DATE	2/26/04
DRAWN	HGA

hga.
 Architecture | Engineering | Planning
 Hammel, Green and Abrahamson, Inc.
 135 West Wells Street - Suite 800
 Milwaukee, Wisconsin USA 53203-6439
 Telephone 414.278.8200 Facsimile 414.278.7734



A ERIE STREET SECTION

MARINE TERMINAL BUILDING - 106 BROADWAY - CITY ENCROACHMENTS

HGA.
 Architecture | Engineering | Planning
 Hammel, Green and Abrahamson, Inc.
 135 West Wells Street - Suite 800
 Milwaukee, Wisconsin USA 53203-6439
 Telephone: 414.278.9200 Facsimile: 414.278.7734

COMM. NO.	2588-001-00
SCALE	1/8" = 1'-0"
DATE	2/26/04
DRAWN	HGA

