

City of Milwaukee

Department of Administration-
Community Development Grants
Administration

Community and Economic Development
Committee

May 17, 2017

File# 170135 HOME Investment Partnerships

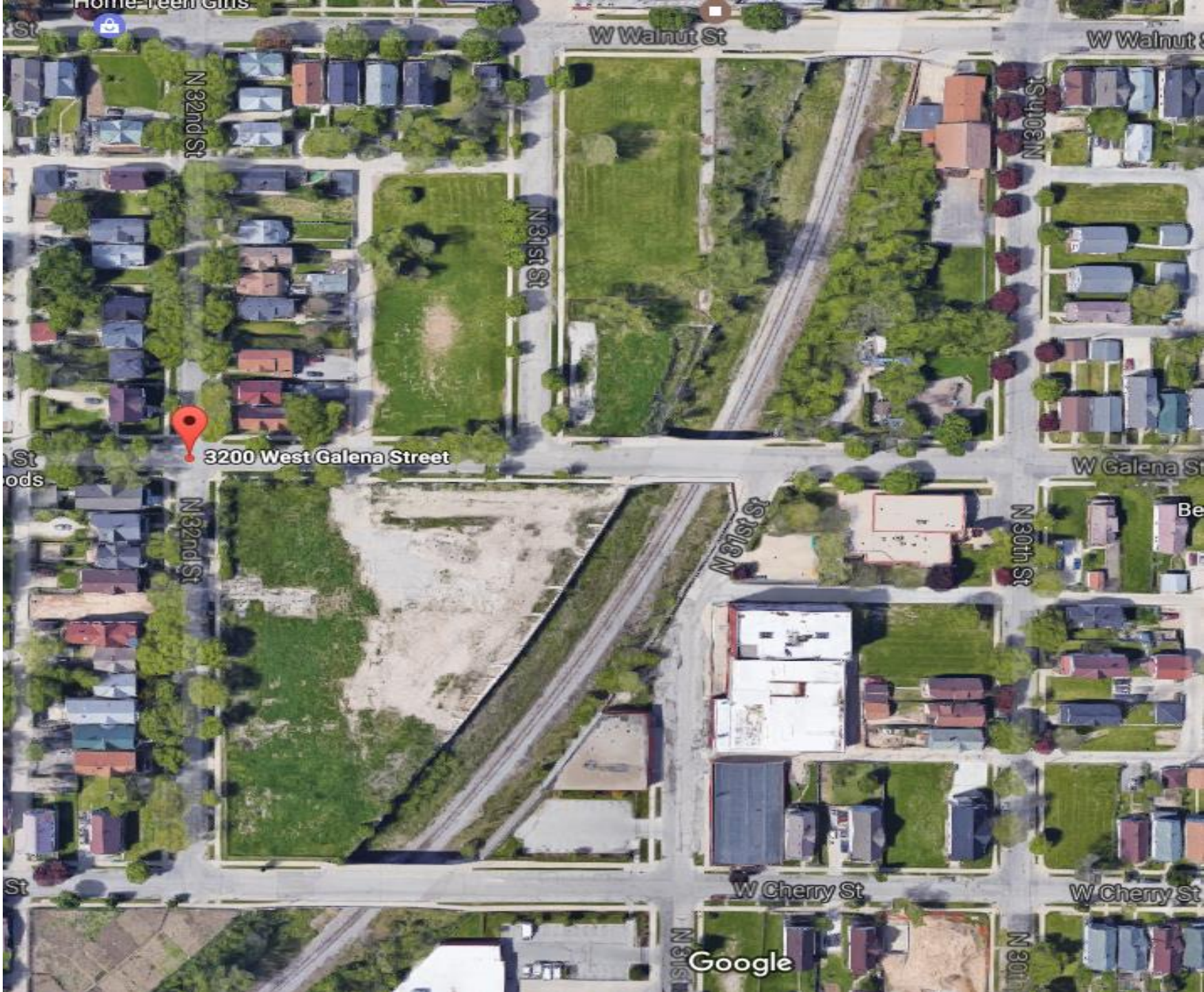


Washington Park Townhomes

3100-3200 W. Galena/Cherry Street

Department of City Development/ Gorman & Company

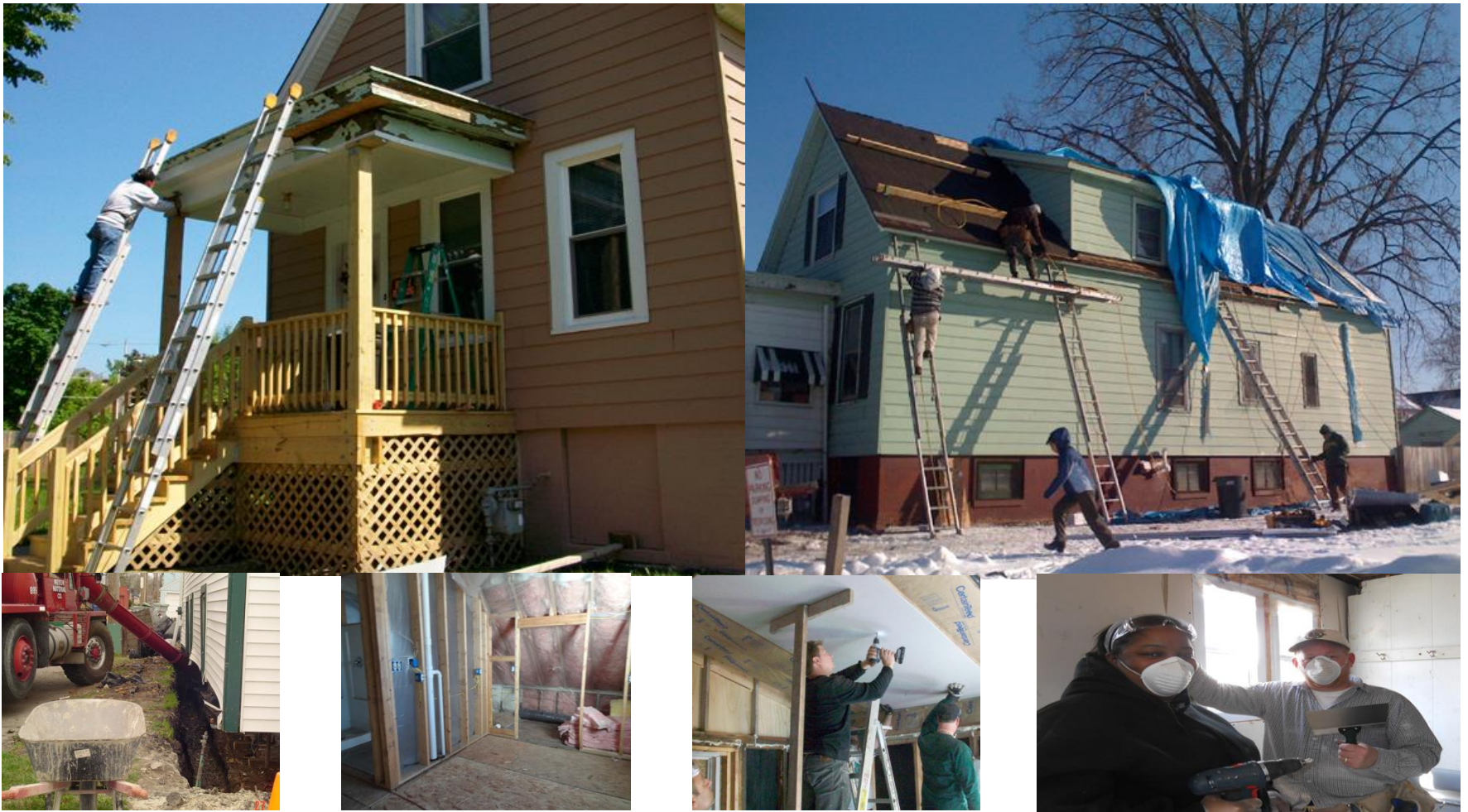




3200 West Galena Street

Google

Dominican Center Neighborhood Improvement Program (NIP)

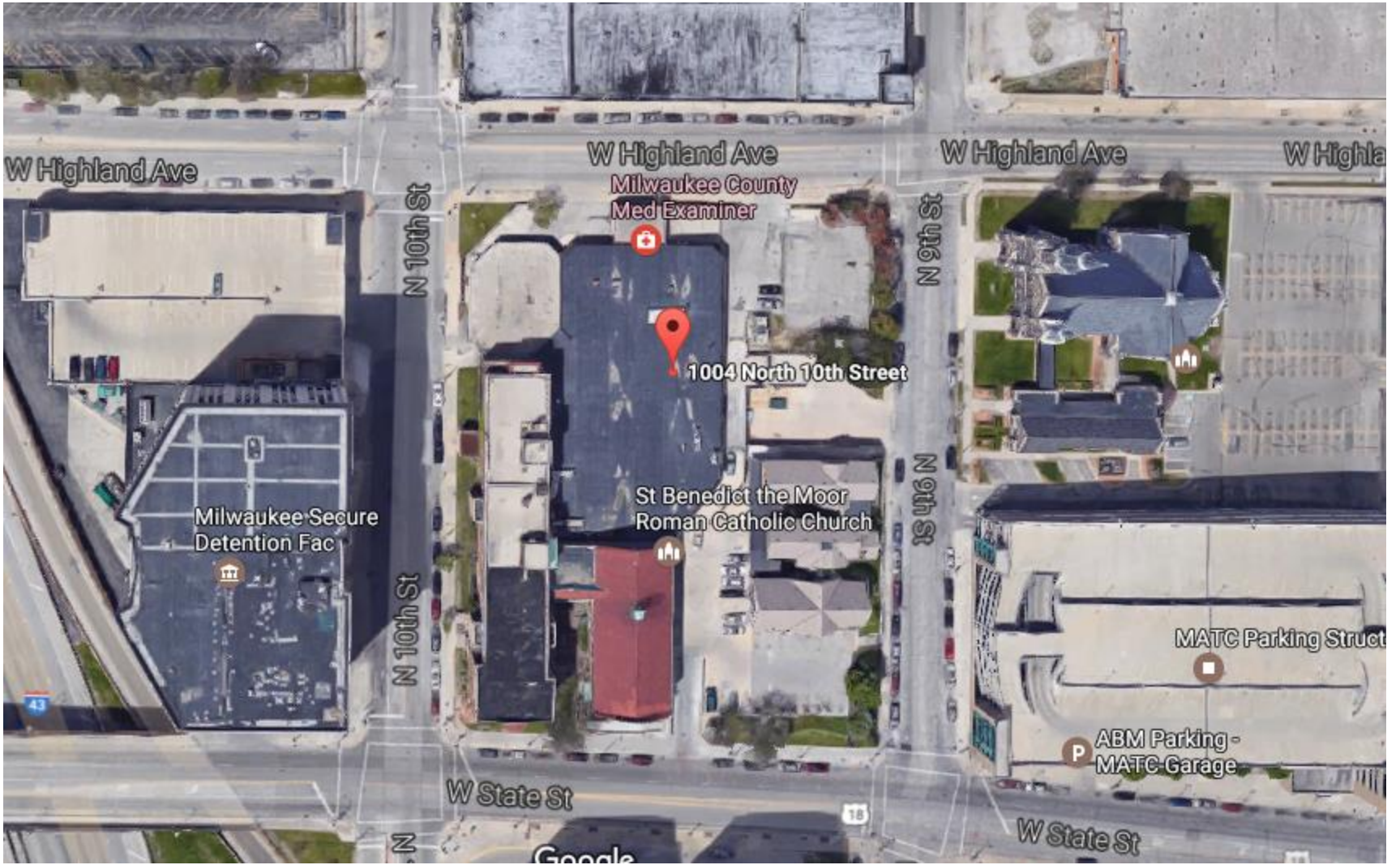


St. Anthony's Apartments

1004 N. 10th Street
Heartland Alliance Housing



St. Anthony's Apartments at 1004 N. 10th Street Milwaukee, Wisconsin

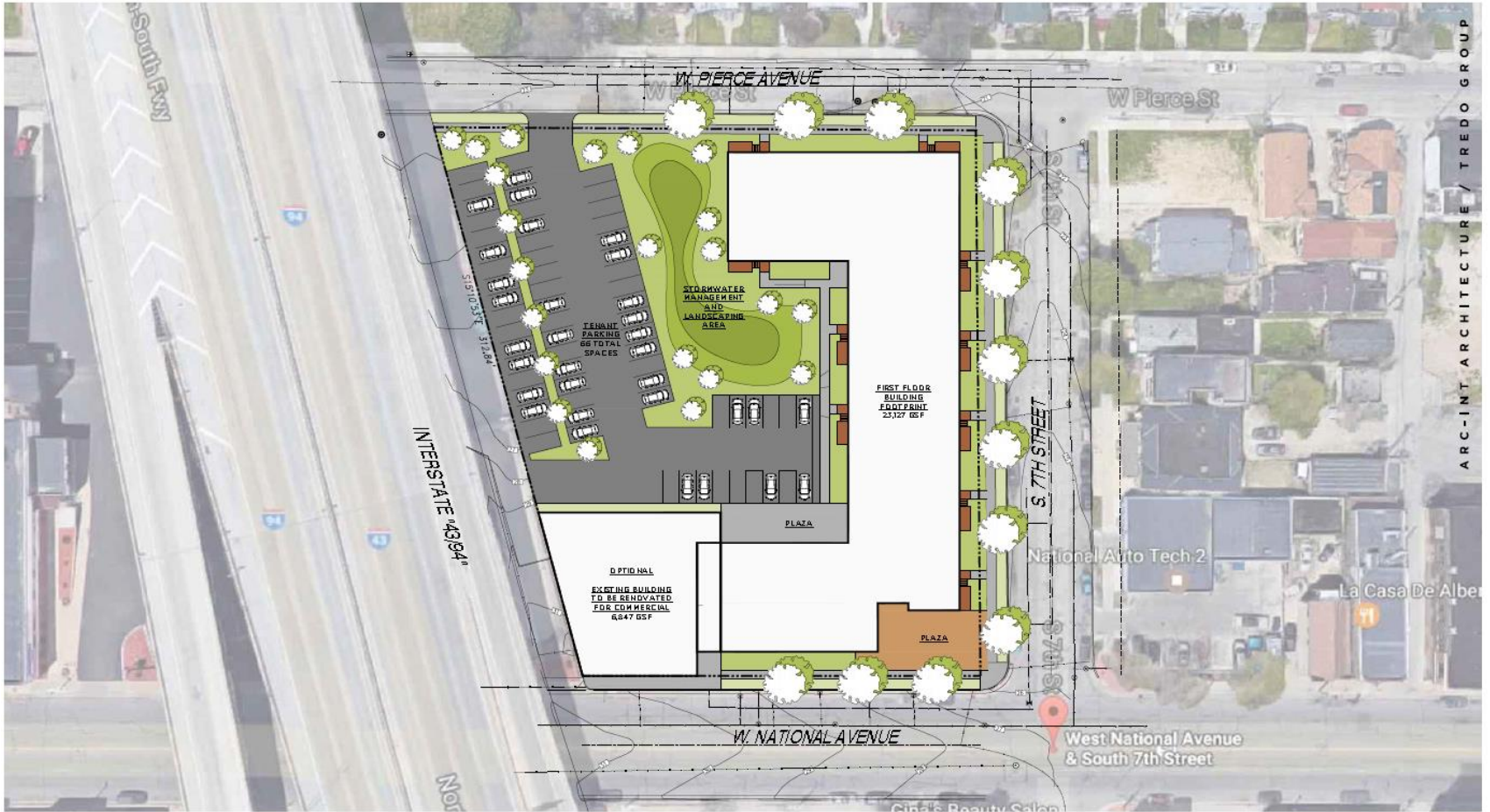


Seven04 Place

704 West National Avenue.

Impact Seven





ARC-INT ARCHITECTURE / TREDG GROUP



CONCEPTUAL DESIGN PRESENTATION
MAY 08, 2017

IMPACT SEVEN AND RULE DEVELOPMENT
SEVEN04 PLACE
7TH AND NATIONAL AVENUE
MILWAUKEE, WI

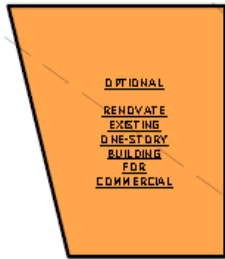
OPTION 3 - SITE PLAN
SCALE NOT TO SCALE
SHEET A1



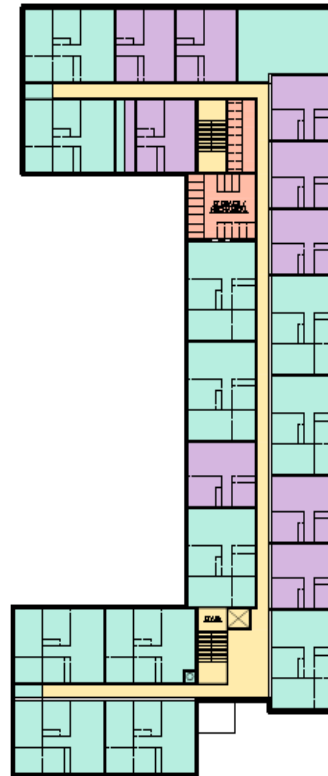
UNIT COUNT

ONE BEDROOM	19 UNITS
TWO BEDROOM	27 UNITS
THREE BEDROOM	12 UNITS
TOTAL	58 UNITS

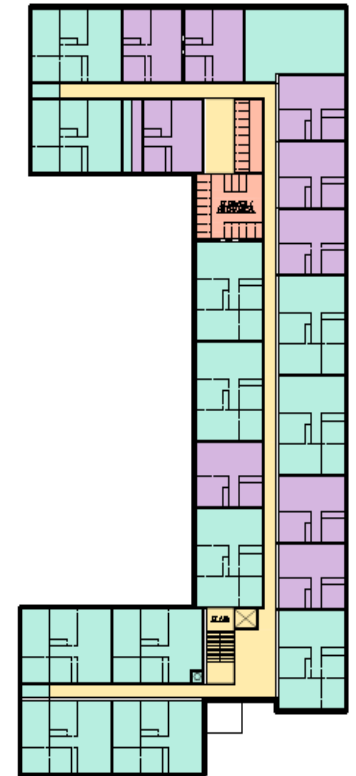
ENLARGED VIEW



GROUND FLOOR PLAN
23,127 GSF



SECOND FLOOR PLAN
23,127 GSF



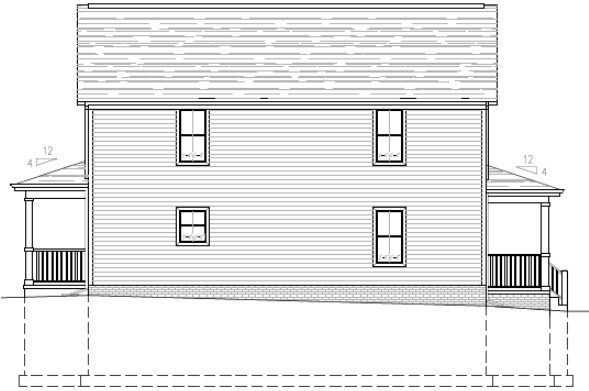
THIRD FLOOR PLAN
23,127 GSF



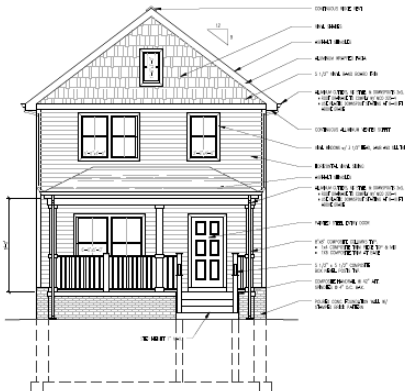
Jackie Robinson Homes

3900-3700 W. Concordia

Legacy Redevelopment Corp.



3 SIDE ELEVATION - 4 BEDROOM
ASB 1/8" = 1'-0"



1 FRONT ELEVATION - 4 BEDROOM
ASB 1/8" = 1'-0"



4 SIDE ELEVATION - 4 BEDROOM
ASB 1/8" = 1'-0"



2 REAR ELEVATION - 4 BEDROOM
ASB 1/8" = 1'-0"



W Concordia Ave

W Concordia Ave

Robinson Middle School

W Fond-du-Lac Ave

N 37th St

N 36th St

N 38th St

Welford Sanders Lofts

2821 N. 4th Street
Martin Luther King Economic Corp





W Locust St

N 5th St

N 5th St

N 4th St

N 4th St

Fast & Friendly Grocery

Boost Mobile Store
by Mobile To Go LLC...

2821 North 4th Street

Milwaukee
Enterprise Center

Four Seasons Early
Learning center

W Hadley St

W Hadley St

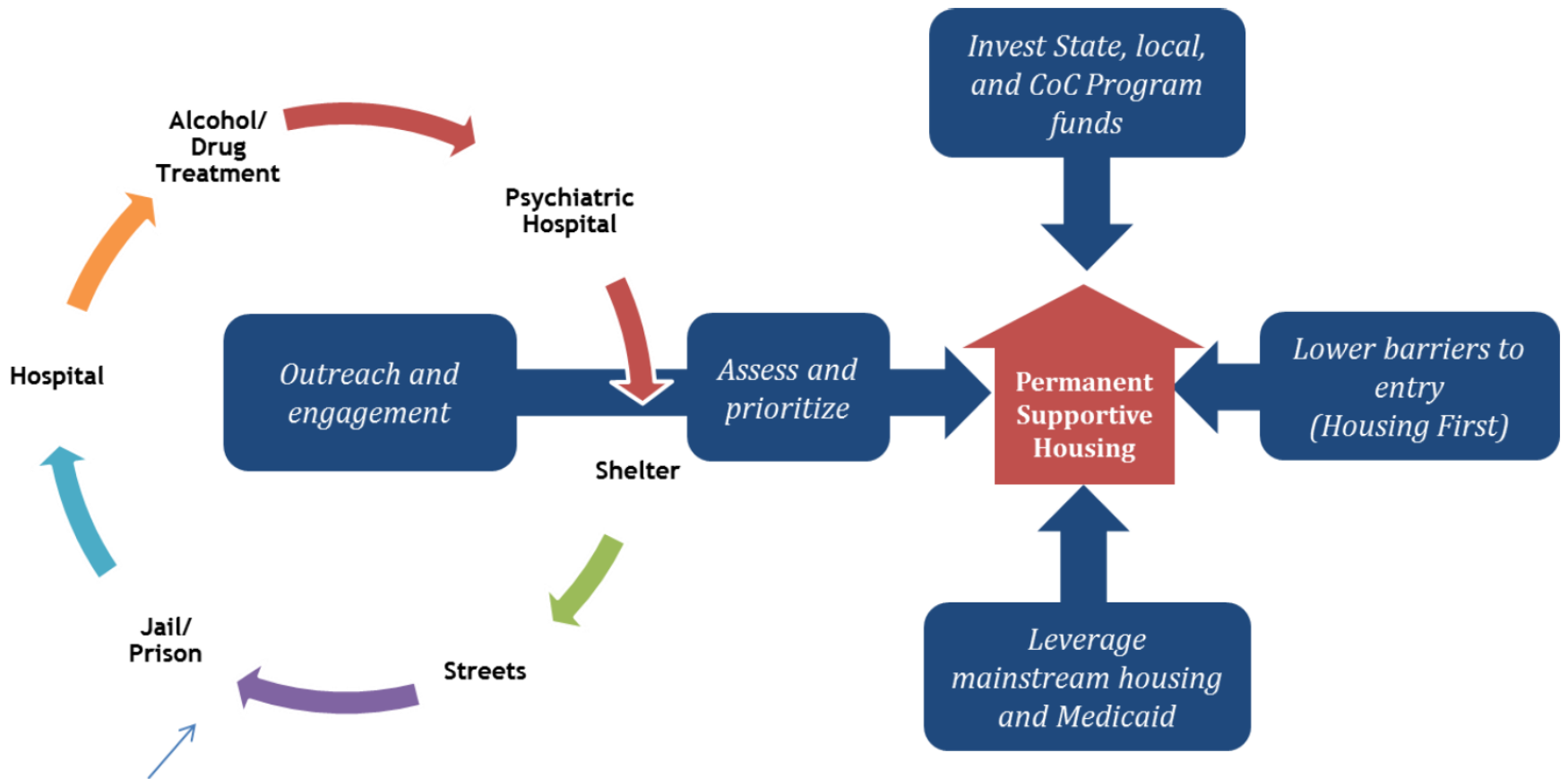


*Housing First Initiative:
A partnership between Milwaukee County
and the City of Milwaukee*



Housing First: Immediate access to housing stabilization

- recovery oriented case management
- self-determination & individualized care
- supportive community integration
- local economic development
- better outcomes for housing & recovery
- saves taxpayer money
- reduces burden on shelters
- reduces burden on emergency services
- reduces burden on police & courts
- embraces human dignity & diversity
- respects independence & personal freedom
- advocates for justice in mental health services



The cycle of chronic homelessness