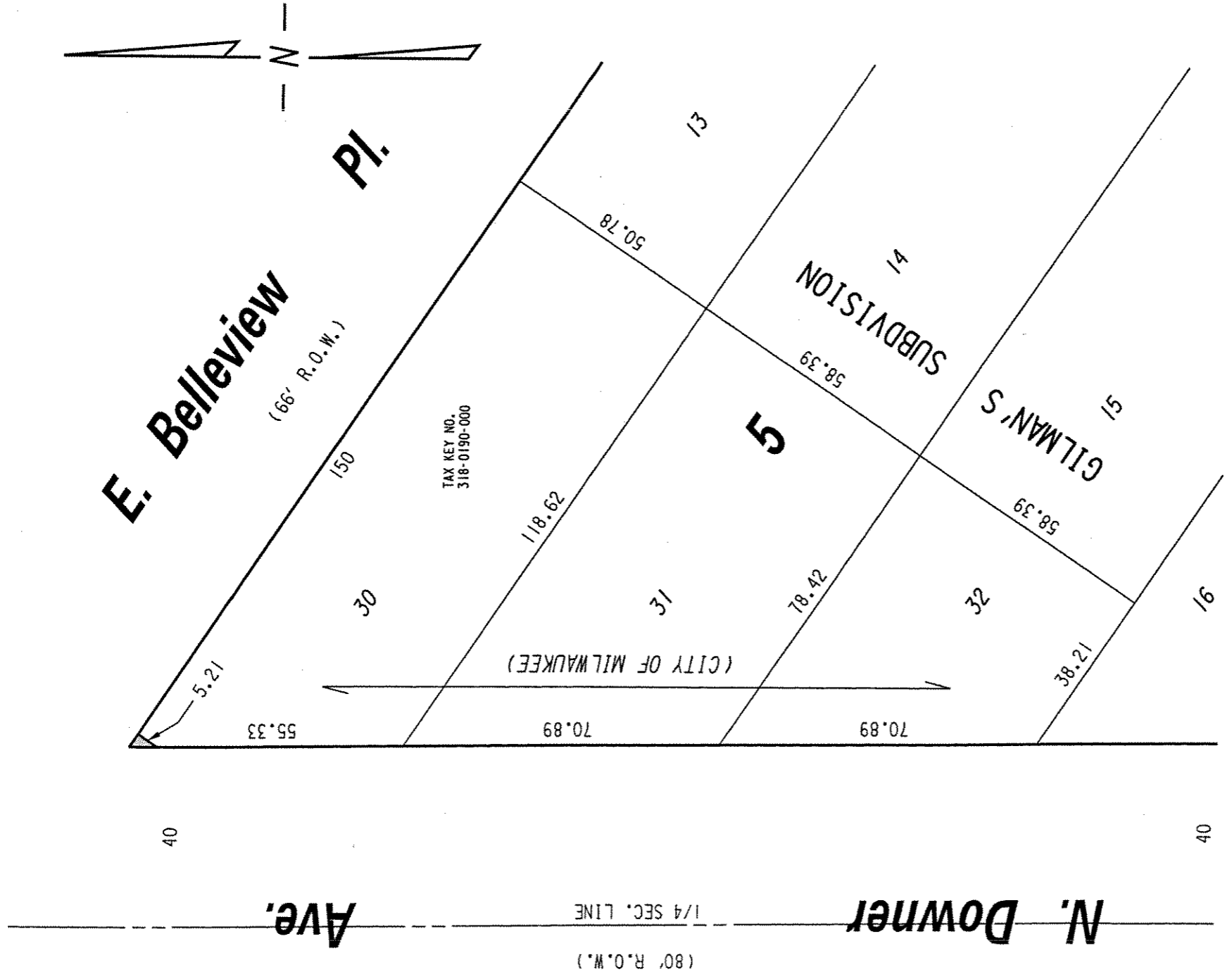


S.E. 1/4 SEC. 15, T.7N., R.22E.




 PORTION OF PUBLIC STREET PROPOSED TO BE VACATED

**EXHIBIT "A"**  
**FILE NO. 070687**

**INFRASTRUCTURE SERVICES DIVISION**  
 MILWAUKEE, WISCONSIN

ASSIGNED TO: W.E. FUCHS  
 DRAWN BY: W.E.F.  
 PROJECT/GRANT NO.: WK52337252  
 APPROVED BY:

CH'K'D. BY: W.E. FUCHS  
 DATE: OCT. 16, 2007  
 SCALE: 1" = 30'

*Marcia Lindholm*  
 CENTRAL DRAFTING & RECORDS MANAGER

*Jeffrey Palumbo*  
 PROFESSIONAL ENGINEER