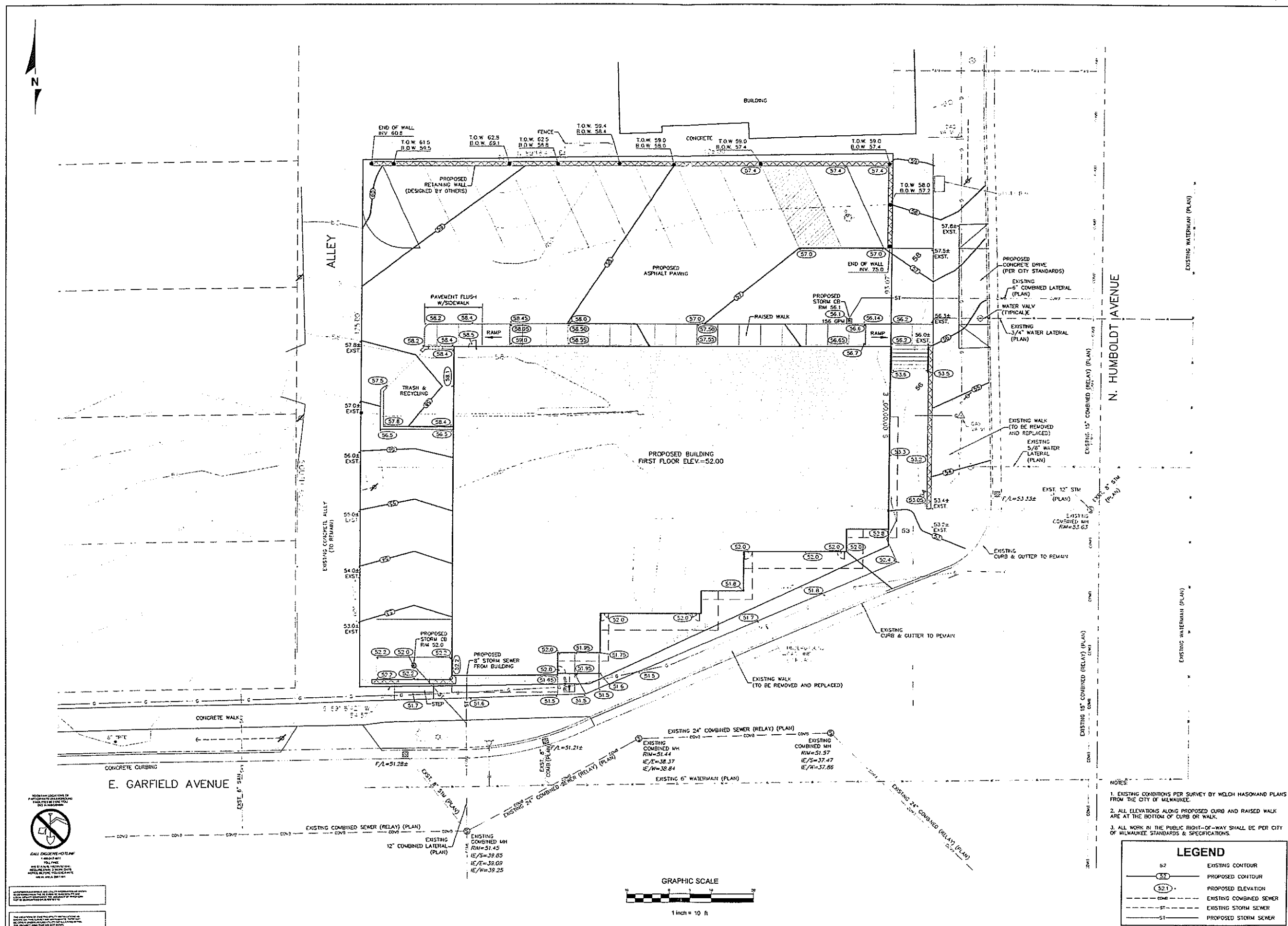


**SITE GRADING PLAN**  
**HUMBOLT RIDGE**  
 MILWAUKEE, WISCONSIN

DRAWN BY: V.L.G.  
 CHECKED BY: C.A.J.  
 DATE: 01/20/05  
 JOB NUMBER: C05001/RO

**C1.0**  
 HUMBOLT RIDGE  
 C05001  
 SHEET 1 OF 3



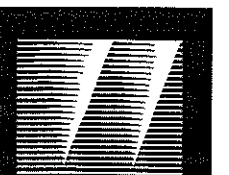
- NOTES:**
1. EXISTING CONDITIONS PER SURVEY BY WOLCH HASKAND PLANS FROM THE CITY OF MILWAUKEE.
  2. ALL ELEVATIONS ALONG PROPOSED CURB AND RAISED WALK ARE AT THE BOTTOM OF CURB OR WALK.
  3. ALL WORK IN THE PUBLIC RIGHT-OF-WAY SHALL BE PER CITY OF MILWAUKEE STANDARDS & SPECIFICATIONS.

**LEGEND**

57	EXISTING CONTOUR
52.1	PROPOSED CONTOUR
52.1	PROPOSED ELEVATION
CONV	EXISTING COMBINED SEWER
ST	EXISTING STORM SEWER
S1	PROPOSED STORM SEWER

**CALL OUTLINE**  
 1-800-441-1111  
 WWW.LIS-INC.COM

THIS DOCUMENT IS THE PROPERTY OF LAND INFORMATION SERVICES, INC. IT IS TO BE USED ONLY FOR THE PROJECT AND SITE SPECIFICALLY IDENTIFIED HEREIN. IT IS NOT TO BE REPRODUCED, COPIED, OR TRANSMITTED IN ANY FORM OR BY ANY MEANS, ELECTRONIC OR MECHANICAL, INCLUDING PHOTOCOPYING, RECORDING, OR BY ANY INFORMATION STORAGE AND RETRIEVAL SYSTEM, WITHOUT THE WRITTEN PERMISSION OF LAND INFORMATION SERVICES, INC.



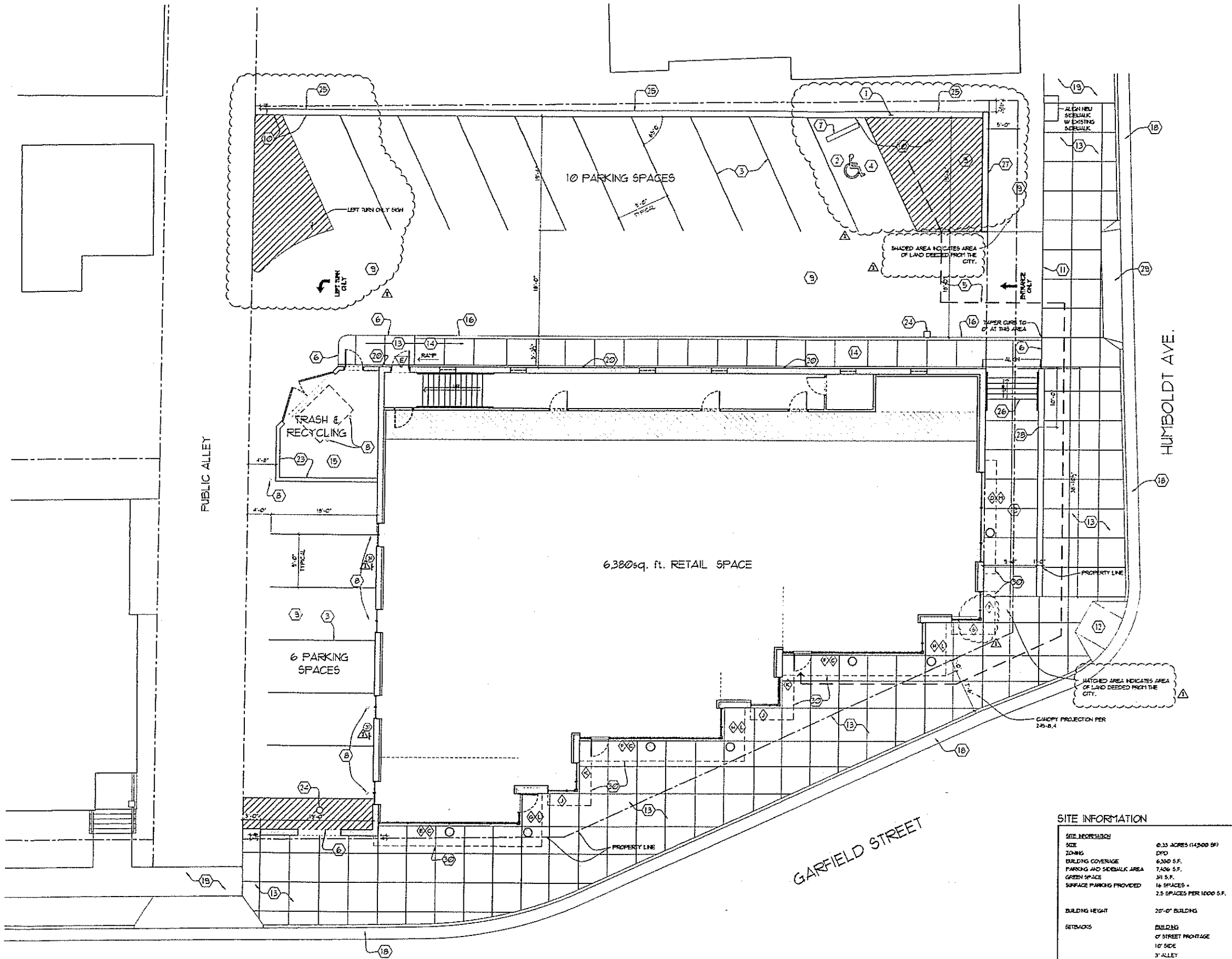
**WELMAN**  
ARCHITECTS  
INC.

21675 LONG VIEW DRIVE  
SUITE 500  
WAUKESHA, WISCONSIN 53186  
E-MAIL: WELMAN@WELMANARCH.COM  
PHONE (262) 798.7001

© COPYRIGHT BY WELMAN ARCHITECTS INC.

**HUMBOLDT RIDGE**

**HUMBOLDT AVE.  
& GARFIELD AVE.  
CITY OF MILWAUKEE**



**GENERAL NOTES:**

- ALL PAVING CURBS SHALL BE 4'-0" UNLESS NOTED OTHERWISE.
- PROVIDE CONCRETE SIDEWALKS AS INDICATED ON PLANS.
- GRADING AT ACCESSIBLE ROUTE TO COMPLY WITH CHAPTER II - ACCESSIBILITY OF THE WISCONSIN-REVISED COMMERCIAL BUILDING CODE, CODE, CH. 41 DESIGN GUIDELINES.
- FINISHED FLOOR ELEVATION +100'-0" ON ARCHITECTURAL DRAWINGS. VERIFY ACTUAL ELEVATION WITH CIVIL DRAWINGS.
- REFER TO SURVEY FOR ALL PROPERTY LINE BEARINGS AND LENGTHS.
- REFER TO CIVIL DRAWINGS FOR SITE ENGINEERING & DETAILS (LOADING, PAVING, UTILITIES, STREET WATER, EROSION CONTROL, ETC.).
- REFER TO CIVIL DRAWINGS FOR EXACT BUILDING PLACEMENT.
- REFER TO CIVIL AND/OR SITE PLANS FOR DEMOLITION INFORMATION.
- UTILITY DESIGNATIONS WITHIN 5 FT. OF EXTERIOR OF BUILDINGS AND INSIDE BUILDINGS TO BE BY DESIGN / BUILT CONTRACTORS.
- ALL CONSTRUCTION CONSTRUCTION TRAFFIC, DELIVERIES, STORAGE OF MATERIALS, VEHICLES, EQUIPMENT AND OTHER CONSTRUCTION RELATED ITEMS ARE TO BE LOCATED IN PROJECT AREA ONLY. PROTECT AND SURROUND AREA AS NECESSARY.
- CONSTRUCTION SITE EROSION AND SEDIMENTATION CONTROL SHALL COMPLY WITH THE REQUIREMENTS OF THE MUNICIPALITY AND SHALL EMPLOY METHODS AS SHOWN AND SPECIFIED IN THE WISCONSIN DEPARTMENT OF NATURAL RESOURCES 'CONSTRUCTION SITE BEST MANAGEMENT PRACTICES HANDBOOK' (REFER TO CIVIL DWGS. FOR FURTHER INFORMATION).

**CODED NOTES:**

- PROVIDE RESERVED VEH ACCESSIBLE PLACED SIGN IN ACCORDANCE WITH CH. 9, SECTION 182.4 OF THE WISCONSIN A.S.I.T. 1-1996, AMERICAN NATIONAL STANDARDS FOR ACCESSIBLE AND USABLE BUILDINGS AND FACILITIES (SEE 3140.2).
- PAINTED INTERNATIONAL SYMBOL OF ACCESSIBILITY IN ACCORDANCE WITH ADAAG 1111.1 (SEE 3140.2).
- PROVIDE 4" WIDE PAINTED STRIPING AS INDICATED ON PLAN. PAINT SHALL BE TRAFFIC YELLOW PL-464.
- ACCESSIBLE PARKING STALLS TO HAVE A SLOPE NO GREATER THAN 1:50 (2%) IN ANY DIRECTION AND SHALL BE SLOPED TO DRAIN AWAY FROM CURBS AND/OR SIDEWALKS.
- ACCESSIBLE PATH OF TRAVEL TO COMPLY WITH CODEL CH 61.104.
- SIDEWALK TO BE FLUSH WITH PARKING LOT PAVING, THIS AREA.
- PRE-CAST CONCRETE BASES, STOP AND/OR THROUGH PAVING INTO SUB-GRADE WITH (2) 2" LONG REB - TYPICAL AT ALL ACCESSIBLE PARKING STALLS AT EDGE OF ASPHALT CONDITION.
- 6" PIPE BOLLARD (SEE DT. 6140.2). SEE FLOOR PLANS FOR ADDITIONAL LOCATIONS.
- ENTRANCE ROADWAY PAVING (SEE CIVIL DRAWINGS).
- EDGE OF ASPHALT PAVING - NO CURB (SEE CIVIL DRAWINGS).
- EDGE OF ASPHALT PAVING / CONCRETE JOINT (SEE CIVIL DRAWINGS).
- ADA-COMPLIANT ACCESSIBLE CURB RAMP W/ NON-SLIP TEXTURE IN CONC. WALK (SEE CIVIL DWG. DRAWINGS).
- 4" THICK CONCRETE SIDEWALK ON FREELY DRAINING COMPACTED GRANULAR BASE COURSE (SEE CIVIL DRAWINGS).
- 4" THICK CONCRETE CURB / SIDEWALK ON FREELY DRAINING COMPACTED GRANULAR BASE COURSE (SEE DETAIL 6140.2 & SEE CIVIL DRAWINGS).
- 4" THICK REINFORCED CONCRETE SLAB ON GRADE W/ 6"x 8"x 8" REB ON 8" LAYER OF FREELY DRAINING COMPACTED GRANULAR BASE COURSE. FITCH TO DOORS OF ENCLOSURE (SEE CIVIL DRAWINGS).
- 6" HIGH CONCRETE CURB (SEE CIVIL DRAWINGS).
- NOT USED.
- EXISTING CONCRETE CURB & GUTTER TO REMAIN.
- EXISTING CONCRETE SIDEWALK TO REMAIN.
- SURFACE MOUNTED LIGHT FIXTURE.
- NOT USED.
- LANDSCAPE BUFFER.
- MASONRY DUMPSTER ENCLOSURE. REFER TO 1142.2, 2142.2, 2144.3, 2144.2 AND STRUCTURAL DRAWINGS FOR FURTHER DETAILS.
- CATCH BASIN REFER TO CIVIL DRAWINGS FOR FURTHER INFORMATION.
- RETAINING WALL - REFER TO 2140.3 AND STRUCTURAL DRAWINGS FOR ADDITIONAL INFORMATION.
- POURED IN PLACE CONCRETE STAIRS WITH HAND RAILS 9" BOTH SIDES - SEE STRUCTURAL DRAWINGS FOR ADDITIONAL INFORMATION.
- CONCRETE SCREEN WALL. REFER TO 2140.3 AND STRUCTURAL DRAWINGS FOR ADDITIONAL INFORMATION.
- STEPPED CONCRETE RETAINING WALL. REFER TO 2140.3 AND STRUCTURAL DRAWINGS FOR ADDITIONAL INFORMATION.
- NEW CONCRETE CURBS CUT.
- LINE OF CANOPY ABOVE.
- 5' SIGN 'EMPLOYEE PARKING ONLY'.

SITE INFORMATION	
SIZE	0.33 ACRES (14500 SF)
ZONING	DPD
BUILDING COVERAGE	6,300 S.F.
PARKING AND SIDEWALK AREA	7,406 S.F.
GREEN SPACE	341 S.F.
SURFACE PARKING PROVIDED	16 SPACES + 2.5 SPACES PER 1000 S.F.
BUILDING HEIGHT	20'-0" BUILDING
SETBACKS	BUILDING OF STREET FRONTAGE 10' SIDE 3' ALLEY

REVISION:	
△	
△	
△	
△	

PROJECT NO: 24023  
DATE: 06.17.05  
SHEET NAME: SITE DEVELOPMENT PLAN  
SHEET NO:

GARFIELD STREET

**SITE PLAN**  
SCALE: 1/8" = 1'-0"  
NORTH

**A0.1**