

## WHAT WE DO

The Northwest Side Community Development Corporation (NWSCDC) serves the economic development needs of Milwaukee's Northwest Side communities through three major program areas—Business Lending, Community Organizing, and Catalytic Projects.

NWSCDC has a strategic focus on redevelopment of the 30th Street Industrial Corridor.



If you are interested in partnering with the NWSCDC to support the revitalization of Milwaukee's Northwest side communities, visit us at [nwscdc.org](http://nwscdc.org) to sign up for our newsletter, make an online donation, or get in touch.

We are grateful for your support.

Visit **NWSCDC.ORG**

To sign up for our Newsletter  
or Make a Donation!



## OUR HISTORY



The NWSCDC was founded in 1983 with the vision to transform the Northwest side of Milwaukee into a preferred destination for residents and businesses. A few highlights of our accomplishments include:

- Co-developing Villard Square featuring the mixed-use Villard Ave Library Branch and grand-family housing; this project has become a new model for mixed-use library development in Milwaukee.
- Engaging thousands of residents in the Northwest side as part of our Neighborhood Strategic Planning efforts.
- Investing over \$10 million in business lending, helping create over 1,000 jobs since 2000.
- Partnering to support social and environmental improvements, including projects for green stormwater management, beautification of public spaces, and safe and healthy transportation options.

## CONTACT US

NWSCDC  
Century City Tower, 7th Floor  
4201 N 27th St  
Milwaukee, WI 53216

Phone: 414-444-8200

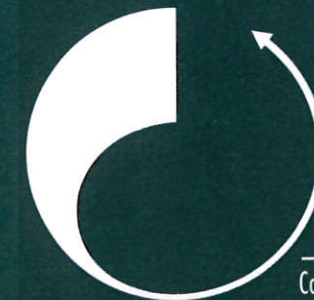
Fax: 414-444-8201

**NWSCDC.ORG**



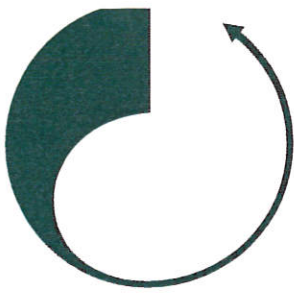
NORTHWEST SIDE  
COMMUNITY  
DEVELOPMENT  
CORPORATION

Community Reinvestment at Work



NORTHWEST SIDE  
COMMUNITY  
DEVELOPMENT  
CORPORATION

Community Reinvestment at Work



Neighborhood Strategic Planning is supported by the City of Milwaukee



**NSP Area 1 Coordinator**  
**Cassandra Flagg**  
cflagg@nwsdc.org  
414-444-8200 ext 8106



**NSP 3 Coordinator**  
**Dani Breen**  
dbreen@nwsdc.org  
414-444-8200 ext 8102



**NSP 4 Coordinator**  
**Barbara Nuell-Moore**  
barbara.nmoore@nwsdc.org  
414-444-8200 ext 8204

Contact for the portion of Century City TIN Area east of 31st Street.

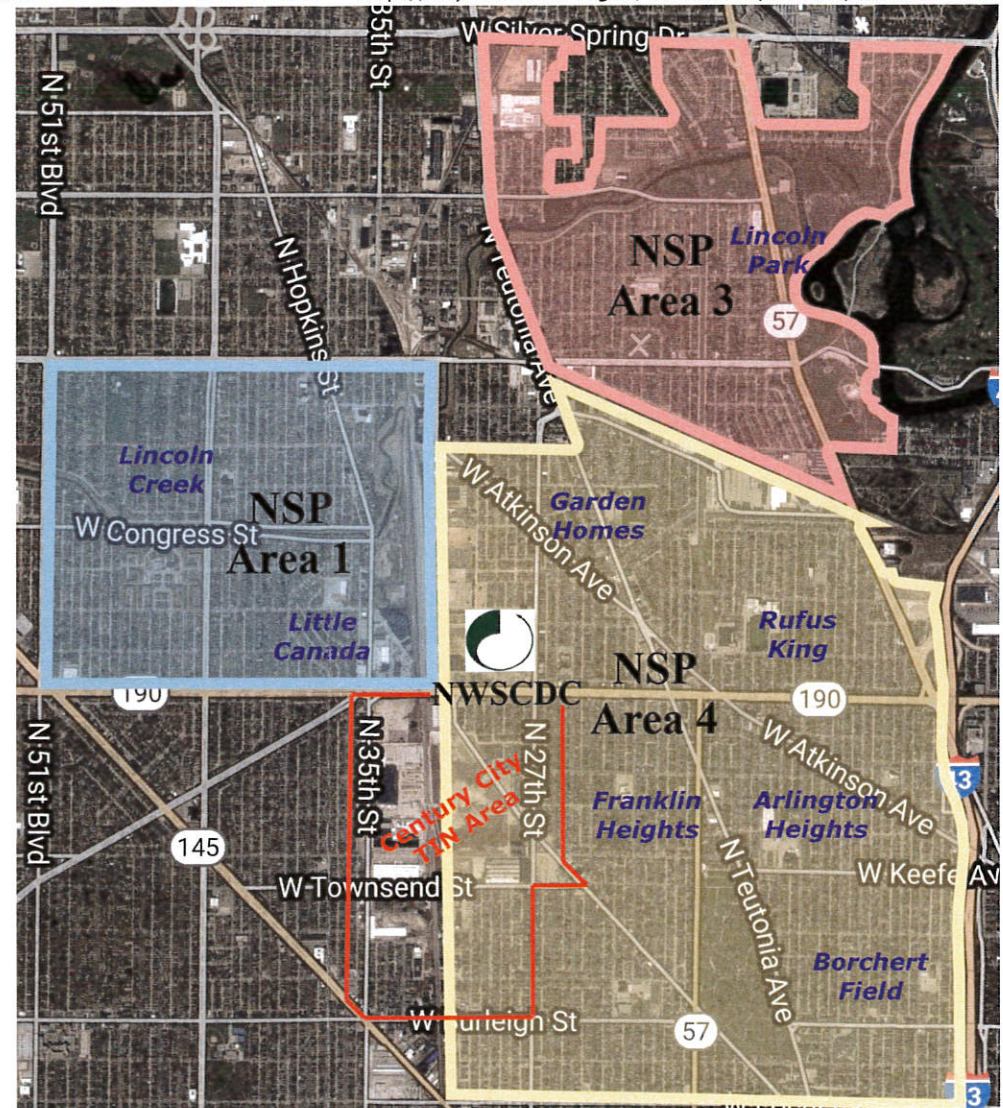


**NSP Area 1** is bounded by Hampton Ave to the north, 30th Street Rail Corridor to the east, Capitol Dr to the south, and N 51st St to the west as shown below.

**NSP Area 3** is made up of the City of Milwaukee area (excluding Glendale) from Silver Spring Dr in the north, Lincoln Park in the east, the rail corridor near Purdue St / Cornell St in the south, and N Teutonia Ave in the west, as shown below.

**NSP Area 4** is mostly bounded by the rail corridor near Purdue St / Cornell St in the north, Highway 43 in the east, Locust St in the south, and the 30th Street Rail Corridor in the west, as shown below.

NSP Areas are defined by the City of Milwaukee.  
<http://city.milwaukee.gov/CommunityDevelopment310.htm>



Through Neighborhood Strategic Planning, the NWSDC partners with residents, schools, churches, businesses, elected officials, the Milwaukee Police District, the District Attorney's Office, Community Prosecution Units, Community Partners, and surrounding NSP Coordinators to enhance the quality of life by improving safety. NWSDC staff take a proactive approach by establishing and maintaining block clubs, block watches, creating compacts with landlords, organizing area cleanups, and working with the Targeted Investment Neighborhood (TIN) program.

**We do this by:**

- **Establishing Block Clubs**
- **Promoting residents' voices in issues of neighborhood safety**
- **Working with established community organizations**
- **Helping build positive relationships with law enforcement**
- **Conducting door-to-door outreach**
- **Collaborating and supporting community partners,**
- **Organizing community clean-ups, and more.**