

1

R= 100.00'
A= 21.63'
C= 21.59'
I-4= 12°23'39"
D-4= 6°11'49.5"
C-B= S.28°17'18"E.

N.W. 1/4 SEC. 29, T.7N., R.22E.

391

N. 10th

St.

124

307.15

123.18

St.

Ave.

NORTH - SOUTH
FREEWAY

GEO. SMITH'S

(MILW. CO.)
TAX KEY NO.
391-0601-100

ADDITION

BLOCK 184
A. ELDRED'S SUBD.

184

TAX KEY NO.
391-0140-100

235.25

184

TAX KEY NO.
391-0140-100

122.86

122.86

62.43

61.43

W.52.90'

W.52.90'

14.15

14.15

10

10

123

123

124

124

1/4 SEC. LINE

(R.O.W. VARIES)

(70' R.O.W.)

S.00°32'38"W. 87.45'

R.100.00'

S.34°29'06"E. 103.82'

S.00°32'38"W. 239.64'

N.00°32'38"E. 379.68'

N.11th

St.

70

70

70

70

70

70

70

82

5.63°15'12"W.

78.77°

70

70

70

70

70

70

70

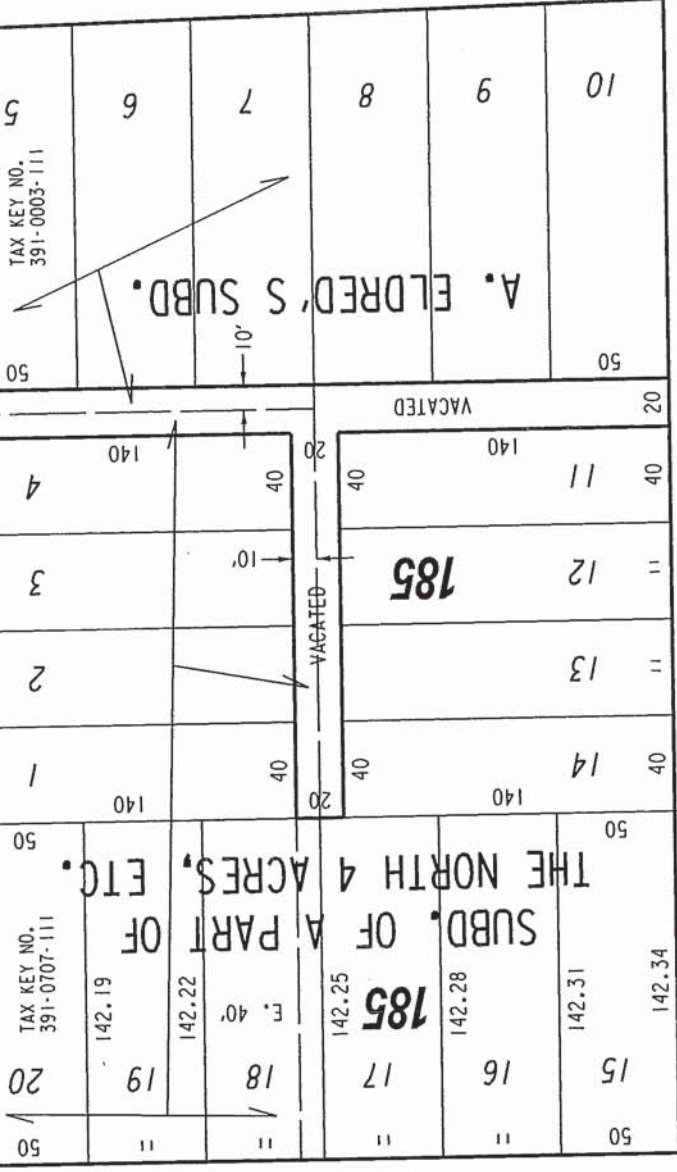
70

70

70

70

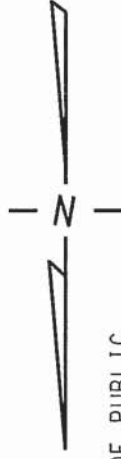
70



N. 12th

St.

(70' R.O.W.)



PORTION OF PUBLIC
STREET PROPOSED
TO BE VACATED

EXHIBIT "A"

FILE NO. 070066

INFRASTRUCTURE SERVICES DIVISION

REVISED: MARCH 11, 2011
OWNERSHIPS REVISED

MILWAUKEE, WISCONSIN

ASSIGNED TO: W.E. FUCHS

CH'K'D. BY: W.E. FUCHS

DRAWN BY: W.E.F.

DATE: JULY 16, 2008

PROJECT/GRANT NO.: WK52337246

SCALE: 1" = 80'

APPROVED BY:

Maicia Connell

CENTRAL DRAFTING & RECORDS MANAGER

Maicia Connell
 CENTRAL DRAFTING & RECORDS MANAGER
 CIVIL ENGINEER