

N.E. 1/4 SEC. 20, T.7N., R.22E.

353

(R.O.W. VARIES)

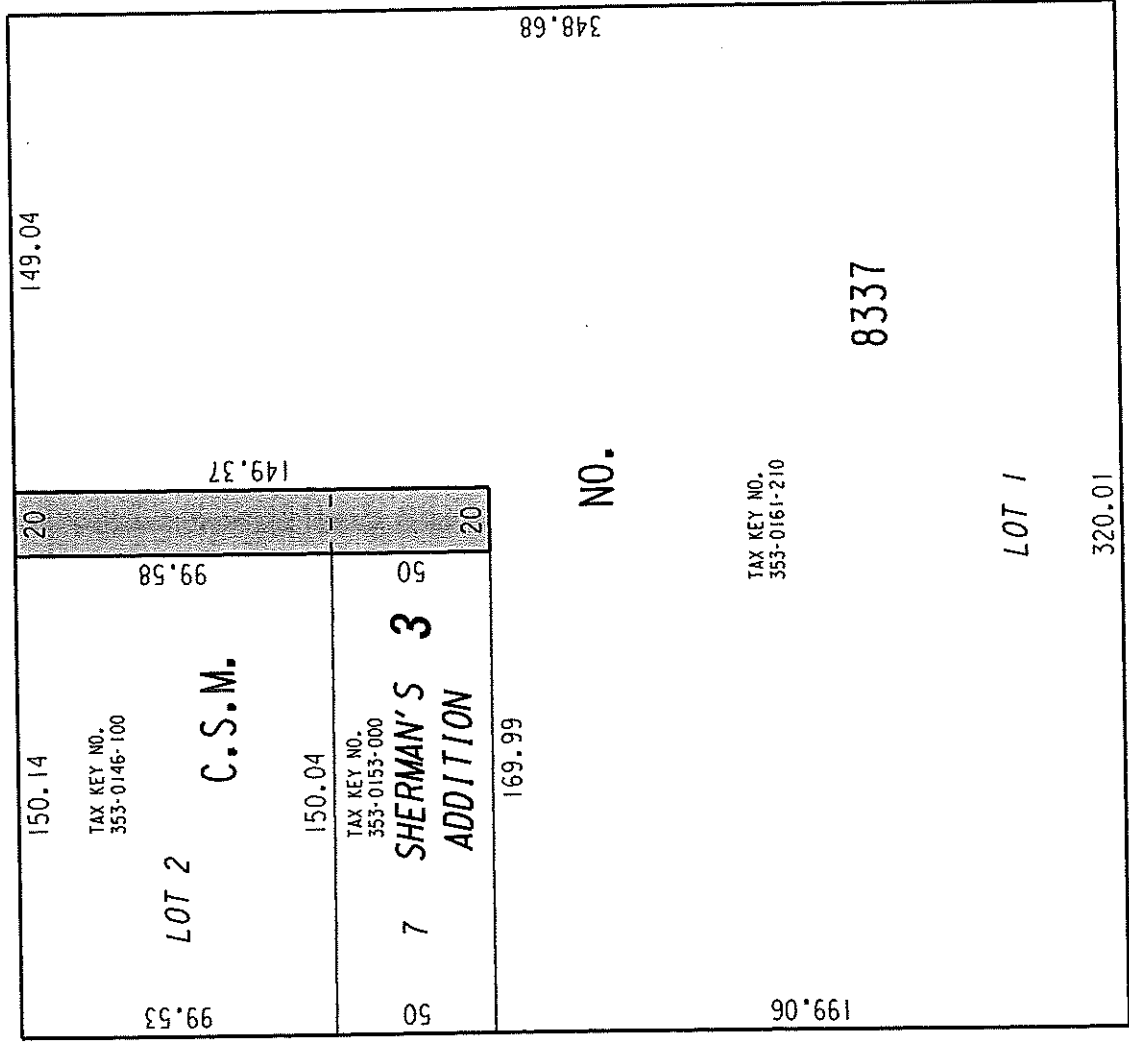
**E. North**

**Ave.**

SEC. LINE

45.23

44.55



**N. 1st**

**St.**

(80' R.O.W.)

NO.

TAX KEY NO.  
353-0161-210

**N. Palmer**

8337

LOT 1

**E. Garfield**

(70' R.O.W.)

**Ave.**



PUBLIC ALLEY PROPOSED  
TO BE VACATED

EXHIBIT "A"

FILE NO. 111584

INFRASTRUCTURE SERVICES DIVISION

MILWAUKEE, WISCONSIN

ASSIGNED TO: W.E. FUCHS

CH'K'D. BY: W.E. FUCHS

DRAWN BY: W.E.F.

DATE: APRIL 20, 2012

PROJECT/GRANT NO.: WK52337315

SCALE: 1" = 60'

APPROVED BY:

*Marcia Connell*

CENTRAL DRAFTING & RECORDS MANAGER

*[Signature]*

CITY ENGINEER