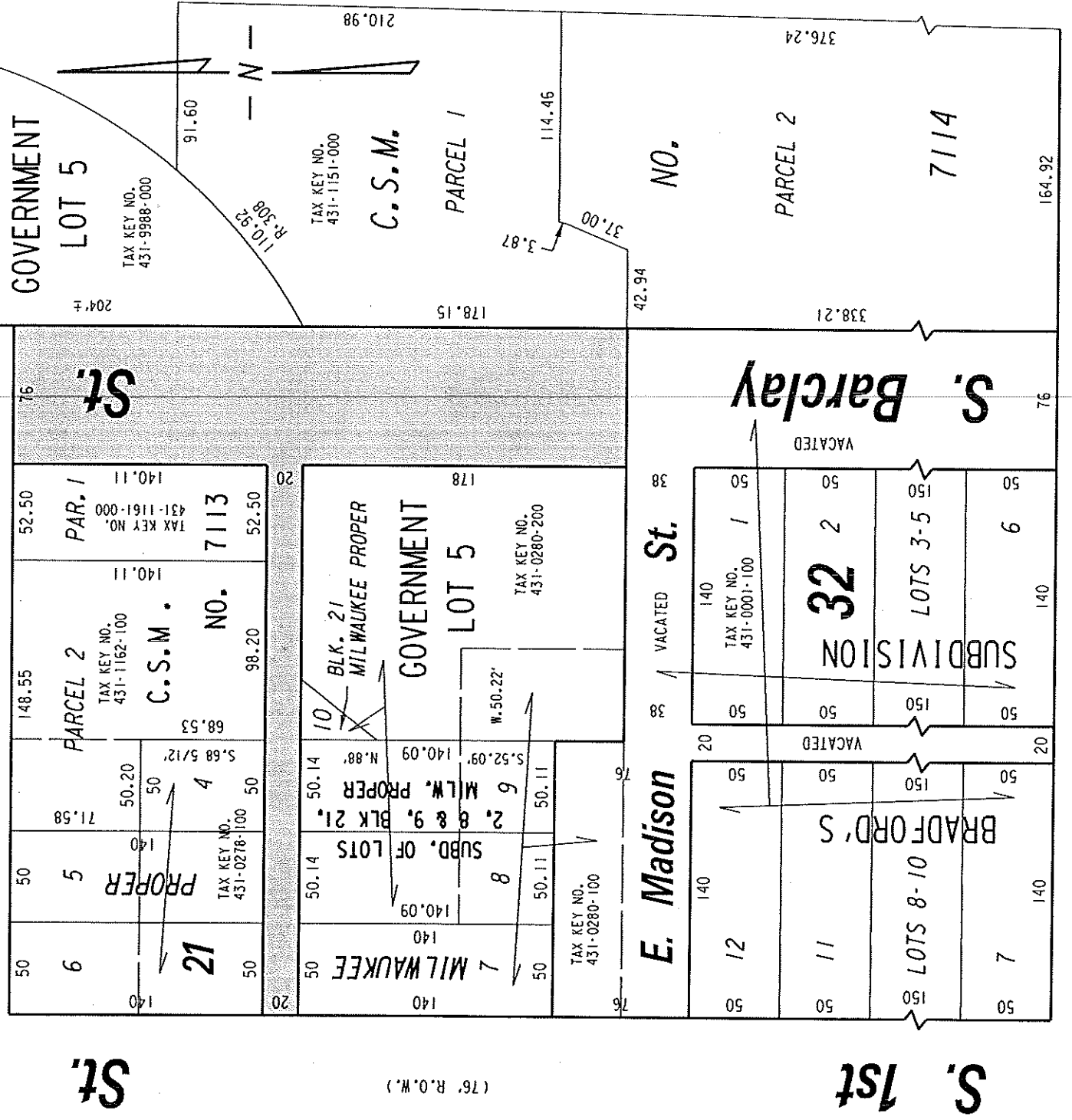


431

S.E. 1/4 SEC. 32, T.7N., R.22E.

E. Scott
(76' R.O.W.)

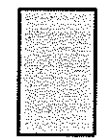
St.



E. Greenfield

SEC. LINE

Ave.



PUBLIC STREET AND ALLEY PROPOSED TO BE VACATED

EXHIBIT "A"
FILE NO. 141000

INFRASTRUCTURE SERVICES DIVISION
MILWAUKEE, WISCONSIN

ASSIGNED TO: W. FUCHS
DRAWN BY: W. FUCHS
PROJECT/GRANT NO.: WK52337360
APPROVED BY:

CH'K'D. BY: W. FUCHS
DATE: NOV. 4, 2014
SCALE: 1" = 80'

[Signature]
CENTRAL DRAFTING & RECORDS MANAGER

[Signature]
CITY ENGINEER