

## Exhibit B

### EMERGENCY MEDICAL SERVICES GUIDELINES

#### Transfer of Patient Care

1. Unless directed otherwise by MFD personnel, provider personnel are to bring oxygen and a patient movement device upon initial patient contact or be able to provide one without leaving the patient.
2. Transfer of patient care occurs when the receiving provider acknowledges the verbal report given by the on scene provider and accepts responsibility for patient care.
3. The transporting provider may receive a written or electronic report on scene from the transferring provider, or may obtain a copy of the patient care record for the patient transported from the receiving hospital. Any original paper report that is handed over to the transporting unit is to be given to the receiving facility. The transporting unit may keep a copy of the report.
4. The transporting unit is to provide replacement of oxygen delivery devices, cervical collars and splints to the non-transporting unit.

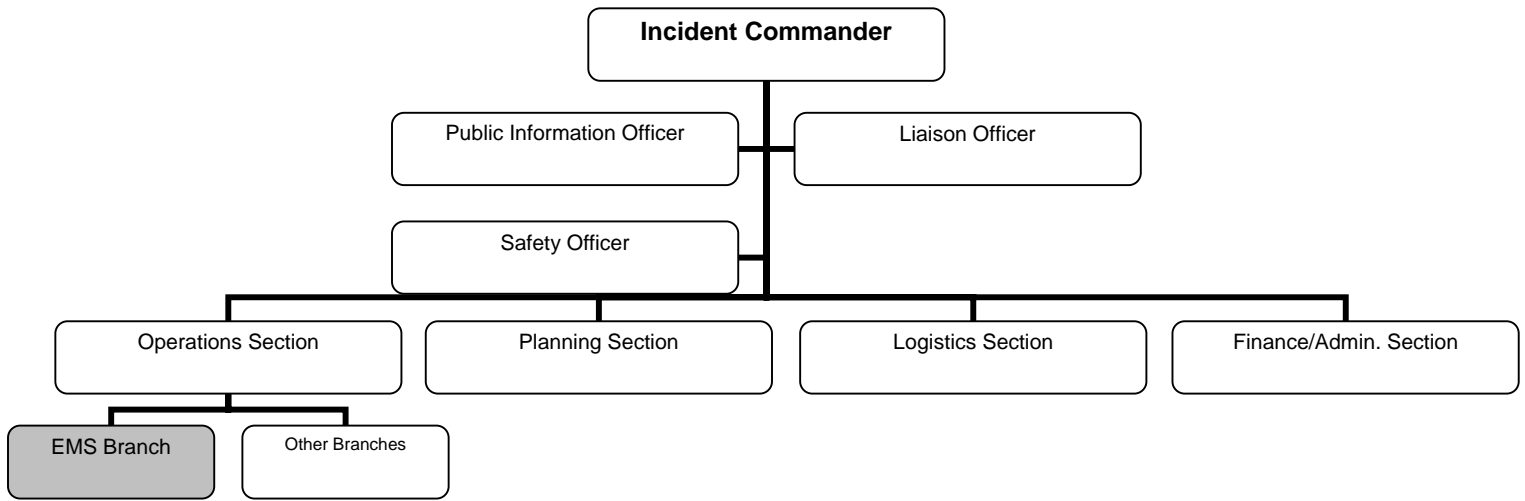
#### Transport

1. The patient may be accompanied in the ambulance by one person, riding in the front seat, unless a member of the ambulance crew feels that this may adversely affect the care of the patient or the safety of the crew members. An interpreter for a patient or a parent of a young child may ride in the patient compartment if medically necessary.
2. In a medical emergency situation, where a parent, guardian or parent-designated responsible party is not present, a minor may be transported without parental permission. In such instances, the transporting provider is to attempt to contact the parents or guardian and identify the transport destination unless prohibited by the patient's condition.

# EMERGENCY MEDICAL SERVICES GUIDELINES

## Large Scale Event Operations

The Incident Commander is in charge of the overall scene. If needed, an EMS Branch Director may be assigned to manage patient care activities. Depending on the size of the incident and available personnel, the EMS Branch Director may further delegate and assign duties to the Triage Group Supervisor, the Treatment Group Supervisor, the Transportation Group Supervisor and the EMS Staging Area Manager.



1. If the provider is the sole initial responder at an event the following actions are to be initiated. Command is to be transferred upon arrival of the appropriate City agency.
  - a. Position vehicle upwind, upgrade and at a safe distance.
  - b. Provide a "First In Report" to the provider's dispatch to the following information:
    - 1) Description and exact location of the incident
    - 2) Possibility of chemical exposure if suspected
    - 3) Type(s) of structures/vehicles involved
    - 4) Presence of fire, spilled liquids, vapor leaks, or other hazards
    - 5) Estimated number of injuries or casualties

*Provider's dispatch is to relay information to MFD dispatch.*

- c. Contact Milwaukee County EMS Communications (EMS Communications) to:
  - 1) Report the type of incident and location.
  - 2) Report the approximate number of patients.
  - 3) Potential for chemical exposure (yes or no)
  - 4) Potential crime scene (yes or no)

## EMERGENCY MEDICAL SERVICES GUIDELINES

*Hospital poll information from EMS Communications is to be relayed to the MFD EMS Branch Director.*

2. Upon arrival at a multiple unit response incident, the responding private provider personnel are to report to:
  - a. The EMS Staging Area Manager if a staging area has been established.
  - b. The MFD EMS Branch Director if no staging area has been defined.

*Private provider personnel are to position the ambulance in a manner that allows for rapid egress and does not interfere with other responding units.*

3. The following information must be reported to the Incident Commander/MFD EMS Branch Director for any patient transported from a multi-casualty incident or fire scene:
  - a. Name
  - b. Gender
  - c. Age/DOB
  - d. Home address
  - e. Location of patient when found
  - f. Chief complaint
  - g. Other injuries
  - h. Transport destination

### Extreme Weather Operations

When determined by the on duty MFD Firefighting Deputy Chief that conditions of extreme heat or cold exist (apparent temperature reaches 90° F or greater or falls to -10° F or less based on Heat or Wind Chill indices):

1. MFD dispatch will notify providers
2. MFD dispatch will dispatch a private ambulance simultaneously with an engine company or ladder company on EMS runs where patients may be exposed to the elements.
3. Providers are to contact the Fire Dispatch Supervisor at 286-5350 with the incident number (or location) and a brief description of any response related to the extreme temperatures if patient is not transported.

This protocol will remain in effect until canceled by the Firefighting Deputy Chief.

## EMERGENCY MEDICAL SERVICES GUIDELINES

### Potentially Dangerous Situations

If the provider is the first or only responding unit on the scene, provider personnel are to make a determination regarding the safety of the scene based upon **both** the given information and scene observation. If provider personnel determine that the scene is not safe to enter, the provider is to stage in a safe area in the vicinity of the alarm. Staging status and location and the status of police department units (on scene/not on scene) are to be reported to the MFD dispatcher.

### Police Requests

A request must be made by the provider for police investigation/assistance in the following situations:

- Any death including Suspected SIDS
- Suspected child abuse/neglect
- Suspected elder abuse
- Sexual assaults
- Overdose
- Poisonings (whether homicidal, suicidal, or accidental)
- Other assault/battery complaints
- Any injury caused by firearms or other weapons
- Any other crime
- Any critical injury caused by unusual circumstances such as explosion or industrial accident
- Personal injury motor vehicle accidents
- Need for emergency detainment or protective custody
- Need for scene security

## EMERGENCY MEDICAL SERVICES GUIDELINES

### TRANSPORT OF PERSONS IN POLICE CUSTODY

1. Ambulance transport for persons in police custody, exclusive of emergency detention under Wisconsin Statute 51.15, and protective custody under Wisconsin Statute 51.45 (11)(b), is to be to the closest medically appropriate hospital.
2. Ambulance transports for persons placed under protective custody pursuant to Wisconsin Statute 51.45 (11)(b), is to be to the closest medically appropriate hospital.
3. All persons held on emergency police detention under Wisconsin Statute 51.15, may be transported directly to the Milwaukee County Mental Health Psychiatric Crisis/Admitting Center by private providers in accordance with the following guidelines:

a. If the patient is suicidal -

**All** of the following conditions must be met:

- No ingestion/overdose or injury to self
- Vital signs are normal
- No active, ongoing medical problems (e.g., untreated diabetes mellitus)

b. If the patient is not suicidal -

**All** of the following conditions must be met:

- History of psychiatric illness
- No ingestion/overdose or injury to self
- Vital signs are normal
- No active, ongoing medical problems (e.g., untreated diabetes mellitus)

If the patient's status is unclear, contact the Psychiatric Crisis Service.

If medical care is necessary, transport to the closest, medically appropriate hospital.

Providers may request an officer to accompany the patient. Private provider personnel will be provided with a completed MPD Form PP-42.

4. Prisoner transports are to be made according to the transport protocol. An officer is to accompany all prisoners.

# EMERGENCY MEDICAL SERVICES GUIDELINES

## MANAGEMENT OF DECEASED PERSONS

The following guidelines are to be adhered to by private provider personnel for management of deceased persons.

### I. Suspicious Deaths

The death is considered to be from other than natural causes, including suspected sudden infant death syndrome (SIDS), crimes, suicide and accidental death.

#### A. Notification of Police/Medical Examiner (M.E.)

1. **CPR was not indicated**, as per criteria for beginning CPR.
  - a. Private provider personnel are to request through their dispatcher:
    - (1) Milwaukee Police Department (MPD) notification
    - (2) Medical Examiner (ME) notification
2. **CPR was initiated** by the first-in BLS unit and care turned over to responding ALS unit.
  - a. MFD ALS unit personnel are to request notification of MPD and ME.
  - b. If non-MFD ALS unit, private provider personnel are to request notification of MPD and ME through their dispatcher.

#### B. Interface with the Police Department

1. To maintain the chain of custody, an EMS provider must stand by until the arrival of the police department or medical examiner.
  - a. The private provider is to stand by if the only EMS provider on the scene.
  - b. If ALS interventions performed
    - (1) by MFD unit - MFD unit is to stand by.
    - (2) by non-MFD unit - private provider is to stand by.
2. The MPD/ME will assume custody of the body upon arrival.
3. If standing by, the private provider personnel will supply the Milwaukee Police Department investigating officer/Medical Examiner with a verbal report of the following information:
  - a. Names of personnel staffing the responding unit.
  - b. The time that it was determined that the patient met criteria for non-resuscitation (decapitation, rigor mortis, tissue decomposition, or dependent lividity)  
or
  - c. The time it was determined that the patient had a valid "do not resuscitate" order/bracelet.

## EMERGENCY MEDICAL SERVICES GUIDELINES

or

- d. The time paramedics discontinued resuscitation efforts or determined that no resuscitation efforts were indicated.
4. If assessment/resuscitation attempt was performed by the ALS unit, the paramedic report is to be completed and given to the Medical Examiner investigator or funeral director. In the event that the M.E. or funeral director is not on the scene, the envelope should be left in the custody of the MPD.
5. The private provider may return to service when the transfer of the body is complete.

### C. Disposition of the body

1. Do not move the body unless necessary for assessment, resuscitation attempt or scene control.
  - a. The body should not be covered unless absolutely necessary, and then only with a clean, disposable blanket.
  - b. Transportation will be arranged through the Medical Examiner's office by MPD personnel.
2. If the body was placed in the private provider's unit for assessment, resuscitation attempt or scene control
  - a. The body is not to be moved to another vehicle; the unit will transport to the Medical Examiner's office.
  - b. A Criminal Investigation Bureau Detective or Lieutenant of Detectives must first authorize transport of the body.
  - c. A police officer or detective will ride with the unit to the Medical Examiner's office to ensure proper transfer of custody of the body.

### D. Private Provider Guidelines for Transport of Deceased Persons

1. The private provider is to notify the Medical Examiner's office of the transport via telephone at 223-1200.
2. If no investigator is available, the Milwaukee County Sheriff's dispatcher taking the call will provide the private provider with the phone number of the investigator's cellular phone.
  - a. The private provider is to contact the investigator via the cellular phone to arrange for access to the Medical Examiner's office.
  - b. If the investigator will be delayed longer than 30 minutes, personnel from the Medical Examiner's office will be called in from off duty to accept the body.

## EMERGENCY MEDICAL SERVICES GUIDELINES

3. The Medical Examiner's office is located at 933 West Highland Avenue. Enter on 9th street between West Highland Avenue and West State Street at pole #1041. Ring the bell to gain entry.
4. An EMS report is to be completed and a copy will be left at the Medical Examiner's office.
5. A member of the transporting private provider unit will witness and sign the property inventory performed by the Medical Examiner's investigator.

### II. Non-suspicious Deaths

The death is apparently due to natural causes

#### A. Notification of Police/Medical Examiner

1. **CPR was not indicated**, as per criteria for beginning CPR.
  - a. Private provider personnel are to request through their dispatcher:
    - (1) Milwaukee Police Department notification
    - (2) Medical Examiner notification
2. **CPR was initiated** by the first-in BLS unit, and care turned over to responding ALS unit.
  - a. MFD ALS unit personnel are to request notification of MPD and ME.
  - b. If non-MFD ALS unit, private provider personnel are to request notification of MPD and ME through their dispatcher.

#### B. Interface with the Milwaukee Fire Department

1. If MFD personnel are on the scene, they will assume custody of the body and the private provider will be released.
2. If MFD units are standing by and the MPD or ME is not on the scene within 20 minutes of dispatch notification of 10-99, the MFD dispatcher will request a private provider. The MFD dispatcher will also request an estimated time of arrival (ETA) from the MPD unit and relay to the responding private provider.
  - a. The private provider will assume custody of the body and stand by in place of the MFD unit until the arrival of the MPD/ME.
  - b. Based on the ETA of the responding MPD unit, the private provider may decide to stand by at the scene or to transport directly to the Medical Examiner's office.



## EMERGENCY MEDICAL SERVICES GUIDELINES

### C. Interface with the Police Department

1. To maintain the chain of custody, an EMS provider must stand by until the arrival of the police department or medical examiner.
  - a. The private provider is to stand by if the only EMS provider on the scene or if ALS unit on scene is non-MFD.
    - (1) If the police department is not on the scene within 20 minutes after notification (confirm time elapsed with dispatch), the transport unit may proceed to the Medical Examiner's office without police interface.
2. The MPD/ME will assume custody of the body upon arrival.
3. The private provider personnel will provide the Milwaukee Police Department investigating officer/Medical Examiner with a verbal report of the following information:
  - a. Names of personnel staffing the responding unit.
  - b. The time that it was determined that the patient met criteria for non-resuscitation (decapitation, rigor mortis, tissue decomposition, or dependent lividity, DNR order/bracelet).  
or
  - c. The time paramedics discontinued resuscitation efforts or determined that no resuscitation efforts were indicated.
4. If assessment/resuscitation attempt was performed by the ALS unit, a paramedic report is to be completed and given to the Medical Examiner investigator or funeral director. In the event that the M.E. or funeral director is not on the scene, the envelope should be left in the custody of the MPD.
5. The private provider may return to service when the transfer of the body is complete.

### D. Disposition of the body

1. If the body is in a private building, residence or a public area that can be secured from public view:
  - a. Do not move the body or disturb the scene.
  - b. The body should not be covered unless absolutely necessary, and then only with a clean, disposable blanket.
  - c. Transportation will be arranged through the Medical Examiner's office by MPD personnel.
2. If the body is located in a public area that cannot be secured from public view, the body is to be placed in the private provider's unit.
3. If the body was placed in the private provider's vehicle for assessment, resuscitation attempt, or scene control, or to secure

## EMERGENCY MEDICAL SERVICES GUIDELINES

from public view, the unit will transport to the Medical Examiner's office.

### E. Transport Guidelines for Private Providers

1. The private provider must notify the Medical Examiner's office of the transport via telephone at 223-1200.
2. If no investigator is available, the Milwaukee County Sheriff's dispatcher taking the call will provide the private provider with the phone number of the investigator's cellular phone.
  - a. The private provider is to contact the investigator via the cellular phone to arrange for access to the Medical Examiner's office.
  - b. If the investigator will be delayed longer than 30 minutes, personnel from the Medical Examiner's office will be called in from off duty to accept the body.
3. The Medical Examiner's office is located at 933 West Highland Avenue. Enter on 9th street between West Highland Avenue and West State Street at pole #1041. Ring the bell to gain entry.
4. An EMS report is to be completed and a copy will be left at the Medical Examiner's office.
5. A member of the transporting private provider unit will witness and sign the property inventory performed by the Medical Examiner's investigator.