

S.W. 1/4 SEC. 29, T.7N., R.22E.

RIVER

MENOMONEE

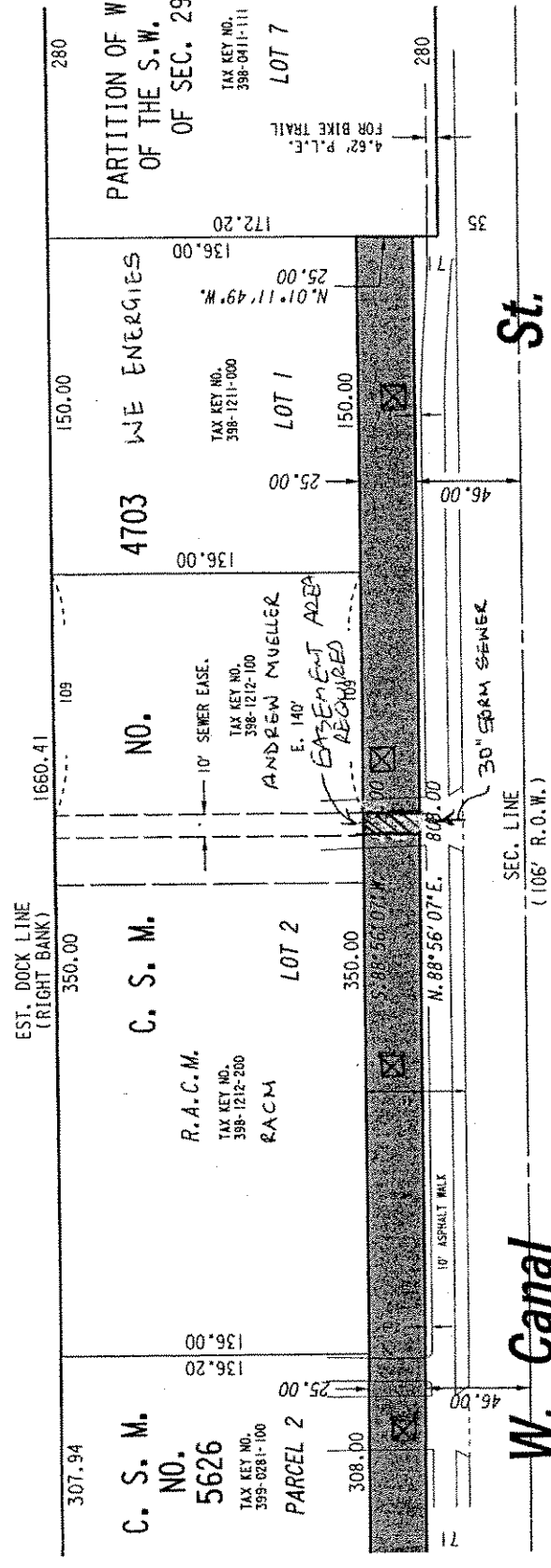


EXHIBIT "A"
 FILE NO. 041050
 INFRASTRUCTURE SERVICES DIVISION
 MILWAUKEE, WISCONSIN
 CH'K'D. BY: W.E. FUCHS
 DATE:
 PROJECT/GRANT NO.: WK52337206
 SCALE: 1" = 60'

PRELIMINARY MAP

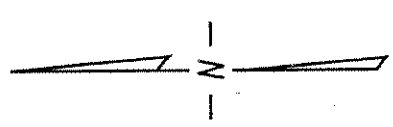
ASSIGNED TO: W.E. FUCHS
 DRAWN BY: W.E.R.
 APPROVED BY:
 CENTRAL DRAFTING & RECORDS MANAGER
 CITY ENGINEER

(MAP 1 OF 2)

PORTION OF PUBLIC STREET PROPOSED TO BE VACATED

S.E. 1/4 SEC. 30, T.7N., R.22E. **399** S.W. 1/4 SEC. 29, T.7N., R.22E. **398**

S.E. 1/4 SEC. 30, T.7N., R.22E. **399** S.W. 1/4 SEC. 29, T.7N., R.22E. **398**



N. Ember Ln.
(R.O.W. VARIES)
132.26
5.31' 40' 31" W.
10.00
R. 50.00
107.32

MENOMONEE RIVER
EST. DOCK LINE (RIGHT BANK)
147.15
1660.41
307.94

607.73
310.05

C. S. M. NO. 5626

TAX KEY NO.
399-0281-100
CANAL ST. LLC

PARCEL 1

PARCEL 2

EASEMENT AREAS REQUIRED

213.55
S. 88° 37' 39" E. 7.00

S. 88° 41' 31" W. 401.59

205.65
N. 88° 41' 31" E. 46.00

10' ASPHALT WALK 808.00

36" STORM SEWER 9.00

SEC. LINE (106' R.O.W.)

St.

W. Canal

EXHIBIT "A"

FILE NO. 041050

INFRASTRUCTURE SERVICES DIVISION

MILWAUKEE, WISCONSIN

CH'K'D. BY: W.E. FUCHS

DATE:

SCALE: 1" = 60'

ASSIGNED TO: W.E. FUCHS

DRAWN BY: W.E.F.

PROJECT/GRANT NO.: WK52337206

APPROVED BY:

①

②

PORTION OF PUBLIC STREET PROPOSED TO BE VACATED

- R. 50.00'
- A. 107.32'
- C. 87.87'
- I. 122° 59' 00"
- D. 61° 29' 30"
- C.B. N. 29° 48' 59" W.
- R. 56.00'
- A. 102.91'
- C. 89.03'
- I. 105° 17' 11"
- D. 52° 38' 35.5"
- C.B. S. 20° 58' 04.5" E.

PRELIMINARY MAP

(MAP 2 OF 2)

CITY ENGINEER

CENTRAL DRAFTING & RECORDS MANAGER