



Building 4- Elevation



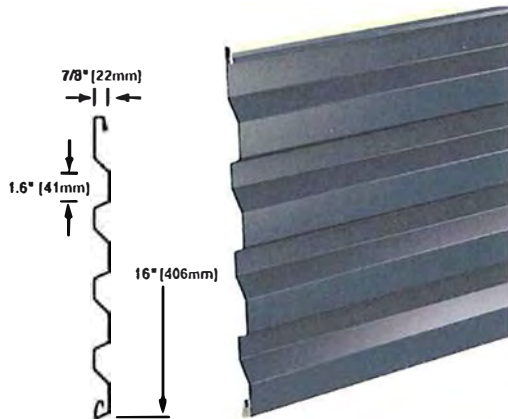
Platinum Brick. Interstate Platinum: Location: Water St. Side

<https://interstatebrick.com/brick-color/>



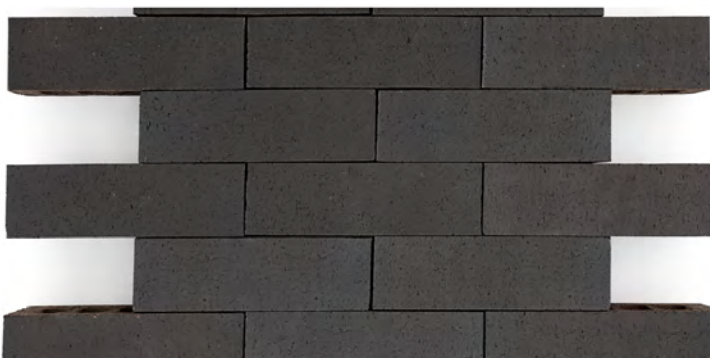
Corrugated Metal Siding : Concept Series[®] Concealed Fastener Panels CS-660. Location: Riverside and side of buildings. Oriented Horizontally

http://www.centriperformance.com/products/wall/profile_series_metal_panels/concept_series_concealed_fastener/hor/660.aspx



Masonry Base: Interstate Super Emperor 8"x16". size. Color: Black Ice. Location: Lower two levels, River side and side of buildings.

https://interstatebrick.com/brick-color/?mgi_298=9668/black-ice



Cable Railing: Nexan Cable Rail, color Bronze: Location: River walk, balconies, Holton St. Access.

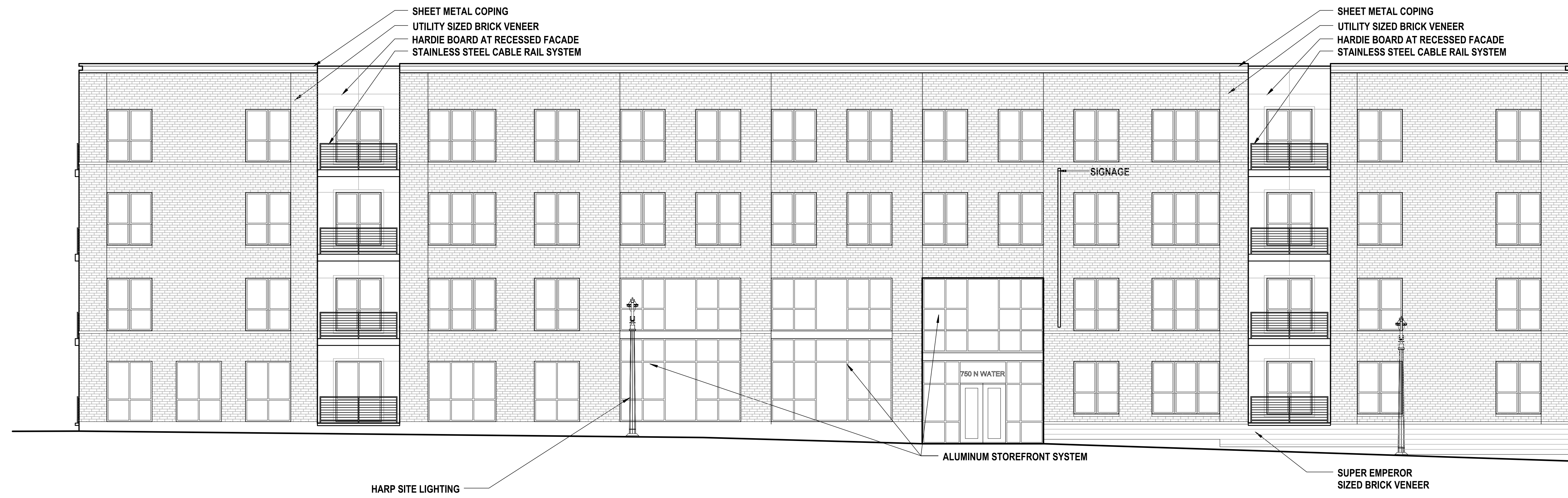
<http://www.nexaninc.com/products/aluminum-railing/cable-railings>



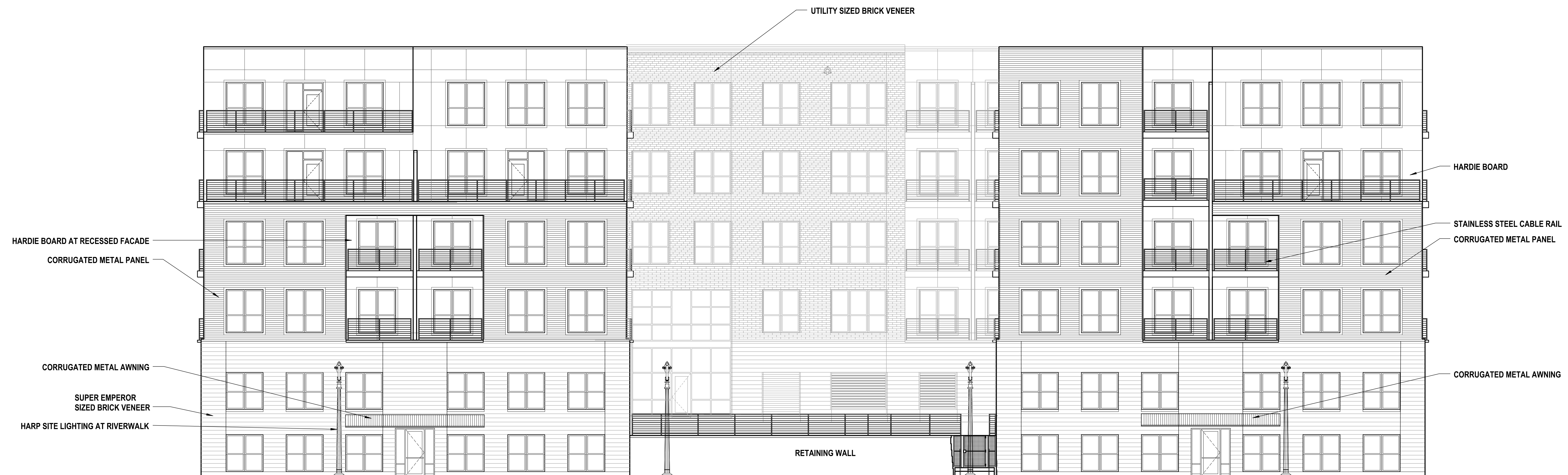
Window Glazing: Film applied 25% acid etch window glazing. Location: Garage windows riverside.



Accent Colored Cement Board: Location: Insets and Balconies.



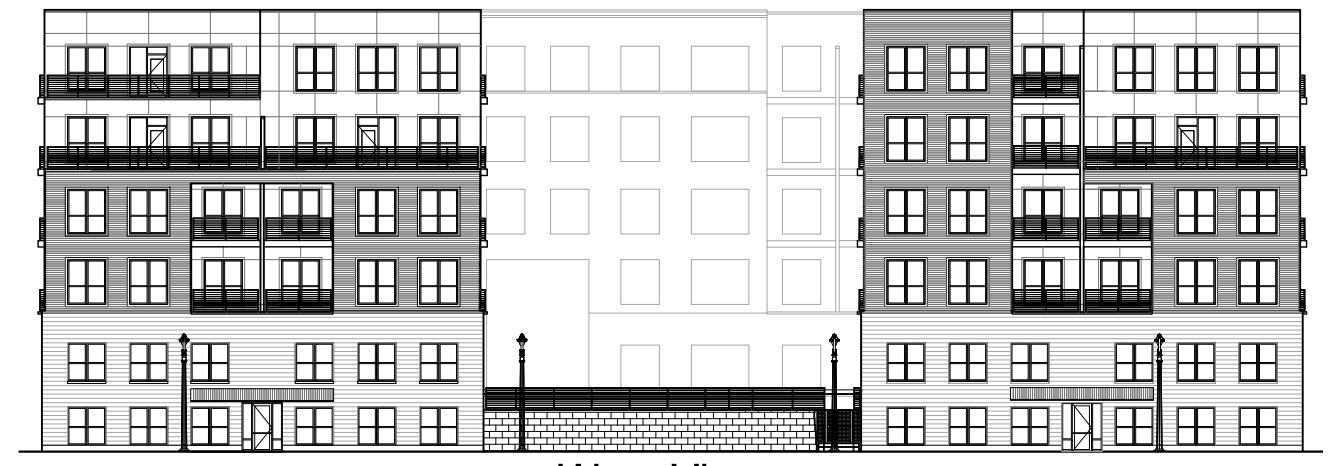
D2 BUILDING 3 - EAST ELEVATION
SCALE: 1/8" = 1'-0"



F2 BUILDING 3 - WEST ELEVATION
SCALE: 1/8" = 1'-0"



North View



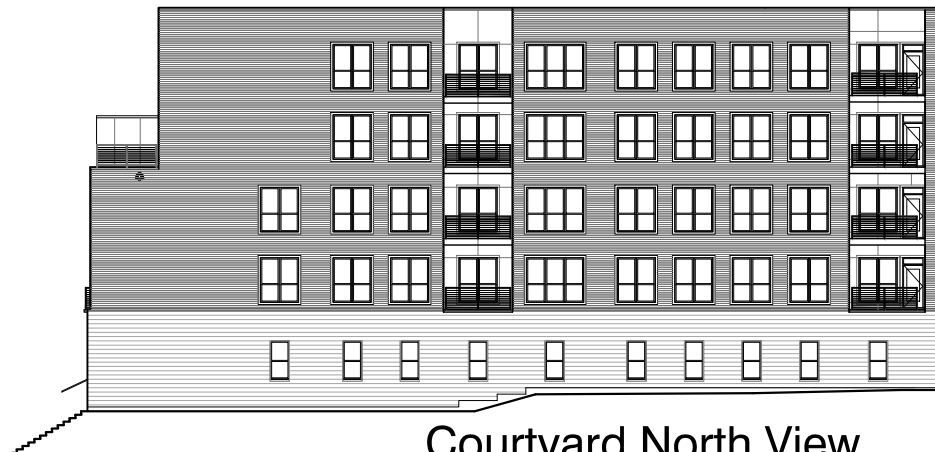
West View



South View



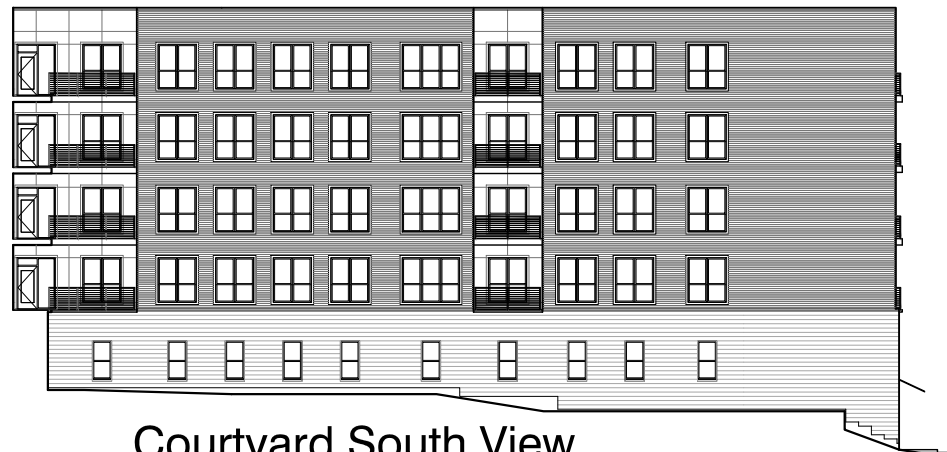
East View



Courtyard North View



Courtyard East View



Courtyard South View

Building 3 Proposed Elevations (add windows, no recesses)



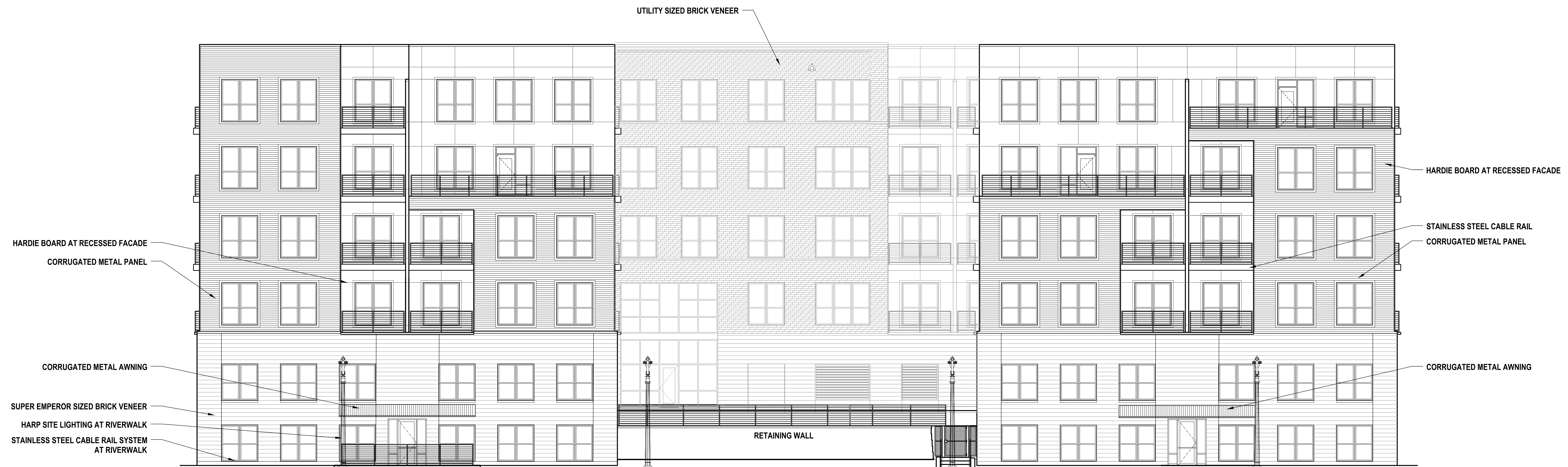
**River House
Apartments**
1781 North Water Street
Milwaukee, WI 53202



ATLANTIC RESIDENTIAL
3500 Lenox Road, Suite 1250
Atlanta, GA 30326



D2 BUILDING 4 - EAST ELEVATION
SCALE: 1/8" = 1'-0"



F2 BUILDING 4 - WEST ELEVATION
SCALE: 1/8" = 1'-0"

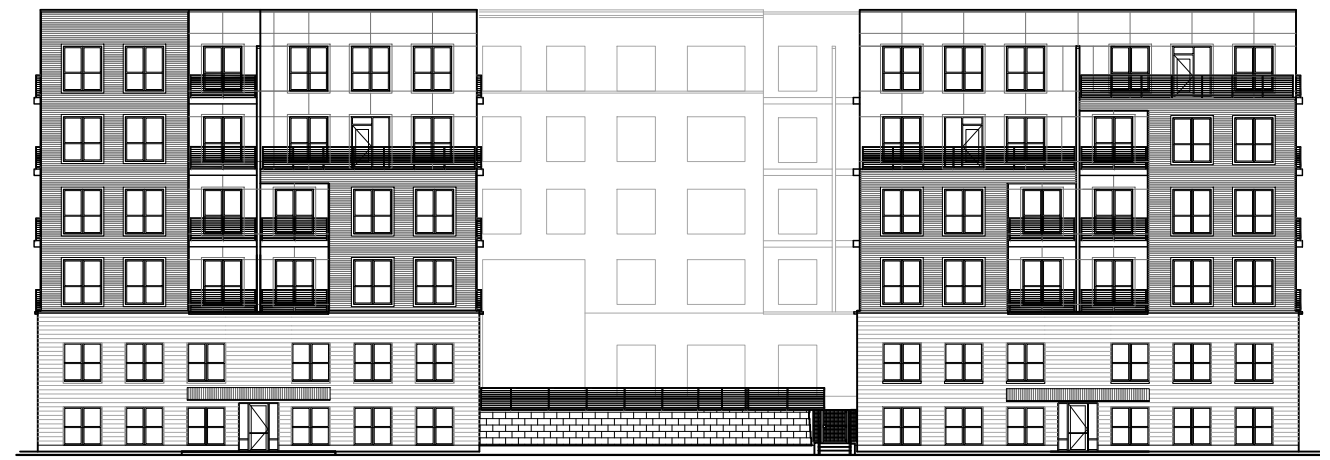
date SEPTEMBER 22, 2022

Job No. **14027B**

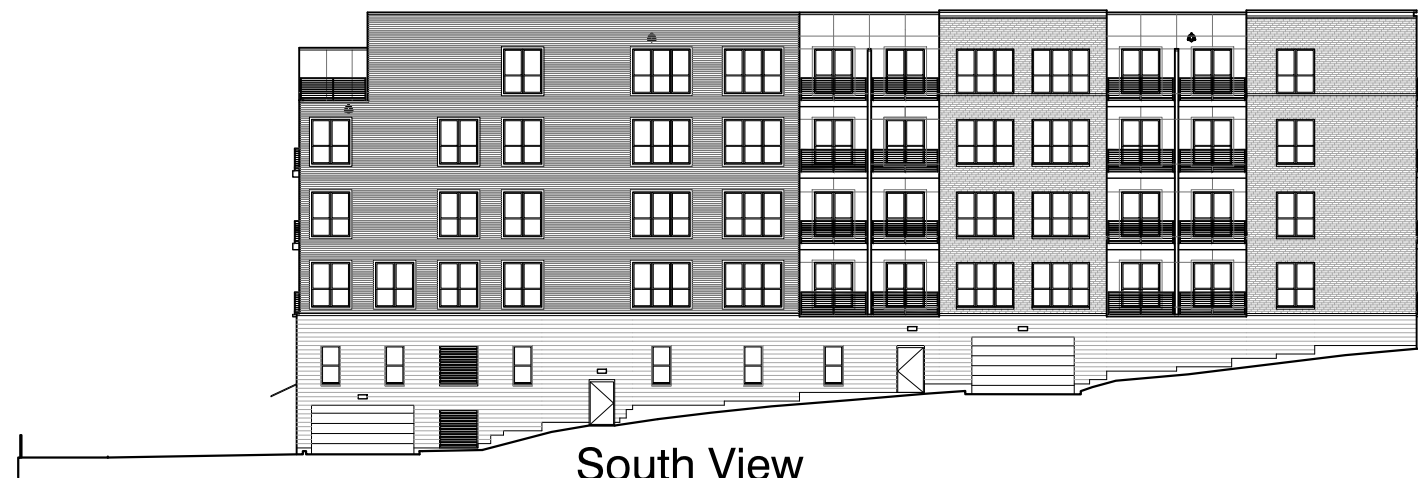
Sheet No. **A409**



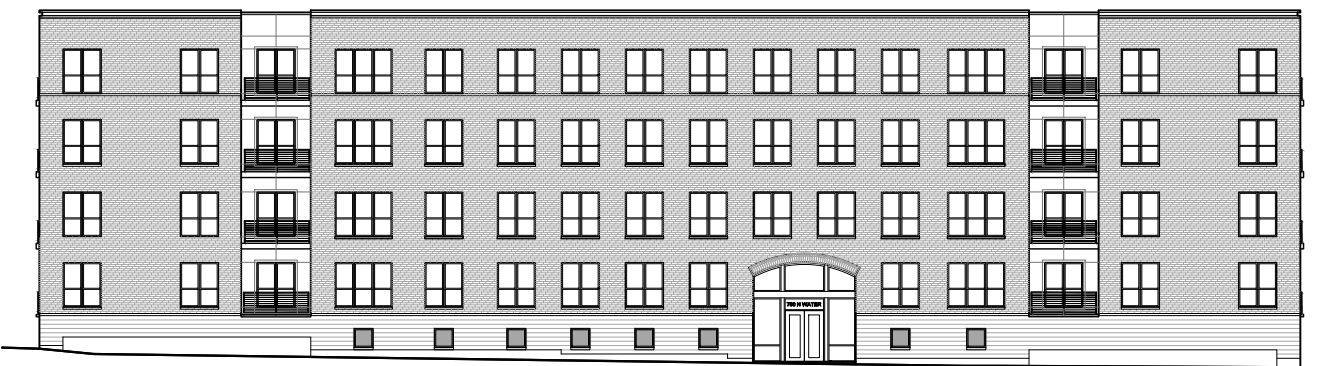
North View



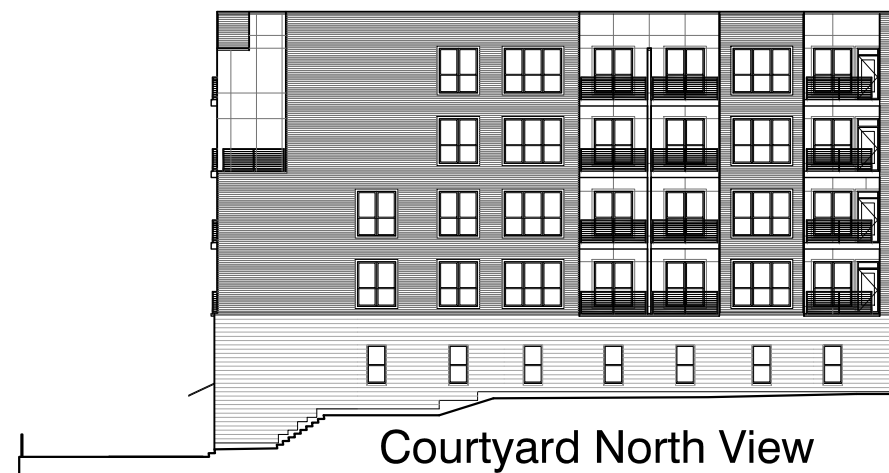
West View



South View



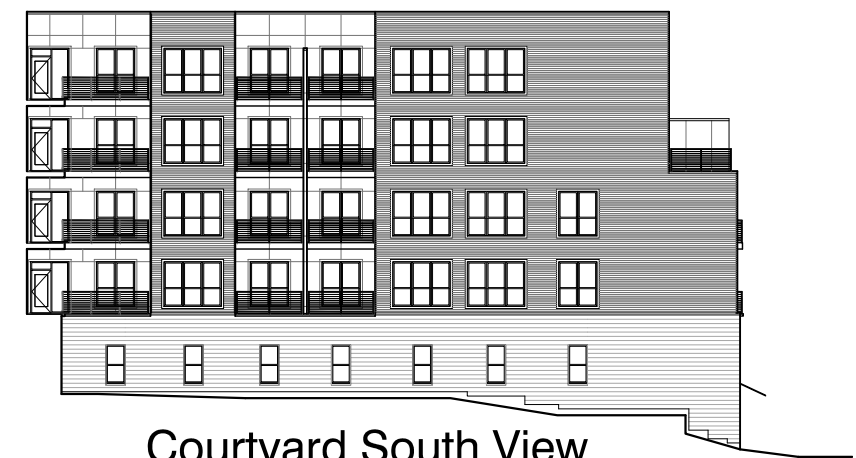
East View



Courtyard North View

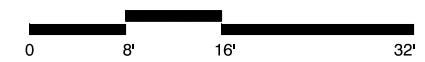


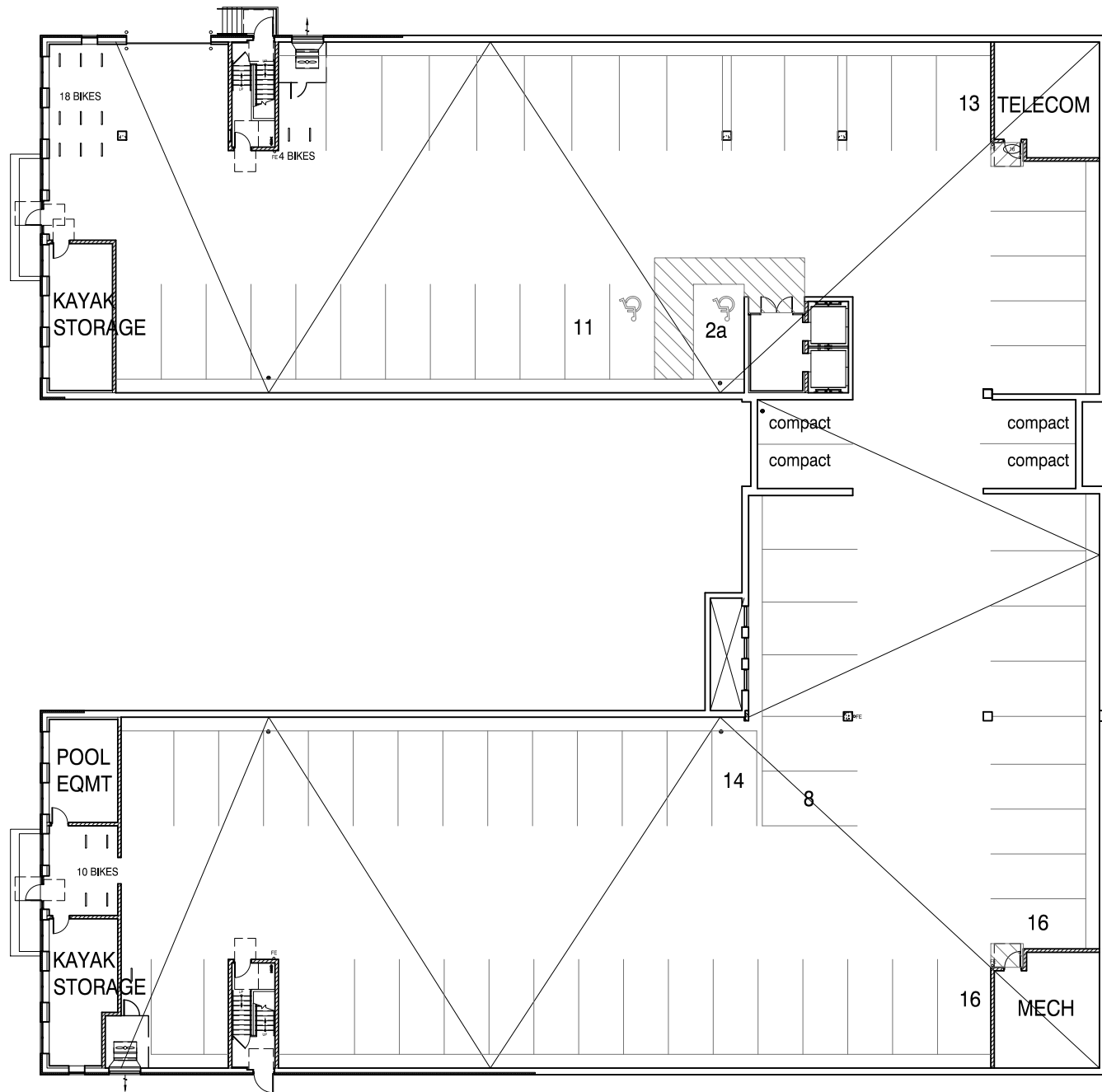
Courtyard East View



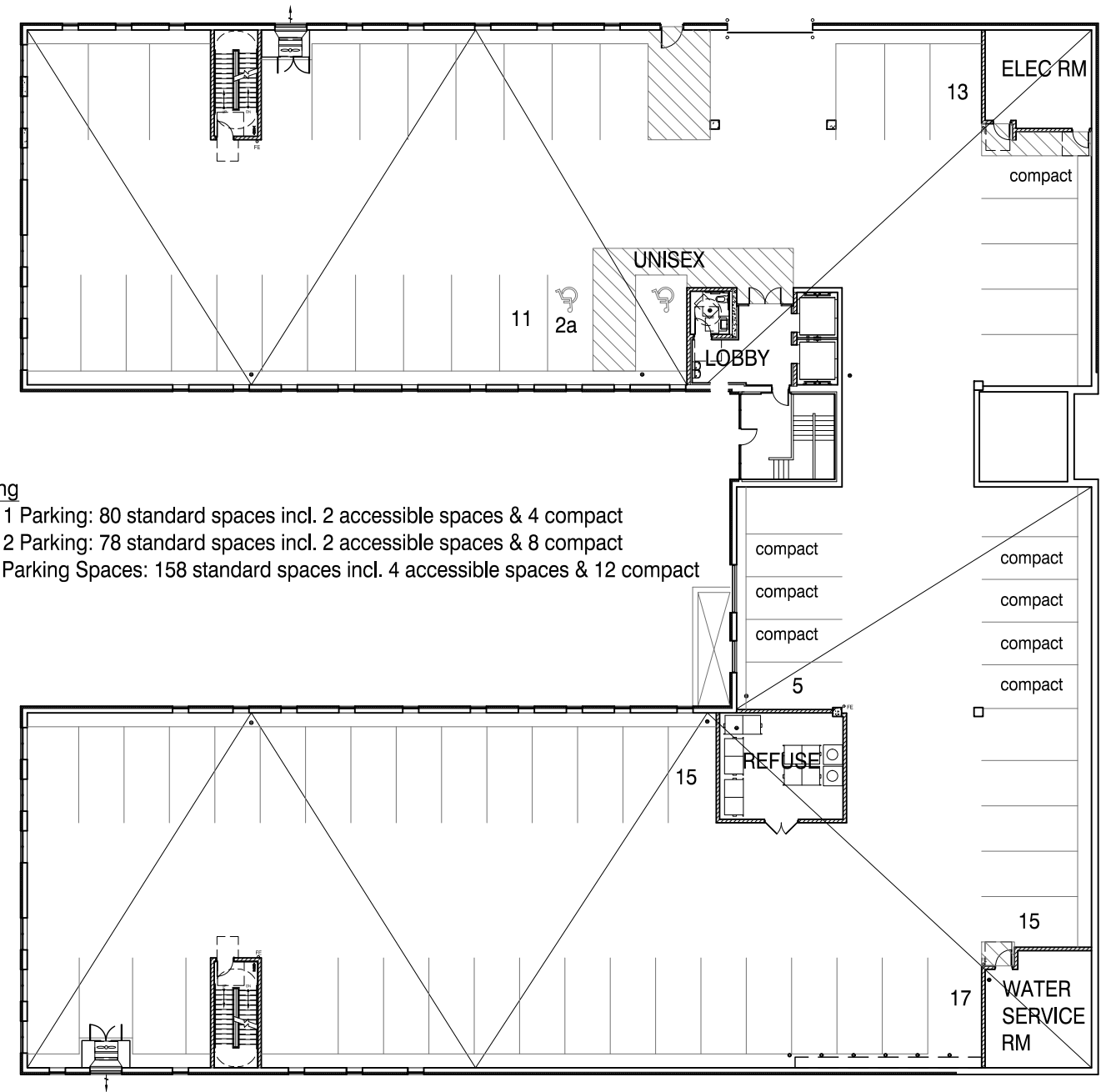
Courtyard South View

Building 4 Proposed Elevations (add windows, no recesses)





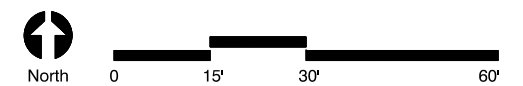
Level 1

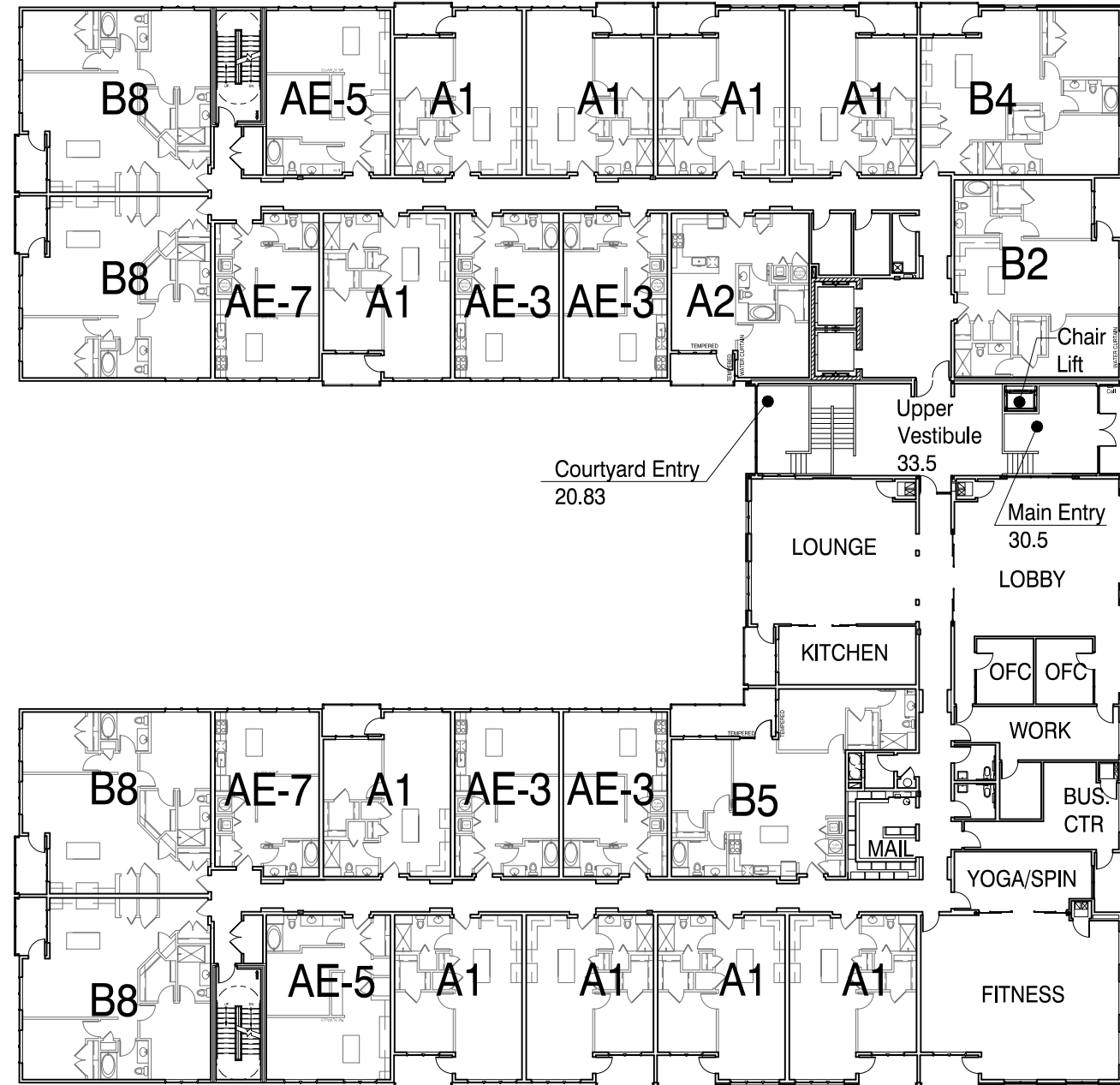


Level 2

Parking
 Level 1 Parking: 80 standard spaces incl. 2 accessible spaces & 4 compact
 Level 2 Parking: 78 standard spaces incl. 2 accessible spaces & 8 compact
 Total Parking Spaces: 158 standard spaces incl. 4 accessible spaces & 12 compact

Proposed Building 3 - Levels 1 and 2



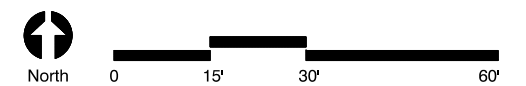


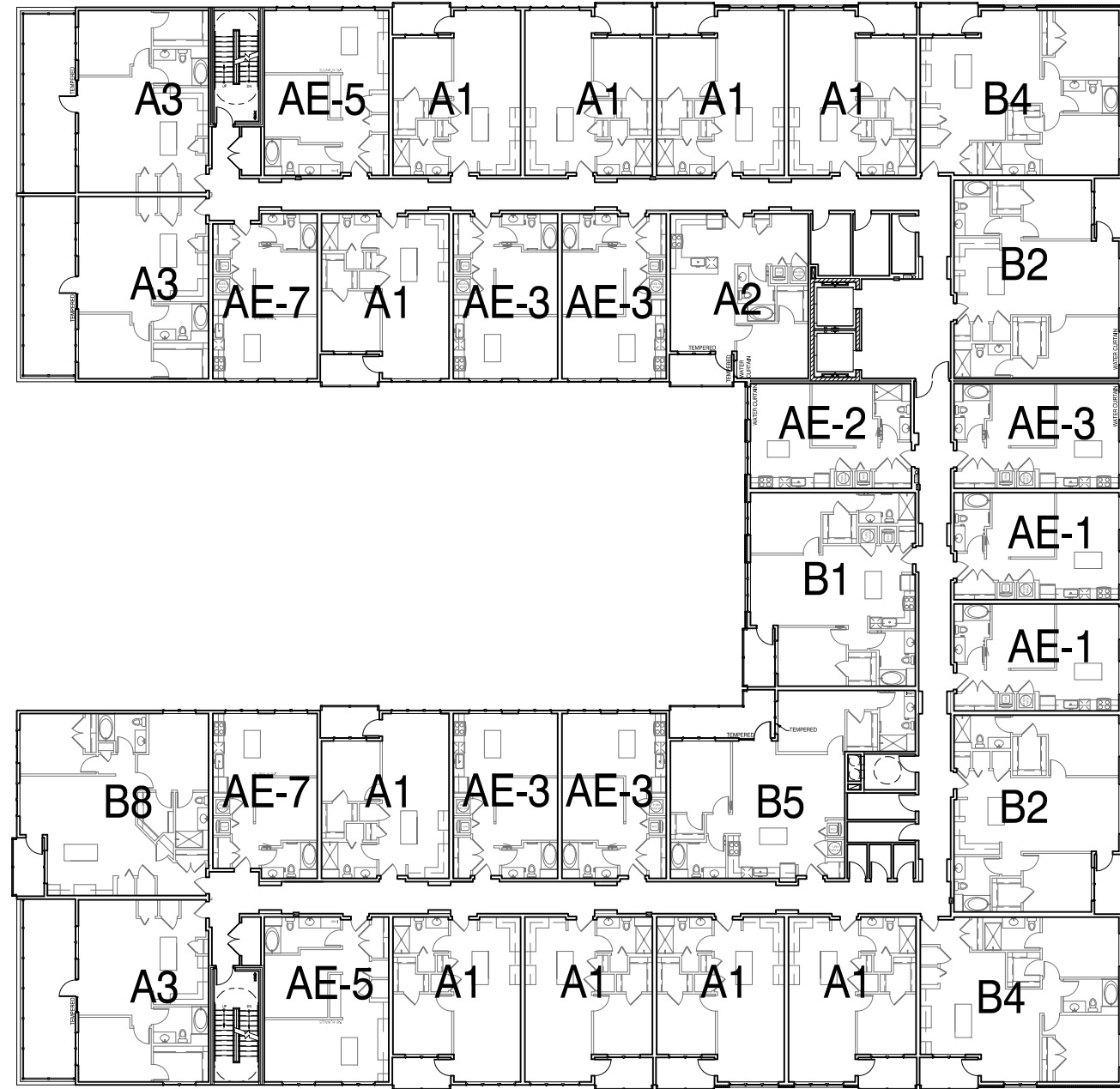
Level 3



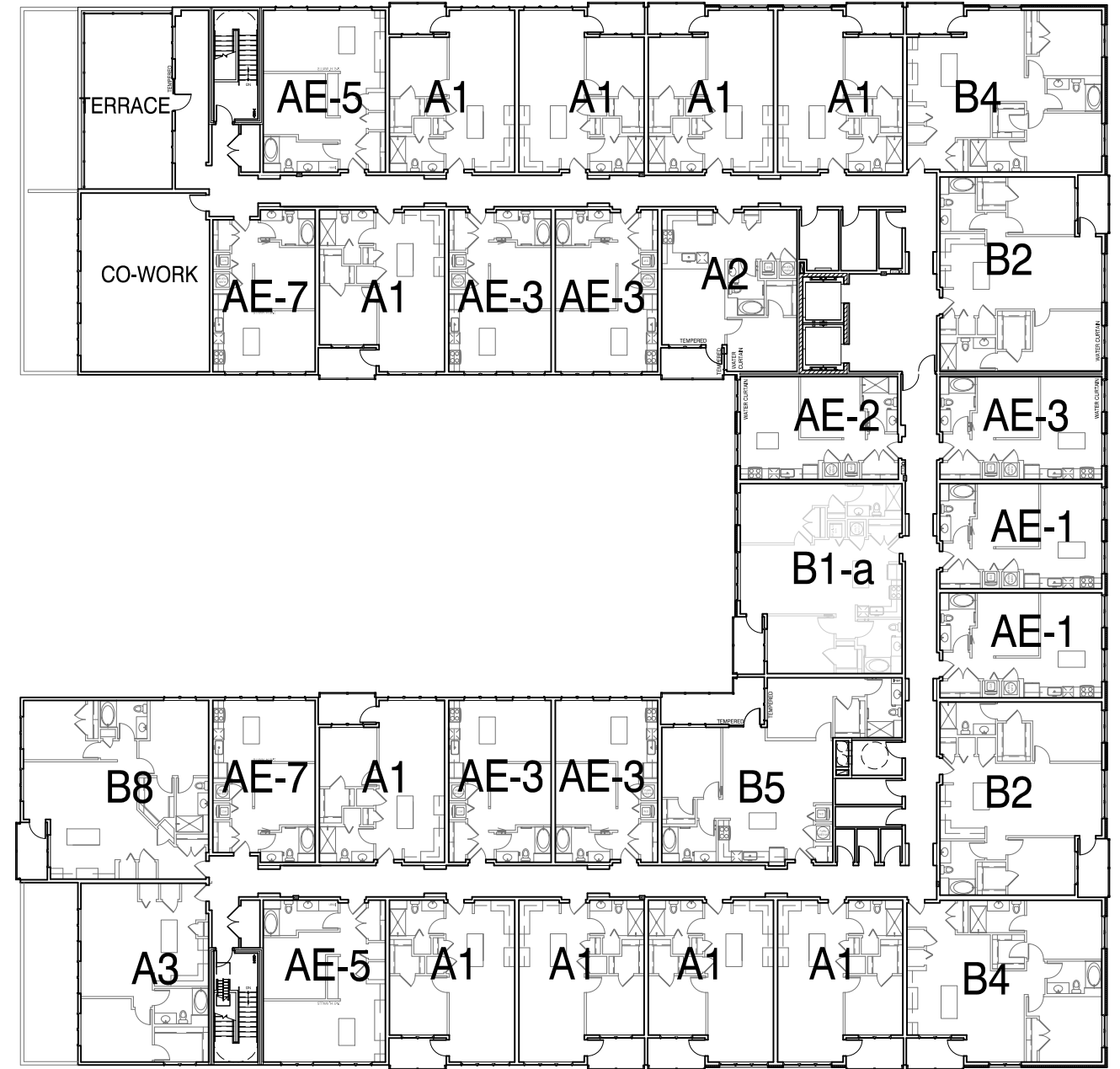
Level 4

Proposed Building 3 - Levels 3 and 4



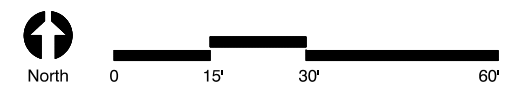


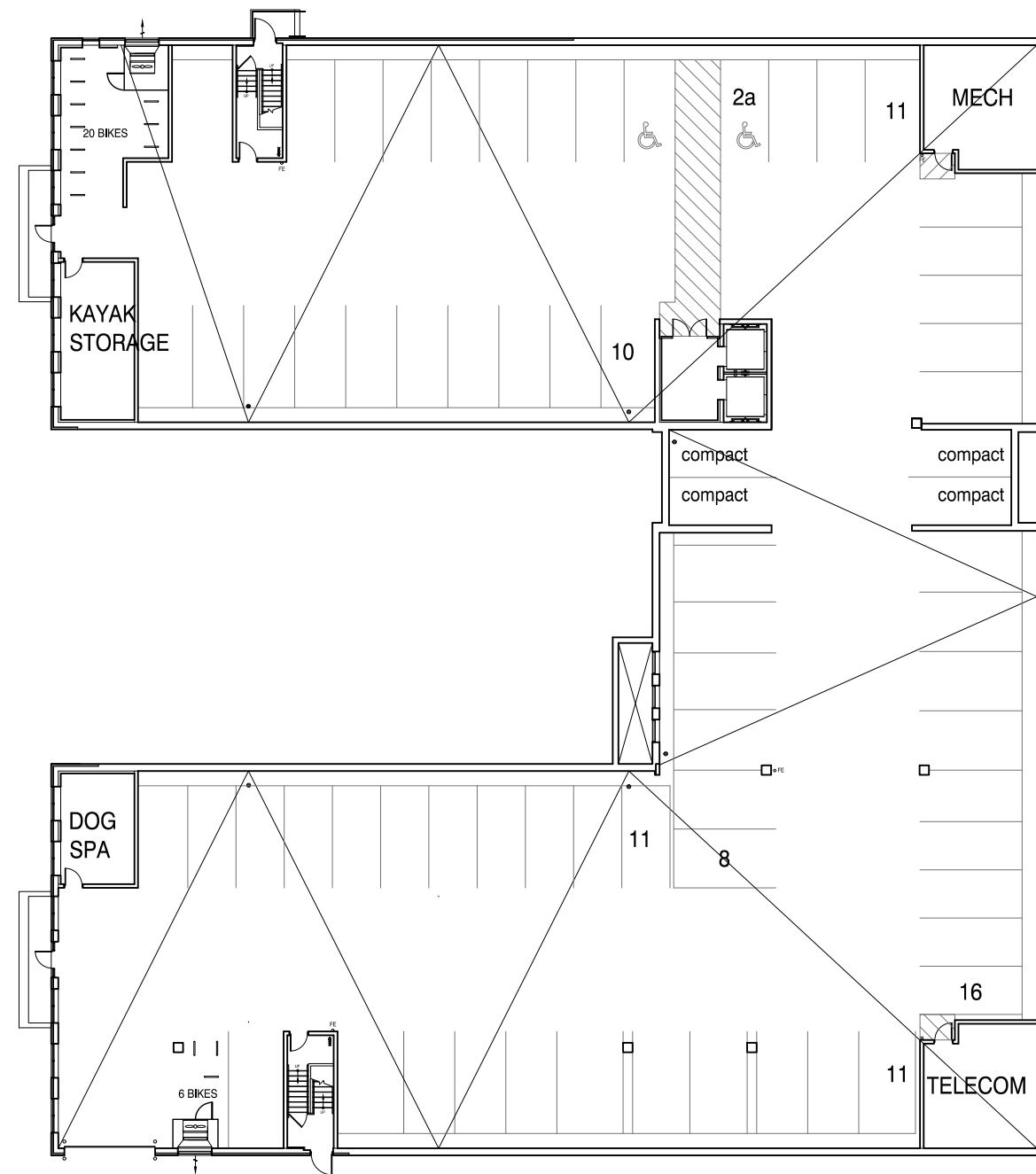
Level 5



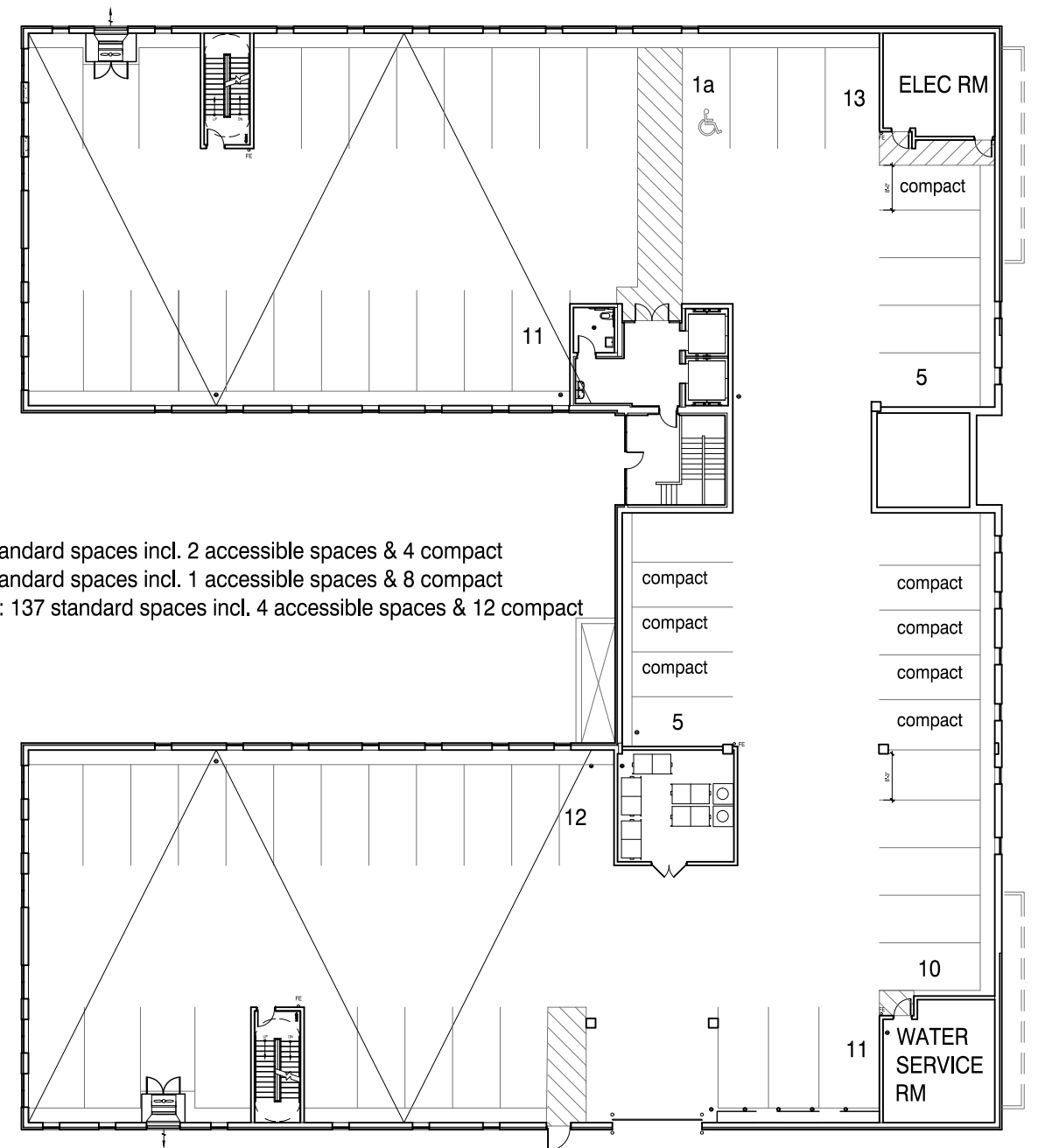
Level 6

Building 3 - Levels 5 and 6





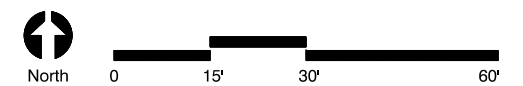
Level 1

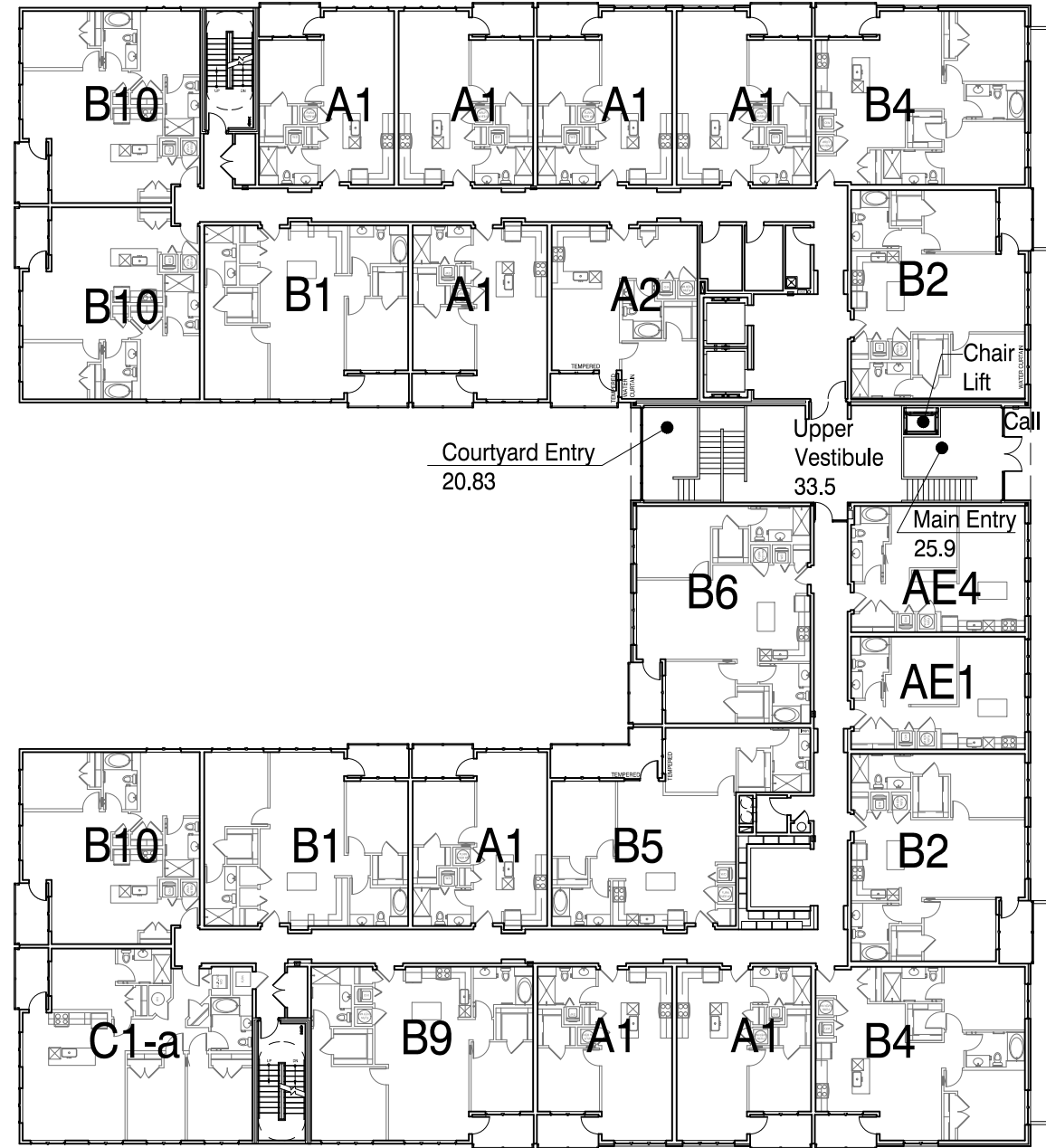


Level 2

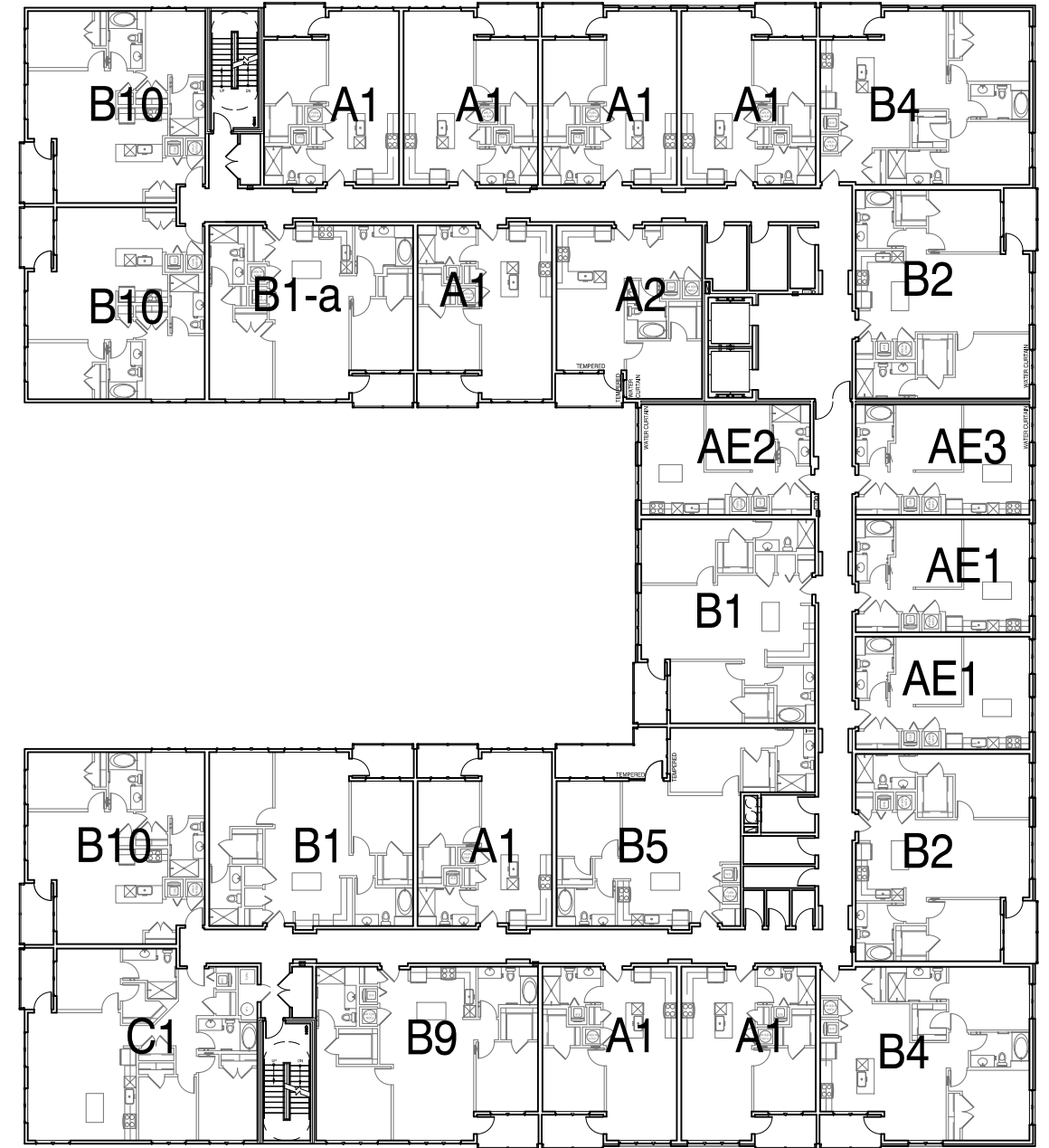
Parking
 Level 1 Parking: 69 standard spaces incl. 2 accessible spaces & 4 compact
 Level 2 Parking: 68 standard spaces incl. 1 accessible spaces & 8 compact
 Total Parking Spaces: 137 standard spaces incl. 4 accessible spaces & 12 compact

Proposed Building 4 - Levels 1 and 2



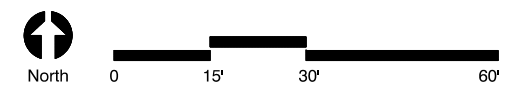


Level 3



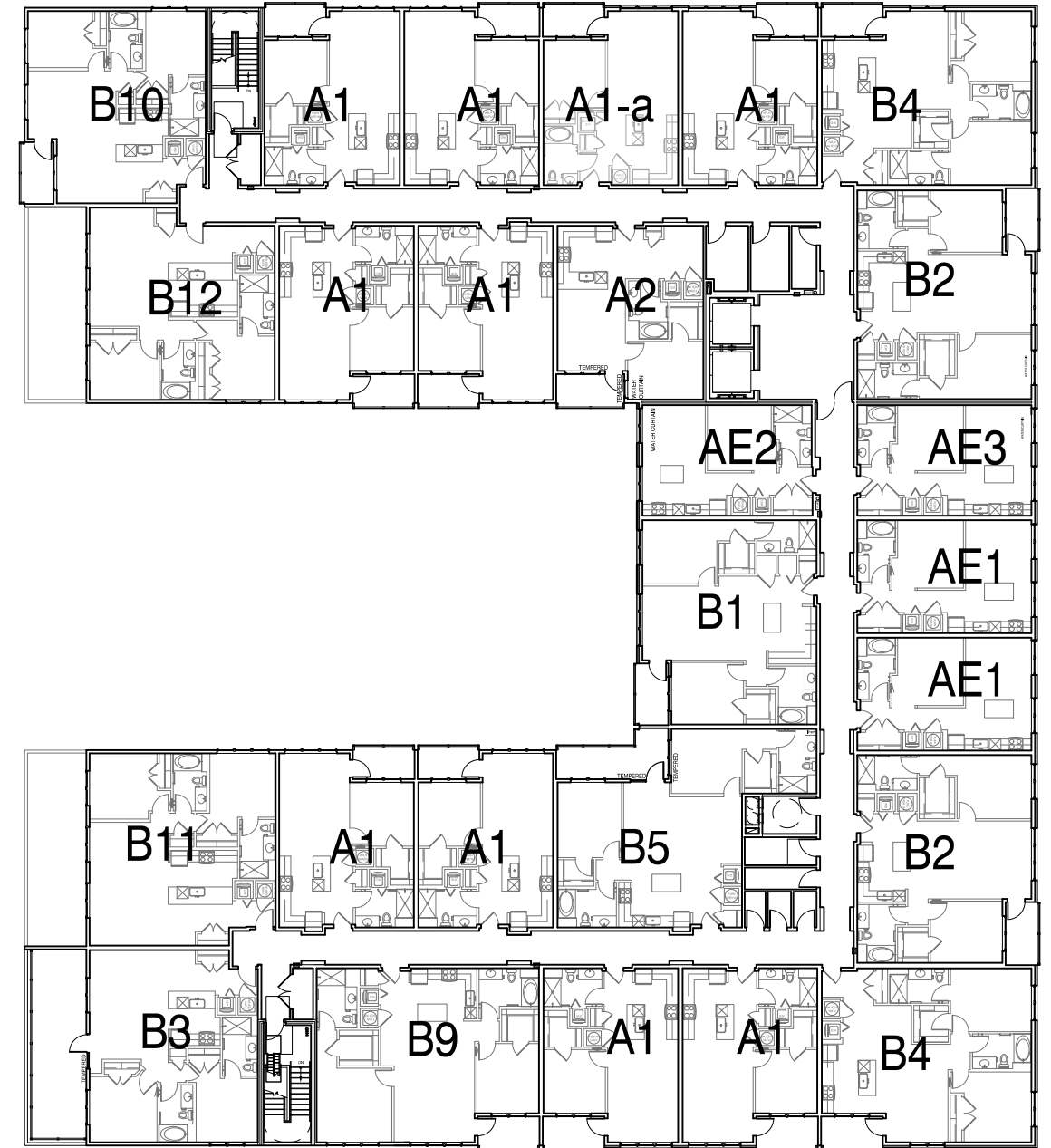
Level 4

Proposed Building 4 - Levels 3 and 4



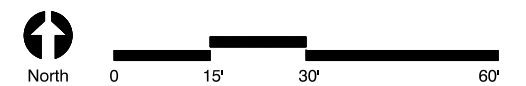


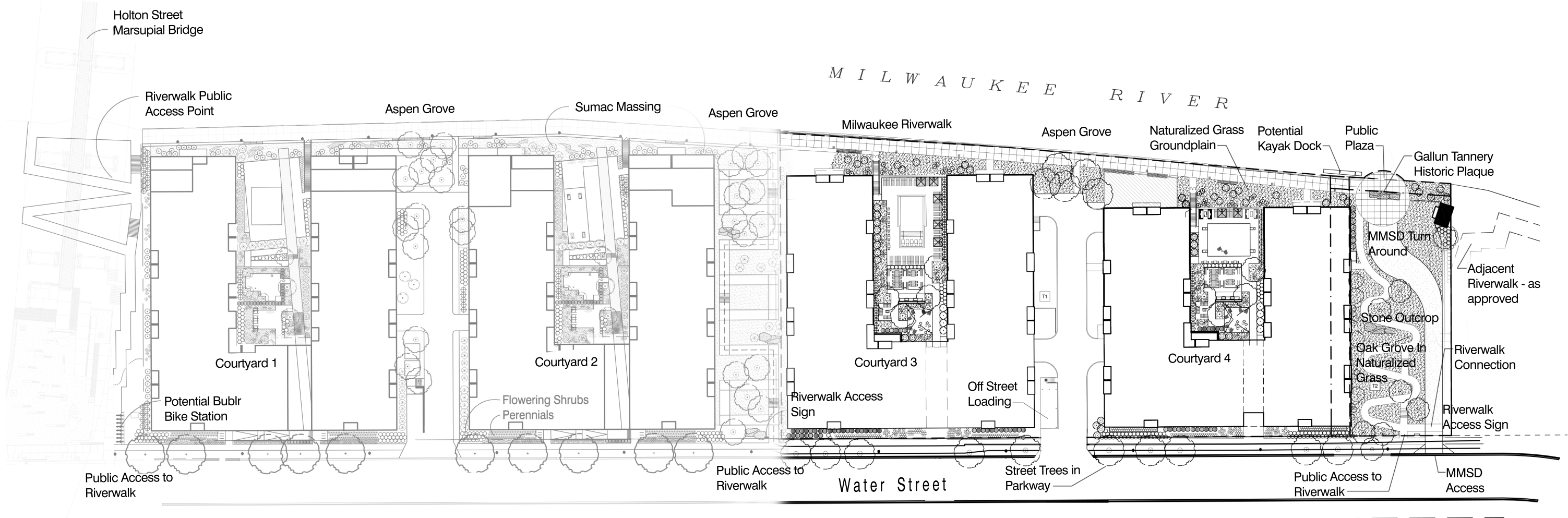
Level 5



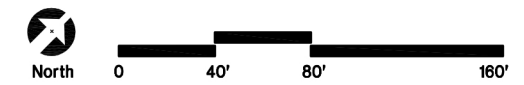
Level 6

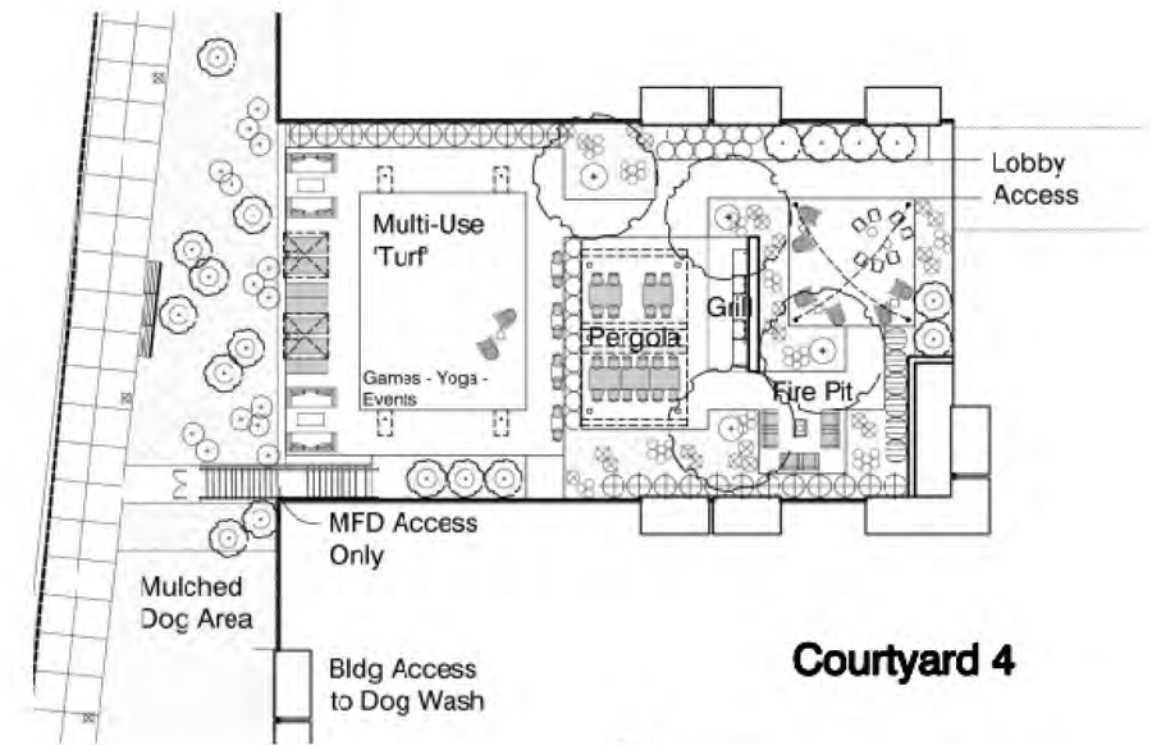
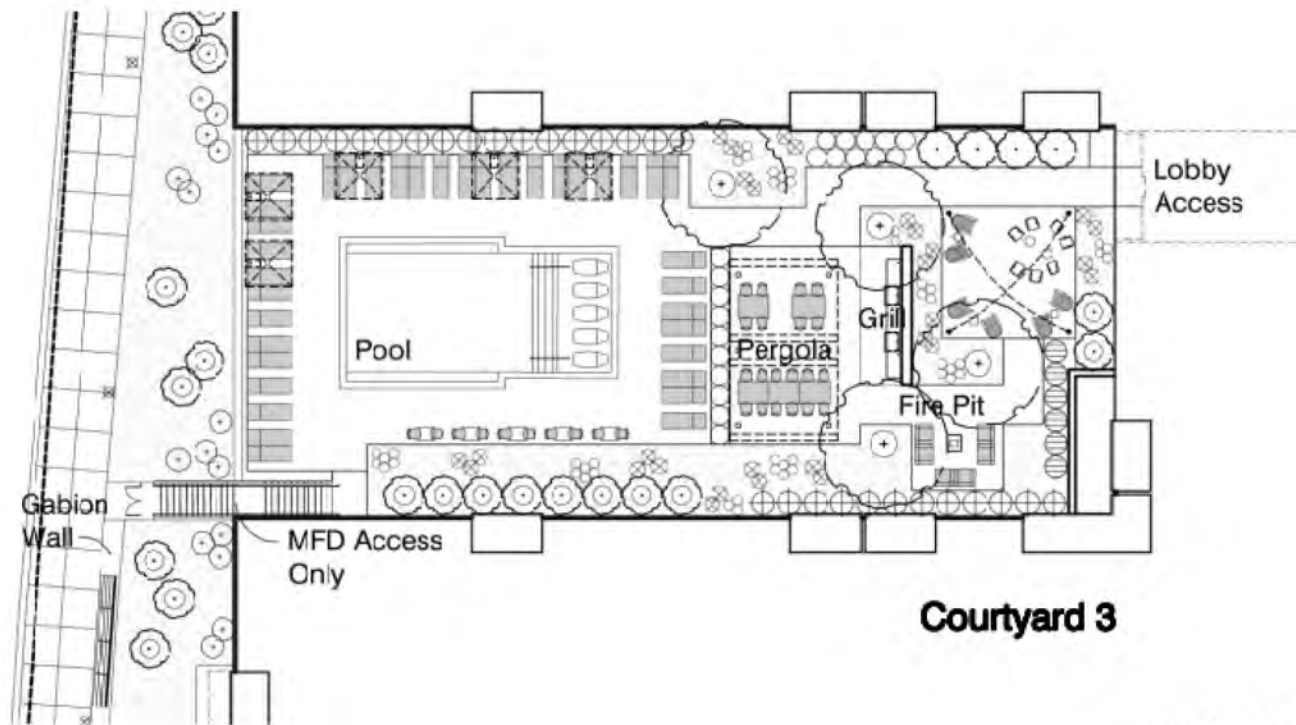
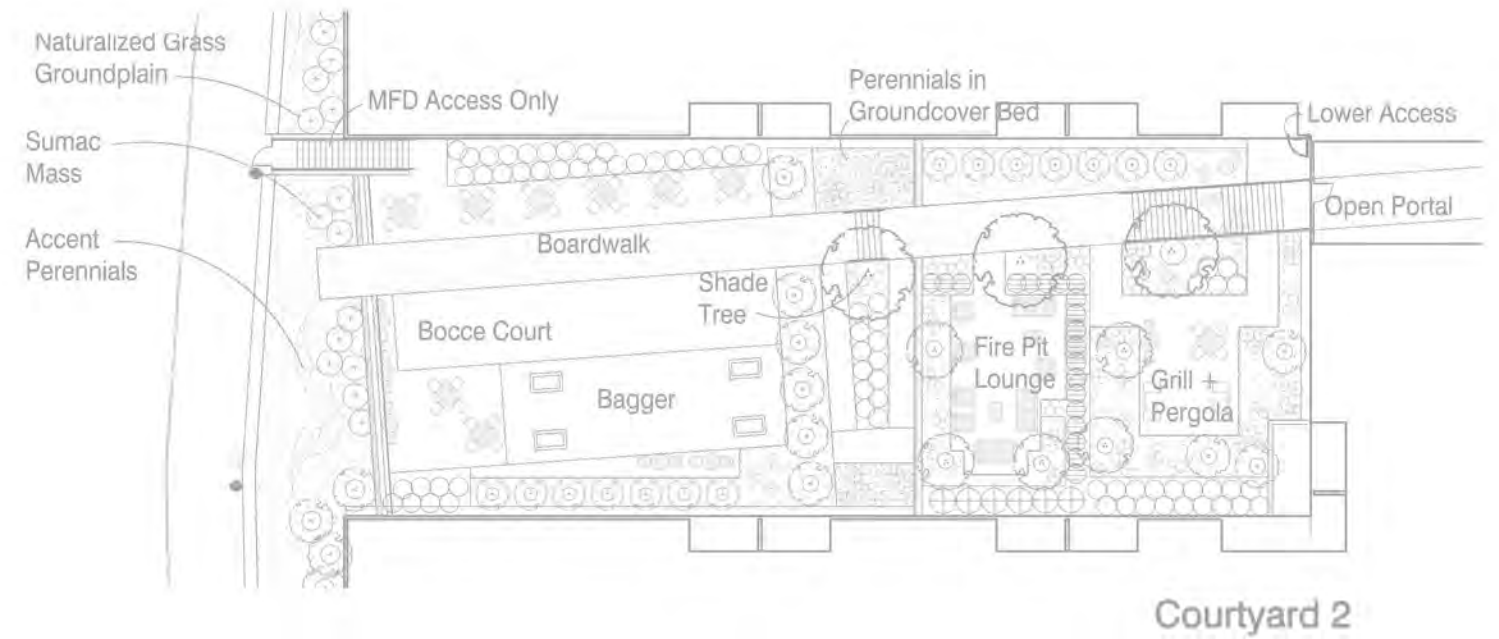
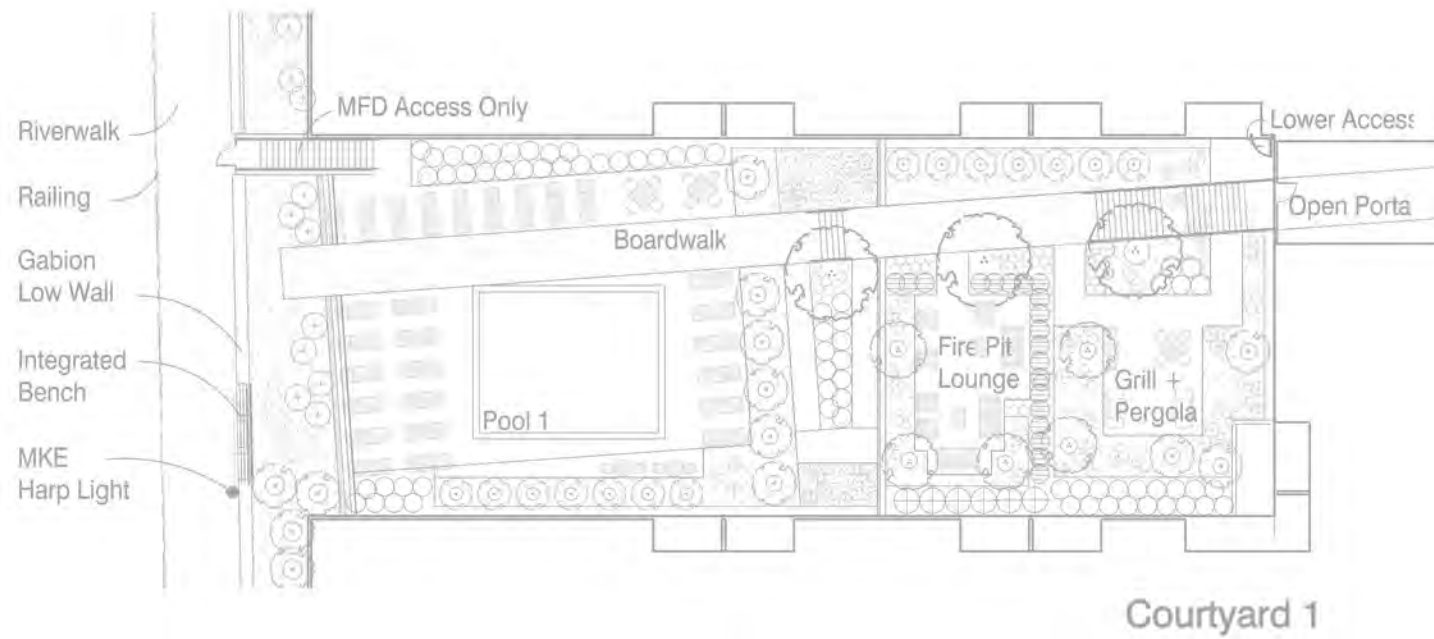
Building 4 - Levels 5 and 6





L1 - Overall Landscape Plan





L3 - Courtyards

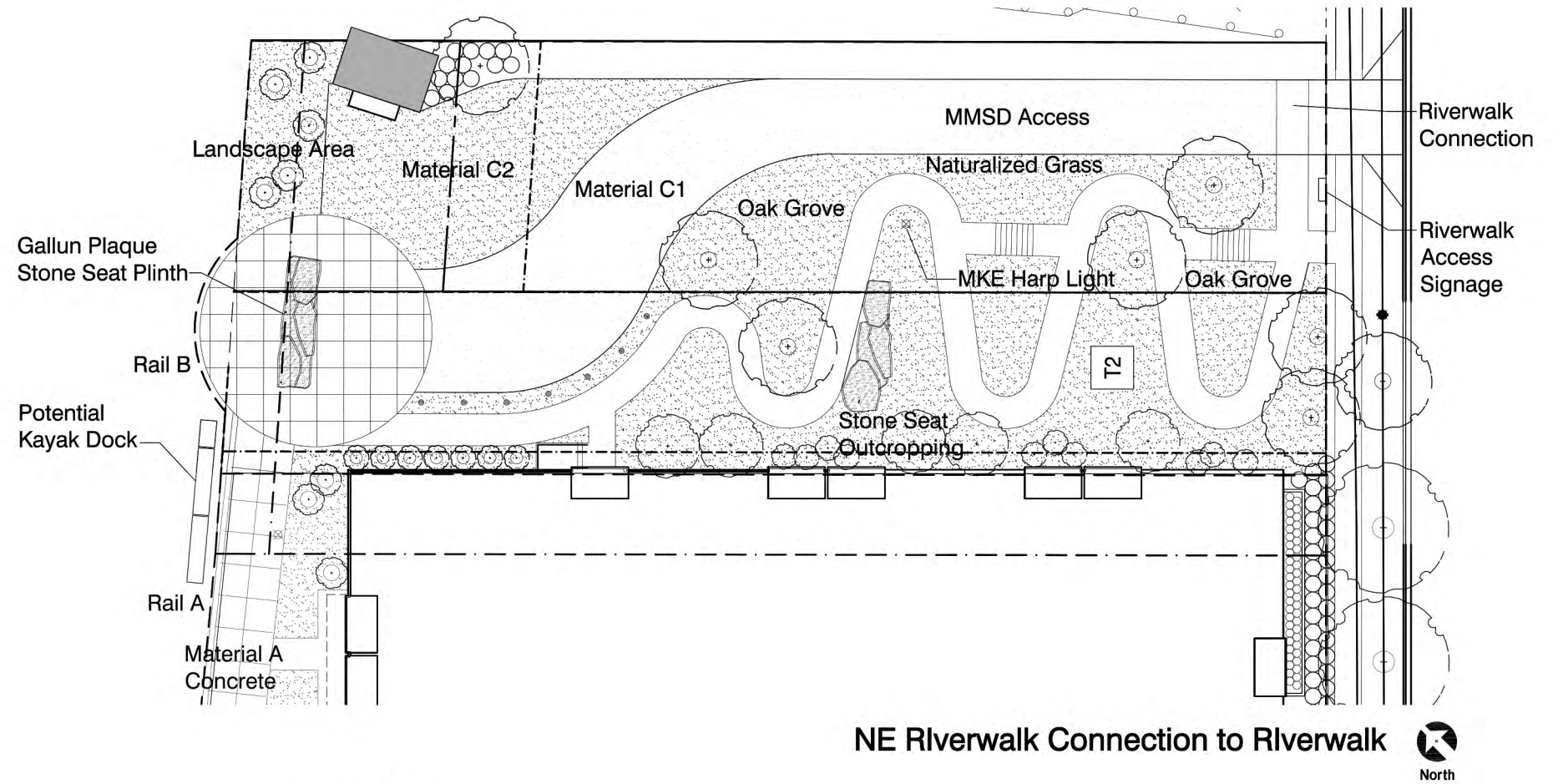




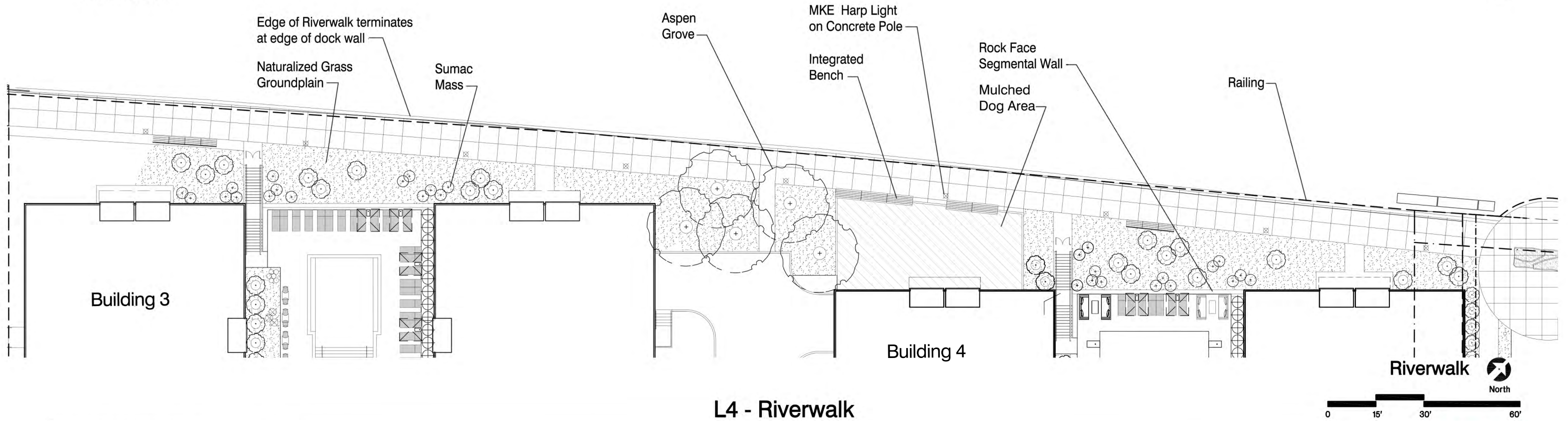
Riverwalk



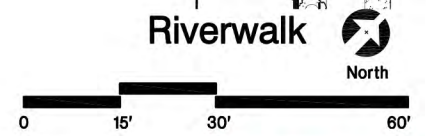
Rail Detail

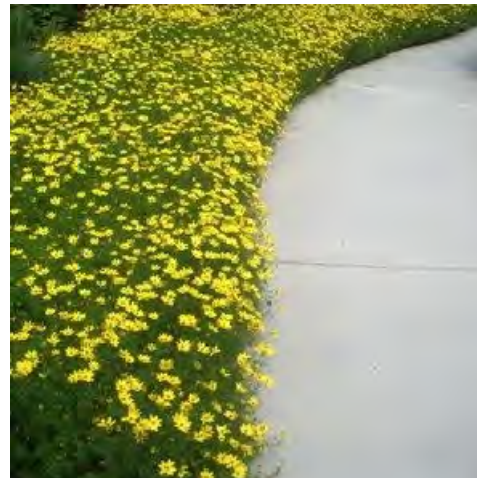


NE Riverwalk Connection to Riverwalk
North



L4 - Riverwalk





Trees + Shrubs

- Boxwood
- Chokeberry
- Hydrangea
- Marmo Maple
- Morton Elm
- Quaking Aspen
- Smooth Sumac
- Staghorn Sumac
- Swamp White Oak
- Viburnum
- Witchhazel

Perennials + Grasses

- Autumn Moor Grass
- Betony
- Brome Sedge
- Fountain Grass
- Little Bluestem
- Ornamental Onion
- Salvia
- Switchgrass
- Tickseed

L5 - Overall Plant Material



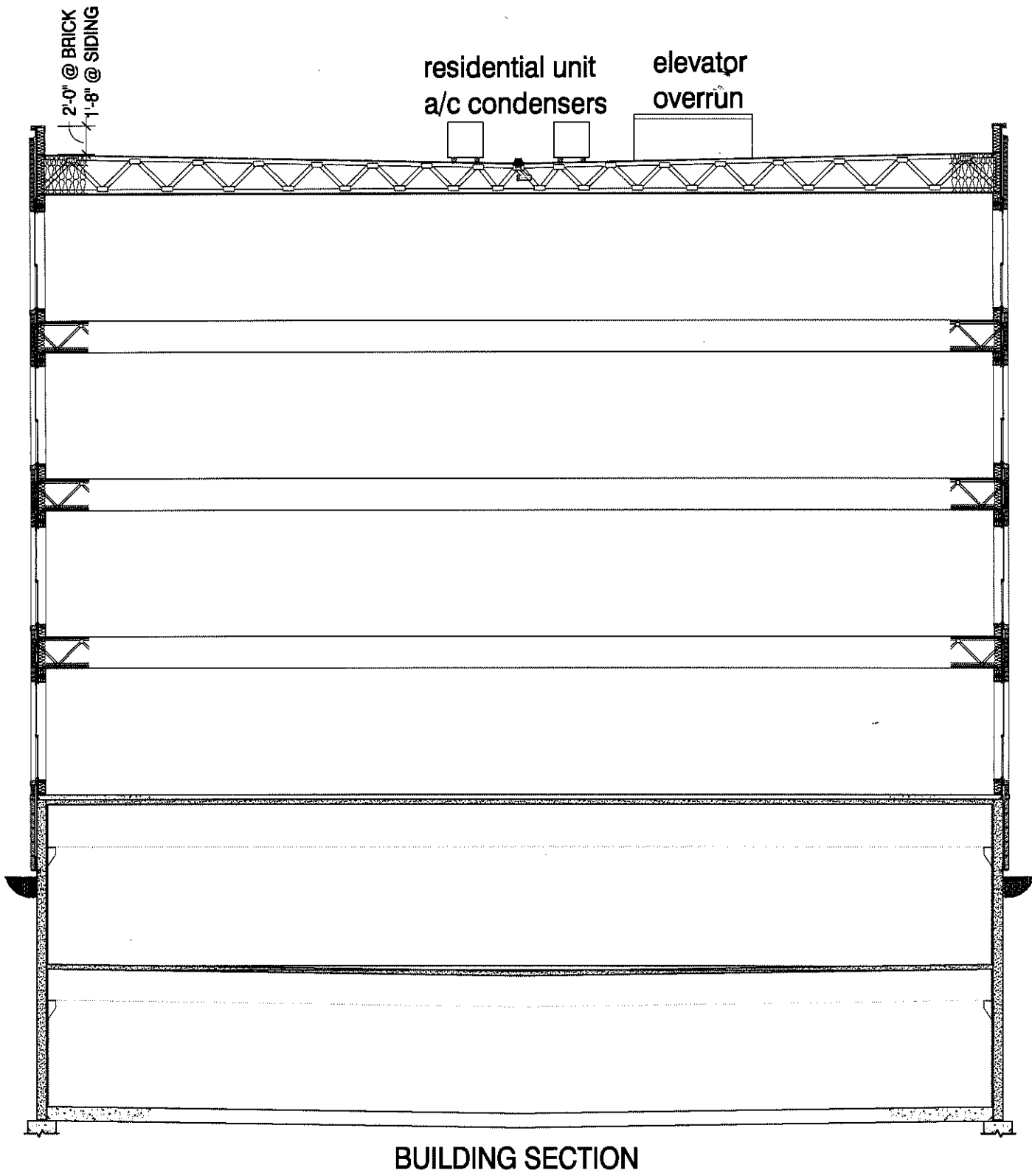
Trees + Shrubs

- American Hornbeam
- Boxwood
- Chokeberry
- Fragrant Sumac
- Ginkgo
- Hydrangea
- Serviceberry
- Sweetspire
- Viburnum
- Witchhazel

Perennials + Grasses

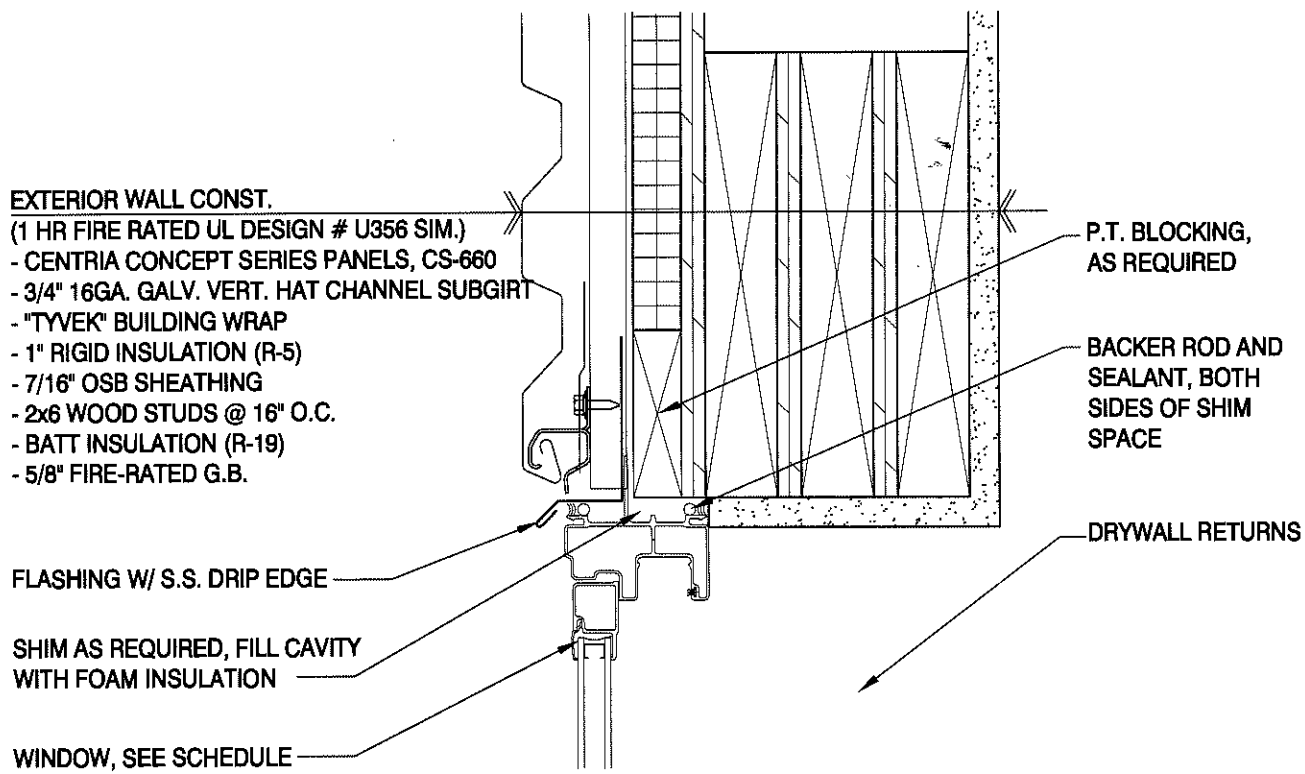
- Betony
- Brome Sedge
- Cranesbill
- Hosta
- Ligularia
- Lady's Mantle
- Lilyturf
- Ornamental Onion
- Ostrich Fern
- Pachysandra
- Salvia
- Sedum
- Tickseed
- Turtlehead

L6 - Courtyard Plant Material

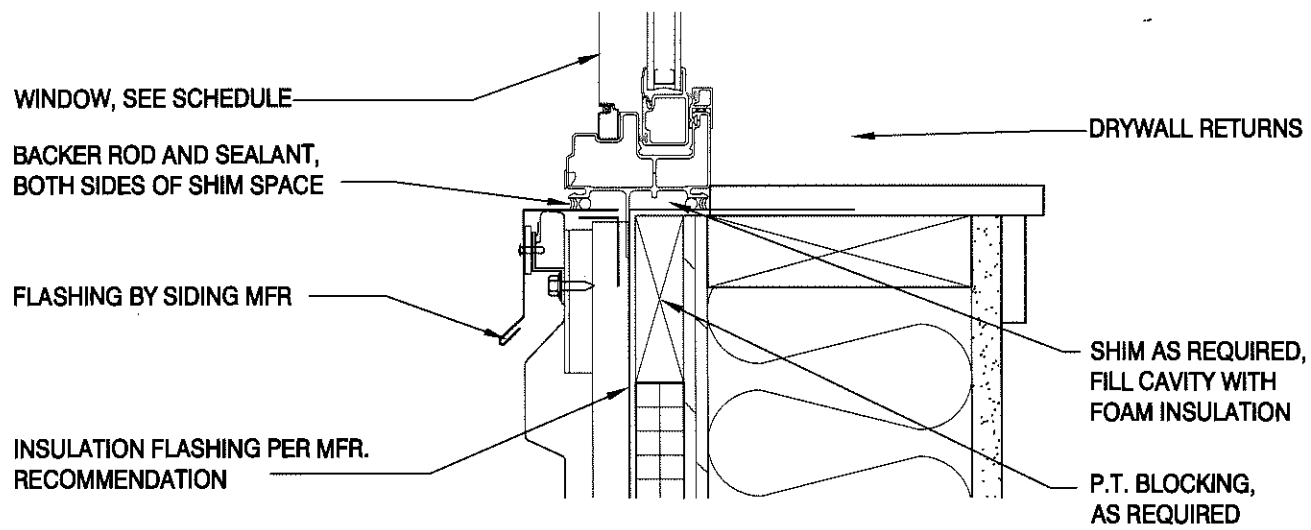


River House Apartments
Atlantic Realty Partners
2015-04-22

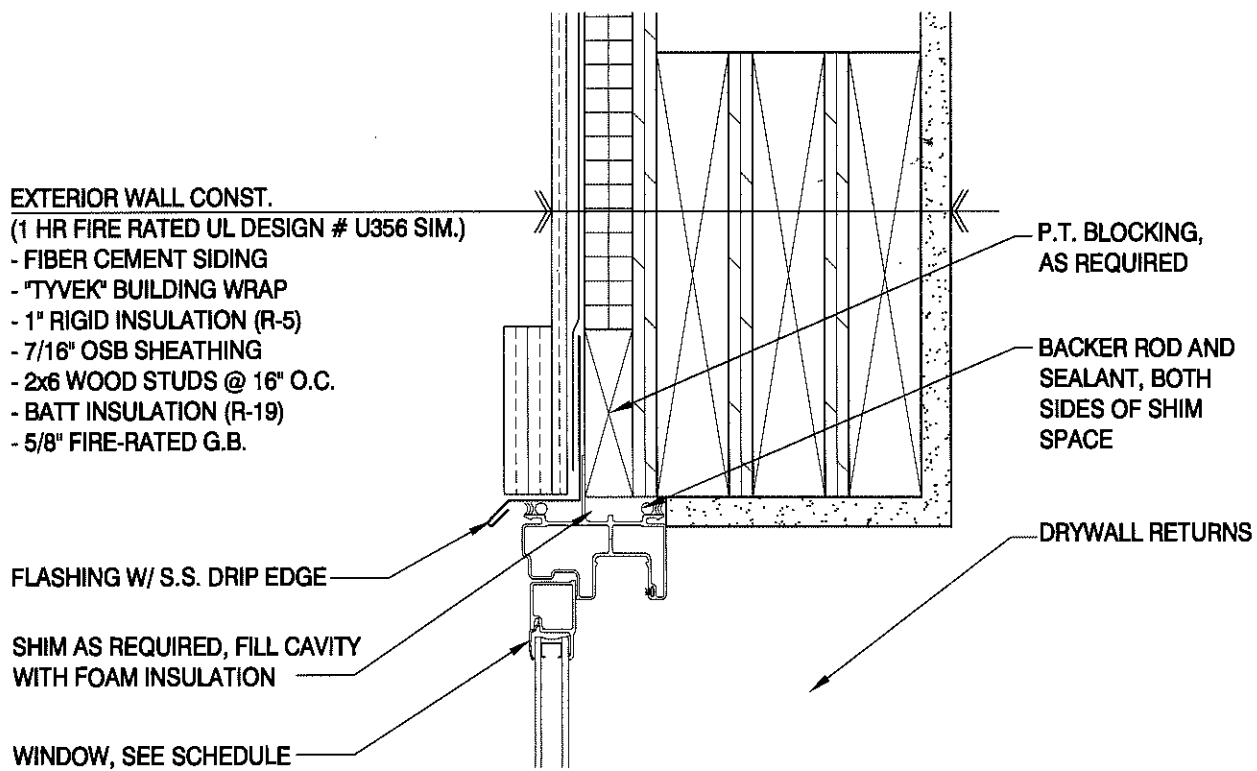
FN 141437
Building Details as of
05-20-15



WINDOW HEAD DETAIL @ METAL SIDING
 SCALE: 3"=1'-0"

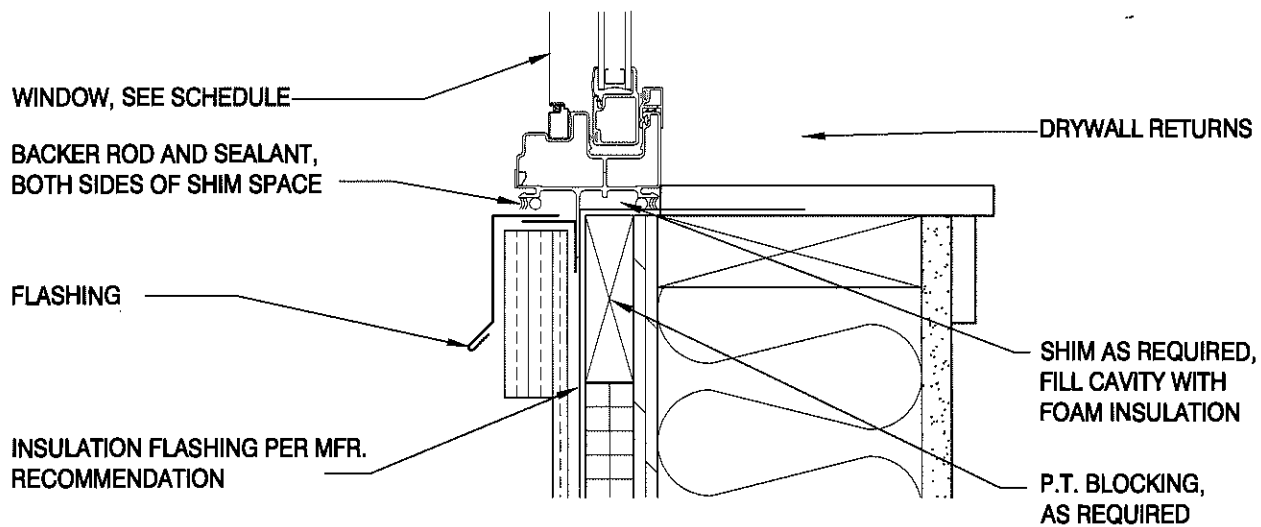


WINDOW SILL DETAIL @ METAL SIDING
 SCALE: 3"=1'-0"



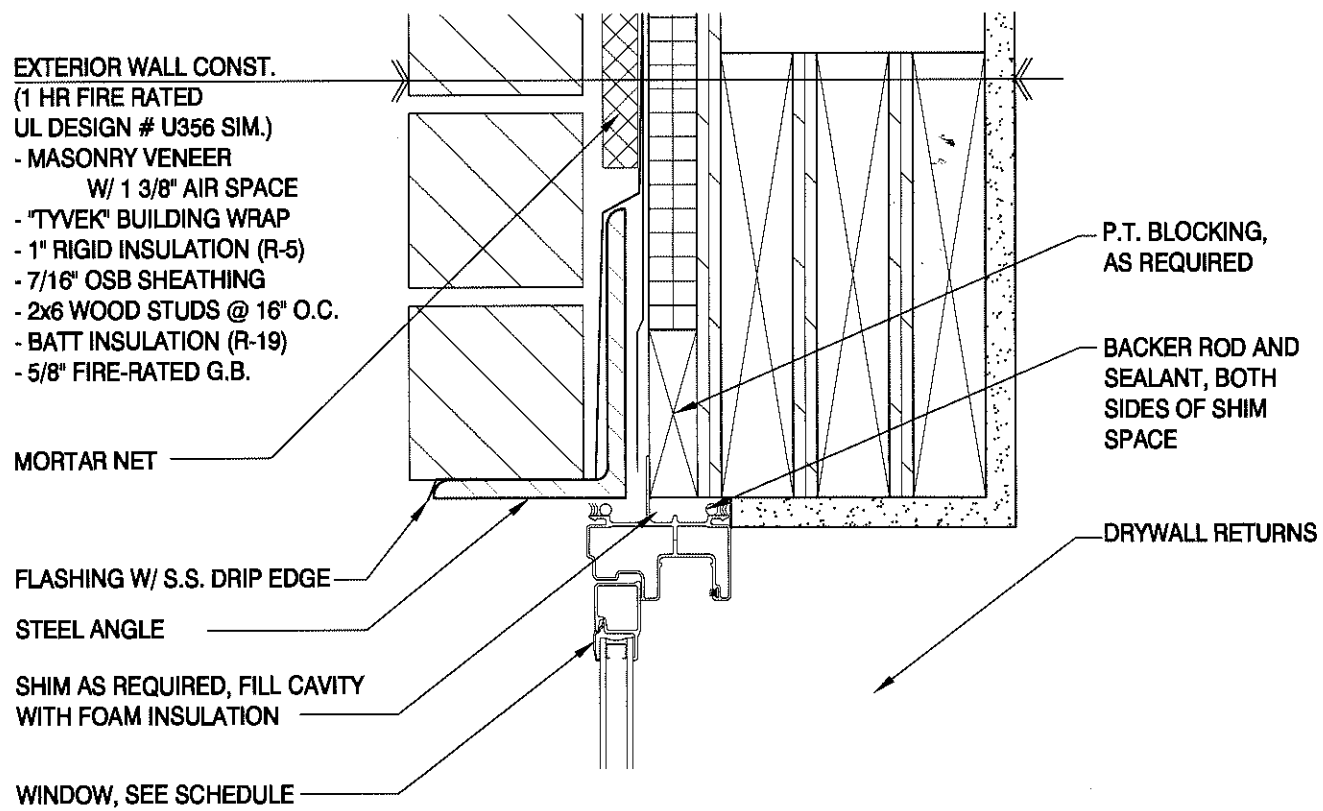
WINDOW HEAD DETAIL @ FIBER CEMENT

SCALE: 3"=1'-0"

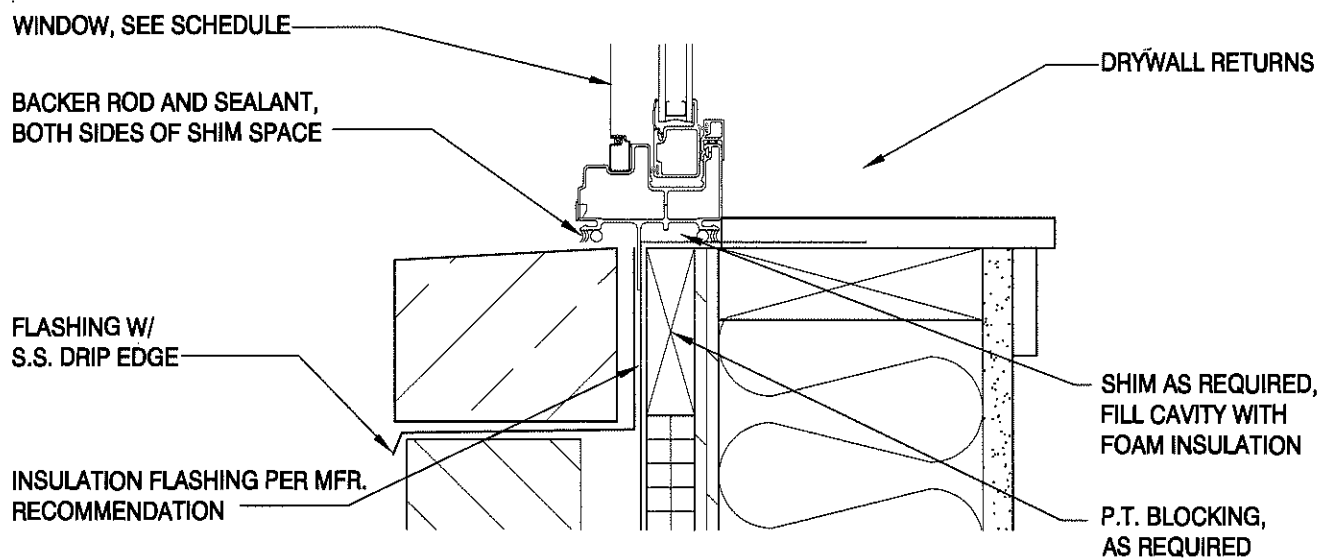


WINDOW SILL DETAIL @ FIBER CEMENT

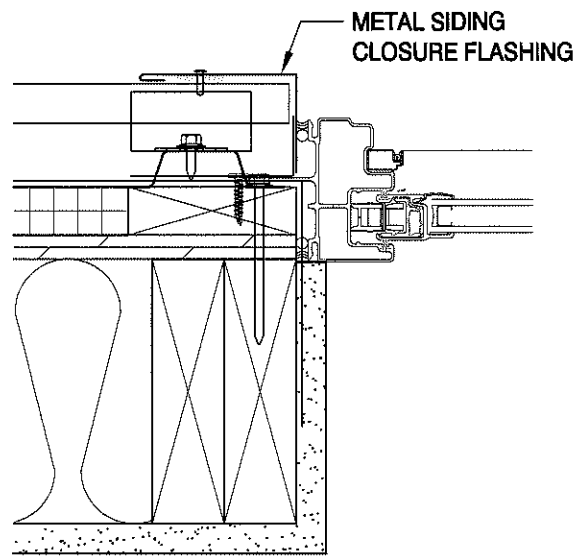
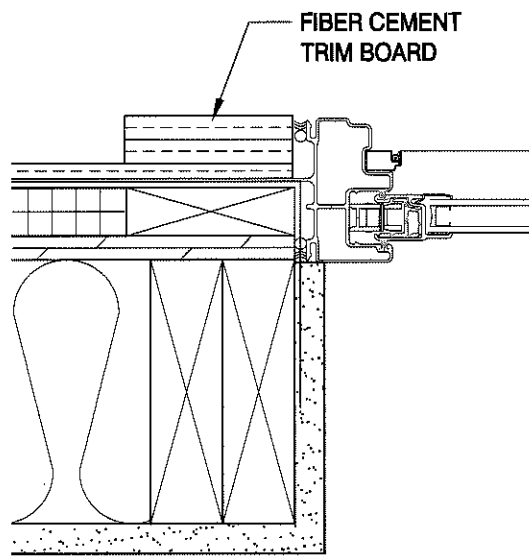
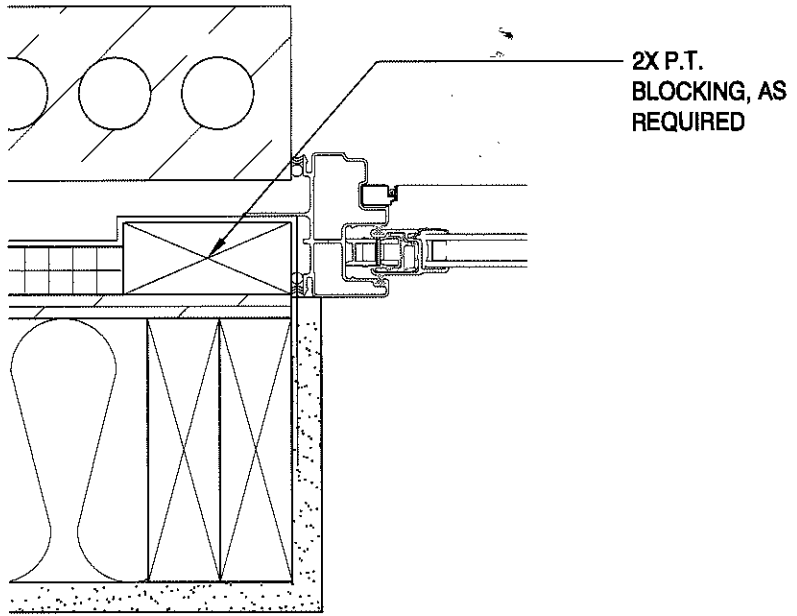
SCALE: 3"=1'-0"



WINDOW HEAD DETAIL @ MASONRY VENEER
 SCALE: 3"=1'-0"



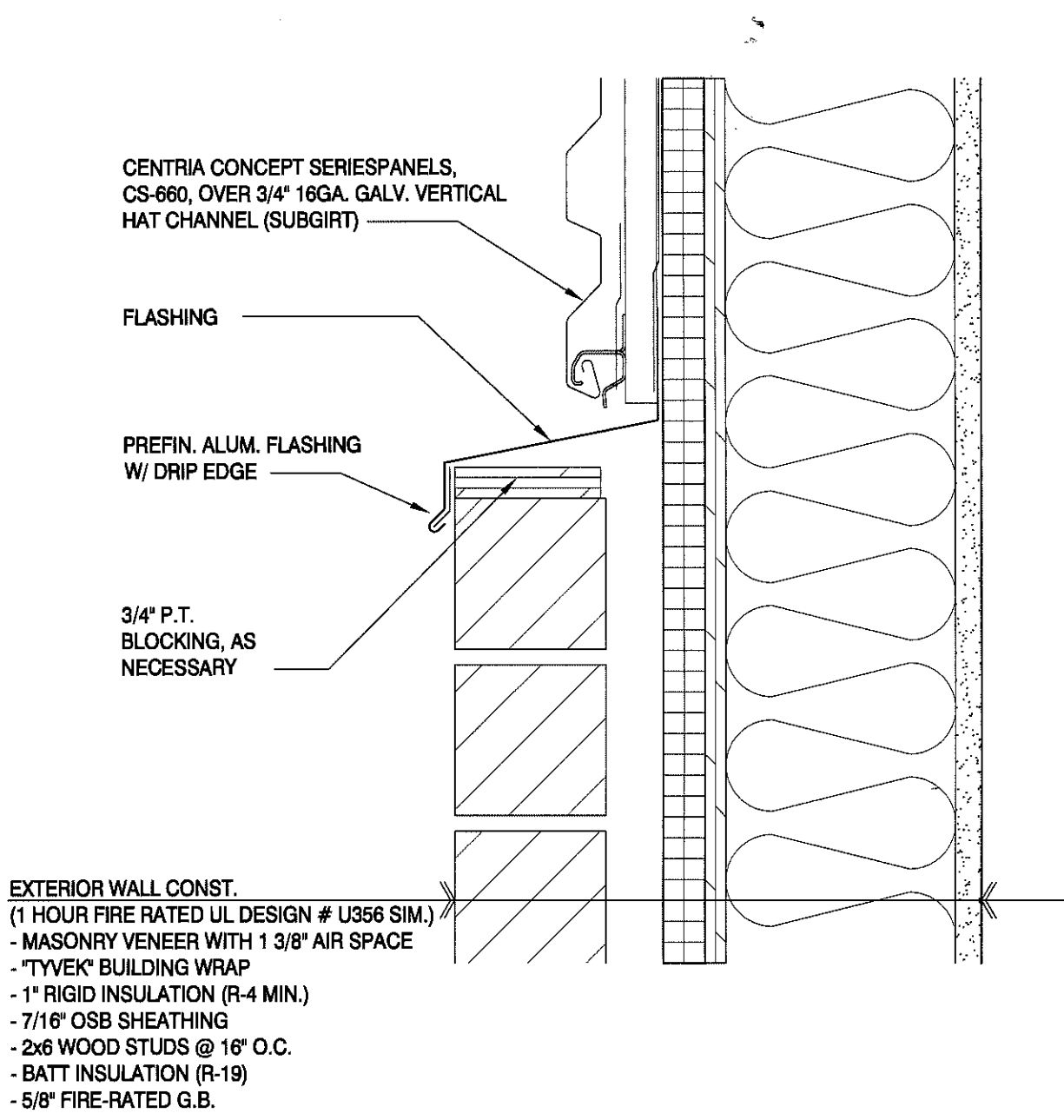
WINDOW SILL DETAIL @ MASONRY VENEER
 SCALE: 3"=1'-0"



**WINDOW JAMB DETAILS
@ EACH EXTERIOR FINISH**

SCALE: 3"=1'-0"

River House Apartments
Atlantic Realty Partners
2015-05-18



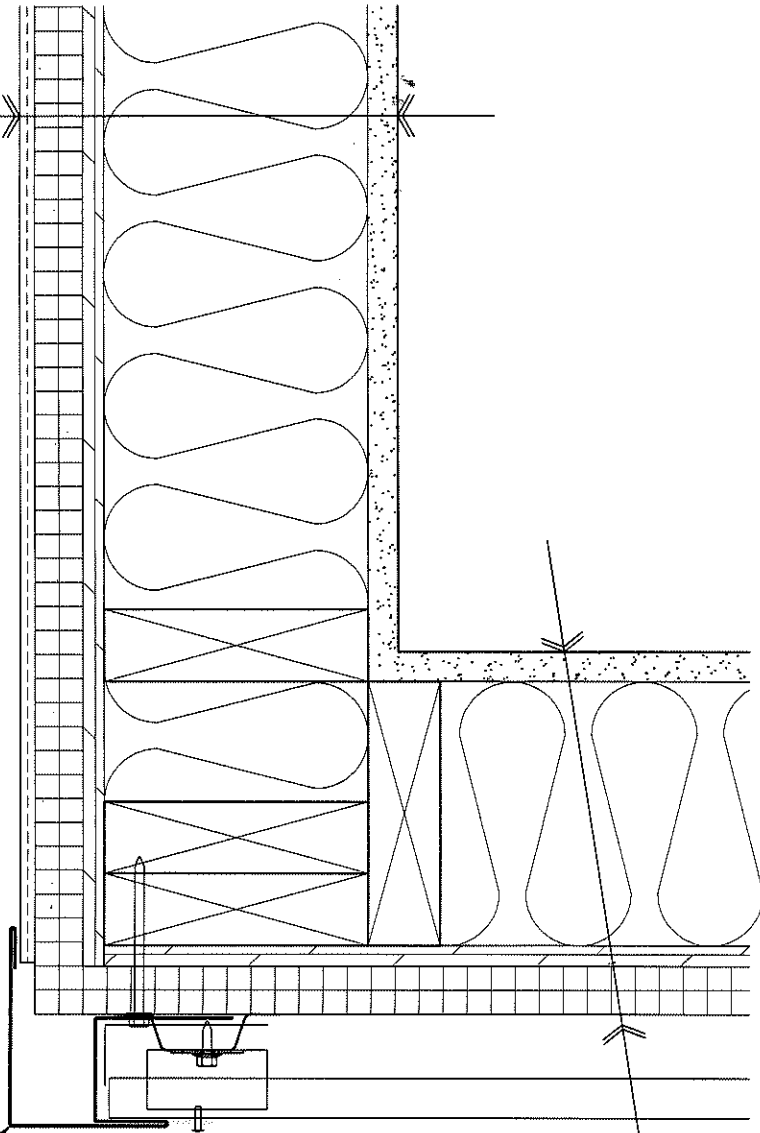
**VERTICAL SECTION DETAIL
BETWEEN MASONRY & SIDING**

SCALE: 3"=1'-0"

River House Apartments
Atlantic Realty Partners
2015-05-18

EXTERIOR WALL CONST.
 (1 HOUR FIRE RATED UL DESIGN # U356 SIM.)

- FIBER CEMENT BOARD
- "TYVEK" BUILDING WRAP
- 1" RIGID INSULATION (R-4 MIN.)
- 7/16" OSB SHEATHING
- 2x6 WOOD STUDS @ 16" O.C.
- BATT INSULATION (R-19)
- 5/8" FIRE-RATED G.B.

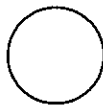


METAL SIDING
 CLOSURE FLASHING

EXTERIOR WALL CONST.
 (1 HR FIRE RATED UL DESIGN # U356 SIM.)

- VERTICAL CORRUGATED METAL PANEL
- "TYVEK" BUILDING WRAP
- 1" RIGID INSULATION (R-5)
- 7/16" OSB SHEATHING
- 2x6 WOOD STUDS @ 16" O.C.
- BATT INSULATION (R-19)
- 5/8" FIRE-RATED G.B.

**OUTSIDE CORNER
 FIBER CEMENT / METAL SIDING**

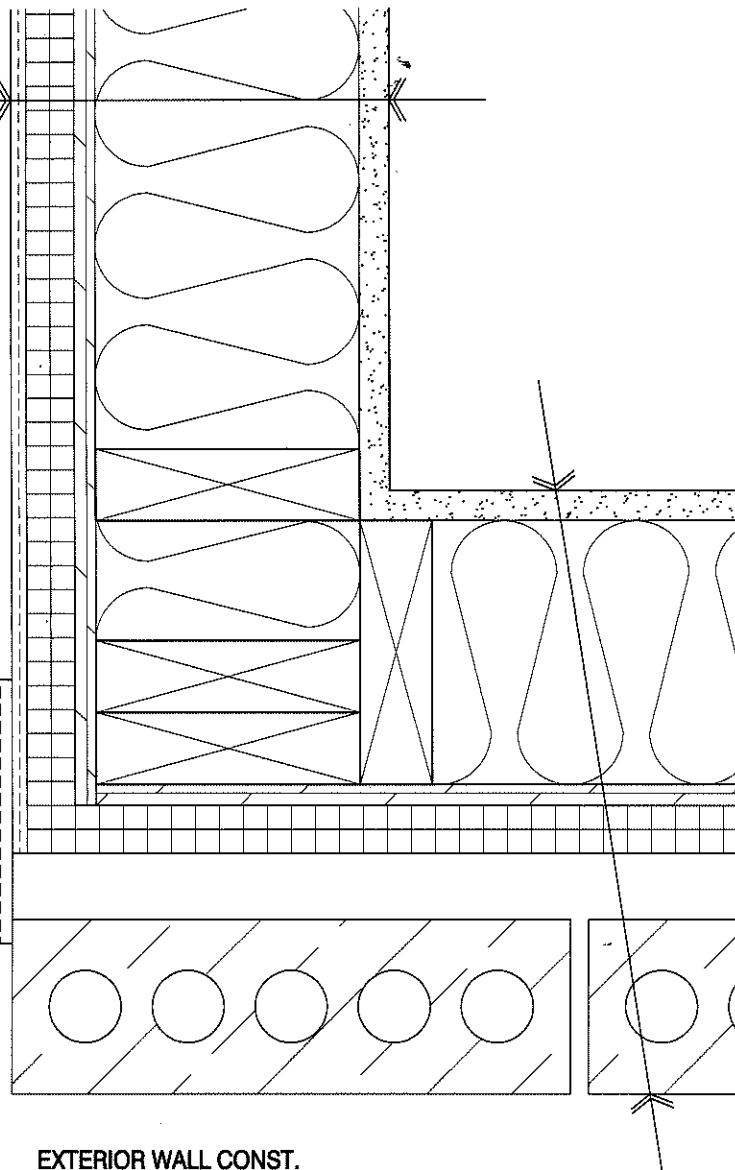


SCALE: 3"=1'-0"

River House Apartments
Atlantic Realty Partners
 2015-05-18

- EXTERIOR WALL CONST.**
 (1 HOUR FIRE RATED UL DESIGN # U356 SIM.)
- FIBER CEMENT BOARD
 - "TYVEK" BUILDING WRAP
 - 1" RIGID INSULATION (R-4 MIN.)
 - 7/16" OSB SHEATHING
 - 2x6 WOOD STUDS @ 16" O.C.
 - BATT INSULATION (R-19)
 - 5/8" FIRE-RATED G.B.

FIBER CEMENT TRIM BOARD



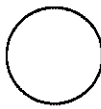
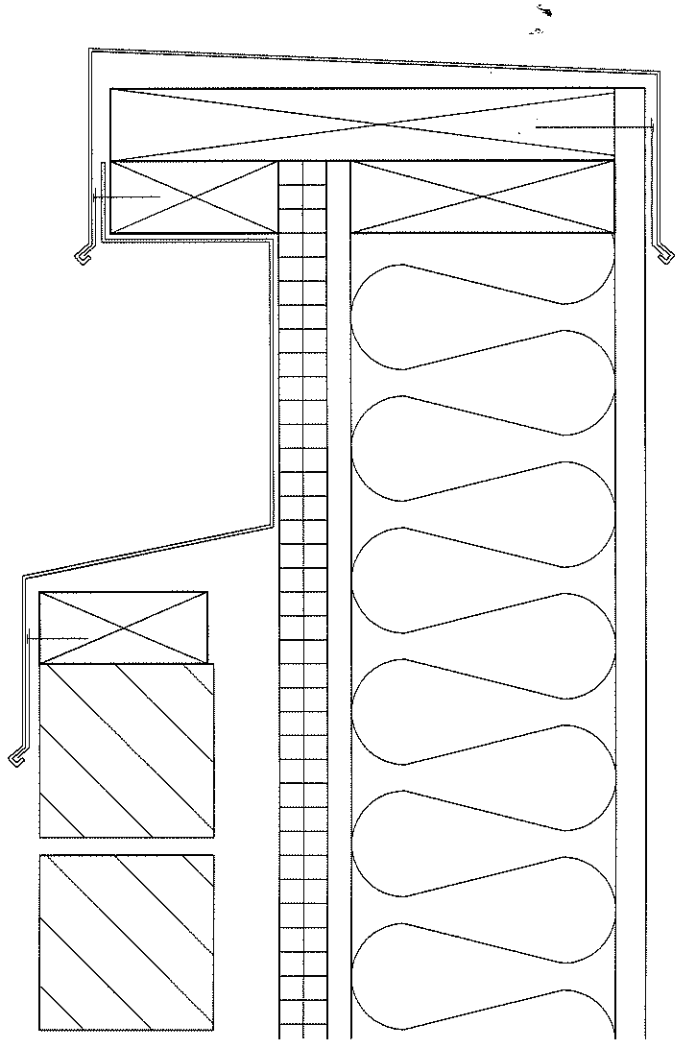
- EXTERIOR WALL CONST.**
 (1 HR FIRE RATED UL DESIGN # U356 SIM.)
- BRICK VENEER WITH 1 3/8" AIR SPACE
 - "TYVEK" BUILDING WRAP
 - 1" RIGID INSULATION (R-5)
 - 7/16" OSB SHEATHING
 - 2x6 WOOD STUDS @ 16" O.C.
 - BATT INSULATION (R-19)
 - 5/8" FIRE-RATED G.B.

**OUTSIDE CORNER
 FIBER CEMENT / METAL SIDNG**



SCALE: 3"=1'-0"

River House Apartments
 Atlantic Realty Partners
 2015-05-18

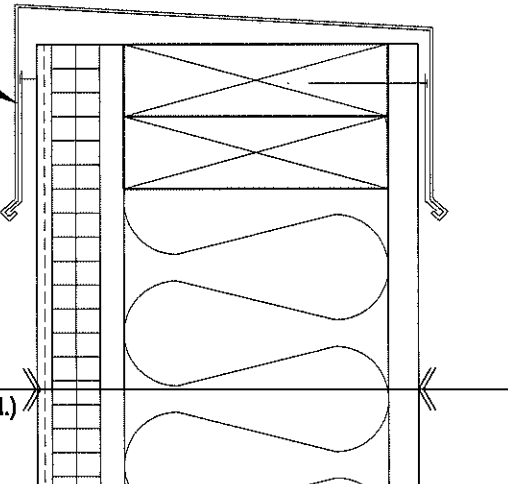


PARAPET WITH BRICK VENEER

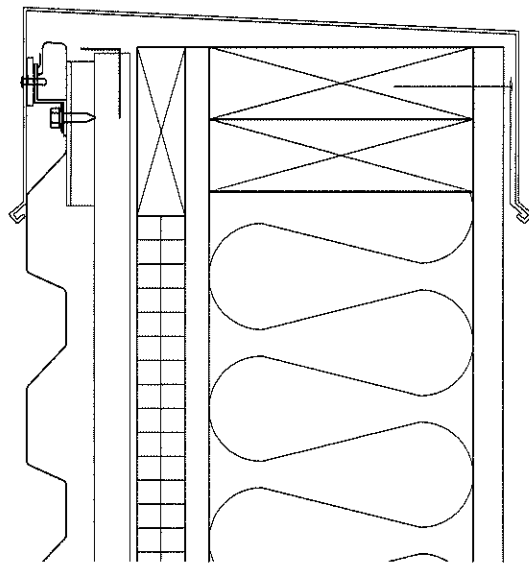
SCALE: 3"=1'-0"

River House Apartments
Atlantic Realty Partners
2015-05-18

PREFINISHED ALUM. COPING



- EXTERIOR WALL CONST.**
(1 HOUR FIRE RATED UL DESIGN # U356 SIM.)
- FIBER CEMENT BOARD
 - "TYVEK" BUILDING WRAP
 - 1" RIGID INSULATION (R-4 MIN.)
 - 7/16" OSB SHEATHING
 - 2x6 WOOD STUDS @ 16" O.C.
 - BATT INSULATION (R-19)
 - 5/8" FIRE-RATED G.B.



**PARAPET WITH
METAL SIDING AND FIBER CEMENT**

SCALE: 3"=1'-0"

River House Apartments
Atlantic Realty Partners
2015-05-18