

S.E. 17-7-22  
ATLAS P. 322

J.B.A. KERN'S SUBD.

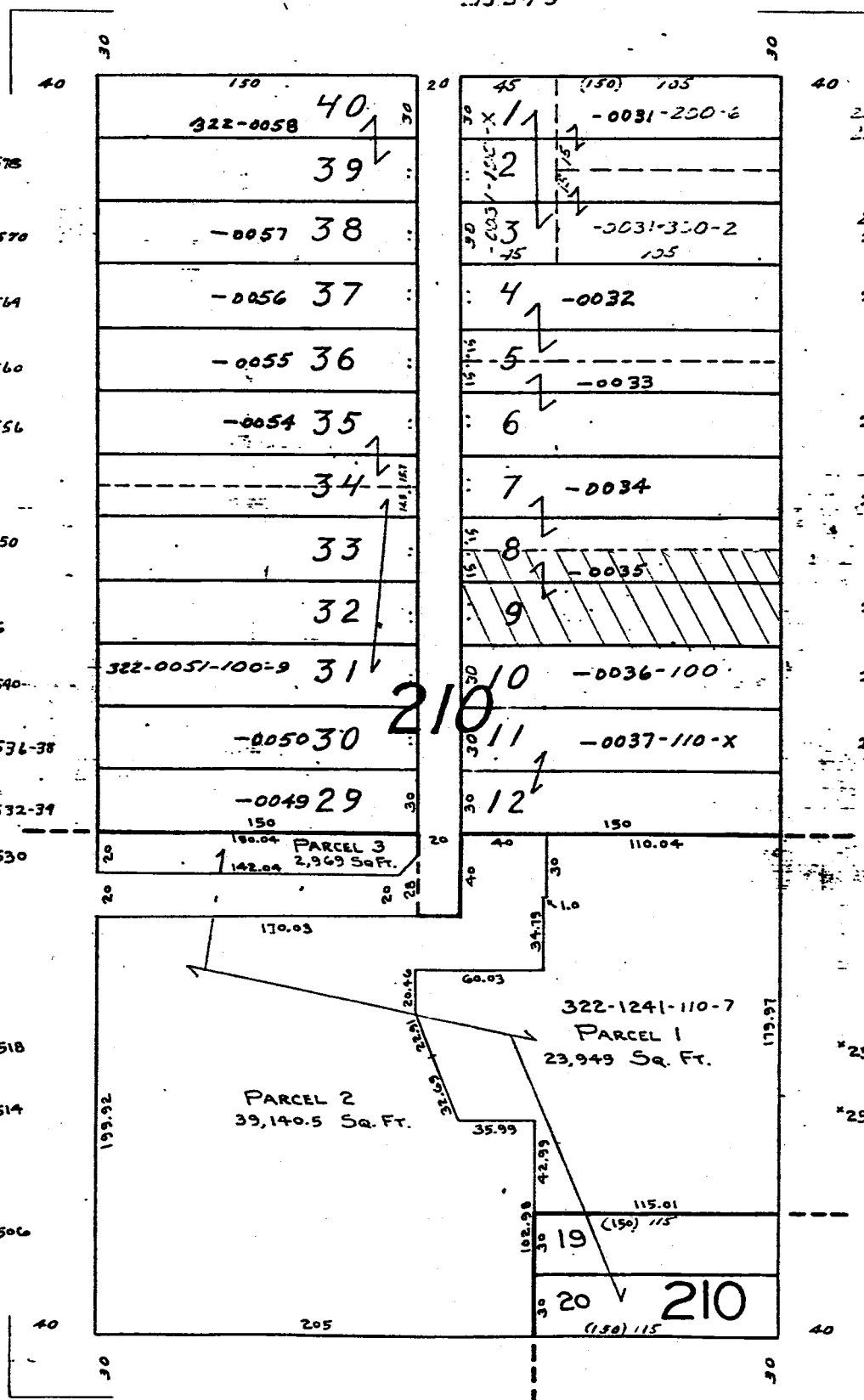
W. Clarke

St.

213-5-7-9



CERTIFIED SURVEY MAP No. 1631  
N. DR. MARTIN LUTHER KING, JR. DR.



2578  
2570  
2564  
2560  
2556  
2550  
2540  
2536-38  
2532-34  
2530  
2518  
2514  
2506

2577 & A  
2575 & A  
2573 & A  
2571 & A  
2563-5  
2557-9  
2553-5  
2547  
2541-3  
2537-9  
2519  
2515

W. Wright

St.

\* 224

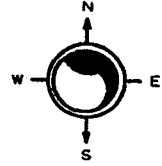
SE 08-7-22

ATLAS P. 282

282

282-20

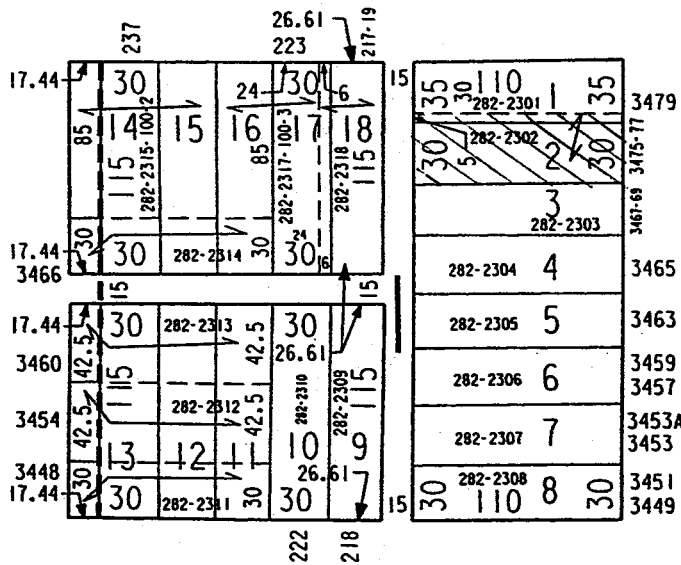
SCALE 1" = 80'



# SCHULHOF'S SUBDIVISION

## W KEEFE AV

LANDS  
N 3RD ST



N 2ND ST

## W RANDOLPH ST

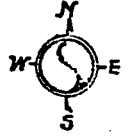
S.E. 8-7-22  
ATLAS #222

282

282-32

# V. SCHUETTE'S SUBD.

Vol. 12 Page 49



W. RANDOLPH ST.  
#415  
#48

#3434		2219	F4247			282-2215	#3437
#3430	101	2220	F4248	2	F4244	2216	#3435
#3426		282-2221	F4249	F4246	F4245	2217	#3433
		7	6	5	4	3	#3431
		30				2	
						1	
						30	#3427
						36	
#3420		107.68	26	27	1 F4191	110	#3423
					282-1326		
#3416		F4209	25	2	2 F4192	-1327	#3417
		282-1344					
		F4208	24	3			
		-1343					
#3412			23	4	F4193		#3409
#3410					-1328		
		F4207	22	5			
		-1342					
#3406		F4206	21	6	F4194		#3405
#3404		-1341			-1329		
#3402		F4205	20	7	F4195		#3401
#3400		-1340			-1330		
			19	8	F4196		#3369
#3364					-1331		
		F4204	18	9	F4197		#3365
		-1339			-1332		
#3362		F4203	17	10	F4198		#3361
#3360		-1338			-1333		#3359
#3358			16	11			
		F4202	15	12	F4199		#3355
#3352		-1337			-1334		
#3350			14	13	F4200		#3353
		-1336			-1335		#3351
		107.68			110		

Assessor's Plat No 113 Blk. 10 Adj.

LILLIE LAND CO'S SUBD.  
Vol. 16 Page 17

N. 4TH ST.

MICROFILMED

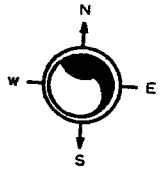
4

4

NE 08-7-22  
ATLAS P. 273

273

273-37  
SCALE 1" = 80'



WASHINGTON PARK

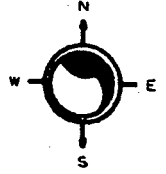
N PORT WASHINGTON AV

W MELVINA ST

3896	32	24	125	32	15	32	124.10	32	3895
			273-1569				273-1550	1	
3892B	30	23		30		30	273-1551	2	3893
3892A			273-1568						
3892									
		122					273-1552	3	3889
3888			21	273-1567			273-1553	4	3887
3882		20	273-1566				273-1554-100-5	5	3883
3880		19	273-1565					6	
3878		18		15	15		273-1556	7	3877
3876		17	273-1564				273-1557	8	3873
3872		16	273-1563				273-1558	9	3871
3870									
		15	273-1562					10	3867
3866									
		14					273-1559	11	3867
3862									
3860	30	13	273-1561	30	15	30	273-1560	12	3861
			125				124.10		

N 5TH ST

W ABERT PL



JUDGE SMITH'S SUBDIVISION

W MAPLE ST

S 6TH ST

S 5TH ST

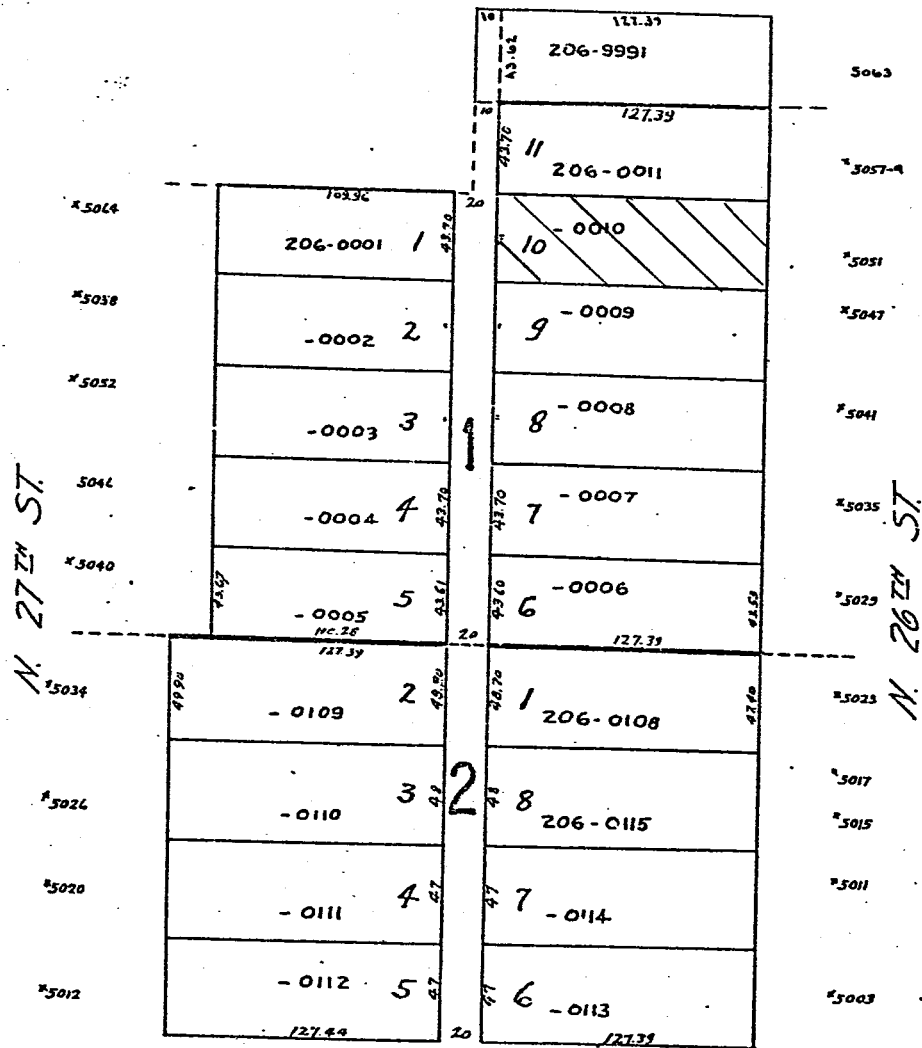
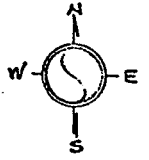
	553	549	545	543	539	535	533	531	529	525	521	519	515	511	509	505	501
1812	25 42-0928 37	125 43 88	25 20 15	14 13	12	11	10	9	8	7	6	5	4	3	2	25 125 42-0912	25
1818	25	17	199.54	199.14	25	20	25	199.14	199.54	30	25	1821					
1820	18	199.95	462-0930					462-0944	199.95	29		1825					
1824	19	200.36	462-0931					23.86	462-0943	200.36	28	1833					
1828-28A	20	462-0932-100-9 200.77						22.5	61.4	200.77	176.5	27	1833A				
	21	121.17 121.58	462-0933-100-9 201.18	39.6				462-0941	2.5 85.18	462-0942 201.18	116	26					
1838	25 21.6	22 122	201.60	462-0935-100 21.6	25	20	25	462-0940	201.60	25.6	25	1835					
	23	122.34	201.94	462-0936-100 21.6	25	20	25	100.80 462-0938	201.94	21.6	25	1839					
				540	536A	536	532	530		520			100.80				

W BURNHAM ST

S. W. 31-8-22  
ATLAS P. 206

206

206-23



LANDS  
BUENING'S SUBD.  
BUENING & BOECK'S SUBD.

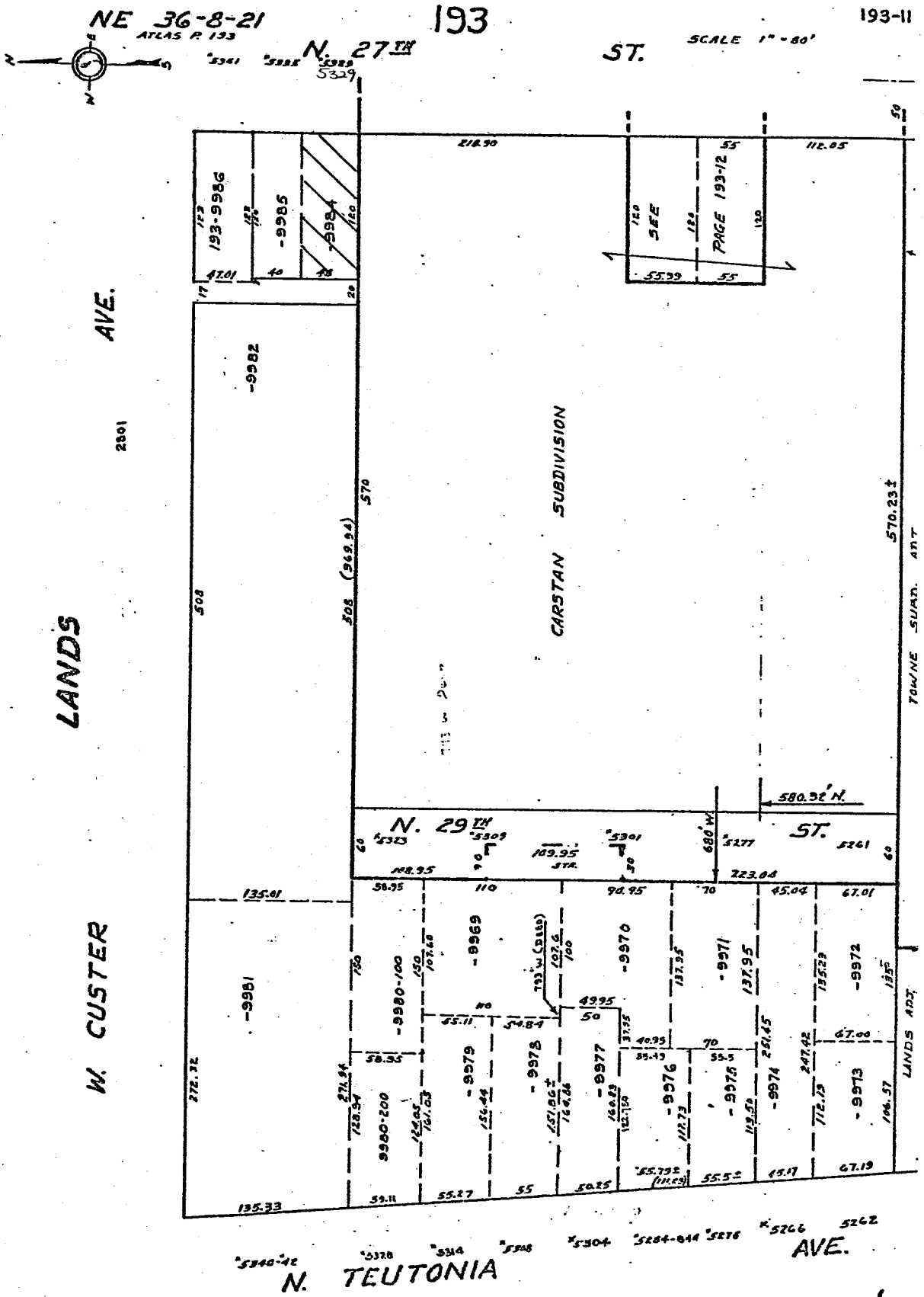
N. 27th ST.

N. 26th ST.

W. FAIRMOUNT AVE.

MICROFILMED

MICROFILMED 5-3-73



193-11

N. TEUTONIA AVE.

LANDS

W. CUSTER

CARSTAN SUBDIVISION

ST.

SCALE 1" = 80'

AVE.

2801

508

508 (369.94)

713 1/2 Du...

N. 29th ST.

ST.

TOWNE SQUARE, 4717

LANDS ADD.

5340-42 5328 5314 5308 5304 5284-844 5278 5266 5262

SE 13-7-21

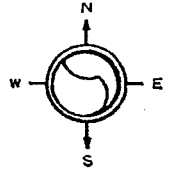
326

326-01

ATLAS P. 326

SCALE 1" = 80'

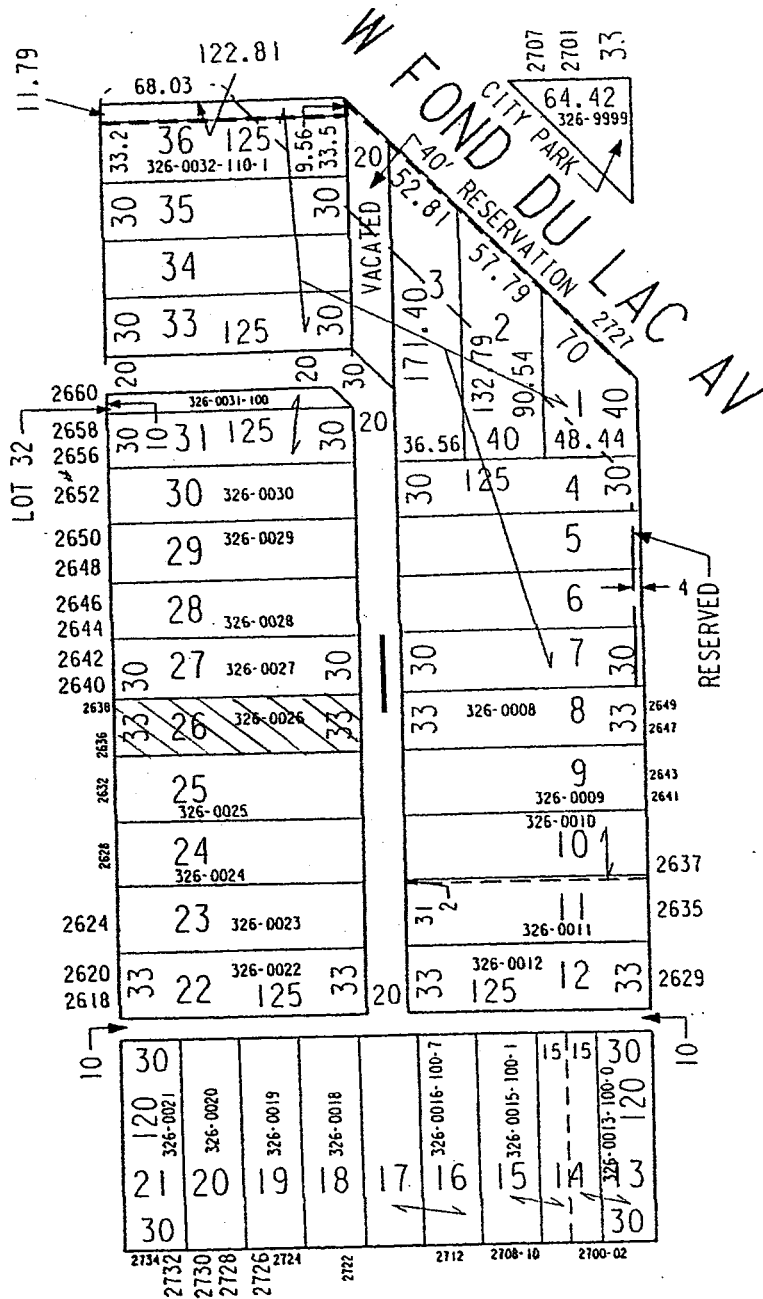
LANDS



W CENTER ST

BLOCK 1 BEING PART OF GERMANIA PARK

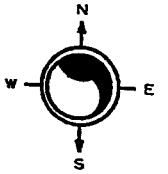
N 28TH ST



N 27TH ST

W CLARKE ST



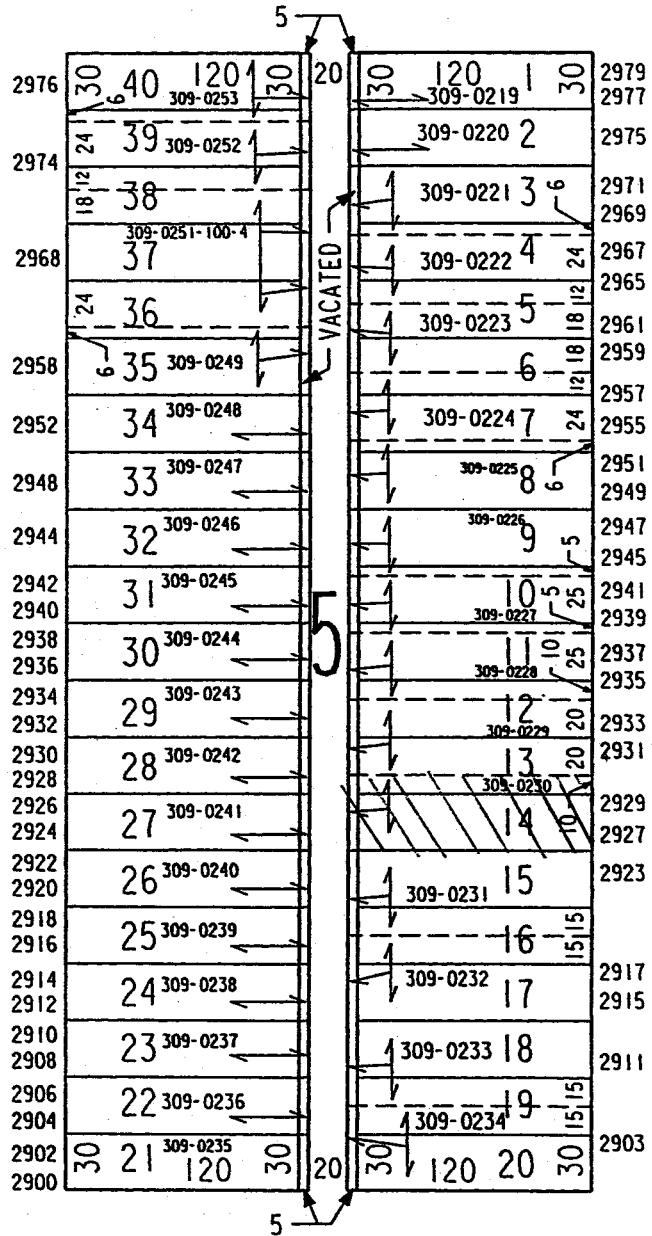


CAWKER'S SUBDIVISION "A"

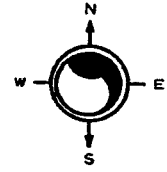
W CHAMBERS ST

N 29TH ST

N 28TH ST



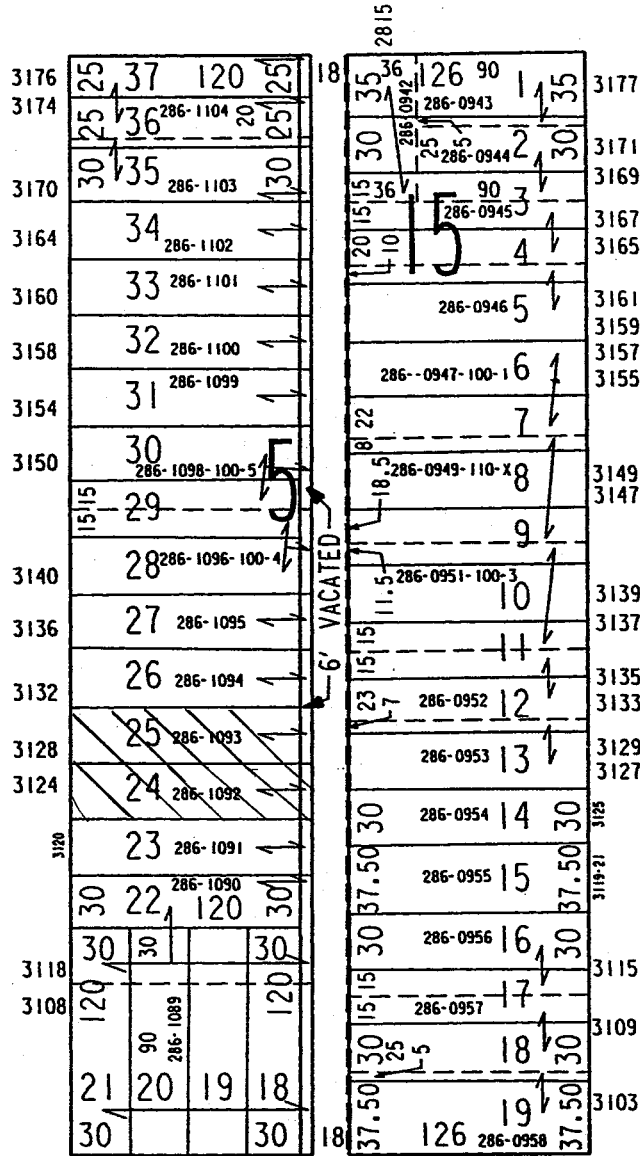
W LOCUST ST



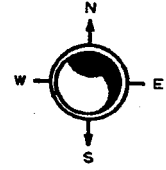
W AUER AV

WARNER BROS. AND WAMBOLD'S  
 SUBDIVISION NO. 2

N 29TH ST



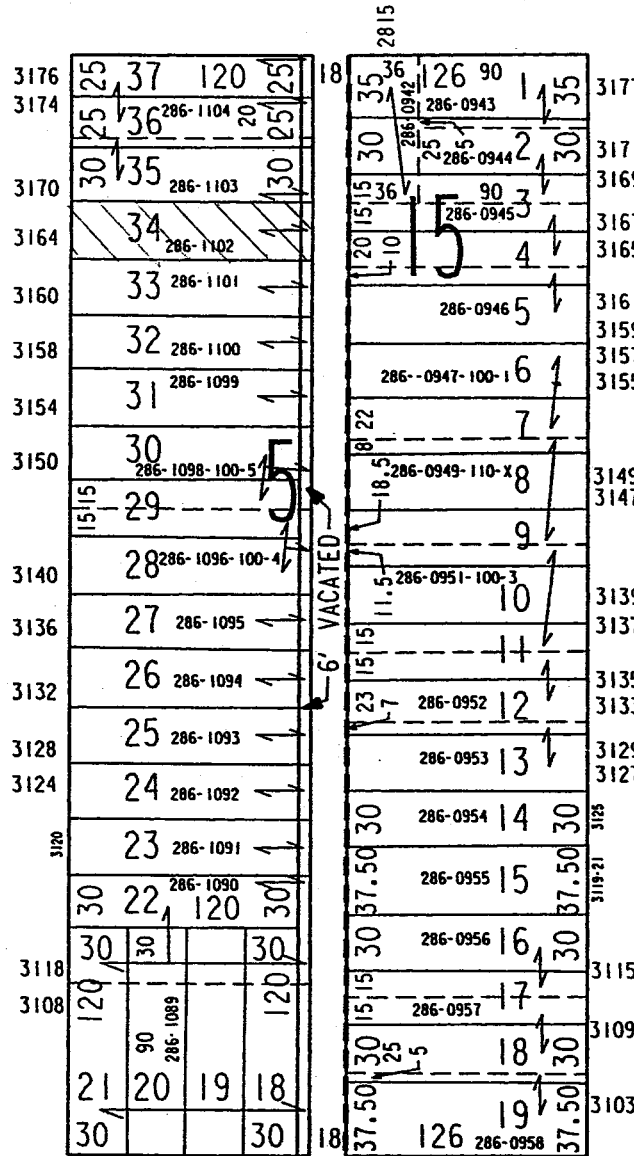
N 28TH ST  
 SECOND CONTINUATION OF GRAND VIEW



# W AUER AV

WARNER BROS. AND WAMBOLD'S  
SUBDIVISION NO. 2

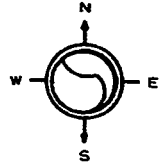
N 29TH ST



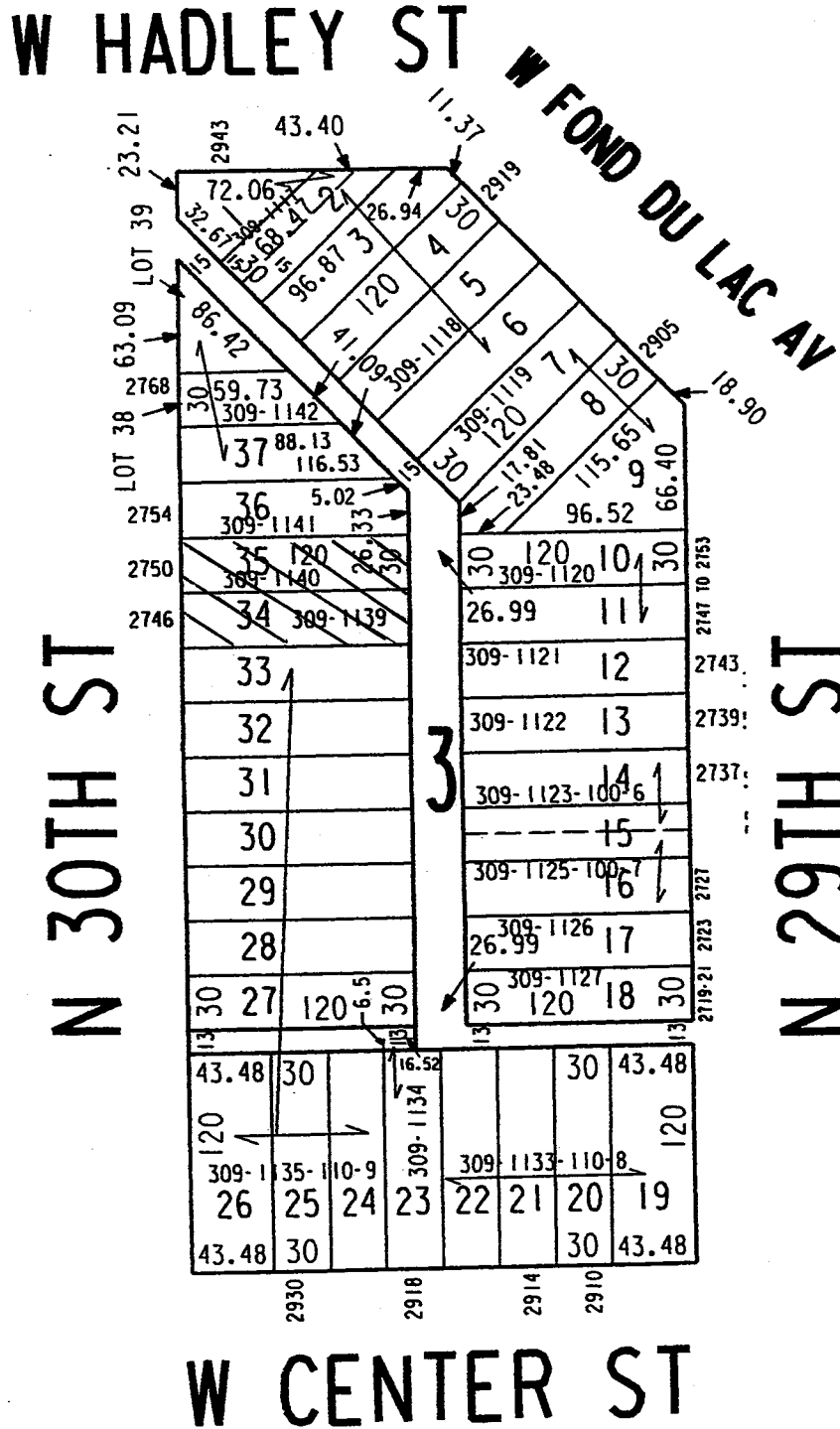
N 28TH ST

SECOND CONTINUATION OF GRAND VIEW

# W BURLEIGH ST



PAULINE'S SUBD.



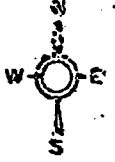
35

S.E. 24-7-21  
ATLAS P. 365

365

COLD SPRING PARK

365-17



W. VLIET

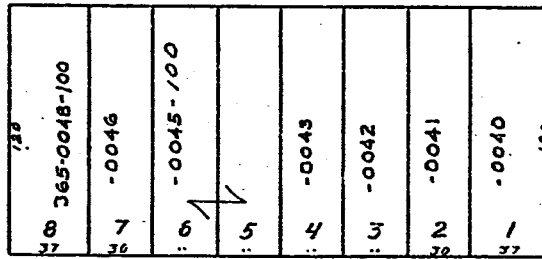
ST.

29-7 3025-3

11-5 13-11 17-5 3003-01

ST.

1346-4

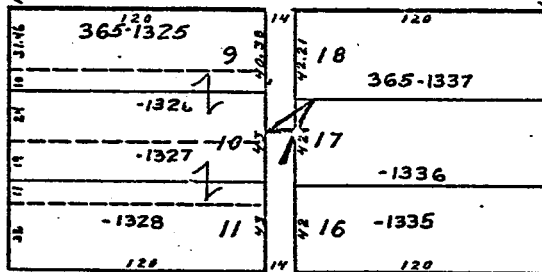


36

32

28

24



13375

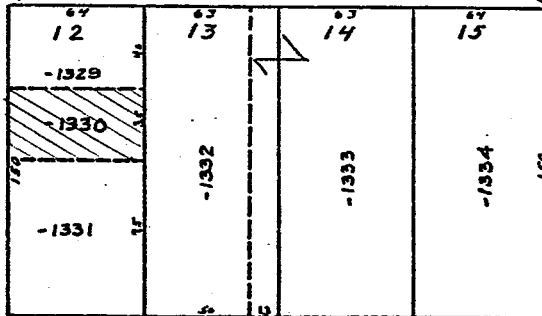
31

257

N. 31ST

18-6

12-10



N. 30TH ST.

3030-28

22-0

14

02

W. MCKINLEY

BLVD.

YATES & WOLCOTT'S SUBD.

Vol. 27, Pgs. 11

UNRECORDED

N.E. 24-7-21  
ATLAS P. 341

MANUFACTURING PLAT-STATE

349

349-32

Assmt Subd. No 14



W. NORTH

AVE.

N 1/2 SEC

3/23

3119-7 3115-3 3114-49 3115 - 3101

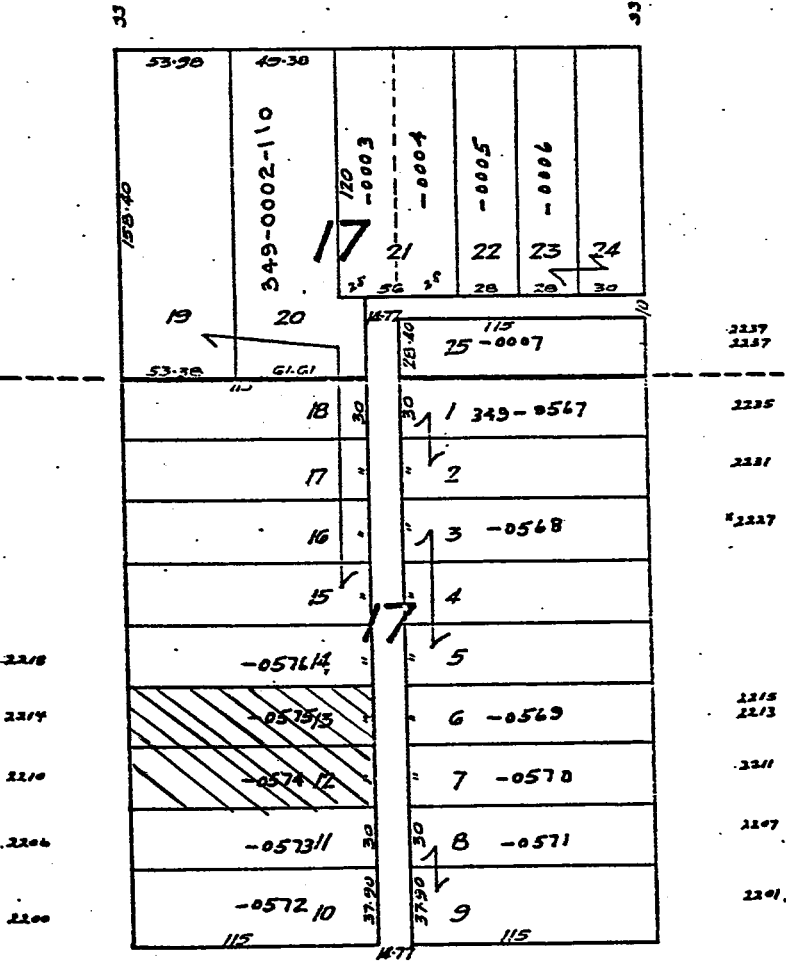
N 1/2 SEC

ST.

ST.

N. 32<sup>ND</sup>

N. 31<sup>ST</sup>



W. GARFIELD

AVE.

Cont. of Mallory & Kern's Addn.

RECORDED 3-25-31

SE 13-7-21

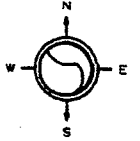
326

326-19

ATLAS P. 326

SCALE 1" = 80'

MANUFACTURING PLAT-STATE

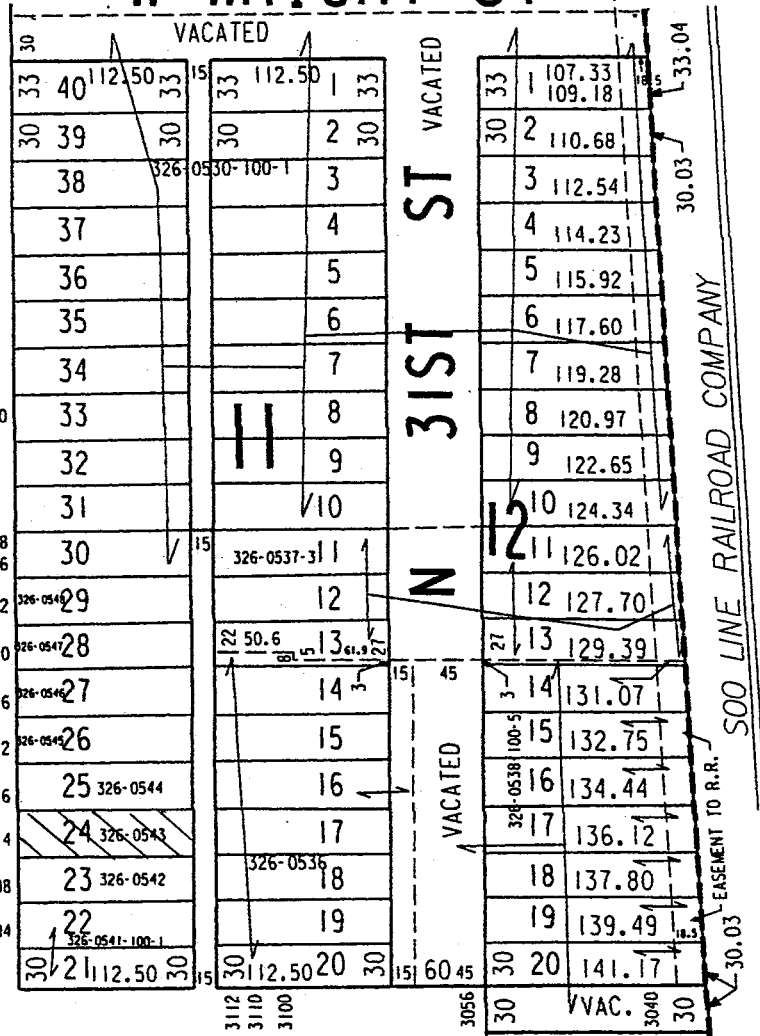


CONT. OF NORTH AVENUE PARK

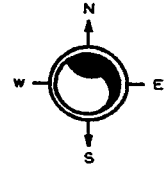
W WRIGHT ST

N 32ND ST

N 31ST ST



W MEINECKE AV

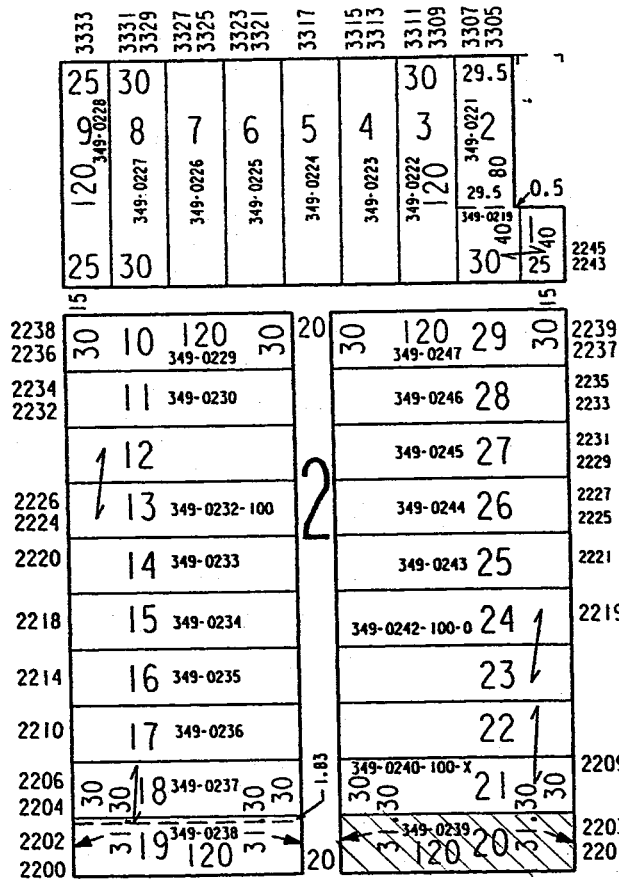


COLUMBIA PARK

W NORTH AV

N 34TH ST

N 33RD ST



W GARFIELD AV



INDUSTRIAL PLAT

W. WRIGHT

ST.



ST.

ST.

N 33 RD

N 32 RD

MICROFILMED

2478	<sup>120</sup> G13159 326-0883	40	15	1	<sup>120</sup> G13119 326-0855	2479 2477
2472	G13158 -0888	39		2		
2468	G13157 -0887	38		3		
2466	G13156 -0886	37		4		
2462	G13155 -0885	36		5		
2458	G13154 -0884	35		6		
2454	G13153 -0883	34		7		
2448	G13152 -0882	33		8		
2446	G13151 -0881	32	5	9	G13126 -0856	2447
2440	G13150 -0880	31		10	G13127 -0857	2443
2436	G13149 -0879	30		11	G13128 -0858	2437
2434 2432	<del>G13148 -0878</del>	<del>29</del>		12	G13129 -0859	2433
2430 2428	G13147 -0877	28		13	G13130 -0860	2431
2424	G13146 -0876	27		14	G13131 -0861	2427 2425
2420	G13145 -0875	26		15	G13132 -0862	2423
2418	G13144 -0874	25		16	G13133 -0863	2417
2412	G13143 -0873	24		17	G13134 -0864	2415
2408	G13142 -0872	23		18	G13135 -0865	2409
2404	G13141 -0871	22		19	G13136 -0866	2407 2405
2400	G13139 326-0869	21	15	20	G13137 326-0867	2403

W. Meinecke

3218  
3220

3212

Ave.

NE 13-1-21

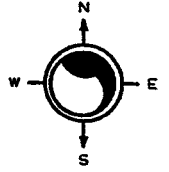
309

309-26

ATLAS P. 309

SCALE 1" = 80'

MANUFACTURING PLAT-STATE



# FULLER-WARREN HEIGHTS

## W HADLEY ST

N 34TH ST

N 33RD ST

	3323			3317				
	45	65	105	40	14	45	105	309-0801
	30	37	1	45		30	5	1
		309-0836		309-0837				
2772	30	36	309-0835	30		30	309-0802	2
		35	309-0834				309-0803	3
2768		34	309-0833				309-0804	4
2764		33	309-0832				5	309-0805
2760		32	309-0831				6	309-0806
2754		31	309-0830				7	309-0807
2750		30	309-0829				8	309-0808
2748		29	309-0828				9	309-0809
2742		28	309-0827				10	309-0810
2738		27	309-0826				11	309-0811-100-8
2736		26	309-0825				12	
2734		25	309-0824				13	309-0813
2732		24	309-0823				14	309-0814
	2728	30	309-0822				15	309-0815
	2722	23	105	30		30	105	15
	2716-10A	15		15		15		

	3326			3324				
	30	20	309-0820	30	44			
	22	21	309-0819	20	120			
	30	18	309-0818	19	309-0816-100			
		17		16	30	44		
		30		44				

## W CENTER ST

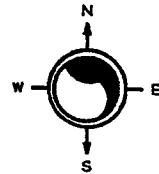
NE 25-7-21

ATLAS P. 388

388

388-27

SCALE 1" = 80'



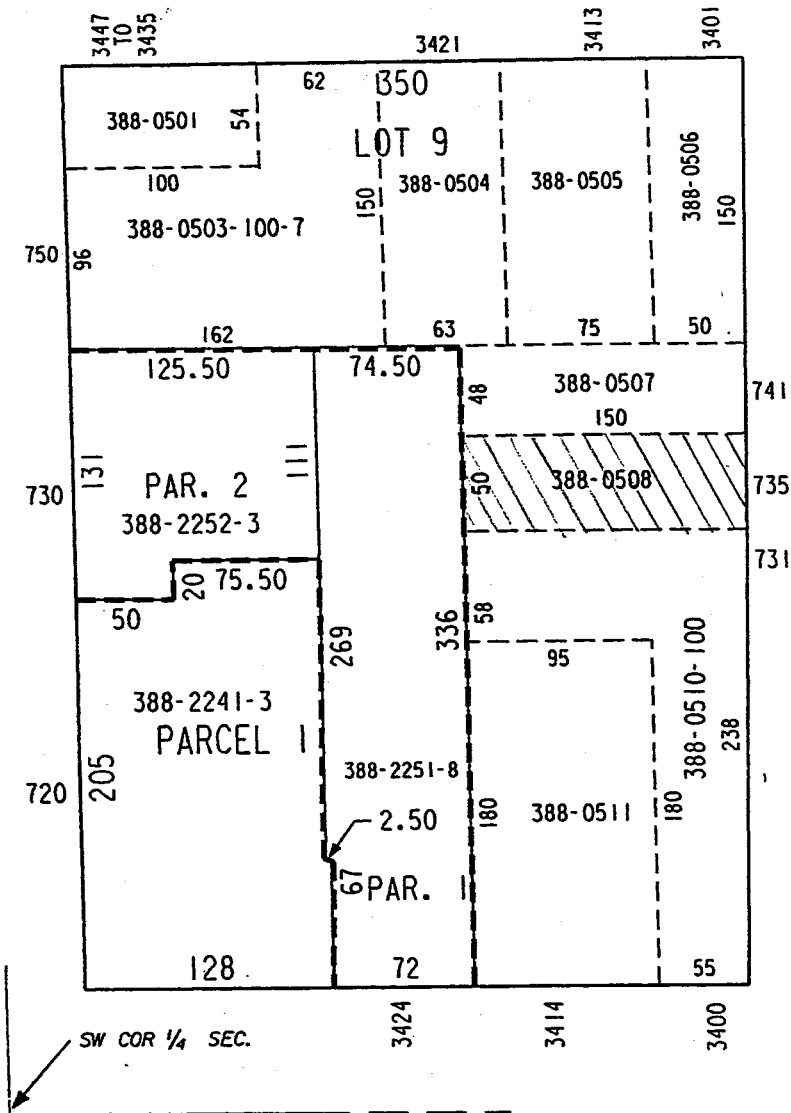
DOUSMAN'S SUBD.

W WELLS ST

N 35TH ST

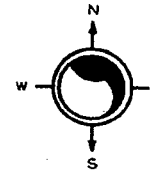
N 34TH ST

C.S. MAP  
NO. 4655



W WISCONSIN AV

C.S. MAP  
NO. 4941



COLUMBIA PARK

W LLOYD ST

N 34TH ST

N 33RD ST

Year	NO VEH.	ACC.	Parcel ID	Area	Parcel ID	Area
2060				36		14
2058			349-0367	28.02	349-0350	120
2056			349-0366	28.02	349-0351	28.02
2054	30	19		30	39	30
2052			349-0365	18	349-0352	3
2048			349-0364	17		4
2046				15		15
2044			349-0363	16	349-0353	5
2040			349-0362	15	349-0354	6
2038						
2036			349-0361	14	349-0355-100-5	7
2032			349-0360	13		8
2030						
2028			349-0359-100-7	12		9
2026						
2025					349-0357-100-6	10
2023						
2020						
2018			349-1523	12	349-1514	13
2017					349-1515	2
2014	14	16	349-1522	10	349-1516	3
2008	6	67	349-1521	19		4
2006					349-1517-100-3	4
2004	21	66	349-1520	8	349-1518-100-9	5
2002	28	33		120		6

W BROWN ST

MALLORY AND KERN'S ADDITION

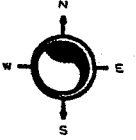
08-12-97

ASSESSOR'S OFFICE  
CITY OF MILWAUKEE

SE 13-7-21  
ATLAS P. 326

326

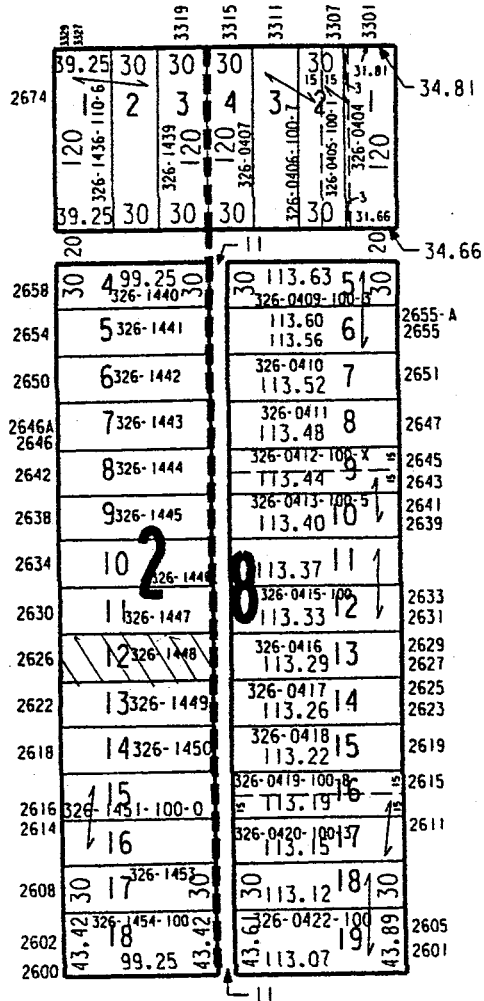
326-21  
SCALE 1"=80'



W CENTER ST

PRUSSIAN HEIGHTS  
N 34TH ST

CONTINUATION OF LEWIS SUBDIVISION  
N 33RD ST

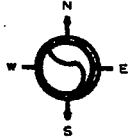


W CLARKE ST

SE 12-7-21  
ATLAS P. 286

286

286-20  
SCALE 1"=80'



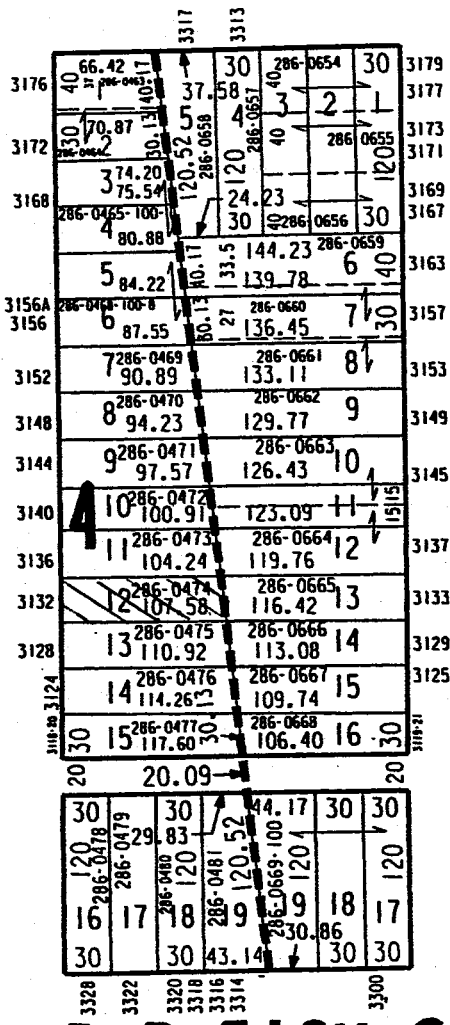
W AUER AV

FOND DU LAC AV HEIGHTS

N 34TH ST

N 33RD ST

FOND DU LAC & BURLEIGH  
LAND CO'S SUBD. NO 1



W BURLEIGH ST

N.E. 25-7-21  
ATLAS R. 388

# 388 FLYNN'S SUBD.

388-D4



N. 33RD

ST.

N 1/4 SEC

AVE.

3311 to 3303

3325 3319-21

3325

3331

3335-7

3339-41

3343-5

3403-05

3407-09

3413-5

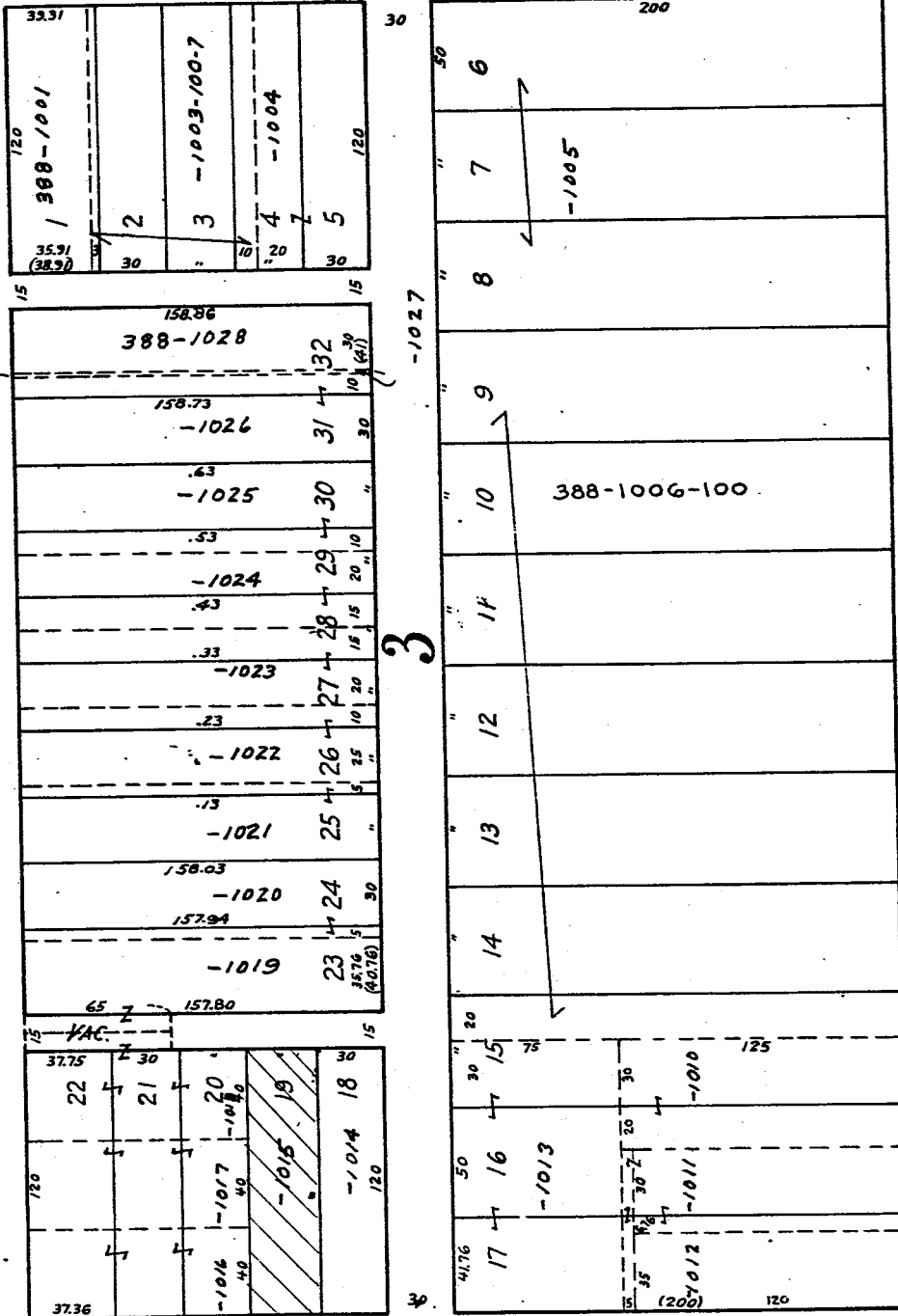
W. JUNEAU

3425 3419-21

3429-31

70

70



N. 35th Street

3306  
BLVD.

3334-

3424-6  
W. HIGHLAND

3428-30

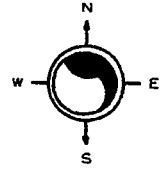
SE 13-7-21

ATLAS P. 326

326

326-32

SCALE 1" = 80'



PRUSSIAN HEIGHTS  
W CLARKE ST

N 35TH ST

N 34TH ST

2576	33	40	120	326-1515-33	14	33	120	326-1477-100-2	33	2575
2572	30	39	326-1514	30		30	2	30		2573
2568		38	326-1513							2571
2564		37	326-1512							2565A 2565
2560		36	326-1511							2563 2561
2556		35	326-1510							2557
2554		34	326-1509							2555
2552										2553
2550		33	326-1508							2551
2548										2549
2546		32	326-1507							2547
2544										2545
2542		31	326-1506							2541
2536		30	326-1505							2537
2532		29	326-1504							2533
2528		28								
		27	326-1503-100-2							
2520		26	326-1501							2527
2516		25	326-1500							2521
2512		24	326-1499							2519 2517
2508		23	326-1498							2515
		22	326-1496-100-6							2511
2500	30	21	120	30	14	30	120	20	30	2501

3404

W WRIGHT ST



S.W. 24-7-21  
ATLAS P. 366

366  
WOODLAWN PARK  
Vol. 14 Page 17

366-10



W. CHERRY ST.

3715

1454-6  
ST.  
1450-2  
1448  
1440-2  
1434-6  
1430  
1424-6  
1418-20

120	15	120
366-1726 28	40.50	1 366-1701
-1725 27	30	2 -1702
-1724 26	25	3 -1703
-1723 24	21	4 -1704
-1722 23	20	5 -1705
-1721 22	19	6 -1706
-1720 21	18	7 -1707
-1720 21	17	8 -1708
-1719 19	16	9
120	15	10 -1709
120	15	120

1457-9  
ST.  
1451  
1447-9  
1443-5  
1439-41  
1435-7  
1433  
1427-9  
1419-21

N. 38<sup>TH</sup>

15	18	17	16	15	14	13	12	11	15
120	-1718	-1717	-1716	-1715	-1714	-1713-100X	-1712	-1711	(1027)

1413-5  
N. 37<sup>TH</sup>

3730-2 3726-8 3720-4 3718 3714-6 3710-2  
W. VLIET ST.

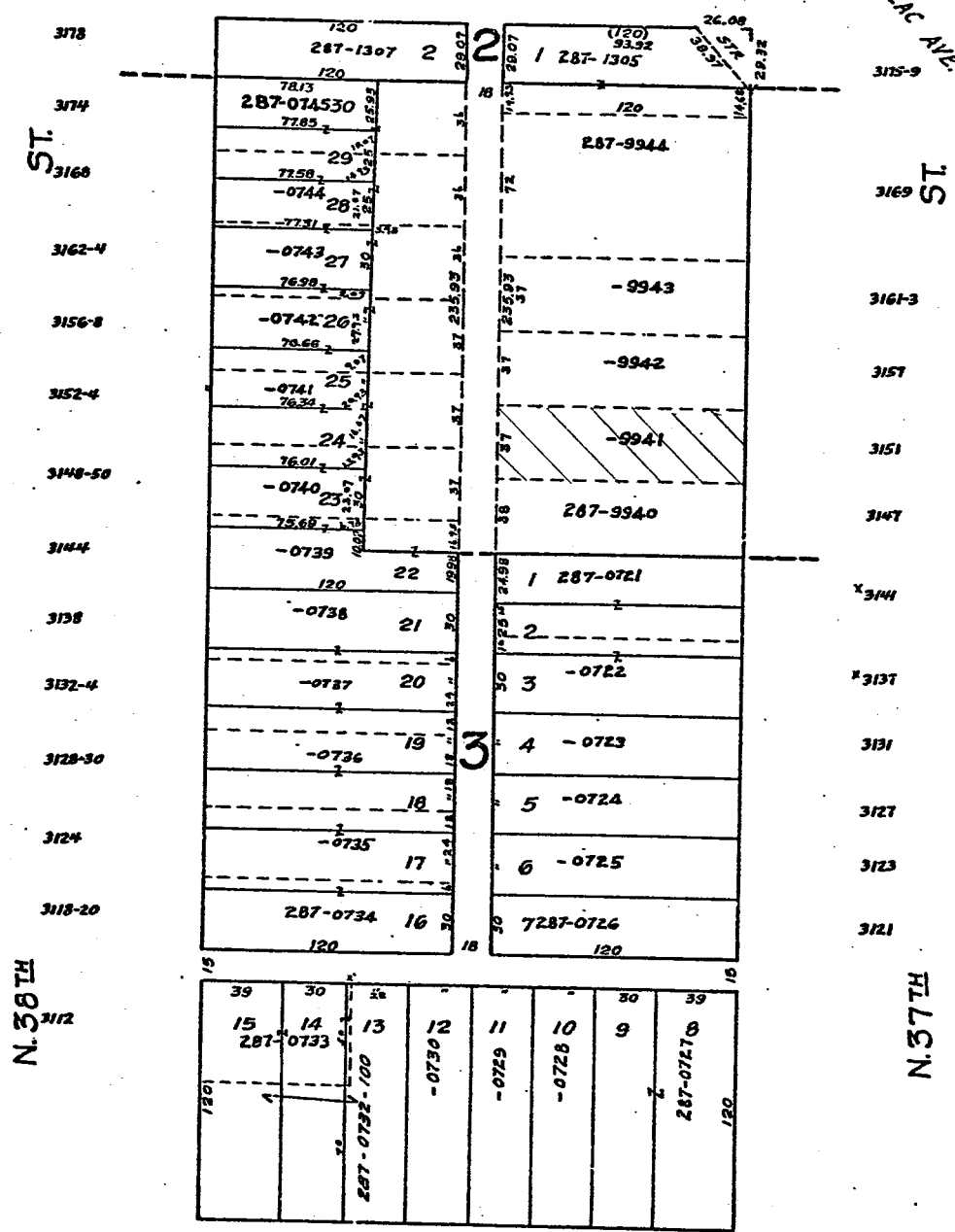
S.W. 12-7-21  
ATLAS P. 287

KRAUS SUBD.

287-15

W. AUER 287 AVE.

W. FOND DU LAC AVE.



MICROFILMED 2-20-81

W. BURLEIGH ST.

FOND DU LAC AVE PARK

S.W. 13-7-21

ATLAS P. 317

327

Vol. 18 Page 32  
Sherman Park

327-15

W. Clarke

St.



2518	120 327-1074 40 G-14964	18	120 1 327-1040 G-14930	30	2579 2577
St. 2574	-1073 39 G-14963		2 -1041 G-14931	19	2575 2573
2570	-1072 38 G-14962		3 [Hatched] 38 G-14932	20	2569 2567
2564	-1071 37 G-14961		4 -1042 G-14933	21	2565 2563
2560	-1070 36 G-14960		5 -1043 G-14934	22	2561 2559
2556	-1069 35 G-14959		6 -1044 G-14935	23	2557 2555
2552	-1068 34 G-14958		7 -1045 G-14936	24	2551 2549
2548	-1067 33 G-14957		8 -1046 G-14937	25	2547 2545
2542	-1066 32 G-14956		9 -1047 G-14938	26	2543 2541
2538 2536	-1065 31 G-14955	5	10 -1048 G-14939	27	2537
2534 2532	-1064 30 G-14954		11 -1049 G-14940	28	2533 2531
2530 2528	-1063 29 G-14953		12 -1050 G-14941	29	2527 2525
2526 2524	-1062 28 G-14952		13 -1051 G-14942	30	2521
2520 2518	-1061 27 G-14951		14 -1052 G-14943	31	2517 2515
N. 39th 2516 2514	-1060 26 G-14950		15 -1053 G-14944	32	2509-11
2512 2510	-1059 25 G-14949		16 -1054 G-14945	33	2507
2508 2506	-1058 24 G-14948		17 -1055 G-14946	34	2503 2501
2502 2500	-1057 23 G-14947		18 -1056 G-14947	35	
	120	18	120		

W. Wright

St.

MICROFILMED

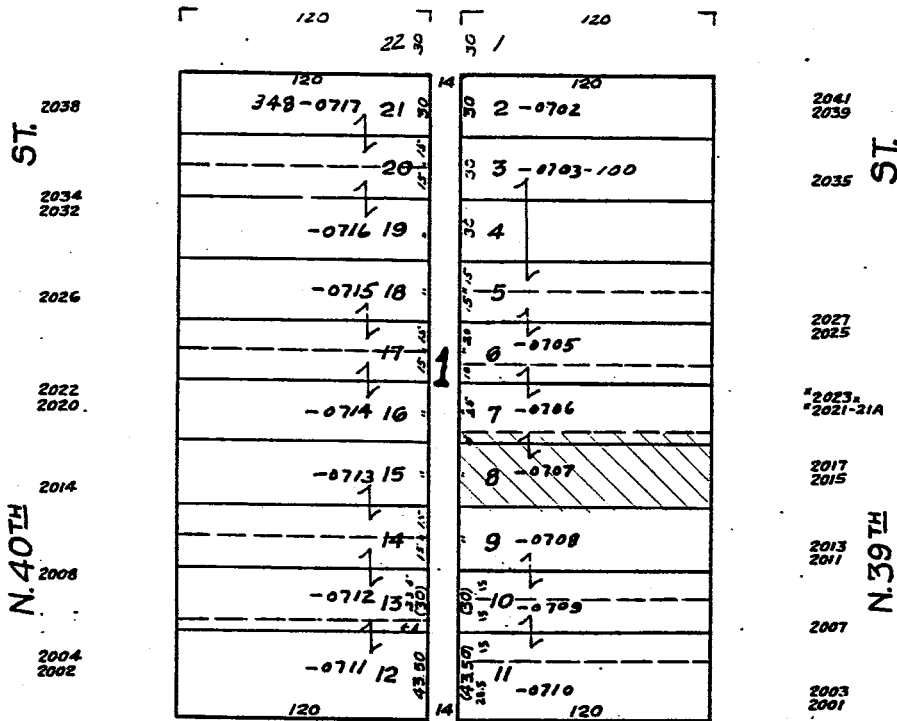
N.W. 24-7-21  
ATLAS P. 348

# 348 LISBON AVENUE PARK

348-24



W. LLOYD ST.



S. W. 1-7-21  
ATLAS R. 247

# 247 LANDS

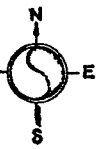
247-20

W. MARION ST.

3901 ST.

664.07' S  
OF N. L.

1179' W  
OF E. L.



K.  
674276

4270

4262

4256

4250

4244

4238

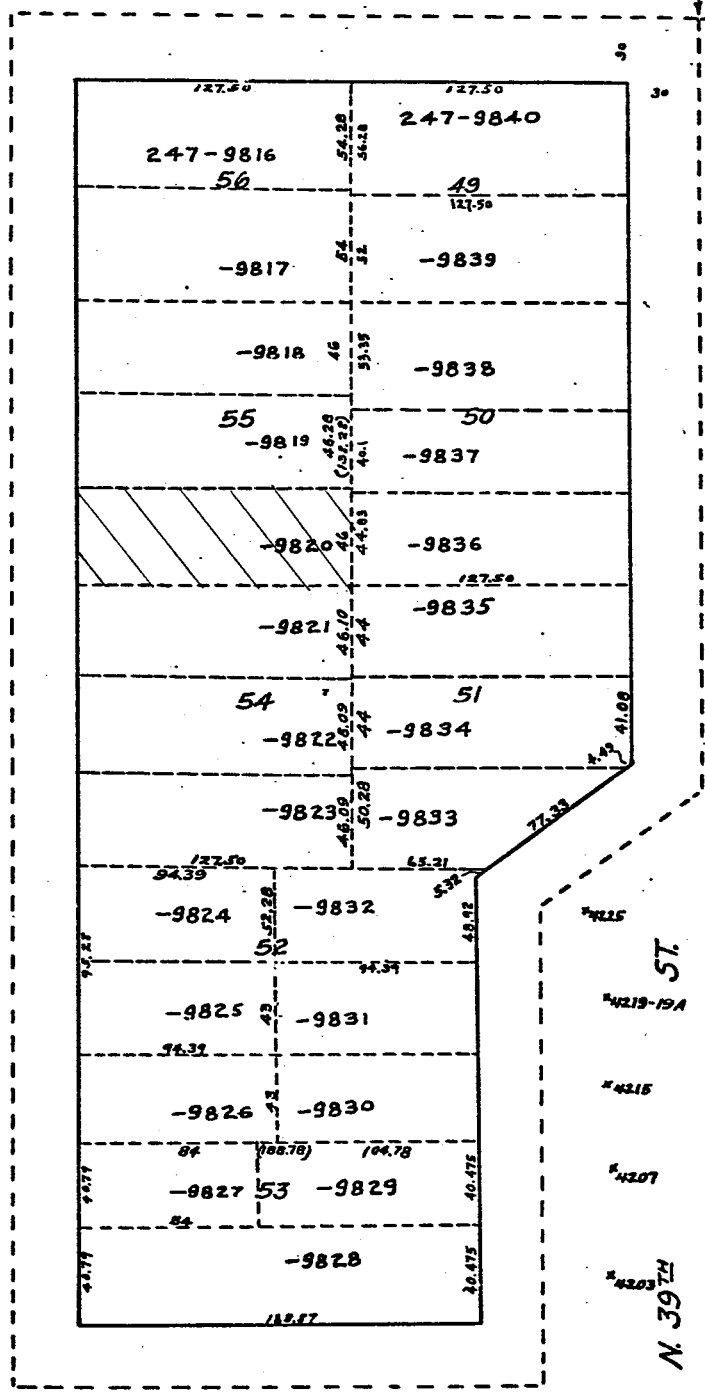
4232

4226

4218

4214

N. FORTIETH  
4208



ST.

4275

4265

4259

4255

4249

4243

4235

N. THIRTY-NINTH

ST.

4216

4219-19A

4215

4207

4203

N. 39TH

W. HOPE AVE.

AVE.

MICROFILMED 3-25-31

N.W. 24-7-21  
ATLAS P. 348

GRANT PARK  
Vol. 16 Page 37  
348

AVE

W. GARFIELD  
#419  
#421



ST

2175

2171

2167

2163

2161

2159

2157

2153

2151

2149

2145

2141

2137

2133

2129

2125

2121

2117

2115

2109

2103

N. 41 ST

120	1348-0560	75	45
120	1348-0559	38	45
120	1348-0576	38	45
120	1348-0577	38	45
120	1348-0578	38	45
120	1348-0579	38	45
120	1348-0580	38	45
120	1348-0581	38	45
120	1348-0582	38	45
120	1348-0583	38	45
120	1348-0584	38	45
120	1348-0585	38	45
120	1348-0586	38	45
120	1348-0587	38	45
120	1348-0588	38	45
120	1348-0589	38	45
120	1348-0590	38	45
120	1348-0591	38	45
120	1348-0592	38	45
120	1348-0593	38	45
120	1348-0594	38	45
120	1348-0595	38	45
120	1348-0596	38	45
120	1348-0597	38	45
120	1348-0598	38	45
120	1348-0599	38	45
120	1348-0600	38	45

S

2176

2174

2172

2170

2168

2166

2164

2162

2160

2158

2156

2154

2152

2150

2148

2146

2144

2142

2140

2138

2136

2134

2132

2130

2128

2126

2124

2122

2120

N. 42 ST

ST

W. LLOYD

UNRECORDED

348-34

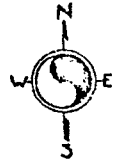
S.W. 13-7-21  
ATLAS P. 327

327

327-22

Vol. 32 Page 8  
1st Cont'n Boulevard Park

W Wright St.



2476 2474	118	30	327-0581	118	1	327-0552	2477 2475
			G.-15173			G.-15174	
2472 2470		29	-0580		2	-0553	2473 2471
			G.-15172			G.-15175	
2466		28	-0579		3	-0554	2469 2467
			G.-15171			G.-15176	
2462 2460		27	-0578		4	-0555	2463 2461
			G.-15170			G.-15177	
2456 2454		26	-0577		5	-0556	2457 2455
			G.-15169			G.-15178	
2452 2450		25	-0576		6	-0557	2451
			G.-15168			G.-15179	
2444		24	-0575		7	-0558	2447 2445
			G.-15167			G.-15180	
2440		23	-0574	7	8	-0559	2441 2439
			G.-15166			G.-15181	
2436 2434		22	-0573		9	-0560	2437 2435
			G.-15165			G.-15182	
2430 2428		21	-0572		10	-0561	2431 2429
			G.-15164			G.-15183	
2424 2422		20	-0571		11	-0562	2425
			G.-15163			G.-15184	
2418 2416		19	-0570		12	-0563	2423 2421
			G.-15162			G.-15185	
2414 2412		18	-0569		13	-0564	2415 2413
			G.-15161			G.-15186	
2408 2406		17	-0568		14	-0565	2409 2407
			G.-15160			G.-15187	
2404 2402		16	-0567		15	-0566	2405 2403
			G.-15159			G.-15188	

W. Meinecke Ave.

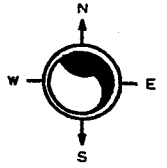
RECORDED

NW 36-8-21  
ATLAS P. 192

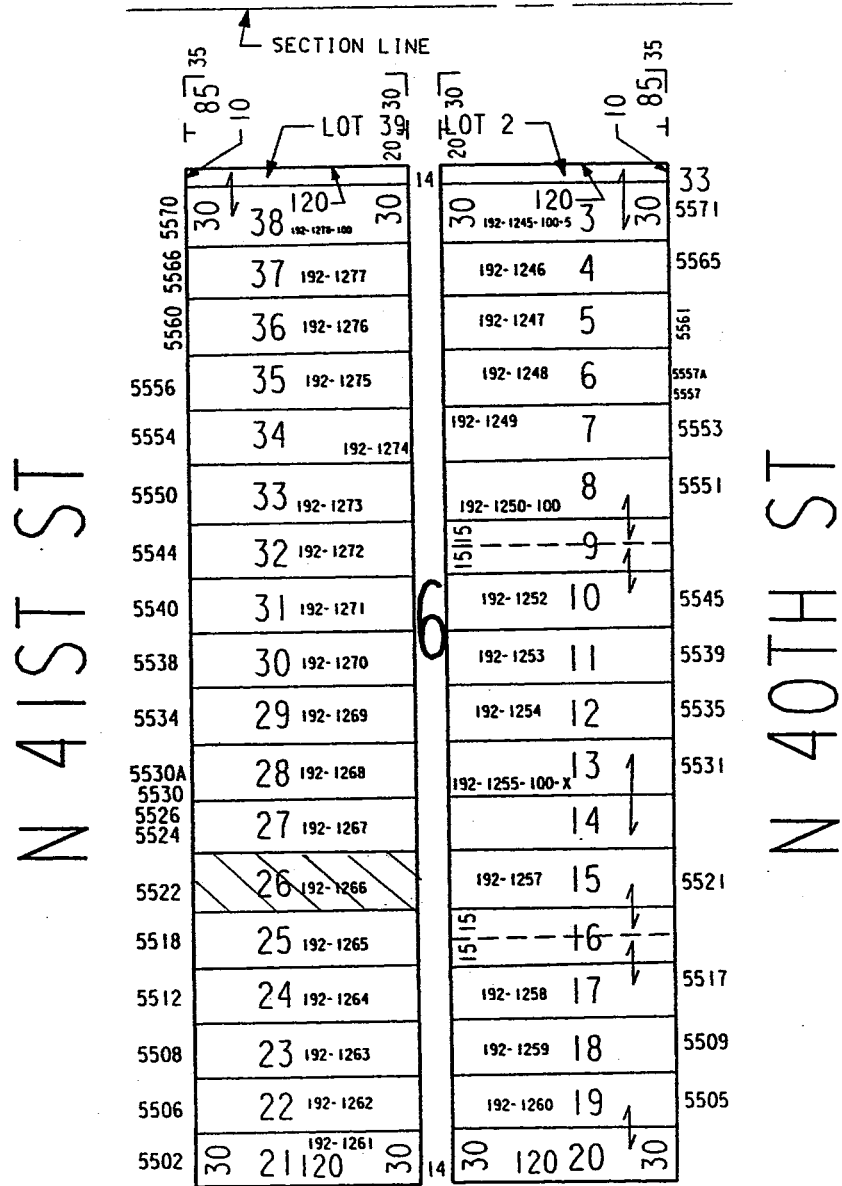
192

192-24  
SCALE 1" = 80'

SAWYER'S ADDITION



W SILVER SPRING DR



W SHERIDAN AV

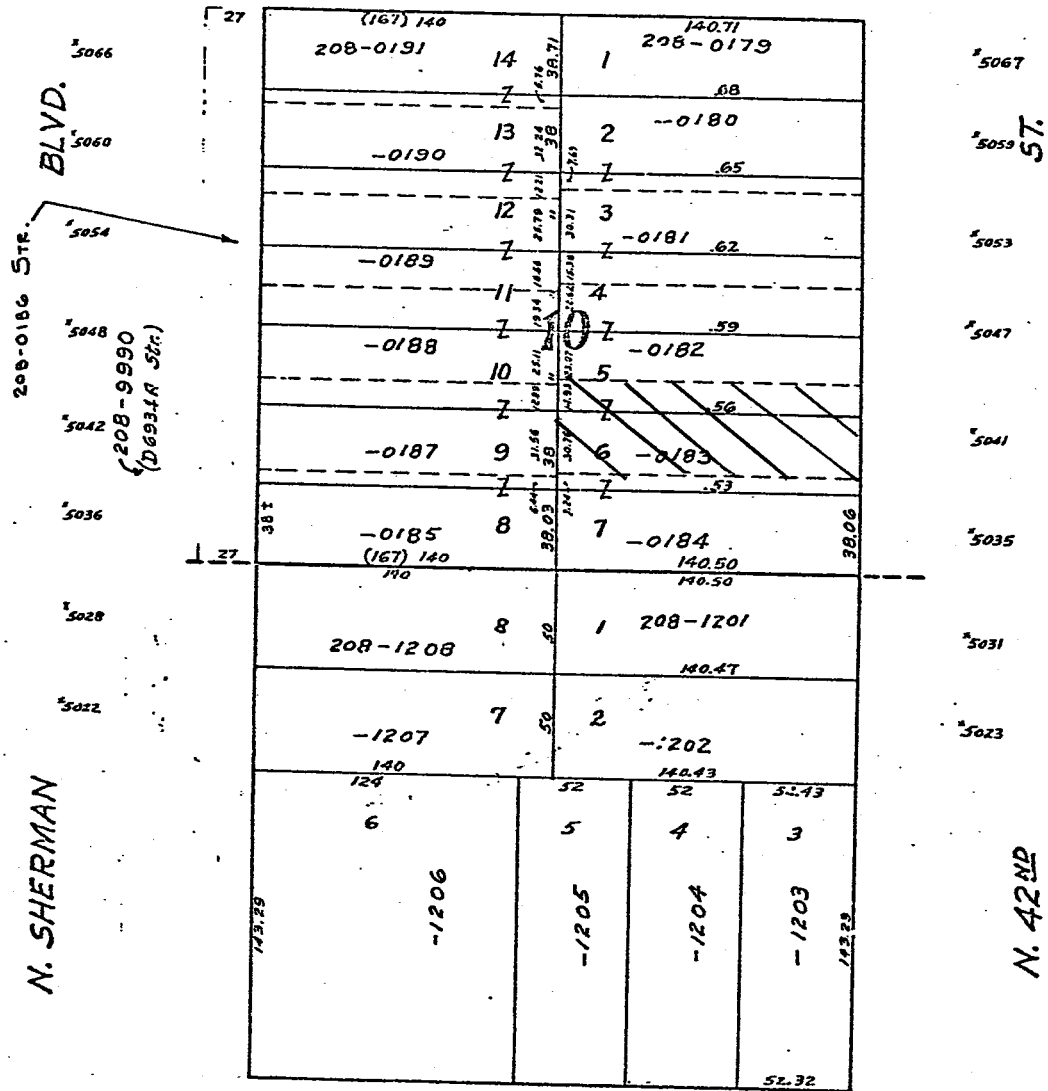
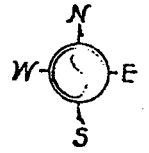


S.W. 36-8-21  
ATLAS P. 208

208  
ASSESSOR'S PLAT No 106

208-33

W. LANCASTER AVE.  
4205



MICROFILMED

W. FAIRMOUNT AVE.  
4230 4218 4212 4200

PARADIS SUBD.

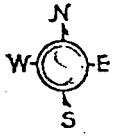
BEING A RESURD. OF LOTS 1, 2 & ALL OF LOT 3 ETC.  
THE W/2' IN BLK 11 ASSESSOR'S PLAT No. 106  
VOL. 56 P. 44

S.W. 36-8-21  
Atlas P. 208

W. VILLARD 208  
4229

AVE.  
4205

208-32



BLVD.  
5176

208-0119 STR.  
N. SHERMAN  
5108  
5114  
5120

MICROFILMED

140		141.28
5108	208-0408	16 208-0423 .25
5182	-0409	2 15 -0422 .21
5176	-0410	3 14 -0421 .17
5170	-0411	4 13 -0420 .14
5164	-0412	5 12 -0419 .10
5158	-0413	6 11 -0418 .07
5152	-0414	7 10 -0417 .03
5146	-0415	8 9 -0416 .01
5140	208-0126	16 1 208-0110 140.98
5136	-0125	15 2 -0111 .95
5130	-0124	14 3 -0112 .92
5124	-0123	13 4 -0113 .89
5120	-0122	12 5 -0114 .86
5114	-0121	11 6 -0115 .83
5108	-0120	10 7 -0116 .80
46.51	-0118	9 8 -0117 130.77
46.51	(167) 140	(167) 140

5189  
5183 ST.  
5177  
5171  
5165  
5159  
5153  
5147  
5141  
5141  
5137  
5131  
5125  
5119  
5115  
5109  
N. 42ND

LAZYNSKI'S SUBD. NO. 1  
BEING A SUBD. OF LOTS 1 & 2 BLK 3 & 4 PART OF  
LOT 2 BLK 2 ASSESSOR'S PLAT NO. 106 N.W. 1/4  
1/4 SEC. 36-8-21  
VOL. 54 - P. 21

ASSESSOR'S PLAT NO. 106

W. LANCASTER

AVE.

S.E. 2-7-21  
ATLAS P. 248

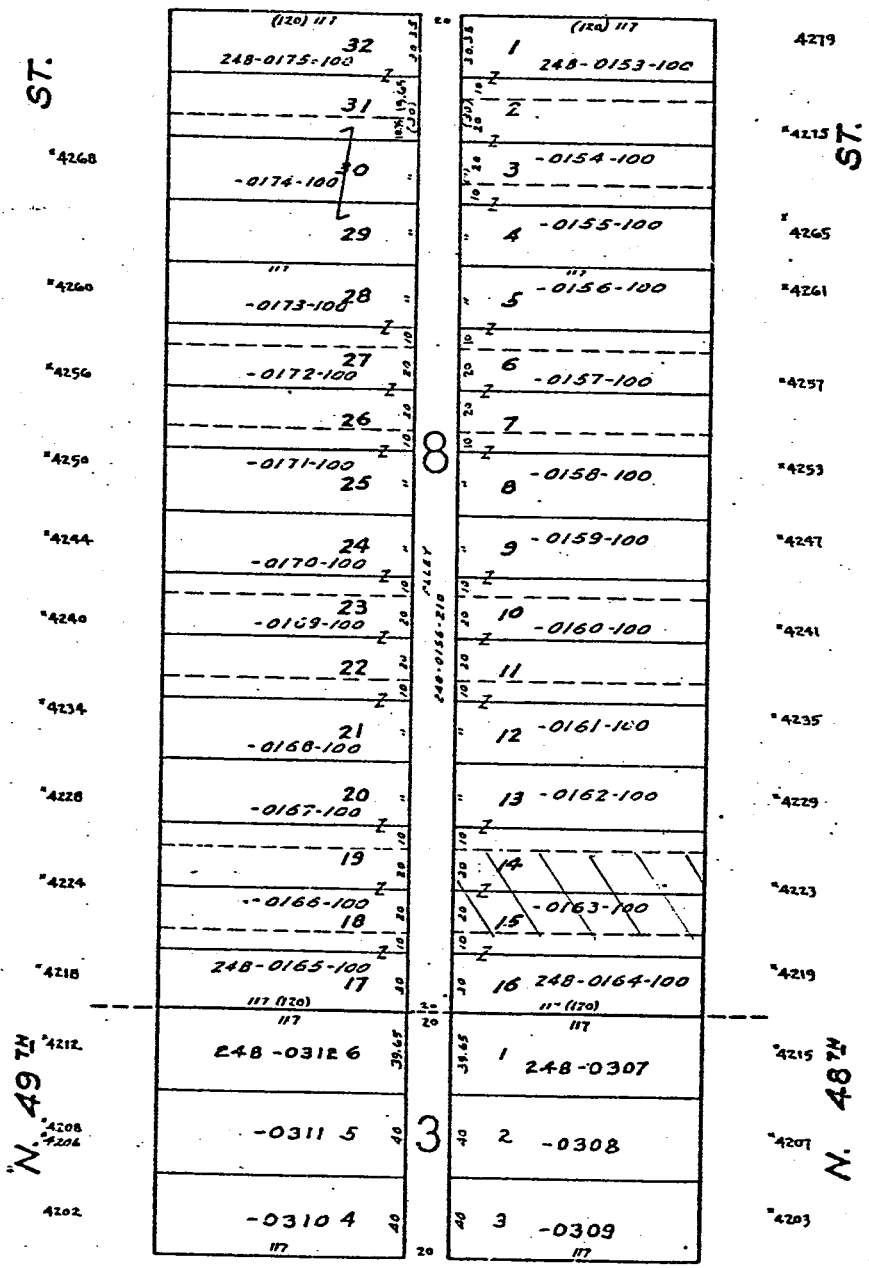
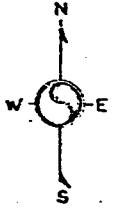
248

248-15

NORTH MILW. IMPR. CO'S. SUBD. NO. 1  
VOL. 19 PAGE 28

W. MARION ST.

4825



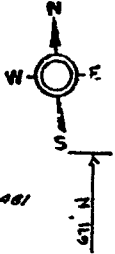
W. HOPE AVE.  
PLEASANT GARDENS  
VOL. 37 PAGE 47

TR-040 B-006 10-2-02

SW-23-8-21  
ATLAS P. 139

# 139 LANDS

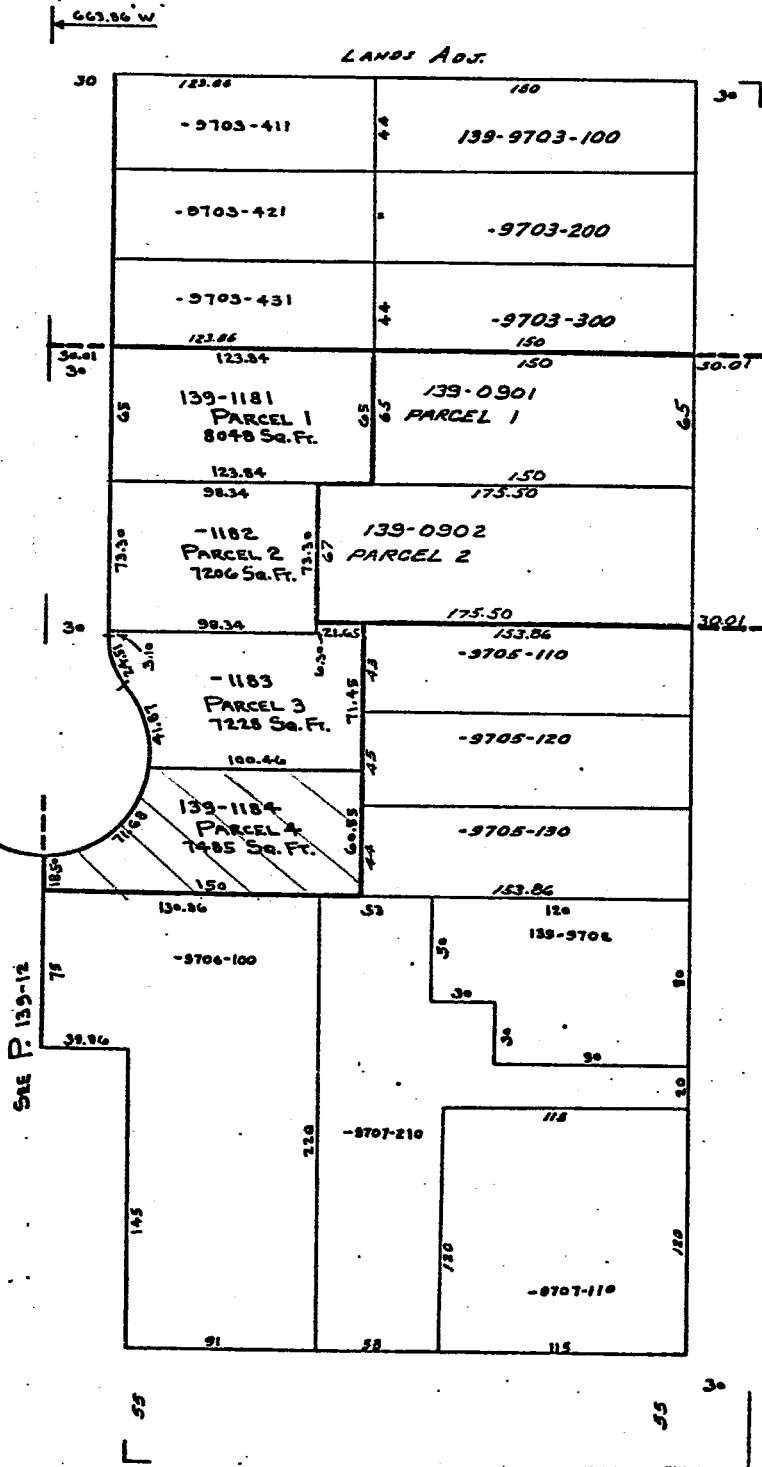
139-05



C. S. MAP NO. 2738

ST.

N. 53<sup>RD</sup>



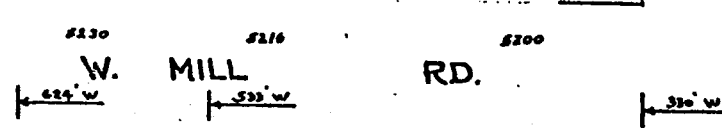
ST.

C. S. M. NO. 2336

LANDS

N. 52<sup>RD</sup>

MICROFILM 3-30-76



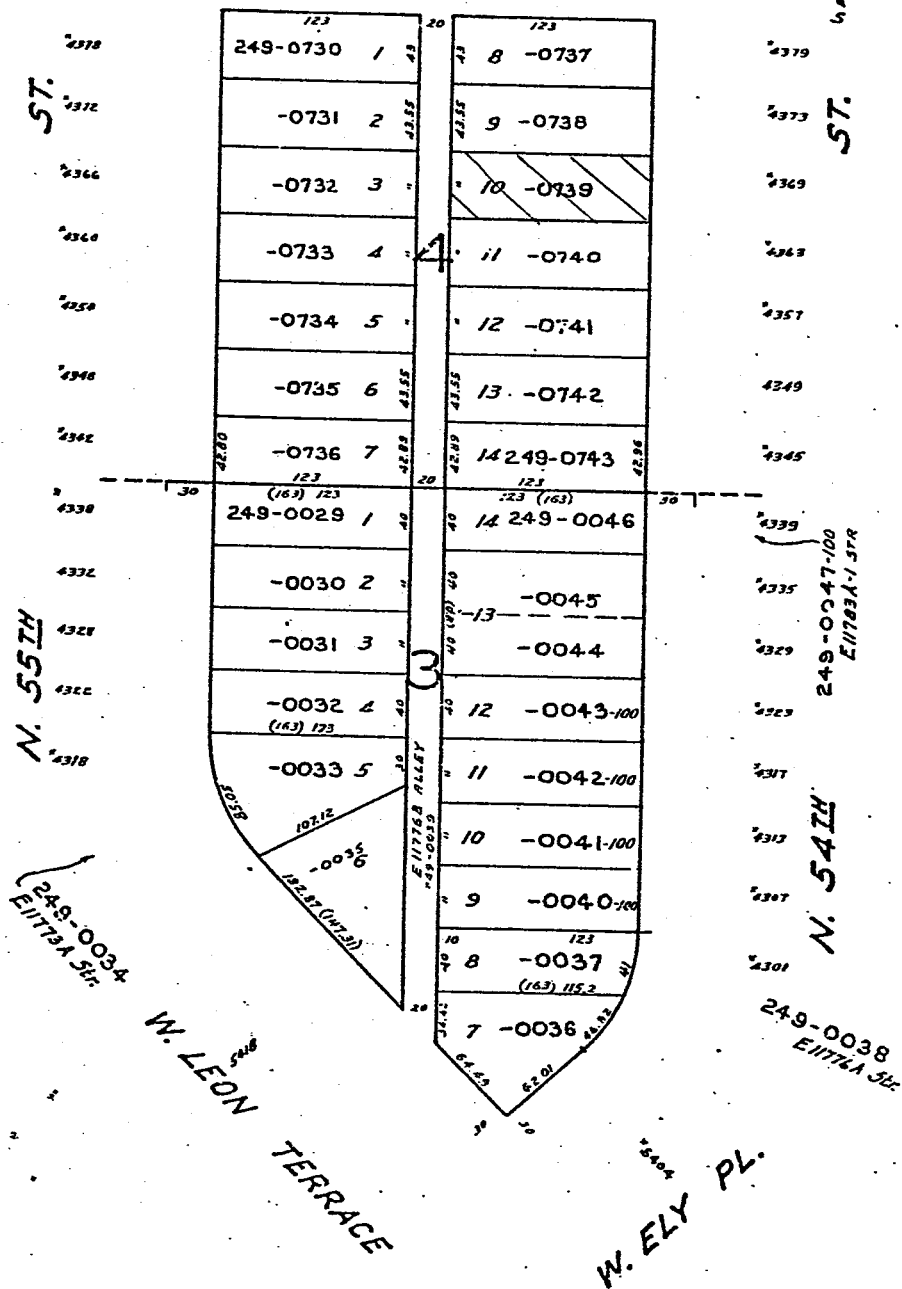
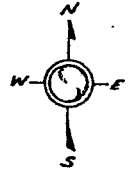
SW 2-7-21  
ATL. P. 249

249  
LONGVIEW  
VOL. 46 PAGE 49

249-11

1 IN. = 80 FT.

W. CONGRESS ST.



SE 27-8-21  
ATLAS No. 174

174

174-09

FLORIST ACRES  
VOL. 75 Pgs. 21 & 22

W. FLORIST

AVE.  
6107



ST.

ST.

5974	110 174-0132 22	110 174-0111 1	5968
	-0131 21	-0112 2	
5960	-0130 20	-0113 3	5961
5954	-0129 19	-0114 4	5955
5946	-0128 18	-0115 5	5947
5938	-0127 17	-0116 6	5939
5932	-0126 16	-0117 7	5933
5924	-0125 15	-0118 8	5925
5918	-0124 14	-0119 9	5919
5910	-0123 13	-0120 10	5911
5902	-0122 12	-0121 11	5903

N. 62<sup>nd</sup>

ST.

N.

REPRODUCED

W. BOBOLINK

AVE.

SE 27-8-21  
ATLAS P. 174

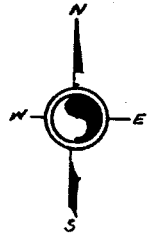
174

174-21

# SILVER SPRING PARK ADD.

VOL. 47 PAGE 63

## W. THURSTON AVE.



ST.

\*5674-76

\*5668

\*5662-4

\*5656-8

\*5652-4

\*5646-8

\*5642-44

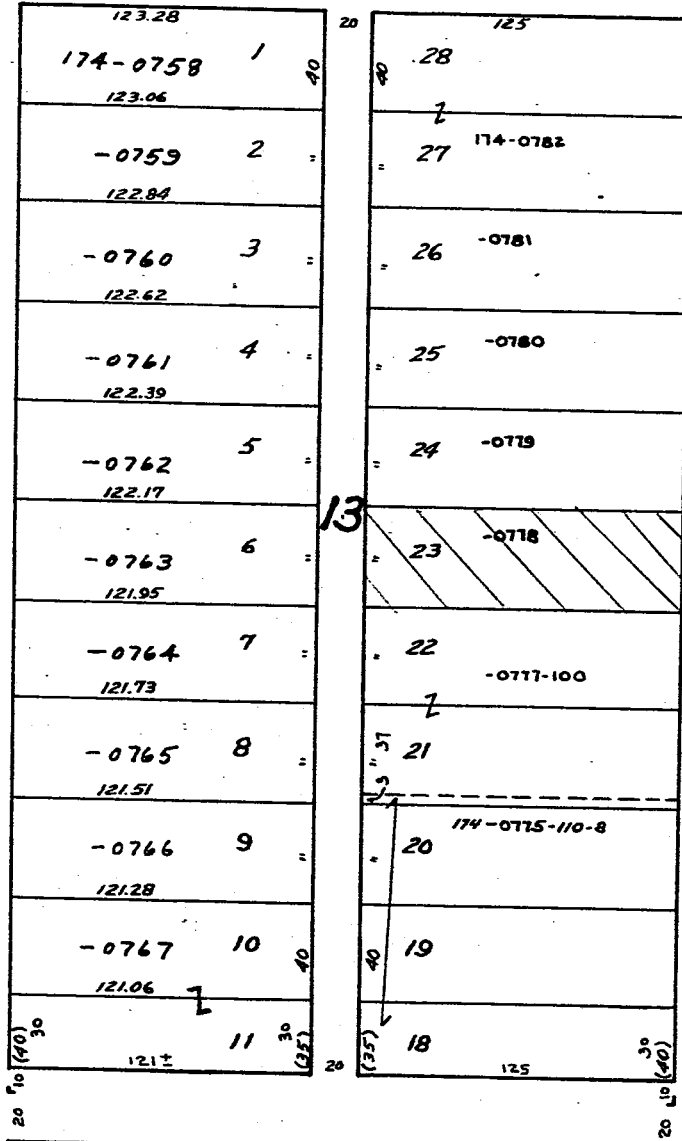
\*5636-38

\*5630-32

\*5622

N. 65 TH

5608-10



ST.

5671

\*5663

\*5659

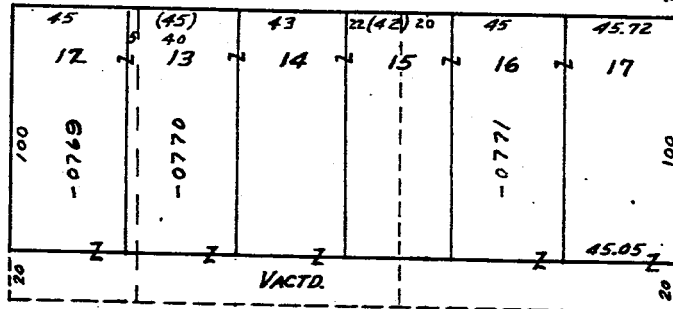
5653

5647

5639

5633

N. 64 TH



6432 6426 6420 6414 6410 6402  
W. SILVER SPRING DR.

SE-3-7-21  
ATLAS P. 250

226

250-19

# ZINGEN & BRAUN'S RUBY PARK

W. CONGRESS ST.  
2529



ST.

4378

4344

4352

4348

4342

4336

4330

4326

4320

4314

4308

N. 66<sup>TH</sup>

130	28	20	130
226-1092		4378	1 226-1068
-1091	27	4378	2 -1069-100
-1090	26	4378	3 -1069-200
-1089	25	4378	4 -1070
-1088	24	4378	5 -1071
-1088	23	4378	6 -1072
-1087	22	4378	7 -1073
-1086	21	4378	8 -1074
-1085	20	4378	9 -1075
-1084	19	4378	10 -1076
-1083	18	4378	11 -1077
-1082	17	4378	12 -1078
-1081	16	4378	13 -1079
-1080	15	4378	14 -1080
130		20	130

4377

4371

4365

4371

4353

4349

4341

4341

4331

4325

4321

4315

4311

4303

ST.

N. 65<sup>TH</sup>

W. MARION ST.  
6530

ST.

MICROFILMED 11-12-81



N.W.-3-7-21  
ATLAS P. 225

225

SHERMAN GARDENS NO. 2  
VOL. 45 PAGE 64

W. RUBY  
7029

AVE.  
7005

225-12



ST.

4474

4468

4462

4458

4452

4446

4442

4436

4430

4426

4420

N. 71<sup>ST</sup>

125.51 225-1159 1	20	125.51 30
.38 -1140 2		.38 29 225-1166
.25 -1141 3		.35 28 -1165
125.12 -1142 4		125.12 27 -1164
124.99 -1143 5		124.99 26 -1163
.86 -1144 6	221	.86 25
.72 -1145 7		.75 24 -1162
.59 -1146 8		.60 23 -1161
.46 -1147 9		.47 22 -1160
.33 -1148 10		.34 21 -1159
.20 -1149 11		.21 20 -1158
124.07 -1150 118.54 12	30	124.08 19 -1157 118.55

ST.

4469

4463

4457

4449

4443

4437

4431

4427

4421

N. 70<sup>TH</sup>

45.99 13 119.84 -1151	44 14 -1152	- 15 -1153	- 16 -1154	44 17 119.84 -1155	45.70 18 119.85 -1156
--------------------------------	-------------------	------------------	------------------	-----------------------------	--------------------------------

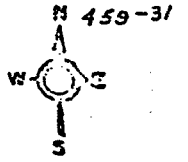
MICROFILMED 9-3-70

7030-32 7016 7020 7012-14 7006-08 7000-7002  
W. CONGRESS ST.

N.W.-6-6-22  
ATLAS P. 459

459

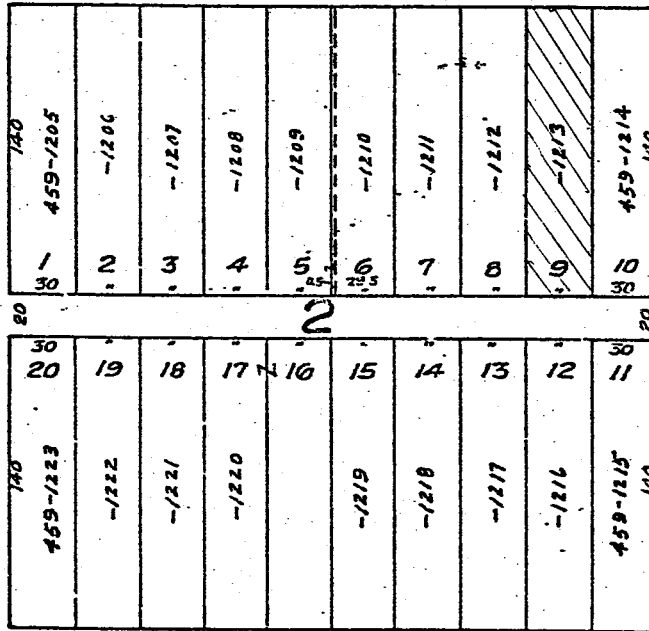
MARK S. TYSON'S SUBD.



W. GREENFIELD AVE.  
2539 2535 2529 2525 2523 2517 2515 2511 2507 2501  
2537 2535 2529 2525 2521 2515 2515 2509 2505

ST.

S. 20<sup>TH</sup> ST.  
1432



ST.

S. 25<sup>TH</sup> ST.

2536 2534 2530 2524 2516 2508 2506 2500  
2538 2534 2530 2526 2518 2512 2510 2506 2500  
W. ORCHARD ST.

MICROFILMED

TR 162  
203

12

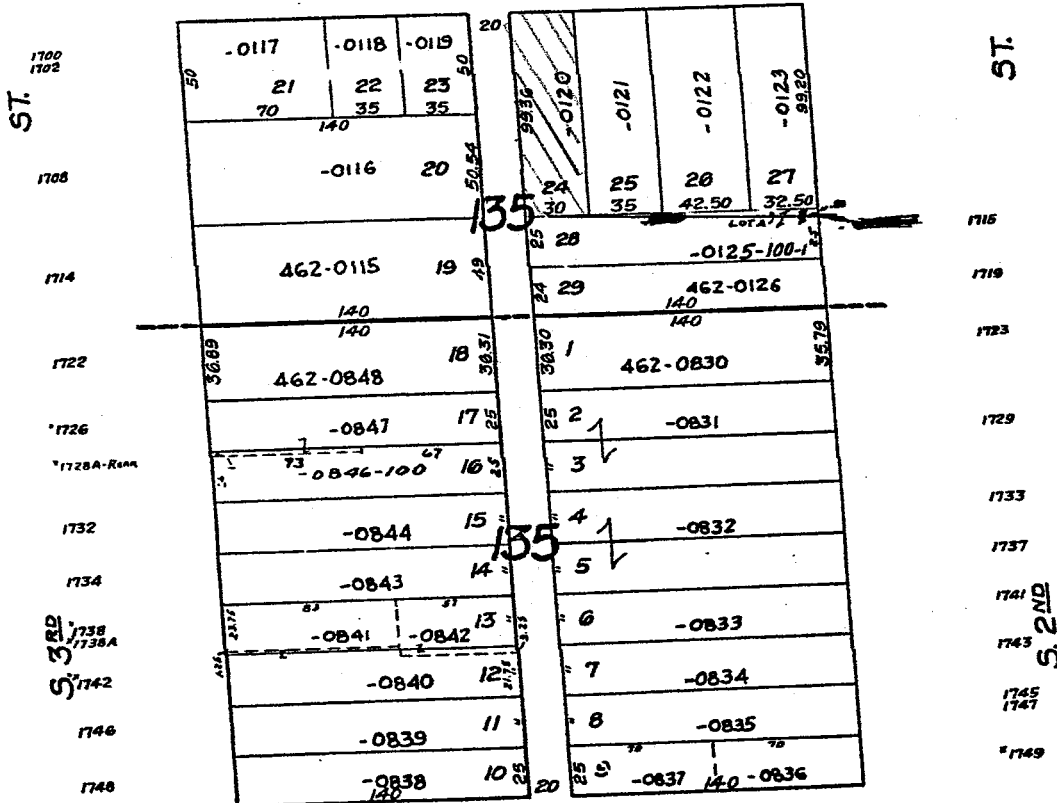
N.E. 5-6-22  
ATLAS P. 462

# 462 ASSESSMENT SUBD. NO. 55

462-16



W. MITCHELL ST.  
229 223 217 215 "211-11A 201 201



W. MAPLE ST.  
214

## JUDGE SMITH'S SUBD.

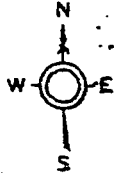
4-3-55

MUSKEGO AVE. HEIGHTS

LANDS

W. BURNHAM

ST.



2217 2215 2211 2205 2181 2179

PLACE

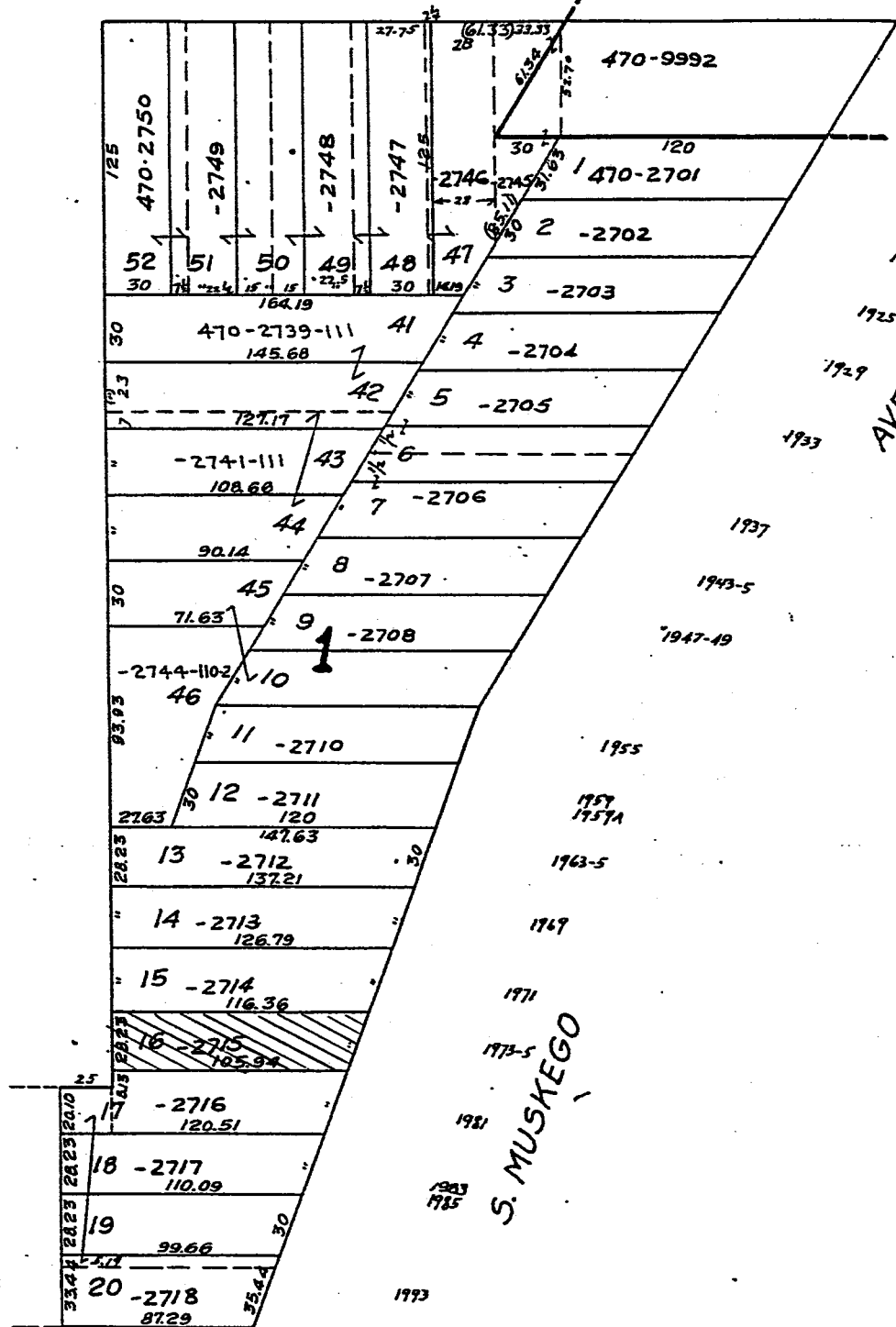
1920

1928  
1930

1938-46

S. 22ND

SEE PAGE 470-19



1911  
1914  
1917  
1921  
1925  
1929  
1933  
1937  
1943-5  
1947-49

S. MUSKEGO

1973

N.W. 6-6-22  
ATLAS P 459

459

459-21

MARK S. TYSON'S SUBD.

FITZGERALD & BECHER'S SUBD.

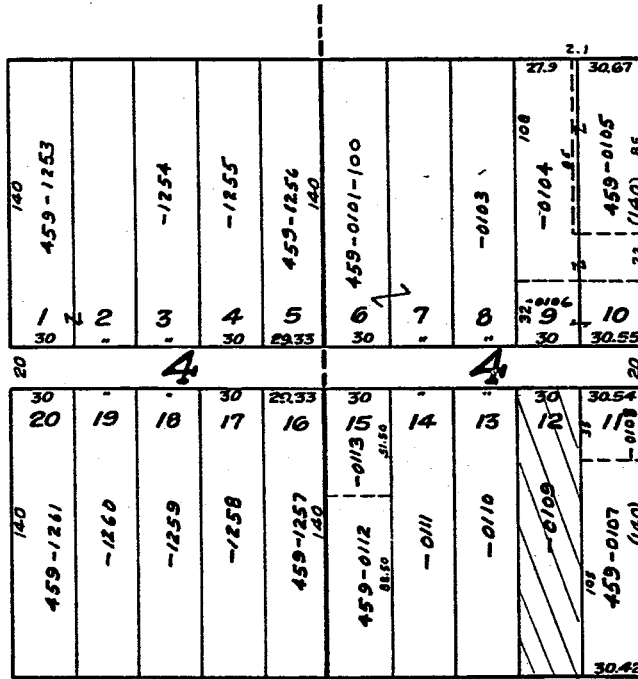


W. GREENFIELD

AVE.

2339 2331 2327 2321 2315 2311 2307 2303  
2335 2325 2309 2305 2301

ST.



1405 ST.

1415  
1417

1425

1429  
S. 23RD

S. 24TH  
1424  
1428  
1438

2336 2334 2328 2324 2320 2316 2312 2308 2304 2300  
W. ORCHARD ST.

4-5-85

7