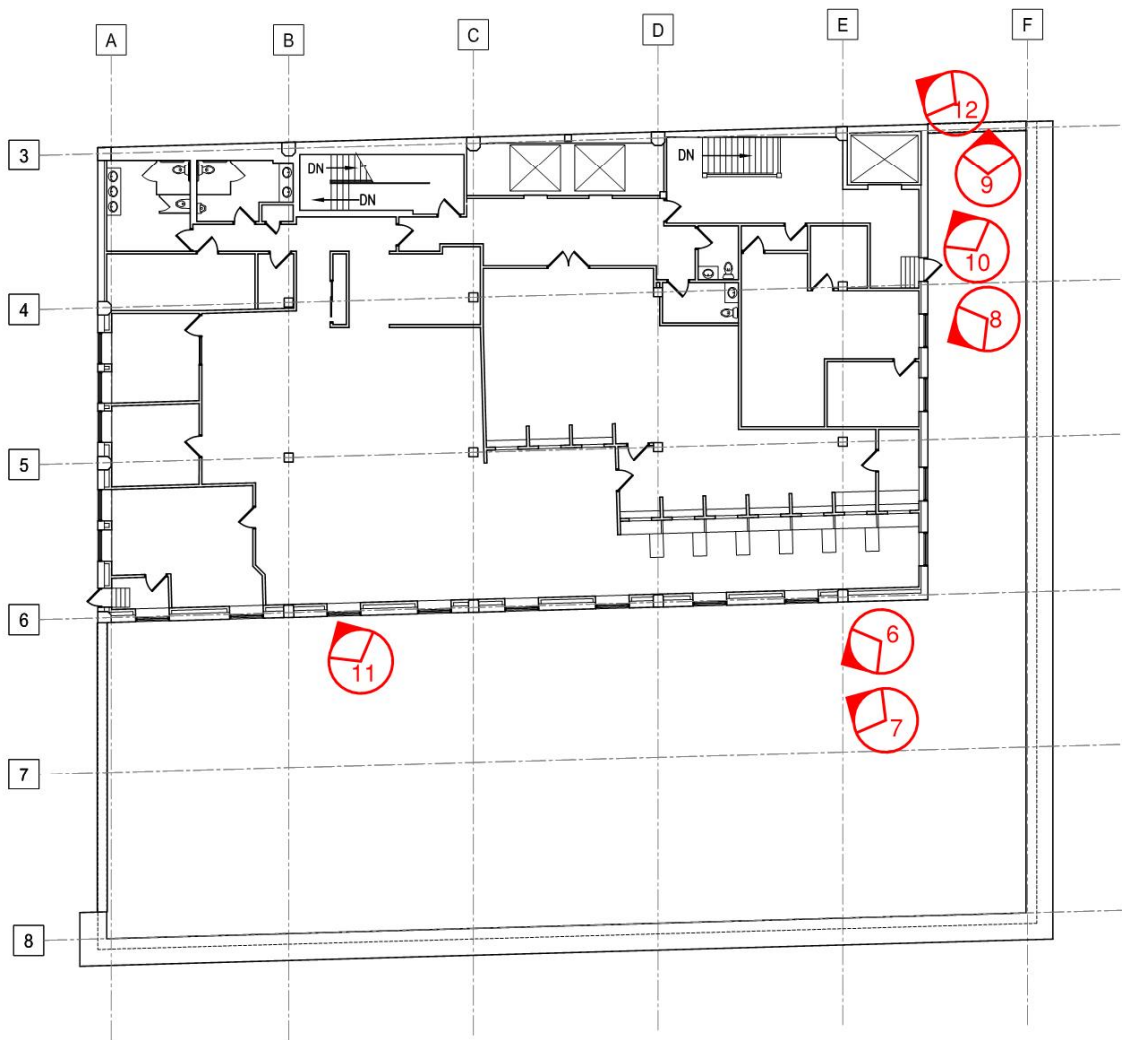


1 1ST FLOOR EXISTING CONDITIONS PLAN





① 5TH FLOOR EXISTING CONDITIONS PLAN





Photo 1 - 5.18.15: South and east facades of Hills Building from corner of 9th and Mitchell



Photo 2 - 12.23.14: Storage Building, east façade, looking northwest



Photo 3 - 5.18.15: Masonry articulation on southeast corner of main building



Photo 4 - 5.18.15: Existing limestone sill on southeast corner



Photo 5 - 5.18.15: Existing limestone cornice on southwest corner



Photo 6 - 12.23.14: Main building roof looking southwest



Photo 7 - 12.23.14: Main building roof looking northwest toward 5th floor



Photo 8 - 12.23.14: 5th floor, east façade



Photo 9 - 5.12.15: Ceramic coping on top of main building roof



Photo 10 - 5.12.15: Stairway to 5th floor roof on north side of main building



Photo 11 - 5.12.15: Window detail, new windows to be installed in non-historic openings



Photo 12 - 5.12.15: View of north building roof, looking northwest



Photo 13 - 5.12.15: Fire escape stairs located at west elevation of main building



Photo 14 - 5.12.15: Fire escape stairs on northeast corner of main building



Photo 15 - 5.18.15: Window details on east façade of main building



Photo 16 - 12.23.14: Storefront windows on east elevation of building



Photo 17 - 12.23.14: Interior view of storefront windows, looking southeast



Photo 18 -12.23.14: Building entry on east elevation



Photo 19 - 5.18.15: Main entrance on south elevation, canopy to remain during construction



Photo 20 - 12.23.14: North facades, storage building and main building



Photo 21 - 12.23.14: North elevation entry of storage building



Photo 22 - 5.18.15: Side entrance on north elevation of storage building



Photo 23 - 5.18.15: Overhead door on west elevation of storage building



Photo 24 - 12.23.14: North façade of main building and vacated alley between main building and storage building



Photo 25 - 05.12.15: Big Ben Ghost Signage



Photo 26 - 5.12.15: West façade, main building, and public walkway/ vacated alley