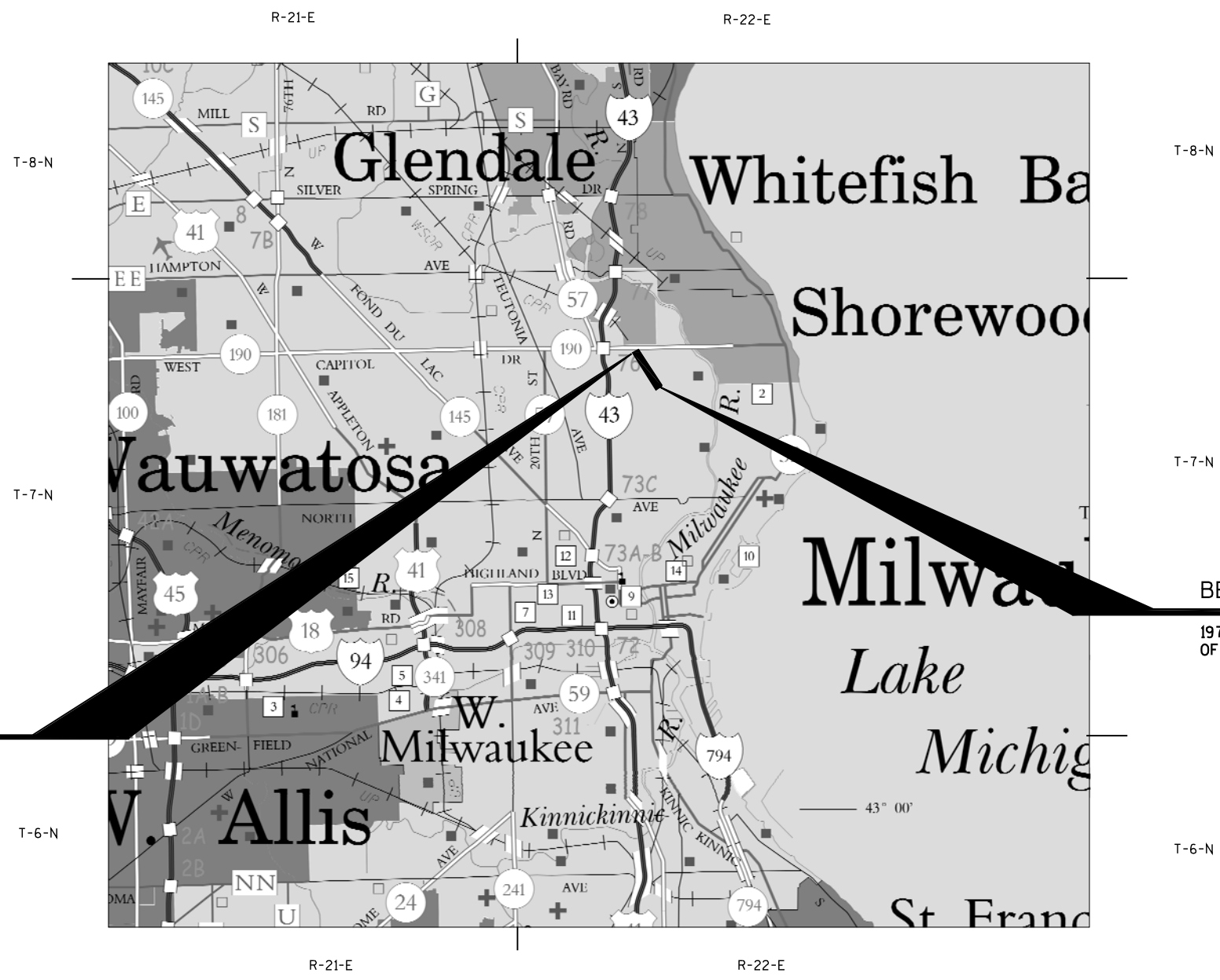


R/W PROJECT NUMBER 2984-34-21	SHEET NUMBER 4.0	TOTAL SHEETS 4
FEDERAL PROJECT NUMBER -----		
PLAT OF RIGHT-OF-WAY REQUIRED FOR BEER LINE BICYCLE TRAIL EXTENSION N. RICHARDS ST. TO CAPITOL DR.		
NON-HWY 2984-34-71		MILWAUKEE COUNTY
CONSTRUCTION PROJECT NUMBER 2984-34-71		

FINAL DRAFT
07/07/2014

CONVENTIONAL ABBREVIATIONS	
ACCESS POINT/ DRIVEWAY CONNECTION	AP
ACCESS RIGHTS	AR
ACRES	AC.
AND OTHERS	ET. AL.
CENTERLINE	C/L
CERTIFIED SURVEY MAP	CSM
CORNER	COR.
DOCUMENT	DOC.
EASEMENT	EASE.
HIGHWAY EASEMENT	H.E.
LAND CONTRACT	LC
MONUMENT	MON.
PAGE	P.
PERMANENT LIMITED EASEMENT	PLE
PROPERTY LINE	PL
RECORDED AS	(100')
REFERENCE LINE	R/L
RELEASE OF RIGHTS	ROR
REMAINING	REM.
RIGHT-OF-WAY	R/W
SECTION	SEC.
STATION	STA.
TEMPORARY LIMITED EASEMENT	TLE
VOLUME	V.
CURVE DATA	
LONG CHORD	LCH
LONG CHORD BEARING	LCB
RADIUS	R
DEGREE OF CURVE	D
CENTRAL ANGLE OR DELTA	DELTA
LENGTH OF CURVE	L
TANGENT	TAN
CONVENTIONAL SYMBOLS	
FOUND IRON PIPE/PIN	UP (IF UNLESS NOTED)
R/W MONUMENT	○ (SET)
R/W STANDARD	△ (SET)
SIGN	ISIGN
SECTION CORNER MONUMENT	●
SECTION CORNER SYMBOL	○
FEE (HATCH VARIES)	NO ACCESS (BY PREVIOUS ACQUISITION/CONTROL)
TEMPORARY LIMITED EASEMENT	NO ACCESS (BY ACQUISITION)
PERMANENT LIMITED EASEMENT	NO ACCESS (BY STATUTORY AUTHORITY)
R/W BOUNDARY POINT	SECTION LINE
PARCEL NUMBER	QUARTER LINE
UTILITY PARCEL NUMBER	SIXTEENTH LINE
SIGN NUMBER (OFF PREMISE)	EXISTING CENTERLINE
BUILDING	PROPOSED REFERENCE LINE
	PARALLEL OFFSET
CONVENTIONAL UTILITY SYMBOLS	
WATER	W
GAS	G
TELEPHONE	T
OVERHEAD	OH
TRANSMISSION LINES	E
ELECTRIC	TV
CABLE TELEVISION	FO
FIBER OPTIC	SAN
SANITARY SEWER	SS
STORM SEWER	NON COMPENSABLE
POWER POLE	COMPENSABLE
TELEPHONE POLE	COMPENSABLE
TELEPHONE PEDESTAL	COMPENSABLE
ELECTRIC TOWER	COMPENSABLE



BEGIN RELOCATION ORDER
197.29' N. OF AND 3.81' E. OF THE E COR.
OF SEC. 8, T7N, R22E

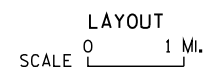
END RELOCATION ORDER
99.55' N. OF AND 806.60' E. OF THE N.
COR. OF SEC. 8, T7N, R22E

NOTES

COORDINATES AND BEARINGS ON THIS PLAT ARE ORIENTED TO THE WISCONSIN COUNTY COORDINATE SYSTEM, MILWAUKEE COUNTY ZONE, NAD 83 (19...) ADJUSTMENT. THE COORDINATES SHOWN ARE GRID COORDINATES AND ARE TO BE USED AS GRID OR GROUND VALUES ON THIS PLAT.

RIGHT-OF-WAY MONUMENTS WILL BE PLACED PRIOR TO THE COMPLETION OF THE PROJECT.

RIGHT-OF-WAY BOUNDARIES ARE DEFINED WITH COURSES OF THE PERIMETER OF THE HIGHWAY LANDS REFERENCED TO THE U.S. PUBLIC LAND SURVEY SYSTEM OR OTHER SURVEYS OF PUBLIC RECORD.



TOTAL NET LENGTH OF CENTERLINE = 0.569 MI.

K. Singh & Associates, Inc.
ENGINEERS, SCIENTISTS, & ENVIRONMENTAL CONSULTANTS
3636 N. 124th Street
Wauwatosa, WI 53222
Phone: (262) 821-1171 www.ksaconsultants.com

I HEREBY CERTIFY THAT THIS PLAT MEETS ALL REQUIREMENTS OF SECTION 84.095 WISCONSIN STATUTES. THIS PLAT WAS PREPARED BY OR UNDER THE DIRECTION OF:

PAUL A. KUBICEK
R.L.S. #2232
PRINTED NAME SIGNATURE DATE 7-07-2014

REVISION	DATE

ACCEPTED FOR CITY OF MILWAUKEE
DATE: _____ (Signature)

NOTE:
R/W ESTABLISHED FROM ---

AREAS SHOWN IN THE TOTAL ACRES COLUMN MAY BE APPROXIMATE AND ARE DERIVED FROM TAX ROLLS OR OTHER AVAILABLE SOURCES AND MAY NOT INCLUDE LANDS OF THE OWNER WHICH ARE CONTIGUOUS TO THE AREA TO BE ACQUIRED.

SCHEDULE OF LANDS & INTERESTS REQUIRED

PARCEL NUMBER	SHEET NUMBER	OWNER(S)	INTEREST REQUIRED	TOTAL ACRES OR S.F.	R/W ACRES OR S.F. REQUIRED			TOTAL ACRES OR S.F. REM.	P.L.E. T.I. ACRES OR S.F.
					NEW	EXISTING	TOTAL		
1	4.1-4.3	GLENDALE REDEVELOPMENT, LLC, A WISCONSIN LIMITED LIABILITY COMPANY	FEE	6.31	6.31	0.00	6.31	0.00	0.00
2	4.3	CITY OF MILWAUKEE	FEE	0.20	0.20	0.00	0.20	0.00	0.00
3	4.3	MANAGED INVESTMENTS, LLC	PLE	0.22	0.00	0.00	0.00	0.22	800

CONCRETE MON. WITH SEWRPC BRASS CAP
Y: 315,403.548
X: 606519.104

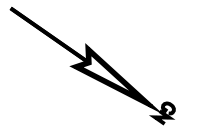
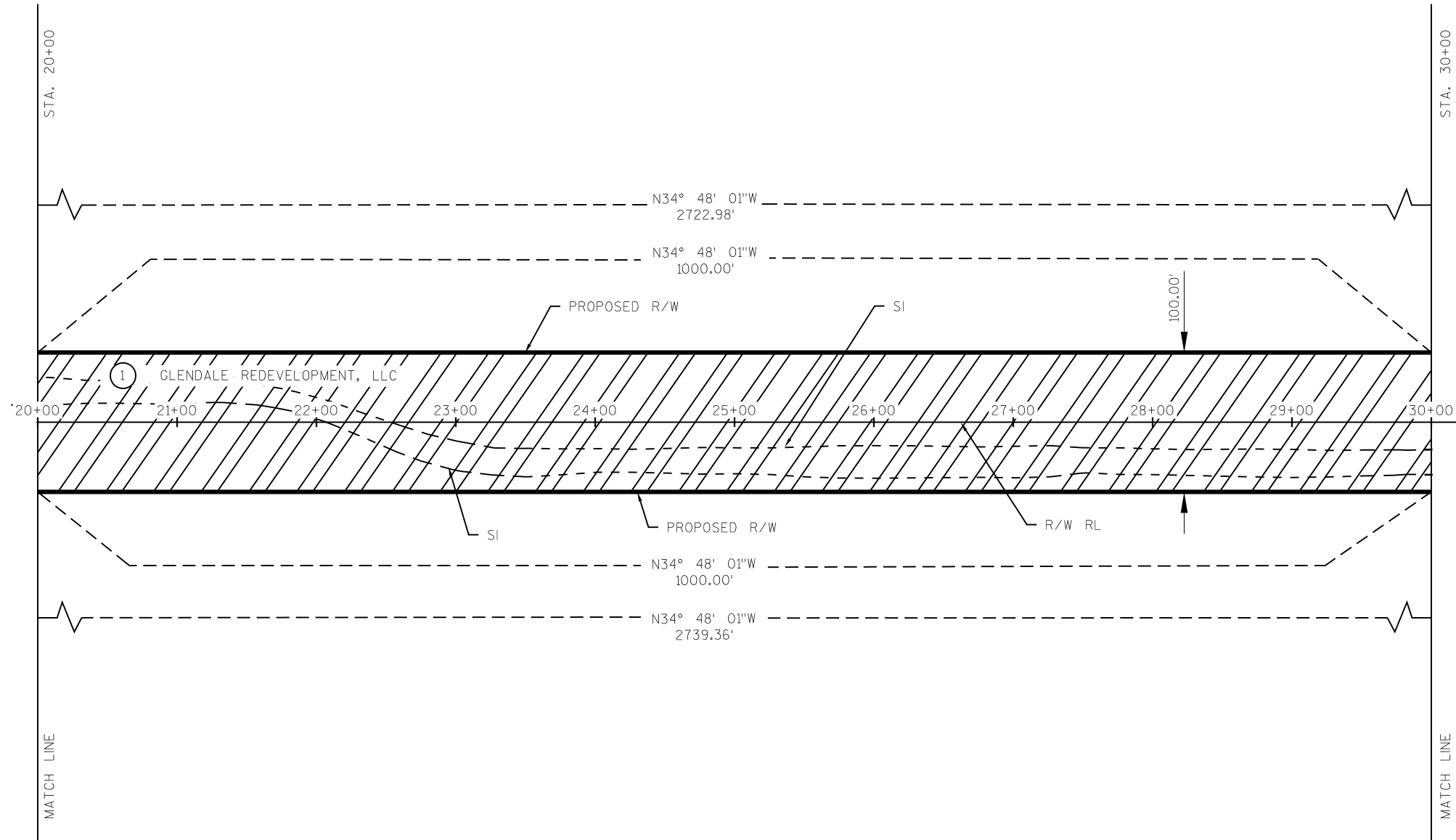
BEGIN RELOCATION ORDER
STA. 10+00.00
Y: 315,600.836
X: 616,522.916

CONCRETE MON. WITH SEWRPC BRASS CAP
Y: 318,053.480
X: 606,570.310

FINAL DRAFT
07/07/2014

REVISION DATE	DATE 07/07/2014	SCALE, FEET 0 50 100	HWY: NON-HWY	STATE R/W PROJECT NUMBER 2984-34-21	PLAT SHEET 4.1
	GRID FACTOR		COUNTY: MILWAUKEE	CONSTRUCTION PROJECT NUMBER 2984-34-71	PS&E SHEET

NOTE:
R/W ESTABLISHED FROM ---



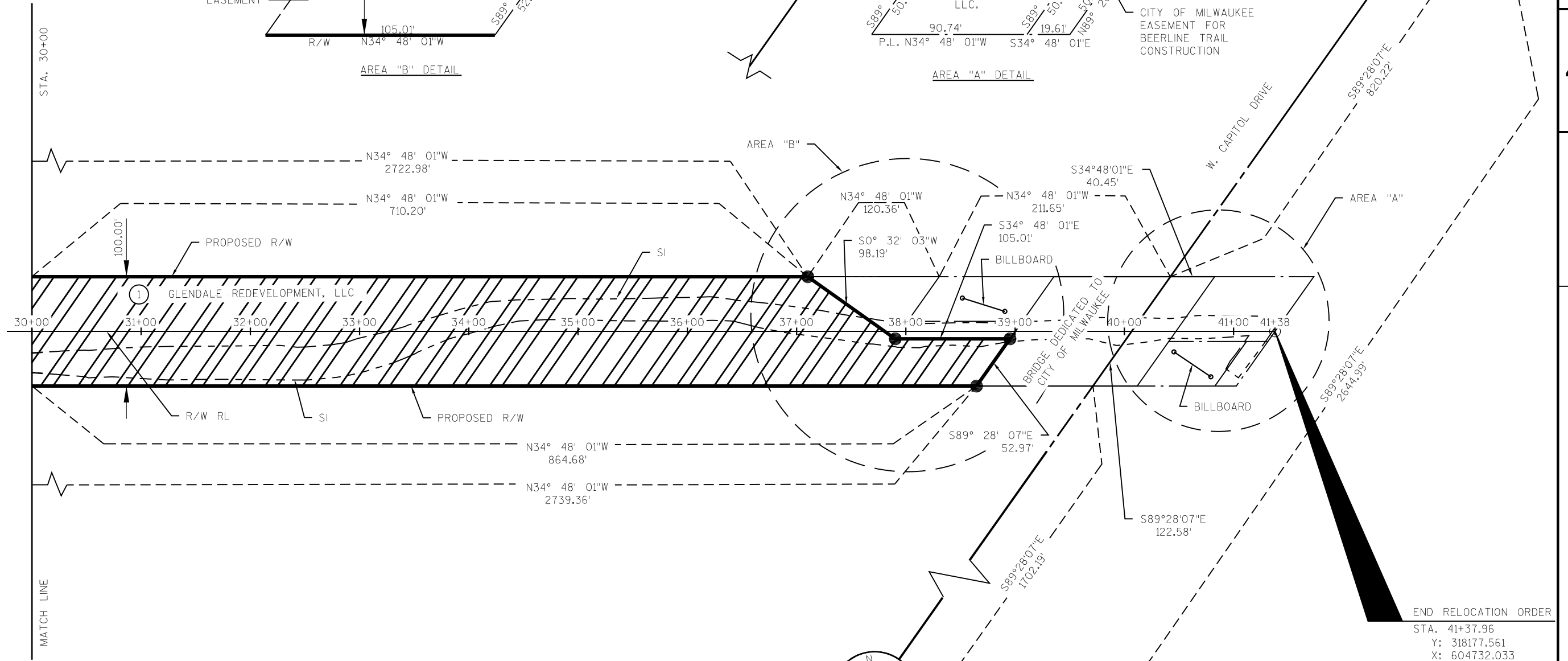
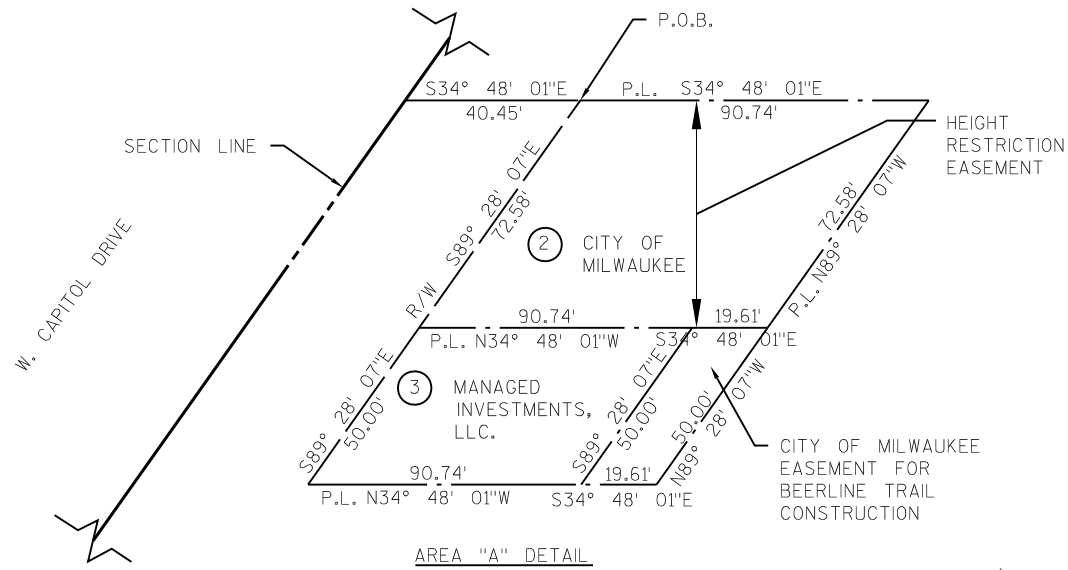
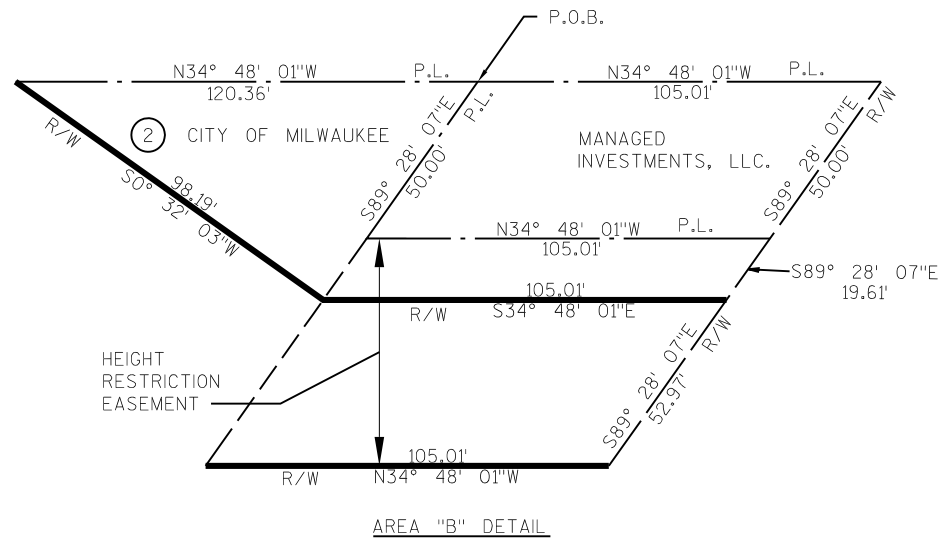
4

4

FINAL DRAFT
07/07/2014

REVISION DATE	DATE 07/07/2014	SCALE, FEET	HWY: NON-HWY	STATE R/W PROJECT NUMBER 2984-34-21	PLAT SHEET 4.2
	GRID FACTOR	0 50 100	COUNTY: MILWAUKEE	CONSTRUCTION PROJECT NUMBER 2984-34-71	PS&E SHEET
					E

NOTE:
R/W ESTABLISHED FROM ---



FINAL DRAFT
07/07/2014

END RELOCATION ORDER
STA. 41+37.96
Y: 318177.561
X: 604732.033

REVISION	DATE	DESCRIPTION

DATE 07/07/2014
GRID FACTOR



HWY: NON-HWY
COUNTY: MILWAUKEE

STATE R/W PROJECT NUMBER 2984-34-21
CONSTRUCTION PROJECT NUMBER 2984-34-71

PLAT SHEET 4.3
PS&E SHEET E