

S.E. 31-7-22 & S.W. 32-7-22  
ATLAS P. 433 & 432

432 & 433

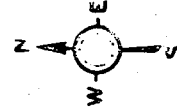
432-46

6.12<sup>TH</sup>  
1005  
1001

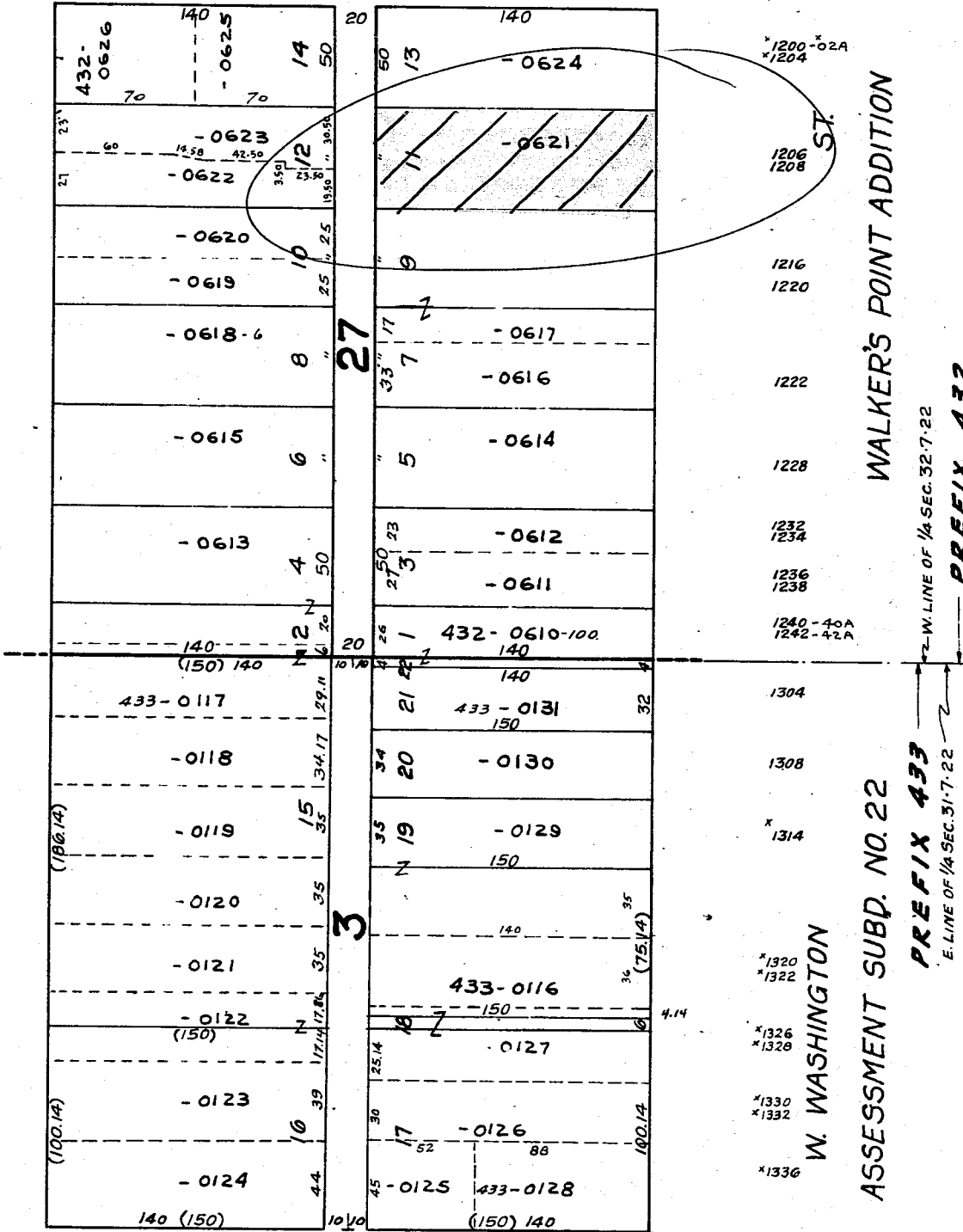
1015

\*1037

ST.



ST. \*1209  
\*1211  
1215  
\*1219 & A  
1223  
1225  
1227  
1231  
1239  
\*1301 & A  
1307  
1313  
1315  
1317  
1321  
1323  
1325  
1327  
1329-31  
W. MINERAL



WALKER'S POINT ADDITION

W. WASHINGTON

PREFIX 433  
E. LINE OF 1/4 SEC. 31-7-22

PREFIX 432  
E. LINE OF 1/4 SEC. 32-7-22

\*1006  
S. 14<sup>TH</sup>

\*1020

\*1032

ST.

433-0133