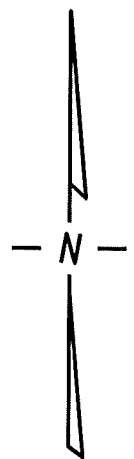
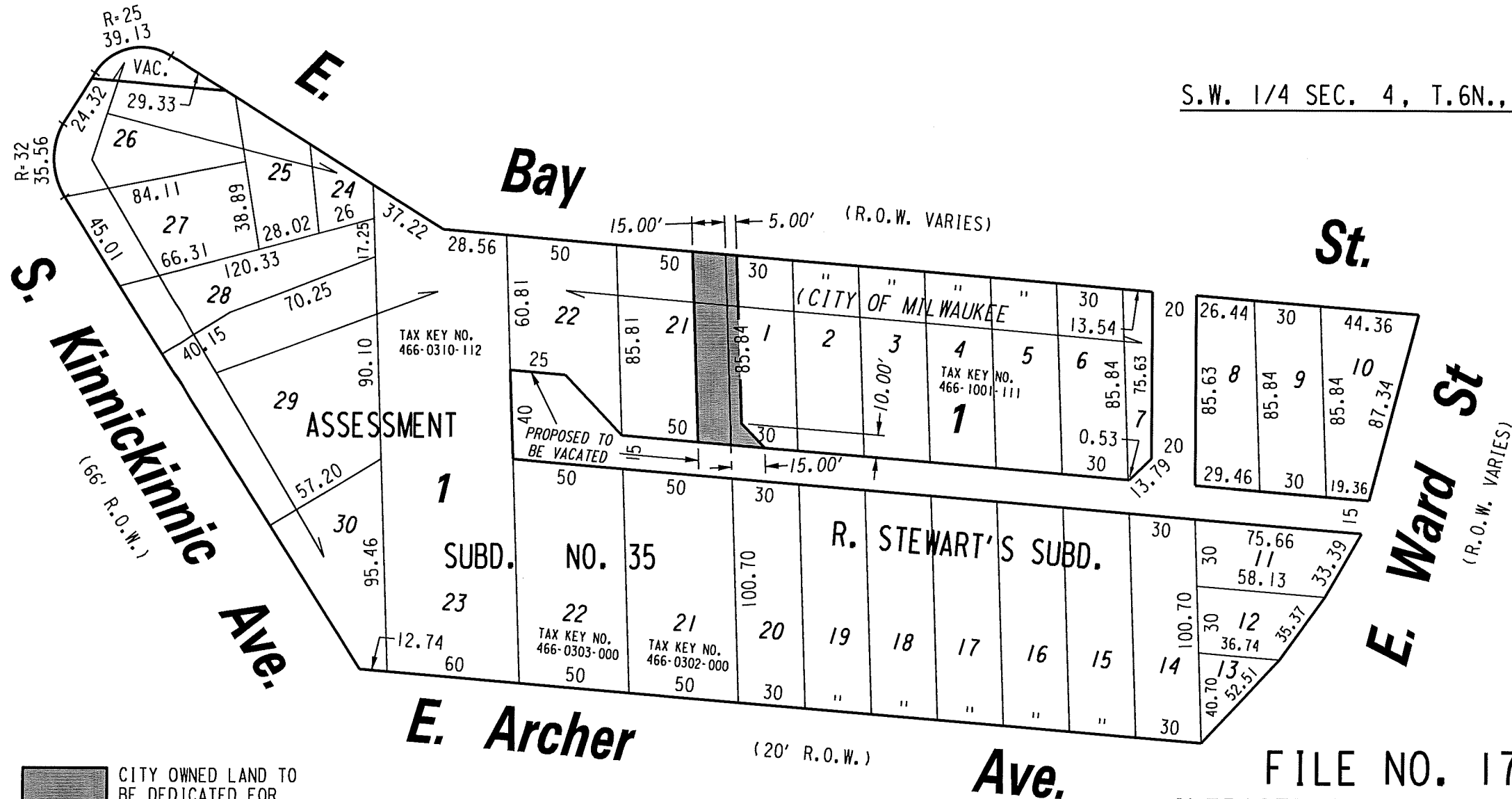


S.W. 1/4 SEC. 4, T.6N., R.22E.

466



 CITY OWNED LAND TO BE DEDICATED FOR PUBLIC ALLEY PURPOSES

FILE NO. 170166  
 INFRASTRUCTURE SERVICES DIVISION  
 MILWAUKEE, WISCONSIN

ASSIGNED TO: W. FUCHS  
 DRAWN BY: W.F.  
 PROJECT/GRANT NO.: WK52337397  
 APPROVED BY:

CH'K'D. BY: W. FUCHS  
 DATE: JULY 12, 2017  
 SCALE: 1" = 60'

*John Vent*  
 CENTRAL DRAFTING & RECORDS MANAGER

*[Signature]*  
 ENGINEER