



Paul Henningsen Alderman, 4th District	City Hall, Room 205 200 East Wells Street Milwaukee, WI 53202-3570	OFFICES 414-286-2221 414-286-3774 EMERGENCY 414-286-2150	FAX 414-286-3456 EMAIL pheni@ci.mil.wi.us	
--	--	--	--	--

(kə lab'ə rāt') collaborate

MEMORANDUM

TO: Laura Engan, Budget Director
Mike Soika, DOA

FROM: Alderman Paul Henningsen *Paul*

RE: Attached Suggestions for Our Bidding on Other Governmental Work
and/or Private Work

DATE: August 21, 2002

I don't know if Alderman D'Amato has asked anyone to pursue this.

If not, or if my approach is different, I wanted to forward the attached from Local 139 because I believe it contains many excellent suggestions.

I assume Mr. Morics won't certify revenue for 2003 for most of the suggestions but maybe a school board contract, if approved before our budget adoption, could count as 2003 revenue.

Question One: how do we approach the school board officially ASAP.

Question Two: how do we officially authorize and direct that DPW pursue those revenue opportunities ASAP.

In that regard, I believe we'll need a common council resolution. So I've asked Barry Zalben, our legislative guru, via a copy of this memo, to call you to discuss the wording of a resolution to be introduced on September 4, 2002.

What do you think of these attached suggestions and how would you like to proceed?

Thank you.

/lap

cc: Wally Morics (Certifier of Revenue), Comptroller
Barry Zalben, LRB ✓

August 23, 2002

Dear Alderman D'Amato,

Thank you for the meeting of 8-2-02 and the time at the Alderman's picnic. I totally agree with the need for the City to find new sources of revenue to help with our yearly budget. The DPW has assets available to lease or rent with an operator to other suburbs, MPS and private companies. These are not surplus resources to be sold by our current administration but assets that are available after our own City services are delivered.

I have taken a number of pictures and made copies of the front covers of manuals for an easier grasp at what I am talking about. The page numbers are as follows:

1. Street Sweeper. Sweeping the streets of Wauwatosa or other cities is a good source of revenue. The 2002 reorganization of our department supposedly created a bigger pool of operators. After we are finished serving the City of Milwaukee we could easily work elsewhere. We would need to finish our training of new operators this fall.
2. Front Load garbage pickup for MPS. For about 15 years we collected all of the Milwaukee schools and averaged about \$190,000 of income to the City's general fund. The MPS contract with private haulers is up this year and they want us back. Bid on this contract - let us do the job!
3. Reach-All (or under bridge crane). Since 1991 we have one of the 3 units operating in Wisconsin. Up to 1996 we also worked for Wisconsin Gas Co, the phone company, various railroads in and out of state and local engineering firms. When we were changed from a revenue producing department to a budgeted one, this practice stopped. We charged \$800 or more a day for this service in 1996 and they paid all expenses. We must do it again.
4. Vac-Con. This is a combination sewer jet and vac-all that we trouble shoot sewers with. Brown Deer is interested in this unit. Currently our own Water department hires a private firm to do this service. Use of our own resources would save money. Don't contract out.

5. Vac-All. This unit can vac only, but it does sewers, leaves and dirt removal and general cleaning.
6. Uni-Mog Vac-All. This unique vehicle is one of only a few in the United States. We have plows, snow blowers and grass cutters that fit on this machine and it is available almost 100% of the year. Since budget cuts, we stopped cleaning electrical services man holes, so it usually sits. It is small and can even work inside buildings.
7. Crane. We have one large crane that we use for heavy lifts such as setting light poles, steel on bridges, fire scenes. We have a much smaller version available to clean sewers.
8. Prentice-Loader (or log loader). This excellent one person machine picks up brush, special pickups, logs, plants trees or moves snow plows. It is one of our most productive assets.
9. Endloader. We use this equipment heavily during leaf season and snow operations. It is waiting to make you money at other times.
10. Grad-All. This hydraulic excavator pulls sidewalks, cleans out water break cuts and is used for sewer construction. Use it, we have 3 machines; 2 work full time April to November.
11. Backhoe Loader. This excellent piece of construction equipment is waiting to earn revenue.
12. Loader (or small tractor). Used very heavily for leaves and snow but can cut high weeds and earn you money. The 2002 budget contracted out our cutting of assessable lots. Give us these jobs back. You save money and can still rent them out with an operator.
13. Posi-Track. This loader is an under used asset. It can even go into swamps and retrieve stolen cars.

Equipment not pictured are our 2 large tow trucks, and our tilt top car hauler. When we are not using them suburbs could call on us.

✓ Towing junk cars to Miller Compressing could be done by us and earn you money.

We want to help. We want to save services because it is our job. The current Mayor has sold a lot of our assets since 1988 but we have saved some of them. Use them to earn revenue. If you have any questions do not hesitate to call. Thank you.

Semper Fi
John A Lindquist
Operating Engineer
Local 139

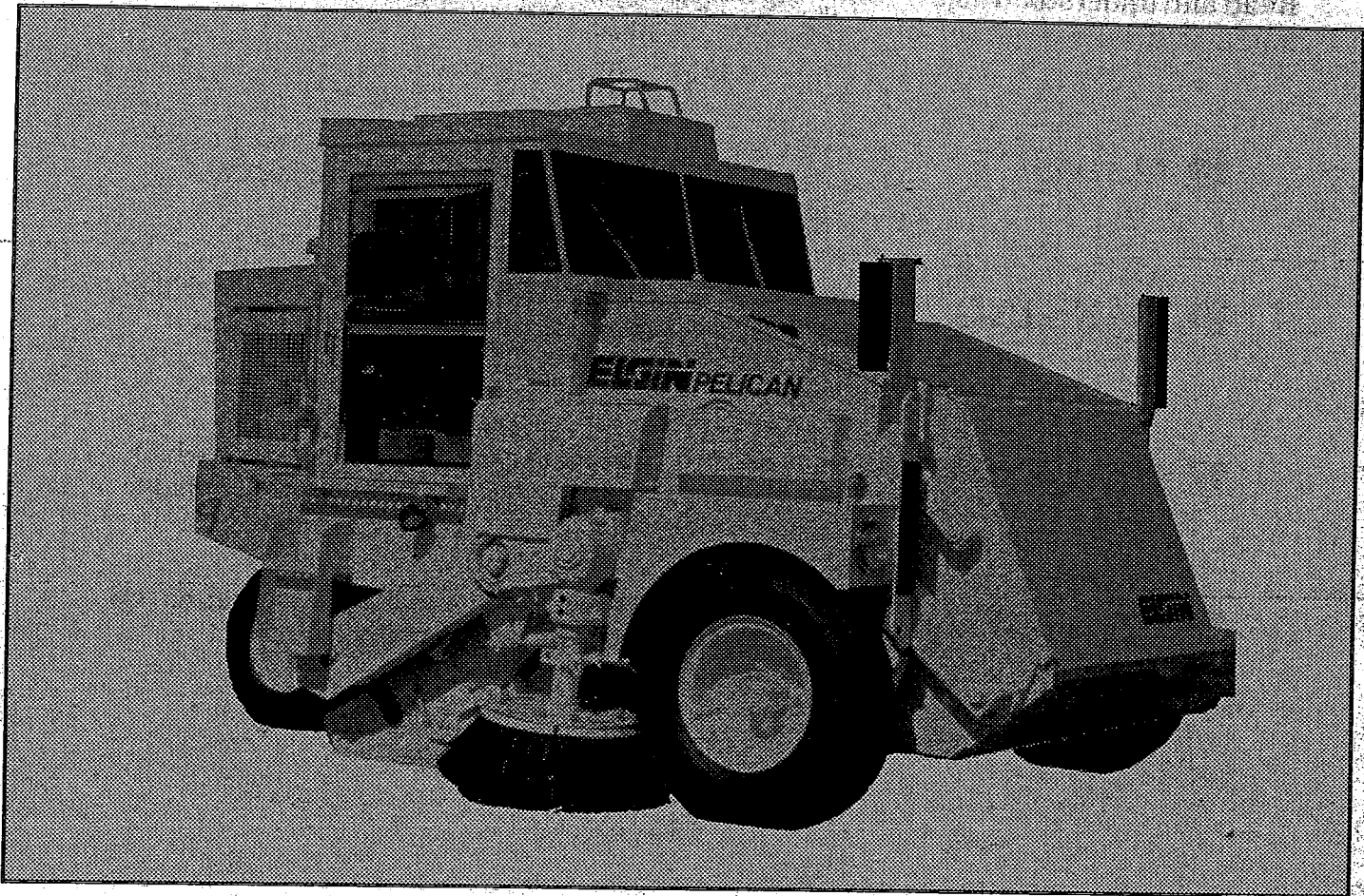
Operations Division
John A. Lindquist
3433 N Fratney Street
Milwaukee, WI 53212
963-0398

cc: Common Council ✓
Gregory Jagmin
Wayne King

1



Operator's Manual



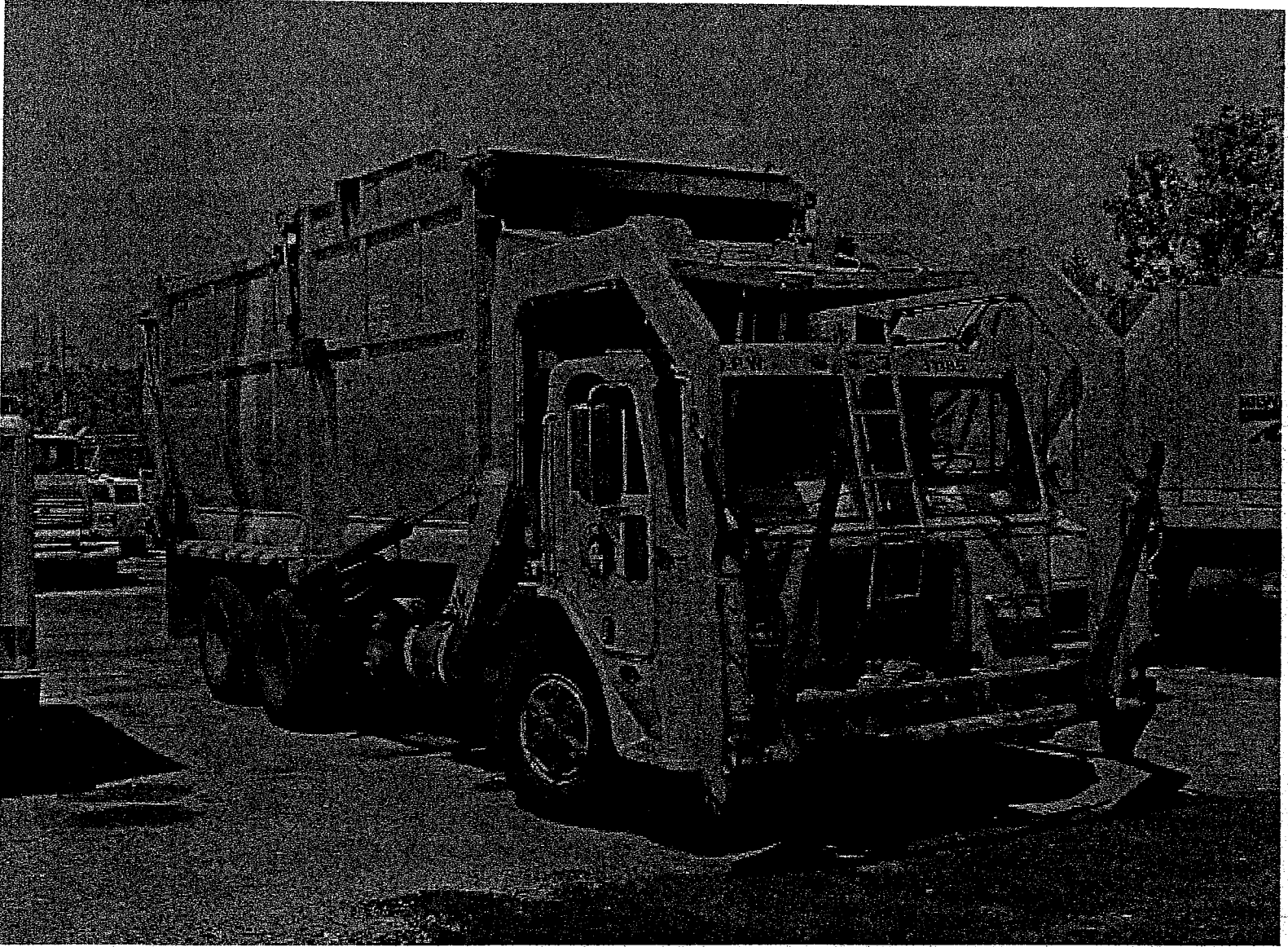
for
ELGIN PELICAN
Series SE

(847)

Elgin Sweeper Company
Subsidiary of Federal Signal Corporation
P.O. Box 537, Elgin, IL 60121-0537
Phone: (708) 741-5370
Cable: ELGSWP
Fax: (708) 742-3035

P/N 0700789-A

2





REACH ALL

**BRIDGE
INSPECTION
UNITS**

MODELS

UB40

UB50

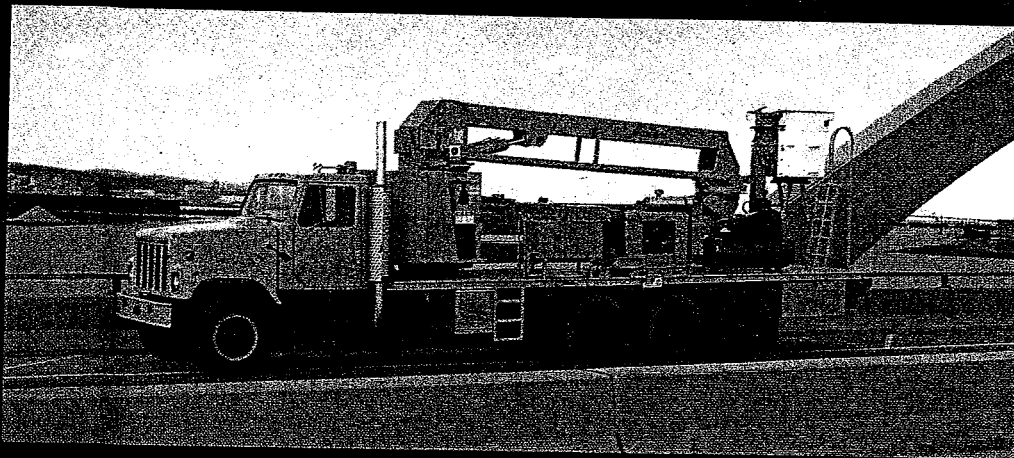
UB60

*The Total Bridge Inspection Unit
Designed with
Your Bridges in Mind*

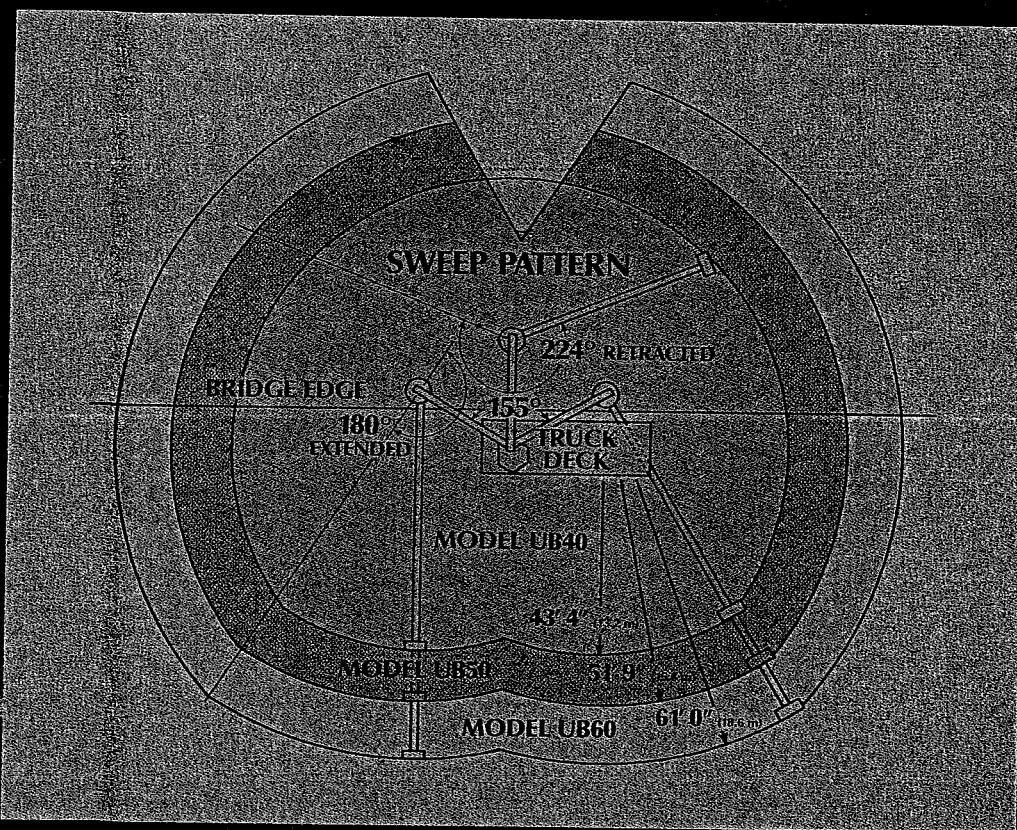




BRIDGE INSPECTION UNITS MODELS UB40/UB50/UB60



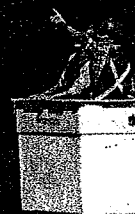
The Model UB50
in the traveling position.



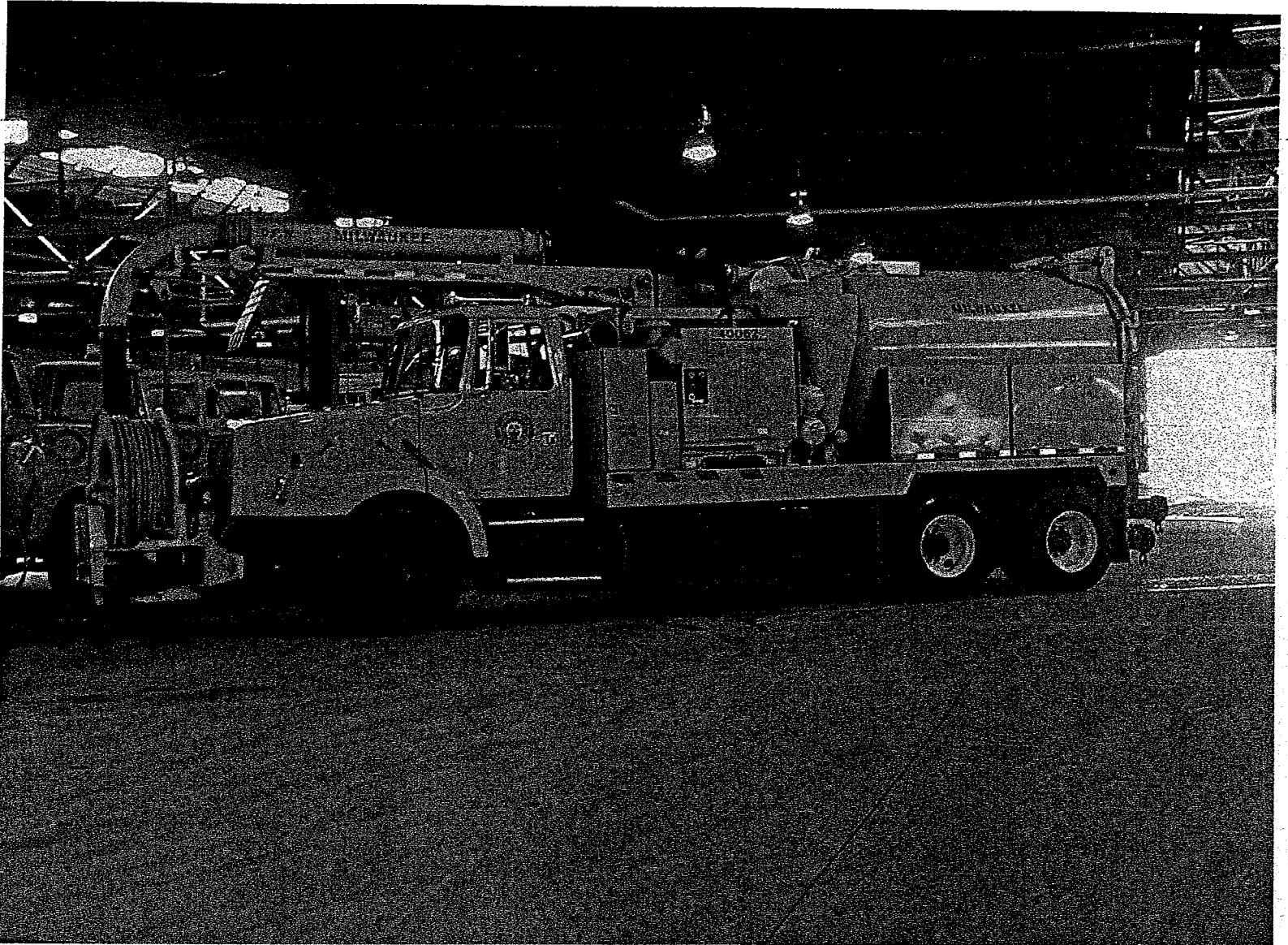
Exclusively Manufactured By



REACH ALL, Inc.
1300 Port Terminal Drive • P.O. Box 16047
Duluth, Minnesota 55816-0047
Phone 218/722-9200
Telex 29-4436 REACH ALL DUL



4



5



6





BANTAM T-588

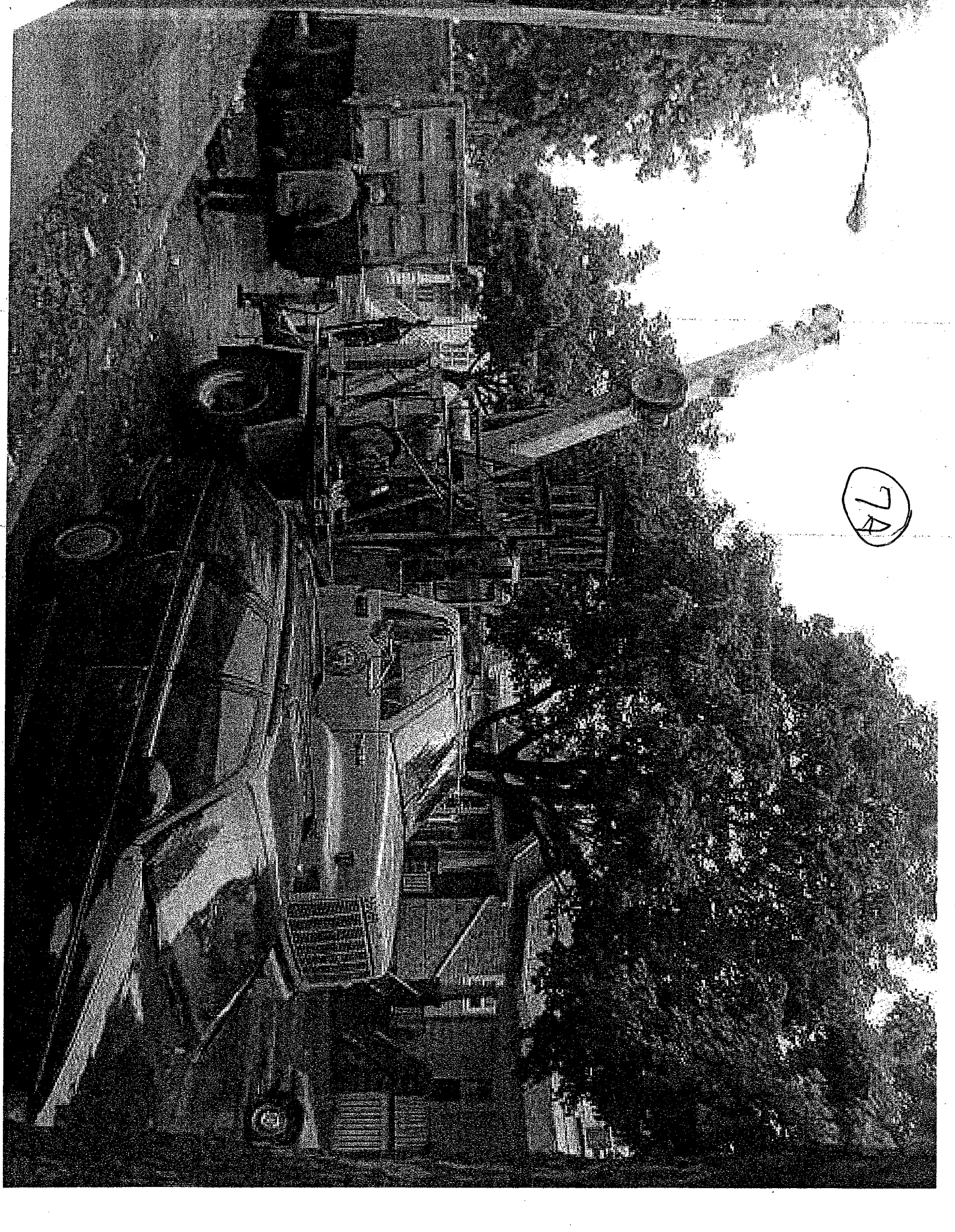
telekrane

7

**STRONG ON
PERFORMANCE**

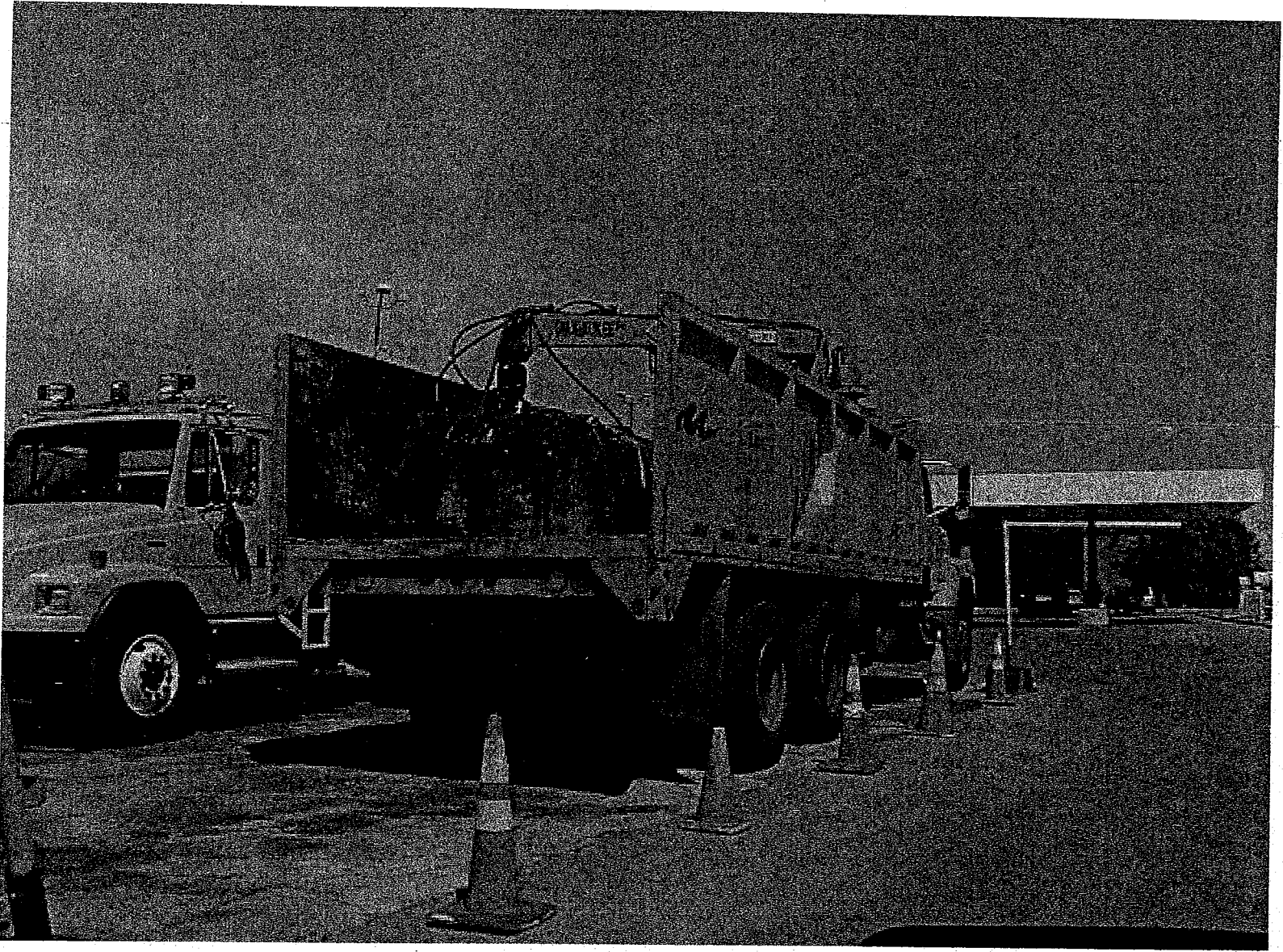


**18 TON CAPACITY
(16.3 METRIC TON CAPACITY)**



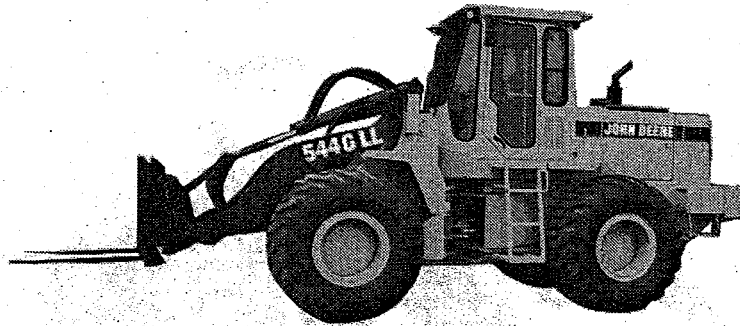
7A

8

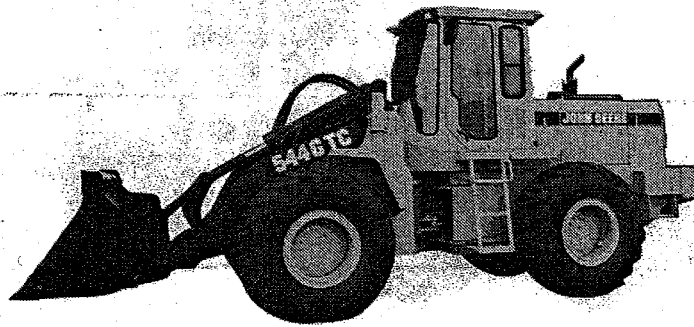


END LOADER

9



T7790Y -UN-06OCT92



T7790Z -UN-06OCT92

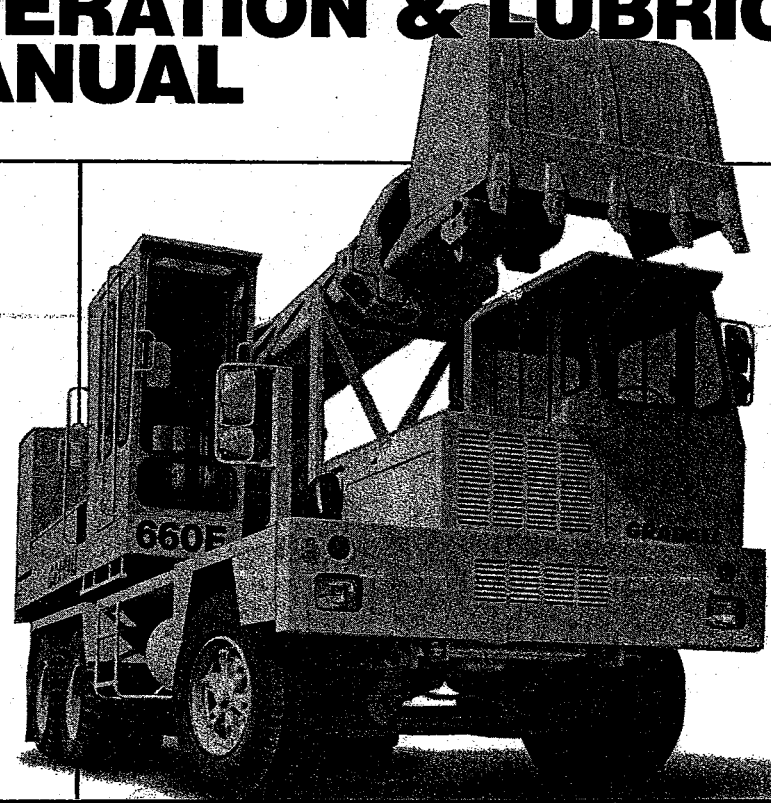
10

GRADALL[®]

HYDRAULIC EXCAVATORS

660E

6x4 & 6x6 CARRIER OPERATION & LUBRICATION MANUAL



IMPORTANT

Read and understand this manual, the 660E Upperstructure Operation Manual, the Gradall Safety Manual, the CIMA Safety Manuals, and all of the Gradall Service Manual Sections before starting, operating, or performing maintenance procedures on this machine.

KEEP THESE MANUALS IN CAB.

AVERTISSEMENT!
Si vous ne lisez pas l'anglais, demandez a votre surveillant de vous donner les instructions de securite!

ATENCION!
Si no lee ingles, preguntele a su supervisor para las instrucciones de seguridad!

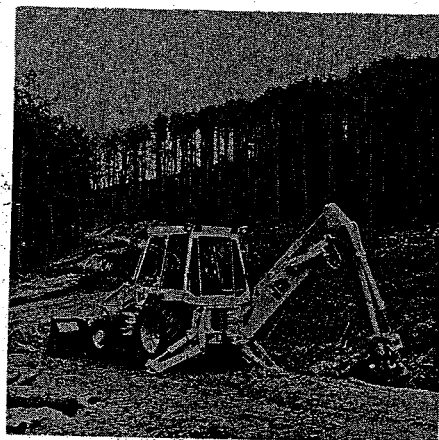
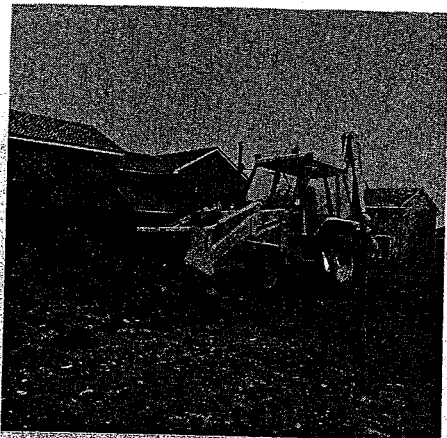
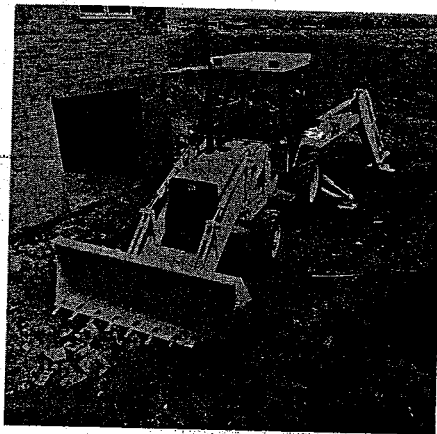
VORSICHT!
Wen Sie kein Englisch lesen, bitten Sie ihren Vorgesetzten um die Sicherheitsvorschriften!

52072, 52110

11



BACKHOE LOADER MANUAL



**1400B (Centermount) • 1400B (Sideshift)
SITEMASTER • 1550B • 1600B • 1700B**

12

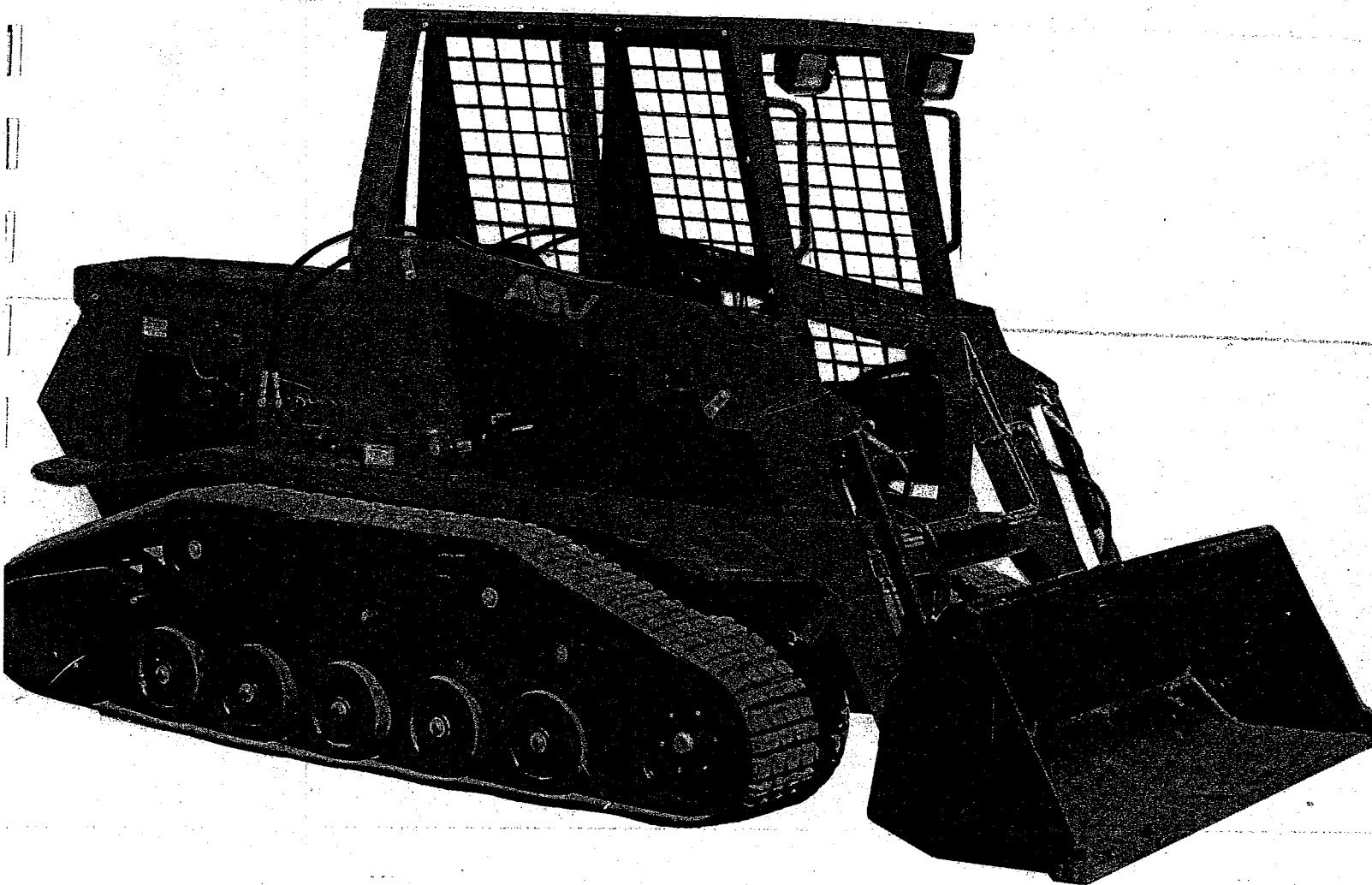


Eg# 52201

(B)

POSI-TRACK[®]

Model MD70 - Diesel



OPERATOR AND SERVICE MANUAL

TRACTOR LOADER SALES, INC.

1129 HWY. 164 (AT I-94)

P.O. BOX 1484

PART NUMBER 0400-819

WAUKESHA, WI 53187

PH. 542-9400

ASV

All Season Vehicles, Inc.

P.O. BOX 218 / MARCELL, MN 56657