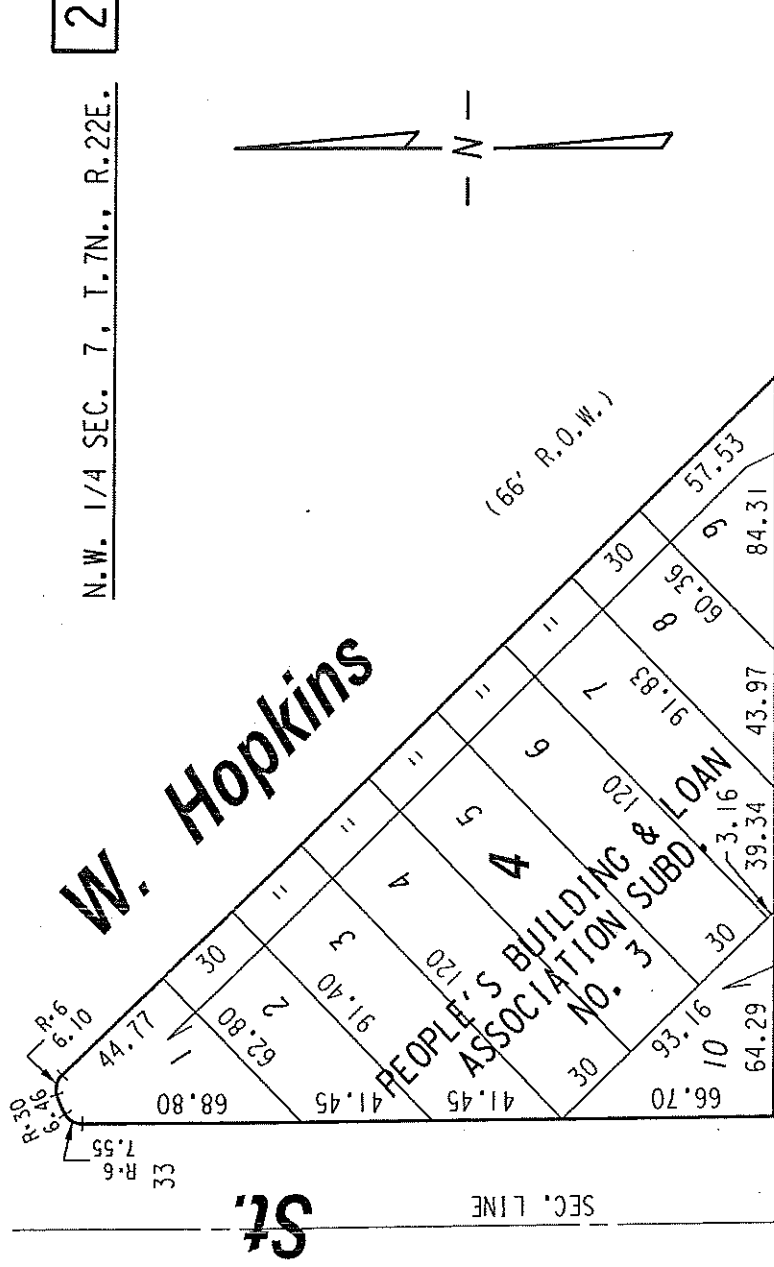


270

N.W. 1/4 SEC. 7, T.7N., R.22E.

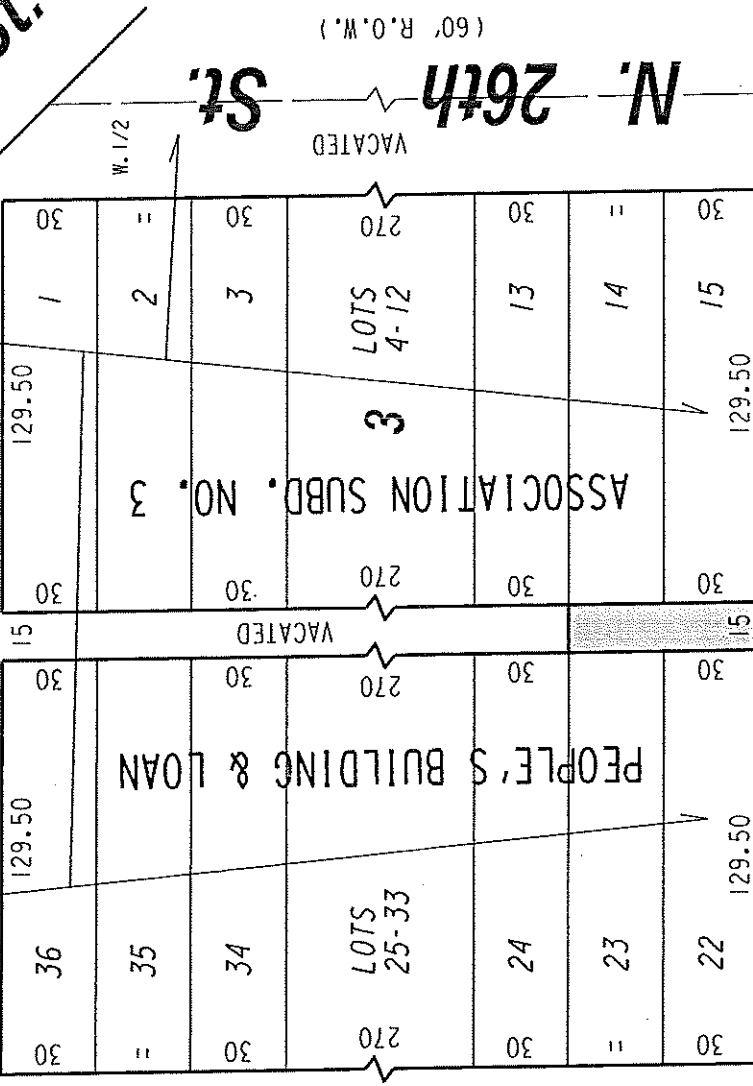


1/4 SEC. LINE

St.

W. Keefe Ave. (R.A.C.M.)

TAX KEY NO. 285-1724-111



VACATED (60' R.O.W.)

St.

N. 27th

W. Townsend St. (60' R.O.W.)

285

S.W. 1/4 SEC. 7, T.7N., R.22E.

PORTION OF PUBLIC ALLEY PROPOSED TO BE VACATED

EXHIBIT "A"  
 FILE NO. 141138  
 INFRASTRUCTURE SERVICES DIVISION  
 MILWAUKEE, WISCONSIN

ASSIGNED TO: W. FUCHS  
 CH'K'D. BY: W. FUCHS  
 DRAWN BY: W.F.  
 DATE: FEB. 13, 2015  
 PROJECT/GRANT NO.: WK52337362  
 SCALE: 1" = 60'

*[Signature]*  
 CITY ENGINEER

*[Signature]*  
 CENTRAL DRAFTING & RECORDS MANAGER