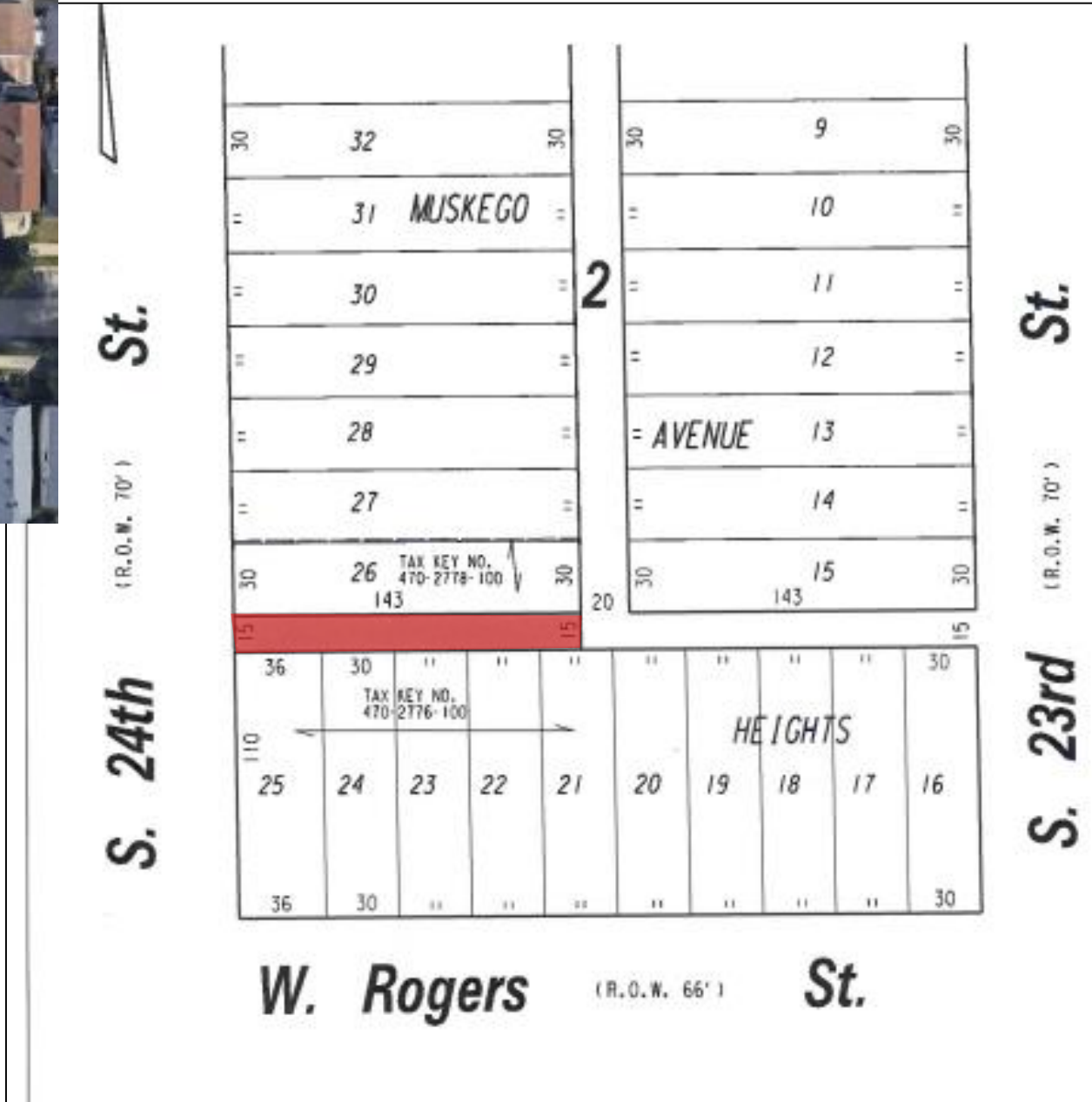
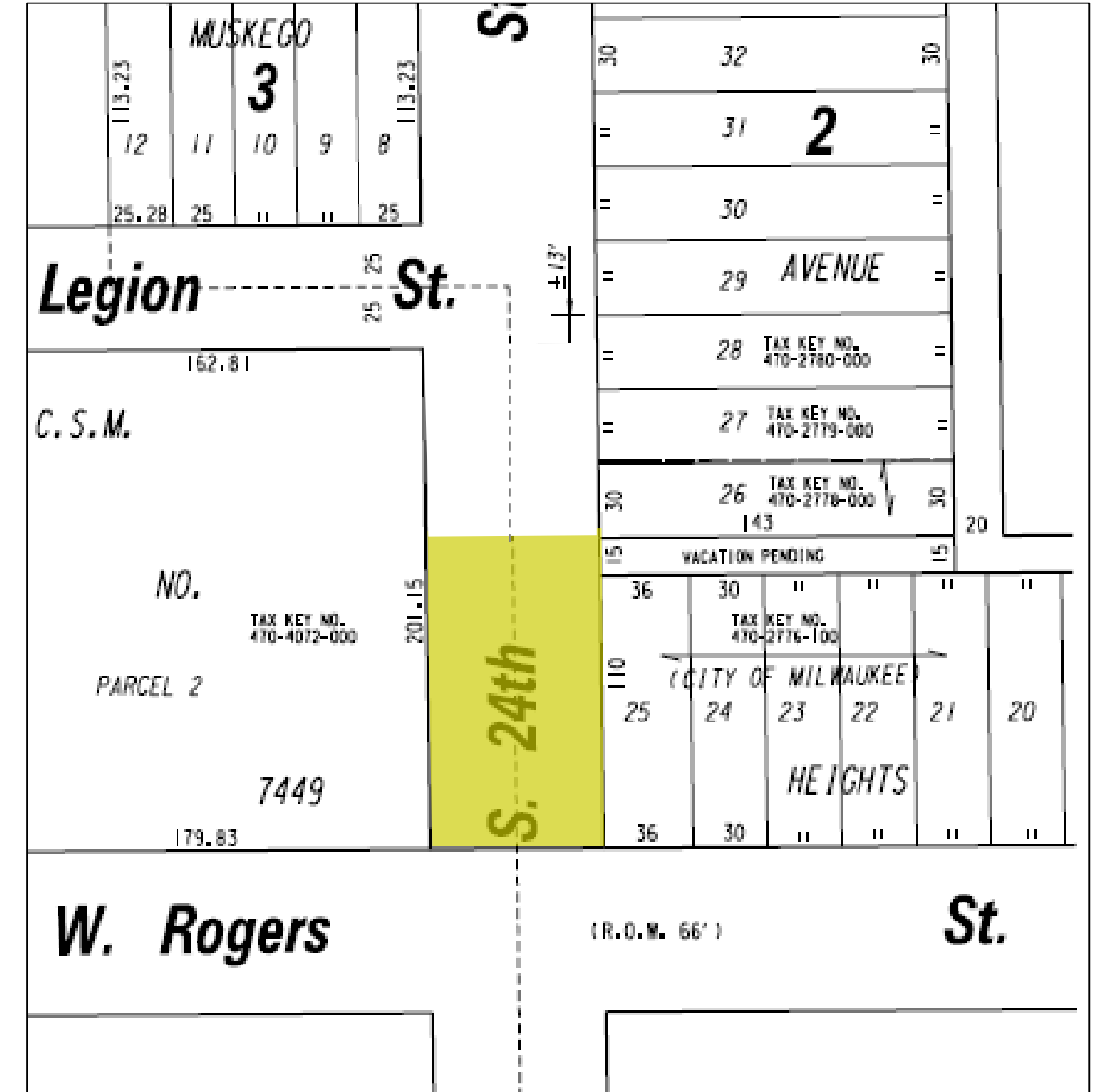


Item 13: File No. 230329
Alley Vacation



Item 14: File No. 231134
Pedestrian Mall



File Nos. 230329 and 231134. Context.



S. 24th St. – Looking north



S. 24th St. – Looking south



Alley proposed to be vacated – Looking east



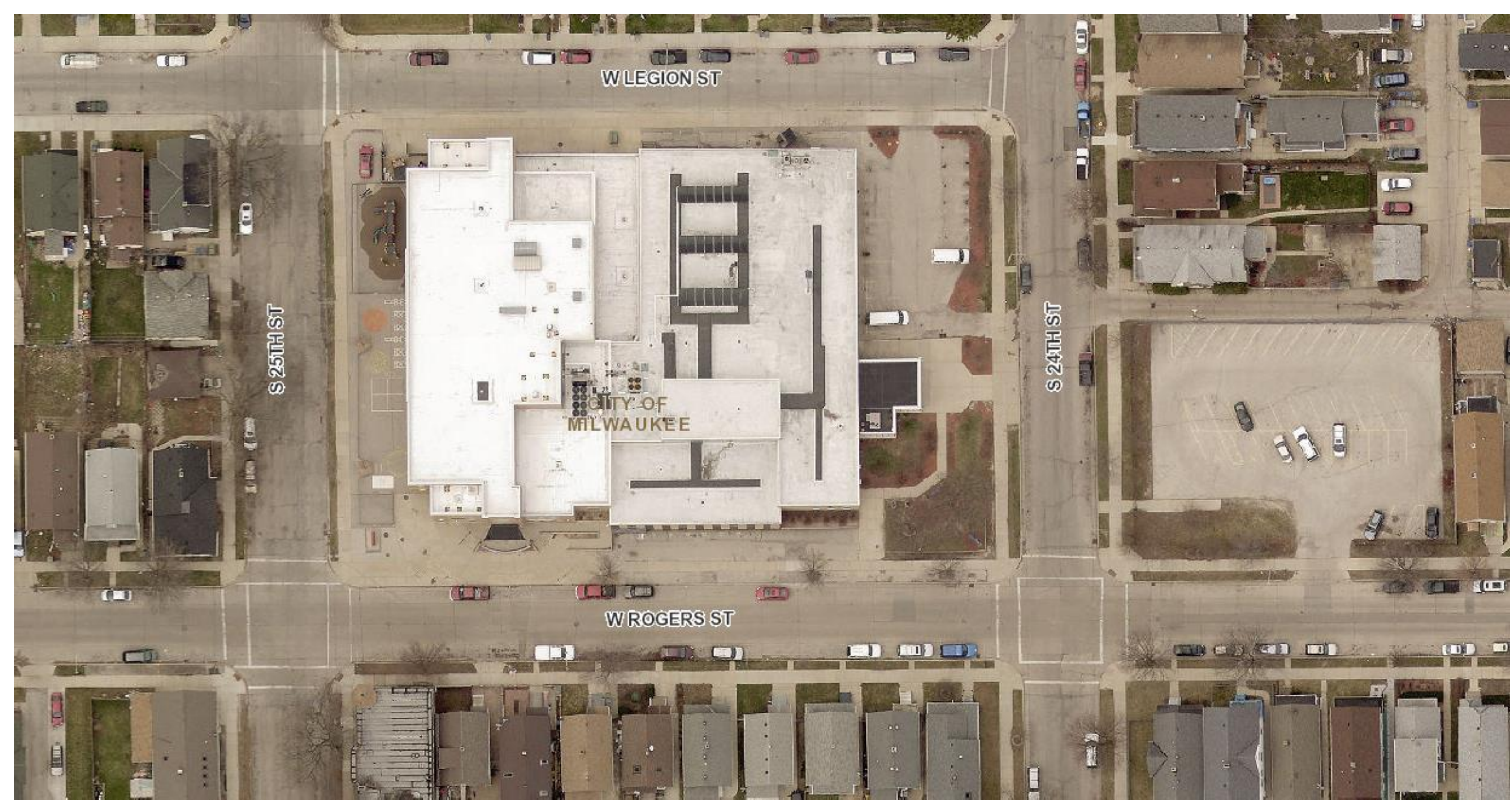
Alley proposed to be vacated – Aerial view looking northwest

REGION	POPULATION DENSITY (APPROX. PER SQ. MILE)	MEDIAN AGE	UNDER 18 YEARS OLD
WISCONSIN	100	40	21%
MILWAUKEE COUNTY	3,900	35	24%
CITY OF MILWAUKEE	6,000	31	26%
ZIP CODE 53204	13,000	28	32%



ROGERS STREET PLAZA





W LEGION ST

S 25TH ST

CITY OF
MILWAUKEE

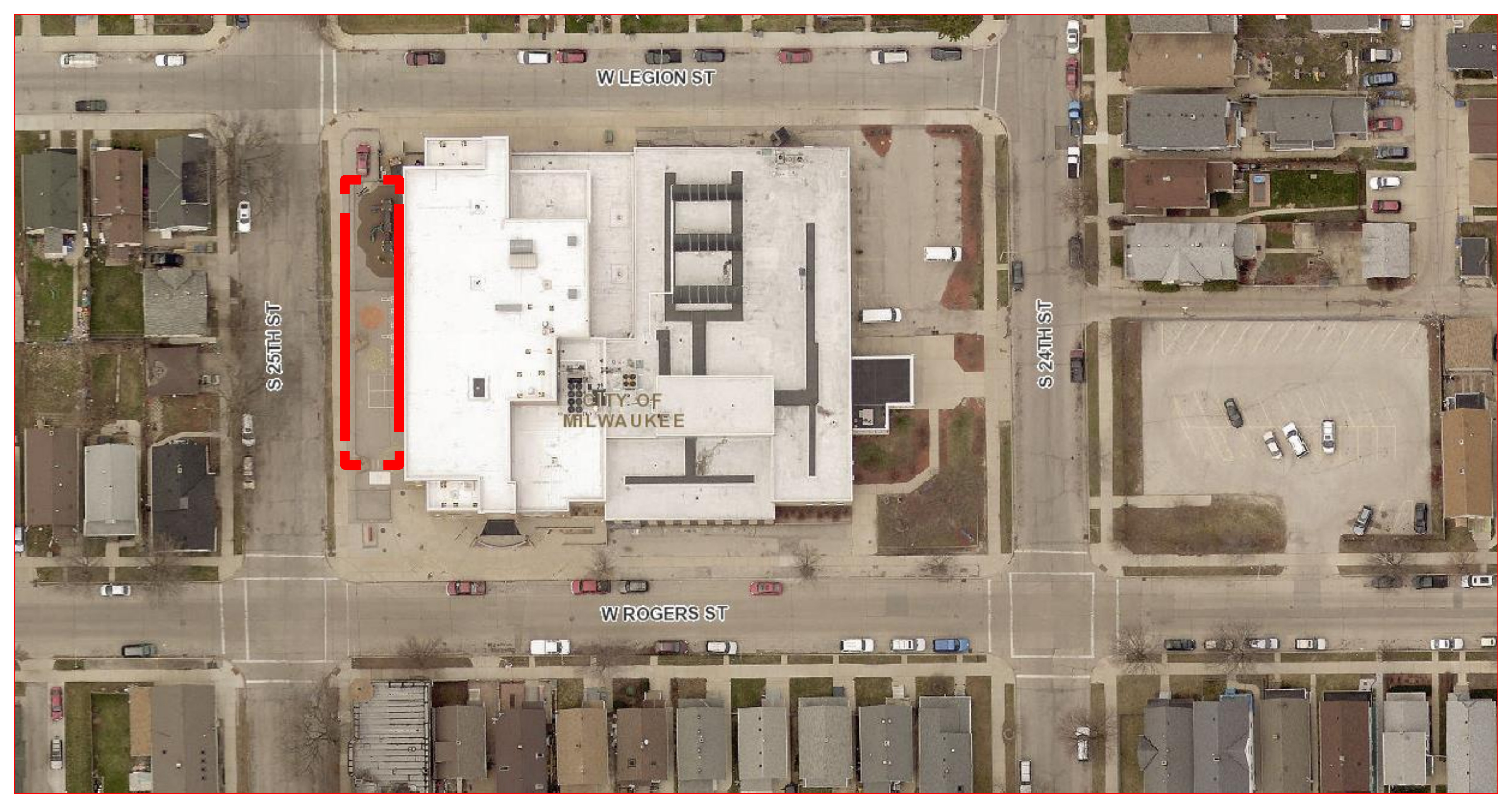
S 24TH ST

W ROGERS ST



ROGERS STREET PLAZA





W LEGION ST

S 25TH ST

CITY OF
MILWAUKEE

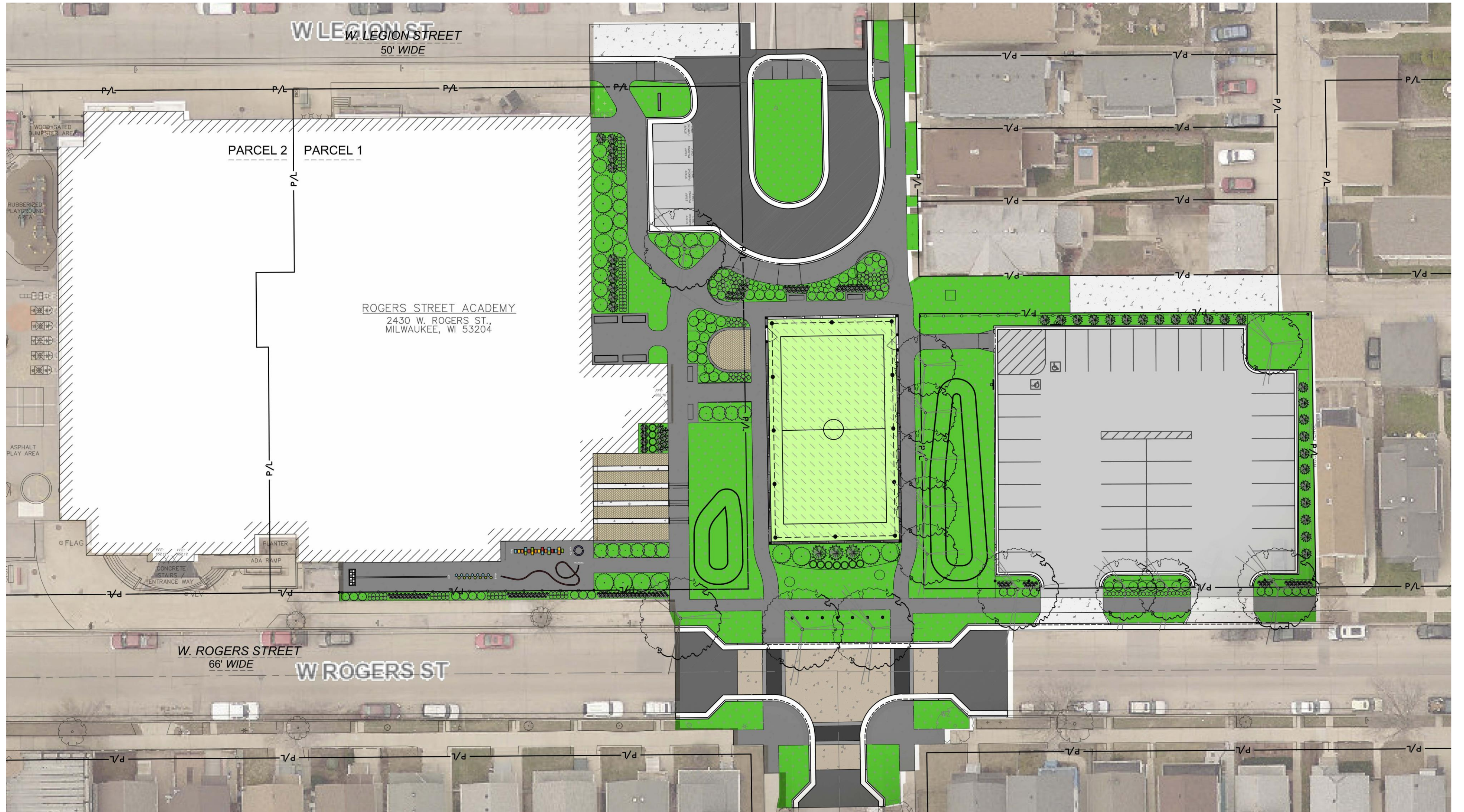
S 24TH ST

W ROGERS ST



ROGERS STREET PLAZA





ROGERS STREET ACADEMY
2430 W. ROGERS ST.,
MILWAUKEE, WI 53204

W. ROGERS STREET
66' WIDE

W ROGERS ST

W LEGION ST
50' WIDE

PARCEL 2 PARCEL 1



ROGERS STREET PLAZA



W. LEGION STREET

IDE

MUSICAL PLAY EQUIPMENT



P/L

P/L

CONTROLLED PICK-UP, DROP-OFF AND REDUCED TRAFFIC



7/d

7/d

7/d

7/d

7/d

7/d

BICYCLE RACKS

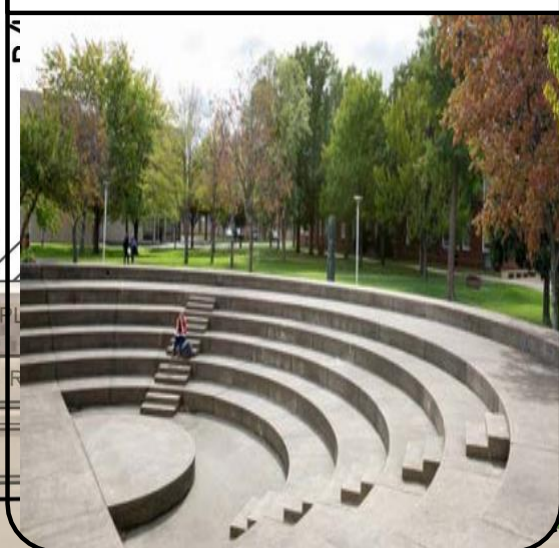


STREET ACADEMY
W. ROGERS ST.,
AUXEE, WI 53204

TURF PLAYFIELD WITH HIGH NETTING



OUTDOOR CLASSROOM

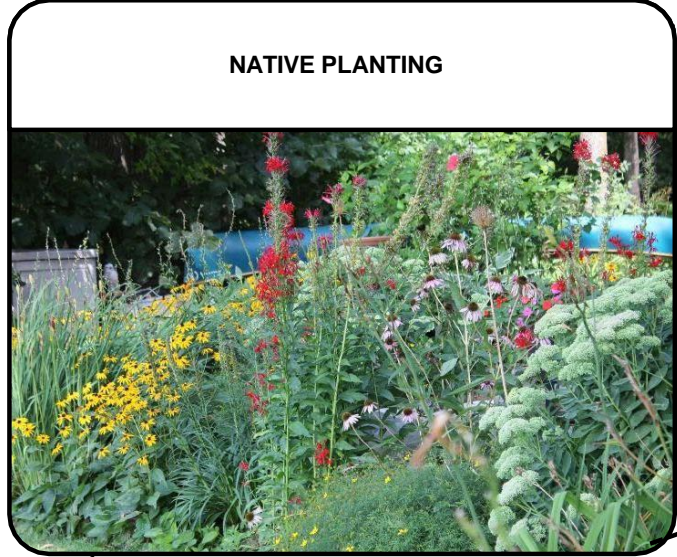


RAIN GARDENS

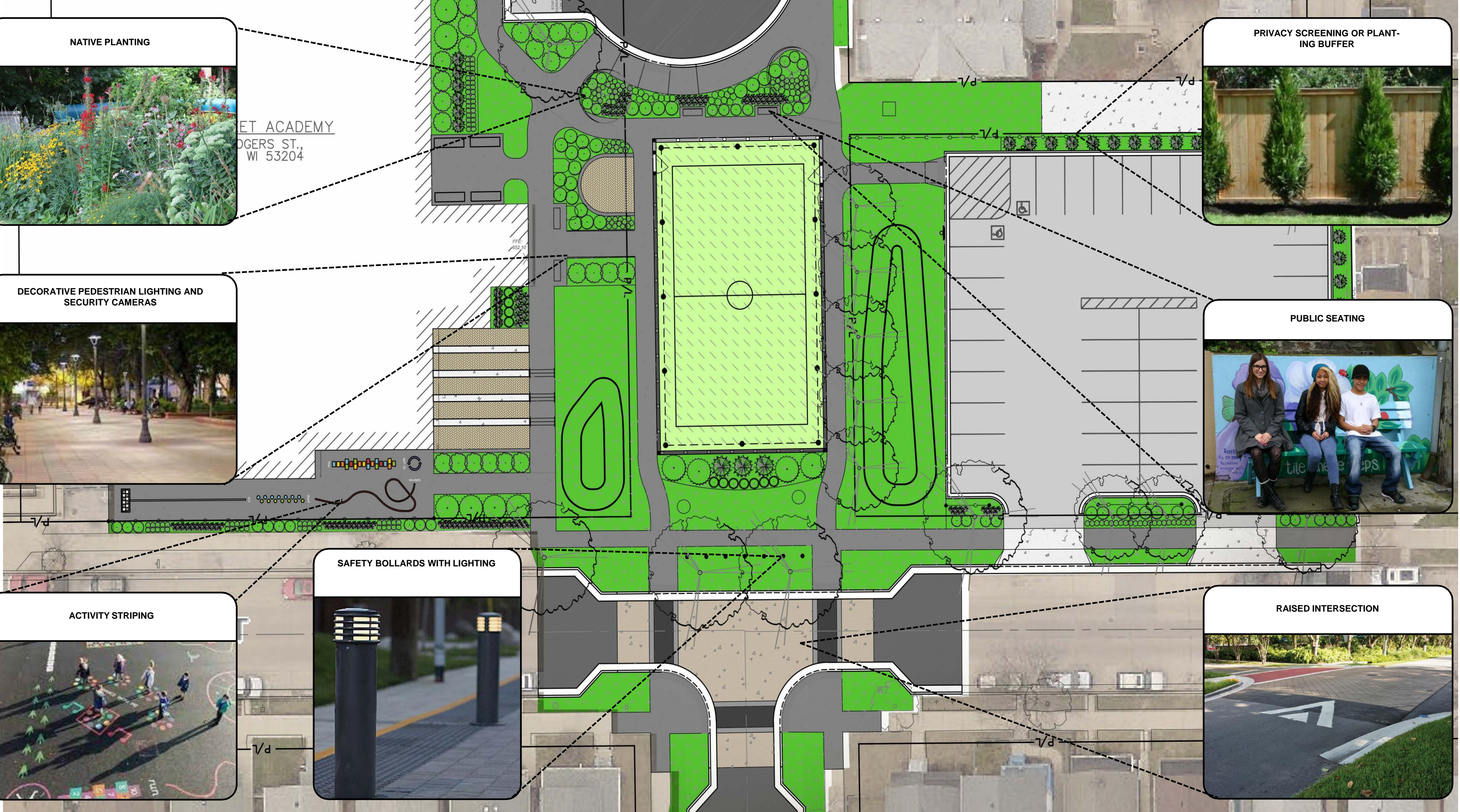
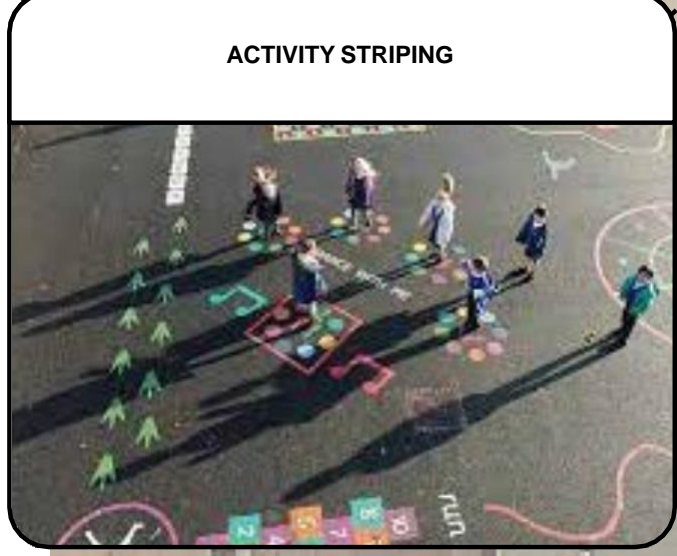
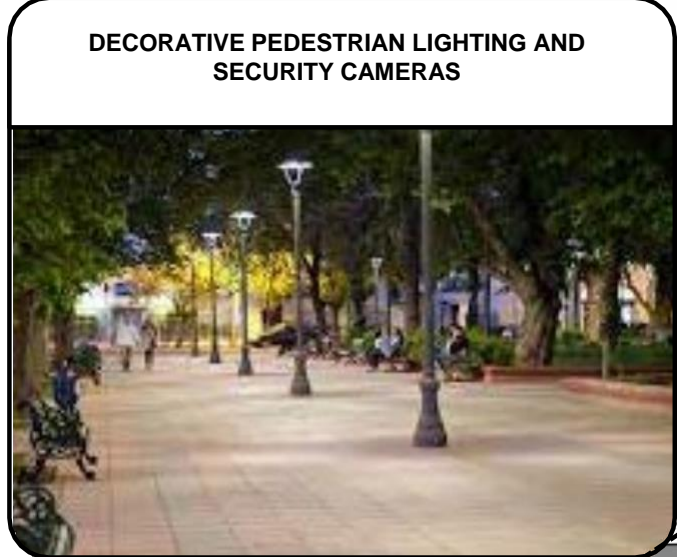


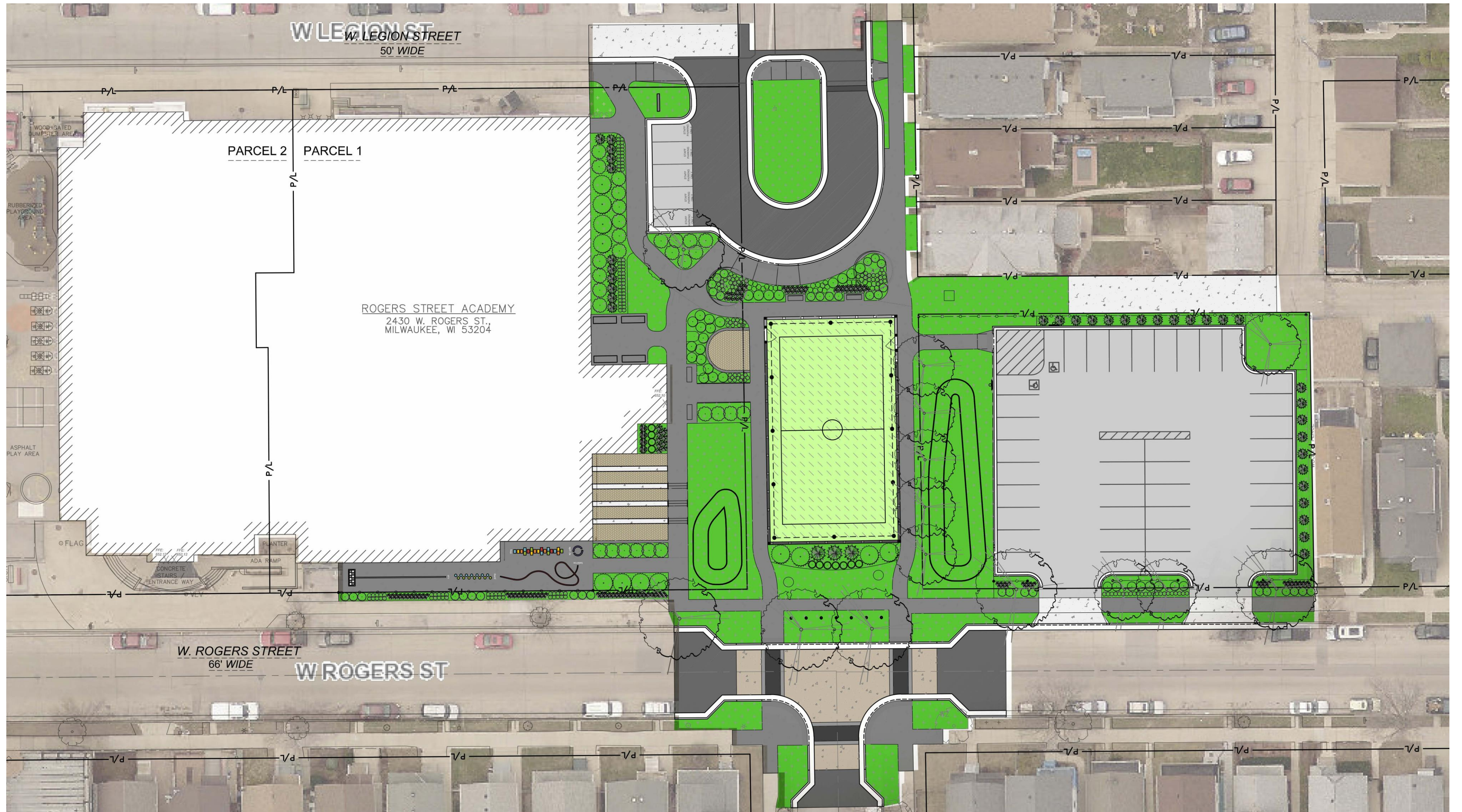
ROGERS STREET PLAZA





ROGERS ST.,
WI 53204





ROGERS STREET ACADEMY
2430 W. ROGERS ST.,
MILWAUKEE, WI 53204

W. ROGERS STREET
66' WIDE

W ROGERS ST

W LEGION ST
50' WIDE

PARCEL 2 PARCEL 1



ROGERS STREET PLAZA

